



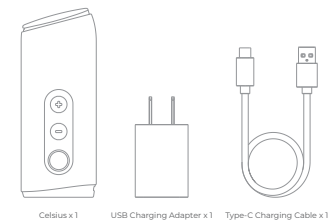
READ THIS MANUAL BEFORE USING  
THIS PRODUCT. FAILURE TO FOLLOW  
THE INSTRUCTIONS AND SAFETY PRECAUTIONS  
IN THIS MANUAL CAN RESULT IN SERIOUS  
INJURY OR DEATH.

AUXO SUGGESTS YOU DOWNLOAD AND SAVE  
THIS USER MANUAL AND WARRANTY  
POLICY FOR EASY FUTURE REFERENCE.

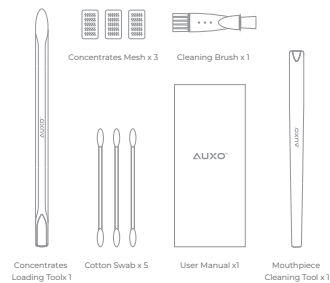
DIRECT-LUNG INHALE IS RECOMMENDED  
FOR BEST EXPERIENCE.



#### What's in the Box



Celsius x1 USB Charging Adapter x1 Type-C Charging Cable x1



Concentrates Loading Tool x1 Cotton Swab x5 User Manual x1 Mouthpiece Cleaning Tool x1

#### Quick Start

Fully charge the device before first use.

Rotate the mouthpiece 180°, and lift the magnetic mouthpiece from the base of the Celsius, to expose the heating oven.



#### Packing loose leaf:

1. Use coarsely ground material. The grind should be small and crumbled but not too fine. A powdery grind will cause pull-through.
2. Loosely fill the heating oven slightly past the rim and tamp down gently.
3. Ensure the oven rim and other surfaces are completely free of debris for a tight seal.

#### Packing concentrates:

Use concentrates loading tool to place the proper amount of concentrates in the heating oven.

Step 1: Place the concentrates mesh on top of the heating oven, and press firmly into the bottom of the heating oven.

Step 2: Place small amount of material on the center of the mesh. A little goes a long way!

For best performance, we recommend using only 10 - 20 milligrams of material (about the size of a lentil) and setting the device to the Med-High or High temperature settings. In general, you may find that your vapor is slightly richer when using concentrates than when using loose leaf.

**IMPORTANT:** Do not overfill concentrates mesh.

Put the magnetic mouthpiece back on the Celsius base. Make sure it is seated correctly.

#### Turn on the device

Press the power button "⏻" at the bottom for over 3 seconds.

When the device is on, the LED ring light illuminates and the Celsius vibrates briefly. Press the "H" buttons to choose between heat settings. The device will vibrate and enter heating mode. The LED ring light varies as the heat settings change. When the temperature is set to level 5, the ring light reaches a full circle.

Press the "+" button for 3 seconds to start heating. The device vibrates when heating begins, and the LED ring light blinks while heating.

In the preheating phase, the LED ring light blinks blue cyclically for 3-6 seconds. When the preheating phase ends, the device vibrates briefly, and the LED ring light turns to steady green. Celsius then enters a 40 second heating phase.

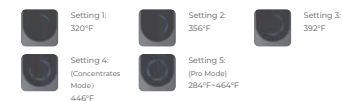
After heating, the device vibrates for 1 second, and the LED ring light will reflect the current heating mode.

Press the button for three 3 seconds again to turn Celsius off. Celsius is turned off after it vibrates and the LED ring light fades out.

The device will turn off automatically, if no activity is detected for 5 minutes or longer.

With a device over-heating protection function, the battery will automatically cut off and stop working if the surface temperature of the device is over 464°F/1°C.

#### 5 Temperature Level



#### Pro Mode

In Pro Mode, you can create a 40 second heating curve with up to 9 temperature variations. To select and start in Pro Mode, you will have to use the AUXO Celsius App as discussed below.

#### Charging & Battery Level

When the battery runs out of power, the LED ring light will blink 10 times in red, and short vibrations will occur shortly. The device will then turn off automatically. To charge the device, connect one end of the Type-C charging cable to your device and the other end to a charging adapter.

To check the current battery level of your device, gently shake the Celsius twice. The LED ring light will indicate the battery level.



#### Celsius App

##### Download the AUXO Celsius app:

1. For iOS users, search "AUXO Celsius" in the App Store or go to website: [www.auxo-official.com/pages/app-download](http://www.auxo-official.com/pages/app-download) to download.



2. For Android users, go to website: [www.auxo-official.com/pages/app-download](http://www.auxo-official.com/pages/app-download) to download.

WARRANTY CARD

Product Code:\_\_\_\_\_

Date of Purchase \_\_\_\_\_

(Based on the date from purchase receipt):

Month:\_\_\_\_\_Day:\_\_\_\_\_Year:\_\_\_\_\_

Store Information:

Store Name:\_\_\_\_\_

Phone:\_\_\_\_\_

Store Address:\_\_\_\_\_

City:\_\_\_\_\_Country:\_\_\_\_\_Post Code:\_\_\_\_\_

Customer Information:

Customer Address:\_\_\_\_\_

City:\_\_\_\_\_Country:\_\_\_\_\_Post Code:\_\_\_\_\_

AUXO reserves the right of final decision in all warranty cases.

AUXO may interpret and revise the content of this warranty card.

Please take good care of your warranty card. If lost, the warranty will be void.

For more information please visit  
[www.auxo-official.com](http://www.auxo-official.com)  
or email us via  
[support@auxo-official.com](mailto:support@auxo-official.com)

21+ THIS DEVICE SHOULD NOT BE USED BY PERSONS UNDER 21 OR WHERE CANNABIS IS ILLEGAL.

4. Damage caused by operating the device or charging adapter outside the permitted or intended use as described by AUXO in the user manual.
5. Damage caused by unauthorized heating of heating oven filters, user-filled heating oven tampering with the heating oven, or the use of a counterfeit heating oven.
6. Damage caused by modifications to the device to alter functionality or capability.
7. Cosmetic damage occurring through wear and tear, including but not limited to scratches, dents and broken plastic on ports.
8. Any device or charging case where the serial number has been tampered with, erased or obscured, or is not genuine.
9. Normal performance degradation of batteries (please contact AUXO Customer Support for more information on battery degradation).
10. Any other attachments and accessories which can be purchased separately.

How to get warranty service?

Please retain your purchase receipt or other proof of purchase for your records. If no purchase receipt or other proof of purchase is provided, the warranty start/end dates will be determined according to the device serial number.

Please contact the AUXO Customer Support Team first by submitting a support request to [support@auxo-official.com](mailto:support@auxo-official.com) to initiate warranty service. We encourage you to include as many details as you can in the request, such as pictures and videos of the issue to help the team resolve it.

An RMA (Returned Material Authorization) number and shipping instructions will be sent to you if the issue cannot be resolved. You will need to send the product along with the RMA number back to us by following the shipping instructions.

Note:

1. You must return your approved-for-warranty AUXO Device or Portable Charging Case to AUXO before AUXO sends you a replacement on your warranty claim.
2. Customers are responsible for all shipping costs associated with the warranty process.
3. AUXO is not responsible for lost or damaged returns sent by the customer.

Return & Refund Policy

Refunds are only available for new and unused devices purchased on <https://www.auxo-official.com> and must be returned directly to AUXO within 14 days of receipt. If the tamper-proof seal is broken, a refund cannot be honored. AUXO will not refund devices purchased through other authorized retailers; in such case, any refunds must be obtained from the authorized retailer from whom you purchased the device and will be subject to the retailer's policy on refunds.

Note: The customer is responsible for the return shipping fee.

Additional Limited Warranty Terms and Conditions

THERE ARE NO WARRANTIES WHICH EXTEND BEYOND THE DESCRIPTION ON THIS CARD. AUXO DISCLAIMS AND EXCLUDES ANY IMPLIED WARRANTIES, INCLUDING BUT NOT LIMITED TO MERCHANTABILITY, AFTER THE EXPIRATION OF 10 YEARS AFTER PURCHASE BY THE END USER. Some states do not allow limitations on how long an implied warranty lasts, so the above limitation may not apply to you.

In no event will AUXO be liable for any special or consequential damages arising from the use of this product, nor for injury to any person, or any claim for damages arising from the use of this product. Some states do not allow the exclusion or limitation of incidental or consequential damages, so the above limitation may not apply to you.

FCC/CE/RoHS

- This device complies with part 15 of the FCC Rules. Operation is subject to the following two conditions: (1) This device may not cause harmful interference, and (2) this device must accept any interference received, including interference that may cause undesired operation.  
Any Changes or modifications not expressly approved by the party responsible for compliance could void the user's authority to operate the equipment. This equipment has been tested and found to comply with the limits for a Class B digital device, pursuant to part 15 of the FCC Rules. These limits are designed to provide reasonable protection against harmful interference in a residential installation. This equipment generates uses and can radiate radio frequency energy and, if not installed and used in accordance with the instructions, may cause harmful interference to radio communications. However, there is no guarantee that interference will not occur in a particular installation. If this equipment does cause harmful interference to radio or television reception, which can be determined by turning the equipment off and on, the user is encouraged to try to correct the interference by one or more of the following measures:

1. Reorient or relocate the receiving antenna.
2. Increase the separation between the equipment and receiver.
3. Connect the equipment into an outlet on a circuit different from that to which the receiver is connected.
4. Consult the dealer or an experienced radio/TV technician for help.

**This equipment complies with FCC radiation exposure limits set forth for an uncontrolled environment. This transmitter must not be co-located or operating in conjunction with any other antenna or transmitter.**

- AUXO Celsius is in compliance with RoHS and the council EMC 2014/30/EU.
- Environmentally friendly disposal: You can help protect the environment! Please remember to respect local regulations, and hand in any electrical equipment you wish to dispose of at an appropriate waste disposal center.

Warranty

How long does the limited warranty last?

AUXO offers a 10-year limited warranty on the device, and a 2-year limited warranty on the charging adapter and USB charging cable from the date of purchase. The way loading tool, wax mesh, cotton swab, cleaning brush and mouthpiece cleaning tool are not covered under the limited warranty.

What does the limited warranty cover?

AUXO provides a limited warranty on authentic products purchased from the AUXO official website and authorized offline stores against defects in material and/or workmanship under normal use. The limited warranty only extends to the original purchaser of the product and is nontransferable. The limited warranty does not apply to products that were sold by any third-party reseller.

In no case may recovery under this warranty exceed the cost paid for the product.

What is not covered under warranty?

This warranty does not apply to certain situations and conditions, including but not limited to:

1. Any AUXO product sold by non AUXO official website or unauthorized offline store.
2. Damage caused by accident, abuse, misuse, flood, fire, earthquake or other external causes.
3. Damage caused by the device being exposed to or coming in contact with moisture (e.g. liquids, water, rain, extreme humidity, unusually heavy perspiration or other moisture), or extreme thermal or environmental conditions (e.g., sand, food, dirt or similar substances).

Cleaning & Maintenance

Cleaning is highly recommended after each use.

To clean the heating oven:

1. Let the oven cool down to room temperature. Pull up the mouthpiece to expose the oven.

⚠ Don't handle if hot.

2. Use the cleaning brush to clean the residue out of the oven completely.
3. Dip the cotton swab in 90% isopropyl alcohol and wipe the oven clean.

⚠ Isopropyl alcohol is highly flammable. Let it dry completely before heating device.

To clean the mouthpiece:

1. Remove the mouthpiece from the battery by pulling up the mouthpiece.
2. Disassemble the mouthpiece into 5 separate parts and submerge them in 90% isopropyl alcohol.

⚠ Isopropyl alcohol is highly flammable. Let it dry completely before heating device.

3. Wipe the mouthpiece parts clean with dry cotton swabs.
4. Let the mouthpiece dry completely and re-assemble it before use.

- Please note: cleaning and maintenance must NOT be performed before the device is turned off and cools down to room temperature. Never place the Celsius base in liquid.

Storage

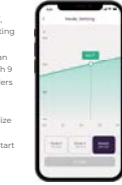
- Do not expose the device to direct sunlight, dust, moisture, or mechanical shock.
- The device may no longer work properly if dropped.
- Do not place heavy loads on the device or drop it.

Safety

- Do not attempt to disassemble or repair the device by yourself as damage or personal injury may occur.
- Keep body parts, clothing, etc. away from the heat source to prevent scalding or damage to personal property.
- To prevent scalding, do not touch the heating oven before it has completely cooled down.
- Please use only the power adapter provided with this device to charge it.
- Please do not use the device while it is charging.
- Make sure your hands are dry before touching the charging device to prevent electric shock.
- The device is not recommended for use outdoors while it is raining, or in other circumstances where it may get wet.
- This device is not recommended for pregnant or breastfeeding women.
- If any abnormal activity by the device is observed, please stop using it immediately and contact a professional after-sales service technician.

Pro Mode:

1. On the Home page, tap on "Settings", then "Mode Settings", to select a heating mode.
2. In the customizable Pro Mode, you can create a 40 second heating curve with 9 temperature variations. Move the sliders up and down to set your preferred temperature.
3. Click "Confirm" at the bottom to finalize your preferred temperature setting.
4. Return to the Home page, and tap "Start heating" to start the session.



Battery Level:

1. Check on the upper right corner for current battery level.
2. Tap "Settings" at the bottom to open the setting menu.

- We recommend charging your device when the battery level is below 20%.



Unit of Temperature:

1. On the Home page, tap to open "Settings".
2. In the "Units of Temperature", you can choose your preferred scale, Fahrenheit(F) or Celsius(C).



Vibration Intensity:

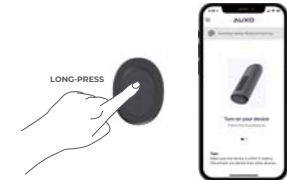
1. On the Home page, tap to open "Settings".
2. To turn on/off the vibration notification and change levels of vibration intensity, tap "Adjust Vibration Intensity".

Customize without the app:

The AUXO Celsius App is not necessary to operate the device itself. The temperature can also be controlled directly without the App on Celsius devices, with a pre-set temperatures ranging from 320 to 446°F. Battery charge level is also available on the device itself.

Connect your device to the app:

1. To turn on the device, press the button at the bottom of the device for at least 3 seconds.



2. Turn on Bluetooth on your phone and place your device near your phone.
3. Once your device has been found, tap on the device name to complete the connection.
4. While connecting, the LED ring light blinks in blue for 2 seconds.
5. Once successfully connected, Celsius goes into standby mode and the LED ring light stays in blue.
6. If the connection is unsuccessful, the LED ring light will blink slowly. To exit and try connecting again, long-press the "+" and "-" button.

4 Heating Modes:

1. On the Home page, tap on "Settings", then "Mode Settings", to select the heating mode.
2. Modes 1-4 are pre-set heating modes. Select a heating mode and tap "Confirm" at the bottom.
3. Return to the Home page and tap "Start heating" to start the session.

