



DigitalBasics S2

High-Performance Home Theater Sound Bar with Built-in Woofer

User's Manual



German Engineering. Out of the ordinary

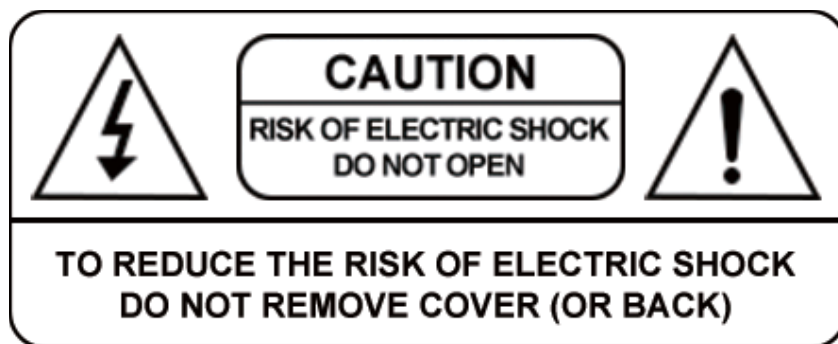
CONTENTS

IMPORTANT SAFETY INSTRUCTION	03
WARNING	03
NOTICE	04
PREPARATION FOR USE	07
PROTECT YOUR FURNITURE	07
POWER SOURCE	08
IMPORTANT NOTES	08
QUICK START GUIDE	09
WHAT'S IN THE BOX	09
REMOTE CONTROL	10
SOUND BAR SIDE CONTROL PANEL	11
SOUND BAR BACK PANEL	11
SETUP	12
OPERATE INSTRUCTIONS	16
ADVANCED SETUP	22
SPECIFICATIONS	23
TROUBLE SHOOTING	24
ONE YEAR WARRANTY	25

IMPORTANT SAFETY INSTRUCTION

Thank you for Chaowei DigitalBasics S2 High-Performance Home Theater Sound Bar system. Please read this user manual carefully and keep for future reference.

WARNING



Caution:

To reduce the risk of electric shock, do not dismantle the product and do not expose the apparatus to rain or moisture. No user-serviceable parts inside.

Refer servicing to qualified personnel only



The lightning flash within an equilateral triangle is intended to alert you to the presence of uninsulated dangerous voltage within the product's enclosure that may be of sufficient magnitude to constitute an electric shock to a person or persons. Refer servicing to qualified personnel only.



Important! This symbol alerts you to read and observe important warnings and instructions on the unit or in this manual.

NOTICE:

This appliance is not intended for use by persons (including children) with reduced physical sensory or mental capabilities, or lack of experience and knowledge, unless they have been given supervision or instruction concerning use of the appliance by a person responsible for their safety.

Children should be supervised to ensure that they do not play with the appliance.

1. To prevent possible hearing damage, do not listen at high volume levels for long time periods or a sudden high volume level.
2. Never use the device unsupervised! Switch off the device whenever you are not using it, even if not using it only for a short while.
3. The appliance is not intended to be operated by means of an external timer or separate remote control system.
4. If the supply cord is damaged, it must be replaced by the manufacturer, its service agent or similarly qualified persons in order to avoid a hazard.
5. Before operating this system, check the voltage of this system to see if it is identical to the voltage of your local power supply.
6. The unit should not be impeded by covering the ventilation opening with items such as newspaper, table-cloths, curtains etc. Make sure that there are at least 20 cm of space above and at least 5 cm of space on each side of the unit.
7. The apparatus must not be exposed to dripping or splashing and that objects filled with liquids, such as vases, must not be placed on the apparatus.
8. To prevent fire or shock hazard, do not expose this equipment to direct heat, rain, moisture or dust.

NOTICE:

- 9. Do not locate this unit near any water sources e.g. taps, bathtubs, washing machines or swimming pools. Ensure that you place the unit on a dry, stable surface.
- 10. Do not place this unit close to a strong magnetic field.
- 11. Do not place the unit on a amplifier or receiver.
- 12. Do not place this unit in a damp area as the moisture will affect the life of electric components.
- 13. Do not attempt to clean the unit with chemical solvents as this might damage the finish. Wipe with a clean, dry or slightly damp cloth.
- 14. When removing the power plug from the wall outlet, always pull directly on the plug, never pull on the cord.
- 15. Depending on the electromagnetic waves used by a television broadcast, if a TV is turned on near this unit while it is also on, lines might appear on the LED TV. Neither this unit nor the TV is malfunctioning. If you see such lines, keep this unit well away from the TV set.
- 16. The mains plug is used to disconnect the device, the disconnected device should remain readily operable.

IMPORTANT SAFETY INSTRUCTION

1. Read these instructions. Keep these instructions. Follow all instructions. Heed all warnings.
2. Do not use this apparatus near water.
3. Clean only with dry cloth.
4. Do not block any ventilation openings. Install in accordance with the manufacturer's instructions.
5. Do not install near any heat sources such as radiators, heaters, stoves, or other apparatus (including amplifiers) that produce heat.
6. Do not defeat the safety purpose of the polarized or grounding-type plug. A polarized plug has two blades with one wider than the other.
7. Protect the power cord from being walked on or pinched particularly at plugs, convenience receptacles or at the point where they exit from the apparatus.
8. Only use attachments/accessories specified by the manufacturer.
9. Unplug this apparatus during lightning storms or when unused for long periods of time.
10. Refer all servicing to qualified service personnel. Servicing is required when the apparatus has been damaged in any way, for example, when the power-supply cord or plug is damaged, liquid has been spilled or objects have fallen into the apparatus, the apparatus has been exposed to rain or moisture, does not operate normally, or has been dropped.
11. The AC plug is used to disconnect the device, the disconnected device should remain readily operable. In order to disconnect the apparatus from the AC power completely, the AC plug must be removed from the AC outlet completely.

PREPARATION FOR USE

Unpacking and Set Up

Remove the Sound bar from the carton and remove all packing material from the Sound bar. Save the packing material, if possible, in case the Sound bar ever needs to be serviced or transported. The original carton and packing material is the only safe way to pack your Sound bar to protect it from damage in transit.

1. Remove any descriptive labels or stickers on the front or top of the cabinet. Do not remove any labels or stickers from the back or bottom of the cabinet.
2. Place your Sound bar on a level surface such as a table, desk or shelf, convenient to an AC outlet, out of direct sunlight, and away from sources of excess heat, dirt, dust, moisture, humidity, or vibration.
3. Unwind the Line cord connecting the AC adapter and extend it to its full length.

PROTECT YOUR FURNITURE

This model is equipped with non-skid rubber 'feet' to prevent the product from moving when you operate the controls. These 'feet' are made from non-migrating rubber material specially formulated to avoid leaving any marks or stains on your furniture. However certain types of oil based furniture polishes, wood preservatives, or cleaning sprays may cause the rubber 'feet' to soften, and leave marks or a rubber residue on the furniture. To prevent any damage to your furniture we strongly recommend that you purchase small self-adhesive felt pads, available at hardware stores and home improvement center everywhere, and apply these pads to the bottom of the rubber 'feet' before you place the unit.

POWER SOURCE

This sound bar is designed to operate on normal AC Power source. For Europe, it works only under SMPS 110V-240V ~ 50hz/60Hz. Do not attempt to operate the Sound bar on any other power source. You could cause damage to the Sound bar that is not covered by your warranty.

IMPORTANT NOTES

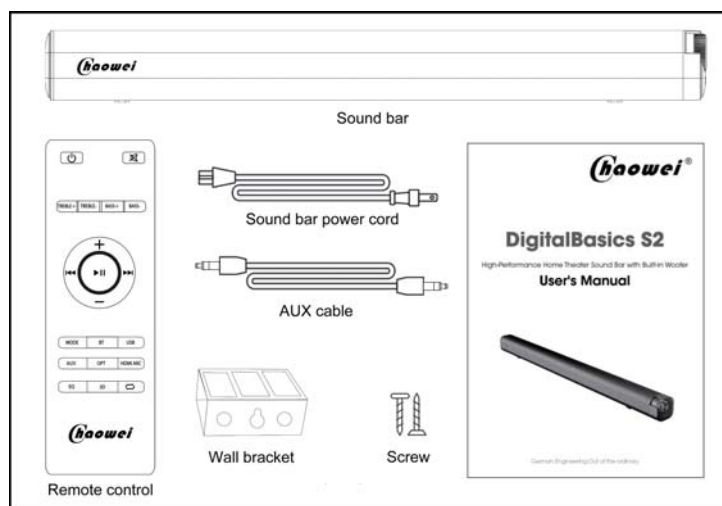
1. This sound bar was especially developed for LED/LCD/Plasma TV's: It should not be used in combination with CRTTV's (Cathode Ray Tube TV's) in order to avoid image interference.
2. Safety and operating instruction manual should be retained for future reference.
3. The apparatus should not be exposed to dripping, splashing or placed in a humid atmosphere such as a bathroom.
4. Do not install the product in the following areas:
5. Places exposed to direct sunlight or close to radiators.
6. On top of other stereo equipment that radiate too much heat -Blocking ventilation or in a dusty area.
7. Areas where there is constant vibration.
8. Humid or moist places.
9. Do not place near candles or other flames.
10. Operate the product only as instructed in this manual.
11. Before turning on the power for the first time, make sure the sound bar is plugged to power outlet.
12. For safety reasons, do not remove any covers or attempt to gain access to the inside of the product. Refer any servicing to qualified personnel.
13. Do not attempt to remove any screws, or open the casing of the unit; there are no user serviceable parts inside. Refer all servicing to qualified service personnel.

QUICK START GUIDE

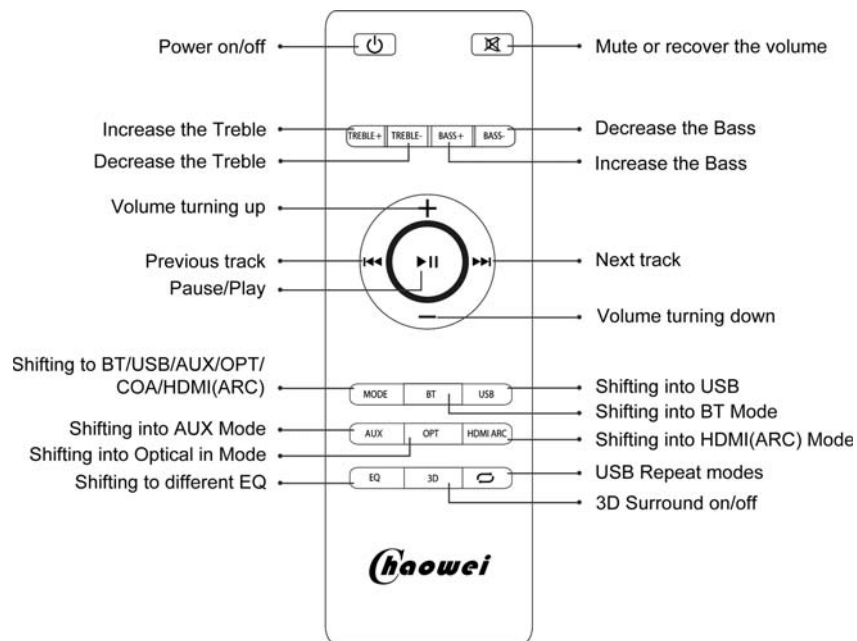
The Chaowei DigitalBasics S2 High-Performance Home Theater Sound Bar system is a compact yet powerful Bluetooth soundbar with sleek looks and excellent audio response. 6 built-in speakers and 2 bass air tube hole provide clarity across a broad frequency range, with crisp highs and deep bass that belie the unit's size. An integral USB port enables playback of MP3/WAV files directly from compatible media, with further flexible input options including Aux, HDMI(ARC), Optical, Coaxial and Bluetooth. A convenient and cost-effective TV audio upgrade that doesn't compromise on performance.

1. Slender and stylish metallic grey design
2. 6 speakers for crisp, clear sound with deep bass
3. Built-in 2.1 channel amplifier with 3 EQ presets
4. Versatile input options to support a range of devices
5. USB port for MP3 and WAV media playback
6. Remote control and Aux cable included

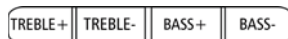
WHAT'S IN THE BOX



REMOTE CONTROL



Optimizing Your Listening Experience

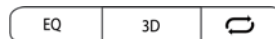


Bass +/- Control

Easily adjust low-frequency volume for more or less impact.

Treble +/- Control

Easily adjust high-frequency volume for more or less impact.



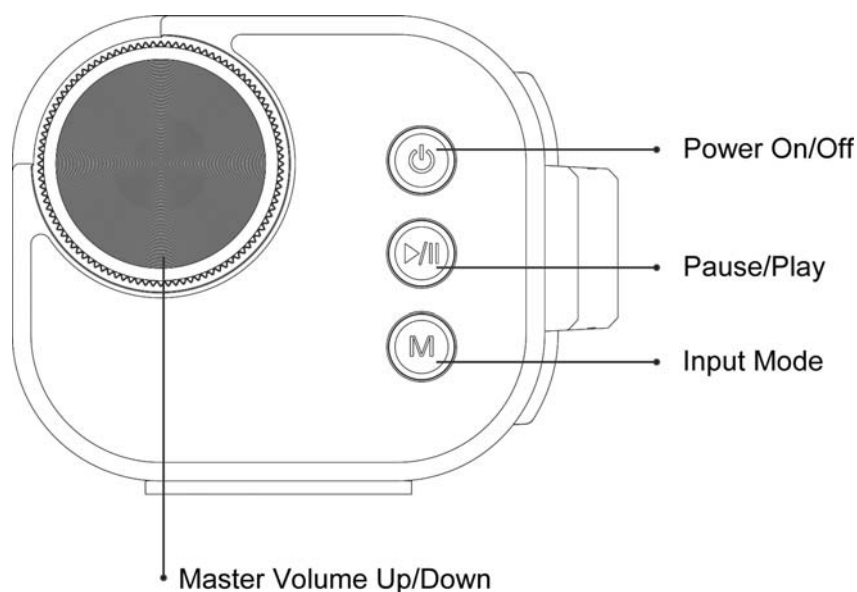
EQ Control

Easily shifting to different EQ. The soundbar has 3 equalizer presets, tailored to complement various styles of music. Press the EQ button on the remote to choose between Music (EQ1), Movie (EQ2), News (EQ3).

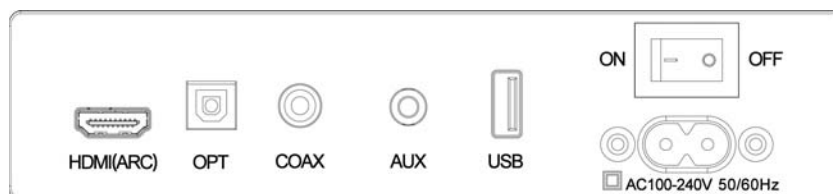
3D Control

3D Surround sound on/off

SOUND BAR SIDE CONTROL PANEL



SOUND BAR BACK PANEL



HDMI(ARC): Use to connect compatible devices using a HDMI cable (not provided).

OPTICAL : Use to connect compatible devices using an optical cable (not provided).

COAXIAL : Use to connect compatible devices using a coaxial cable (not provided).

AUX : Use to connect compatible devices using the 3.5mm – 3.5mm stereo jack cable (provided).

USB : Use to connect a flash drive for direct MP3/WAV files playback (FAT32 format and 64GB max).

AC 110-240V: Use to connect the AC power supply(provided power cord).

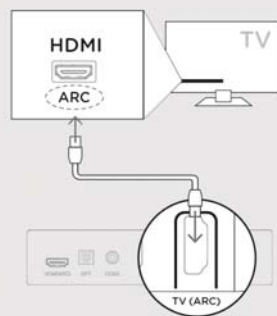
ON/OFF:Turn on/off the power

SETUP

1.Connecting Your DigitalBasics S2 to Your TV

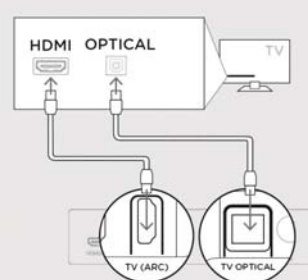
Is an HDMI input jack on your TV labeled "ARC"?

YES



Connect the your **HDMI cable**(not supplied) to the HDMI jacks labeled with "ARC" on both the TV and the sound bar.

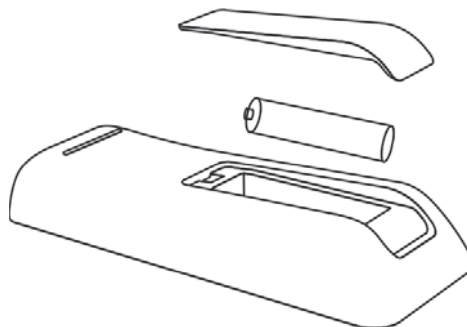
NO



Connect the your **Optical cable** (not supplied) between the TV and sound bar. Connect the your **HDMI cable** to any available HDMI jack on the TV and to the "TV ARC" connector on the sound bar.

2.Installing remote batteries

Insert the AAA battery to Remote .(Batteries are not included in the accessories for this sound bar)

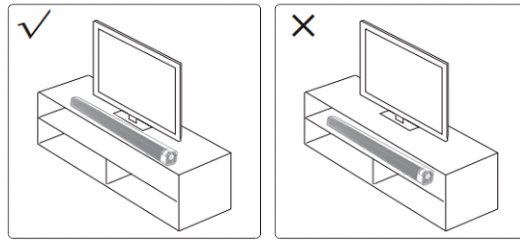


SETUP

3.Positioning the Sound Bar

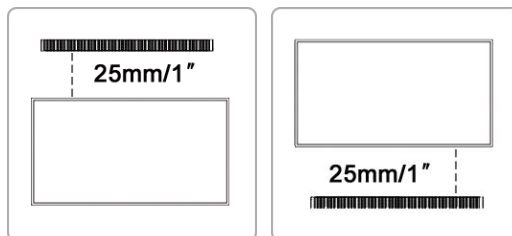
Place on a flat surface

For the best listening experience, place the sound bar horizontally on a flat surface such as a TV unit or shelves and align it centrally with the TV screen. Allow some space between the speaker and the wall. Don't place inside a cabinet or on a walled shelf. Follow this guidance for best sound output and good airflow around the sound bar.



Mount on the wall

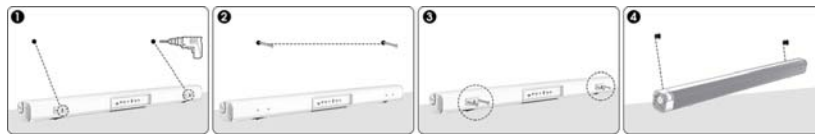
Warning: If you don't feel confident to correctly and securely wall-mount the sound bar, Seek the assistance of an experienced person or professional. Install the speaker on a vertical, flat, reinforced area of wall. For plaster walls, it is recommended to screw into wall studs for greater security. For optimum performance, allow at least 25mm/1" distance between the sound bar and the TV.



SETUP

Follow below steps to mount the sound bar on the wall

1. Make 2 holes on the wall with distance same as the wall bracket on the soundbar (Note: distance of two keyhole is 700mm).
2. Put the plastic anchors onto the wall and secure the screws to the plastic clip, do not tighten the screws all the way make sure leave some space.
3. Remove the 4 screws on the back of the sound bar, as shown in the picture3 , and then use the 4 screws to fix the two brackets in the accessories on the sound bully, as shown in the picture4.
4. Once the screws securely fastened, hang the sound bar over by inserting the screws onto the wall mount bracket .



4.Connect the sound bar power cord to an AC outlet

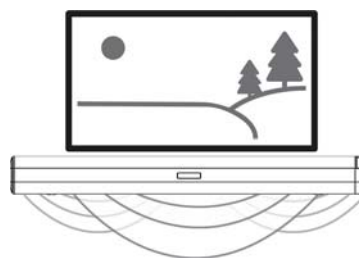


SETUP

Verifying your connections

Turn on your TV and verify that you are seeing video and hearing sound from the sound bar.



If you do not hear sound and do not see any lights on the front of your sound bar, press the power button on the sound bar to turn it on.



Note: If you are hearing sound from both your TV and your sound bar, you must manually turn off your TV speakers using the Settings Menu on your TV. Please refer to your TV's owner's manual for instructions.

OPERATE INSTRUCTIONS

Setting the Soundbar

1. Plug in the power cord and the display will light up, red light (Standby mode)
2. Switch on the soundbar by using power() button on soundbar or by using POWER button on remote. After switching on, the default input mode will appear on display.
3. Input mode can be changed by pressing the M () button again or by using the MODE button on remote.

LED Visual Indicators

LED Visual Indicators



The front of the sound bar contains a horizontal row of lights that provide status indications,

such as source, volume and listening modes.

Red LED light : Standby mode **bt**: Bluetooth mode

USB: USB media mode **AUX**: Auxiliary input mode

OPT: Optical mode **ARC**:HDMI(ARC)mode

COA: Coaxial mode

Remark:If nothing is done, the LED will automatically go off after 3 minutes.

OPERATE INSTRUCTIONS

Playing Audio via Bluetooth® Connection

1. To connect your device using Bluetooth, press the Bluetooth button (BT) on the remote or the "Mode" button on sound bar to switch to Bluetooth mode. A green "bt" light will slowly pulse on the sound bar as it waits to connect to your bluetooth device.

2. Go to the Bluetooth devices section on your phone, tablet or computer and select DigitalBasics S2. You will hear the "Connected" Voice and the green light stop to pulse when Bluetooth is connected. The soundbar will now automatically re-pair with this device whenever it is within range and has Bluetooth turned on.

NOTE: To take control when another device is connected, long press Bluetooth button on the remote 3 second, it will search your new Bluetooth device.

- If your Pairing device Switched off or Manual disconnected, the sound bar will automatically enter pairing mode.
- If the connected device is switched off or manual disconnected, the sound bar will automatically enter pairing successfully connected device will be re-established once you re-enter wireless range(10 meters). to connect to other devices, repeat the above pairing steps .
- There is no automatic shutdown in pairing mode. The sound bar will remain in pairing mode even if no device is paired, so switch off if not in use.
- How to hear your TV again: When you are finished using Bluetooth, press the "Mode" button on the sound bar or remote (USB, AUX, OPT, HDMI ARC).

OPERATE INSTRUCTIONS

Auto Standby

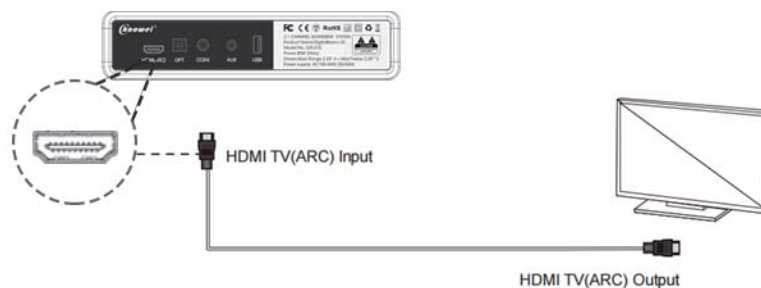
When there is no input signal and operation for 3 minutes, this unit automatically enters the standby mode.

Bluetooth Standby

When Bluetooth connection is made from a registered Bluetooth device, this unit turns on automatically.

HDMI (ARC)mode

1. The Soundbar supports HDMI with Audio Return Channel(ARC). If your TV is HDMI ARC compliant, you can hear the TV audio through your Soundbar by using a single HDMI cable (not supplied).
2. Using a High Speed HDMI cable, connect the HDMI TV(ARC) connector on the soundbar to the HDMI ARC connector on the TV. The HDMI ARC connector on the TV might be labelled differently. For details, see the TV user manual.
3. Select HDMI(ARC) mode either by pressing the HDMI(ARC) button on your remote control or repeatedly pressing the MODE button on the soundbar control panel until ARC is displayed on the LED display. Ensure HDMI ARC is selected as the TV's audio output, then adjust the volume of soundbar using the Volume up and Volume down buttons on the remote control or soundbar control panel.



OPERATE INSTRUCTIONS

AUX Mode

1. Connect the sound bar to your PC, tablet, smart phone, TV, CD player or other device using 3.5mm – 3.5mm stereo jack cable.
2. Select AUX mode either by pressing the AUX button on your remote control or repeatedly pressing the MODE button on the soundbar control panel until AUX is displayed on the LED display. Ensure the connected device is producing an audio signal, then adjust the volume of soundbar using the Volume up and Volume down buttons on the remote control or soundbar control panel..
3. In this mode, playback can only be controlled on your connected device.

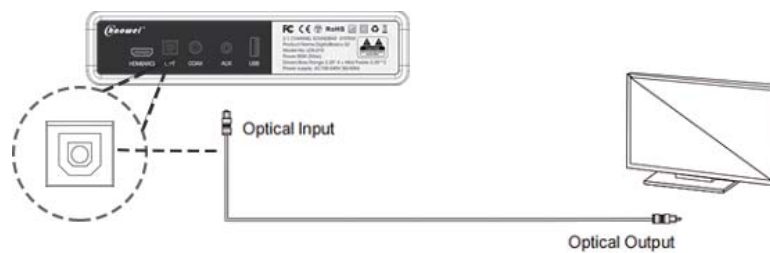
Note: For some computers, you may need to access the audio control panel to manually set the sound bar as below picture



OPERATE INSTRUCTIONS

Optical Mode

1. Connect a compatible device to the OPTICAL input on the soundbar using a digital optical cable (not supplied).
2. Use this operating mode to play music from the optical digital input for example from a TV on your soundbar. The TV must have an optical digital output. Proceed as follows:
 - Connect the optical cable to the optical digital output of your TV.
 - Then connect the optical cable to the optical digital input of your soundbar.
 - Switch the TV set and sound bar on. Set the connected TV to "PCM Stereo" or "Stereo 2.0". Ensure Optical SPDIF is selected as the TV's audio output.
 - Start playing on the TV.
 - Select OPT mode either by pressing the OPT button on your remote control or repeatedly pressing the MODE button on the soundbar control panel until OPT is displayed on the LED display.
 - You can use the volume buttons to adjust the volume to your requirements.
 - If you wish, you can change the audio settings using the relevant buttons on the remote control.



OPERATE INSTRUCTIONS

Coaxial Mode

1. Connect a compatible device to the COAXIAL input on the soundbar using a digital coaxial cable (not supplied).
2. Select COAX mode either by pressing the MODE button on your remote control or repeatedly pressing the MODE button on the soundbar control panel until COA is displayed on the LED display.
3. Ensure Coaxial is selected as the TV's audio output, then adjust the volume of the soundbar using the Volume up and Volume down buttons on the remote control or soundbar control panel.

Play Audio via USB media mode:

1. The soundbar is compatible with USB flash drives of up to 64GB (Fat32 format) in size and can play MP3 and WAV audio files directly.
2. Simply insert a compatible drive into the USB port on the back of the soundbar (or your own USB extension cable connected to the USB port) and the unit will automatically switch to USB mode and play the first compatible track.
3. Ensure that your USB flash drive contains MP3 or WMA audio files (other file types not supported).
4. USB repeat mode (also accessed via the remote control) enables single track repeat (ONE), all track repeat (ALL)

Note: The media player also has a memory function that will recall and continue from the last-played point when a USB flash drive that has previously been used with the soundbar is reinserted.

ADVANCED SETUP

Using Your TV or Cable/Satellite Remote to Control the DigitalBasics S2

There are two ways to use your TV, cable, or satellite remote to control DigitalBasics S2

HDMI CEC CONTROL

If your TV is connected via HDMI and your TV supports CEC (and it is enabled in the TV settings menu), you can control the volume and mute functions on DigitalBasics S2 from your TV without any further setup.

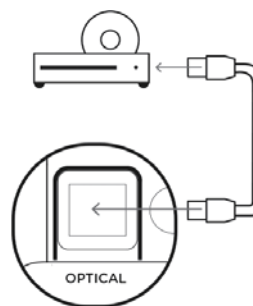
PRELOADED IR CODES

If your TV is connected via optical or your TV is connected via HDMI but your TV does not support CEC, you may be able to control the volume and mute functions on DigitalBasics S2 from your TV without any further setup if your TV is one of supported brands and was manufactured within the last 5 years.

Using the optical input for an audio source (FIGURE 1)

If you want to use the Optical input on the sound bar for another audio source such as a CD player, follow these steps:

1. Connect your TV to DigitalBasics S2 using HDMI-ARC.
2. Connect the Optical cable between the CD player and sound bar.
3. Turn on the CD player and press the OPT button, the audio is available from sound bar



Sound Bar Optical Input
FIGURE 1

ADVANCED SETUP

My TV doesn't have an HDMI or Optical outputs

If your TV does not have an HDMI ARC or Optical output you can connect the sound bar to your TV using the included 3.5mm analog AUX cable.

1. Connect the included AUX cable between your TV's audio output and the AUX input on the back of the sound bar.
2. Select AUX on the sound bar remote control.
3. Turn up the volume and make sure you hear sound from the sound bar.
4. Turn off the TV's speakers using your TV's Settings menu under "audio" or "speakers".

SPECIFICATIONS

Model NO.: LDS-210

Power consumption: 120W

Speaker drivers: 2.25"/15W full range speakers*2 + 2.25"/20W woofer*4 + Air tubes*2

Frequency: 55Hz-20KHz±3dB

SNR: >=75dB

Bluetooth version: 5.0+EDR

Bluetooth range: Up to 10m

Power supply: AC100-240V 50/60Hz

Operating temperature: 5°C - 35°C

Power consumption in standby mode: 0.5 W

Power consumption in Bluetooth standby: 1 W

Dimensions: 940 x 80 x 71mm

SPECIFICATIONS

Accessories:

User's manual x 1
 Remote control x 1
 Power cord x 1
 Aux-in cable x 1
 Wall-mounting kits x 1

TROUBLE SHOOTING

ISSUES	PROBLEMS	SOLUTIONS
Sound	No sound from SoundBar speakers	Connect the audio cable from your soundbar to your TV or other devices. However, you do not need a separate audio connection when the Soundbar and TV are connected through HDMI ARC connection.
		On the remote control, select the correct audio input.
	Distorted sound or echo	If you play audio from the TV through the soundbar, make sure that the TV is muted.
Bluetooth	A device cannot connect with the SoundBar	Restart the soundbar and try pairing again.
		You have not enabled the bluetooth function of the device. See the user manual of the device on how to enable the function.
		The device is not correctly connected.
		The soundbar is already connected with another bluetooth device. Disconnect the connected device, then try again.
	Quality of audio play from a connected Bluetooth device is poor.	The bluetooth reception is poor. Move the device closer to the soundbar, or remove any obstacle between the device and the soundbar.
	The connected Bluetooth device connects and disconnects constantly	The bluetooth reception is poor. Move the device closer to the soundbar, or remove any obstacle between the device and the soundbar.

ONE YEAR WARRANTY

ON PARTS AND LABOR

CHAOWEI provides a warranty to the original purchaser of a new Product against defects in materials and workmanship for a period of one year of non-commercial usage and ninety (90) days of commercial use.

If a Product covered by this warranty is determined to be defective within the warranty period, CHAOWEI will either repair or replace the Product at its sole option and discretion.

To obtain warranty service, contact CHAOWEI Technical Support via email: chaowei_cus@yeah.com . PREAUTHORIZATION MUST BE OBTAINED BEFORE DO ANY PRODUCT WARRANTY. Proof of purchase in the form of a purchase receipt or copy thereof is required to show that a product is within the warranty period

Parts and Labor

There will be no charge for parts or labor during the warranty period.

Replacement parts and Products may be new or recertified at CHAOWEI option and sole discretion. Replacement parts and Products are warranted for the remaining portion of the original warranty or for ninety (90) days from warranty service or replacement, whichever is greater.

Type of Service

Defective Products must be sent to a CHAOWEI service center to obtain warranty service. CHAOWEI is not responsible for transportation costs to the service center, but LEADSIGN will cover return shipping to the customer. PRE-AUTHORIZATION IS REQUIRED BEFORE SENDING ANY PRODUCT TO A LEADSIGN SERVICE CENTER FOR WARRANTY SERVICE.

ONE YEAR WARRANTY

Product returns to CHAOWEI's service centers must utilize both the original carton box and shipping material or packaging that affords an equal degree of protection. CHAOWEI Technical Support will provide instructions for packing and shipping the covered Product to the CHAOWEI service center.

Limitations and Exclusions

CHAOWEI's one-year limited warranty only covers defects in materials and workmanship. This warranty does not cover, for example: cosmetic damage, normal wear and tear, improper operation, improper voltage supply or power surges, signal issues, damages from shipping, acts of God, any type of customer misuse, modifications or adjustments, as well as installation and set-up issues or any repairs attempted by anyone other than by a CHAOWEI authorized service center. Products with unreadable or removed serial numbers, or requiring routine maintenance are not covered. This one year limited warranty does not cover Products sold "AS IS", "FACTORY RECERTIFIED", or by a non-authorized reseller.

THERE ARE NO EXPRESS WARRANTIES OTHER THAN THOSE LISTED OR DESCRIBED ABOVE.

ANY IMPLIED WARRANTIES, INCLUDING ANY IMPLIED WARRANTY OF MERCHANTABILITY AND FITNESS FOR A PARTICULAR PURPOSE, SHALL BE LIMITED IN DURATION TO THE PERIOD OF TIME SET FORTH ABOVE. CHAOWEI TOTAL LIABILITY FOR ANY AND ALL LOSSES AND DAMAGES RESULTING FROM ANY CAUSE WHATSOEVER INCLUDING CHAOWEI'S NEGLIGENCE, ALLEGED DAMAGE, OR DEFECTIVE GOODS, WHETHER SUCH DEFECTS ARE DISCOVERABLE OR LATENT, SHALL IN NO EVENT EXCEED THE

ONE YEAR WARRANTY

PURCHASE PRICE OF THE PRODUCT. LEADSIGN SHALL NOT BE RESPONSIBLE FOR LOSS OF USE, LOSS OF INFORMATION OR DATA, COMMERCIAL LOSS, LOST REVENUE OR LOST PROFITS, OR OTHER INCIDENTAL OR CONSEQUENTIAL DAMAGES. SOME STATES DO NOT ALLOW LIMITATIONS ON HOW LONG AN IMPLIED WARRANTY LASTS OR THE EXCLUSION OF INCIDENTAL OR CONSEQUENTIAL DAMAGES, SO THE ABOVE LIMITATIONS OR EXCLUSIONS MAY NOT APPLY TO YOU. THIS

WARRANTY GIVES YOU SPECIFIC LEGAL RIGHTS, AND YOU MAY ALSO HAVE OTHER RIGHTS, WHICH VARY FROM STATE TO STATE. THIS WARRANTY IS SUBJECT TO CHANGE WITHOUT NOTICE

Manufacturer's warranties may not apply in all cases, depending on factors such as use of the product, where the product was purchased, or who you purchased the product from. Please review the warranty carefully, and contact the manufacturer if you have any questions.

Thank you for your CHAOWEI purchase again. If you have a question or comment, please feel free to email us.

Technical Assistance

Pls contact CHAOWEI Customer Service by Email:

chaowei_cus@yeah.com

(8 p.m.–11:30 p.m. EST) In North America

(1 p.m.–10:00 p.m. EST) In Europe

(9 a.m.–5:30 p.m. EST) In all other countries.

Remark: All other trademarks, product names, logos, and brands referenced herein are the property of their respective owners

REMARK:



The terms HDMI, HDMI High-Definition Multimedia Interface, and the HDMI Logo are trademarks or registered trademarks of HDMI Licensing Administrator, Inc.



The Bluetooth® word mark and logos are registered trademarks owned by the Bluetooth SIG, Inc. and any use of such marks by CHAOWEI is under license. Other trademarks and trade names are those of their respective owners.



Printed in China

FCC Caution:

This device complies with part 15 of the FCC Rules. Operation is subject to the following two conditions: (1) This device may not cause harmful interference, and (2) this device must accept any interference received, including interference that may cause undesired operation.

Any Changes or modifications not expressly approved by the party responsible for compliance could void the user's authority to operate the equipment.

Note: This equipment has been tested and found to comply with the limits for a Class B digital device, pursuant to part 15 of the FCC Rules. These limits are designed to provide reasonable protection against harmful interference in a residential installation. This equipment generates uses and can radiate radio frequency energy and, if not installed and used in accordance with the instructions, may cause harmful interference to radio communications. However, there is no guarantee that interference will not occur in a particular installation. If this equipment does cause harmful interference to radio or television reception, which can be determined by turning the equipment off and on, the user is encouraged to try to correct the interference by one or more of the following measures:

- Reorient or relocate the receiving antenna.
- Increase the separation between the equipment and receiver.
- Connect the equipment into an outlet on a circuit different from that to which the receiver is connected.
- Consult the dealer or an experienced radio/TV technician for help.

This equipment complies with FCC radiation exposure limits set forth for an uncontrolled environment.