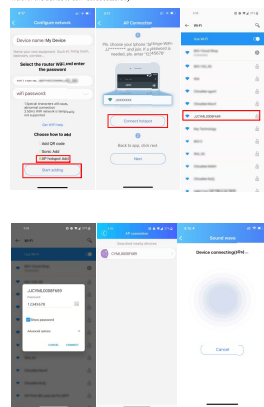


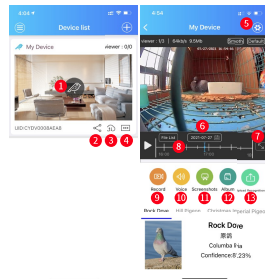
c) By AP hotspot
 Select "By AP hotspot", click "Start adding", click "Connect to spot" and select the hotspot of device "11111111" and enter the initial password "12345678". Then return to the AP and click "Next", press the device to be connected. Wait for the device to connect successfully.



- 09 -

6. Function introduction

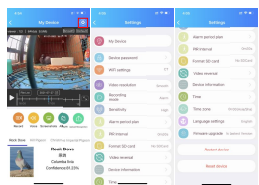
- ① Go to the page of live video
 - ② Share
 - ③ Click on storage
 - ④ Playback
 - ⑤ Settings
 - ⑥ Share
 - ⑦ If the screen playback
 - ⑧ Playback list (Only those with a TransFlash card can watch the video playback)
- This device does not provide TF card, if you need it, please purchase a suitable TransFlash card by yourself.
- ⑨ Record
 - ⑩ View
 - ⑪ Screenshot
 - ⑫ Album
 - ⑬ Upload recognition



- 10 -

7. Setting Function

1. My Device: Change device name.
2. Device password: Change device password.
3. WiFi Settings: Enter the WiFi name and password to change the WiFi of device.
4. Video resolution: Set HD, 30 and Smooth resolution.
5. Recording mode: Default Alarm.
- a) Alarm: The camera records and notifies when there comes a bird.
- b) Disabled: The camera stops recording and notifying.
6. Sensitivity: Default is High.
- a) High: When a bird enters the bird's swimming range of camera, the device detects the bird and triggers the bird's voice, so that your mobile phone will receive a notification of bird visitor.
- b) Disabled: The camera stops recording and notifying.
7. Alarm period plan: Set the notification time of bird visitors. You will receive notifications of bird visitors during the plan period, and you will not receive notifications outside the plan period.
8. IR Interval: The interval time of bird visitor notification can be set from 3 seconds to 10 minutes.
9. Format SD card: Set the TransFlash card.
10. Video reverse: The screen can be flipped 180 degrees.
11. Device information: View the device model, firmware version, storage space, remaining space and battery level.
12. Time zone: The time zone of device can be synchronized with mobile phones.
13. Time zone: The time zone of device can be synchronized with mobile phones.
14. Language settings: English and Chinese prompts can be set.

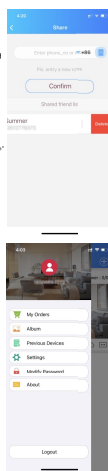


- 11 -

8. Share

Users can share the device with family and friends.

1. List or select multiple (home contacts and enter a secret name to share with) items. If you share 3 devices at the same time, 2. The users who are shared with the device they need to download the app and register account according to the instructions in Step 2 and Step 3.
3. If you want to delete the shared user, select the content on the shared friend list and tap on it, then click "Delete sharing" on the right side, click it to delete the shared account.



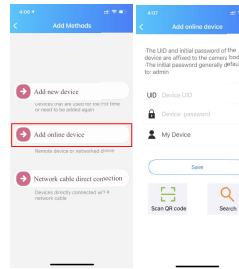
- 12 -

9. User center

1. Account View and manage saved bird photos.
2. Settings: Set the notifications.
3. Modify Password.
4. About: User Center agreement and common problem description.

10. Add online device

1. Connect the mobile phone network to the device hotspot (password: 12345678) or to the router which the device is connected.
2. Add a device by the following three methods:
 - a) Scan QR code: Scan the barcodes or QR code of the device and enter the password (the default password is admin), click "Save" the device is added successfully.
 - b) LAN search: Click LAN search, select the device you want to add, enter the device password, click "Save", the device is added successfully.
 - c) Manually add: Enter the IP number and password at the device, click "Save", the device is added successfully.
3. Access the device: After the device is added successfully, you can click the new device in the device list to watch real-time video.



- 13 -

11. Specifications of bird feeder

Product name: Smart bird feeder
 Model number: PCDD01
 Main Materials: PC+ABS, metal parts
 Dimensions: 200*150*225mm
 Color box size: 238*170*220mm
 N.W.: About 1045g
 G.W.: About 1410g
 Seed capacity: 720ml
 Mounting: Wall mount

Camera: 2 megapixel photos and 1080P HD live stream video
 Field of view: 165 degrees
 Audio: Microphone
 Voltage: 5V
 Battery capacity: 6400mAh
 Charging time: About 8 hours
 Charging: USB-C charging cable
 Connectivity: 2.4G (802.11 B/G/N) WiFi connection
 Operating: -15°C to 49°C

- 14 -

12. Caution

1. The effective distance from the product to the router is 10m. If the network signal is too poor, please place the product in the effective distance or buy a repeater to enhance the network signal.
2. We do not provide TransFlash card. If you need it, please purchase a suitable TransFlash card by yourself. This product supports 8G to 128G high-speed TransFlash card (CLASS 10).
3. The screwdriver is only used to remove the battery cover to insert the TransFlash card. Do not disassemble, modify, or repair this product yourself, as it may cause internal damage.
4. Please pay attention to the positive and negative terminals of the battery and install the battery correctly.
5. Do not use batteries other than those specified.
6. The red light is on when the product is charging.
7. If the product is abnormally hot or deformed during charging, stop charging immediately.
8. Do not hit or drop the product, as it may cause internal damage.
9. This product is not completely waterproof, please do not put the product into the water.
10. Do not place the product in a fire, as it may explode.

- 15 -

11. This device complies with Part 15 of the FCC rules and Industry Canada license-exempt RSS (Standard).
 Operation is subject to the following two conditions:
 (1) This device may not cause harmful interference, and
 (2) This device must accept any interference received, including interference that may cause undesired operation.

The manufacturer is not responsible for any radio or TV interference caused by unauthorized modifications or changes to this equipment. Such modifications or changes could void the user's authority to operate the equipment.

This equipment has been tested and found to comply with the limits for a Class B digital device, pursuant to part 15 of the FCC Rules. These limits are designed to provide reasonable protection against harmful interference in a residential installation. This equipment generates, uses and can radiate radio frequency energy and, if not installed and used in accordance with the instructions, may cause harmful interference to radio communications. However, there is no guarantee that interference will not occur in a particular installation. If this equipment does cause harmful interference to radio or television reception, which can be determined by turning the equipment off and on, the user is encouraged to try to correct the interference by one or more of the following measures:

- Reorient or relocate the receiving antenna.
- Increase the separation between the equipment and receiver.
- Connect the equipment to an outlet on a circuit different from that to which the receiver is connected.
- Consult the dealer or an experienced radio/TV technician for help.

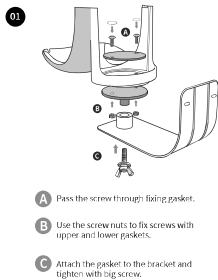
To maintain compliance with FCC's RF exposure guidelines, this equipment should be installed and operated with a minimum distance of 20cm between the radiator and your body.

- 16 -

1. Included items

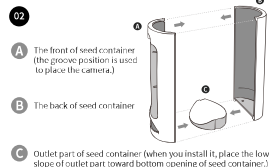
- 1 X Camera module
- 1 X Bird feeder
- 1 X Bottom mount
- 1 X USB-C charging cable
- 1 X Screwdriver
- 1 X User manual

2. How to install the bird feeder



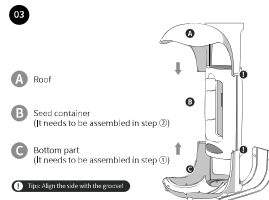
- A** Pass the screw through fixing gasket.
- B** Use the screw nuts to fix screws with upper and lower gaskets.
- C** Attach the gasket to the bracket and tighten with big screw.

- 01 -



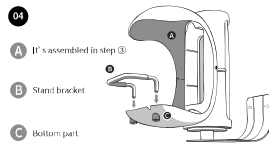
- 02**
- A** The front of seed container (the groove position is used to place the camera.)
- B** The back of seed container
- C** Outlet part of seed container (when you install it, place the low slope of outlet part toward bottom opening of seed container.)

Installation method:
Combine and install component C between component A and B.



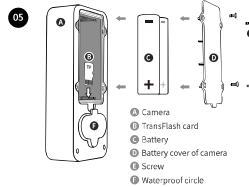
- 03**
- A** Roof
- B** Seed container (It needs to be assembled in step 02)
- C** Bottom part (It needs to be assembled in step 02)
- Tip:** Clean the side with the gasket!

- 02 -



- 04**
- A** It's assembled in step 03
- B** Stand bracket
- C** Bottom part

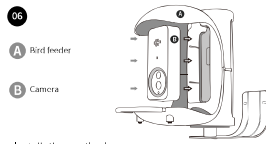
Installation method:
Align part B with the hole of part C and install it.



- 05**
- A** Camera
- B** TransFlash card
- C** Battery
- D** Battery cover of camera
- E** Screw
- F** Waterproof circle

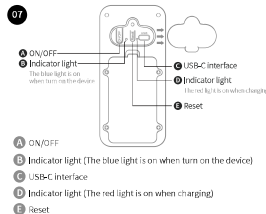
Installation method:
Loosen the screws (component E) and open battery cover (component D), then take out the battery (component C), insert TransFlash card (component B) into card slot. Please install the battery (component B) correctly according to the picture. Install and tighten the battery cover with screws.

- 03 -



- 06**
- A** Bird feeder
- B** Camera
- C** Camera

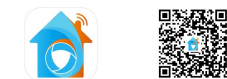
Installation method:
Install the camera (component B) at the groove of the seed container (component A).



- 07**
- A** ON/OFF
- B** Indicator light (The blue light is on when turn on the device)
- C** USB-C interface
- D** Indicator light (The red light is on when charging)
- E** Reset

- 04 -

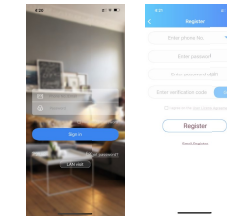
3. Download JJhome APP



- Search for the JJhome APP in Google Play, App Store, and Android Market and download it.
- Scan the above QR code to download the JJhome APP.

4. Register account

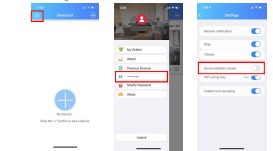
- If you don't have an account, please click "register". According to the interface prompts register a new account and log in.
- If you have an account, please fill it out and log in.



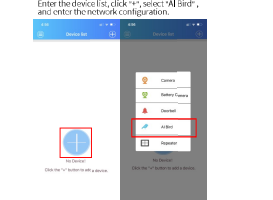
- 05 -

5. Add device

- How to add:**
After installing JJhome APP, the guiding function will be turned on by default. For the first time, if you need to turn on the guiding function again, please click the button in the upper left corner of the device list. After entering "User Center" click "Settings" to turn on "Adding Use Guide".

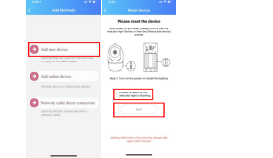


- Select device type:**
Enter the device list, click "+", select "All Bird", and enter the network configuration.

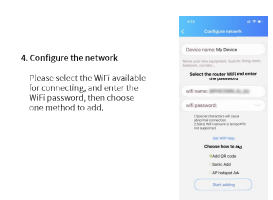


- 06 -

- Select "Add new device":**
Press on-off key and the blue light flashes. (If you press on-off key and blue light does not flash, it means shutdown.) Long press the reset button, when you hear a message indicating that "Reset device reset successfully" (blue light flashing) click "A beep is heard or the indicator light is flashing" and click "Next".

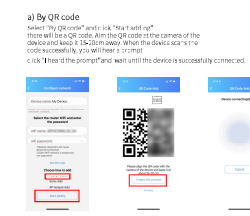


- Configure the network:**
Please select the WiFi available for connecting, and enter the WiFi password, then choose one method to add.

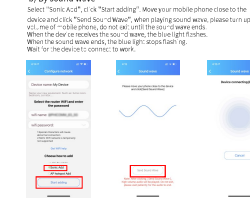


- 07 -

- Adding methods:**
Select the appropriate method to add device. There are three methods to add device.



- By sound wave:**
Select "Sound Wave", click "Start adding". Move your mobile phone close to the device and click "Sound Wave" when playing sound wave, please turn up the volume of mobile phone, do not let the sound wave ends. When the device receives the sound wave, the blue light flashes. When the sound wave ends, the blue light stops flashing. Wait for the device to connect to work.



- 08 -