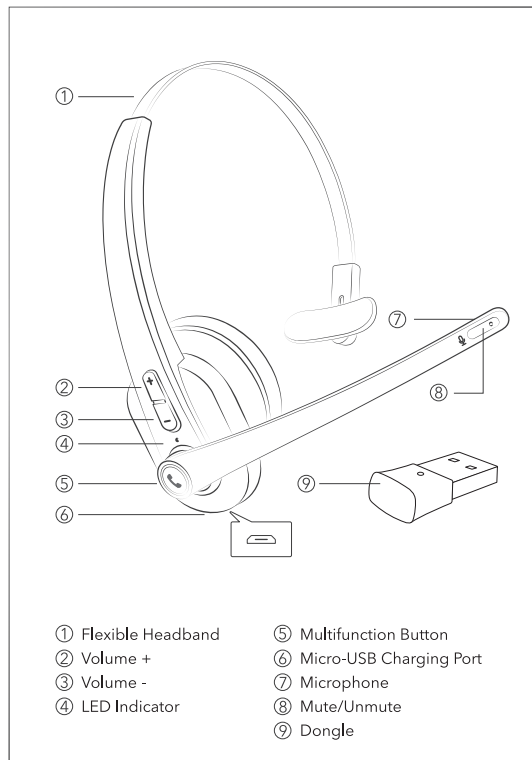


Eitipok

Product Diagram



Package Contents

- 1 x Wireless Mono Headset
- 1 x Micro-USB Charging Cable
- 1 x User Guide
- 1 x PC Adapter

Model: EP-BH100
 Wireless Mono Headset
User Guide

How to Use

1. Charging

- 1) Connect the charging port with any USB charging adapter or active computer USB port.
- 2) Charging will start automatically with the LED indicator turning red.
- 3) The headset is fully charged when the LED indicator turns off.

2. Pairing

- 1) Make sure the headset and your Bluetooth® device are close to each other (within 3 feet / 1 meter).
- 2) When the headset is off, press and hold the Multifunction Button for 5 seconds to bring the headset into pairing mode with the LED indicator flashing blue and red alternately.
- 3) Activate Bluetooth® on your phone and search for nearby Bluetooth® connections.
- 4) Find "EP-BH100" in the search results. Tap on the name to connect. Once connected, the LED indicator will flash blue once every 5 seconds.

NOTE:

When using EP-BH100 with the dongle, please refer to EP-BH100 & PC Adapter Paring Instruction in another file

3. Automatic Re-pairing

- 1) The headset has been paired with one device before.
- 2) When the headset is off, press and hold the Multifunction Button for 3 seconds to bring the headset into auto re-pairing mode with the LED indicator flashing blue slowly.
- 3) The headset can remember device paired previously and will connect to the last connected device automatically.

4. Clear Pairing History

- 1) If the headset fails to pair with your Bluetooth® device, clear

✉ support@eitipok.com



FC CE 
 MADE IN CHINA

the pairing history by pressing and holding the Multifunction and Volume - Buttons simultaneously when the headset is on until the LED indicator flashes red and blue at the same time indicating clearing successfully. Then re-pair your Bluetooth® device as instructed in Pairing.

NOTE:

Clearing Pairing History won't clear the pairing information between EP-BH100 and the dongle.

2) If you want to pair the headset with second device when already paired, press Multifunction Button twice to enter pairing mode. (*This operation will not disconnect the initial connected device)

Button Control

Function	Operation
Power On/Off	Press and hold the Multifunction Button for 2 seconds
Pair a new device	Press the Multifunction Button twice
Voice Control	Press and hold the Multifunction Button for 1 second
Answer Calls	When there is an incoming call, press the Multifunction Button once
Reject Calls	When there is an incoming call, press and hold the Multifunction Button for 1 second
End Calls	During a call, press the Multifunction Button once

Mute Calls	During a call, press the Microphone Button once. Press again to normal calls
Transfer Calls	During a call, press and hold the Multifunction Button for 1 second to transfer the call between the phone and the headset
Second Call	When there is a second incoming call (B) in the course of an ongoing call (A), <ul style="list-style-type: none"> • Press the Multifunction Button once to answer B and hang up A • Press the Multifunction Button twice to answer B and on-hold A • Press and hold the Multifunction Button for 2 seconds to reject B During a second call, press the Multifunction Button twice to transfer calls between A and B
Volume + / -	Press the Volume + / - Button
Previous / Next Track	Press and hold the Volume - / + Button for 1 second
Pause / Play	Press the Multifunction Button

A Noise-free Telephone Call Starts from THIS...

Eitipok EP-BH100 powered by Elevoc Vocplus® AI noise reduction technology can help you remove unwanted background noises from your high-value business calls. By leveraging powerful Computational Auditory Scene Analysis (CASA) and Deep Neutral Network (DNN), Elevoc Vocplus® could simulate the human auditory system and precisely extract your voice from background noise, delivering the first-ever clear voice quality and optimized speech intelligibility.

CUSTOMER SERVICE

Delivering world-class support via clear, comfortable and intelligible speech means everything in your business. Eitipok EP-BH100 powered by Elevoc Vocplus® eliminates different types of background noise and enables the other ones to hear you clearly and understand you at ease.

CALL CENTER

Customers don't want to hear disturbing sounds such as phone ringing, keyboard tapping, machinery, babble noise, air conditioner, etc.. Eitipok EP-BH100 powered by Elevoc Vocplus® help you solve the noise interference problem and make your customers hear nothing but your clear voice.

NOTE: This equipment has been tested and found to comply with the limits for a Class B digital device, pursuant to part 15 of the FCC Rules. These limits are designed to provide reasonable protection against harmful interference in a residential installation. This equipment generates uses and can radiate radio frequency energy and, if not installed and used in accordance with the instructions, may cause harmful interference to radio communications. However, there is no guarantee that interference will not occur in a particular installation. If this equipment does cause harmful interference to radio or television reception, which can be determined

by turning the equipment off and on, the user is encouraged to try to correct the interference by one or more of the following measures:

- Reorient or relocate the receiving antenna.
- Increase the separation between the equipment and receiver.
- Connect the equipment into an outlet on a circuit different from that to which the receiver is connected.
- Consult the dealer or an experienced radio/TV technician for help

Changes or modifications not expressly approved by the party responsible for compliance could void the user's authority to operate the equipment. This device complies with Part 15 of the FCC Rules. Operation is subject to the following two conditions: (1) this device may not cause harmful interference, and (2) this device must accept any interference received, including interference that may cause undesired operation.

Radiation Exposure Statement

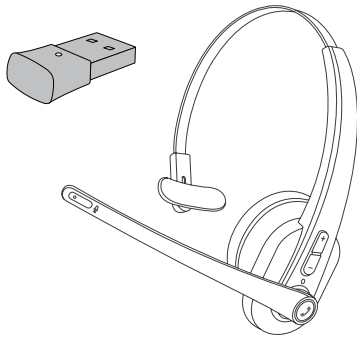
The device has been evaluated to meet general RF exposure requirement in portable exposure condition without restriction.



WEEE Compliance

Correct Disposal of This Product (Waste Electrical & Electronic Equipment) (Applicable in countries with separate collection systems) This marking on the product, accessories or literature indicates that the product and its electronic accessories should not be disposed of with other household waste at the end of their working life. To prevent possible harm to the environment or human health from uncontrolled waste disposal, please separate these items from other types of waste and recycle them responsibly to promote the sustainable reuse of material resources. Household users should contact either the retailer where they purchased this product, or their local government office, for details of where and how they can take these items for environmentally safe recycling. Business users should contact their supplier and check the terms and conditions of the purchase contract. This product and its electronic accessories should not be mixed with other commercial wastes for disposal.

Eitipok



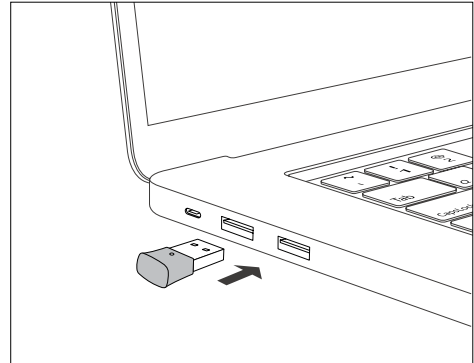
EP-BH100 & PC Adapter Pairing Instruction

When using EP-BH100 Wireless Mono Headset on PC, it is recommended to connect via the included USB Wireless Dongle.

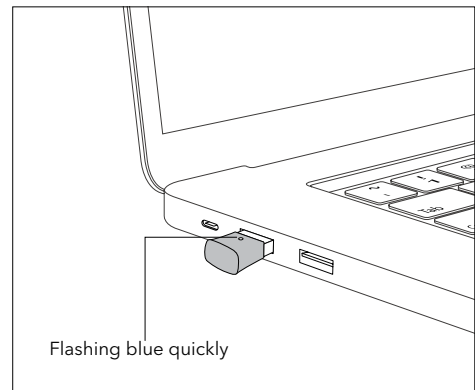
01

1. Activate USB Wireless Dongle

- 1) Plug the Wireless Dongle into a USB port on your computer, it will be turned on automatically.



- 2) Once turned on, the indicator on the Dongle will flash quickly in blue indicating it is in pairing mode now.

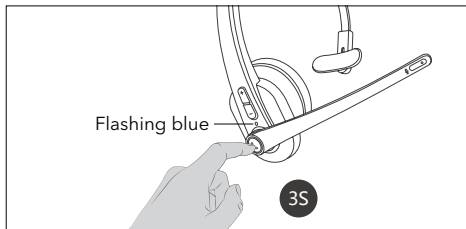


02

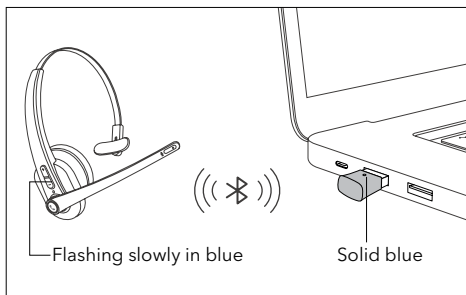
2. Initial Pairing EP-BH100 with Wireless Dongle

Before pairing, please disable the Bluetooth function on your phone/computer previously connected with EP-BH100.

- 1) Press and hold the Multifunction Button on EP-BH100 for 3 seconds to bring the headset into Auto Re-pairing mode with the LED indicator flashing blue.
- 2) Dongle will connect with the headset automatically.



Once connected, the indicator on the Dongle will stay solid blue. The indicator on the headset will flash blue.



03

3. Automatic Re-pairing

EP-BH100 can remember the Dongle paired previously. After being paired successfully for the first time, make sure the Wireless Dongle is plugged in the computer first and then turn on EP-BH100.

4. Using Headset with Dongle and Phone/Computer for Calls

Your EP-BH100 headset can be used with Dongle and your phone/computer at a time.

1. Make sure the Dongle is plugged in and the Bluetooth function on your phone/ computer is enabled before turning on EP-BH100.
2. Music will be played via the Dongle. Your phone/ computer is for calls.

5. Troubleshooting

Q: The Wireless Dongle won't turn on after plugging into the USB port.

A: Try another USB port. After being plugged in, the Dongle will power on automatically and the indicator flashes blue quickly.

Q: The Wireless Dongle doesn't pair with EP-BH100.

A: Please make sure the Wireless Dongle is in pairing mode and EP-BH100 is in auto re-pairing mode, and wait them to pair automatically.

Q: The Wireless Dongle won't auto-reconnect with EP-BH100.

A: Please make sure you plug in the Dongle first and then turn on EP-BH100.

Q: Unable to play music after connected with EP-BH100.

A: Check if your headset is used with Dongle and your phone/computer at the same time. If yes, music can be played via the Dongle only.