

**Download Free APP:**

Available on the App Store and Google Play.

Can't connect? Need help?  
Email: [service.2@xmcosy.com](mailto:service.2@xmcosy.com)

**INTRODUCTION**

Thanks for choosing XMCOSY+ Low Voltage Mushroom Lights. Please read the user manual carefully and keep it for future reference.

**SAFETY INSTRUCTIONS**

Read and follow all safety instructions before installing the low voltage mushroom lights.

- Sockets used to power mushroom lights should comply with all national and local electrical codes. If you are unsure of compliance requirements, please consult your local electrician.
- Do not use in water. Please connect power cords in deep together and tighten the protective cover. Especially for the interface at the end, please be sure to put on the protective cover. Keep the plug and socket dry.
- Please keep children away from these lights.
- Keep lights away from flammables and fire sources.
- Avoid placing the lights near potentially dangerous sources.

**DO NOT EXCEED RATED CAPACITY.**

FCC Warning Statement  
Changes or modifications not expressly approved by the party responsible for compliance could void the user's authority to operate the equipment. This equipment has been tested and found to comply with the limits for a Class B digital device, pursuant to part 15 of the FCC Rules. These limits are designed to provide reasonable protection against harmful interference in a residential installation. This equipment generates uses and can radiate radio frequency energy and, if not installed and used in accordance with the instructions, may cause harmful interference to radio communications. However, there is no guarantee that interference will not occur in a particular installation. If this equipment does cause harmful interference to radio or television reception, which can be determined by turning the equipment off and on, the user is encouraged to try to correct the interference by one or more of the following measures:  
-Reorient or relocate the receiving antenna.  
-Increase the separation between the equipment and receiver.  
-Connect the equipment into an outlet on a circuit different from that to which the receiver is connected.  
-Consult the dealer or an experienced radio/TV technician for help.

FCC Radiation Exposure Statement  
The antenna used for this transmitter must be installed to provide a separation distance of at least 20 cm from all persons and must not be co-located for operating in conjunction with any other antenna or transmitter.

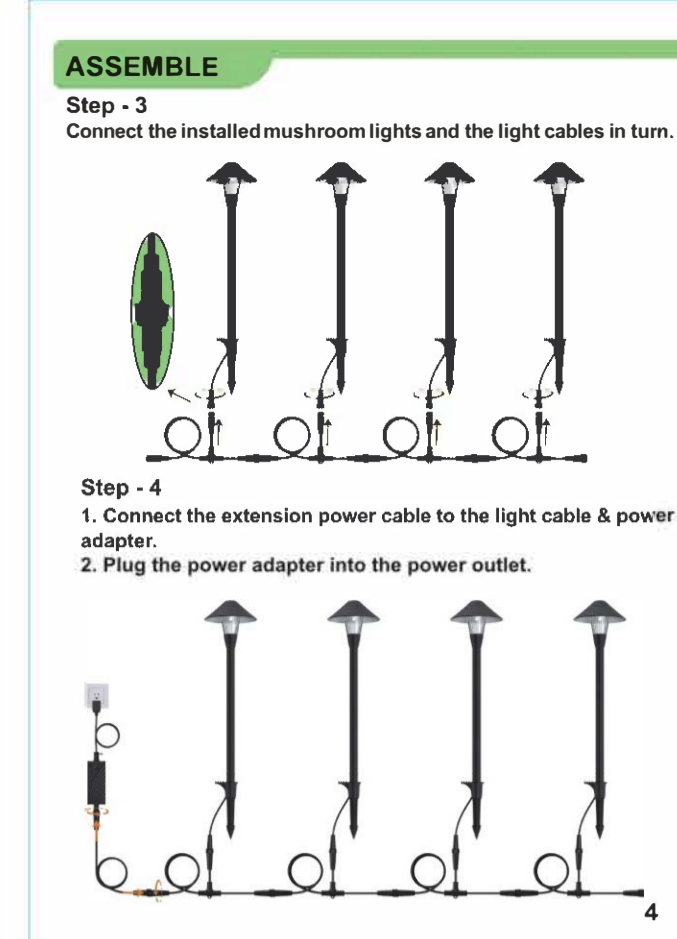
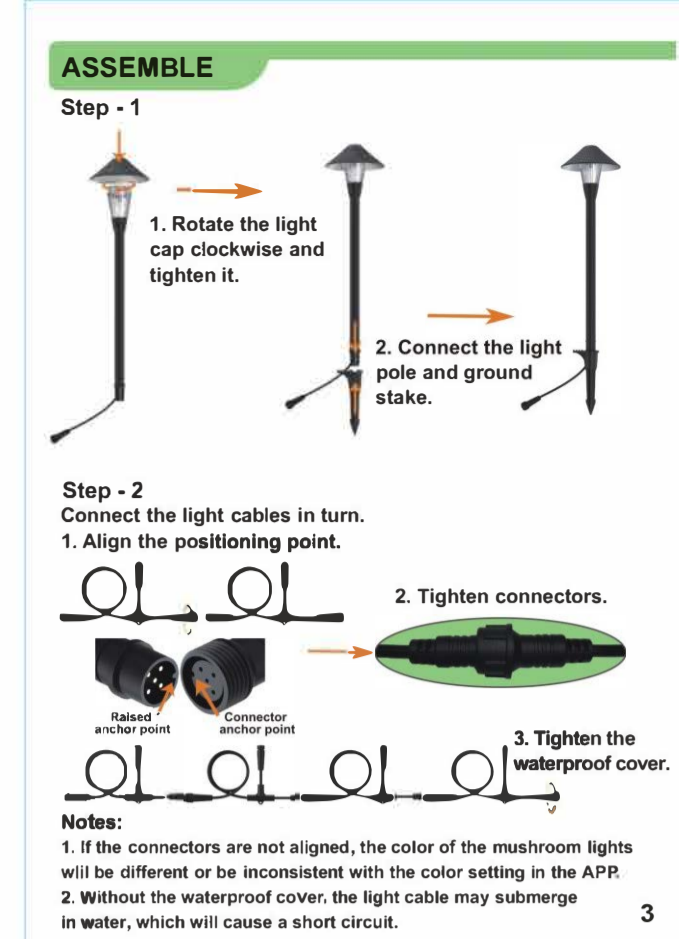
**CONTENT**

- Specifications 1
- Package Contents 2
- Assemble 3
- Button Function Introduction 5
- Service & Warranty 6
- APP Download & Registration 7
- Distribution Network & APP Connection 10
- APP Functions 14
- Alexa Pairing Instruction 18
- Google Assistant Pairing Instruction 23
- Troubleshooting 26
- Contact 27

**SPECIFICATIONS**

Brand	XMCOSY+
Model	YJ-312-4-MG
Dimension	6" D x 22" H/EA
Total Length	48FT(14.6M)
Weight	3.66 KGS
Material	Aluminum + Stainless steel + PC
Light Source	Integrated LED
Luminous Flux	200 Lumens/EA
Color Temperature	2700K Warm White + RGB
Input Voltage	120V AC, 50/60Hz
Output Voltage	12V DC Max. 3A
Wattage	6W/EA
Max.Of Connections	36 Wattage
Controlled By	Button/APP Control
Dimmable	YES

- PACKAGE CONTENTS**
1. Mushroom Light \* 4
  2. Aluminum Light Cap \* 4
  3. Aluminum Ground Stake \* 4
  4. 8.2FT Light Cable\* 4
  5. 13.1FT Extension Power Cable \* 1
  6. 36W Power Adapter \* 1
  7. User Manual \* 1
- Notes:  
After unpacking, please check the product accessories. If there are any missing or damaged accessories, please contact us as soon as possible, and our customer service team will solve it in time.  
[service.2@xmcosy.com](mailto:service.2@xmcosy.com)



**BUTTON FUNCTION INTRODUCTION**

**Button Function Introduction:**

1. Long press - Enter the APP connection & network mode. Long press the button for 5S, the light flashes quickly, and the product enters the distribution network mode. (When the product is used for the first time, it will automatically enter the network distribution state after connecting to the power supply, without pressing any buttons.)
2. Short press - ON/OFF & Change scene modes 8 modes(4 kinds of warm white and 4 kinds of color light) Short pressing the button, the mode changes in turn as follows:  
\* ON(Gorgeous)  
\* Good night  
\* Reading  
\* Working  
\* Leisure  
\* Grassland  
\* Colourful  
\* Dazzling  
\* Gorgeous  
\* OFF

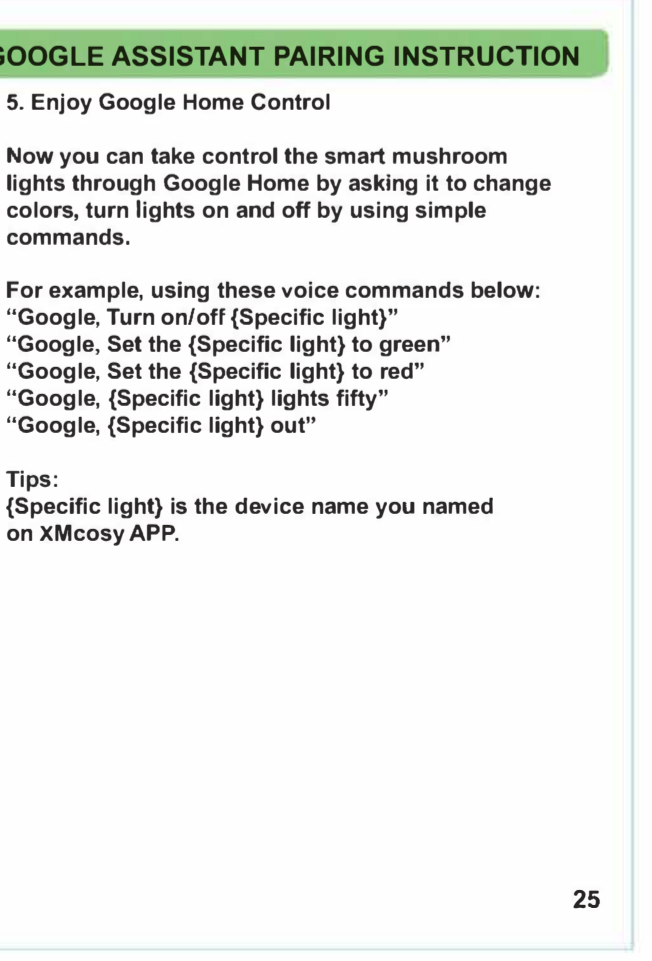
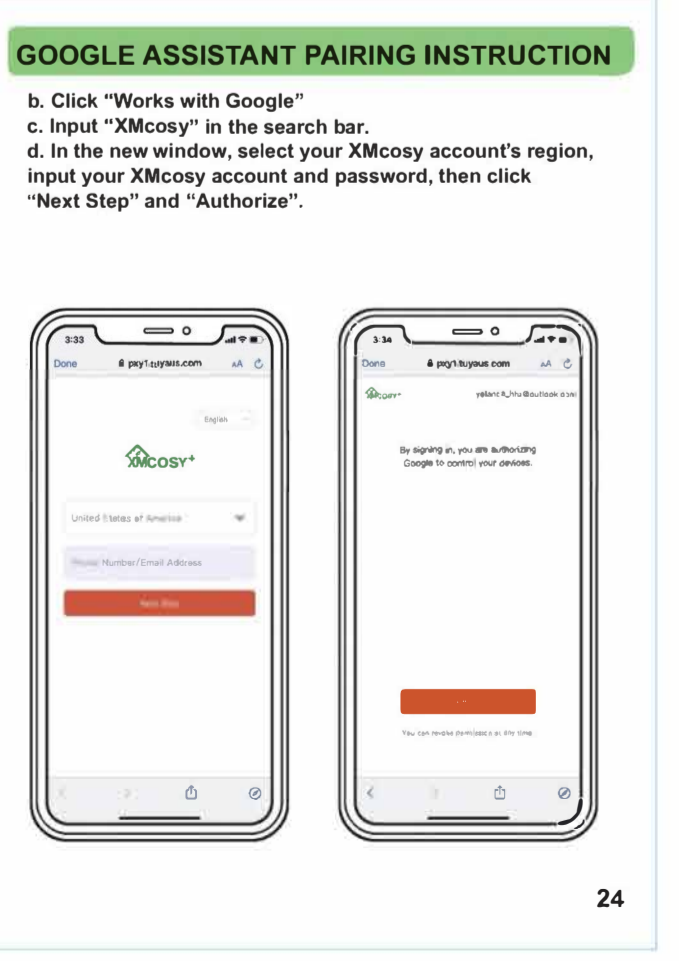
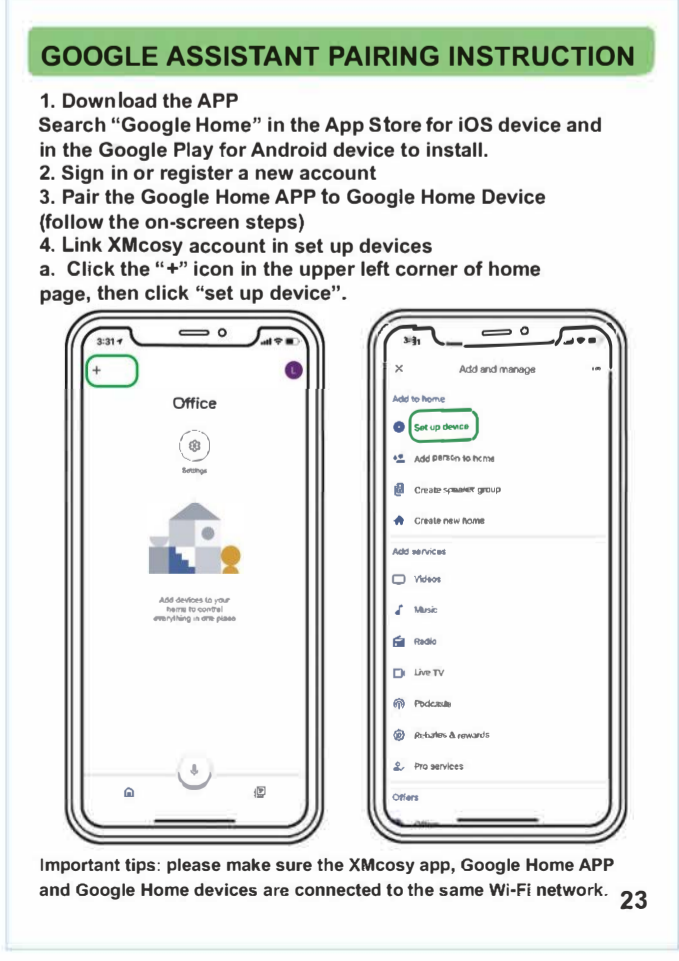
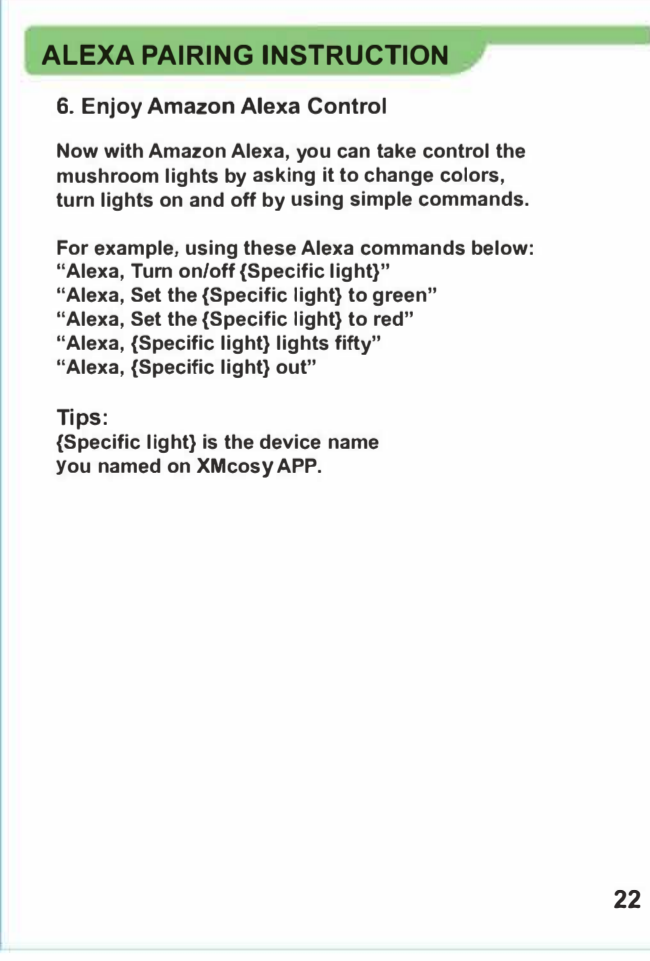
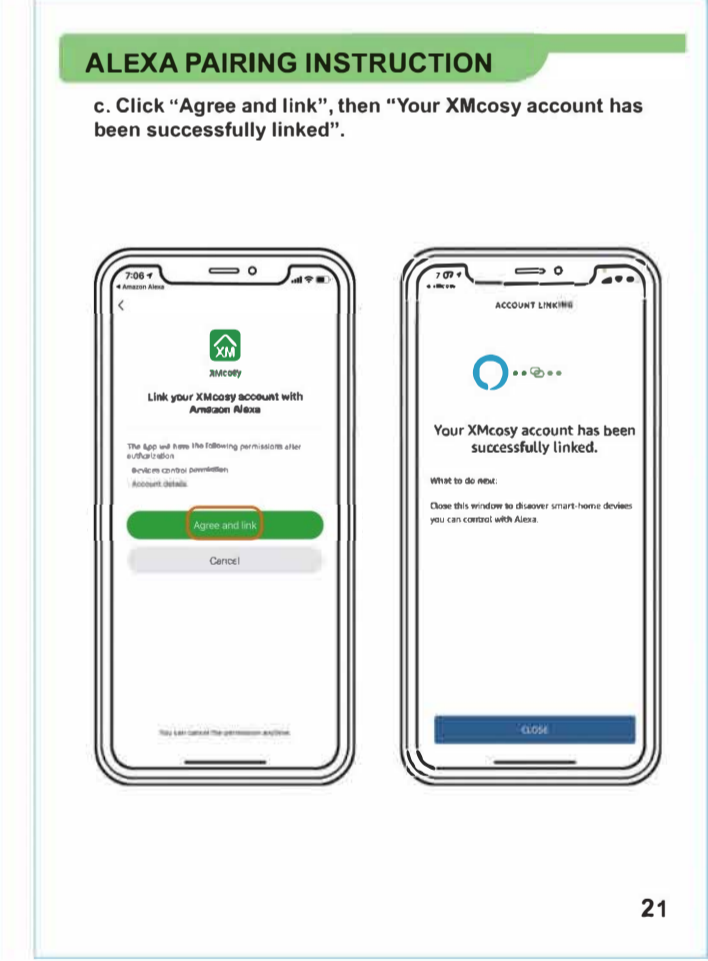
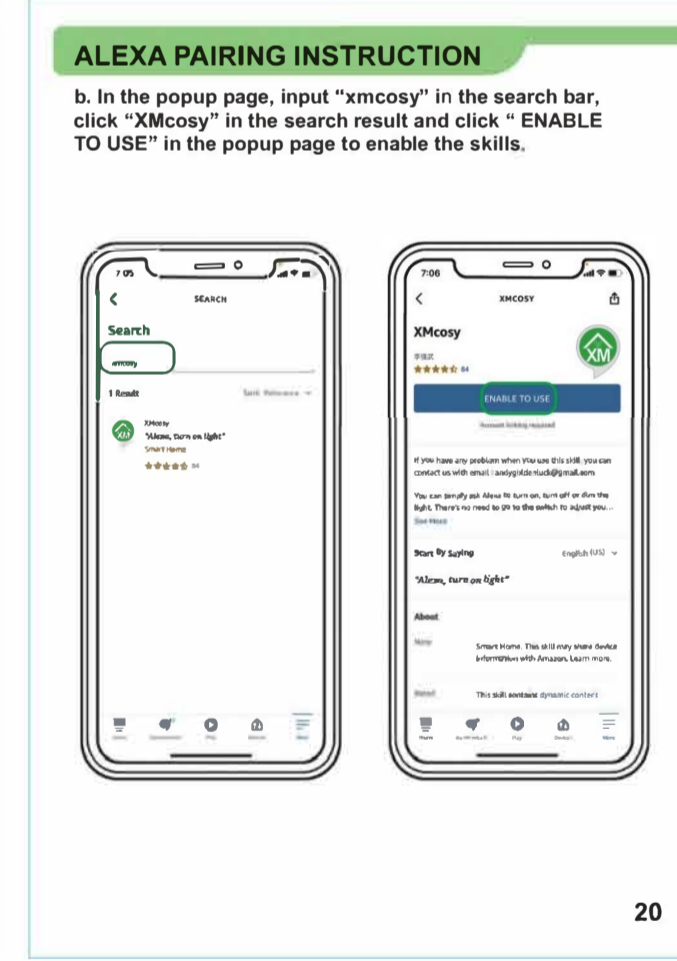
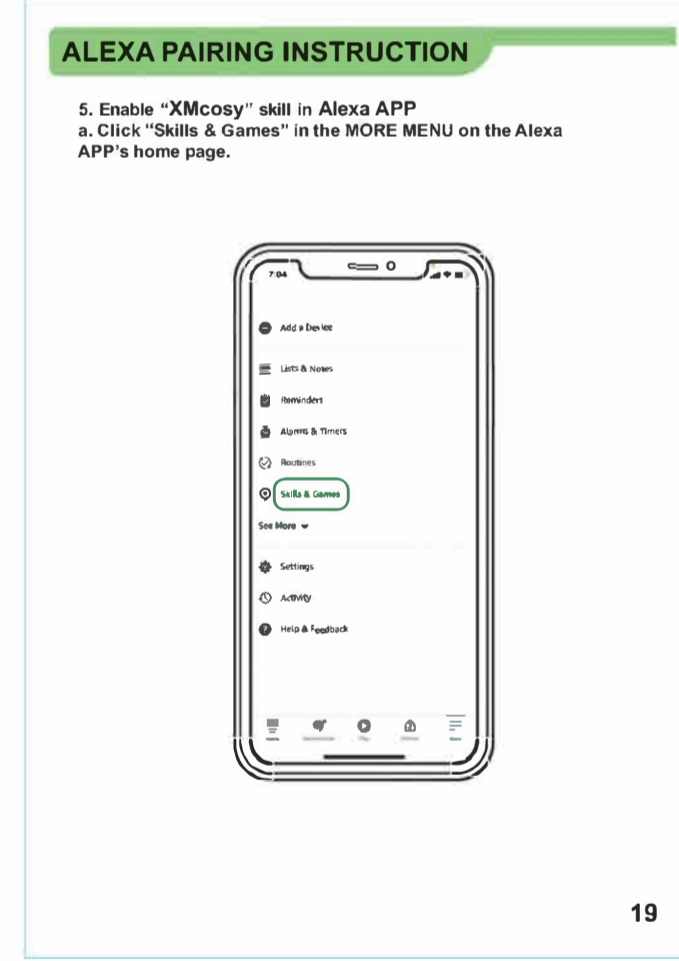
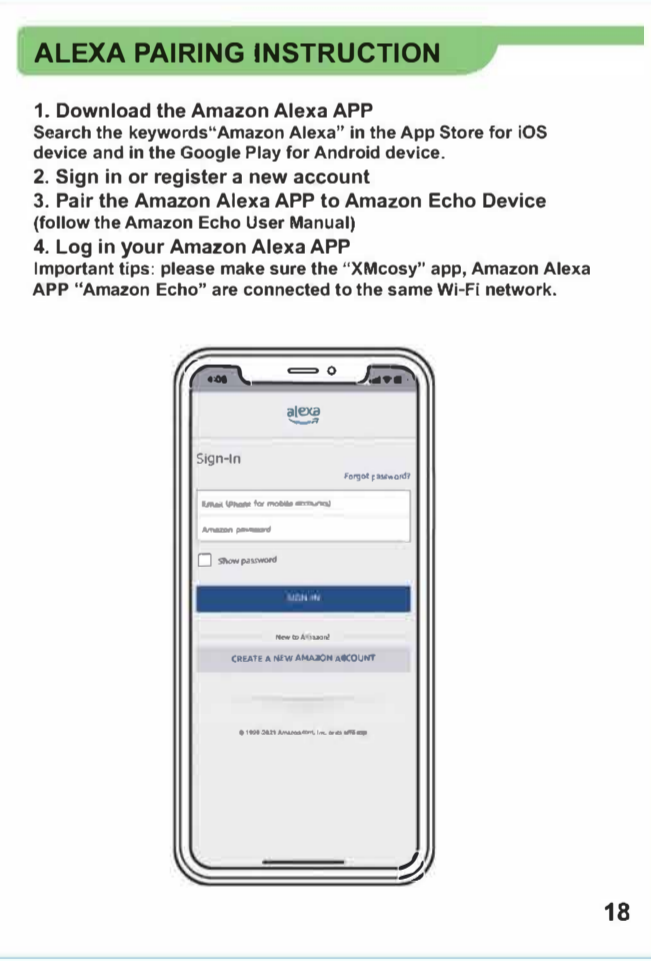
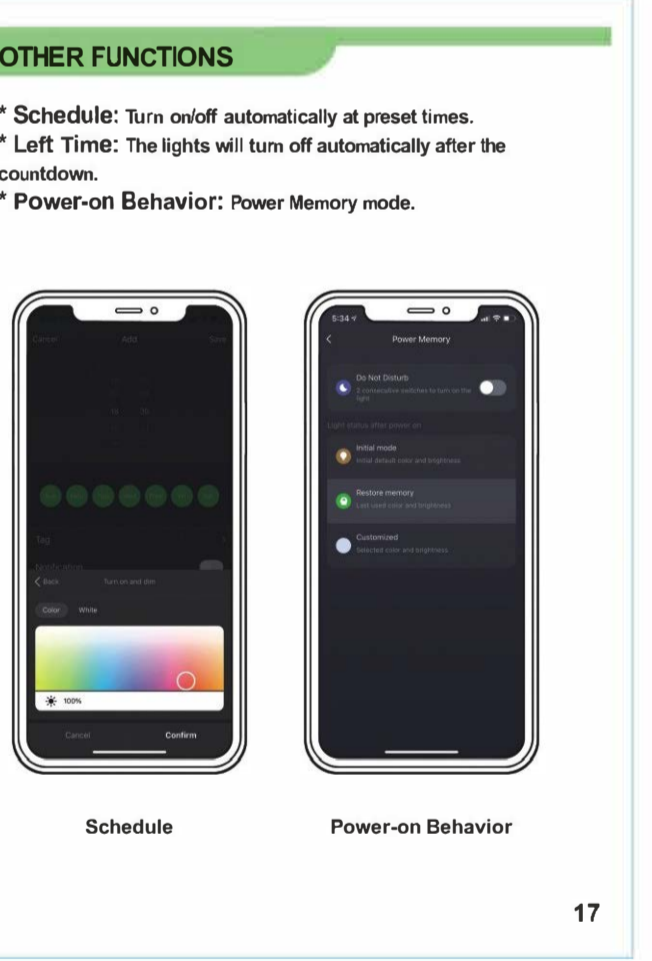
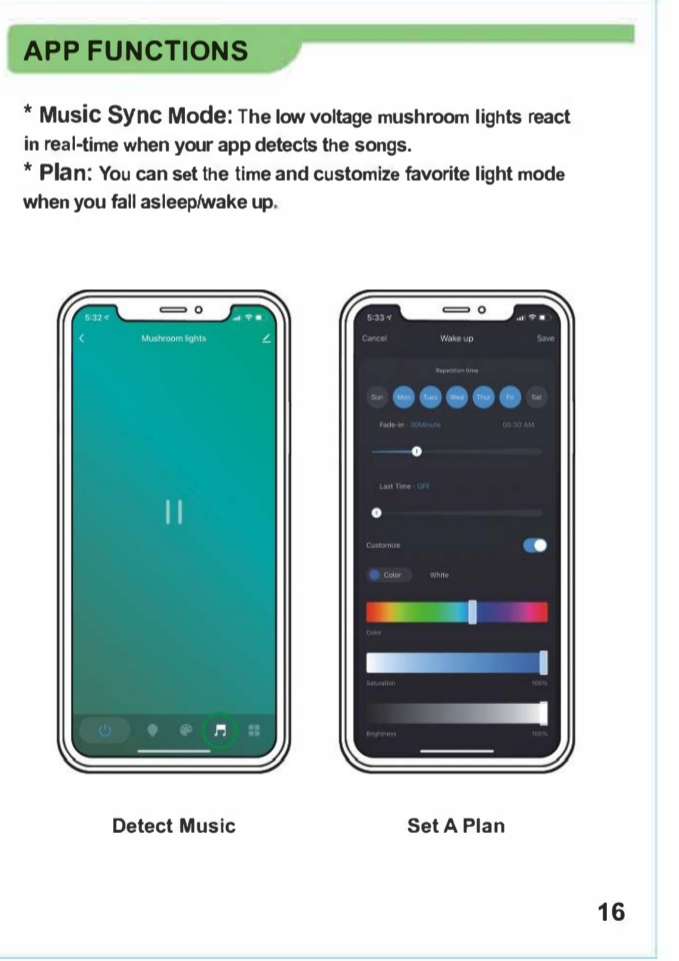
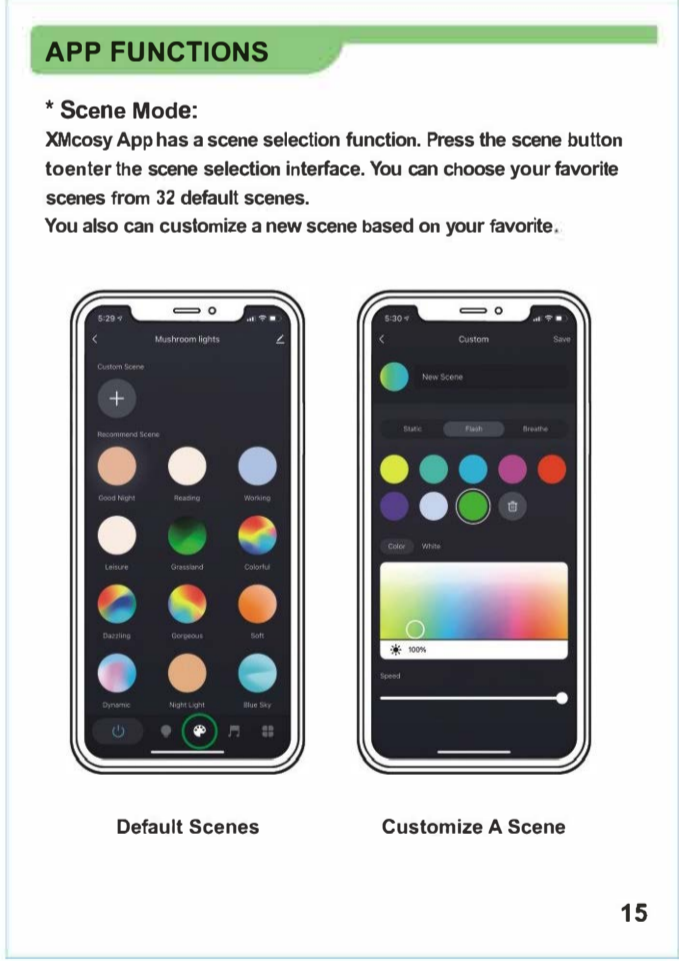
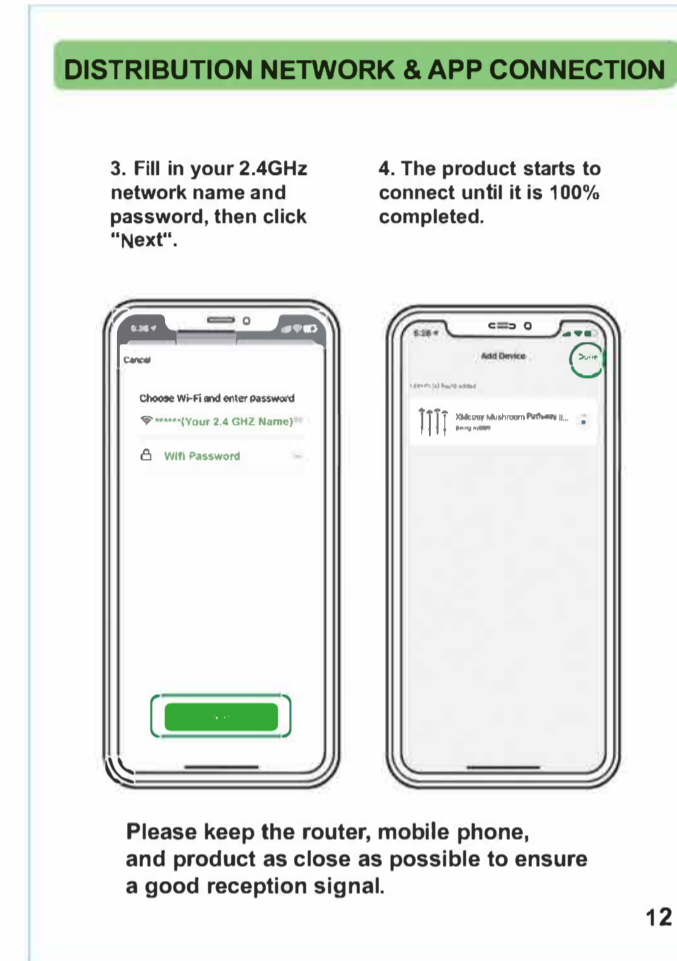
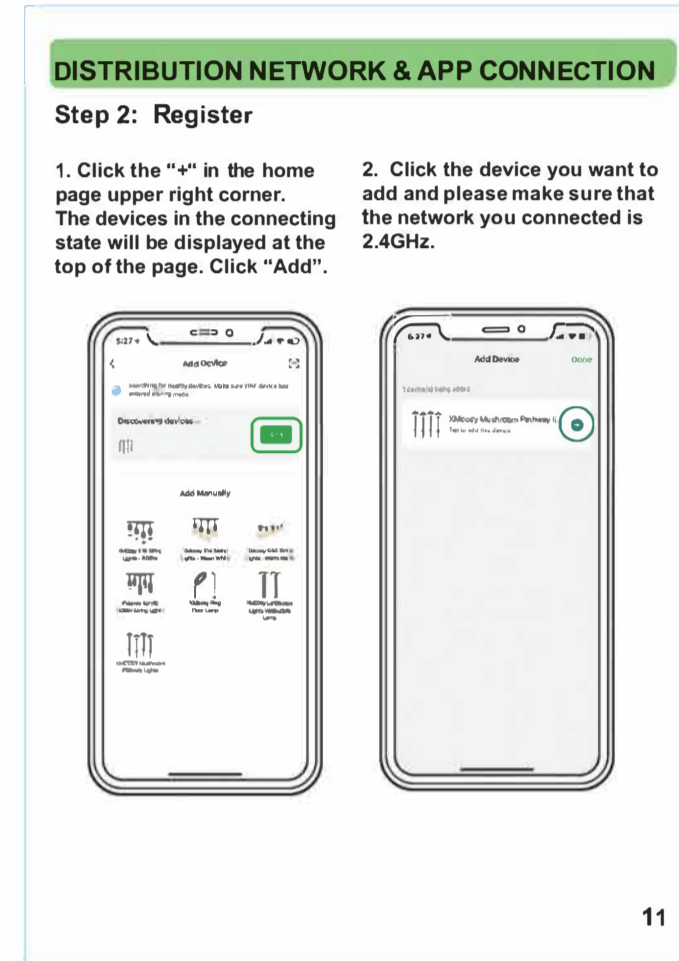
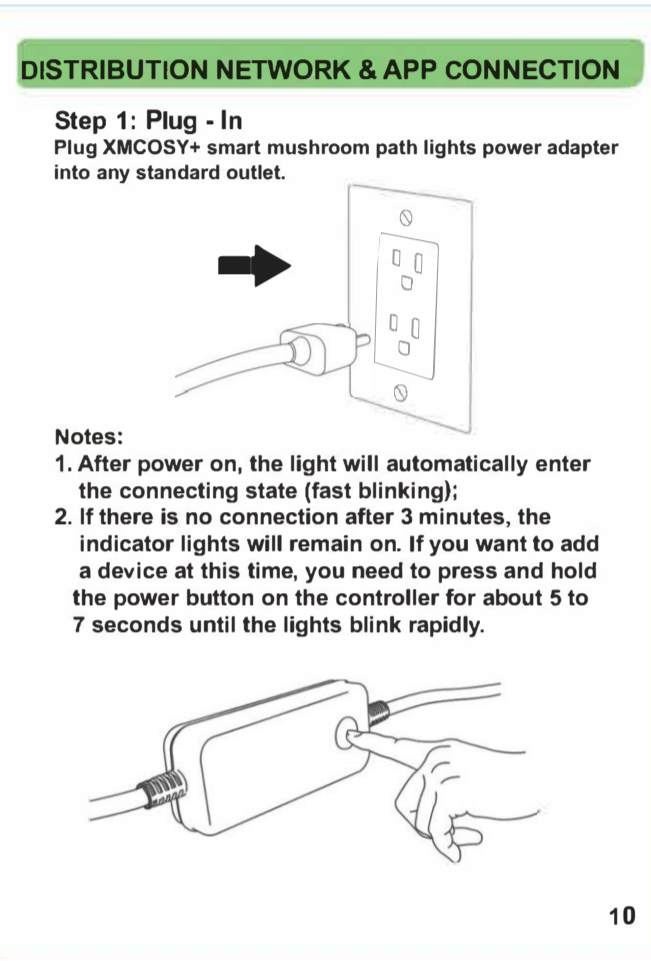
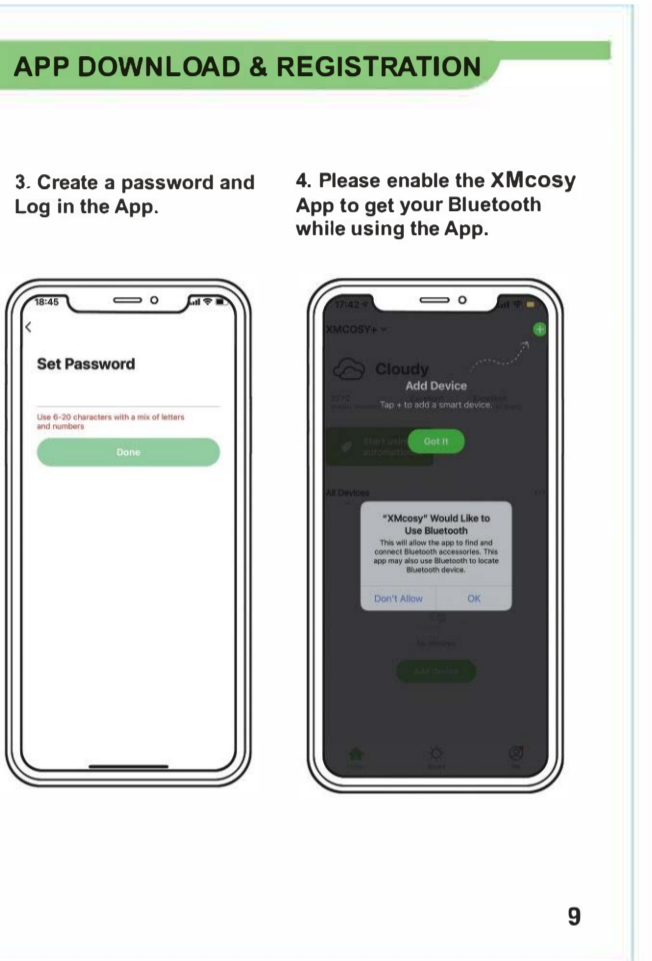
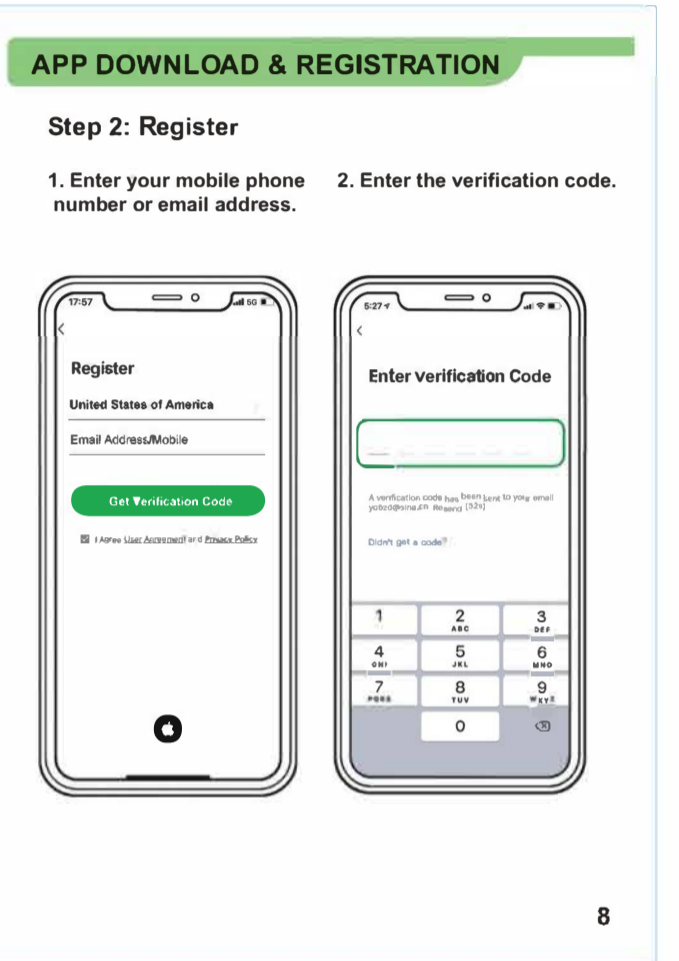
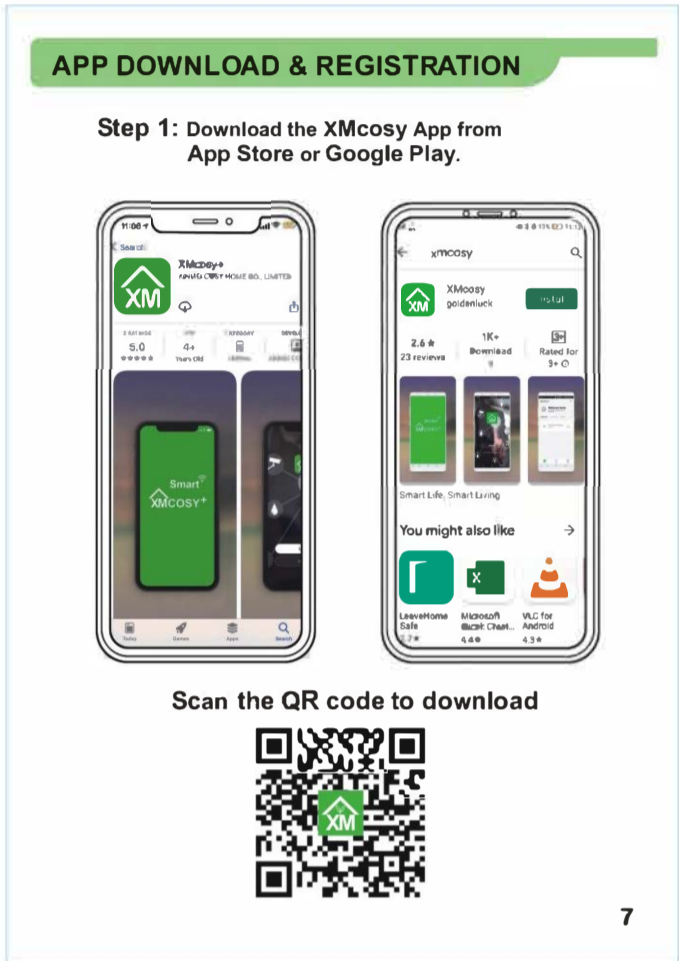
For more scene modes and functions of the product, please connect to the XMCosy APP.

**SERVICE & WARRANTY**

Thank you for your support of XMCOSY+! XMCOSY+ provides a regular 1-Year Warranty.

Not Satisfied?  
If there is any problem with our product while using, Please Contact [service.2@xmcosy.com](mailto:service.2@xmcosy.com)

Satisfied?  
We are glad that you didn't encounter any problems with our low voltage mushroom lights. XMCOSY+ is committed to providing better products and service, so we provide an additional 1-year warranty. Please Email to register a 2-YEAR-WARRANTY [warranty@xmcosy.com](mailto:warranty@xmcosy.com) or scan the QR code



**TROUBLESHOOTING**

Question	Solutions
1. Why the colors of lights are different or can't respond to the APP?	The cables are connected incorrectly. Please check all connectors and connect them by aligning the point. (include the connection to the power controller)
2. Could the power adapter hold more than 6 lights?	No. The power adapter is 36W max and only can hold 6 lights in total. For more lights connecting, please contact XMCOSY+ Customer Service Team [service.2@xmcosy.com]
3. The lights can't connect to the APP.	1. Please update the APP to the newest version. 2. Please turn on Bluetooth, 2.4GHz Wi-Fi, mobile data, and locations when connecting the devices. 3. Please try to connect the phone with a hotspot rather than Wi-Fi to see whether it's the problem with Wi-Fi. 4. If the routing security level is very high or incompatible with the APP, it will cause the problem of can't connecting to the APP. Please lower the security level of your router to make it compatible with XMCosy APP. Or send us your router model for further solutions. The wall penetration capability of 5.0GHz is weaker than 2.4GHz, which means that the outdoor signal of 5.0GHz is worse than 2.4GHz. Therefore, most smart devices support 2.4GHz networks or dual-frequency networks of 2.4GHz and 5.0GHz. You can log in to the management page of your router and change the SSIDs of the 2.4 GHz and 5 GHz networks to differentiate them.
4. Home network is 5GHz.	

**CONTACT**

For questions, assistance, or support, Please Contact:  
[service.2@xmcosy.com](mailto:service.2@xmcosy.com) or scan to email

\* Required Information  
1. Amazon Order ID  
2. Product Model NO.  
XMCOSY+ Customer Service Team will reply within 24 hours.

For more info, or news about XMCOSY+, pls follow XMCOSY+ social website.

@XMCOSY+ @XMCOSY+ @xmcosy

**WE CAN HELP!**

YOU DON'T NEED TO RETURN IT TO AMAZON WE WILL PROVIDE YOU WITH A 100% SATISFIED SOLUTION

**XMCOSY+ Customer Service**  
[service.2@xmcosy.com](mailto:service.2@xmcosy.com)

Lighting Expert, Brighten up Your Life

**Lighting Expert, Brighten up Your Life**