

If there is any problem with our product while using



YOU DON'T NEED TO RETURN IT TO AMAZON
WE WILL PROVIDE YOU A 100% SATISFIED SOLUTION

XMCOSY+ Customer Service
support@xmc cosy.com



Lighting Expert, Brighten up Your Life

Use & Maintenance Tips

- Before installing, plug the string lights into an outlet to ensure all bulbs work properly.
- Before hanging, please successfully connect the string lights with XMCOSY+ App.
- When hanging the string lights, please keep the black cable slack and avoid excessive tension to pull the signal wire inside broken, which may affect the normal operation of the light.
- If some bulbs are not working properly, please check if the black cable is twisted, hooked, or tightly pulled. And manually adjust the black wire near the defective bulb.
- The connect method is from the 10th page of this manual. If the Connection or App is abnormal, please see the last page for troubleshooting.

Please feel free to contact our Customer Service Team with any product or usage questions.

support@xmc cosy.com
or scan the QR code



Smart RGBW String Lights User Manual



Download Free APP:



Can't connect? Need help?

[Email:support@xmc cosy.com](mailto:support@xmc cosy.com)

Warranty Policy

First, thank you for your support of XMCOSY+.
We provide a regular 1-year warranty.

XMCOSY+ is committed to
providing better products and services,
so we provide an additional 1-year warranty.

Email to register a
2-YEAR-WARRANTY

warranty@xmc cosy.com
or scan the QR code



SAFETY INFORMATION

IMPORTANT: READ ALL THE SAFETY INFORMATION AND INSTALLATION INSTRUCTIONS BEFORE INSTALLING OR SERVICING THIS PRODUCT. KEEP THIS MANUAL FOR REFERENCE.

Warning:

RISK OF ELECTRIC SHOCK

- Sockets used to power smart string lights should comply with all national and local electrical codes. If you are unsure of compliance requirements, please consult your local electrician.
- Do not operate the bulbs without tightening string lights, making sure to unplug the smart string lights during installation to avoid damage to the power cord and lamp assembly during installation.
- Do not submerge when using on GFCI protection circuits.
- Do not use in water. Do not use extension cords or places where water may accumulate near water. Take care to keep the bulb at least 16 feet from the surface of the water. Keep the plug and socket dry.
- Do not install the smart light string in a position where you can step on it. Not be allowed for children to play smart string lights, should be installed out of reach of children.
- ETL recommends testing GFCI circuits and outlets monthly to ensure proper operation.
- Regularly check the smart string lights for physical damage or other damage caused by outdoor exposure to components, and replace any damaged smart string lights components in time.

RISK OF FIRES

Smart String Lights are designed to be mounted with their individual keyhole mounting feature.

Do not mount Smart String Lights by using the main electrical cord or the individual drop cords.

Smart String Lights are designed to have limited linkability by using their electrical plugs and receptacles.

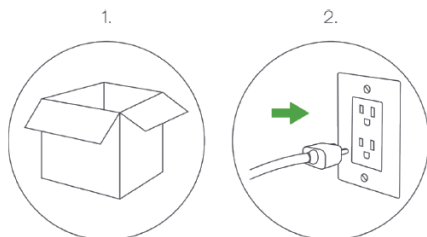
Do not mount Smart String Lights in any position where the bulb is facing up. Do not allow the LED lamp assemblies to be in contact with combustible materials.

Specifications:

(There are two specifications of 49FT or 98FT respectively.)

Overall Length: 49 FT/98 FT
Number of Sockets: 15/30
Bulbs Included: 15/30
Input Volts: 110-250 V AC
Output Volts: 12 V DC
Rated Wattage: 7.5 W/15 W
Max Wattage: 24 W
Bulb Wattage(each): 0.5 W
Cord Color: Black
Bulb Color: Warm White+RGB

Step 1: Initial Setup



1. Carefully unpack Smart String Lights from the package.
2. Before installing, plug the Smart String Lights into an outlet to ensure all lights work properly.
3. Before hanging up, please test to confirm the Smart String Lights can be connected to the XMcosy+ App.

IMPORTANT: Please Unplug the Smart String Lights prior to mounting

LED lamp assemblies should hang freely and not be susceptible to repetitive damage caused by environmental conditions such as wind, rain, and ice. Not intended for installation in ceilings, soffits, cabinets, attics, or other enclosed spaces.

CAUTION: Suitable for outdoor /indoor use only.

DO NOT IMMERSE IN WATER. DO NOT EXCEED RATED CAPACITY.

Thank you for purchasing XMcosy+ Smart String Lights

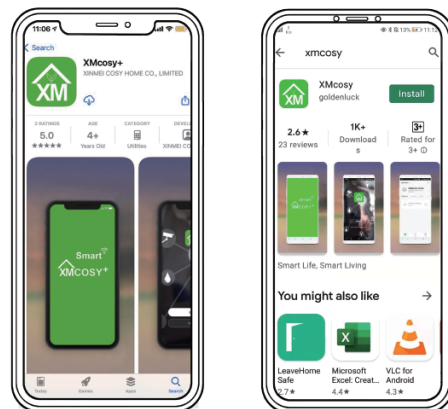
XMcosy+ Smart String Lights are perfect for any occasion! Control the lights with Alexa, Google Assistant or customize them with any WiFi-enabled smartphone/tablet by XMcosy App (available from Android and iOS). The XMcosy App allows you to control the smart string lights throughout your entire house, indoors or outdoors at the touch of a button. Turn your lights on and off anywhere!

Inside the package you'll find:



Step 2: Download App

Download the XMcosy App from App Store or Google Play

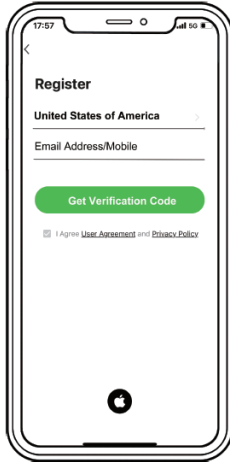


Scan the QR code to download

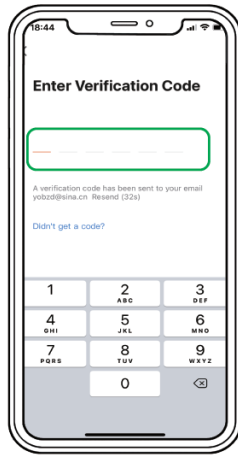


Step 3: Register

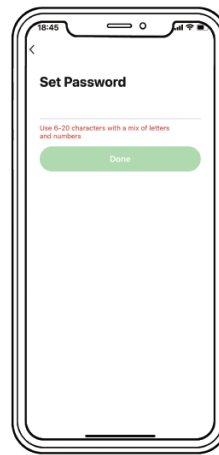
1. Enter your mobile phone number or email address.



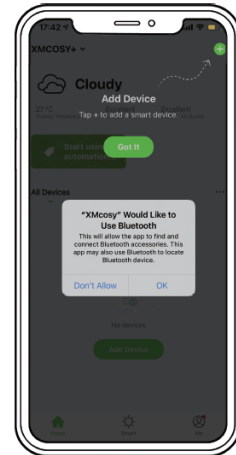
2. Enter the verification code and create a password.



3. Create a password and Log in the App.

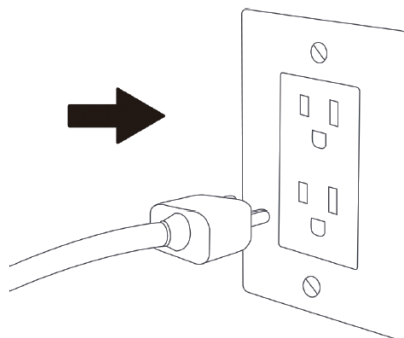


4. Please enable the XMcosy+ App to get your Bluetooth while using the App.



Step 4: Plug - In

Plug XMCOZY+ Smart String Lights into any standard outlet



Notes:

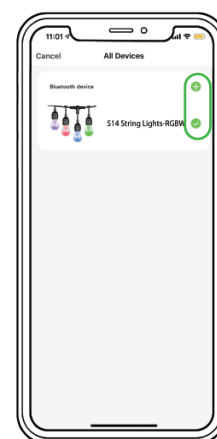
1. After power on, the light bulbs will automatically enter the connecting state (fast blinking);
2. If there is no connection after 3 minutes, the indicator lights will remain on. If you want to add a device at this time, you need to press and hold the power button on the controller for about 5 to 7 seconds until the lights blink rapidly.

Step5: Add Device ----AUTO Mode

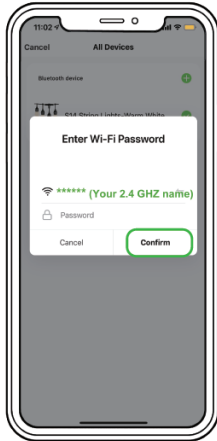
1. Select "Add Device" or click the "+" in the upper right corner.



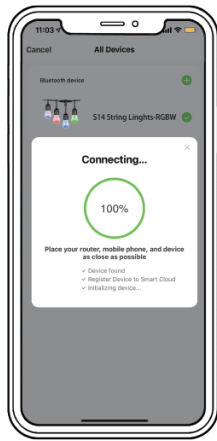
2. The devices in the connecting state will be displayed at the bottom of the page. Click the device you want to add and please make sure that the network you connected is 2.4GHz.



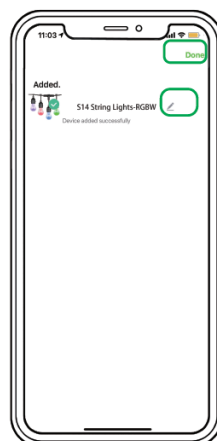
3. Fill in your 2.4GHz Wi-Fi name and password, then click "confirm".



4. The product starts to connect until it displays 100% complete.

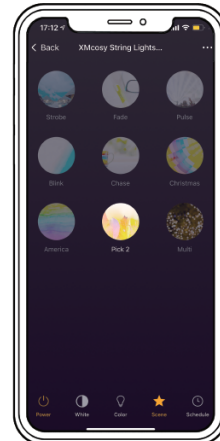


5. After you edit the product name and save it, click "DONE" at the top right.



Congratulation!

Now you can use XMcosy App to control your string lights



Please keep the router, mobile phone, and product as close as possible to ensure a good reception signal.

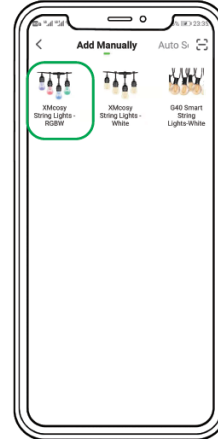
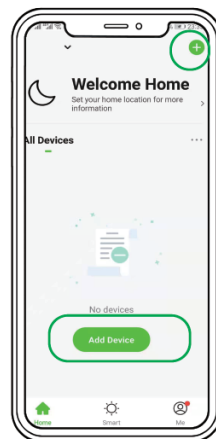
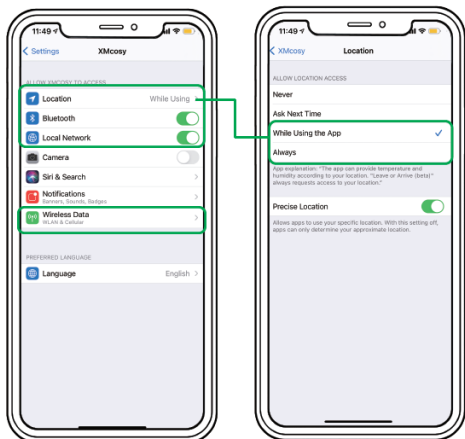
EZ Mode: If your device is not automatically discovered. You can add manually.

1. Please turn on both WLAN, Cellular or Mobile data, and Bluetooth of your smartphone. It's better to enable the XMcosy+ app to get your location while using the app. Otherwise, you need to manually enter the Wi-Fi name/SSID and password during the connection process.

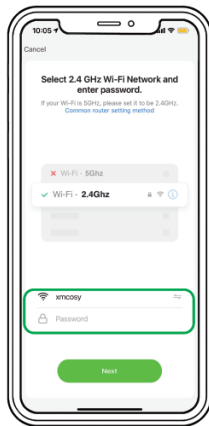
2. If you are using the iPhone, enable the Bluetooth, Local Network, and Wireless Data in "Settings--XMcosy App". Otherwise, the string lights will not be paired with your smartphone.

3. Enter the add device interface or click "+" at the top right corner of the homepage, and select the device you want to add.

4. Select "S14 String Lights-RGBW" from the devices list.



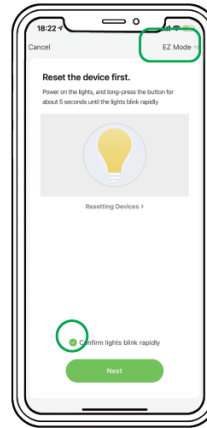
5. Follow the prompts on the interface to fill in your 2.4GHz Wi-Fi name and password, and click "Next".



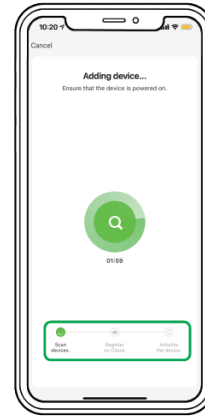
6. Long-press the power button on the controller for about 5 to 7 seconds, until the string lights blink rapidly.



7. Under EZ Mode, make sure the lights blink rapidly, and click "Confirm lights blink rapidly".



8. The device enters the state of connecting and distributing the network, then wait for the completion of adding the device.



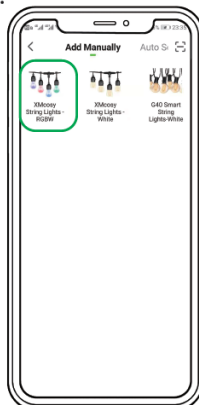
Having difficulty pairing the string lights with EZ Mode? You could try the "AP Mode"

AP Mode: If you cannot add a device with EZ Mode, or you are not sure whether the network is 2.4GHz, please try "AP Mode"(Some devices need to turn off Bluetooth to activate AP mode.)

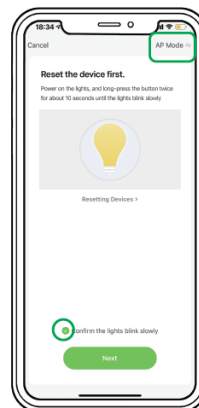
1. Long-press the power button on the controller for about 5-7 seconds until the lights blink rapidly.
2. Under the blinking state, long-press the power button for about 5-7 seconds until the lights turn to slow blinking once per second. If they still blink rapidly, repeats this step until they blink slowly.



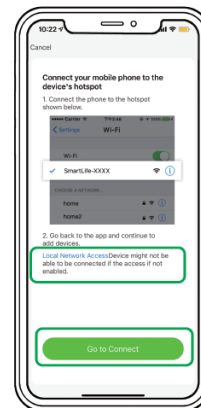
3. Under the slow blinking state, enter the "add device" interface or click the "+" in the upper right corner and select the device you would like to add.



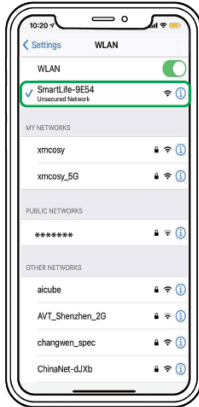
4. Please make sure that the Wi-Fi used contains the 2.4GHz frequency band, then select "AP Mode" on the upper right corner, and click "confirm the lights blink slowly".



5. Follow the instructions on the page to connect the device hotspot. Click "Local Network Access" and make sure the Local Network is enabled.



6. Select the hotspot "SamrtLife-XXXX" in the available network to connect. Please confirm that the hotspot network is connected successfully, then go back to the App to start the connection.

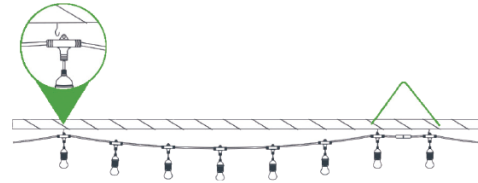


7. The device enters the state of connecting and distributing the network! After the product is initialized, you can use XMcosy + App to control the string lights.

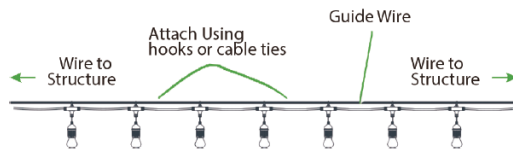


Step 6: Installing

Please confirm that each light bulb can work normally and XMcosy+ App can control the string lights. Then install it in the desired position.



1. When hanging the string light, it is recommended to use **s-hooks, zip ties, etc.** to hang the **ring on the top of bulbs**. Please keep the black cable slack and avoid excessive tension to pull the signal wire inside broken.



2. Or use a **guide wire**. Fix the guide wire to structure and then attach the rings above the bulbs to the guide wire by hooks, zip ties, or etc.

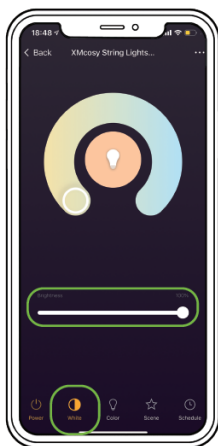
White Mode

Color Temperature

Rotate the white wheel to adjust the color temperature of the white lights from 2700k to 6000k.

Brightness

Slide the "Brightness" bar to adjust the brightness of the string lights, then you can freely brighten or dim the lights.



Color Changing Mode

Color Wheel

Rotate the color wheel to adjust the color of the lights from a broad spectrum of colors.

Default Color

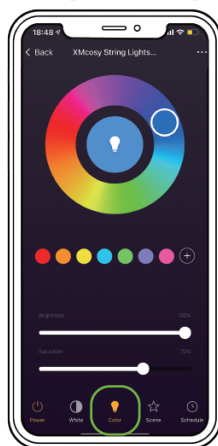
Or click the round color icons to choose a default color. You can also click the "+" to add a default color.

Color Temperature

Slide the "Saturation" bar to adjust the color temperature of the string lights from cool to white.

Brightness

Slide the "brightness" bar to adjust the brightness of the string lights, then you can freely brighten or dim the lights.

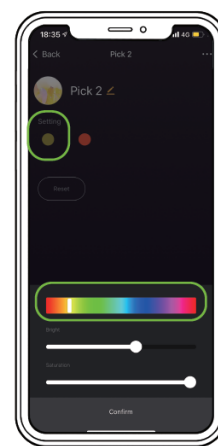
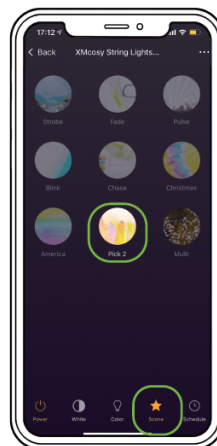


Scenes

XMcosy App has a scene selection function. Press the scene button to enter the scene selection interface. You can choose your favorite scenes from 9 default scenes.

Pick 2

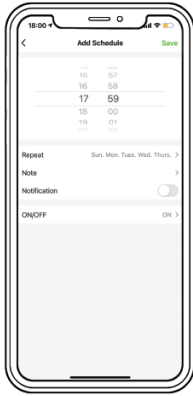
Hold the "Pick 2" button for 2 seconds to activate the customized color scene. Pick two colors and customize their brightness and saturation as you like.



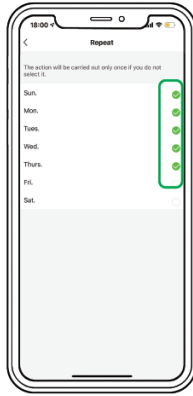
Schedule

Steps to set the time

Define whether the set time is the beginning or the end of the work



Select the time to repeat the setting within a week



TROUBLESHOOTING WAYS:

Cannot connect to your Wi-Fi network.

1. Please make sure your Wi-Fi router is under the 2.4 GHz setting, and the entered router password is correct.
2. If Wi-Fi signal is too weak, reset your Wi-Fi router and try again.
3. Please enable the XMcosy App to get your local location and Bluetooth.

Setup is not working properly.

1. Clean all apps that are running in the background then reopen the XMcosy App;
2. Uninstall and reinstall the XMcosy App then repeat the setup process.

The string lights are not responding to XMcosy App.

1. Delete the original connection record in-app and repeat the connection process.
2. Check if the string lights are turned off. If yes, turn them on and wait until lights reconnect with the Wi-Fi network automatically;
3. Check if there are problems with your internet connection. If necessary, reset your Wi-Fi router and try again.

Home network is 5GHz

The wall penetration capability of 5.0GHz is weaker than 2.4GHz, which means that the outdoor signal of 5.0GHz is worse than 2.4GHz. Therefore, most smart devices support 2.4GHz networks or dual-frequency networks of 2.4GHz and 5.0GHz.

1. If you are using a dual-band router (2.4GHz and 5GHz frequency share a Wi-Fi account.), you can connect the device using the AP mode.
2. Or you can log in to the management page of your router and change the SSIDs of the 2.4 GHz and 5 GHz networks to differentiate them.

Email: support@xmcosy.com

FCC Warning Statement

Changes or modifications not expressly approved by the party responsible for compliance could void the user's authority to operate the equipment. This equipment has been tested and found to comply with the limits for a Class B digital device, pursuant to Part 15 of the FCC Rules. These limits are designed to provide reasonable protection against harmful interference in a residential installation. This equipment generates uses and can radiate radio frequency energy and, if not installed and used in accordance with the instructions, may cause harmful interference to radio communications. However, there is no guarantee that interference will not occur in a particular installation. If this equipment does cause harmful interference to radio or television reception, which can be determined by turning the equipment off and on, the user is encouraged to try to correct the interference by one or more of the following measures:

- Reorient or relocate the receiving antenna.
- Increase the separation between the equipment and receiver.
- Connect the equipment into an outlet on a circuit different from that to which the receiver is connected.
- Consult the dealer or an experienced radio/TV technician for help.

FCC Radiation Exposure Statement

The antennas used for this transmitter must be installed to provide a separation distance of at least 20 cm from all persons and must not be co-located for operating in conjunction with any other antenna or transmitter.