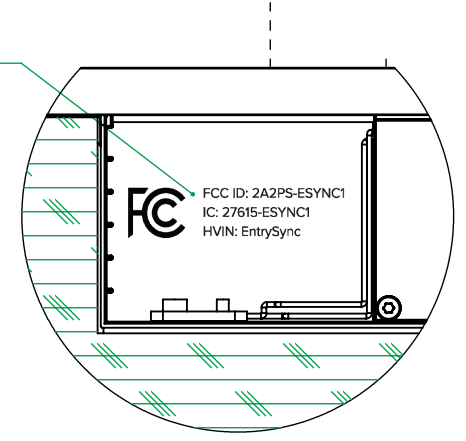


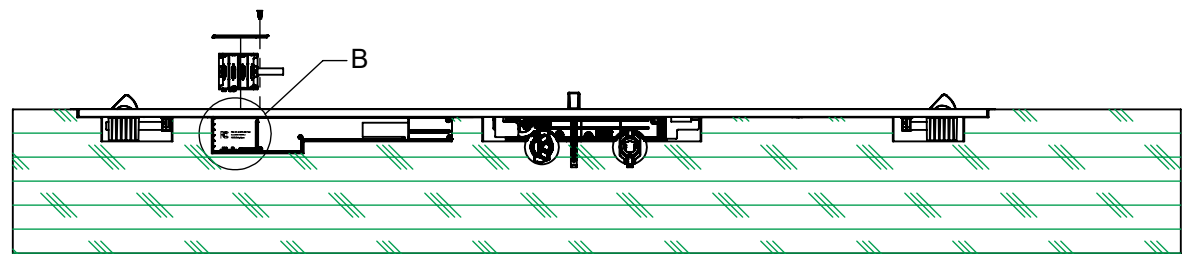
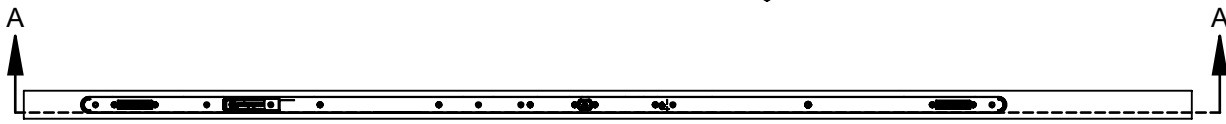
REV	DATE	REVISION DESCRIPTION

ISOMETRIC VIEW
ONCE THE LOCK IS INSTALLED IN DOOR
THE INFORMATION WILL NO LONGER BE VISABLE

LOGO AND INFORMATION
TO BE EMBOSSED INTO COMPOSITE 0.015" DEPTH



DETAIL B
SCALE 1 : 2

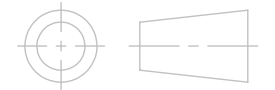


SECTION A-A
SCALE 1 : 12

**INSPECTION DIMENSIONS
ARE CIRCLED**

The information contained in this document is the confidential and proprietary information and trade secrets of Endura Products, Inc. Any disclosure, use, or dissemination of such information without the express written permission of Endura Products, Inc. is strictly prohibited. Endura Products, Inc. also owns any and all Intellectual property rights embodied in such information, including patent rights, copyrights, and trademark rights, and no license of any intellectual property rights is intended, nor shall any license be implied, as a result of the receipt of this document.

Maximum lead (Pb) content of all parts and/or coatings to be 200ppm (0.02% by weight).



MODELED BY Austin Mundy	DATE 05/26/21
CHECKED BY	DATE
RAW PART NUMBER	



8817 W. MARKET ST. COLFAX, NC 27235
PHONE: (336) 668-2472 FAX: (336) 668-4478
WWW.ENDURAPRODUCTS.COM

**ENTRYSYNC
CERTIFICATION LABEL**

TITLE	ENTRYSYNC CERTIFICATION LABEL			
DRAWING NUMBER	17018	REV	X.001	SCALE
				1:10
				SIZE
				A
				SHEET 1 OF 1

PRELIMINARY