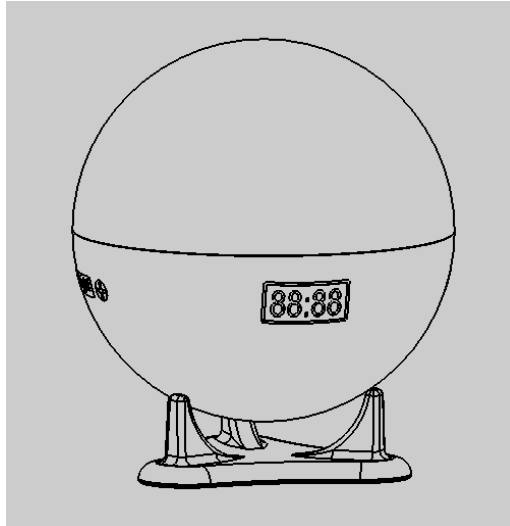
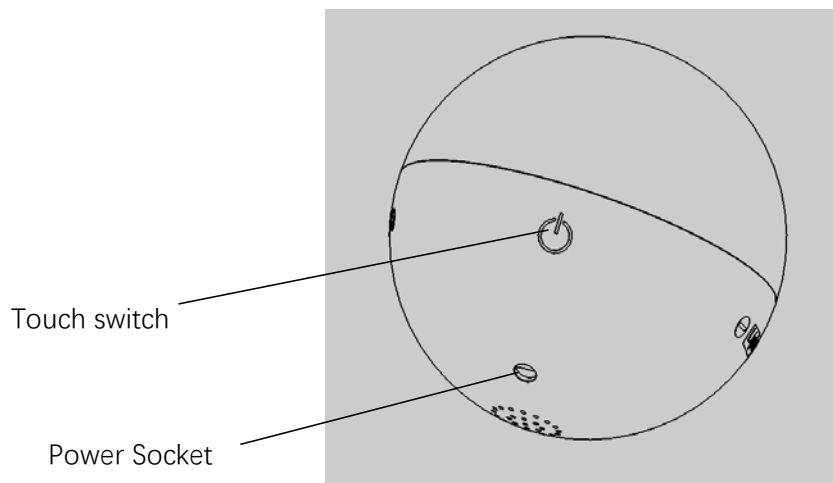


Doodle Smart Night Light



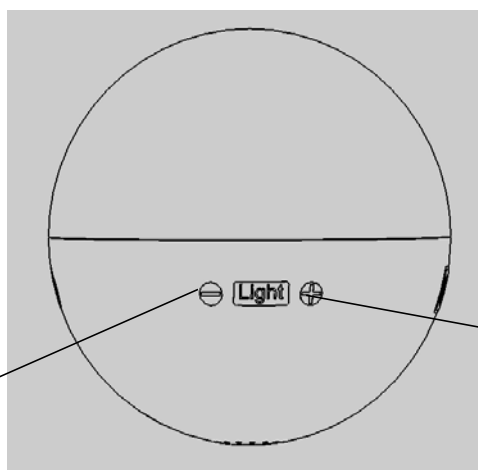
Master diagram

Touch key description



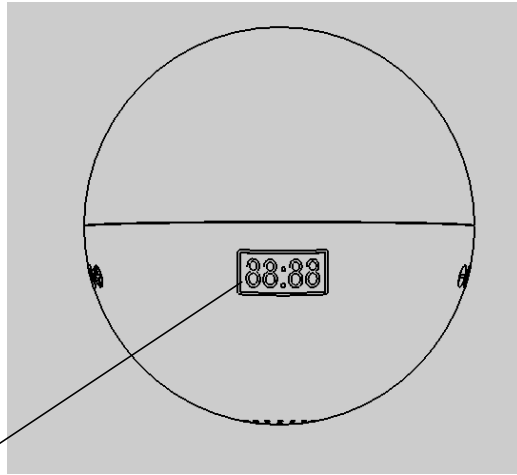
Touch switch

Power Socket

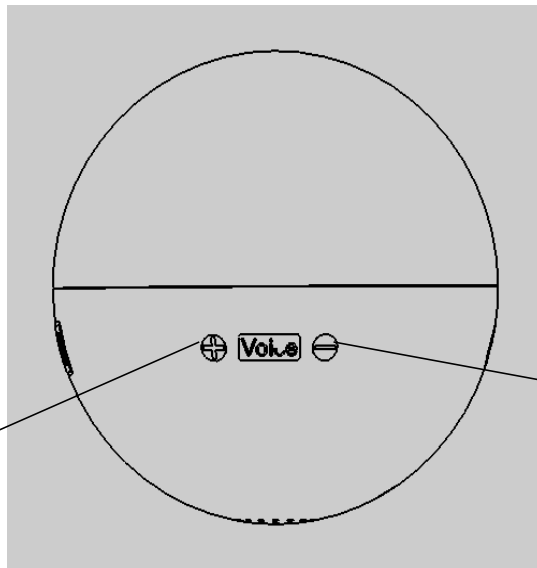


Press and hold, the brightness goes dim, and press light color to switch

Press and hold, the brightness goes brighten, and press light color to switch



After the successful connection of the equipment, the time is synchronized with the registered time
(1.reconnection is required after unplugging the power
2.Changing the WiFi network connection requires deleting the device and reconnecting)



Press and hold, the sound increases, and press the white dry sound to switch

Press and hold, the sound reduces, and press the white dry sound to switch

Product parameters

Model: HR-D1

Light color: Multicolor

Shell material: ABS material

Input power: 100-240 vac 50/60Hz 0.5A

Output Power: 5V/2A 10W□

Operating temperature: 10 °C ~ 60 °C degrees Celsius

How to use:APP

Single gross weight:450g

The main function:Alarm clock white noise nightlight

Product Size: 138mm x 138mm x157mm

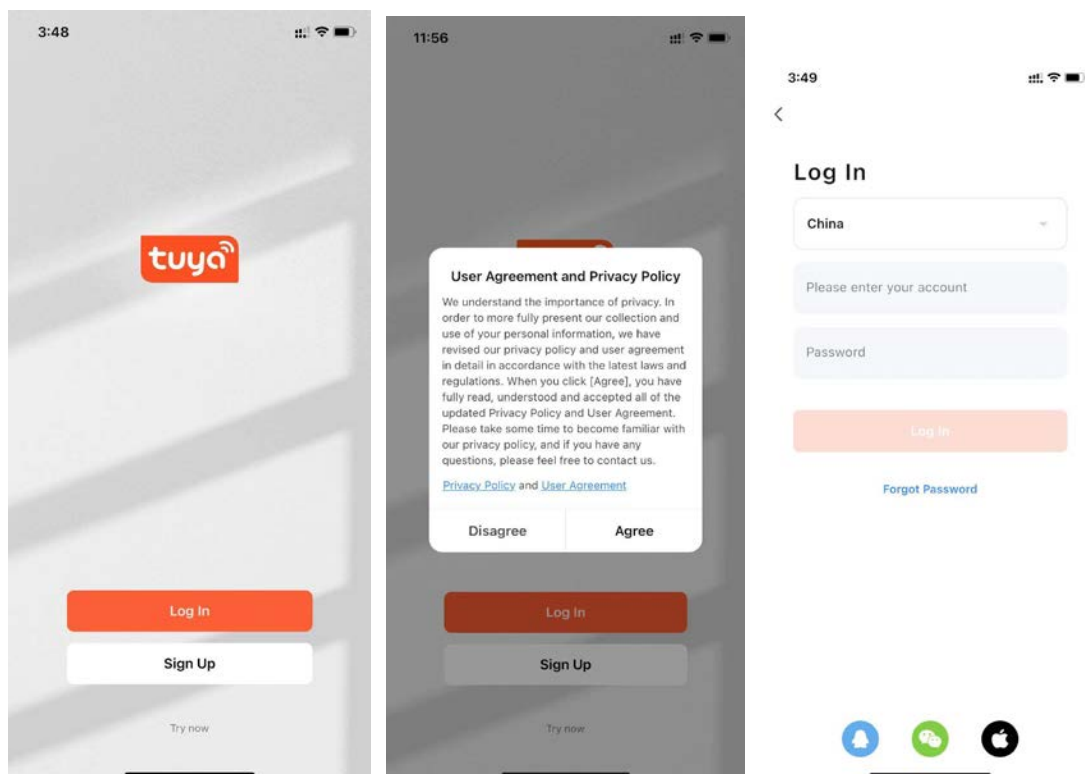
Power cord length:1M

Scan the QR code through the mobile application mall to download the APP (graffiti intelligence):



Register/log in:

Clicking "Register" will pop up the privacy policy page of Graffiti Intelligent Platform. After reading and agreeing, you will enter the account registration page. Enter the landing page after registration.



Add a device:

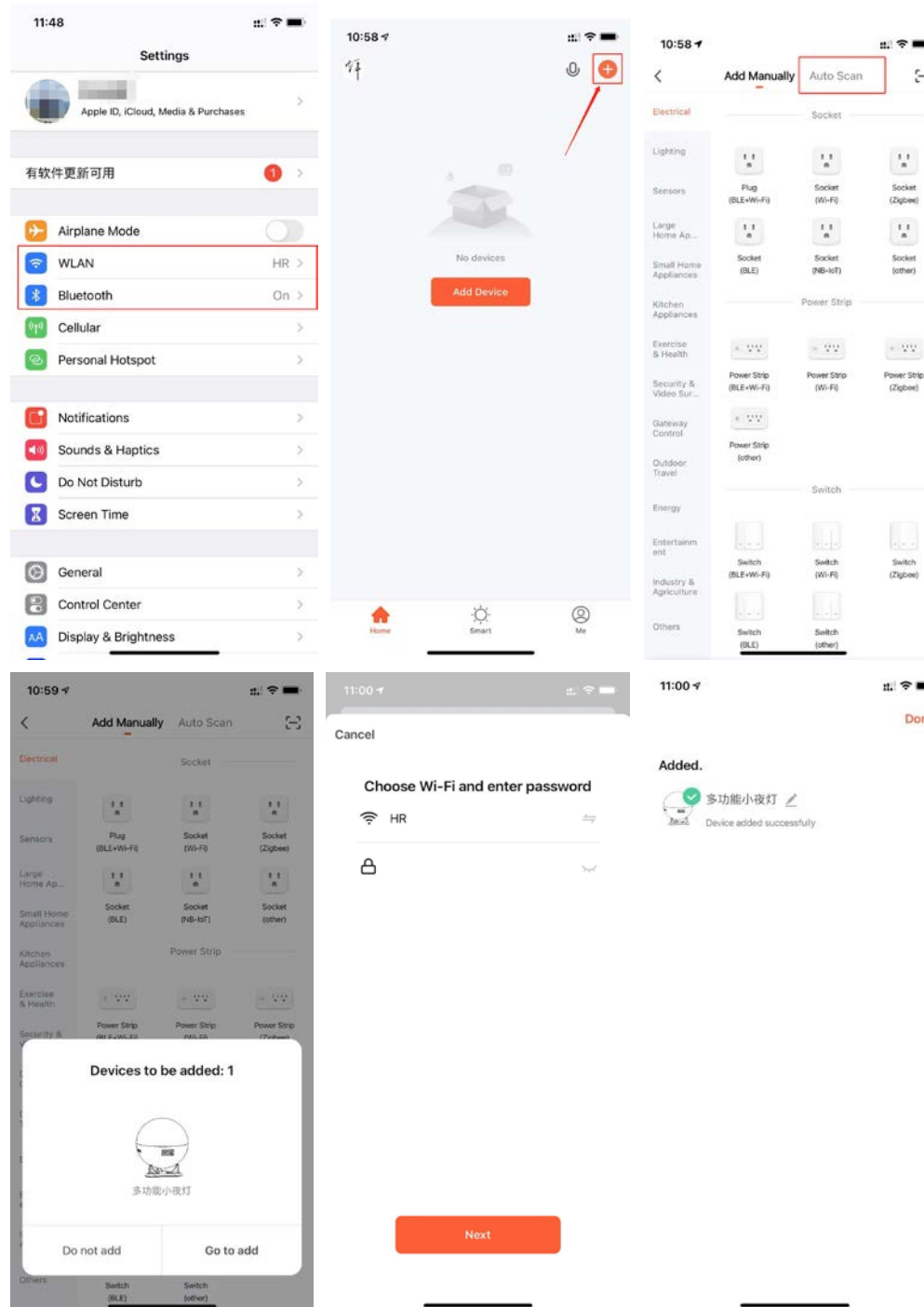
1.1 Turn on Bluetooth function and wireless network function before adding devices (as shown in Figure T-1)

1.2 Click "Add Device" in the middle of the page or "+" in the upper right corner of the home page to enter the add page. At present, it is divided into two ways: "Manual Add" and "Automatic Discovery". (The "AutoDiscover" mode needs to allow the APP to use the "Wi-Fi and Bluetooth" permissions as shown in Figure T-2 T-3 T-4) (Note: If the device cannot be searched, turn off the lights and unplug the power to turn it on again, Or press and hold

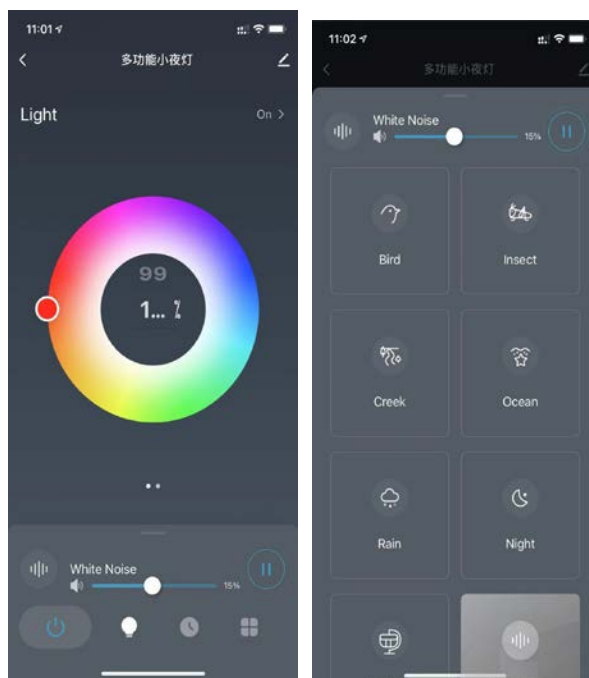
the touch switch for 3 seconds)

1.3 Add a Wi-Fi device, click Other Find Connector (Wi-Fi), and first enter the Wi-Fi password connection interface (select the Wi-Fi you are currently connected to) to enter the next step. (Figure T-5)

1.4 The device is successfully added. Click the device to enter the operation interface (as shown in Figure T-6). Note: The time after successful connection is synchronized with the time of registration place



Operation interface:



Light and white dry sound operation interface



Alarm clock adjustment interface

1. Do not disassemble the product under any circumstances. There are no repairable parts inside the product
2. Make sure your local power outlet matches the voltage required for your device (USB DC 5V/2A)
3. Do not operate this product when the power cord has been worn or broken
4. This product should be kept away from heat sources, such as radiators, heat registers, stoves or other electrical appliances that generate heat.

FCC WARNING

This device complies with part 15 of the FCC Rules. Operation is subject to the following two conditions: (1) this device may not cause harmful interference, and (2) this device must accept any interference received, including interference that may cause undesired operation.

Any changes or modifications not expressly approved by the party responsible for compliance could void the user's authority to operate the equipment.

NOTE: This equipment has been tested and found to comply with the limits for a Class B digital device, pursuant to Part 15 of the FCC Rules. These limits are designed to provide reasonable protection against harmful interference in a residential installation. This equipment generates, uses and can radiate radio frequency energy and, if not installed and used in accordance with the instructions, may cause harmful interference to radio communications.

However, there is no guarantee that interference will not occur in a particular installation.

If this equipment does cause harmful interference to radio or television reception, which can be determined by turning the equipment off and on, the user is encouraged to try to correct the interference by one or more of the following measures:

- Reorient or relocate the receiving antenna.
- Increase the separation between the equipment and receiver.
- Connect the equipment into an outlet on a circuit different from that to which the receiver is connected.
- Consult the dealer or an experienced radio/TV technician for help.

To maintain compliance with FCC's RF Exposure guidelines, This equipment should be installed and operated with minimum 20cm distance between the radiator and your body: Use only the supplied antenna.