

封面

100.00 mm

## USER MANUAL WIRELESS CHARGER

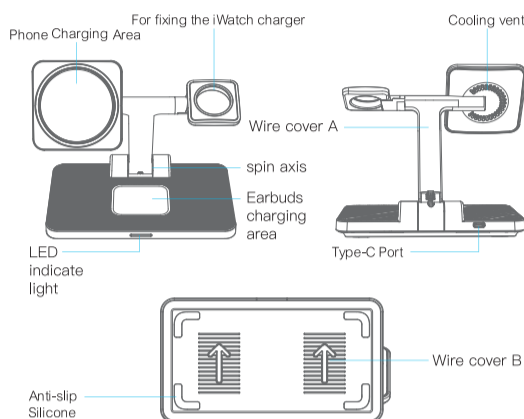


**Note:**  
In order to make sure charging 3 devices safely and efficiently, you must use 9V/2A adapter (Qualcomm Quick Charger 2.0 or 3.0) and quick charge cable (if not use the appropriate adapter and quick charge cable, the charger may not charge phone or may not charge 3 devices simultaneously or may even damage the charger).

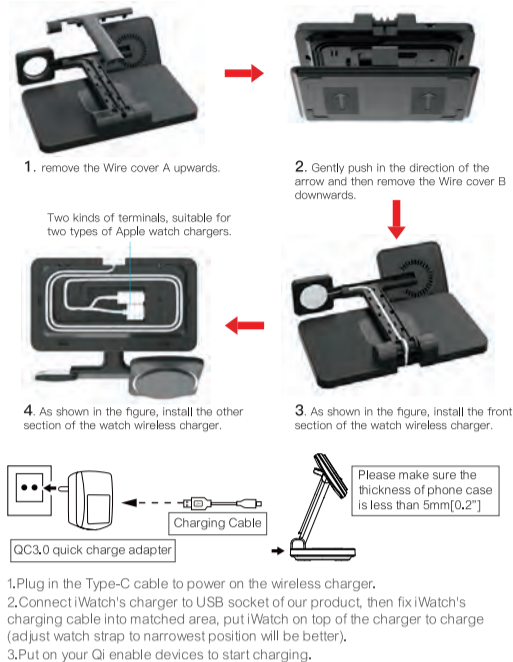
### PRODUCT INTRODUCTION

The Wireless Charger is multi function charging station, you can charge 3 smart devices (iPhone 12/13/14 series, iWatch and earbuds) on our product at the same time. It is compatible with iPhone 12/13/14 series, iWatch, AirPods, and most of TWS. It is unique design with elegant appearance, and perfect to use at office or at home. It is very convenient to charge your smart devices on our product especially for Apple user. There is protection of over-charge and FOD function, you can enjoy your charging experience.

### PRODUCT APPEARANCE



### HOW TO USE



### LED LIGHT INSTRUCTIONS

Power on	●	Orange light
Standby mode	●●	The orange light will turn on for three seconds and then turn off.
Charging	●●●	The orange light will turn on for three seconds and then turn off (mobile phone), and the indicator light of the charging device will not turn when removed; Recharging, the charging indicator light will light up normally.
Fully charged	●	No light display (mobile phone).
FOD	●●	The orange light flashes and returns to normal after the fault is resolved.

### APPLICABLE DEVICES

#### 1. iPhone

iPhone 14, 14 Plus, 14 Pro, 14 Pro Max / iPhone 14 Series Case with MagSafe  
 iPhone 13, 13 Pro, 13 Pro Max, 13 mini / iPhone 13 Series Case with MagSafe  
 iPhone 12, 12 Pro, 12 Pro Max, 12 mini / iPhone 12 Series Case with MagSafe  
 iPhone Leather Wallet with Magnetic

#### 2. Apple watch

Apple Watch Series 8 / Series 7 / Series 6 / Series 5 / Series 4 / Series 3 / Series 2 / SE

#### 3. Earbuds

AirPods (2nd generation) / AirPods Pro / AirPods (3rd generation)  
 The others Qi enable earbuds

### PRODUCT SPECIFICATION

Input: 9V/2A (Minimum)  
 Output (Phone): 15W/10W/7.5W/5W  
 Output (iWatch): 2.5W  
 Output (Earbuds): 3W  
 Input Socket: Type-C  
 Transmission Distance (Phone): Within 8mm  
 Product Size: 160x140.5x61mm (fold)

### PACKING LIST

1 X Wireless Charger  
 1 X Type-C Quick charge cable  
 1 X User Manual  
 1 X QC3.0 Adapter

### FAQ

1. If you're experiencing interrupted or slow charging, check the following:
  - (1) The back of your phone should not have any metal, pop sockets, or credit cards.
  - (2) Put the phone in the center of the charging surface (this lets the charging coil in your phone lineup with the one inside the wireless charger).
  - (3) Phone cases should be no thicker than 5 mm for effective charging.
  - (4) Check whether the adapter is QC3.0 fast charger.
2. If you're failing to charge your device, please try out the following:
  - (1) Please restart your cell phone and test with other Type-C charging cable.
  - (2) Please check whether the indicator turns on or not.
  - (3) Please check the Adapter is QC3.0 Quick Charger (Output: 9V/2A) or not, iPhone original adapter does not match the wireless charger.
  - (4) Please check your Phone case thickness (<=5mm). Metal ring or Magnetic Pad will not be available.
3. If you're using the recommended wireless charger with the QC3.0 Adapter and have removed any potential charging obstructions, but are still experiencing issues, try:
  - (1) Replacing the cable connecting your wireless charger.
  - (2) Rebooting your phone.
  - (3) Unplug the adapter and reinsert.
4. Charging is still slow.
 

The mobile phone itself or the external receiving coil allows the wireless charging current to be different, or the application running consumes a lot of power when the mobile phone is charging. It is recommended to reduce or close the application.

5. The phone is charging intermittently, or the indicator light flashes.
 

If the charging current is not enough, please use a adapter with sufficient power 9V/2A above.
6. Charging fever.
 

It is normal for the receiving coil or transmitter board to generate heat during wireless charging. If the wireless charger is too hot, please take your phone off it, when the wireless charger is cooled down, please charge it again.
7. The charger does not work.
 

Do not put metal debris or magnetic cards on the charging area. If the product does not work due to overheating, please take off the phone and charge it again when it is cooled down.
8. If there are another problems, please contact our after-sales for solution.

### WARNING

1. Avoid using the product at places that are wet, humid or have high temperature.
2. Avoid dropping the product from high places.
3. Do not disassemble the product by yourselves. Please contact us if necessary.
4. Do not clean the product unless the unit is powered off.
5. It is recommended to use 18W or above adapter to charge 3 smart devices at the same time.

All products brands and trademarks are property of their respective owners.



### FCC WARNING

This device complies with part 15 of the FCC Rules. Operation is subject to the following two conditions: (1) this device may not cause harmful interference, and (2) this device must accept any interference received, including interference that may cause undesired operation.

Any changes or modifications not expressly approved by the party responsible for compliance could void the user's authority to operate the equipment.

NOTE: This equipment has been tested and found to comply with the limits for a Class B digital device, pursuant to Part 15 of the FCC Rules. These limits are designed to provide reasonable protection against harmful interference in a residential installation. This equipment generates, uses and can radiate radio frequency energy and, if not installed and used in accordance with the instructions, may cause harmful interference to radio communications. However, there is no guarantee that interference will not occur in a particular installation. If this equipment does cause harmful interference to radio or television reception, which can be determined by turning the equipment off and on, the user is encouraged to try to correct the interference by one or more of the following measures:

- Reorient or relocate the receiving antenna.
- Increase the separation between the equipment and receiver.
- Connect the equipment into an outlet on a circuit different from that to which the receiver is connected.
- Consult the dealer or an experienced radio/TV technician for help.

To maintain compliance with FCC's RF Exposure guidelines, This equipment should be installed and operated with minimum distance 15cm between the radiator your body: Use only the supplied antenna.

### IC Warning

This device complies with Industry Canada's licence-exempt RSSs. Operation is subject to the following two conditions:  
 (1) This device may not cause interference;  
 (2) This device must accept any interference, including interference that may cause undesired operation of the device.

Le présent appareil est conforme aux CNR d'Industrie Canada applicables aux appareils radio exempts de licence. L'exploitation est autorisée aux deux conditions suivantes:  
 (1) l'appareil ne doit pas produire de brouillage, et  
 (2) l'utilisateur de l'appareil doit accepter tout brouillage radioélectrique subi, même si le brouillage est susceptible d'en compromettre le fonctionnement.

The information listed above provides the user with information needed to make him or her aware of a RF exposure, and what to do to assure that this radio operates within the FCC exposure limits of this radio.

The device complies with RF specifications when the device used at 10cm from the body. Third-party belt-clips, holsters, and similar accessories used by this device should not contain any metallic components. Body-worn accessories that do not meet these requirements may not comply with RF exposure requirements and should be avoided. Use only the supplied or an approved antenna.