

USER MANUAL

SMART SHIATSU FOOT MASSAGER

MODEL: MDFM500

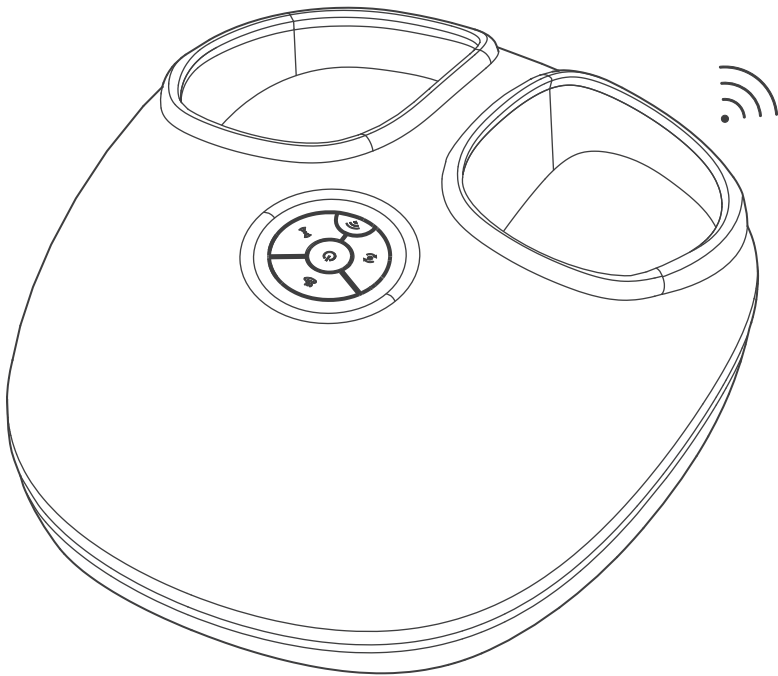


TABLE OF CONTENTS

IMPORTANT SAFEGUARDS	3
GETTING TO KNOW YOUR FOOT MASSAGER.....	5
BEFORE FIRST USE	7
OPERATING INSTRUCTIONS	13
CARE & MAINTENANCE	15
TROUBLESHOOTING	16
FCC STATEMENT	17
WARRANTY INFORMATION	18
CUSTOMER SUPPORT	19
NOTES	20

IMPORTANT SAFEGUARDS

DANGER:

- **ALWAYS** unplug this massager from the electrical outlet immediately after using and before cleaning.
- Examine your massager's fabric covering for any sign of damage before using. If there are any blisters, tears, or cracks, do not use your massager.
- **NEVER** use pins or other metallic fasteners with this massager.
- Keep dry. **DO NOT** use the massager if it is wet.

WARNING:

- **DO NOT** leave your massager unattended when plugged in. Unplug when not in use, and before putting on or taking off parts.
- **DO NOT** operate under a blanket or pillow. Overheating can occur causing fire, electric shock, or other injuries.
- Close supervision is necessary when your massager is used by or near children, invalids, or persons with disabilities.
- **ONLY** use this appliance as directed in this manual. Do not use attachments not recommended by MEDCURSOR.
- **DO NOT** use the massager if it has been dropped, if it is not working properly, or if any of its parts (including the cord or plug) are damaged.
- **DO NOT** use the massager if it has been dropped in water.
- Turn off and stop using the massager immediately if it makes an unusual noise, emits a strange smell, or if smoke comes from it.
- **DO NOT** carry the massager by the cord.
- Keep the cord and adapter away from heated surfaces.
- **DO NOT** insert any object into any opening unless directed by the manual.
- **DO NOT** use outdoors.
- **DO NOT** operate where aerosol (spray) products are being used or where oxygen is being administered.
- To disconnect, turn off all controls, then unplug.
- The massager may get hot enough to cause burns on any control setting.
- **DO NOT** use when sleeping.
- **DO NOT** use it on infants, disabled persons, or people who are sleeping or unconscious.

- **DO NOT** use it on sensitive skin or if you have poor blood circulation. Check the skin in contact with the heated area of the massager frequently to reduce the risk of blistering.
- **DO NOT** use this massager on swollen or inflamed areas. If you have any injury, disease, or reduced feeling in your lower legs or feet, then consult a physician before using.
- The massager is not intended for medical use or as a substitute for medical attention.
- **DO NOT** crush the massager.
- **DO NOT** use this massager for more than 30 minutes at a time.
- Never stand with feet in the massager. Only use while seated.
- **DO NOT** stand on the massager or place heavy objects on it.
- **DO NOT** remove the housing cover.
- **DO NOT** try to repair the massager. Contact Customer Support if the massager is malfunctioning.
- Positioning your massager incorrectly or applying excess pressure may result in pain or injury.
- Not for commercial use. Household use **ONLY**.

**SAVE THESE INSTRUCTIONS
HOUSEHOLD USE ONLY**

GETTING TO KNOW YOUR FOOT MASSAGER

1) PACKAGE CONTENTS

1 x Smart Shiatsu Foot Massager

1 x DC Adapter

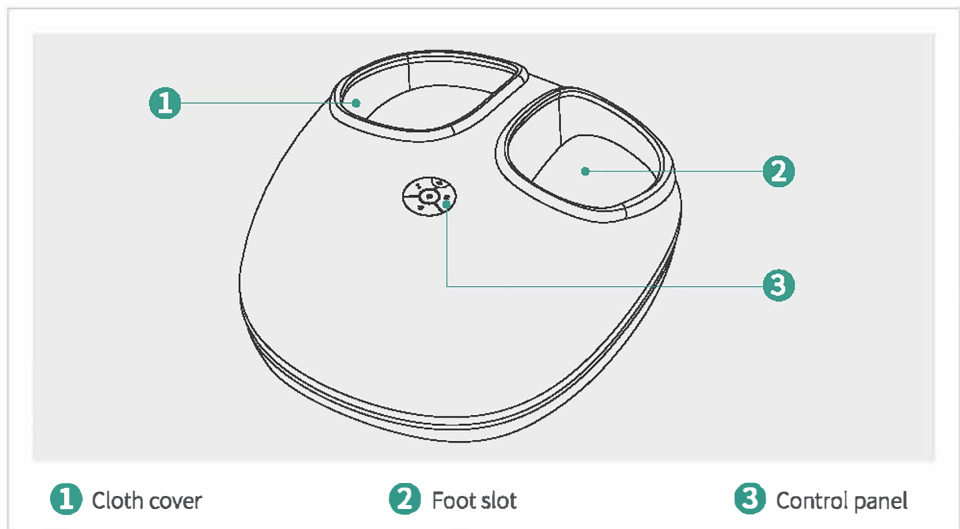
1 x User Manual

1 x Warranty Card

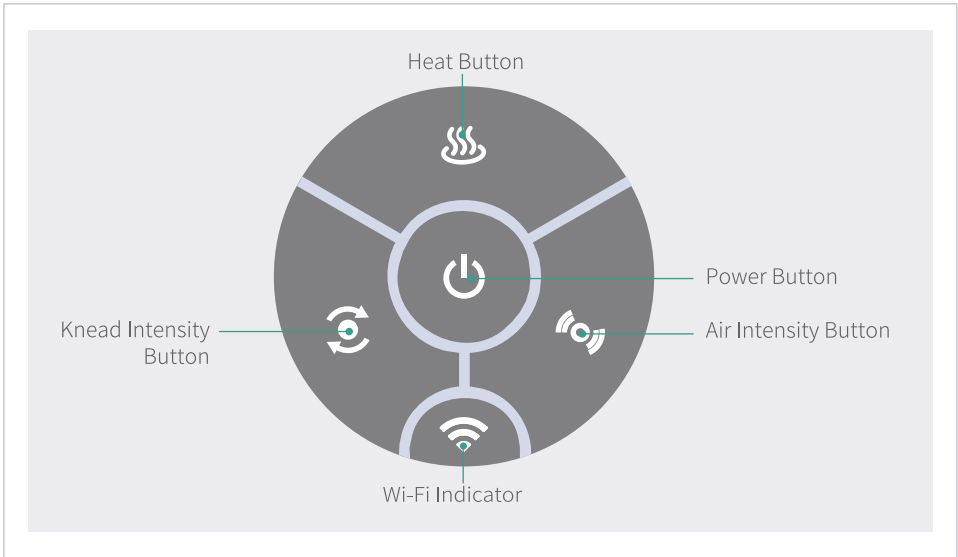
2) SPECIFICATIONS










Specifications:	MDFM500
Input:	12V 2.5A
Unit size (LxWxH):	14.56 x 12.99 x 7.28 inch
Weight:	5.88lbs
Input Power:	30 watts
Website:	www.medcursor.com
Email:	support@medcursor.com

3) PRODUCT DIAGRAM



4) CONTROL PANEL

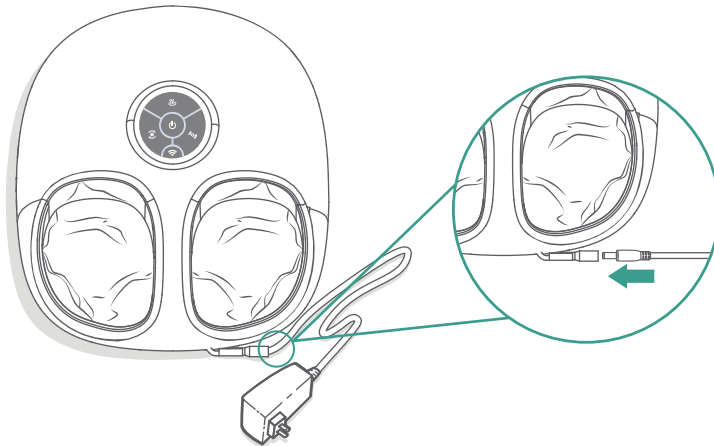


BUTTON	FUNCTION
POWER	Short press this button to turn on the device. Short press again at any time to turn off the device. Long press 3 seconds to turn on the Wi-Fi.
HEAT	3 Heat Levels Select heat level from low  , medium  , or high  .
AIR INTENSITY	3 Air Intensity Levels Select air pressure intensity from low  , medium  , or high  .
KNEAD INTENSITY	3 Knead Intensity Levels Select knead intensity from low  , medium  , and high  .
WIFI INDICATOR	The white light flashes slowly, and the white light flashes quickly when the wifi connection is triggered.

BEFORE FIRST USE

USING THE MASSAGER

1. Remove the Smart Shiatsu Foot Massager and its accessories from the packaging box. Kindly check if all package contents are included.
2. Connect the DC power adapter to the massager [Figure 1.1] and plug it into an outlet.
3. If you feel mild pain during the initial use of the massager, we recommend you wear thick socks or put a towel under your feet to get moderate pressure and improve your massage experience. When you get used to the massage intensity, you can remove the towel or socks for a better massage experience.



[Figure 1.1]

MEDCURSOR APP SETUP

NOTE: Due to the ongoing updates and improvements, the MEDCURSOR app may look slightly different than shown in the manual. In case you see a different setup, just follow the in-app instructions.

MEDCURSOR APP SET UP

A. DOWNLOAD THE MEDCURSOR APP

To download the MEDCURSOR App, please scan the QR code or search for "MEDCURSOR" in Apple App Store® (iOS) or Google Play Store(Android).



Medcursor App



NOTE:

- For Android™ users, choose "Allow" to use Medcursor. It won't be used to record personal, private information.
- The Medcursor App is continually being improved and may change over time.
- If there are any differences, follow the in-app instructions.
- Follow the instructions to finish setting up your smart shiatsu foot massager.



B.CREATE / LOGIN YOUR OWN MEDCURSOR ACCOUNT

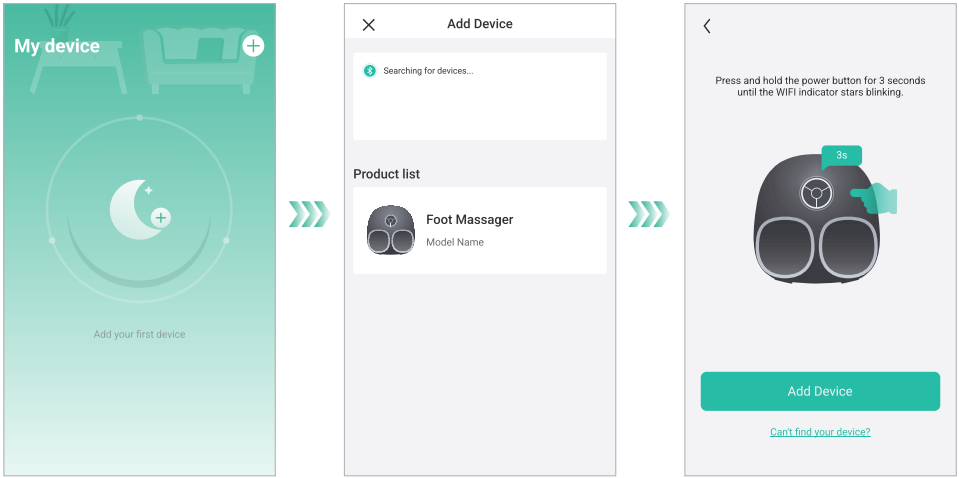
Open the Medcursor App, If you already have an account tap Log In. If create a new account, tap Sign Up.


NOTE:

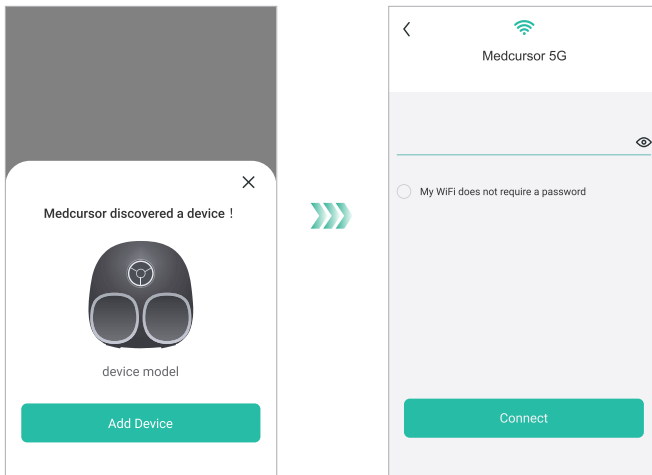
You must create your own MEDCURSOR account to use third-party services and products. These will not work with a guest account. With a MEDCURSOR account, you can also allow your family and friends to control your smart shiatsu foot massager machine.

C.PAIRING WITH MEDCURSOR APP

1. Turn on your smartphone's Bluetooth®  and  Wi-Fi®.
2. Touch the device icon and follow the in-app instructions to touch the button to complete the pairing.




3. Tap + in the Medcursor App and select your smart foot massager machine from the Product list at the first connection. Once paired successfully, it will remain in "Searching for Devices". You can tap it directly the next time you use it.
4. Press and hold power button  for 3s to turn on Wi-Fi® of the machine. And then the Wi-Fi® indicator will blink and wait for pairing. The connection status will be displayed on the App.



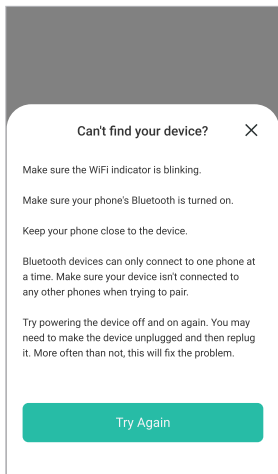
5. If it discovered the smart foot massager machine, please tap "Add Device" and set up Wi-Fi®.

NOTE:

- Make sure your router is turned on and connectable.
- The Wi-Fi® password is entered correctly.
- Make sure your Wi-Fi® signal can cover the device.
- Only use 2.4G network connection.

 **ATTENTION!**
If you're having trouble setting it up or pairing it, please follow the steps below to troubleshoot.

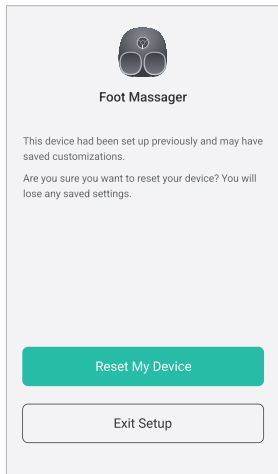
 **TROUBLESHOOTING**



Can't find your device

SOLUTIONS:

1. Make sure the Wi-Fi® indicator is blinking.
2. Make sure your phone's Bluetooth® is turned on.
3. Please check that the foot massager machine device is plugged in and powered on, then click "Try Again" and follow steps 4 and 5 of **PAIRING WITH MEDCURSOR APP.**
4. Turn this device off and on again by unplugging the device and reinserting it.



Reset My Device

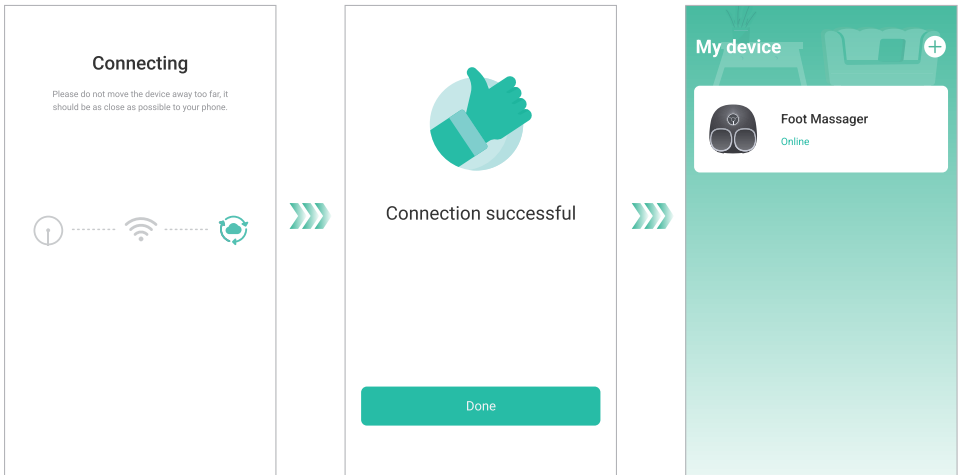
WHY DOES IT SHOW THIS REMINDER?

1. You or your family have used another Medcursor account to connect this foot massager machine with Medcursor App before.
2. Repeat connecting the same device on this app.

SOLUTION:

Please click "Reset My Device" and then you can connect to other new devices. However, it will lose all your saving settings on this device.(You can also use this method to reset your device upon demand)If you don't want to reset your device, please click "Exit Set Up" and it will keep all your saved settings.

D. PAIRING WITH THE DEVICE



1. It takes time for the first time to pair with the Medcursor App. Please wait for the connection, and you can visit the foot massager machine operation interface after the connection is successful.

NOTE: The Wi-Fi indicator will keep on once connected successfully.

2. This device needs to be set up above these steps only for the first time, just click up the device on "My device" at the next time of use, and it will automatically connect.

NOTE: If you complete the connection and unplug the device, you can see the device status is off on your app. Please wait for 5 - 10 seconds after connecting the plug to the power source again to let the device automatically connect to the App. (The Wi-Fi indicator will blink for 5 - 10 seconds and then change to keep on once automatically connected.)



Bluetooth® Connection Failed

If the Bluetooth® connection failed, please keep your phone close to the device and reconnect again.




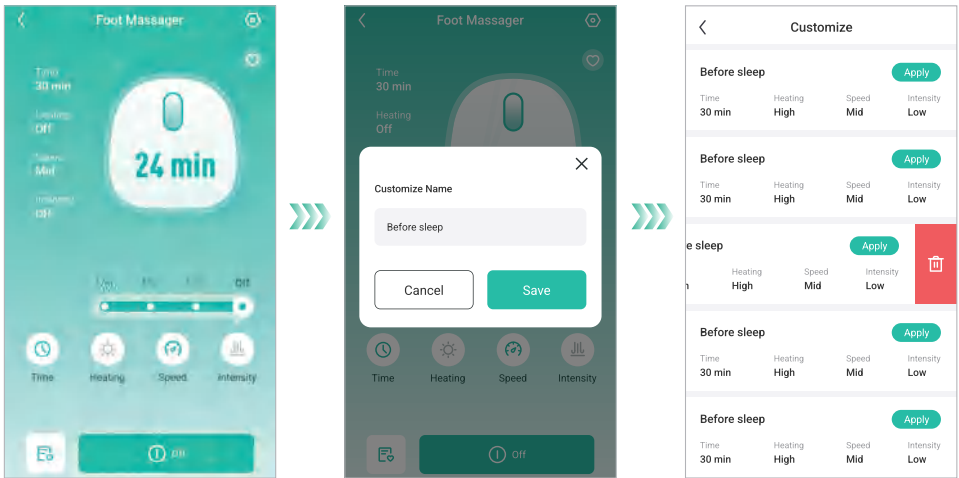
Wi-Fi® Connection Failed

If the device network configuration failed, please make sure the Wi-Fi® password is correct, or try to switch Wi-Fi® to connect.



Device Connection Failed

Press and hold the power button  for 3 seconds until the Wi-Fi® indicator starts blinking, and reconnects again.



APP FUNCTIONS:

1. Remote Control

All basic functions are available on the app.

2. Custom Timer


It can be timed on the App, not limited to 15 or 30 minutes of the machine itself.

3. Custom Mode Setting




Save your favorite settings, and you can select them for the next use.

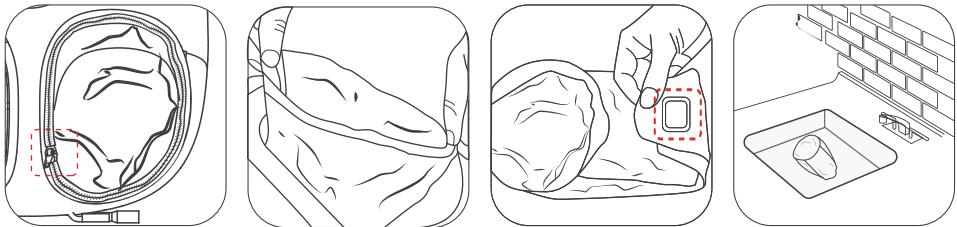
OPERATING INSTRUCTIONS

OPERATION GUIDE

1. Connect the plug to the power source. The Power indicator should blink and the massager is on standby.
2. Press the Power Button . The heat level, knead intensity and air intensity will be at a low level. And the default auto shut-off will be 15 minutes.

NOTE: The default auto shut-off will be 15 minutes for the massager. But you can use App to switch the auto shut-off timer to 15 or 30 minutes.

3. Press air intensity button  to select the air pressure level among low level(green light), medium level(yellow light), high level (red light) and off mode(the light is off).
4. Press knead intensity button  to select the knead level among low level(green light), medium level(yellow light), high level (red light) and off mode(the light is off).
5. Press heat button  to select the heat level among low level(green light), medium level(yellow light), high level (red light) and off mode(the light is off).
6. The foot massager fits up to US Men's size 11 (EU Men's size 45).
7. To remove and wash the foot cover:



TIPS:

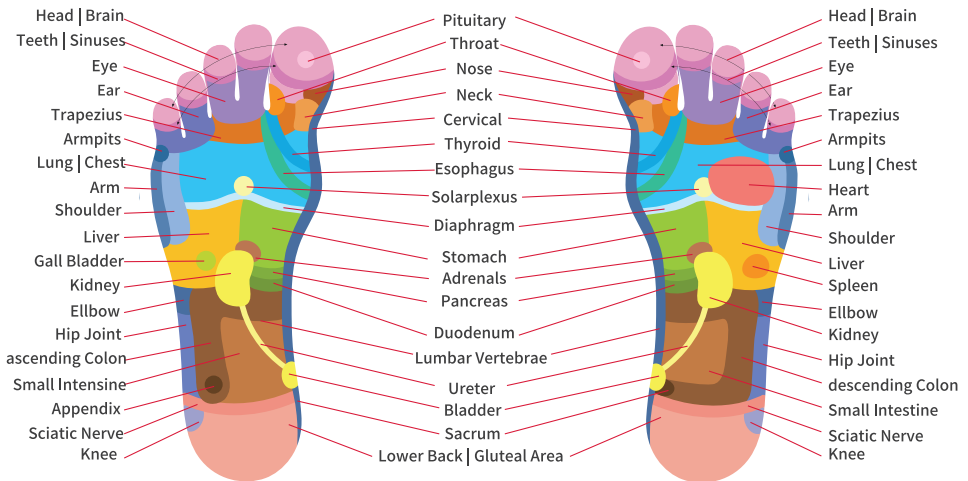
- Do not use this massager for more than 30 minutes at a time.
- If the massager is used for too long, overheat protection will activate and the massager will shut down. Allow the massager to cool for about 40 minutes before using again.
- Avoid using it with only one foot unless necessary, as this may shorten the life of the massager.
- If you feel uncomfortable or feel pain while using the massager, stop using it immediately. Consult a physician if necessary.

FOOT REFLEX ZONES

Reflexology has the advantage over an all-body massage due to the fact that there are approx. 72,000 nerve endings of different organs in the feet. Precisely performed massages can be very beneficial to our health and well-being.

Precision massages of the foot reflex zones can stimulate metabolism and blood circulation among other things, it also stimulates digestion and supports the self-healing process of the body.

The more we care about the vitality of our feet, the better it is for our bodies. The feet are known as a microsystem in which each organ is said to be connected and reflected and can be treated individually.



- > Neglecting the feet can affect the whole body.
- > Muscle tension can arise due to poor posture of the body. This in turn can have negative effects on the spinal column and the nerve tracts and result in other physical complaints.
- > Sleeping problems can cause cold feet which usually result in circulatory disorders.
- > Swollen legs, muscle cramps, and blood congestion can be caused by excessive sitting and physical inactivity.
- > Provide your feet with sufficient energy so that the veins embedded in the muscles can transport the blood throughout the entire body again.

CARE & MAINTENANCE

SECURITY AND MAINTENANCE

- The use of non-rated voltage not (DC 12V/2.5A) is prohibited.
- It is prohibited for non-professional personnel to repair the massager, or replace parts.
- If the power cord is damaged, it must be replaced by the maintenance department or similarly qualified persons approved by the manufacturer so as to avoid potential hazards.
- **DO NOT** use or store the appliance in wet environments or in high temperatures.
- Unplug the power cord from the outlet after use.
- Ensure that the operation of this product does not exceed more than 30 minutes at any given time.
- If you feel unwell or in any unusual discomfort, please stop using the product immediately.
- If a high temperature or foul odor is experienced while using the product, stop using it immediately and unplug the device
- Any Individual who may be pregnant or recently given birth, has a heart condition or a pacemaker, suffers from diabetes or other sensory impairment, phlebitis and/or thrombosis, joint dysfunction, inflammation or injuries, weak bones, osteoporosis, a high fever, an abnormal or curved spine, is at an increased risk of developing blood clots, has pins/screws/artificial joints or other medical devices implanted in his/her body, is being treated for a medical condition or physical injury or is under a doctor's care should consult with a medical professional before using a massaging device designed for home use.
- **DO NOT** use sharp objects to handle the product in order to avoid damage.
- Please keep the product clean. You can use a soft cotton cloth and neutral detergent to clean it.
- **DO NOT** stand when you are using the massager. Do not place excessively heavy objects on the device in order to avoid damage.
- The product possesses a temperature-protection device; it will automatically shut-off when the temperature exceeds the safe limit.
- Launder the removable foot sleeves when necessary. Wash on delicate cycle in cool or warm water (lower than 122°F / 50°C).
- Use a soft cotton cloth and non-abrasive detergent to clean the massager. **Never** immerse in water.
- Keep away from heat sources and direct sunlight.
- **DO NOT** store in extreme temperatures. Storage temperature should be 14°–122°F / -10°–50°C.

TROUBLESHOOTING

PROBLEM	POSSIBLE SOLUTION
The massager cannot be turned on.	Make sure the massager is plugged in.
	Unplug the AC power adapter from the massager and plug it back in.
The massager won't connect to my phone.	Make sure your phone has Bluetooth turned on and is within 32 ft / 9.75 m of the massager.
	Make sure your massager isn't connected to any other phones. The devices can only connect to 1 phone at a time.
The massager is turned on, but the massage functions stopped working.	If you have been using the massager for a long time, overheat protection may have activated. Turn the massager off and allow it to cool for at least 40 minutes.
The massage intensity is too strong or too weak.	Change the mode and intensity settings of the massager to match your preferences.
An unknown error occurred.	Turn off the massager and turn it back on again.
	Unplug the AC power adapter from the massager and plug it back in.
The massager is making an unusual noise, emitting a strange smell, or smoke is coming from it.	Turn off and stop using the massager immediately. Contact Customer Support

FCC STATEMENT

This device complies with Part 15 of the FCC Rules. Operation is subject to the following two conditions:

- (1) This device may not cause harmful interference.
- (2) This device must accept any interference received, including interference that may cause undesired operation.

NOTE: This equipment has been tested and found to comply with the limits for a Class B digital device, pursuant to Part 15 of the FCC Rules. These limits are designed to provide reasonable protection against harmful interference in a residential installation. This equipment generates, uses and can radiate radio frequency energy and, if not installed and used in accordance with the instructions, may cause harmful interference to radio communications. However, there is no guarantee that interference will not occur in a particular installation. If this equipment does cause harmful interference to radio or television reception, which can be determined by turning the equipment off and on, the user is encouraged to try to correct the interference by one or more of the following measures:

- Reorient or relocate the receiving antenna.
- Increase the separation between the equipment and receiver.
- Connect the equipment into an outlet on a circuit different from that to which the receiver is connected.
- Consult the dealer or an experienced radio/TV technician for help.

FCC CAUTION: Any changes or modifications not expressly approved by the party responsible for compliance could void the user's authority to operate this equipment.

FCC RADIATION EXPOSURE STATEMENT

This equipment complies with FCC radiation exposure limits set forth for an uncontrolled environment. End users must follow the specific operating instructions for satisfying RF exposure compliance. To maintain compliance with FCC RF exposure compliance requirements, please follow operation instructions as documented in this manual. This transmitter must not be co-located or operating in conjunction with any other antenna or transmitter. The availability of some specific channels and/or operational frequency bands are country dependent and are firmware programmed at the factory to match the intended destination. The firmware setting is not accessible by the end user.

This equipment complies with Part 15 of the FCC Rules. Operation is subject to the following two conditions:

- (1) This device may not cause harmful interference, and**
- (2) This device must accept any interference received, including interference that may cause undesired operation.**

WARRANTY INFORMATION

TERMS & POLICY

MEDCURSOR Corporation (“MEDCURSOR”) warrants this product to the original purchaser to be free from defects in material and workmanship, under normal use and conditions, for a period of 1 year from the date of original purchase. MEDCURSOR agrees, at our option during the warranty period, to repair any defect in material or workmanship or furnish an equal product in exchange without charge, subject to verification of the defect or malfunction and proof of the date of purchase. There is no other express warranty. This warranty does not apply:

If the product has been modified from its original condition;

- If the product has not been used in accordance with directions and instructions in the user manual;
- To damages or defects caused by accident, abuse, misuse or improper or inadequate maintenance;
- To damages or defects caused by service or repair of the product performed by an unauthorized service provider or by anyone other than MEDCURSOR;
- To damages or defects occurring during commercial use, rental use, or any use for which the product is not intended;
- To damages or defects exceeding the cost of the product.
- MEDCURSOR will not be liable for indirect, incidental, or consequential damages in connection with the use of the product covered by this warranty.
- This warranty extends only to the original consumer purchaser of the product and is not transferable to any subsequent owner of the product regardless of whether the product is transferred during the specified term of the warranty.
- This warranty does not extend to products purchased from unauthorized sellers. MEDCURSOR’s warranty extends only to products purchased from authorized sellers that are subject to MEDCURSOR’s quality controls and have agreed to follow its quality controls.
- All implied warranties are limited to the period of this limited warranty.
- This warranty gives you specific legal rights and you may also have other rights which vary from state to state. Some states do not allow the exclusion or limitation of incidental or consequential damages, so the above limitation or exclusion may not apply to you.
- If you discover that your product is defective within the specified warranty period, please contact Customer Support via support@medcursor.com. DO NOT dispose of your product before contacting us. Once our Customer Support Team has approved your request, please return the product with a copy of the invoice and order ID.

- Every MEDCURSOR product automatically includes a 1-year warranty. To make the customer support process quick and easy, register your product online at www.medcursor.com.

CUSTOMER SUPPORT

1. If you have any product questions or concerns, please don't hesitate to contact us directly at: support@medcursor.com or visit our website at: www.medcursor.com.
2. We have a hassle-free warranty and customer service team for satisfactory solutions to any issue you might have.



Scan to Follow Us



@Medcursor
www.medcursor.com