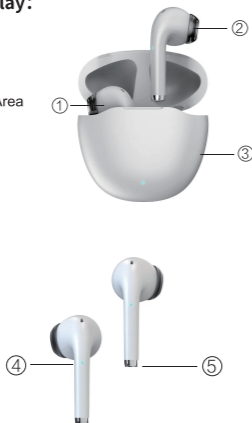


T20 Wireless Bluetooth Earbuds User Manual



Product Display:

- 1.Left
- 2.Right
- 3.Charging Case
- 4.Touch Control Area
- 5.Charging Pin



Earbud Spec :

Name: T20
 Bluetooth Version: V5.2
 Earbuds Charging Input: DC5V
 Horn: φ13mm
 Support Protocol: HFP1.7, HSP1.2, A2DP1.3, AVCRP1.6, SPP1.2, PAAP1.0

Wearing Method: In-ear
 Bluetooth Range: ≥10m
 Earbud Battery:25mAh
 Music Time: 4~5 h
 Input Current:200mA
 Charging Time:≤2.5h

Charging Case Spec :

Battery :500mAh
 Standby Time :90Days

Touch Control Operation:

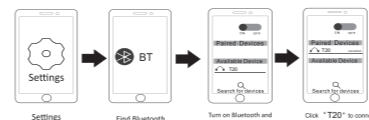
Power ON:01.Take the earbuds out of the charging case.02.Long press the earbuds on the touch position for 2S.
Power OFF:01.Put the earbuds back into the charging case, close the lid.02.Long press the earbuds on the touch position for 5S.

Music PLAY/PAUSE: Double hit the right earbud.
Music PREVIOUS: Triple hit the left earbud.
Music NEXT: Triple hit the right earbud.

Wake up Siri/Voice Assistant:Double hit the left earbud.
Answer a call: Double hit the left or the right earbud.
Decline or Hang up: Long press the left/right earbud.
Switch from the primary to secondary:
 When using the both earbuds, put the right or the left earbud into the charge case, the other side still works.

Operation Instructions:

- 1)Earbuds put back into the charging case about 3 seconds, earbuds are in charging mode and power off automatically.
- 2)Take the earbuds out of the charging case, earbuds power on automatically. After power on, the left and right earbuds team with each other automatically.
- 3)Turn on the phone: Setting > Wireless & Networks > Bluetooth > On: Enable > Scan for Devices.
- 4)Search for Bluetooth name " T20 ", and tap to connect till seeing " connected". Earbuds can be used.



Earbuds Voice Prompts:

Power On	Dong	Power Off	Dong
Connected	Dong	Disconnected	Dong
Low Battery Alarm	Dong	Pairing	Dong

Charging Case Indicator:

Charging Case in Charging	In charge, the red indicator blinks	Fully charged, the red indicator stays on.
Earbuds in Charging	Blue indicator blinks 4seconds and goes out.	

Tips:

- 1)Bluetooth earbuds connect to the phone as instructions at first time. The second time use, Bluetooth earbuds will connect back to the phone automatically.
- 2)The left and right earbuds can be used separately, and each earbud can be connected separately. Primary earbud and secondary earbud can be switched freely.

Note:

- 1)While the earbuds in Charging mode, they power off automatically and disconnect from the phone. 5V charger ±0.2V only. Over Voltage will burn the earbuds.
- 2)If the mobile phone does not find the Bluetooth device " T20 ", turn off the phone Bluetooth, and turn it on again. Research the Bluetooth device " T20 ".
- 3)When the left or right earbud does not work, please check whether the earbud Charging Pin and charging case is clean. Use the flannellette to clean the charging pin, put the earbuds into the charging case. After 15 seconds, take out the earbuds, reconnect them with the mobile phone.

Warning:

- 1.Do not use the Corrosive cleaner to clean the product.
- 2.Do not put the product near the fire, like cooking stoves.
- 3.Do not expose the product under the sunshine directly for a long time.
- 4.Do not put the product into the fire, to prevent the explosion.
- 5.Do not attempt to dismantle or modify the product by yourself, otherwise the possible damage or burn it may cause will not be guarantee.
- 6.Do not use the product in the rain.
- 7.Do not expose the product to high temperature, corrosive or high-pressure environment. If you do not use the product in a long period of time, please charge the charging case once a month regularly.

T20 无线蓝牙说明书



产品图示

- 1.左耳
- 2.右耳
- 3.充电仓
- 4.触控区
- 5.充电仓触点



耳机参数:

产品名称: T20
 蓝牙版本:Bluetooth 5.2
 耳机输入电压:DC5V
 喇叭规格: 13mm
 佩戴方式: 入耳式
 有效距离: ≥10m (无障碍)
 电池容量: 25mAh
 耳机播放时间: 4~5 h

充电仓参数:

电池容量: 500mAh
 充电仓待机时间:90天
 充电仓充电电流:200mA
 充电仓充电时间: ≤2.5h

按键功能操作

开机: ① 耳机拿出充电仓自动开机 ② 长按触摸按键2S开机
 关机: ① 耳机放入充电仓, 合盖耳机自动关机 ② 长按触摸按键5S关机
 播放/暂停: 双击右耳

上一曲: 三击左耳 下一曲: 三击右耳
 Siri 唤醒/语音助手: 双击左耳
 接听电话: 双击左耳或右耳 (来电时)
 拒接来电/挂断: 长按左耳/右耳
 主从切换:

双耳使用时, 将左耳或右耳放入充电仓充电. 单耳能正常使用.

操作说明

- 1) 耳机放入充电仓约10S后, 耳机自动进行充电并且处于关机状态。
- 2) 当耳机左右耳从充电仓内取出时, 耳机自动组对。
- 3) 用户打开手机 (或其他蓝牙设备) 蓝牙, 等待手机搜索附近的蓝牙设备 "T20"。
- 4) 点击手机搜索到的耳机蓝牙名称 " T20 "。 进行连接, 等待手机与耳机连接成功后 连接成功语音提示 "咚"。



耳机提示音

开机	Dong	关机	Dong
已连接	Dong	已断开	Dong
低电量	Dong	组队成功	Dong

充电仓指示灯

充电仓充电指示灯	充电中, 红色指示灯闪烁	充满电, 红色指示灯常亮
充电仓给耳机充电指示灯	蓝色指示灯亮4秒后熄灭	

特殊操作

- 1) 自动回联: 连接好手机后, 关闭蓝牙耳机, 重新打开蓝牙耳机, 耳机会自动重新连接手机。
- 2) 本耳机为双发耳机, 具有主从切换功能, 当其中一只关机时, 另外一只耳机自动切换为主机。

温馨提示

- 1) 耳机充电过程中, 耳机处于关机状态, 会断开与手机的连接, 电源适配器必须选用5V ± 0.2V。
- 2) 耳机开机后, 如果手机未搜索到耳机, 可以先关闭手机蓝牙再重新打开手机蓝牙, 手机会重新搜索。
- 3) 当耳机一边无声时, 请检查充电仓和耳机底部充电端子是否有脏污, 如有脏污请使用棉签进行清洁或将左右耳重新放入充电仓约15S后再取出, 待左右耳组队成功后再次连接手机。

- 4) 当耳机发现异常时, 可将左右耳机放入充电仓15S复位, 清除手机连接记录, 重新连接。

注意事项

- 1.切勿使用具有腐蚀性的清洁剂清理本产品。
 - 2.切勿让本产品加热或靠近火源, 如煮食炉。
 - 3.切勿让本产品长时间受阳光直接照射。
 - 4.切勿将本产品弃置于火中, 避免发生爆炸。
 - 5.切勿尝试拆开本产品作出任何修改, 因为它并不包含任何维修组件。
 - 6.切勿在雨中使用本产品。
 - 7.如果长时期内不打算使用本产品, 请您将它存储在干燥的环境中, 并每月至少为耳机充电一次以延长寿命, 避免极端的温度和灰尘。
- 本产品自购买之日起三个月内予以免费保修。
 保修地区: 本保修服务条款仅限于大陆地区。

This device complies with part 15 of the FCC Rules. Operation is subject to the following two conditions: (1) This device may not cause harmful interference, and (2) this device must accept any interference received, including interference that may cause undesired operation.

Any Changes or modifications not expressly approved by the party responsible for compliance could void the user's authority to operate the equipment.

Note: This equipment has been tested and found to comply with the limits for a Class B digital device, pursuant to part 15 of the FCC Rules. These limits are designed to provide reasonable protection against harmful interference in a residential installation. This equipment generates uses and can radiate radio frequency energy and, if not installed and used in accordance with the instructions, may cause harmful interference to radio communications. However, there is no guarantee that interference will not occur in a particular installation. If this equipment does cause harmful interference to radio or television reception, which can be determined by turning the equipment off and on, the user is encouraged to try to correct the interference by one or more of the following measures:

- Reorient or relocate the receiving antenna.
- Increase the separation between the equipment and receiver.
- Connect the equipment into an outlet on a circuit different from that to which the receiver is connected.
- Consult the dealer or an experienced radio/TV technician for help.