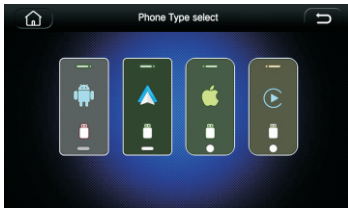


## VI.Function introduction and operation of Phone link

**Note:** In order to use the cell phone connection function, you need to select the connection method on the vehicle side first.

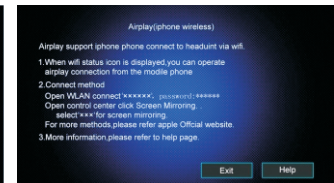
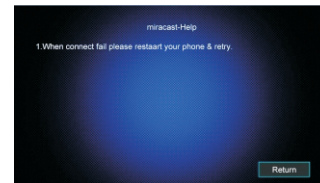
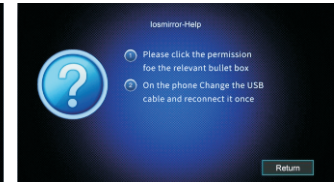
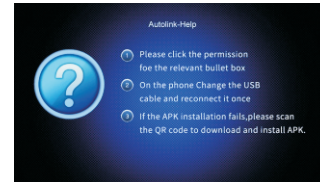
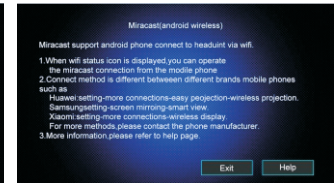
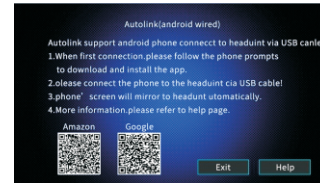
Introduction to Phone link's functions: When using an Android phone for wired phone interconnection, the phone needs to turn on "USB Debugging" in "Developer Options".

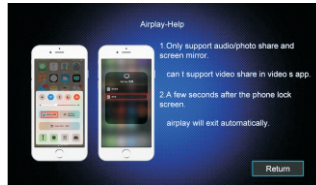


1. Tap this key to enter the interface of Android device wired phone interconnection function;
2. Tap this key to enter the interface of wired mobile interconnection for Apple devices;
3. Tap this key to enter the wired CAR PLAY interface;
4. Tap this key to enter the Android auto interface;

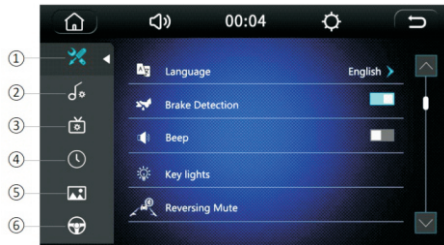
## Common problems when using the cell phone interconnect function:







1. When using the wired phone interconnect back control function, you need to connect Bluetooth to use;
2. Some Android phones need to be touched in Mobile>Application Management > Autolink > Open "Force full screen display";



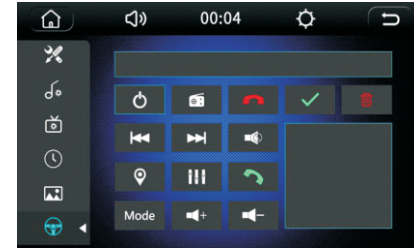



## VII. Introduction and operation of setting menu function



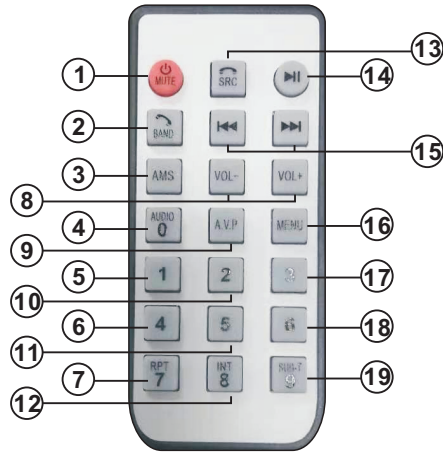
1.  Tap this key to enter the function setting interface, which can be slid up and down by touching it;
2.  Tap this key to enter the audio setting interface;
3.  Tap this key to enter the display settings interface;
4.  Tap this key to enter the time setting interface;
5.  Tap this key to enter the wallpaper setting interface;
6.  Tap this key to enter the direction control setting interface;

## VIII. Brief introduction and operation of learning function of direction control



1. Press and hold the steering wheel key, then click on the key icon on the steering wheel interface, the icon will change color;
2. After pressing all keys, tap , and learning is complete.

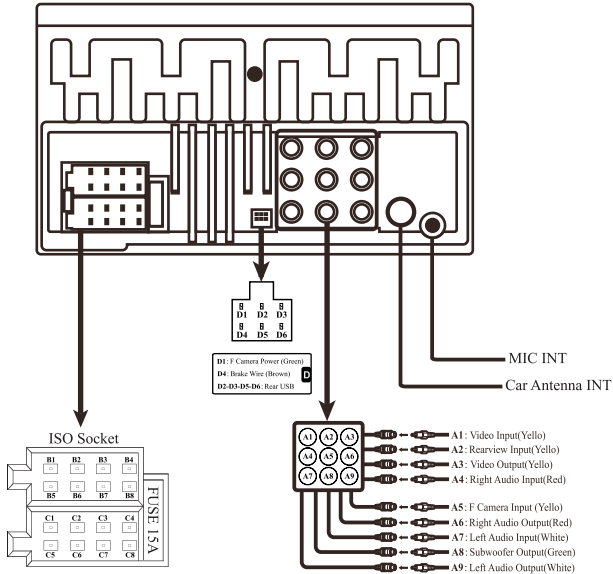
IX. Brief introduction and operation of remote control function



| Number | ICON | Features  | Features  | ICON | Number |
|--------|------|---|---|------|--------|
| 01     |      | short press into play, after play, short press for Mute, long press into off                      | short press into Bluetooth or receive phone, long press into BAND switch                          |      | 02     |
| 03     | AMS  | Auto scan and preview station   | short press number 0 :When playing audio video, optional song, BT can dial. Long press into AUDIO |      | 04     |
| 05     | 1    | short press number 1 :When playing audio video, optional song, BT can dial. Long press into AUDIO | short press number 4 :When playing audio video, optional song, BT can dial. Long press into AUDIO | 4    | 06     |

| Number | ICON    | Features  | Features  | ICON | Number |
|--------|---------|---|---|------|--------|
| 07     | 7       | short press number 4 :When playing audio video, optional song, BT can dial. Long press into RPT   | Volume adjustment   |      | 08     |
| 09     | A. V. P | Music/Movie/Photo Switching   | short press number 2 :When playing audio video, optional song, BT can dial.                     | 2    | 10     |
| 11     | 5       | short press number 5 :When playing audio video, optional song, BT can dial.                       | short press number 8 :When playing audio video, optional song, BT can dial. Long press into INT | 8    | 12     |
| 13     |         | short press for hung up phone, long press into SRC conversion                                     | Play/Pause  |      | 14     |
| 15     |         | short press into last and next song selection, long press into fast forward/backward              | Return main menu  | MENU | 16     |
| 17     | 3       | short press number 3 :When playing audio video, optional song, BT can dial.                       | short press number 6 :When playing audio video, optional song, BT can dial.                     | 6    | 18     |
| 19     | 9       | short press number 9 :When playing audio video, optional song, BT can dial. Long press into SUB-T |   |      |        |

### X. Introduction to interface definition



| B                                     |  | C   |  |
|---------------------------------------|--|---|--|
| <b>B1:</b> RR Speaker(Violet) +       |  | <b>C1:</b> Rearview Control Wire (Pink)                   |  |
| <b>B2:</b> FR Speaker(Gray) +         |  | <b>C2:</b> Steering Wheel Key Control Line (Orange/Black) |  |
| <b>B3:</b> FL Speaker(White) +        |  | <b>C3:</b> Power Antenna (Blue)                           |  |
| <b>B4:</b> RL Speaker(Green) +        |  | <b>C4:</b> To Ignition Key (Red)                          |  |
| <b>B5:</b> RR Speaker(Violet/Black) - |  | <b>C5:</b> Steering Wheel Key Control Line(Brown)         |  |
| <b>B6:</b> FR Speaker(Gray/Black) -   |  | <b>C6:</b> To Battery 12V(+)(Yellow)                      |  |
| <b>B7:</b> FL Speaker(White/Black) -  |  | <b>C7:</b> High Beam Line(Orange)                         |  |
| <b>B8:</b> RL Speaker(Green/Black) -  |  | <b>C8:</b> Ground Wire(Black)                             |  |



**CAUTION**  
This model is only applicable to the DC 15A 12V Power supply models.

### FCC Statement

This equipment has been tested and found to comply with the limits for a Class B digital device, pursuant to Part 15 of the FCC Rules. These limits are designed to provide reasonable protection against harmful interference in a residential installation. This equipment generates uses and can radiate radio frequency energy and, if not installed and used in accordance with the instructions, may cause harmful interference to radio communications. However, there is no guarantee that interference will not occur in a particular installation. If this equipment does cause harmful interference to radio or television reception, which can be determined by turning the equipment off and on, the user is encouraged to try to correct the interference by one or more of the following measures:

- Reorient or relocate the receiving antenna.
- Increase the separation between the equipment and receiver.
- Connect the equipment into an outlet on a circuit different from that to which the receiver is connected.
- Consult the dealer or an experienced radio/TV technician for help.

This device complies with part 15 of the FCC Rules. Operation is subject to the following two conditions:

- (1) This device may not cause harmful interference, and
- (2) this device must accept any interference received, including interference that may cause undesired operation.

Changes or modifications not expressly approved by the party responsible for compliance could void the user's authority to operate the equipment.

### RF Exposure Information

The device has been evaluated to meet general RF exposure requirement. The device can be used in portable exposure condition without restriction.