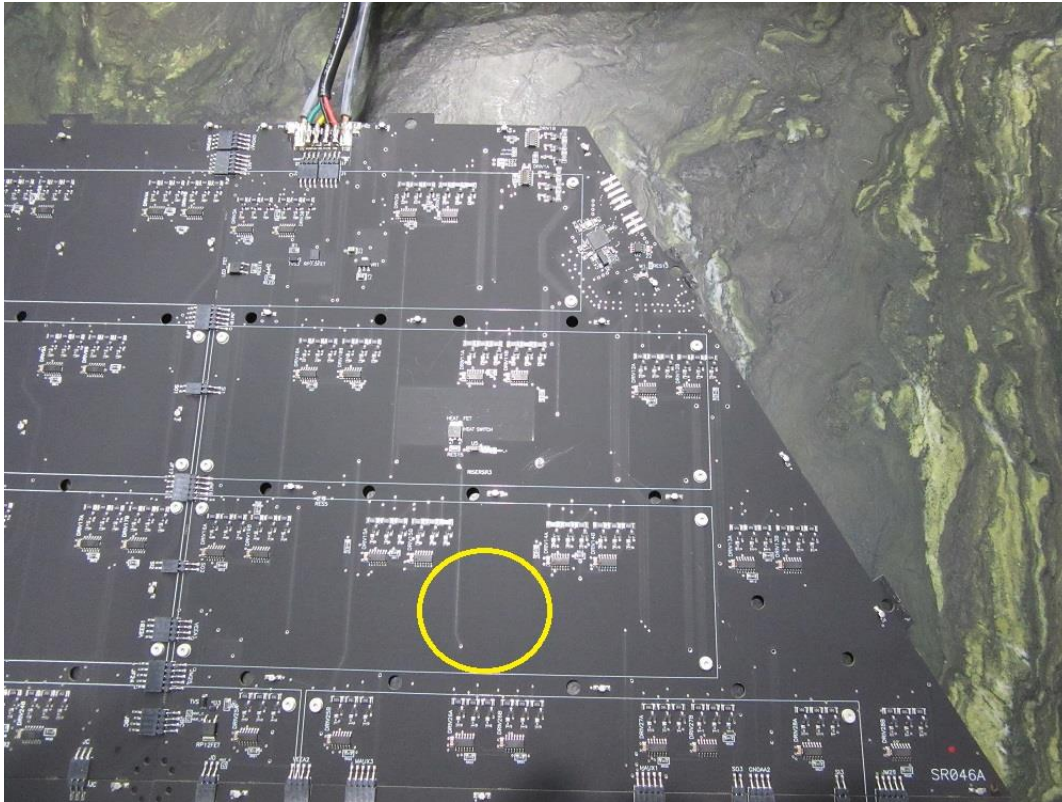


## Label and Location



The following will be silkscreened onto the area indicated by the yellow circle:

**FCC ID: 2A2MS-SR046**

**IC ID: 27936-SR046**

**HVIN: SR046**

This device complies with part 15 of the FCC Rules. Operation is subject to the following two conditions: (1) This device may not cause harmful interference, and (2) this device must accept any interference received, including interference that may cause undesired operation.