

VBELL 1 Arenti[®]

Wireless DoorBell

QUICK GUIDE



Compatible with Amazon Alexa & Google Assistant

Quick start guide

1. Packing list
2. Product description
3. Installation
4. Product configuration
5. Legal notice

1. Packing list



Camera 1X



Power adaptor 1X



USB cable 1X



Chime 1X



Screws 3X



Screwdriver 1X



Warning sticker 1X



3M sticker 2X



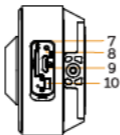
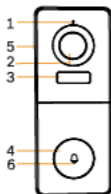
Quick guide 1X



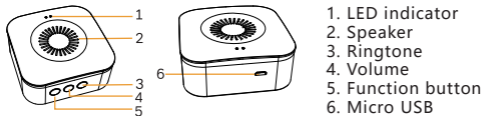
Bracket 1X*

* The bracket is attached to the camera.

2. Product description



1. Microphone
2. Lens
3. PIR
4. Doorbell button
5. Speaker
6. LED indicator
7. SD card slot
8. Reset
9. DC5V USB
10. Device ON/OFF



1. LED indicator
2. Speaker
3. Ringtone
4. Volume
5. Function button
6. Micro USB

Notice

To reset the device, press and hold the reset button for 5s. The camera beeps when the operation is complete.

LED indicator of camera:

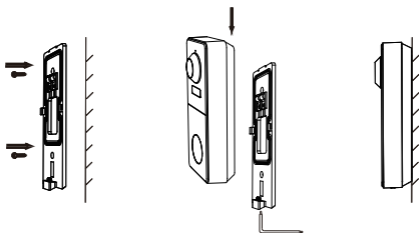
Flashing red light (slow)	Wait for network config
Flashing red light (fast)	Connecting the network
Fixed red light	Network is malfunctional
Fixed blue light	Camera is working correctly

LED indicator of chime:

Flashing red light	Wait for pairing
Fixed blue light	Succeed to pair

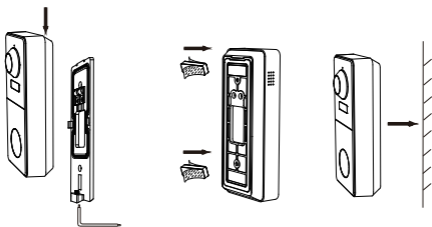
3. Installation

Installation with screws



1. Fix the bracket to the wall with the mounting screws.
2. Install the camera in the bracket and lock it with the screw.

Installation with 3M stickers



1. Lock the bracket to camera with the screw at the bottom.
2. Stick the adhesive tapes to the barcket.
3. Stick the other side of adhesive tapes to the wall.

4. Product configuration

Step 1 Turn on your camera.

Step 2 Connect your smartphone to the Wi-Fi network.

Step 3 Download Arenti app from the App Store or Google Play depending on your device.

Step 4 Launch the App and sign up for the first use.

Step 5 Follow the on-screen instructions to add your camera.

For more information, scan the QR code.



Notice

If you have multiple cameras, please follow step 5 again to add devices one by one.

To change Wi-Fi network, please restore the camera to factory settings and follow step 5 to add the camera.

Chime Pairing

1. Short press "🔊" (within 2 seconds), the status light flashes red slowly and the chime will be in pairing mode.



During pairing mode, it will blink red

2. Press the doorbell button to pair, when the chime status light turns off, and the song will play automatically, the chime pairing is successful at this time.

Description:

1. The chime can connect to maximum eight doorbells.
2. When the chime is in pairing mode, press the "🔊" again (within 2 seconds), the chime will automatically exit the pairing mode.
3. After adding the chime successfully, the volume will be adjusted to the maximum automatically. When it is at the minimum volume, it will return to the maximum volume after pressing "🔊".
4. Each press "🎵", will play the next song along with blinking blue light.

When playing ringtone, it will blink blue



Specifications


Sensor type	1/2.7" CMOS
Min. brightness	Color 0.01Lux@F1.2 Black and white 0.001Lux@F1.2
Resolution	3 Mega pixels
Lens	3.2 mm F2.0
Shutter	1/25-1/100,000 per second
Infrared	High power LED with ICR
Infrared distance	5 meters
FOV	130°
Video compression	H.264
Bit rate	32Kbps - 2Mbps
Max resolution	2304 x 1296
Framerate	1-25 per second
Picture settings	Support HD/SD; support flip
Storage	SD card (Max 128GB)
Audio	Two-way audio
Protocols	HTTP, DHCP, DNS
WiFi standard	IEEE802.11b/g/n
Frequency	2412-2462MHz/433.92MHz(SRD)
WiFi encryption	WPA-PSK/WPA2-PSK
Security	AES128
Working temperature	-20°C~50°C
Power	DC5V,1A
Consumption	4.5W MAX
Size(mm)	143x57x36
Battery	6700mAh
Standby consumption	200μA (average)
Work consumption	220mA (IR off)
Standby time Working time	10 months 3 months (10 times wake up per day)
PIR Detection Rangle	7m (Max.)
PIR Detection Angle	100°

5. Legal notice

Support

www.arenti.com

Symbols

 Direct current (DC)



Don't throw batteries or out of order products with the household waste (garbage). The dangerous substances that they are likely to include may harm health or the environment. Make your retailer take back these products or use the selective collect of garbage proposed by your city.



Hereby, Arenti, declares that the radio equipment type 'VBell 1' is in compliance with the Directive 2014/53/EU

The full test of the EU declaration of conformity is available at the following Internet address:
www.arenti.com



For indoor use only



FCC Statement:

Any Changes or modifications not expressly approved by the party responsible for compliance could void the user's authority to operate the equipment.

This device complies with part 15 of the FCC Rules. Operation is subject to the following two conditions: (1) This device may not cause harmful interference, and (2) this device must accept any interference received, including interference that may cause undesired operation.

FCC Radiation Exposure Statement :

This device complies with FCC radiation exposure limits set forth for an uncontrolled environment and it also complies with Part 15 of the FCC RF Rules. This equipment must be installed and operated in accordance with provided instructions and the antenna(s) used for this transmitter must be installed to provide a separation distance of at least 20 cm from all persons and must not be co-located or operating in conjunction with any other antenna or transmitter. End-users and installers must be provided with antenna installation instructions and consider removing the no-collocation statement.

Note: This equipment has been tested and found to comply with the limits for a Class B digital device, pursuant to part 15 of the FCC Rules. These limits are designed to provide reasonable protection against harmful interference in a residential installation. This equipment generates uses and can radiate radio frequency energy and, if not installed and used in accordance with the instructions, may cause harmful interference to radio communications. However, there is no guarantee that interference will not occur in a particular installation. If this equipment does cause harmful interference to radio or television reception, which can be determined by turning the equipment off and on, the user is encouraged to try to correct the interference by one or more of the following measures:

- Reorient or relocate the receiving antenna.
- Increase the separation between the equipment and receiver.
- Connect the equipment into an outlet on a circuit different from that to which the receiver is connected.
- Consult the dealer or an experienced radio/TV technician for help.