

KUMI M2 Smart Watch

USER MANUAL

Thank you for choosing KUMI smartwatch. This manual will give you a complete understanding of how to use the equipment. This device is mainly connected to the mobile phone through Bluetooth function, providing a variety of practical functions and services to facilitate your operation of the mobile phone, and has developed many functions for human sports and health.

This equipment is not a medical device, and the measurement data and results are only for reference, not for diagnosis and treatment.

Due to the continuous improvement, optimization and upgrade of the product, the user may expect slight difference between the actual product and the description in this manual.

Based on the principle of continuous improvement and continuous optimization, the company reserves the right to modify and improve any content and product information and functions described in the document without prior notice.

1. Packing List



KUMI M2 x1

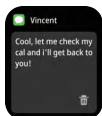


User Manual x1



Magnetic
Charging Wire x1

2. Introduction to Watch Touch Operation



Messages



Swipe Up



Custom

Swipe
Left
←



Swipe Down



Control Center

Swipe
Right
→



Menue

3. Introduction to Watch Button Functions



Button :

- 1) **Short Press:** Turn screen on/enter the menu/return to the dial
- 2) **Hold Down:**
 - a. Hold down to power on
 - b. Under the dial screen: Hold down for 2 seconds to power off
- 3) **5 Consecutive Clicks:** Make an SOS emergency call

4. Downloading the App

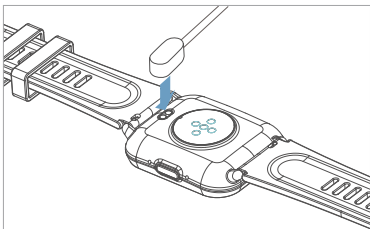
Scan the following QR code, download and install the App



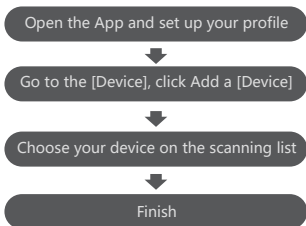
KUMI Model

5. Watch Charging and Activation

Charging the device to active before the first time using; To charge your device, plug the charging cable into the adapter or USB port on your computer.



6. Paring



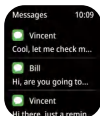
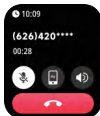
The MAC address on the "Setting"- "About" page could help you identify your device on the scanning list.

7. Function Introduction



ChatGPT

This feature is based on ChatGPT. For specific instructions on how to use it, please refer to the in-app help guide



Wireless calling

After connecting the smart watch to the phone, you can use the watch to dial to control the phone for making calls and answering the phone calls. You can also view the call history of the watch. You need to keep the connection between the watch and the phone stable when using the phone call function.

Sports

Smart watch automatically tracks steps taken on the screen. Note: Your movement stats reset to zero at midnight.

Training

Tap the training icon on the menu to start a new training measure recording, there are 100+ sport modes to be chosen. The last training recording will be shown on the training page.

Weather

It could show the weather info of current and tomorrow on the weather page. Weather info is synced after connecting with the APP, it will not be updated after a long disconnected.

Messages Reminder

The device can sync incoming notifications from social software etc.

Recently 5 messages can be stored.

Note: You can switch on/off the incoming notification in the APP.



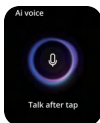
Remote Shutter

After connecting the device, you can remote control the camera on your phone.



Music Control

After connecting the device, you can remote control the music player on your phone.



AI Voice

In the state of Wireless connection, the watch can wake up the voice assistant on the phone.



Alarm

Set up the alarm on the APP, the device will vibrate to remind on time.



Remind to Move

The device will vibrate to remind you to make a relax after 1 hour sitting.

Note: You can switch on/off the feature in the APP.



Remind to Drink

The smart watch will remind you "Time to Drink Some Water" at the planned drinking time.

Note: You can set the feature in the APP.



Other Features


Other features include stopwatch, alarm, timer, brightness, mute on/off, theater mode, factory reset, power off and about.

8. Frequently Asked Questions

The watch does not turn on

- 1) Check whether the power is sufficient, use the charging cable to charge the watch, and the charging voltage shall not be higher than 5V;
- 2) Check whether the watch screen is damaged by external forces, such as accidental drop;
- 3) Check whether the watch has water, damp caused by internal circuit short circuit can not be turned on.

Bluetooth not connected or unable to connect

- 1) Slide down the dial interface to enter the control center, and check whether the icon  is black and not connected;
- 2) Check whether the bluetooth of the mobile phone is enabled normally and whether the APP has obtained the location pemmission;
- 3) Try restarting the device or performing a factory reset.

Why Android phones are easy to disconnect

APP must be running in the background, Bluetooth will not be automatically disconnected, but the android phone system memory management will force the APP to close, we need to manually close the phone system power saving mode or add the APP to the system management green background, APP will not be forced to close, specific settings please refer to the phone manual or consult the official customer service.

For more frequently asked questions, please check the App [My>FAQ] or send an email to our customer service email service@kumi.top

9. Safety Warning

Please read all safety information before using this product to ensure safe and proper use.

1. In case of equipment failure or factory reset, if you do not keep the backup file safely, you will not be able to recover the previous data. Be sure to back up all important data stored on the equipment and keep it in a safe place;
2. When using a power-intensive application or using an application on the device for a long time, the device feels hot to the touch, which is normal and does not affect the use or performance of the device;
3. If the touch screen is equipped with protective film or the hands are not clean, or the touch screen reacts slowly and may not work properly, if the touch screen is scratched or damaged, there may be a risk of water ingress and moisture;
4. This product is not suitable for children under the age of 14 to use alone;
5. All packaging materials (such as tape, plastic bags, plastic sheets, labels, binding lines, etc,) and small parts of the machine should not be touched by children under 3 years old to avoid suffocation risk.

Observe the following warnings to prevent personal injury or damage to equipment:

1. Do not allow children or animals to chew or swallow the equipment and accessories;
2. Do not poke eyes, ears or other body parts with the device or put the device in your mouth;
3. Do not store the equipment in an overheated or overcooled environment. It is recommended to use it in an environment with a temperature between -5°C and 40°C;
4. Do not store equipment near or inside heaters, microwave ovens, cooking equipment, or pressure vessels;
5. Do not drop, squeeze, impact or scratch the equipment;

6. Do not use the equipment in thunderstorm weather;
7. Please keep the equipment dry and clean;
8. Please observe all safety warnings and regulations regarding the use of mobile devices while driving;
9. Do not wear or use this product while charging.

10. Legal Statement

- Copyright © KUMI Technology Co., Ltd. All rights reserved.
- The company has the right to modify any information in this manual at any time without notifying any third party, and does not assume any responsibility to the third party for such modification;
- Without the written consent of the company, any unit or individual shall not extract, copy or use the contents of this manual in any other way, and shall not transmit it in any form;
- This guide is for reference only and does not constitute any form of commitment. Products (including but not limited to color, size screen display, etc.) shall be subject to the actual product;
- Due to the upgrade of software version, the contents introduced in this guide are for reference only. Please refer to the actual product;
- This equipment is not a medical device. The measurement data and results are for reference only and should not be used as the basis for medical diagnosis. If you feel uncomfortable, please consult a medical institution.

11. FCC Warning

This device complies with part 15 of the FCC Rules. Operation is subject to the following two conditions: (1) this device may not cause harmful interference, and (2) this device must accept any interference received, including interference that may cause undesired operation.

Any changes or modifications not expressly approved by the party responsible for compliance could void the user's authority to operate the equipment.

NOTE: This equipment has been tested and found to comply with the limits for a Class B digital device, pursuant to Part 15 of the FCC Rules. These limits are designed to provide reasonable protection against harmful interference in a residential installation. This equipment generates, uses and can radiate radio frequency energy and, if not installed and used in accordance with the instructions, may cause harmful interference to radio communications. However, there is no guarantee that interference will not occur in a particular installation.

If this equipment does cause harmful interference to radio or television reception, which can be determined by turning the equipment off and on, the user is encouraged to try to correct the interference by one or more of the following measures:

- Reorient or relocate the receiving antenna.
- Increase the separation between the equipment and receiver
- Connect the equipment into an outlet on a circuit different from that to which the receiver is connected.
- Consult the dealer or an experienced radio/TV technician for help. The device has been evaluated to meet general RF exposure requirement. The device can be used in portable exposure condition without restriction

FCC ID: 2A2L4-KUMIM2



KUMI Technology Co., Ltd.

Website: en.kumi.top

Mail: service@kumi.top

Room 405, Block A, United Financial Holdings
Building, No.1 Shihua Road, Hetao Shenzhen-Hong
Kong Science and Technology Innovation Cooperation
Zone, Futian District, Shenzhen

Made in China

