

Part Approval Sheet

Version : V1.0

Customer: Shenzhen Haikangsheng Intelligent Co., Ltd

Project: Bluetooth antenna

Part Name: Conducting wire

Part Color: _____

Part Number: _____

Sample Delivery Date: April 8, 2022

Sample Quantity: 5PCS

Sample type: Shrapnel + FPC

Remark: _____

Supplier sample production confirmation: (stamp required)

Formulate	Confirm	Approve	Quality	Stamp
代庆蓉	龙超群	傅梁成	曹光平	

Customer approval:

Project confirmation	Project approval	Quality confirmation	Quality approval	Confirmation date

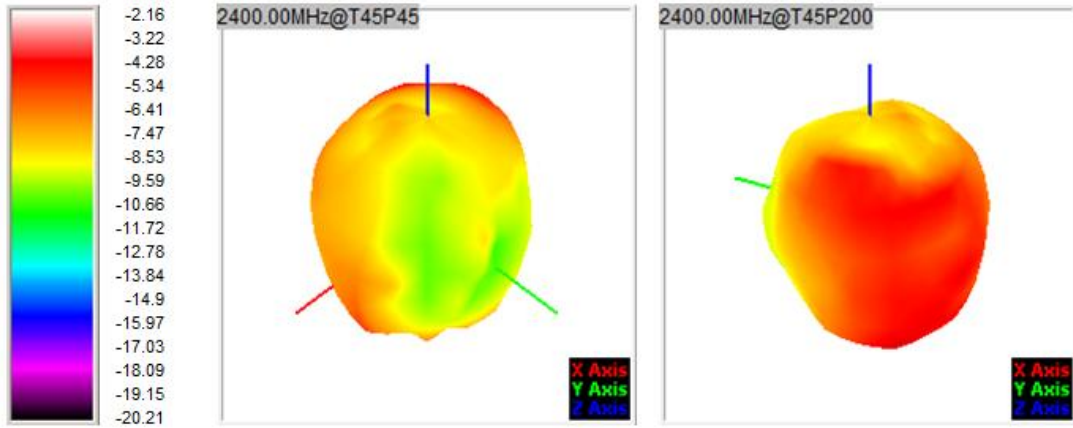
1. Graphic for reference

Name	ANTENNA ONE
Model	LT1
Frequency	2.45Ghz
Input impedance	50Ω
Allowed power	5W
Working temp.	-25 ~ +65 °C
Storage temp.	-40 ~ +85 °C
Antenna gain 天线增益	-1dBi
Modulation	GFSK
Operating Voltage Range	DC3.6~4.4V

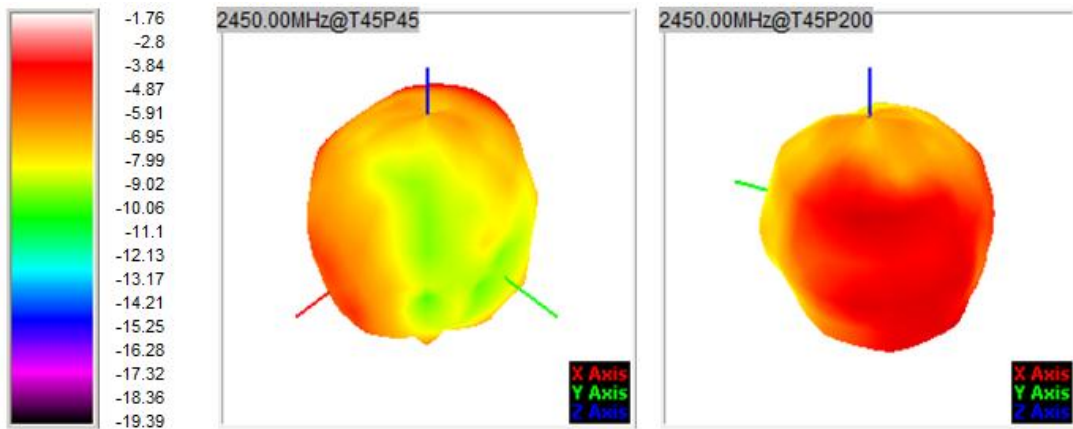
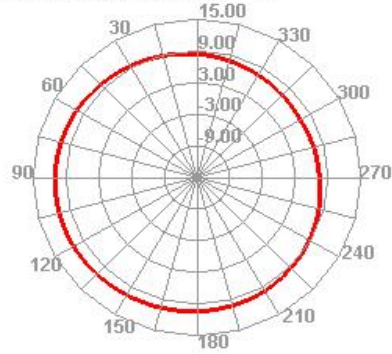
2. OTA(Free Space)

Channel	TRP (dBm)	TIS (dBm)
0	6.3	-91.1
39	6.5	-91.3
78	6.6	-91.2

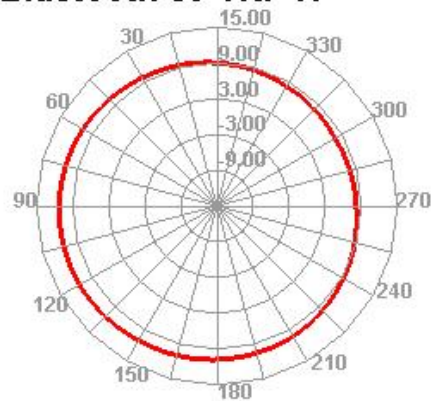
3. Field

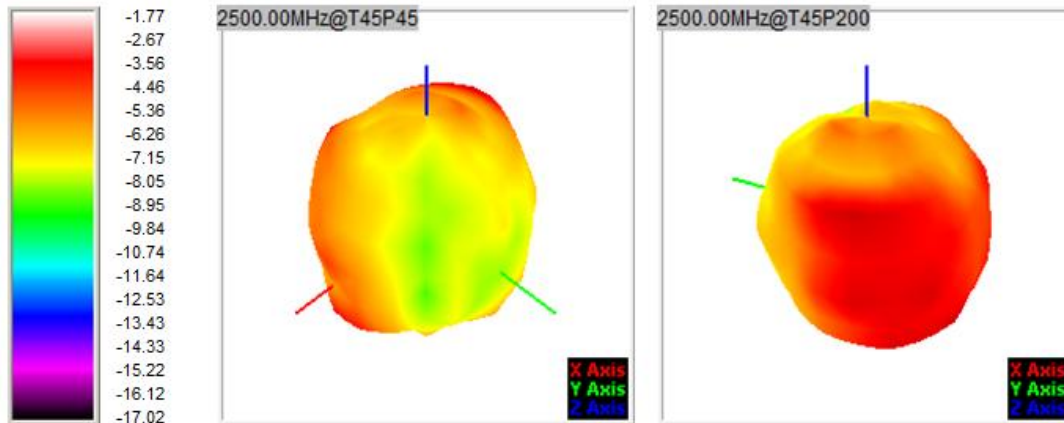


Bluetooth 0 TRP H

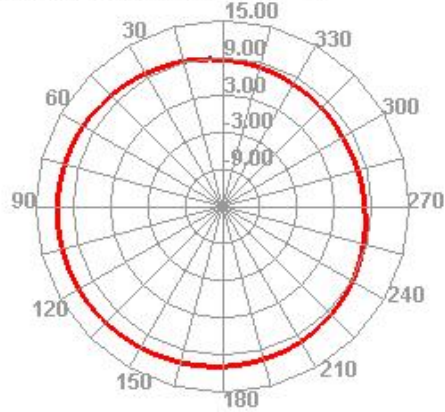


Bluetooth 39 TRP H





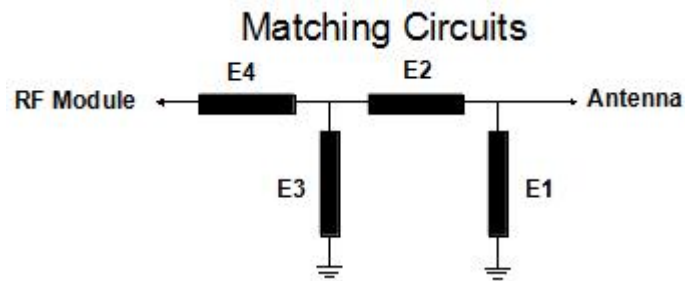
Bluetooth 78 TRP H



4. BT Test

Test term	Environment	Max pairing distance	BT Call distance	
BT	Office	16-18m	10-12m	

5. Blueprint

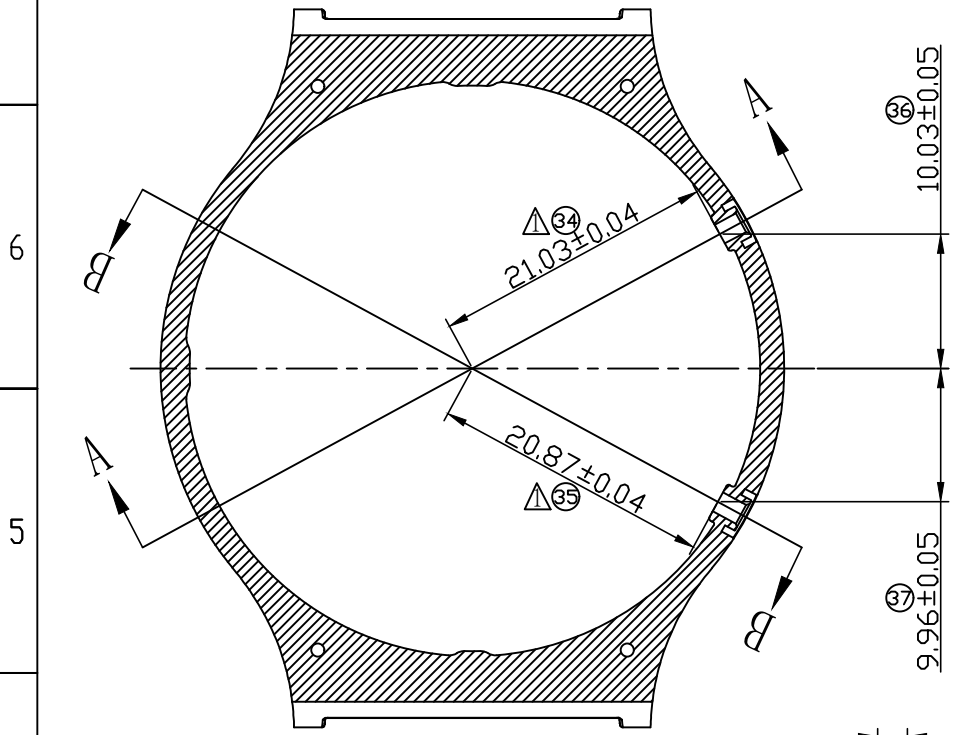


E4=NC	E3=NC	E2=0 欧姆	E1=NC
-------	-------	---------	-------

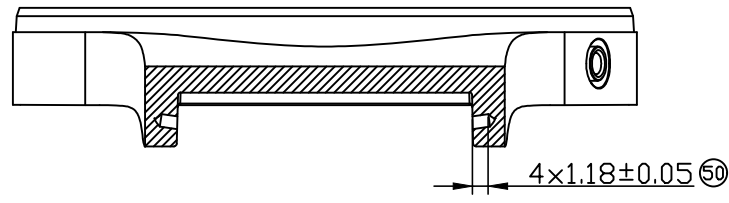
ROHS

(按键与天线区)

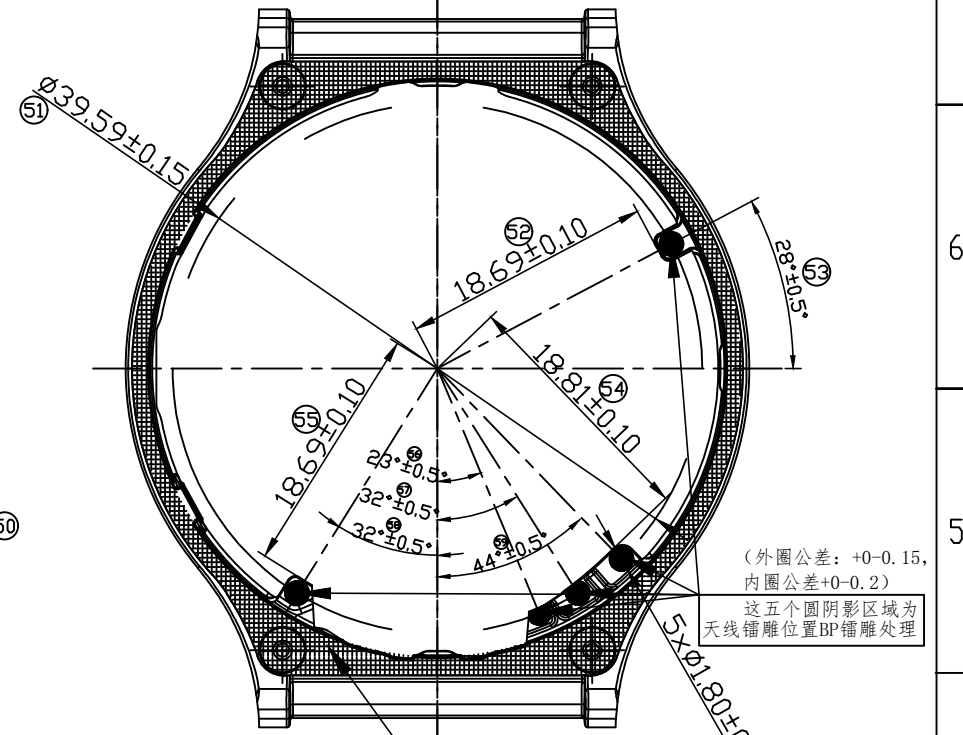
版本	标记	处数	变更内容	签名	日期
A0	△	—	初版发行	黄国庆	23-04-27
A1	△	6	更新几个非必测尺寸、更新公差	黄国庆	23-07-18



按键中心俯视截面 D-D

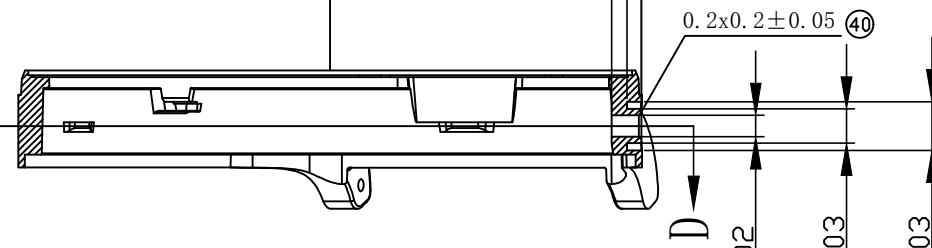


表带挂孔截面 C-C

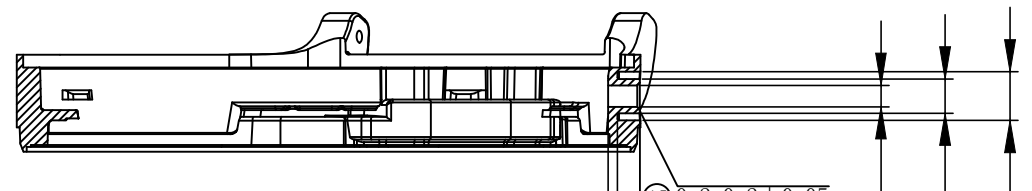


蓝色阴影区域贴胶位置需做BP镭雕处理
(外圈公差: +0-0.15, 内圈公差+0-0.2)

(外圈公差: +0-0.15, 内圈公差+0-0.2)
这五个圆阴影区域为
天线锚雕位置BP镭雕处理



旋钮按键截面 A-A



功能按键截面 B-B

#41、#46两个按键 ϕ 1.6的防水孔不可拔模, 孔壁光洁度A2级

技术要求:

1. 材料: 锌合金;
2. 产品颜色: 表面PVD 镀色哑光+C角边高光(参考D色板);
3. 表面处理及工艺: CNC+ 喷砂+PVD+ TP&BP 面与天线接触点局部镭雕;
4. 所有外观面不得有缩水痕, 有批锋, 水口印, 顶针印, 气纹, 脱伤等不良;
5. 水口残留不超出所在平面, 分模线段差不超过0.05MM, 点胶面达因值 ≥ 32 A; dyn (前后侧胶水槽不可飞油), 要求平面度控制在0.10mm, 外形轮廓变形度控制0.1MM以内;
6. 尖角部分允许最大圆角不超过0.10MM;
7. 带“*”号尺寸需首件重点管控, 带 需要做CPK管控;
8. 认证需求: 盐雾24H, 人工汗24H, ROHS2.0, Reach;
9. 未注尺寸参考3D和图框下边公差表, 外观参考工程确认样板;
10. 所有可靠性测试要求, 按企标标准, 螺丝柱锁机牙, 保证“五进五出”测试, 无滑牙、爆裂等不良现象出现, 扭力 0.52 ± 0.05 kgf.

GENERAL TOLERANCE TABLE			
LINEAR/Ø		ANGULAR	
DIVISION	TOLERANCE	DIVISION	TOLERANCE
0 ~ 10	±0.05	0° ~ 30°	±1.5
10 ~ 24	±0.07	30° ~ 90°	±2.5
24 ~ 50	±0.1		
50 ~ 80	±0.13		
over 80	±0.2		

镀涂	PVD参考ID色板			
库觅科技有限公司				
幅面	版本号	用量	比例	KUMI GT5 Pro+-中框
A4	A1	1	1:1	
设计		第 2 张		12.002.0002.01010
审核		共 2 张		
工艺		KUMI		