

保密等级：机密

Antenna SPEC

天线规格书

Model 型号: ANT-
WIFI-63-S-VC

Number 文档编码:

Approved by ShiKun		
Checked by 审核	Rechecked by 复审	Approved by 批准

Please send the original back to us after you have approved and signed.

客户承认签章后敬请寄回正本一份。

Approved by customer		
Comments 确认意见	Approved by 批准签字	Company's seal 盖章
Customer's Name:		

REVISION HISTORY (版本)

VERSION	DATE	AUTHOR	DESCRIPTION
V1.0	2023.07.16	Penghechang	First issue. 初始版本

Content (目录)

Table of Contents

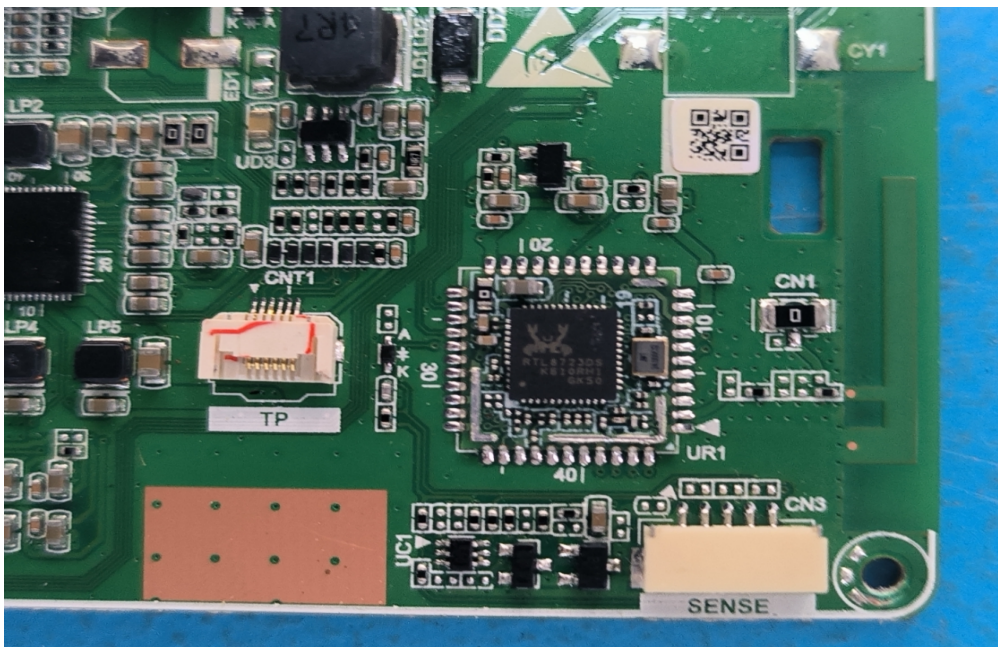
1 INTRODUCTION	1
1.1 TEST SAMPLES INFORMATION.....	1
1.2 TEST EQUIPMENT INFORMATION	1
2 TEST & RESULT	2
2.1 RETURN LOSS.....	2
2.2 EFFICIENCY AND GAIN	3

1 Introduction

This document describes the design verification tests. During the verification tests, the revision of deviations applied to and the serial number of the boards to be tested, and the diagnostic/SW version to be run on the boards will be logged. It describes the hardware RF design test data for RTL8723DS Module used in Dark Chocolate. Included are statements of test purpose, test methodologies, test modes and parameters, environmental conditions, applicable specifications, and typical reference design performance. The test samples were placed in the enclosure during the test Working frequency range : 2400-2500MHz

1.1 Test samples information

- Samples: 1pcs PCB board

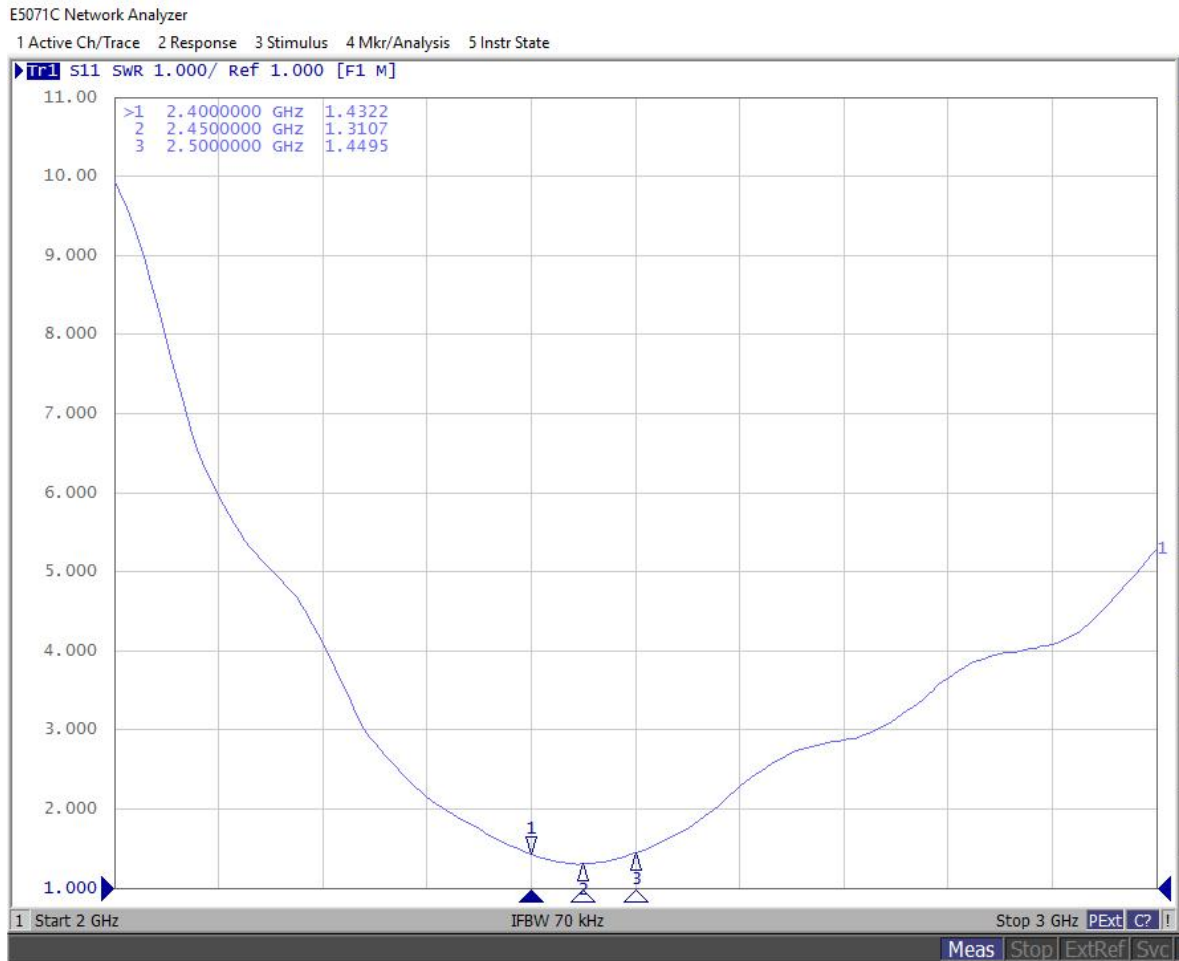


1.2 Test equipment information

- Satimo chamber
- Network analyzer

2 Test & Result

2.1 VSWR



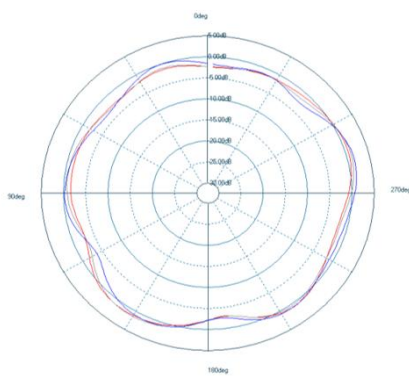
QR-ZZPJ-017A

2.2 Efficiency and Gain

Antenna max gain is 2.34dB for 2.4G

Frequency	Efficiency	Efficiency . dB	Gain . dB
2400MHz	66%	-1.78	2.32
2410MHz	67%	-1.76	2.06
2420MHz	68%	-1.65	2.07
2430MHz	72%	-1.44	2.14
2440MHz	71%	-1.51	2.50
2450MHz	69%	-1.62	1.94
2460MHz	66%	-1.83	1.93
2470MHz	67%	-1.74	1.82
2480MHz	68%	-1.67	1.82
2490MHz	66%	-1.80	1.79
2500MHz	67%	-1.72	2.34

xoy



yoZ

