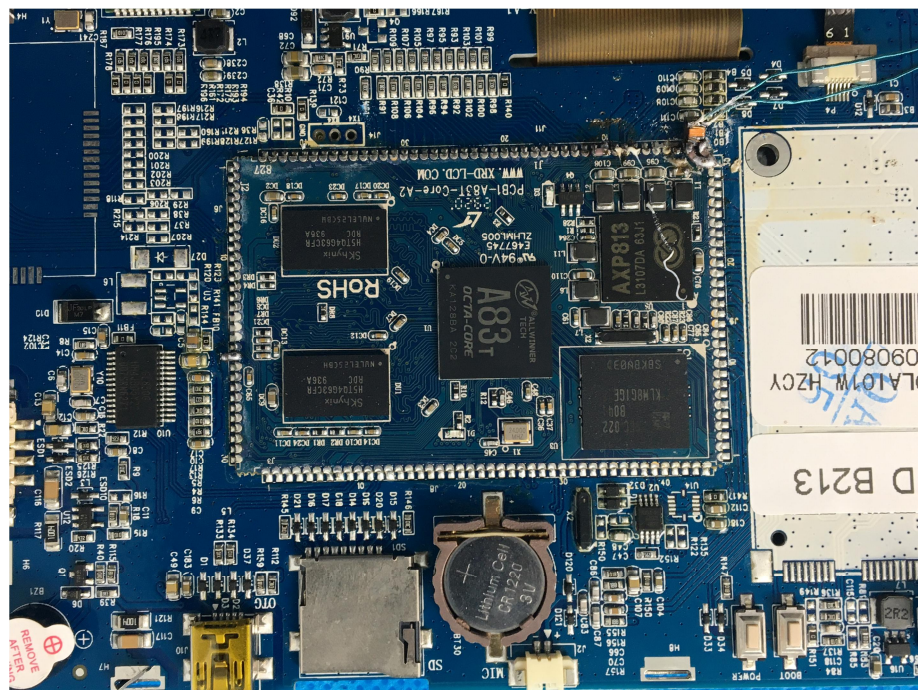
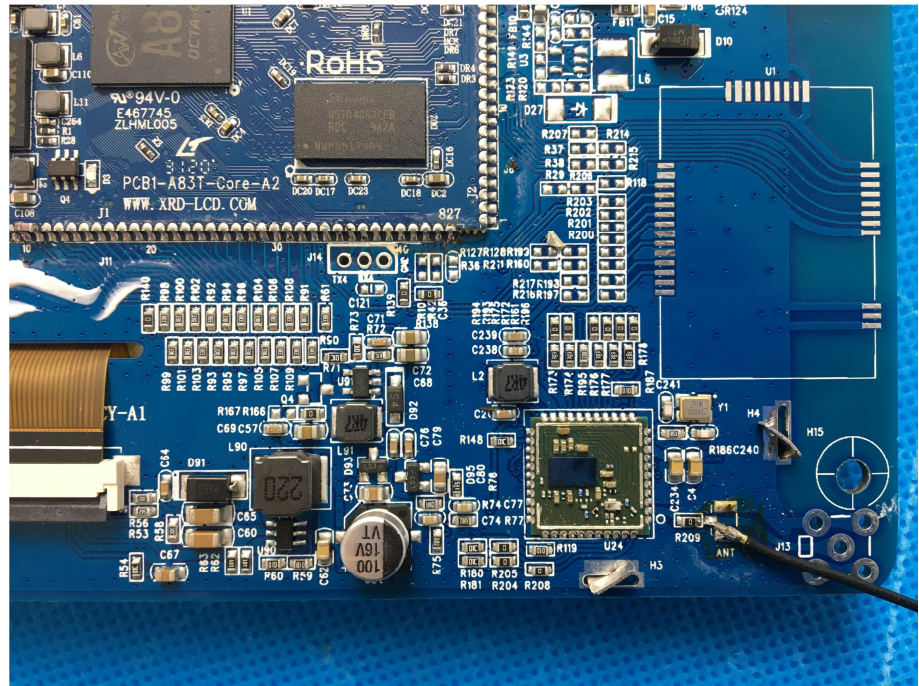
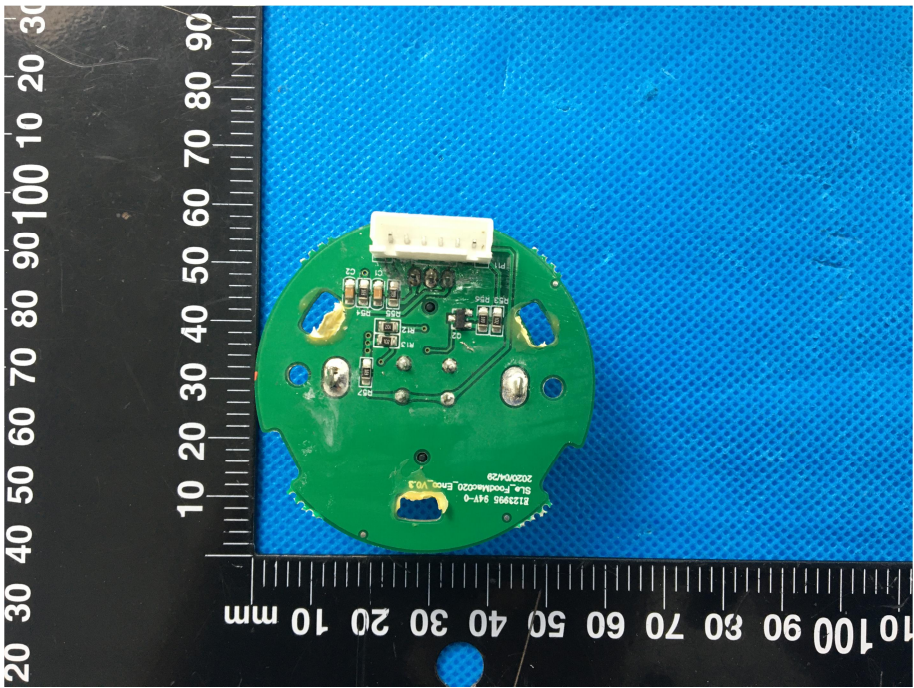
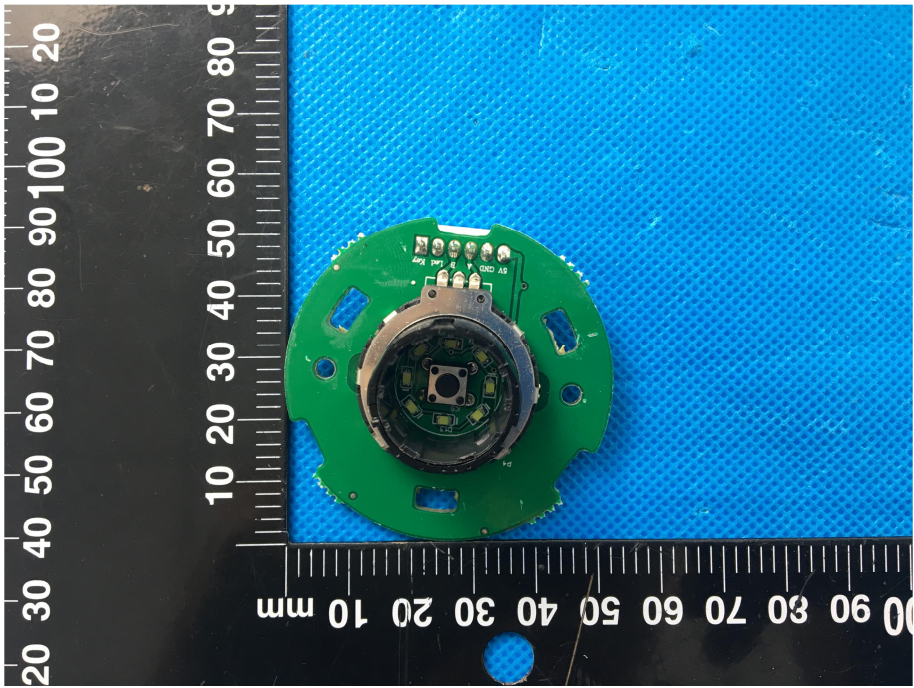


Solder  
Board-Component View  
4



Solder  
Board-Component View  
5



<p style="text-align: center;"><b>Solder Board-Component View 6</b></p>	 <p>A photograph of a green circular printed circuit board (PCB) component. The board is mounted on a blue textured surface. A white multi-pin connector is attached to the top edge. Various electronic components, including resistors and integrated circuits, are visible on the board. A black ruler with white markings is placed to the left and bottom of the component for scale. The ruler shows measurements in millimeters, with markings every 10 units and sub-markings every 1 unit. The component's diameter is approximately 60 mm.</p>
<p style="text-align: center;"><b>Solder Board-Component View 7</b></p>	 <p>A photograph of the same green circular PCB component from a different perspective. This view shows the underside of the board, where a central circular metal component is visible. The board is mounted on a blue textured surface. A black ruler with white markings is placed to the left and bottom of the component for scale. The ruler shows measurements in millimeters, with markings every 10 units and sub-markings every 1 unit. The component's diameter is approximately 60 mm.</p>

**Antenna View**

