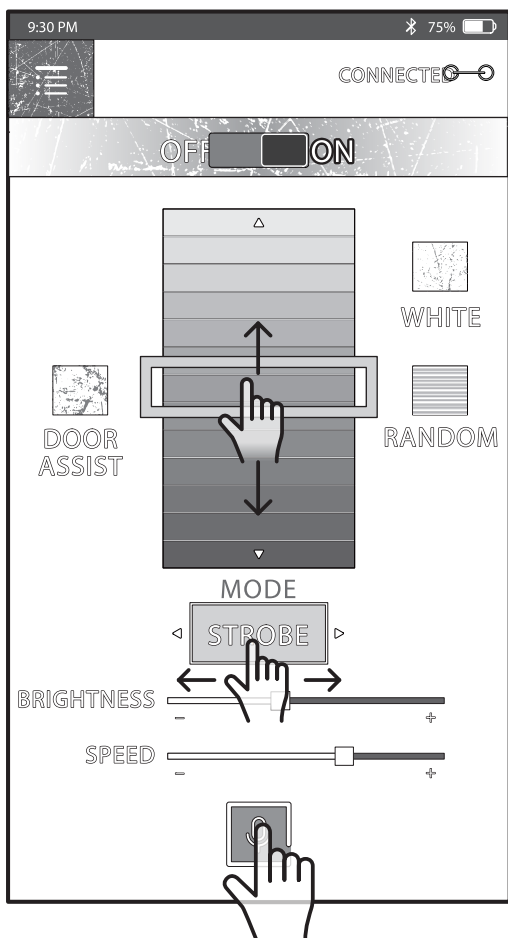


STEP 3 APP CONTROL

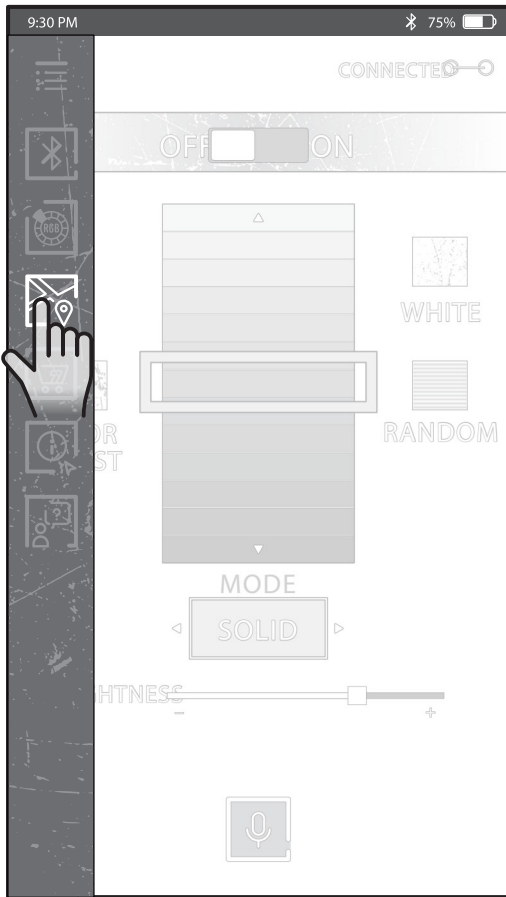
Slide "ON/OFF" bar to the right to turn on the lights.



STEP 4 COLOR AND STYLE SELECTION

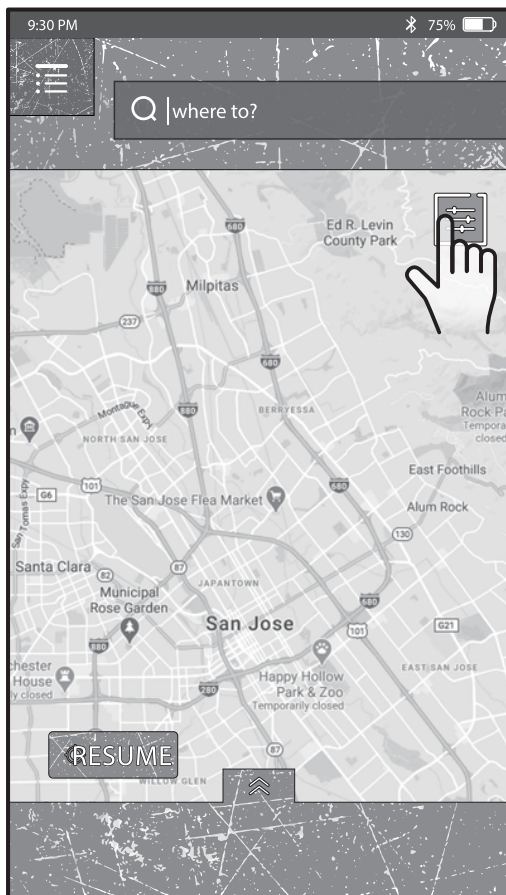
Start picking colors and styles you like.

- 1 By Scroll Color bar and swipe Style Mode
- 2 By voice control



STEP 5 NAVIGATION MODE

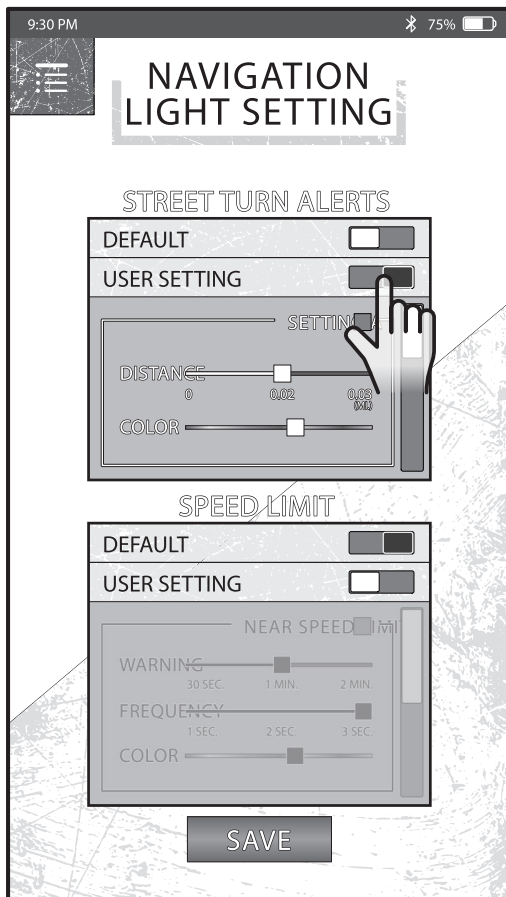
Tap "Navigation". Then, you will be directed to the map screen.



STEP 6 NAVIGATION LIGHT SETTINGS

Tap "Light Settings" to create a custom settings for turn signals and speed limits alerts.

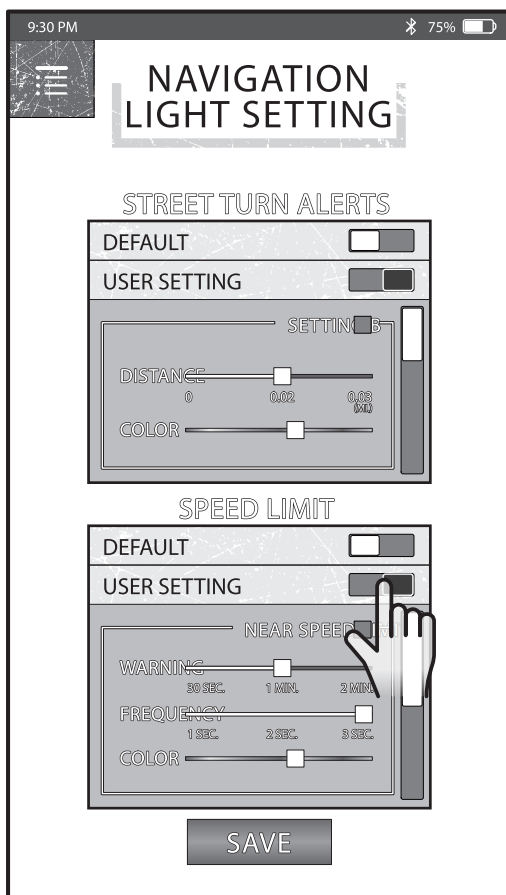
* If you choose "default mode", you can skip steps 6,7,8 and go directly to step 9



STEP 7 STREET TURN ALERTS SETTING

Tap "User Setting" to create your own DISTANCES AND COLORS.

*Scroll down for up to 3 settings selections.



STEP 8 SPEED LIMIT SETTING

Tap "User Setting" to create your own WARNING, FREQUENCY, AND COLORS.

*Scroll down to view up to 2 settings.

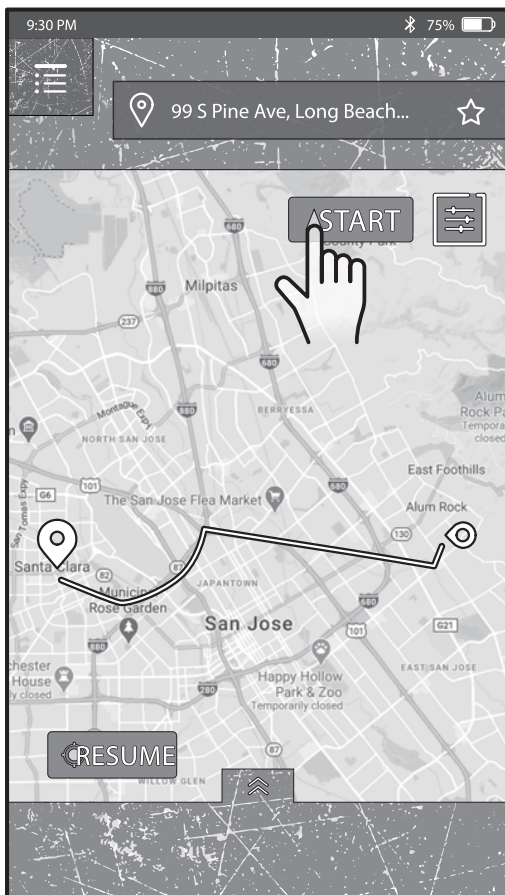
When you are finished, tap "Save". It will take you back to the map screen.



STEP 9 FIND YOUR TRIPS

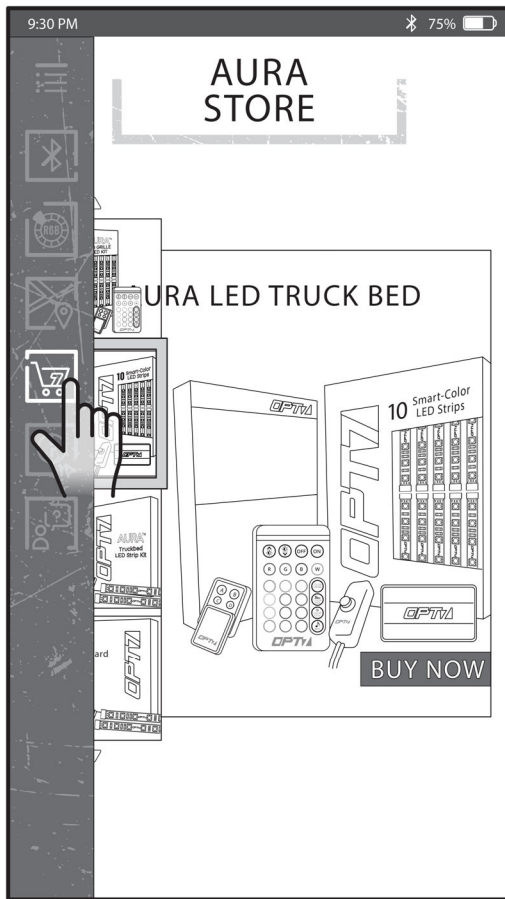
There are 2 ways to input your destination.

- 1 Tap "Search Bar" to enter the full address (*or choose from your favorites.)
- 2 Zoom in to find your desired location. Press and hold to pin a spot on the map to set it up.



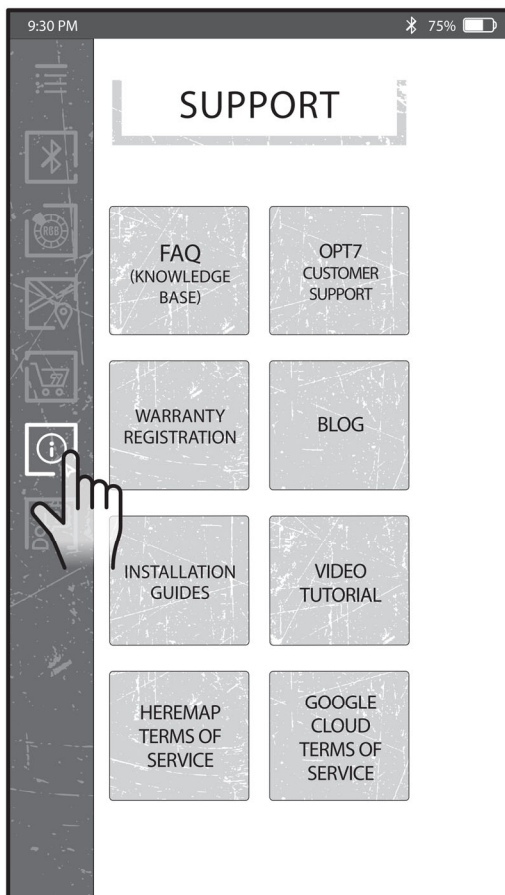
STEP 10 START NAVIGATION

Once you have entered the destination address, the map will show you the best route. Then, tap "Start" to activate the map navigation.



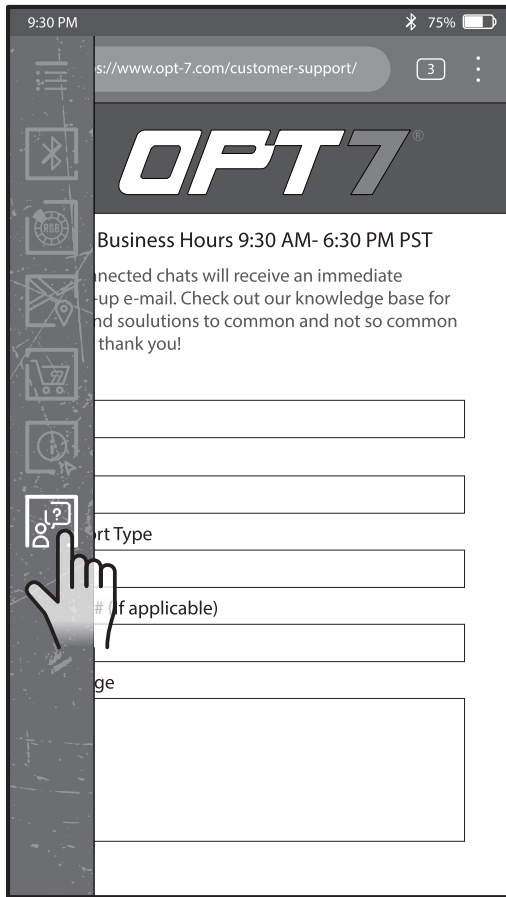
STORE MODE

Tap "Store" to go to OPT7 Store to shop OPT7/AURA products.



OPT7 SUPPORT

Tap "OPT7 SUPPORT" to find OPT7 Support, Knowledge Base, Install Guides and videos...etc.



CUSTOMER SERVICE

Tap "LIVE CHAT" to chat with our customer service.

FCC Warning:

This equipment has been tested and found to comply with the limits for a Class B digital device, pursuant

to part 15 of the FCC Rules. These limits are designed to provide reasonable protection against harmful interference in a residential installation. This equipment generates, uses and can radiate radio frequency energy and, if not installed and used in accordance with the instructions, may cause harmful interference to radio communications. However, there is no guarantee that interference will not occur in a particular installation. If this equipment does cause harmful interference to radio or television reception, which can be determined by turning the equipment off and on, the user is encouraged to try to correct the interference by one or more of the following measures:

- Reorient or relocate the receiving antenna.
- Increase the separation between the equipment and receiver.
- Connect the equipment into an outlet on a circuit different from that to which the receiver is connected.
- Consult the dealer or an experienced radio/TV technician for help.

Caution: Any changes or modifications to this device not explicitly approved by manufacturer could void your authority to operate this equipment.

This device complies with part 15 of the FCC Rules. Operation is subject to the following two conditions:

(1) This device may not cause harmful interference, and (2) this device must accept any interference received, including interference that may cause undesired operation.

This equipment complies with FCC radiation exposure limits set forth for an uncontrolled environment. This equipment should be installed and operated with minimum distance 20cm between the radiator and your body.