

GETTING STARTED WITH

***OPT7***<sup>®</sup>

**CONNECT**

We provide a free APP for you to download to your smartphone.

The following guide, you will be able to fully experience the application of these features.

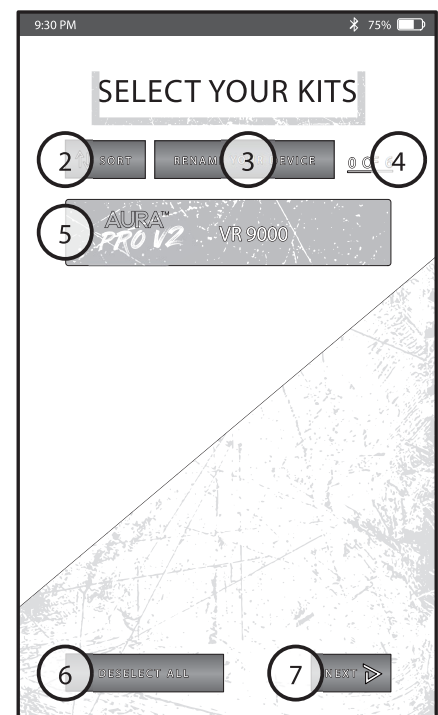
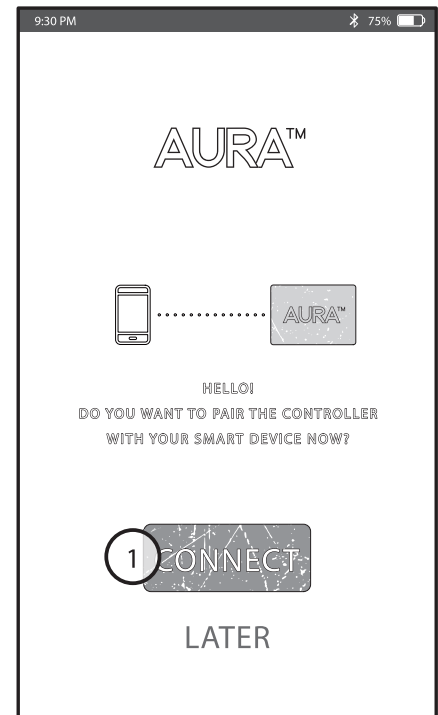
Now let's get started....

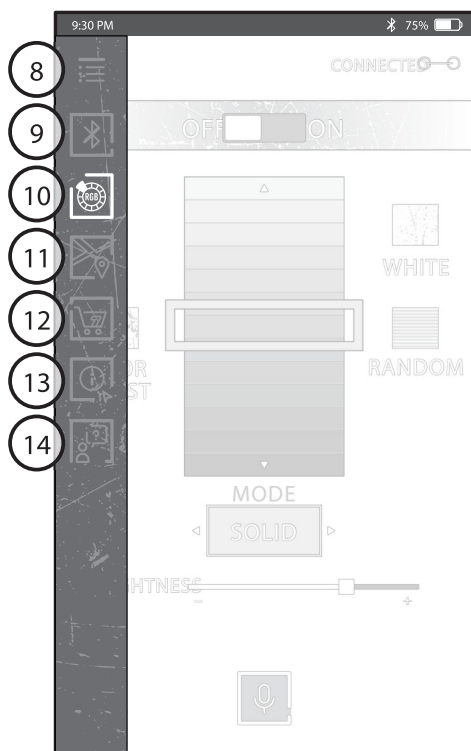
PLEASE READ THIS INSTRUCTION MANUAL CAREFULLY BEFORE USING THIS

## USER INTERFACE OVERVIEW

You can confirm the main elements of the user interface with the following illustrations.

- 1 CONNECT**  
Scan all available devices.
- 2 SORT**  
Rescan all devices.
- 3 RENAME YOUR DEVICE**  
Modify the naming of connected devices.
- 4 0 OF 6**  
Number of currently connected devices.
- 5 PRODUCT MODEL**  
Device name.
- 6 DESELECT ALL**  
Clear all connected devices.
- 7 NEXT**  
Proceed to the next page.





## 8 MAIN MENU

Main function list

## 9 DEVICE CONNECTION

## 10 COLOR PALETTE

## 11 NAVIGATION

## 12 AURA STORE

## 13 OPT7 SUPPORT

## 14 LIVE CHAT

## 15 ON/OFF

Turn ON/OFF the lights

## 16 DOOR ASSIST

Only supports "Solid" color setting

## 17 COLOR PICKER

Supports 64 color mode

## 18 WHITE

Switch to white light mode

## 19 RANDOM

Random color generator

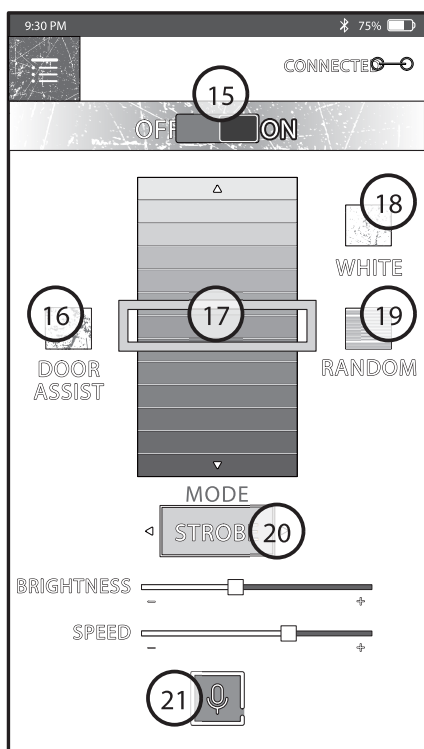
## 20 STYLE MODE

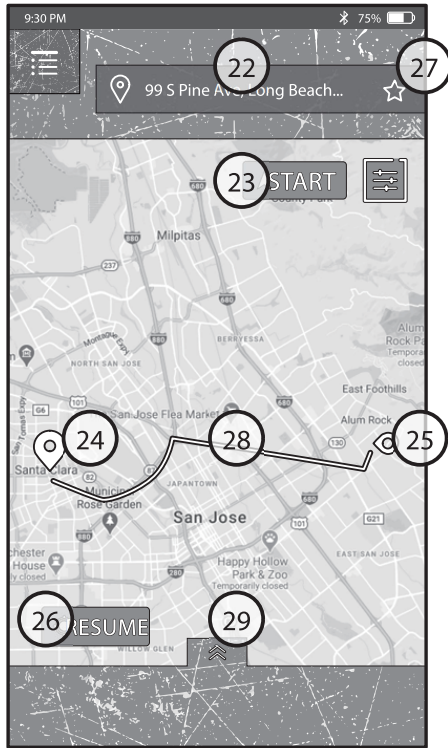
Swipe ScrollWheel horizontally to set the desired mode.

- Solid          Adjustable Brightness
- Strobe        Adjustable Brightness/ Speed
- Color fade    Adjustable Speed
- Cycle         Adjustable Brightness/Speed
- Sound SYNC Adjustable Sensitivity

## 21 VOICE CONTROL

See note 1 below





22 SEARCH BAR

Enter your destination

23 START

Start a route to any destination

24 DESTINATION

25 START POINT

26 RESUME

Resume your location

27 RECORD & DELETE

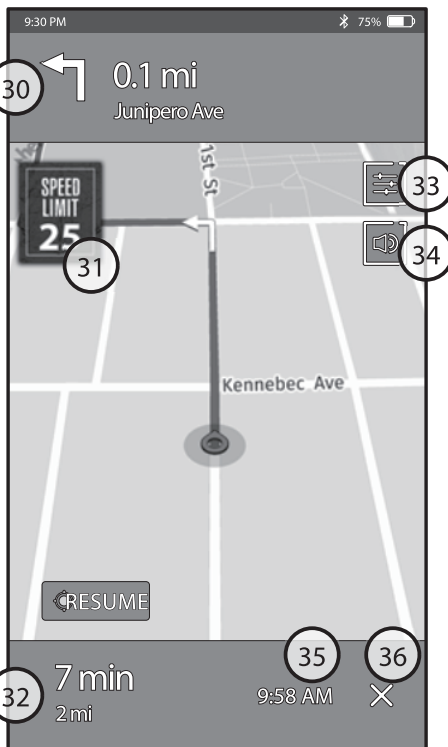
x Delete

☆ Add a place to your favorite

★ Favorite place

28 TURN-BY-TURN NAVIGATION

29 RECENT & FAVORITE



30 ROUTE DISPLAY

31 SPEED LIMIT

32 TRAVEL TIME & DISTANCE

33 LIGHT SETTINGS

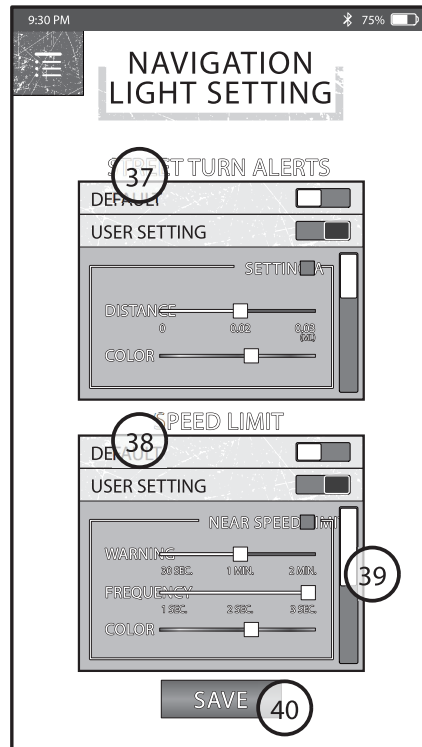
34 SOUND

Turn ON/OFF voice guidance

35 ETA

Estimated time of arrival

36 CONTINUE & STOP NAVIGATION



### 37 STREET TURN ALERTS

There are two options to set the feature

- **DEFAULT / USER SETTING**

When the slider lights up in “Red”, this setting will be enabled.

- **DISTANCE** To adjust the turn alerts level
- **COLOR** Select your favorite as a reminder

### 38 SPEED LIMIT

There are two options to set the feature

- **DEFAULT / USER SETTING**

When the slider lights up in “Red”, this setting will be enabled.

- **WARNING** Adjustable reminder time
- **FREQUENCY** Adjustable flash level
- **COLOR** Select your favorite as a reminder

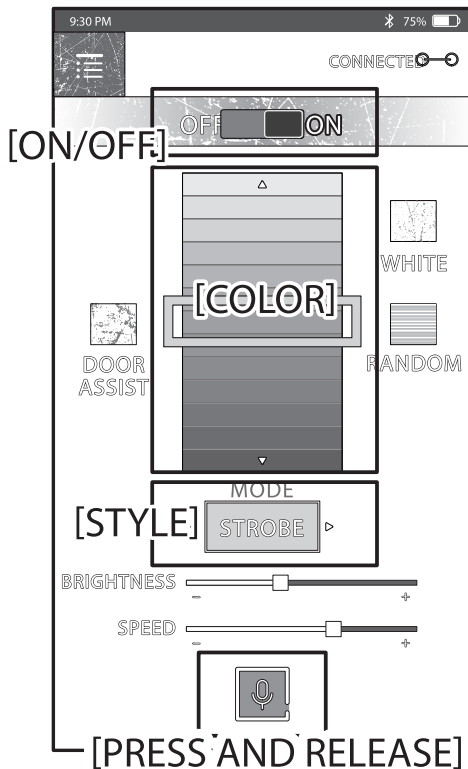
### 39 SCROLLBAR

### 40 SAVE

# NOTE 1: HOW TO USE VOICE TO CONTROL YOUR LIGHTS?

First, you need to activate the microphone icon , and then immediately make your request. A list of them follows below.

Press the microphone button and say one of the following commands:



## [ON/OFF]

Specifies an action as a command. Example "Turn ON The Light".

## [STYLE]

Specifies a style as a change command. Example "Change To Strobe".

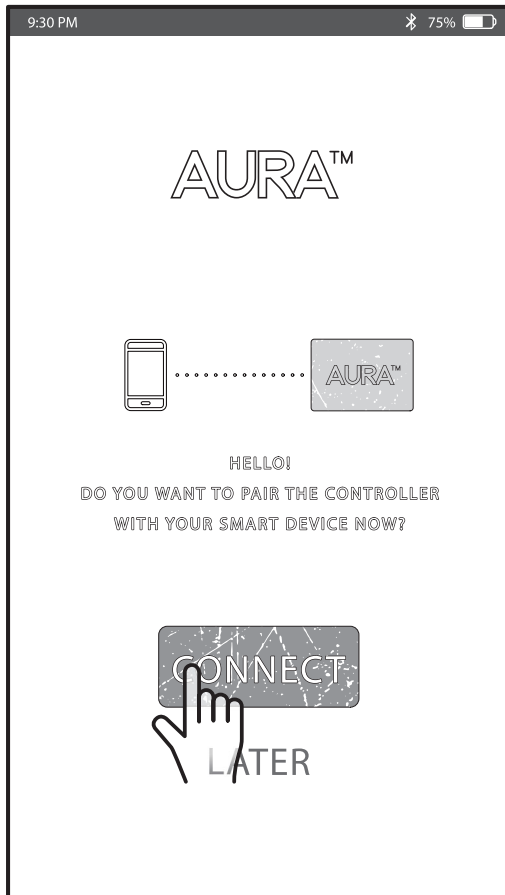
## [COLOR]

Specifies a color as a change command. It must contain the keywords "Change color and Color name". Example "Change Color To Blue".

### IMPORTANT:

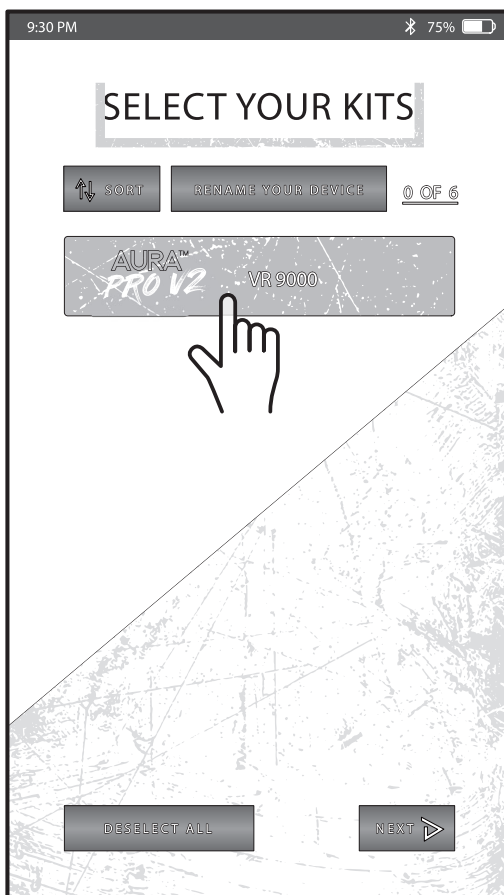
To make it easier for the voice control to recognize your phrase/word as a command, please try to use it in an environment with less background noise interference.

NO#	Color#	NO#	Color#	NO#	Color#
#1	Red	#12	Light Sea Green	#23	Purple
#2	Orange Red	#13	Teal	#24	Violet
#3	Dark Orange	#14	Aqua	#25	Magenta
#4	Orange	#15	Aqua Marine	#26	Orchid
#5	Gold	#16	Deep Sky Blue	#27	Medium Violet Red
#6	Yellow	#17	Sky Blue	#28	Deep Pink
#7	Lawn Green	#18	Blue	#29	Hot Pink
#8	Yellow Green	#19	Royal Blue	#30	Fuchsia
#9	Green	#20	Medium Purple	#31	Pink
#10	Spring Green	#21	Dark Magenta	#32	White
#11	Sea Green	#22	Medium Orchid		



## STEP 1 SCANNING DEVICE

Open the APP and tap "CONNECT".  
Next ,you will be directed to the main page for the Bluetooth pairing of the device.



## STEP 2 ADD DEVICE

Tap "Device" to pair and connect.  
Once connected, tap "NEXT" to access the menu.