

Jiangsu Yuyue Medical Equipment & Supply Co., Ltd.

Current Date 07/07/2021

To: **SGS-CSTC Standards Technical Services (Shanghai) Co., Ltd.**
No. 588 West Jindu Road, Songjiang District, Shanghai, China. 201612

Dear Sir/Madam,

Subject: **Declaration Letter about Identity of Products**

*WE Jiangsu Yuyue Medical Equipment & Supply Co., Ltd. HEREBY DECLARED THAT

Our product:

| | |
|----------------------|-----------------------------------|
| Product Description: | Electronic Blood Pressure Monitor |
|----------------------|-----------------------------------|

And the models below :

| | |
|-------------------------|---|
| Model No.: | W10T |
| Manufacturer's Name: | Jiangsu Yuyue Medical Equipment & Supply Co., Ltd. |
| Manufacturer's Address: | No.1 Baisheng Road Development Zone, Danyang , Jiangsu province,China |

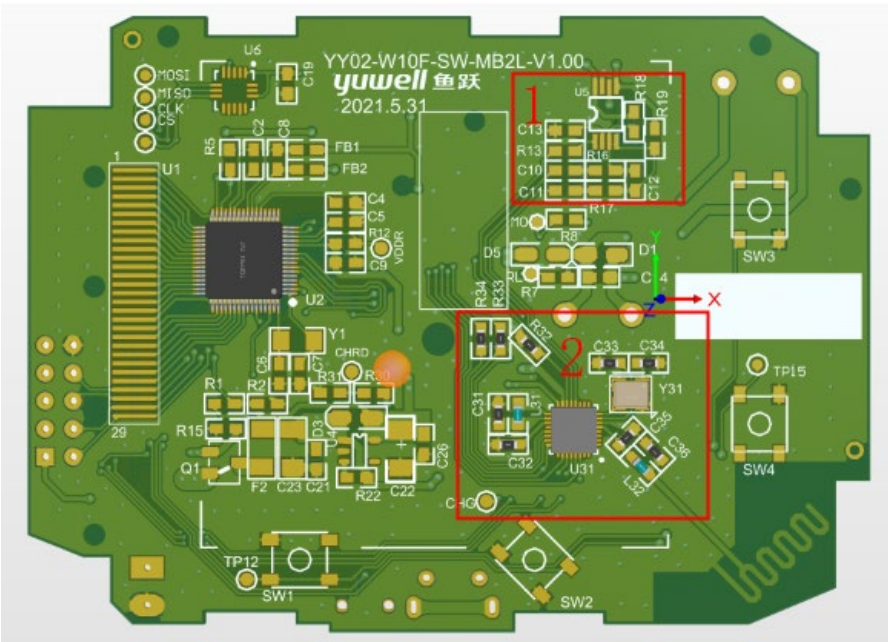
with the model(s) below which samples we chose to be tested by SGS

| | |
|-------------------------|---|
| Model No.: | W10F |
| Manufacturer's Name: | Jiangsu Yuyue Medical Equipment & Supply Co., Ltd. |
| Manufacturer's Address: | No.1 Baisheng Road Development Zone, Danyang , Jiangsu province,China |

Pls explain the difference between the add models and the model for testing concretely.

Model W10F and W10T have the same essential design and manufacturing characteristics. They share a PCB board, and the only difference is that W10F has voice function, while W10T has no voice function.

As shown in the figure below, the layout and component design of bluetooth module for model W10F and W10T are shown in Box 2 .This module integrates bluetooth communication, voice code storage and charging management. Since model W10T model has no voice function, the power amplifier module shown in Box 1 does not attach components.



Sincerely,

| | |
|------------------|--------------------|
| Signature: | <i>Caixia Yang</i> |
| Printed Name : | Caixia Yang |
| Position/Title : | RA Specialist |
| Contact Number: | +86 18252963550 |