




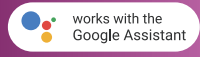


# Smart LED Ceiling Light

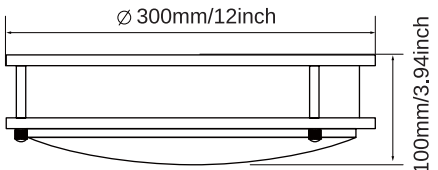
Bluetooth      WiFi Control



NOTE: Only Supports 2.4 GHz WiFi Network

Model: ZL-CWB20-RGBCW-9XDR-12



### Technical Details

|                   |                      |
|-------------------|----------------------|
| Voltage           | 120V                 |
| Wattage           | 22W                  |
| Material          | Aluminum & PC & Iron |
| Color             | Brushed Nickel       |
| Number of LED     | 48 pcs               |
| Brightness        | 2200 Lumens          |
| Color Temperature | 2700K-6500K+RGB      |
| Beam Angle        | 160 Degree           |
| CRI(Ra)           | 90+                  |
| Lifespan          | 25000+ Hours         |
| Dimmable          | Yes                  |

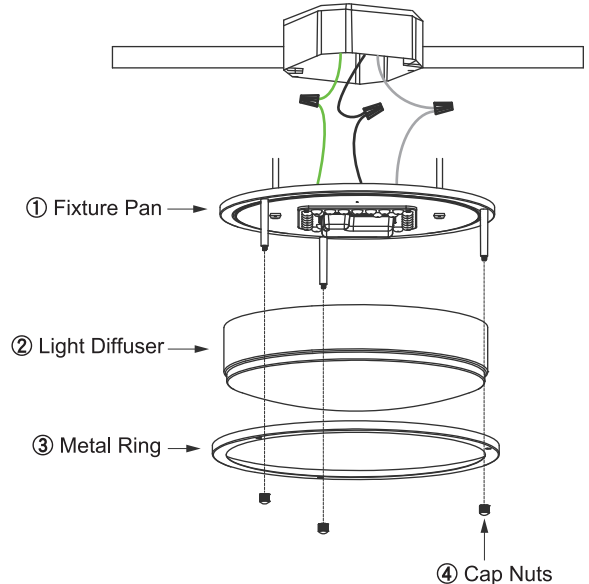
### Package Types

| 1-Pack Includes       | 2-Pack Includes       |
|-----------------------|-----------------------|
| 1 x LED Ceiling Light | 2 x LED Ceiling Light |
| 1 x Tool Kits         | 2 x Tool Kits         |
| 1 x User Manual       | 1 x User Manual       |

1

### Installation Procedure

1. Unscrew the 3 cap nuts from the metal ring, to separate the metal ring and the light diffuser from the fixture pan.
2. Connect wires correctly and attach the fixture pan to the ceiling by the screws.
3. Attach the light diffuser and metal ring back to the fixture pan by tightening the 3 cap nuts back.



2

## Note

1. Cut off power before installing or cleaning the light.
2. These ceiling lights are NOT waterproof.
3. Do not put the lights in the overheating working condition or cast it into fire.
4. Do not retrofit the product for warranty claim.

## After-sales Service Guarantee

2-Year warranty is provided for the product from the date of purchase. If you have any queries, please sign in to Amazon and contact us, or Email us via [Maylaywood@outlook.com](mailto:Maylaywood@outlook.com).

Note: An order ID with detail description or image is preferred when contacting our customer service, if possible.

## Warranty

1. During the warranty period, we provide service including refund or replacement without charging those who use the product in accordance with the user manual.
2. This warranty does not cover:
  - (A) Failure or damage due to the improper use, repair or remodeling.
  - (B) Failure or damage because of failing.
  - (C) Failure or damage caused by fire, earthquake, flood, lightning and other natural disasters.
  - (D) Failure or damage when used other than its intended use.
  - (E) Failure or damage caused by the third-party products other than this product.

3

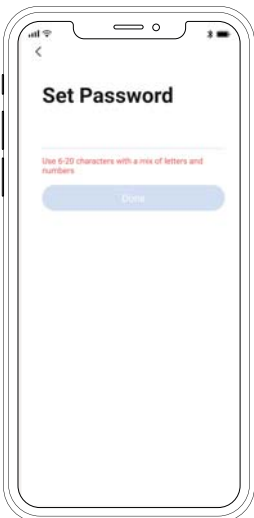
**Step 1: Search and download 'Smart Life' from App Store or Google play. Or scan the QR code below to download.**



4

## Step 2: Register

1. Make sure your WiFi network is 2.4 GHz and connected. Create a new account on Smart Life APP and log in.
2. Please enable the Smart Life APP to get your Bluetooth while using it.



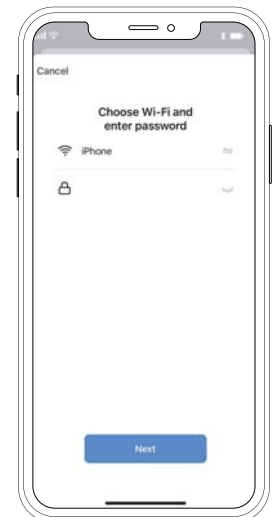
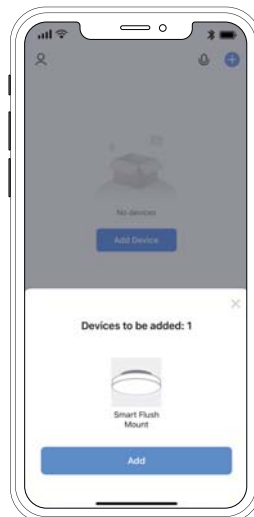
**Step 3: Power off 10s, then power on, turn on-off-on-off-on (on/off for 3 times) until the light rapidly blinks.**

5

## Step 4: Add Device

- ✓ Auto Scan or Add Manually
- ✓ Auto Scan

1. The device in the connecting state will be displayed "devices to be added".
2. Tap on "Add" and confirm your network again.



6

## Step 4: Add Device

### ▼Auto Scan

3. The light starts to connect until it displays 100% complete.



4. Tap on "Done" and now you can use Smart Life APP to control your ceiling light.



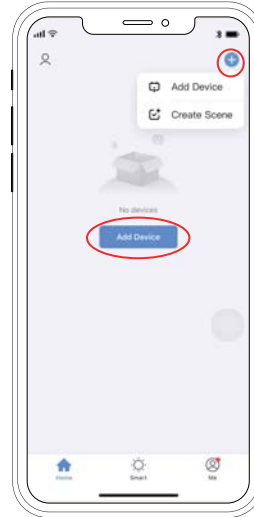
7

If your device can't be automatically discovered, you can add it manually.

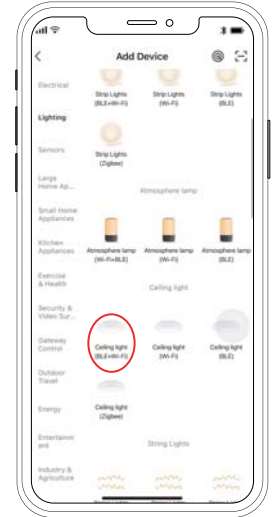
## Step 4: Add Device

### ▼Auto Scan or Add Manually ▼Add Manually

1. Tap on "Add Device".



2. Add "Ceiling Light (BLE+Wi-Fi)" device.

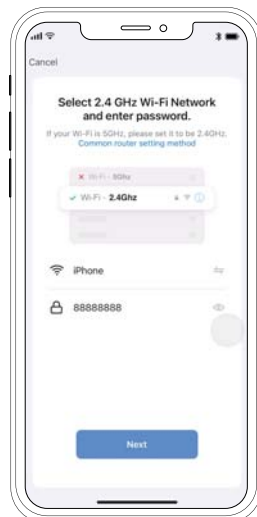
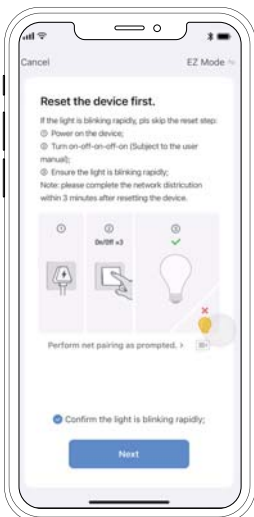


8

## Step 4: Add Device

### ▼Add Manually

3. Tap "Confirm the light is blinking rapidly" and Enter Wi-Fi Password  
Note: If the light is not blinking rapidly automatically, please reset the light with on-off-on-off-on again until blinks rapidly.



9

## Step 4: Add Device

### ▼Add Manually

4. The light starts to connect and wait for the completion of adding the device.



5. Tap on "Done" and now you can use Smart Life APP to control your ceiling light.



10

## Features

### Dimming

Slide the dimming bar up or down to set the brightness level from 100%-10%.

### Tunable White

Use the round slider to adjust color temperatures from 2700K to 6500K.

### Color Changing

Use the round slider to adjust the desired color.

Slide the brightness and saturation bar to adjust the color.



11

### Scenes

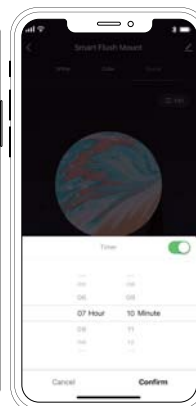
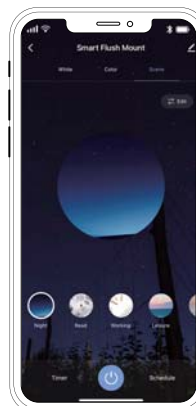
Tap on scene and choose your desired scenes from 8 default scenes.

### Timer

Use the timer to set your light to automatically turn on and off whenever you want.

### Schedule

Choose a start time to schedule to repeat, then tap Save.



Made in China

12

**FCC Warning Statement**

Changes or modifications not expressly approved by the party responsible for compliance could void the user's authority to operate the equipment. This equipment has been tested and found to comply with the limits for a Class B digital device, pursuant to Part 15 of the FCC Rules. These limits are designed to provide reasonable protection against harmful interference in a residential installation. This equipment generates uses and can radiate radio frequency energy and, if not installed and used in accordance with the instructions, may cause harmful interference to radio communications. However, there is no guarantee that interference will not occur in a particular installation. If this equipment does cause harmful interference to radio or television reception, which can be determined by turning the equipment off and on, the user is encouraged to try to correct the interference by one or more of the following measures:

- Reorient or relocate the receiving antenna.
- Increase the separation between the equipment and receiver.
- Connect the equipment into an outlet on a circuit different from that to which the receiver is connected.
- Consult the dealer or an experienced radio/TV technician for help.

**FCC Radiation Exposure Statement**

The antennas used for this transmitter must be installed to provide a separation distance of at least 20 cm from all persons and must not be co-located for operating in conjunction with any other antenna or transmitter.