



Thermal Label Printer

Quick Start Guide

CONTENTS

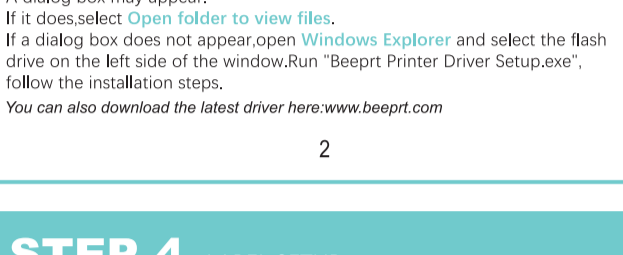
PRINTER SETUP	2
WINDOWS INSTALLATION	2
LABEL SETUP	4
MAINTENANCE & TIPS	5
LED LIGHT INDICATOR	6
IMPORTANT TIP	7
BLUETOOTH	8
MAC INSTALLATION	12



WARNING!
The Printer Head (PH) may be very hot. Do not touch internal parts of the Thermal printer immediately after using the printer.

1

STEP 1 PRINTER SETUP



STEP 2 DRIVER INSTALLATION FOR WINDOWS

Please insert the included USB into your computer. A dialog box may appear. If it does, select **Open folder to view files**. If a dialog box does not appear, open **Windows Explorer** and select the flash drive on the left side of the window. Run "Beepert Printer Driver Setup.exe", follow the installation steps. You can also download the latest driver here: www.beepert.com

2

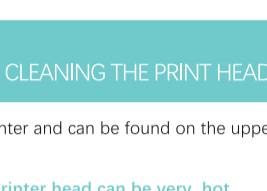
STEP 3 PRINTING SETUP

FOR WINDOWS

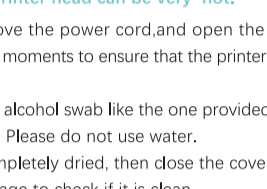
1. When installation finished, open your printer page by typing Control Panel and the search box on the taskbar. Click the Control Panel search result. In Control Panel, click **Hardware and Sound** then **Devices and Printers**. Right click on your newly installed BY-426 Label printer and choose **Printing preferences**.



2. Go to the **Page Setup** tab on the top of the dialog box; you can change setting of printer, like paper size, speed, darkness...



3. From the **Name** drop-down menu, select the size of your label. A 4"x6" label is approximately 100x150mm. Click **OK** to save your settings and continue to Step 4 on the reverse of this page.

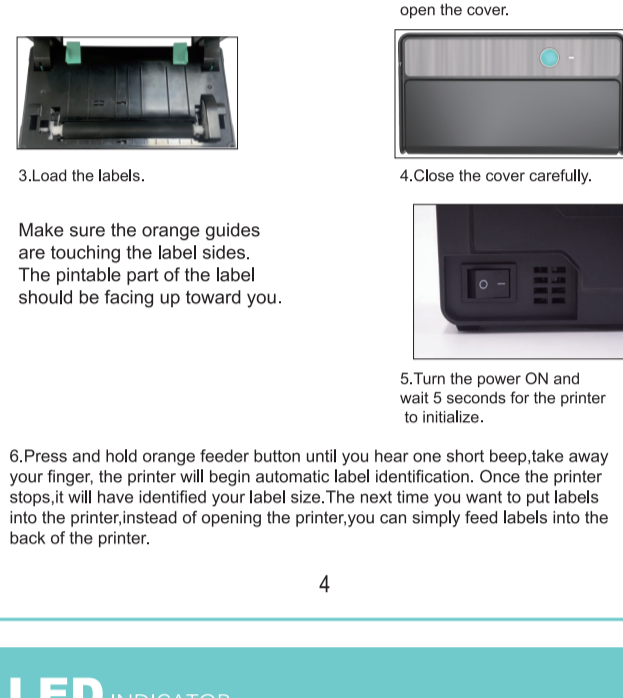


MAC PRINTING SETUP

For MacOS computers, please see "MAC PRINTING SETUP" on page 8 of these instructions.

3

STEP 4 LABEL SETUP



Make sure the orange guides are touching the label sides. The printable part of the label should be facing up toward you.

6. Press and hold orange feeder button until you hear one short beep, take away your finger, the printer will begin automatic label identification. Once the printer stops, it will have identified your label size. The next time you want to put labels into the printer instead of opening the printer, you can simply feed labels into the back of the printer.

4

MAINTENANCE CLEANING THE PRINT HEAD

The printer head is a sensitive part of the printer and can be found on the upper part of the printer when open.

Caution: While the printer is running the printer head can be very hot.

1. Ensure that the power switch is OFF, remove the power cord and open the cover as outlined above in step 4, wait several moments to ensure that the printer head cools down.

2. Completely clean the printer head using an alcohol swab like the one provided. Any 70% Isopropyl Alcohol pad would work. Please do not use water.

3. Wait 2-3 minutes until the alcohol has completely dried, then close the cover.

4. Connect the power cord and print a test page to check if it is clean.

PRO TIPS

- Anytime you'd like to change your label size, run the automatic label identification by pressing and holding the feeder button until you hear one short beep.

- Press the orange feeder button on the printer to skip a label.

- To run a self-test, press and hold the feeder button until you hear two short beeps.

- Avoid using poor quality labels as they can damage the printer.

- Regularly clean the printer head as outlined above under MAINTENANCE.

- If paper is jammed, turn off the printer and allow the printer head to cool down. Open the cover and ensure that the rubber is clean. If it is dirty, use alcohol pad to clean it. Allow the area to dry before turning the printer back on.

- Insert the printer's USB into the USB port on your computer every time you plug it in. This will avoid creating duplicate copies of the printer on your computer.

5

LED INDICATOR

COLOUR OR STATUS OF LED BUTTON	EXPLANATION	SOLUTION
Green	Printer is running normally	
Flashing Green	Printer Head is overheated	None. Printer will automatically resume once the printer head cools down.
Flashing Red (every 2 seconds)	1. Out of paper 2. Wrong size paper	Ensure that the labels are loaded correctly. See the identification (point 6 in step 4).
Flashing Red (2 times per second)	Printer cover is not fully closed	Check that the printer cover is completely closed.

PRINTER SPECS

Method	Direct Thermal
Resolution	203dpi
Max Printing Speed	150mm/s
Paper Width	48-108mm
Paper Thickness	0.08-0.2mm
Power Adapter	24V/2A
Printing Life	1PH 30 Km
Operating Temperature	-10 to 50 °C
Environment Humidity	10-90%
Storage Temperature	-40 to 80 °C
Environment Humidity	5-95%
Connection	USB or Bluetooth
Weight	674g
Dimensions	118mm*W100mm*H91mm

6

SAFETY TIPS

- The printer head can become very hot after printing labels. Do not touch the printer head until it has cooled.

- Do not bend the power cord excessively or place objects on the cord. This could result in fire or electrocution.

- Keep the printer out of reach of children.

- Use only approved accessories and do not try to disassemble or repair the unit by yourself.

- Keep the printer away from water and other objects that may destroy or damage the device.

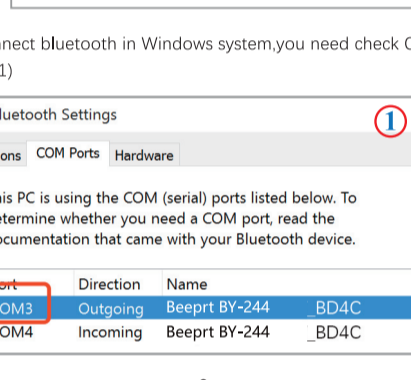
Printer should remain unplugged when not in use for long periods of time.

7

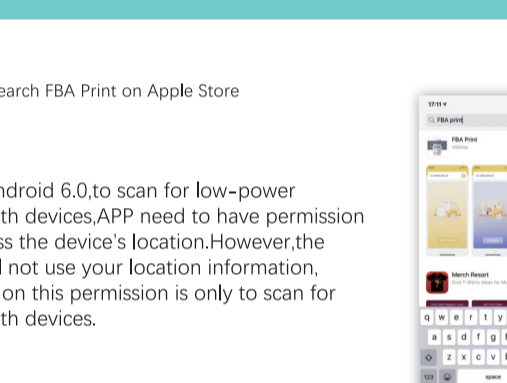
BLUETOOTH FUNCTION

For Windows

1. Open bluetooth device settings, scan and select name "Beepert BY-244 _XXXX" to pair. Input PIN code: 0000 ("BY-244 _XXXX_LE" is BLE mode)

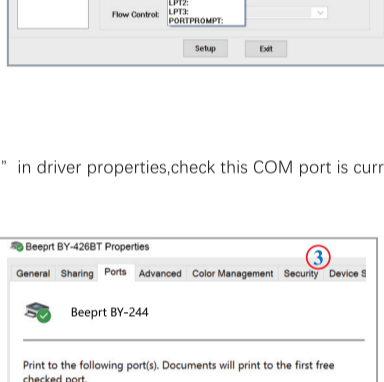


2. If you connect bluetooth in Windows system you need check COM port after pairing (Fig.1)

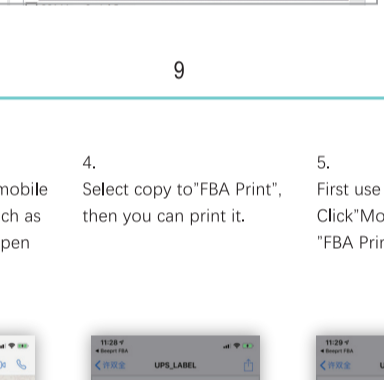


8

3. Run driver setup program and select this COMx to setup.



4. Open "Ports" in driver properties, check this COM port is correct (Fig.3).

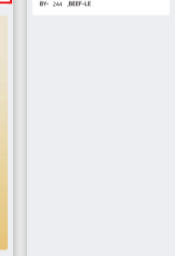


9

FBA Print For iOS & Android

1. Please search FBA Print on Apple Store

Note: After Android 6.0 to scan for low-power Bluetooth devices, APP need to have permission to access the device's location. However, the APP will not use your location information, turning on this permission is only to scan for Bluetooth devices.



2. Open app and connect Bluetooth

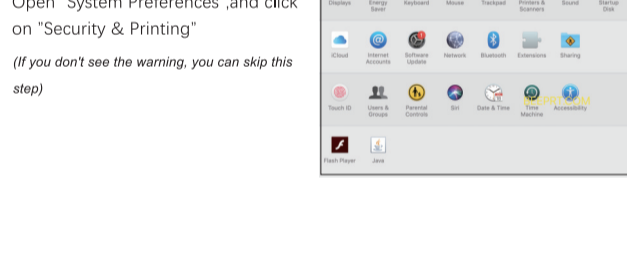


10

3. Send PDF file to mobile social software, such as WhatsApp, then open this file.

4. Select copy to "FBA Print", then you can print it.

5. First use of "FBA Print" Click "More" and add "FBA Print"



11

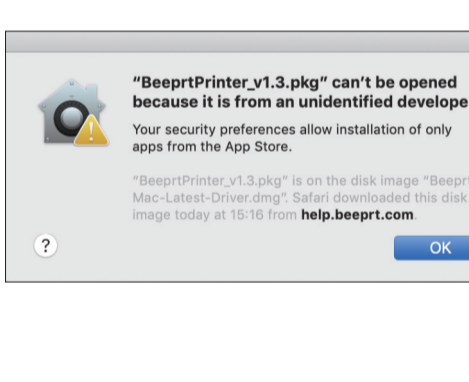
MAC PRINTING SETUP FOR MAC OS

Please insert the included USB into your computer. A flash drive icon will usually appear on the desktop. If a dialog box does not appear, open Finder and select the flash drive on the left side of the window.

You can also download the latest driver here: <http://help.beepert.com>

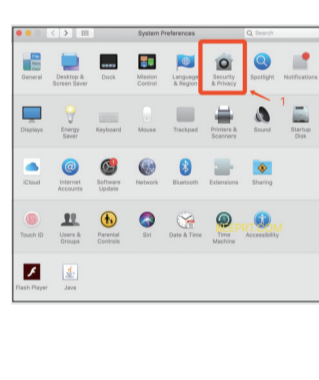
Let us start to install beepert printer driver on Mac now. Beepert requires OS X 10.9 or latest.

Double click the download file, "Beepert-Mac-Latest-Driver.dmg" if you see a warning shown below. (if you don't see this warning, you can skip these two steps)

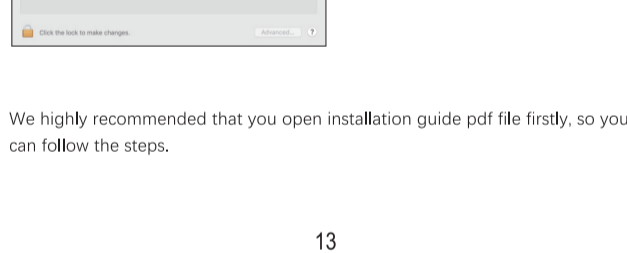


12

Open "System Preferences", and click on "Security & Printing" (if you don't see the warning, you can skip this step)

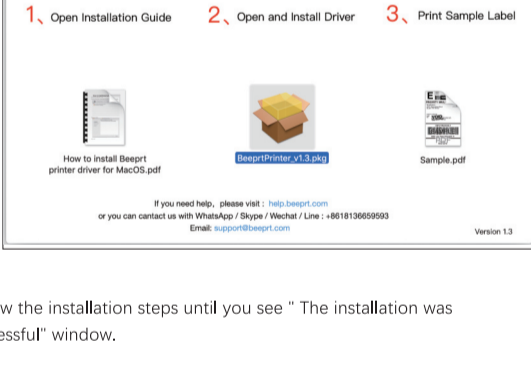


Click on "Open Anyway" button. (if you don't see the warning, you can skip this step)

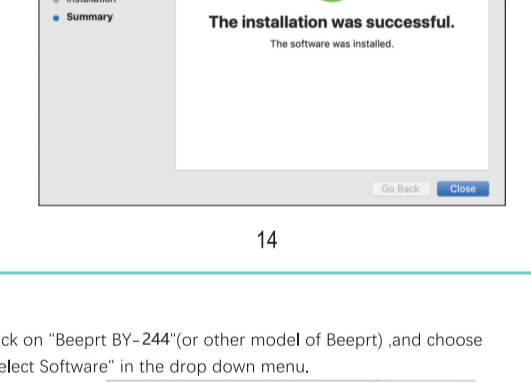


13

Double click "BeepertPrinter_v1.3.pkg" to begin to install the driver.

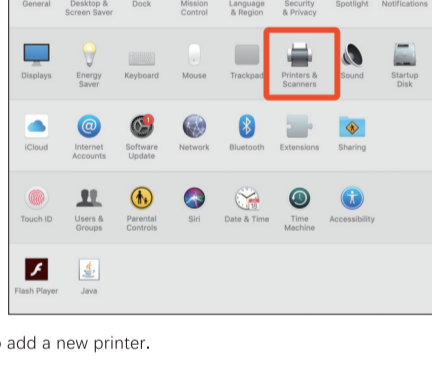


Follow the installation steps until you see "The installation was successful" window.

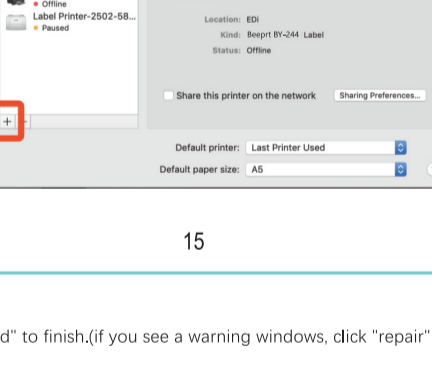


14

Open "System Preferences" and click on "Printers & Scanners".

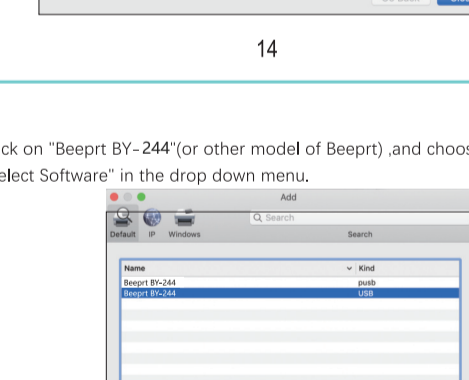


Click "+" to add a new printer.

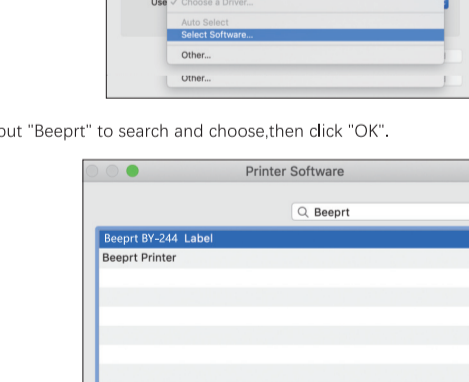


15

Click on "Beepert BY-244" (or other model of Beepert) and choose "Select Software by the driver down menu."

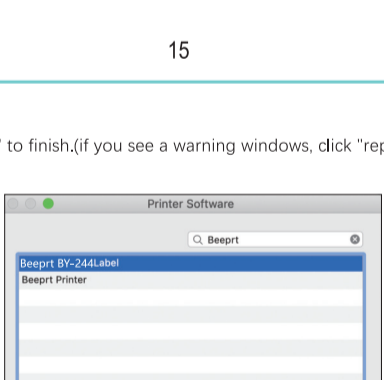


Input "Beepert" to search and choose then click "OK".



16

Click on "Add" to finish. (if you see a warning windows, click "repair" to continue)



17

SETTING THE LABEL SIZE

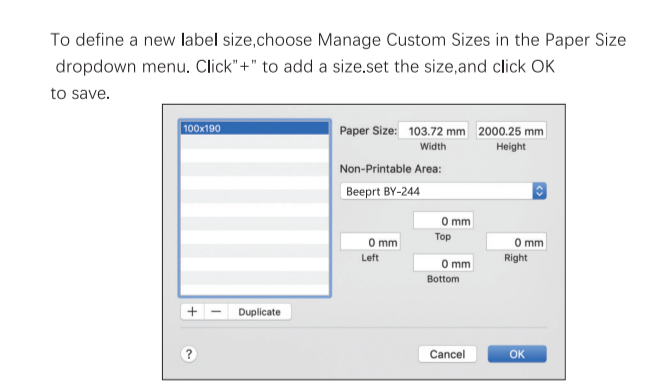
Open a PDF file in Adobe Reader (the recommended program is Adobe Acrobat Reader DC)

On the top menu, select file and the select Print.

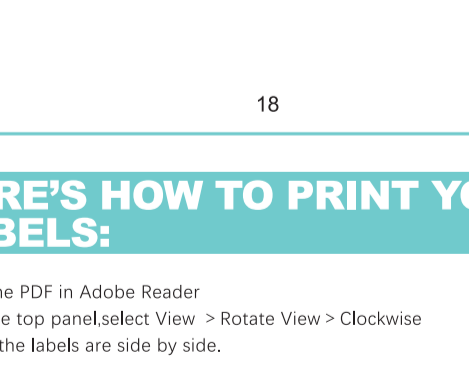


HERE'S HOW TO PRINT YOUR LABELS:

Open the PDF in Adobe Reader From the top panel, select View > Rotate View > Clockwise so that the labels are side by side.



To define a new label size, choose Manage Custom Sizes in the Paper Size dropdown menu. Click "+" to add a size, set the size and click OK to save.



18

HERE'S AN IMPORTANT TIP!

DO YOU HAVE TWO LABELS ON A PAGE LIKE THIS (8.5 x 11 inch) ?



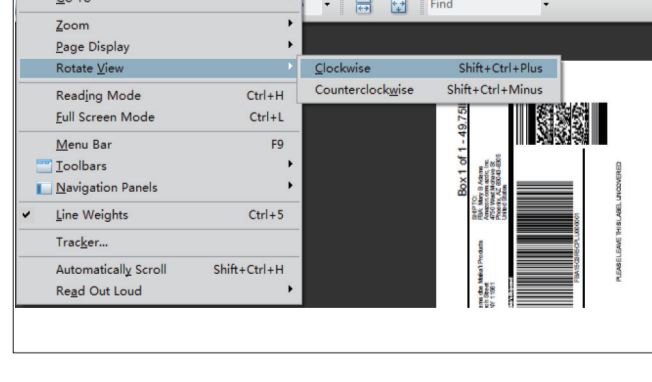
Next, from the top panel, select Edit > Take a Snapshot. Then click and drag over one of the labels.



19

HERE'S HOW TO PRINT YOUR LABELS:

Open the PDF in Adobe Reader From the top panel, select View > Rotate View > Clockwise so that the labels are side by side.



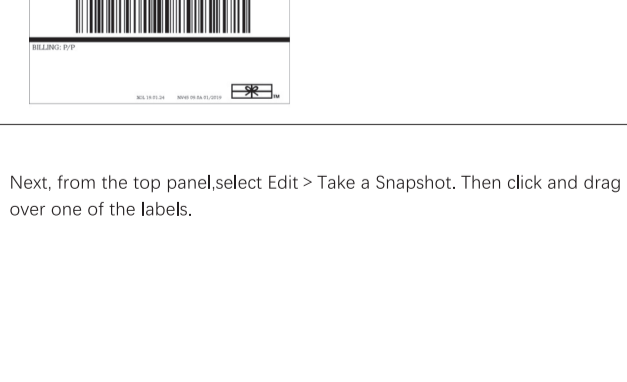
Next, from the top panel, select Edit > Take a Snapshot. Then click and drag over one of the labels.



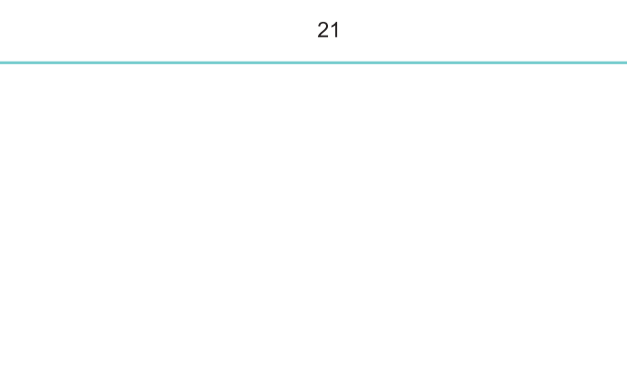
20

HERE'S HOW TO PRINT YOUR LABELS:

Open the PDF in Adobe Reader From the top panel, select View > Rotate View > Clockwise so that the labels are side by side.



Next, from the top panel, select Edit > Take a Snapshot. Then click and drag over one of the labels.



21

Click Print

Make sure that: You select the Label Printer from the Printer menu.

Shrink oversized pages is selected.

Choose paper source by PDF page size is unchecked.

Auto portrait/landscape is selected.

Go to Page Setup... and ensure that your page size of your label A 4"x6" label is approximately 100x150mm.

Happy Printing!

FCC Warning

This device complies with part 15 of the FCC Rules. Operation is subject to the following two conditions: (1) This device may not cause harmful interference, and (2) this device must accept any interference received, including interference that may cause undesired operation.

Any Changes or modifications not expressly approved by the part responsible for compliance could void the user's authority to operate the equipment.

Note: This equipment has been tested and found to comply with the limits for a Class A digital device, pursuant to part 15 of the FCC Rules. These limits are designed to provide reasonable protection against harmful interference when the equipment is operated in a commercial environment. This equipment generates, uses, and can radiate radio frequency energy and, if not installed and used in accordance with the instruction manual, may cause harmful interference to radio communications. Operation of this equipment in a residential area is likely to cause harmful interference in which case the user will be required to correct the interference at his own expense.

FCC Radiation Exposure statement:

This equipment complies with FCC radiation exposure limits set forth for an uncontrolled environment. This equipment should be installed and operated with minimum distance 20cm between the radiator & your body.

This transmitter must not be co-located or operating in conjunction with any other antenna or transmitter