

MINI POCKET PRINTER

User Manual

MP300

Introduction

Thank you for choosing the intelligent digital products produced by our company. We have equipped with detailed instruction. Please read the instruction carefully before you start using this machine, so that you can use this product correctly.

Product: **MINI POCKET PRINTER**
Model Name: MP300

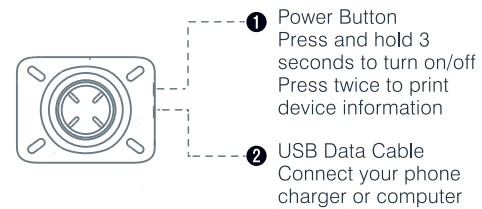
Note: The image shown here is indicative only. Please refer to the product you actually purchased.

Product List

Mini Pocket Printer * 1
User Manual * 1
USB Cable *1

- 01 -

Product Sketch



App Printing Driver Download

Google play or App store to search for iBleem.



Power Indicator Status

White light on: Fully charged / Normal use status.
White light flash: Charging / Out of paper / Over-heat / Cover opened.

**Low power. It will cause the print to be light .
Please charge in time.**

- 02 -

Connect to Print

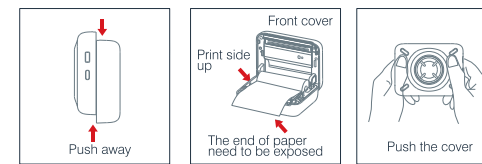
App printing: Turn on the device, following the "iBleem" App prompts to search and connect printer. Or Double-click the power button to print the QR code, then use the App to scan the code to connect printer.

Charging Instructions

DC 5V 1A input charging. Recommended to use mobile phone adapter for charging;
Recommended to fully charge for the first time;
If it is not used for a long time, please charge it every 3 months to avoid long-term natural loss of lithium battery.

- 03 -

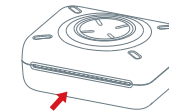
Open/Close Cover and Change Paper



1 Open Cover 2 Paper Loading 3 Close Cover

Clean the Printer Head

- Please turn off the printer and take out the paper inside.
- Dip a cotton cloth or cotton swab with medical alcohol and wipe it gently from the center to periphery of the print head.
- Do not use the printer immediately after cleaning the print head, Please wait 1- 2 minutes for the alcohol to completely evaporate.



Do not touch the print head directly, especially after printing, to prevent overheating and burns.

- 04 -

Battery Warning Note

1. Please use 5V charger to charge according to the specification to avoid damage to the machine.
2. Disassembly, impact, extrusion or fire are prohibited.
3. If severe bulging occurs, do not continue to use.
4. Do not put in high temperature environment, battery after immersion is prohibited to use.
5. Replacement with the wrong type of battery can be explosive, be sure to follow the instructions to dispose of used batteries.

⚠ Attention

1. when charging, please gently insert or pull out the charging line to prevent excessive force damage to the port.
2. After charging, please unplug the charging line in time.
3. In order to avoid danger, do not use or charge in high temperature, high humidity, excessive smoke and dust environment. such as: bathroom, steam room, open fire, etc.
4. Improper charging may lead to print head damage.
5. Do not touch the print head to prevent overheating and scalding.
6. Tear paper blade sharp, be careful not to touch.
7. Contains small parts, not suitable for children under three years of age to use.

- 05 -

changes or modifications not expressly approved by the party responsible for compliance could void the user's authority to operate the equipment. This device complies with Part 15 of the FCC Rules. Operation is subject to the following two conditions: (1) this device may not cause harmful interference, and (2) this device must accept any interference received, including interference that may cause undesired operation.

Note: This equipment has been tested and found to comply with the limits for a Class B digital device, pursuant to Part 15 of the FCC Rules. These limits are designed to provide reasonable protection against harmful interference in a residential installation. This equipment generates, uses, and can radiate radio frequency energy, and if not installed and used in accordance with the instructions, may cause harmful interference to radio communications. However, there is no guarantee that interference will not occur in a particular installation. If this equipment does cause harmful interference to radio or television reception, which can be determined by turning the equipment off and on, the user is encouraged to try to correct the interference by one or more of the following measures:
- Reorient or relocate the receiving antenna.
- Increase the separation between the equipment and receiver.
- Connect the equipment into an outlet on a circuit different from that to which the receiver is connected.
- Consult the dealer or an experienced radio/TV technician for help.

Size: 80*95MM