

Lebooo

Smart Sonic Toothbrush

Quick Start Guide

Rapida Guida

Guía de inicio rápido

Mode d'emploi

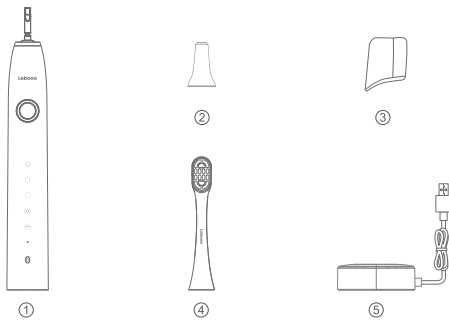
Bedienungsanleitung

Instrukcja Obsługi

Краткое руководство пользователя

Works with
HUAWEI HiLink

Lebooo Smart Sonic Toothbrush



No.	①	②	③	④	⑤
Description	Main body	Output shaft sleeve	Brush cover	Cleaning brush head	Inductive charging base
Quantity	1	1	3	3	1

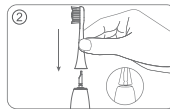
❶ Please check the parts and quantity of the product carefully.

How to brush your teeth correctly

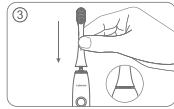
Lebooo advocates Bass brushing technique, it is recommended to brush teeth twice a day for at least 2 minutes each time. Knowing how to brush teeth correctly is conducive to maintaining oral health.



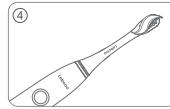
Remove the output shaft sleeve in correct direction.



Keep the brush head and main body in the same front direction.



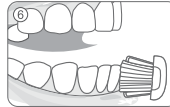
Insert the brush head onto the output shaft correctly, and leave a gap with the toothbrush.



Take a proper amount of toothpaste on the brush head, then soak it and put it in the mouth to start the toothbrush.



Hold the brush gently, make the bristles at 45 degrees with your gum line, and move slowly in a circular motion.



Rinse your mouth after brushing, and air dry the toothbrush naturally.

❗ The anti-splash function can be manually turned on via the AI Life App. When this function is turned on, step 4 needs to be changed as: then start the toothbrush first and put it into your mouth.

HUAWEI HiLink technology can realize the interconnection between intelligent devices. Devices that support HUAWEI HiLink can be managed and controlled through the HUAWEI AI Life App.

How to Install the HUAWEI AI Life App

Scan below QR code with your mobile phone, or search HUAWEI AI Life in the HUAWEI AppGallery, download and install the App.

i If the App has already been downloaded on your mobile phone, please upgrade the App to the latest version by using the above methods.



Add device

For mobile phones in Android 6.0 and above versions, please turn on the system positioning before connecting the toothbrush.



STEP 1

Open the HUAWEI AI Life App, confirm that the network connection is normal and the system Bluetooth and positioning are enabled; when using for the first time, please register/log in HUAWEI account according to the App guidelines.



STEP 2

Enter on App homepage, click "+" to select "add device".

❗ Before connecting the toothbrush, please make sure it is in sufficient power and not started. When binding, keep the toothbrush close to the mobile phone.



STEP 3

In the list of scanned devices, click "connect" on the right side of "Lebooo Smart Sonic Toothbrush".

❗ If no toothbrush is scanned, please click "add manually" to add your toothbrush according to the interface prompts.



STEP 4

When the interface prompts that the device is in connecting, the blue light of the brush will be on, at this time, long press the brush button for 2 seconds according to the prompts, the device will be connected successfully.

❗ When the blue indicator of the brush lights up, it indicates that the toothbrush is connected.



STEP 5

Set device name and place of location, and then return to the App homepage after completing it. Click the device icon to enter device control interface to control the toothbrush.

Function operation

- **Start/Stop**

Short press the brush button once to start it, after the toothbrush works in current mode for 10 seconds, short press the button again will stop its working.

- **Mode Switch**

When the toothbrush is activated in current mode within 10 seconds, short press the brush button can switch gears. Selection of tooth brushing mode is also supported in the HUAWEI AI Life App.

- **Duration and Intensity Adjustment**

Modification of default brushing duration and intensity is supported in HUAWEI AI Life App.

- **Memory Function**

When starting, the toothbrush will automatically read the intelligent memory mode after last brushing.

- **Brushing Data Record and Analysis**

When connecting to HUAWEI AI Life App while brushing, voice real-time guidance is available to guide and record your brushing, and it will also provide you with professional scores and brushing suggestions after brushing. If there is problem about App brushing data synchronization, please check the FAQ section of the App for details.

- **Intelligent Over-pressure Protection**

The toothbrush supports the reminder function of excessive pressure. When brushing, the toothbrush can sense the brushing pressure in real time, if you brushed too hard, a intermittent weak vibration will occur. When connecting the AI Life App for use, there will be a text prompt on the guidance page to remind you over pressured instead.

- ❗ The over-pressure reminder function is turned on by default, which can be turned off in the AI Life App.
The bearing pressure on brush head should not be greater than 1kg, otherwise the sensor may be damaged.

- Anti-splash function at startup

The toothbrush supports anti-splash function. When this function is enabled in the AI Life App, the vibration of the brush head is weak when it is under no pressure, which can effectively reduce accidental throwing out or splash of toothpaste and water stains; when the brush head contacts with the teeth, the toothbrush can return to the normal vibration state.

- ❗ (1) The anti-splash function of the brush head is off by default, and it needs to be opened in the AI Life App before use;
- (2) Please start the toothbrush after Applying toothpaste on it, and then stick the bristles close to the teeth to start brushing. If you stick it to your teeth first before starting it, the anti-splash function may be temporarily disabled (recovered after restart);
- (3) It is not recommended to use this product during bath or shower, for avoiding affect the anti-splash experience or cause failure;
- (4) The product can be used normally at -20°C to +60°C, but it is not recommended to turn on the anti-splash function in an environment lower than 5°C or higher than 40°C;
- (5) When the anti-splash or over pressure protection function is abnormal, turn off the toothbrush and restart it. In most cases, the function can be restored without affecting the brushing timing.

Modes Introduction

- **Cleaning mode: 31000 times/min**

High-frequency sonic power makes it possible to burst a large number of micro air bubble and water spraying, generating strong impact force to easily brushing away the stubborn tartar. It is suitable for daily use by most people, and can effectively clean blind area of your oral cavity.

- **Whitening mode: 27000~38000 times/min**

The frequency of strong and weak waves can alternate with each other, which makes it easier to loosen various tooth stains on your teeth, and polish them brightening. It is suitable for people with demand of whitening teeth.

- **Sensitive mode: 28000 times/min**

It can gently care for sensitive oral cavity, bring comfortable cleaning experience and massage periodontal soft tissue at the same time. This mode is Applicable to people with sensitive oral cavity or those who use electric toothbrush for the first time.

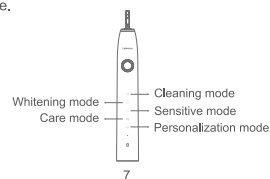
- **Care mode: 28000~33000 times/min**

The combination of different vibration modes can be Applied to populations with different oral environments, and the Appropriate intensity is just designed for the people who undergoing oral treatment.

- **Personalization mode**

The personalized mode supports 20 different modes of customization, which can be freely selected in HUAWEI AI Life App. It is better for oral health to choose a tooth cleaning mode that suits your own usage habits.

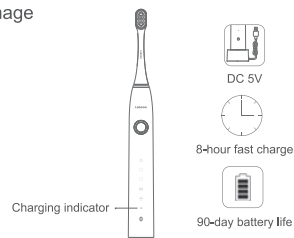
i In the personalization mode, the brush is default in "strong stain removal" mode.



Charging Instructions

- Before using for the first time, please start the toothbrush. In case of low battery or no electricity, please make it fully charged before use, and later you can use or charge it at any time.
 - If it has not been used for more than 6 months, please charge according to the charging requirements of the purchased toothbrush model till it is fully charged. See the charging image for charging.
 - Low power reminder: if the brush vibrates for 3 times continuously and the charging indicator light is red for long, the HUAWEI AI Life App reminds the toothbrush is in a low power state, please charge it in time.
 - Please place the main body of the toothbrush on the charging base and make sure that the charging stand is safely connected to the power supply.
 - Main body charging: the red breathing status of the indicator indicates charging, while the indicator in green indicates full charged.
 - When it is not charged for a long time, the indicator light will light up after 10 minutes when recharging, which is a normal phenomenon.
- ❗ When charging, keep away from the water source to ensure charge safely and the service life of the product. The 8-hour fast charge is laboratory data based, and the actual charge time will vary according to charging environments.

Charging Image



Maintenance



Clean the brush head

Clean the bristles and brush head after each use and let them dry naturally.

Do not pull the bristles, or it may deform and cause the bristles to fall off.



Clean the brush handle

Scrub with a soft cloth and let it dry naturally, do not immerse it into water for a long time.

Do not use water over 40°C or acidic cleaning fluid for cleaning.



Clean the charging base

Wipe off the stains on the charging base with a soft cloth. Before cleaning the charging stand, be sure to disconnect the power supply and pay attention to safety.

Wipe the USB port with a soft cloth to avoid short circuit.



Replace the brush head

There are blue faded bristles on the top of cleaning and whitening brushes, the color of the bristles will gradually become lighter during use.

It is recommended to replace the brush head every three months.

App FAQ

- **Bluetooth enabled but can not searched**

When searching toothbrush with a same account, the toothbrush bound by this account will not be displayed in the search list again. Please delete this toothbrush first if you want to rebind.

- **How to synchronize offline brushing data**

This product supports synchronizing brushing data. The brushing data generated with no AI Life App connected will be saved in the brush; When entering the device details page from the device list and the Bluetooth connection is successful, if there is offline data in the brush, the synchronization data will be prompted at home page bottom, at this time click the prompt box to complete data synchronization.

- **Missing data while synchronizing data**

- (1) Brushing data with brushing time less than 30 seconds is invalid and cannot be saved and synchronized;
- (2) A total of 60 teeth brushing data can be stored in the brush. If the data exceeds the limit, the previous records will be overwritten. Please synchronize data in time;
- (3) Before synchronizing the brush data, please make sure that the network is connected, because no data can be synchronized if there is no network connection.

- **Historical data storage and protection**

To protect user privacy, when the bound toothbrush is bound by another account, the offline brushing data will be cleared; when the bound toothbrush is deleted by a same account, all the historical brushing data on cloud will be also cleared.

- **Firmware upgrade considerations**

When upgrading firmware, please do not disconnect the Bluetooth of the mobile phone or exit the upgrade page to avoid abnormal upgrade resulting in unavailability of the toothbrush; When the upgrade process fails abnormally, you can reconnect the toothbrush near the mobile phone and upgrade again.

- ❗ Make sure your toothbrush is fully charged before upgrading firmware.

Basic Parameters

Product name: Lebooo Smart Sonic Toothbrush • StarDiamond
Product model: LBT-203552A

Brush Body
Rated voltage: 3.7V=
Rated power: 2.0W
Battery capacity: 2500mAh
Material: PC
Waterproof rating: IPX7

Charging Base
Input: 5V=1A
Rated power: 3.8W

Cleaning Brush Head
Nominal bristle diameter: 0,152mm
Material: Brush Handle ABS
Bristles DuPont + PEDEX, Germany

Important Safety Tips

⊗ DANGER!

- When first time using this product, some people will feel tooth irritation or numbness, which is a normal phenomenon; if the above situation still occurs after two weeks of continuous use, please stop using this product and seek medical treatment in time.
- Non professionals are forbidden to dismantle this product. If battery replacement is needed, please consult the after-sales service center authorized by Leboooo.
- The inductive charging base is used to charge the brush body only. Do not place any mobile phone, metal and other various foreign objects in the induction charging position in order to prevent personal or product damage.
- Do not use other chargers to charge the main body to avoid damaging the product.
- Please do not charge the product in humid environment such as bathroom.

⚠ CAUTION!

- Only Leboooo special brush head can be used on this product.
 - This product is designed to clean teeth, gums and tongue only. Do not use it for any other purpose.
 - This product is for personal private use and cannot be used by dentists or other organizations for many patients.
- In order to ensure safety, children, people with physical imperfection, mental or sensory disorders and lack of relevant experience and knowledge can only use this product under the premise of the supervision or guidance.

ⓘ REMINDER!

- People with following symptoms are prohibited from using or need consult a dentist:
 - (1) People who have just received oral/periodontal surgery or are under treatment within 2 months;
 - (2) People with other symptoms in oral cavity (including those with unstable dentures or persistent bleeding gums, etc.);
 - (3) Other people with sensitive and weak oral cavity.
- Do not expose this product to hair care products (such as gelatin and oil) or hand sanitizer to avoid damage the product surface.

Battery Safety Tips

- Do not connect a metal conductor with the two poles of the battery, or contact any end of the battery to avoid short circuit, and accidental injuries such as burn caused from overheating of the battery.
- Do not expose the battery to high temperature or around heating equipment, such as sunshine, heater, microwave oven, oven or water heater. For overheating of the battery may cause an explosion.
- Do not disassemble or modify the battery, insert into foreign objects, immerse in water or other liquids, so as not to cause leakage, overheating, fire or explosion.
- If the battery leaks, do not contact your skin or eyes with leaked liquid. In case of contact with skin or eyes, please rinse immediately with water and go to hospital for medical treatment.
- Do not throw the battery into fire, or it will cause fire and explosion.
- Please dispose the battery according to local regulations. Do not dispose the battery as household waste. And any improper handling of the battery may result in battery explosion.
- Do not drop, crush or puncture the battery. Avoid exposing the battery to external pressure, which may cause short circuit and overheating inside the battery.

Environmental Protection

The built-in rechargeable lithium battery of this product can be recycled. After the end of product life, please do not stack the discarded product together with general household waste. Instead, professionals should be asked to take out the battery and then recycle or dispose it according to local regulations on waste management. For any questions, please consult local waste management department or contact Lebooo after-sales service center to recycle the discarded product.



FCC warning:

Any Changes or modifications not expressly approved by the party responsible for compliance could void the user's authority to operate the equipment.

Note: This equipment has been tested and found to comply with the limits for a Class B digital device, pursuant to part 15 of the FCC Rules. These limits are designed to provide reasonable protection against harmful interference in a residential installation. This equipment generates uses and can radiate radio frequency energy and, if not installed and used in accordance with the instructions, may cause harmful interference to radio communications. However, there is no guarantee that interference will not occur in a particular installation. If this equipment does cause harmful interference to radio or television reception, which can be determined by turning the equipment off and on, the user is encouraged to try to correct the interference by one or more of the following measures:

- Reorient or relocate the receiving antenna.
- Increase the separation between the equipment and receiver.
- Connect the equipment into an outlet on a circuit different from that to which the receiver is connected.
- Consult the dealer or an experienced radio/TV technician for help.

This device complies with part 15 of the FCC Rules. Operation is subject to the following two conditions:
(1) This device may not cause harmful interference, and (2) this device must accept any interference received, including interference that may cause undesired operation.

The device has been evaluated to meet general RF exposure requirement. The device can be used in portable exposure condition without restriction.

Fault Diagnosis

Fault	Cause analysis	Elimination method
Decrease of vibration intensity	(1) The toothbrush forcefully presses against the teeth (2) Too close contact between brush head and main body	(1) Place the brush head gently on the teeth (2) Remove the brush head from the handle and reattach it on the output shaft again
Toothbrush can only work for a short time even if it is being charged	Low power	(1) Not enough charging time (2) The product has not been used for more than 6 months (3) End of battery life
Toothbrush stops working	(1) Toothbrush without electricity (2) Toothbrush failure	Connect the main body to the power supply for charging, and confirm that the charging indicator light is on

i Rapid troubleshooting enables the product to resume work as soon as possible.

Legal Notice

Trademarks and Permissions

The word mark *Bluetooth®* and its logo are all registered trademarks of *Bluetooth SIG, Inc.*, and any use of such trademark by Lebooo is subject to strict license restrictions.

Dongguan Lebooo Electronic Technology Co., Ltd.

Official website: www.lebooo.cn/en/site/index

Email: lebooo@lebondsonic.com

The product is designed by Lebooo.