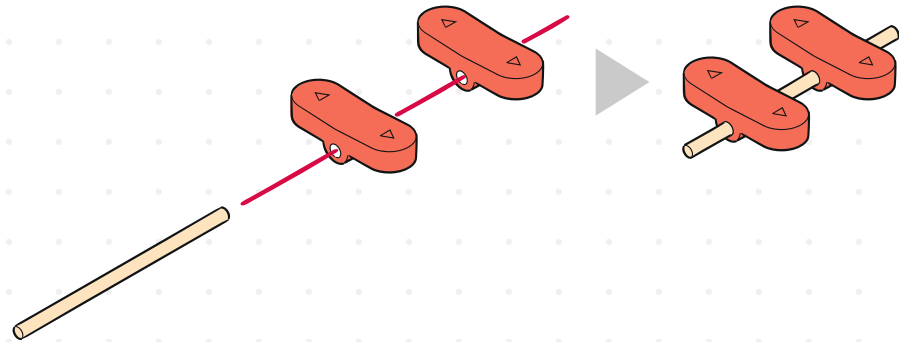
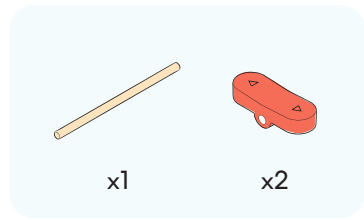
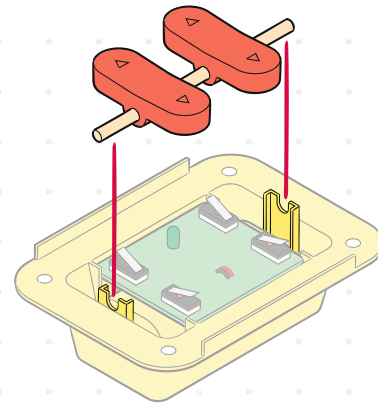


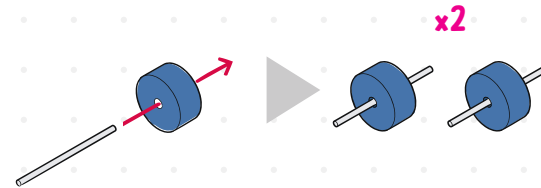
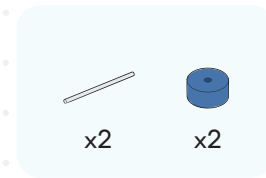
5



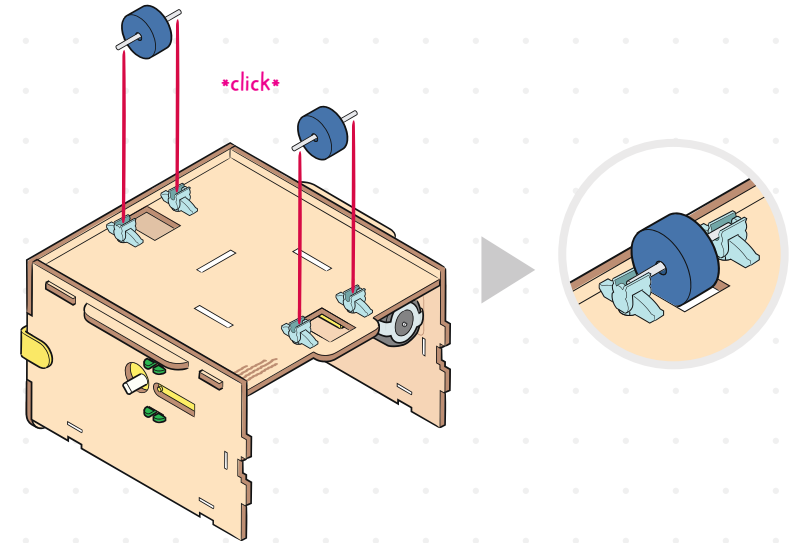
6



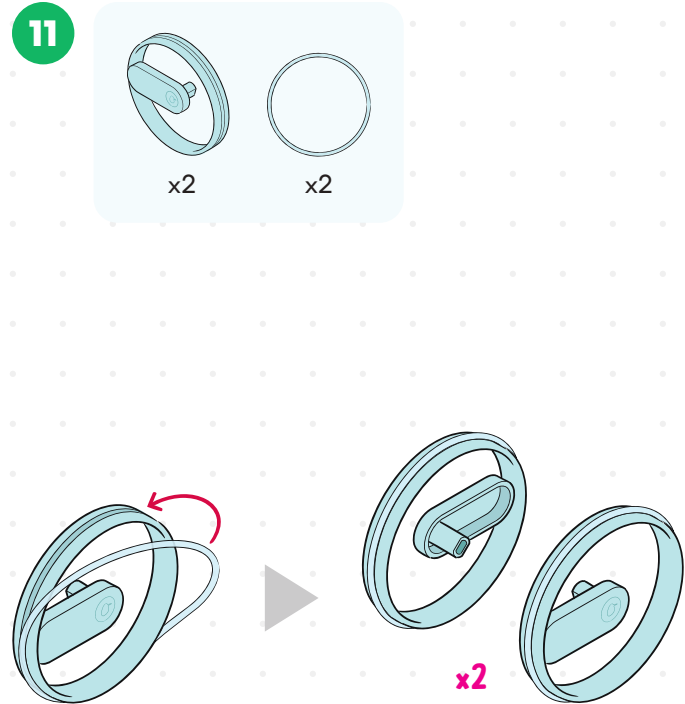
9



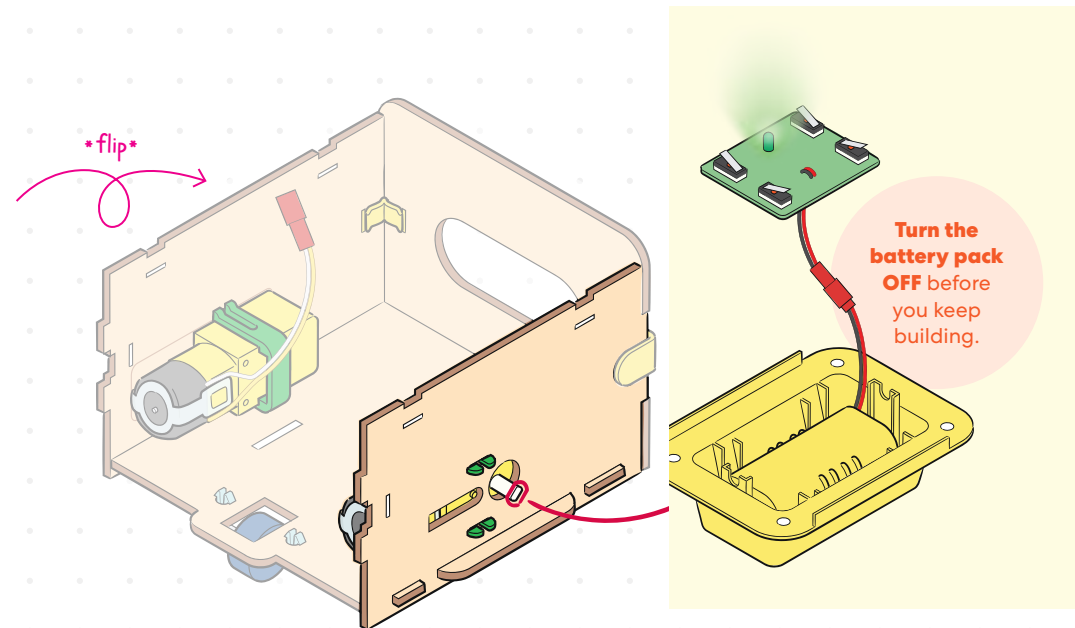
10



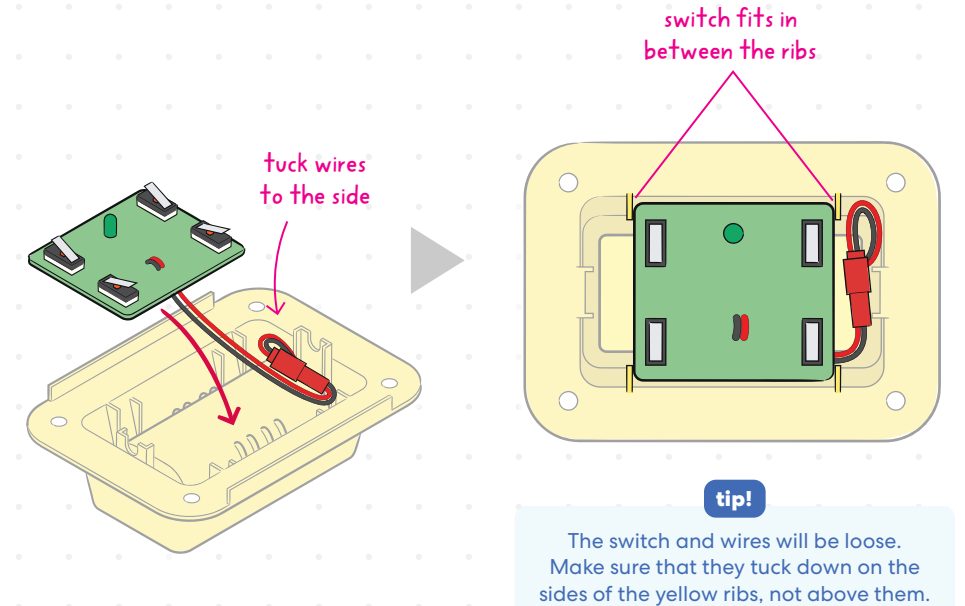
11



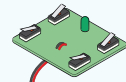
12



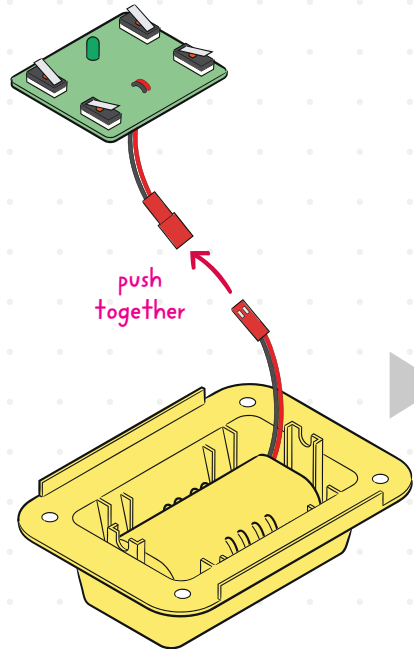
4



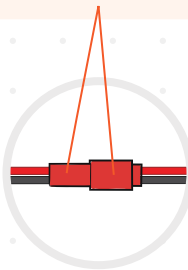
3



x1

**caution!**

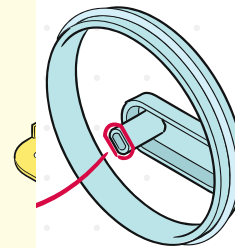
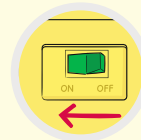
Remember to hold the red connectors when putting wires together or taking them apart.

**Stop & Check****1. Turn the battery pack ON.**

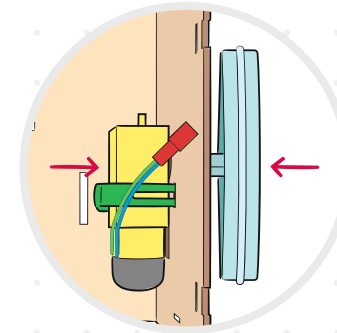
The light will blink!

**2. If it doesn't, check that:**

- The tab on the battery pack is pulled out.
- The wires on the battery pack are fully connected to the wires on the transmitter.
- The battery pack on the bot is turned OFF.



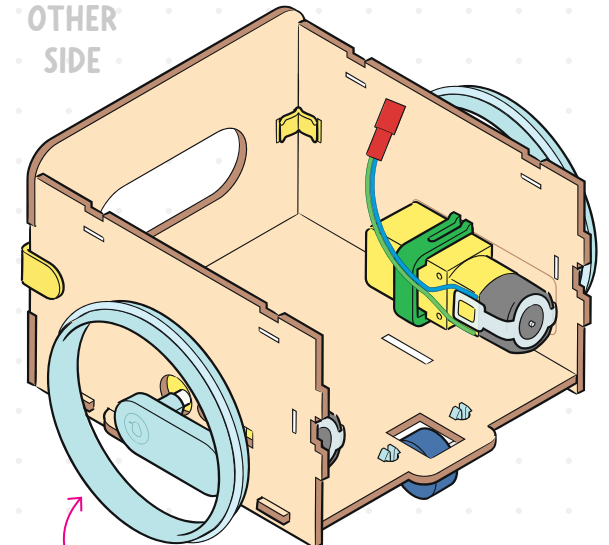
TOP VIEW

**tip!**

Push on the motor and the middle of the wheel to fit them together.

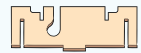
13

OTHER SIDE

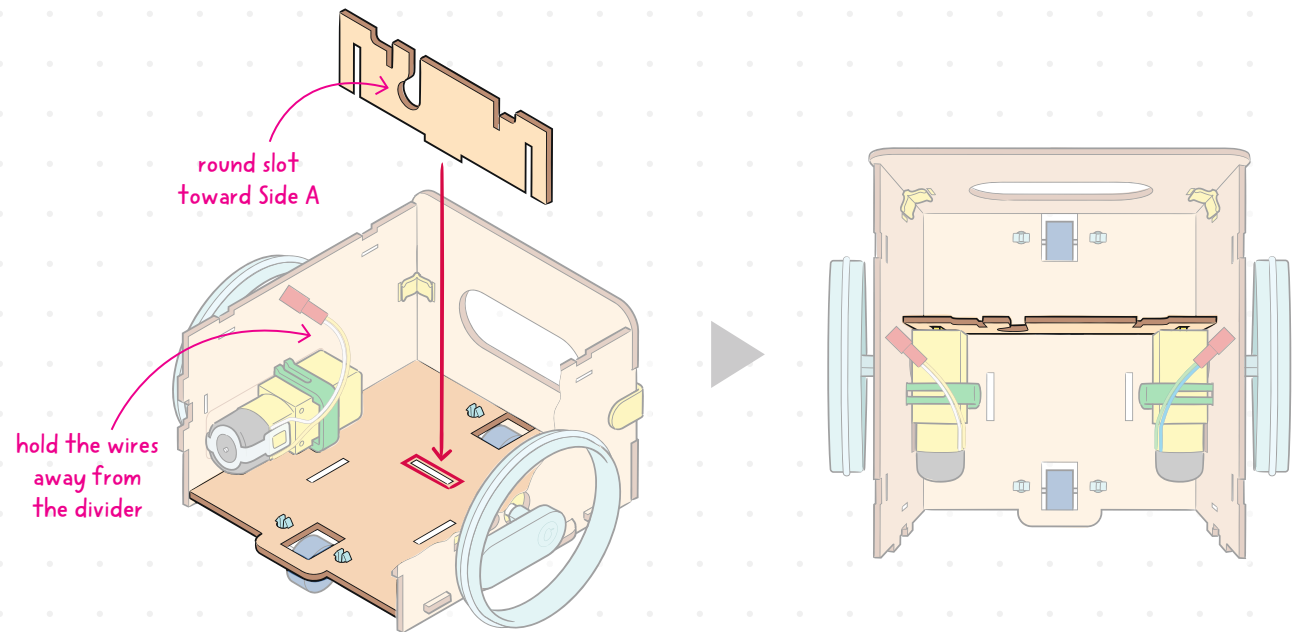


repeat  
Step 12

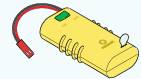
14



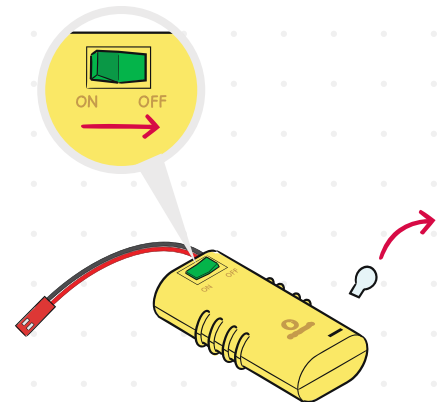
x1



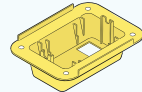
1



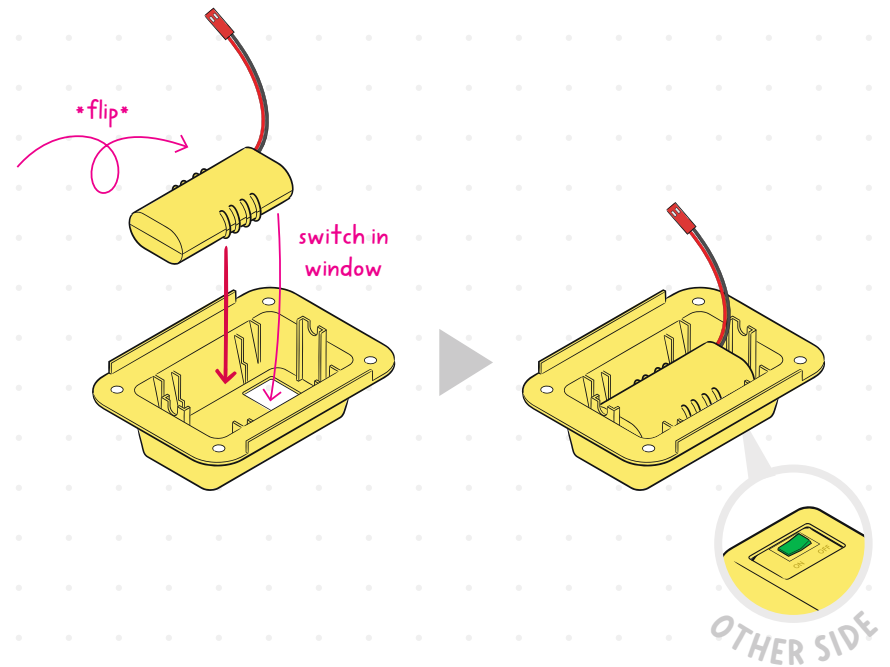
x1



2



x1



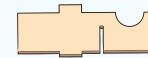
## Part D

# Make the controller <sup>MZ</sup>

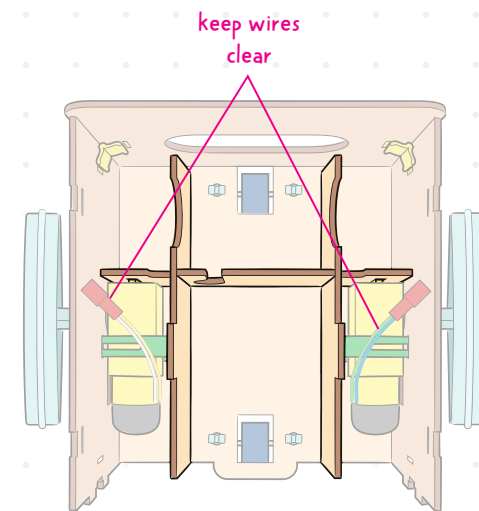
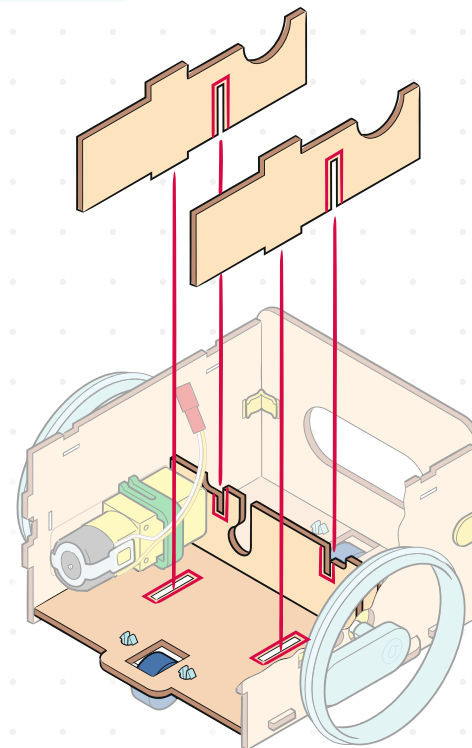
Message received,  
loud and clear!

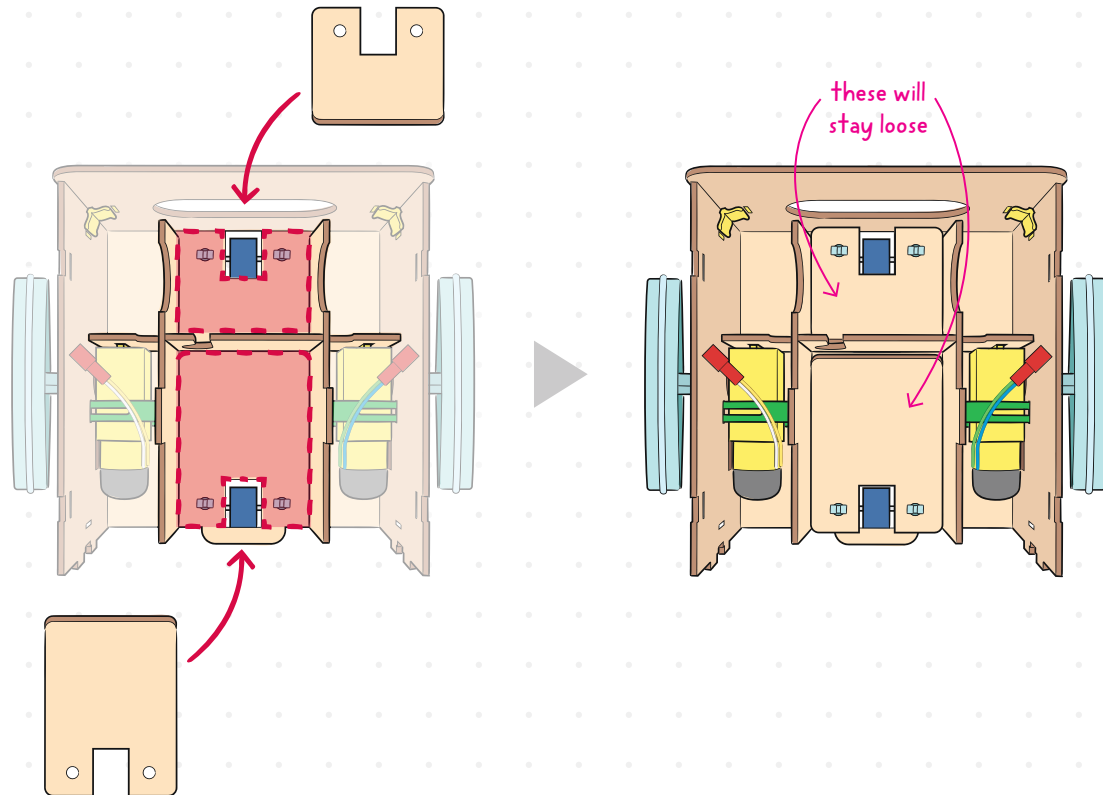
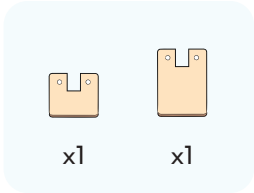


15



x2





## Part C

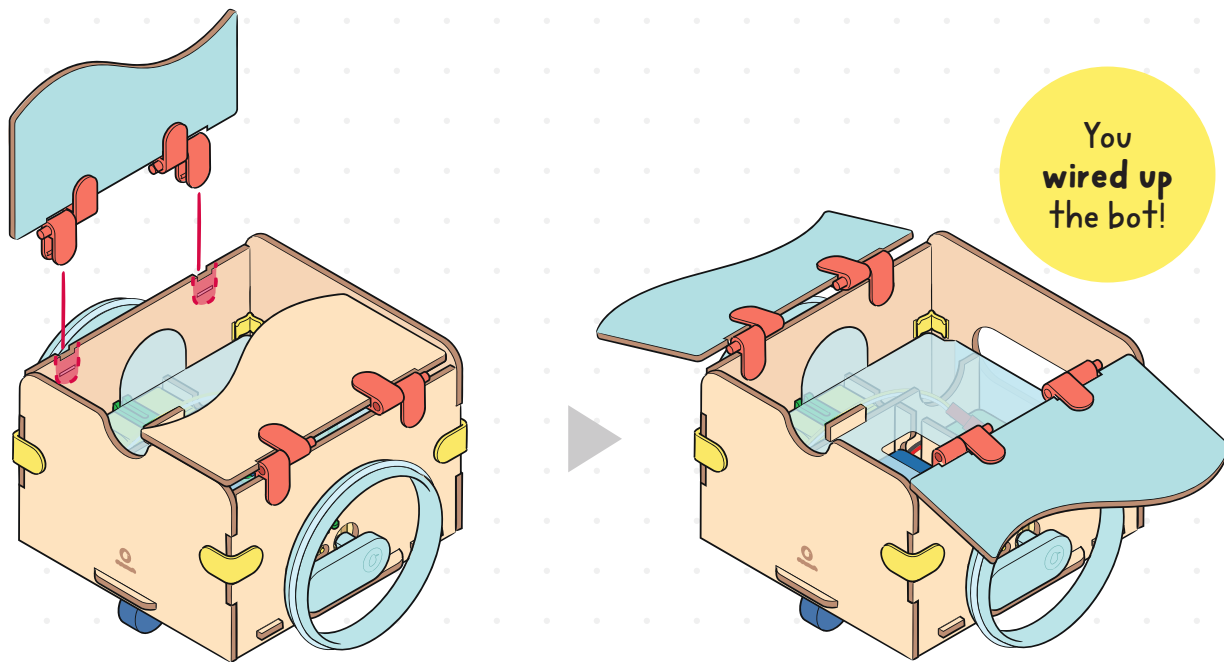
# Customize your bot!

Grab the **crate cover**.  
You'll find lots of ways  
to customize your bot.  
Try them out or make  
up your own!

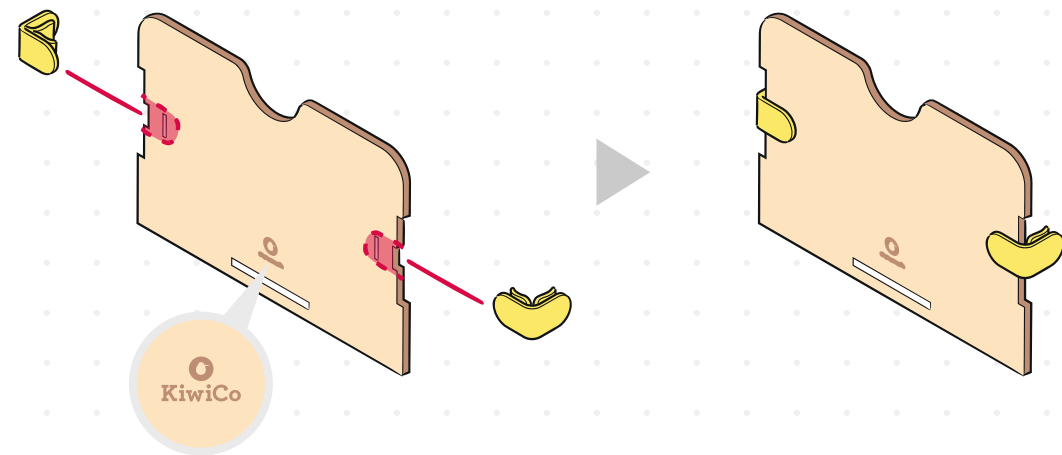
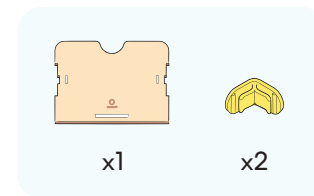


If you want  
to keep building,  
go ahead! You  
can always  
customize later.

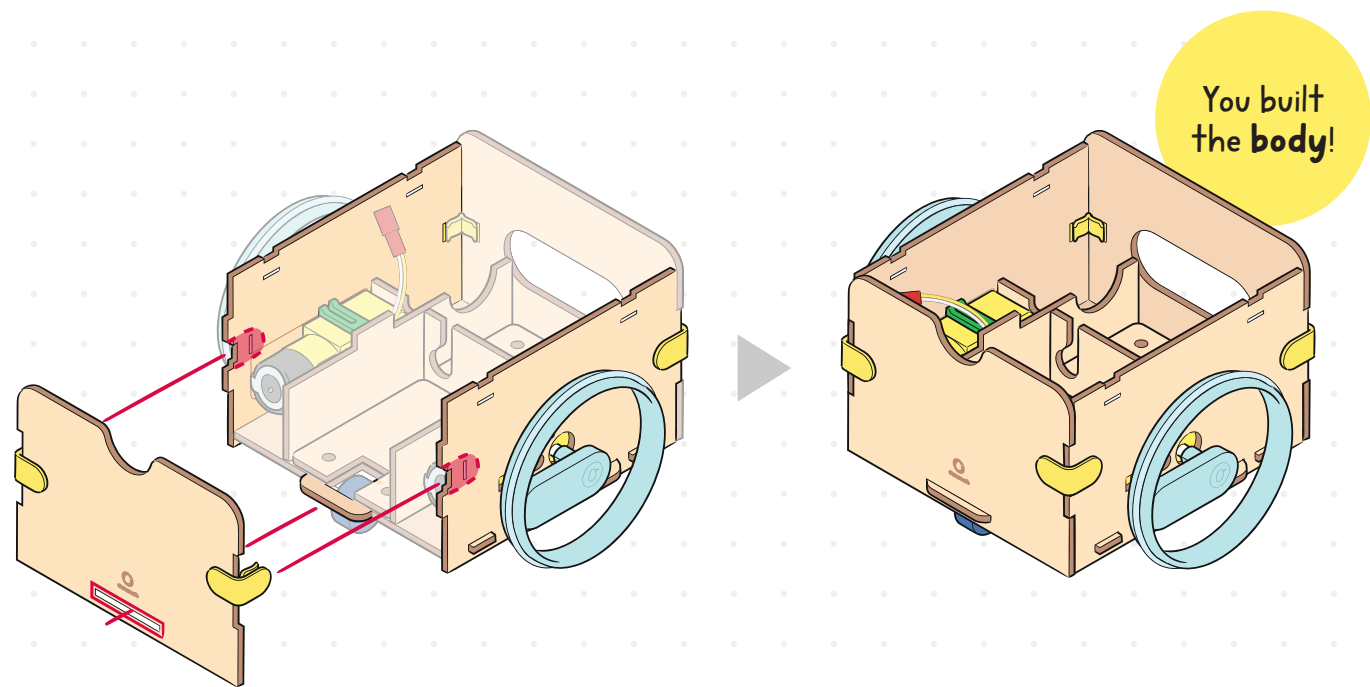
10



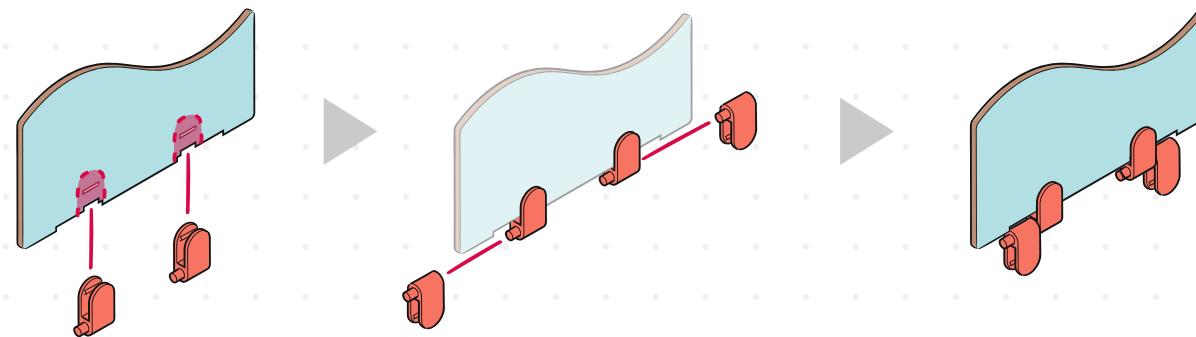
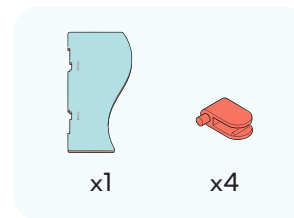
17



18



9





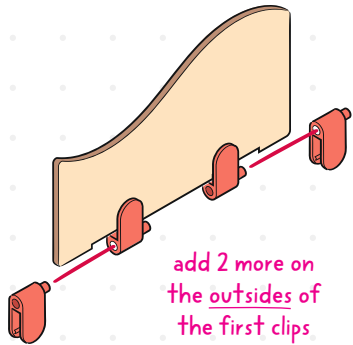
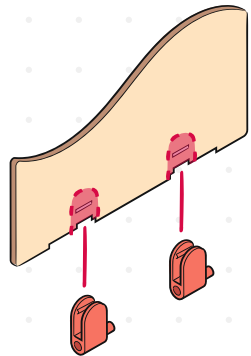
8



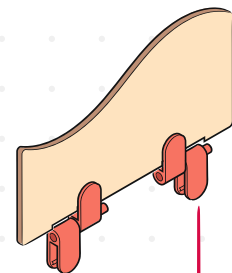
x1



x4



add 2 more on  
the outsides of  
the first clips

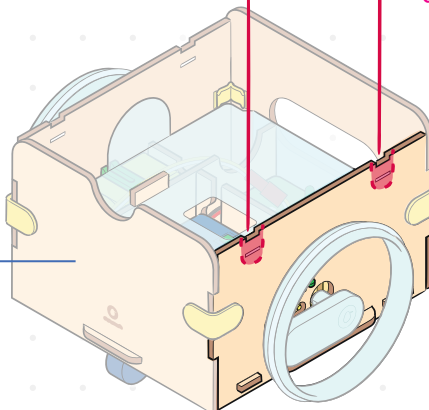


attach the  
clips one at  
a time

•click•

**tip!**

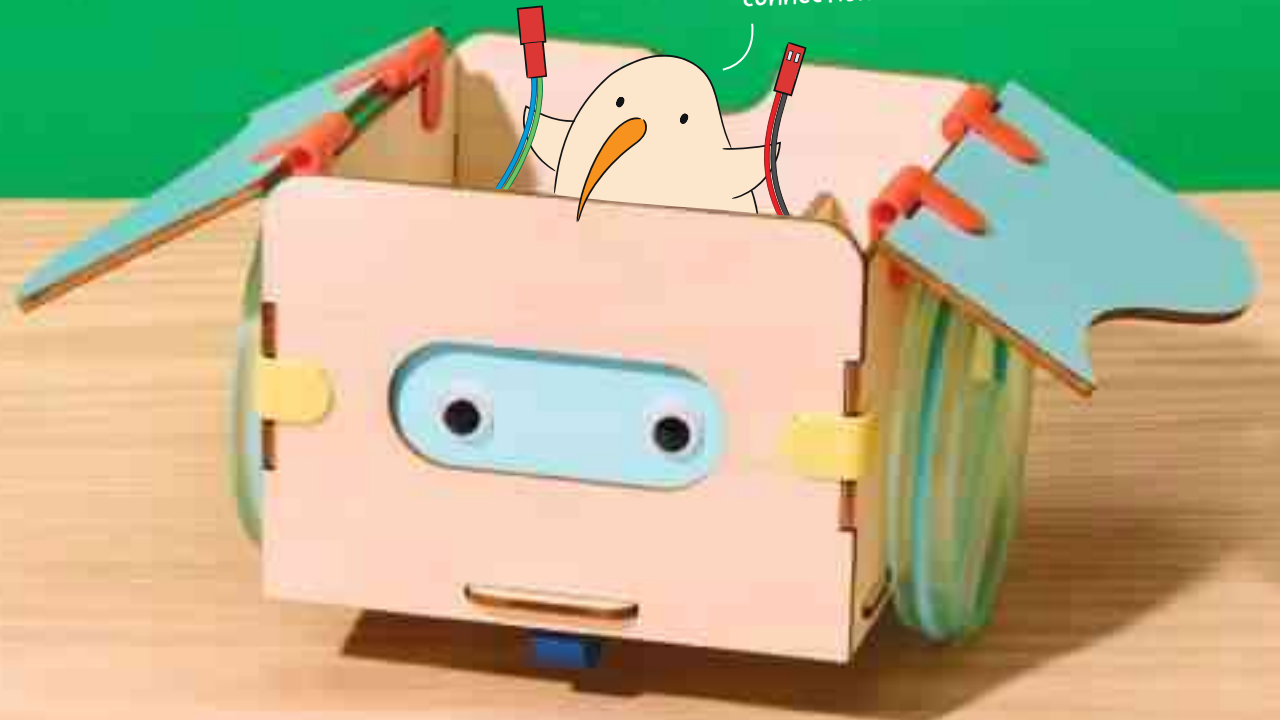
Hold the bot by  
the body when  
pushing down.



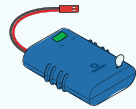
Part B

# Wire it up

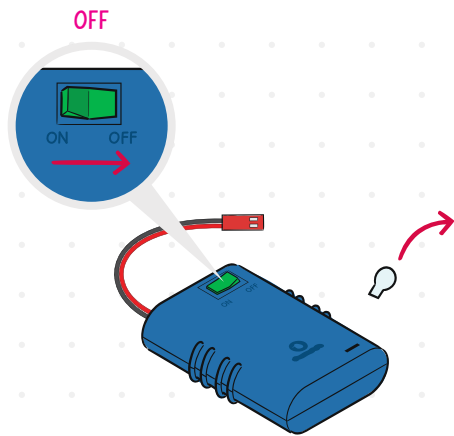
Let's make some  
connections!



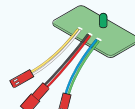
1



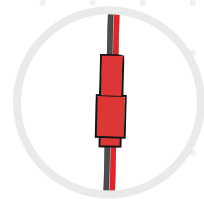
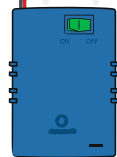
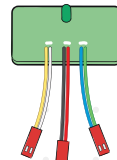
x1



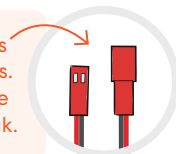
2



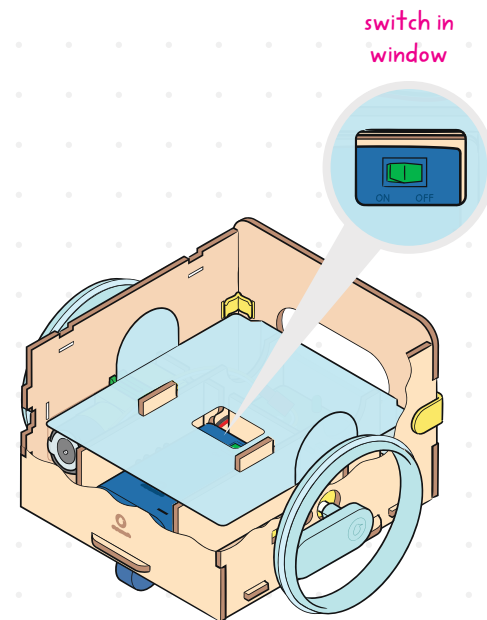
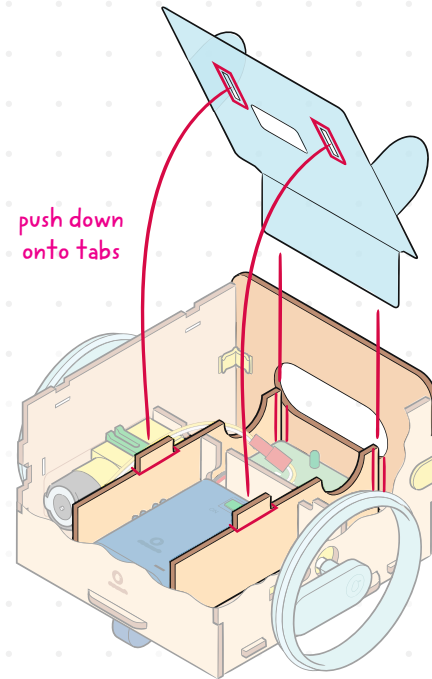
x1

**caution!**

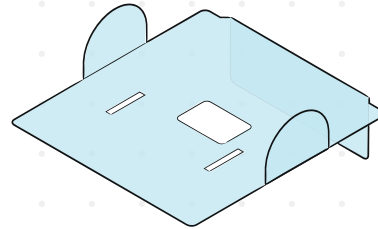
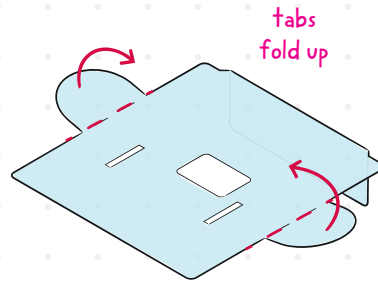
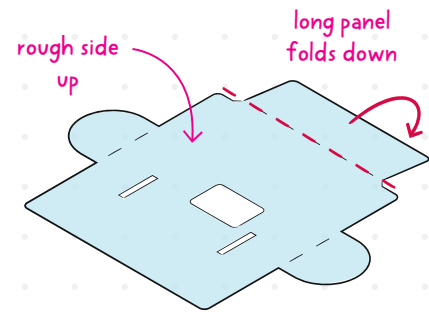
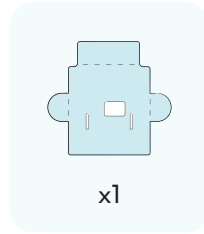
Hold the red connectors  
when working with wires.  
Don't pull directly on the  
wires, or they could break.



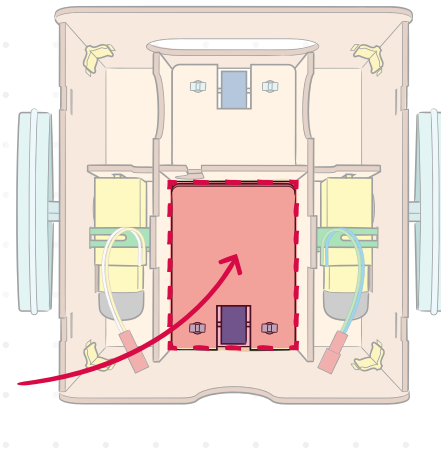
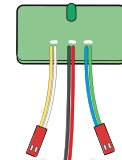
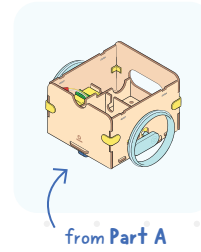
7



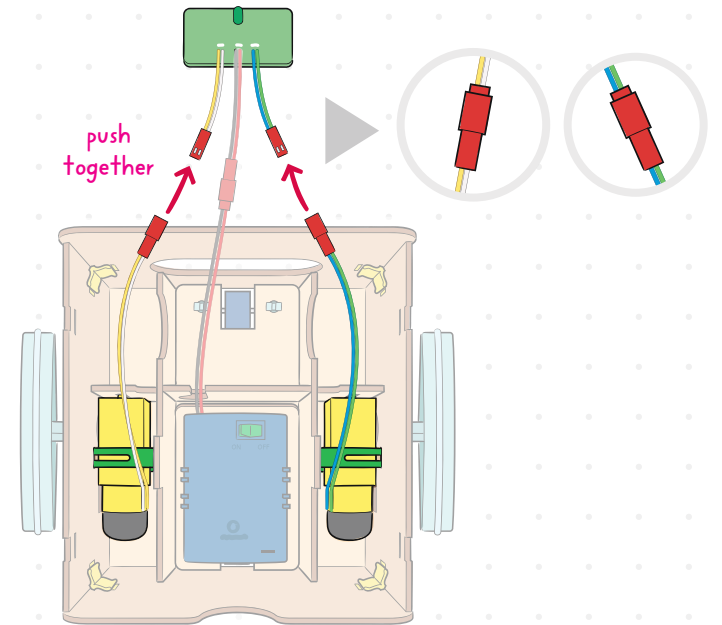
6

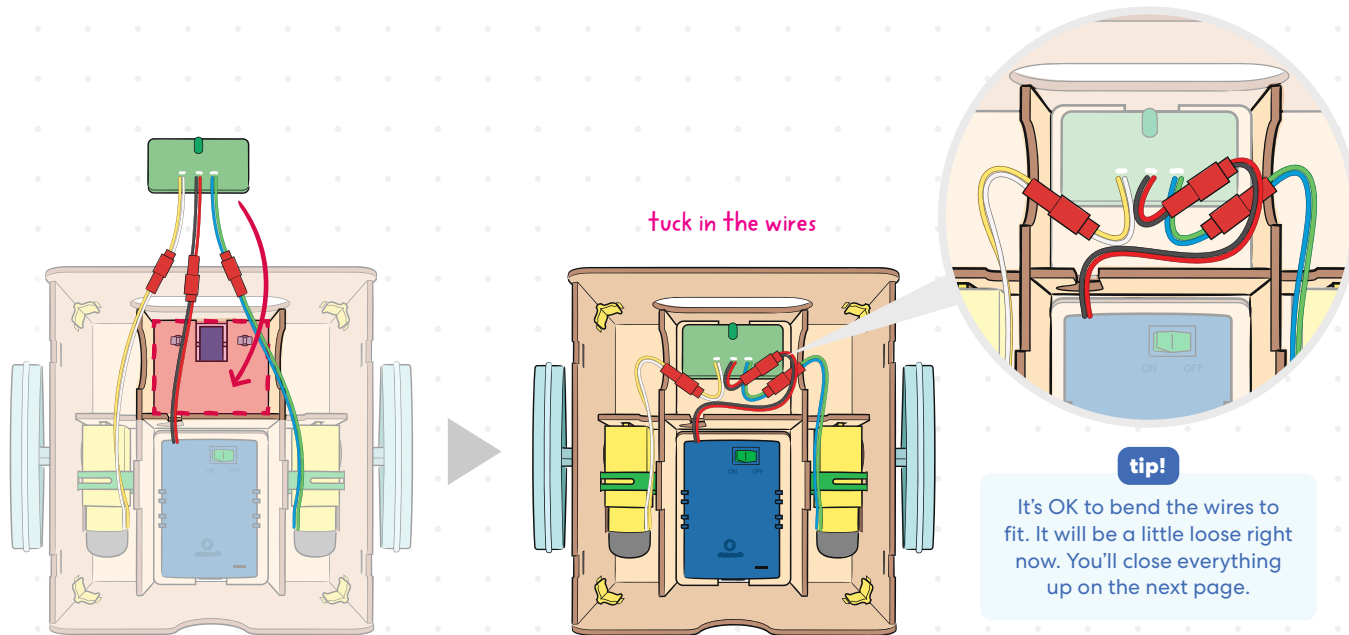


3



4

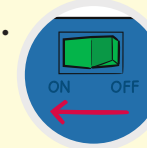




### Stop & Check

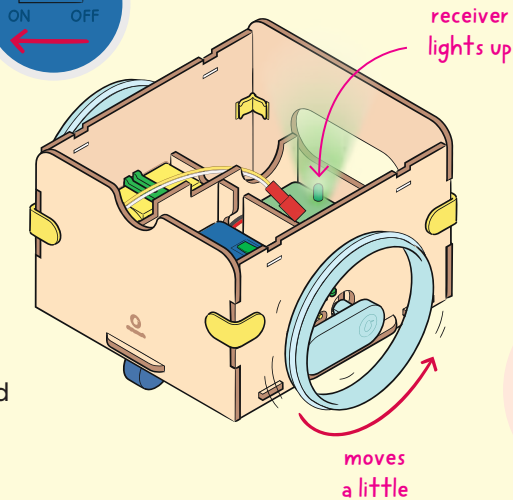
#### 1. Turn the battery pack ON.

The receiver will light up and the wheel on Side B will move a little.



#### 2. If your bot doesn't do either of these things, turn the battery pack OFF and make sure:

- The tab on the battery pack is pulled out.
- The battery pack and motors are fully connected to the same color wires on the receiver.



Turn the **battery pack OFF** before you keep building.

# FCC Compliance

This device complies with Part 15 of the FCC Rules. Operation is subject to the following two conditions:

1. This device may not cause harmful interference.
2. This device must accept any interference received, including interference that may cause undesired operation.

This equipment has been tested and found to comply with the limits for a Class B digital device, pursuant to Part 15 of the FCC Rules. These limits are designed to provide reasonable protection against harmful interference in a residential installation. This equipment generates, uses, and can radiate radio frequency energy and, if not installed and used in accordance with the instructions, may cause harmful interference to radio communications. However, there is no guarantee that interference will not occur in a particular installation. If this equipment does cause harmful interference to radio or television reception, which can be determined by turning the equipment off and on, the user is encouraged to try to correct the interference by one or more of the following measures:

- Reorient or relocate the receiving antenna.
- Increase the separation between the equipment and receiver.
- Connect the equipment into an outlet on a circuit different from that to which the receiver is connected.
- Consult the dealer or an experienced radio/TV technician for help.

**Warning:** Changes or modifications not expressly approved by the party responsible for compliance could void the user's authority to operate the equipment.

---

A. This device complies with Industry Canada's licence-exempt RSSs.

Operation is subject to the following two conditions:

1. This device may not cause interference.
2. This device must accept any interference, including interference that may cause undesired operation of the device.

Cet appareil est en conformité avec les spécifications des normes radio (RSS) exemptées de licence d'Industry Canada.

Son fonctionnement est soumis aux deux conditions suivantes:

1. Cet appareil ne doit pas provoquer d'interférences.
2. Cet appareil doit accepter toute interférence, y compris les interférences qui peuvent causer un mauvais fonctionnement de l'appareil.

B. This device complies with the ISSED radiation exposure limit set forth for an uncontrolled environment. This transmitter must not be co-located or operating in conjunction with any other antenna or transmitter.

Cet appareil est en conformité avec la limite d'exposition aux radiations ISSED définies pour un environnement non contrôlé. Cet émetteur ne doit pas être co-localisé ou opérant en conjonction avec une autre antenne ou émetteur.