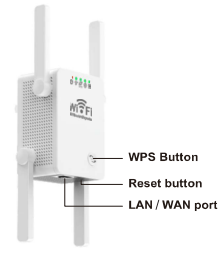


Quick installation guide

Model:U8

1.Panel Layout

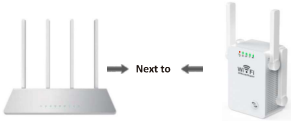


Name	Status	Indication
Power	Red	Power indicator
2.4GHz	On	The 2.4GHz wireless band is enabled
2.4GHz	Off	The 2.4GHz wireless band is disabled
WPS	Blinking Blue	WPS connection is in process. This may take up to 2 minutes.
Internet	Blinking Green	The extender is connected to the Internet.
Signal	Solid Orange	The U8 router is connected to the host router, but is too far away from the host router.
Signal	Solid Green	The U8 router is connected to the router, and is in a good location.
Device	Blinking green	One powered-on device is connected to the router's LAN / WAN port.
Device	Off	No powered-on device is connected to the router's LAN / WAN port.

Item	Description
Reset Button	Press and hold this button for more than 5 seconds to reset the router to its factory default settings.
WPS Button	Press this button to enable the WPS function.
LAN / WAN port	For connecting to a DSL/Cable modem, or an Ethernet jack.

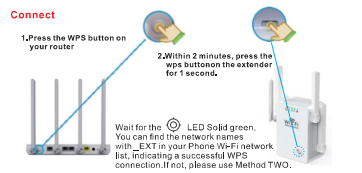
WiFi Repeater mode

In this mode, the router boosts the existing wireless coverage in your home. **1 Connect Your Router**
Plug the extender into an electrical outlet near your host router, and then wait until the LED is on and then off.

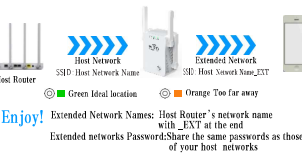


2 Configure repeater mode

Method ONE Using WPS (Wi-Fi Protected Setup)
Using WPS is an easier way to extend your host network. You are recommended to use this method if your host router has the WPS button. The button might look like one of these: . If not, please refer to **Method Two**.

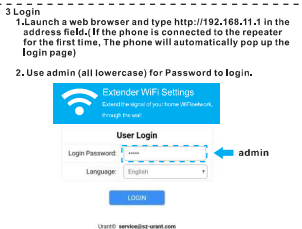


Relocate
1. Plug the extender into an electrical outlet between your router (Host Network) and the WiFi "dead" zone. The location you choose must be within the range of your existing host network.
2. Wait until the LED is lit and solid Green. If not, relocate it closer to the router to achieve a good (or better) signal quality.

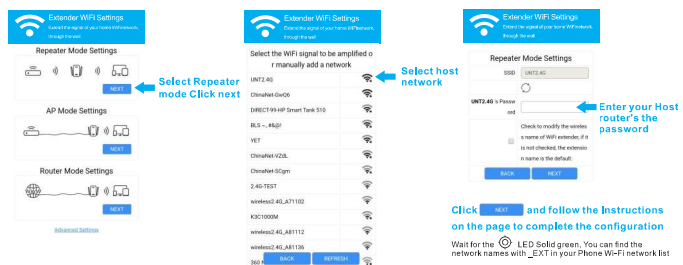


Method TWO Using a Web Browser

For Mobile phone users
Connect to the U8 router.
1. Find the SSID (Network Name) printed on the label of the U8 router.
2. Connect your Mobile phone to the U8 router's network



4 Mode selection



Relocate

1. Plug the extender into an electrical outlet between your router (Host Network) and the WiFi "dead" zone. The location you choose must be within the range of your existing host network.
2. Wait until the LED is lit and solid Green. If not, relocate it closer to the router to achieve a good (or better) signal quality.



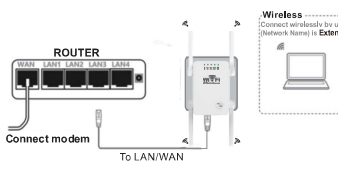
Enjoy! Extended Network Names: Host Router's network name with _EXT at the end, but may have different SSIDs (network names) if you have customized them during the configuration. Extended networks Password: Share the same passwords as those of your host networks.

Frequently Asked Questions(FAQ)

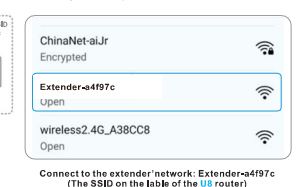
- Q1. What can I do if the login window does not appear?**
- If the computer is set to a static or fixed IP address, change the setting to obtain an IP address automatically.
 - Verify if http://192.168.11.1 is correctly entered in the web browser.
 - Make sure your computer is connected to the Mini Router's network.
 - Use another web browser and try again.
 - Reboot your router and try again.
 - Disable the network adapter used currently and then enable it again.
- Q2. What can I do if I cannot access the Internet?**
- Check if the internet is working properly by connecting a computer directly to the modem via Ethernet cable. If not, connect your internet provider.
 - Reboot your router and try again.
- Q3. How do I restore the router to its factory default setting?**
- While the router is powered on, press and hold the reset button on the rear panel of the router for approximately 5 seconds.
- Q4. Why set the repeater mode is unsuccessfully?**
- You may have typed in the router's wireless password incorrectly, please log in and check the wireless password.
 - The Mini router may be out of range, please move it closer to the router.
 - Please reset the Mini Router and go through the configuration again.
- A. If you need reset the extender, You need press and hold the reset button inside the tiny hole for 10 seconds.**

AP mode

In this mode, the router transforms your existing wired network to a wireless.
1. Connect Your Router

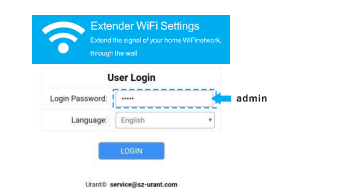


2. Connect to the U8 router
For Mobile phone users
1. Find the SSID (Network Name) printed on the label of the U8 router.
2. Connect your Mobile phone to the U8 router's network

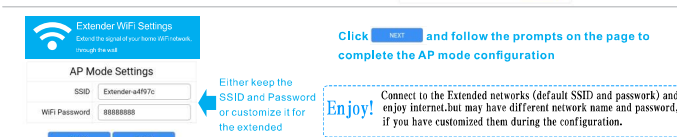
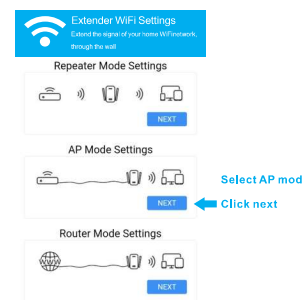


3. Login

1. Launch a web browser and type http://192.168.11.1 in the address field. (If the phone is connected to the repeater for the first time, the phone will automatically pop up the login page)
2. Use admin (all lowercase) for Password to log in.



4. Mode selection

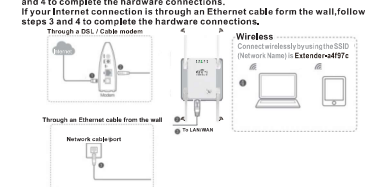


Frequently Asked Questions(FAQ)

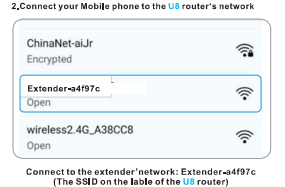
- Q1. What can I do if the login window does not appear?**
- If the computer is set to a static or fixed IP address, change the setting to obtain an IP address automatically.
 - Verify if http://192.168.11.1 is correctly entered in the web browser.
 - Make sure your computer is connected to the Mini Router's network.
 - Use another web browser and try again.
 - Reboot your router and try again.
 - Disable the network adapter used currently and then enable it again.
- Q2. What can I do if I cannot access the Internet?**
- Check if the internet is working properly by connecting a computer directly to the modem via Ethernet cable. If not, connect your internet provider.
 - Reboot your router and try again.
- Q3. How do I restore the router to its factory default setting?**
- While the router is powered on, press and hold the reset button on the rear panel of the router for approximately 5 seconds.
- Q4. Why set the repeater mode is unsuccessfully?**
- You may have typed in the router's wireless password incorrectly, please log in and check the wireless password.
 - The Mini router may be out of range, please move it closer to the router.
 - Please reset the Mini Router and go through the configuration again.
- A. If you need reset the extender, You need press and hold the reset button inside the tiny hole for 10 seconds.**

Router mode

1. Connect Your Router
If your Internet connection is through a DSL/Cable modem, follow steps 1, 2 and 4 to complete the hardware connections.
If your Internet connection is through an Ethernet cable from the wall, follow steps 3 and 4 to complete the hardware connections.

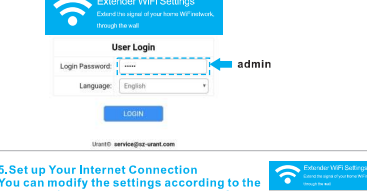


2. Connect to the U8 router
For Mobile phone users
1. Find the SSID (Network Name) printed on the label of the U8 router.
2. Connect your Mobile phone to the U8 router's network

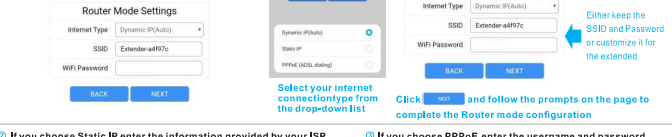
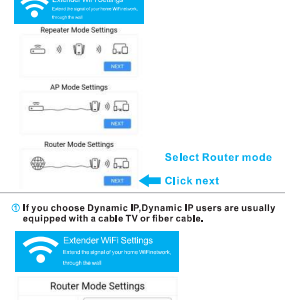


3. Login

1. Launch a web browser and type http://192.168.11.1 in the address field. (If the phone is connected to the repeater for the first time, the phone will automatically pop up the login page)
2. Use admin (all lowercase) for Password to log in.



4. Mode selection



- Q1. What can I do if the login window does not appear?**
- If the computer is set to a static or fixed IP address, change the setting to obtain an IP address automatically.
 - Verify if http://192.168.11.1 is correctly entered in the web browser.
 - Make sure your computer is connected to the Mini Router's network.
 - Use another web browser and try again.
 - Reboot your router and try again.
 - Disable the network adapter used currently and then enable it again.
- Q2. What can I do if I cannot access the Internet?**
- Check if the internet is working properly by connecting a computer directly to the modem via Ethernet cable. If not, connect your internet provider.
 - Reboot your router and try again.
- Q3. How do I restore the router to its factory default setting?**
- While the router is powered on, press and hold the reset button on the rear panel of the router for approximately 5 seconds.
- Q4. Why set the repeater mode is unsuccessfully?**
- You may have typed in the router's wireless password incorrectly, please log in and check the wireless password.
 - The Mini router may be out of range, please move it closer to the router.
 - Please reset the Mini Router and go through the configuration again.
- A. If you need reset the extender, You need press and hold the reset button inside the tiny hole for 10 seconds.**

This device complies with Part 15 of the FCC Rules. Operation is subject to the following two conditions: (1) this device may not cause harmful interference, and (2) this device must accept any interference received, including interference that may cause undesired operation

NOTE: This equipment has been tested and found to comply with the limits for a Class B digital device, pursuant to Part 15 of the FCC Rules. These limits are designed to provide reasonable protection against harmful interference in a residential installation. This equipment generates, uses and can radiate radio frequency energy and, if not installed and used in accordance with the instructions, may cause harmful interference to radio communications. However, there is no guarantee that interference will not occur in a particular installation.

If this equipment does cause harmful interference to radio or television reception, which can be determined by turning the equipment off and on, the user is encouraged to try to correct the interference by one or more of the following measures:

- Reorient or relocate the receiving antenna.
- Increase the separation between the equipment and receiver.
- Connect the equipment into an outlet on a circuit different from that to which the receiver is connected.
- Consult the dealer or an experienced radio/TV technician for help.

Warning: changes or modifications not expressly approved by the party responsible for compliance could void the user's authority to operate the equipment

Radiation Exposure Statement

This equipment complies with FCC radiation exposure limits set forth for an uncontrolled environment.

This equipment should be installed and operated with minimum distance 20cm between the radiator and your body.