



DJ89

3D Printer User Manual

3D打印机用户使用手册

V2.0

Dear Consumers,

Thank you for choosing our products. For the best experience, please read the instructions before operating the Printer. Our teams will always be ready to render you the best services. Please contact us via the phone number or e-mail address provided at the end when you encounter any problem with the Printer.

For a better experience in using our product, you can also learn how to use the printer in the following ways:

View the accompanied instructions and videos in the U disk.

尊敬的用户：

感谢您选择创想三帝的产品。为了您使用方便，请您在使用之前仔细阅读本说明书，并严格按照说明书的指示进行操作。

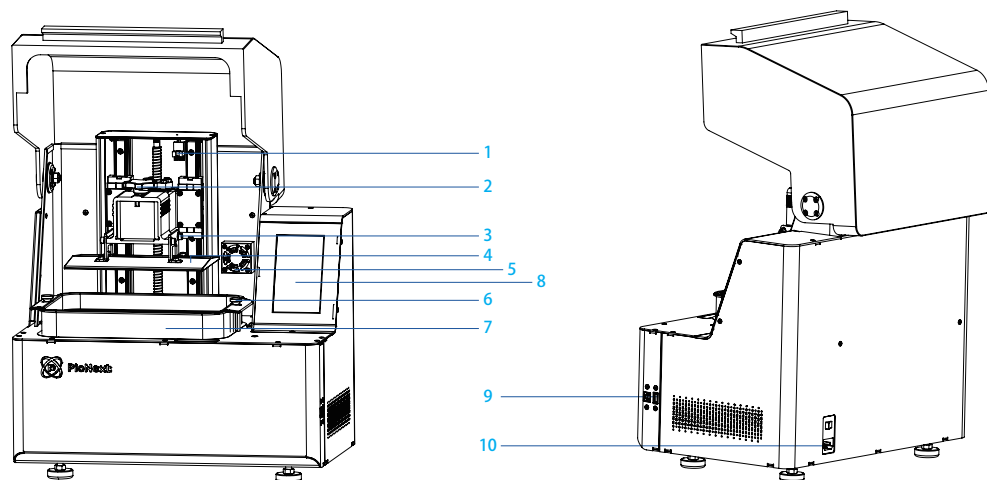
创想三帝团队时刻准备为您提供优质的服务。在使用过程中无论遇到什么问题，请按照说明书结尾所提供的电话、邮箱与我们进行联系。为了您能够更好地体验我们的产品，您还可以从以下方式获取设备操作知识：

随机使用说明：您可以在U盘内找到相关使用说明及视频。

- 1 Do not use the printer any way other than described herein in order to avoid personal injury or property damage.
- 2 Do not place the printer near any heat source or flammable or explosive objects. We suggest placing it in a well-ventilated, low-dust environment.
- 3 Do not expose the printer to violent vibration or any unstable environment, as this may cause poor print quality.
- 4 Please use recommended resin to in case damage of machine.
- 5 Do not use any other power cable except the one supplied. Always use a grounded three-prong power outlet.
- 6 Please do not open the plastic cover during usage, otherwise the printing will be interrupted.
- 7 Do not wear cotton gloves when operating the printer. Such cloths may become tangled in the printers moving parts leading to burns, possible bodily injury, or printer damage.
- 8 Please wait a moment after the print is finished. And please wear gloves to take out the print by tools.
- 9 Clean the printer frequently. Always turn the power off when cleaning, and wipe with a dry cloth to remove dust, adhered printing plastics or any other material off the frame, guide rails, or wheels. Use glass cleaner or isopropyl alcohol to clean the print surface.
- 10 Children under 10 years should not use the printer without supervision.
- 11 This machine is equipped with a security protection mechanism. Do not manually move the nozzle or printing platform mechanism manually while booting up, otherwise the device will automatically power off for safety.
- 12 Users should comply with the laws and regulations of the corresponding countries and regions where the equipment is located (used), abide by professional ethics, pay attention to safety obligations, and strictly prohibit the use of our products or equipment for any illegal purposes. Piocreat will not be responsible for any violators' legal liability under any circumstance.

- 1 请勿尝试任何使用说明中没有描述的方法来使用本机，避免造成意外的人身伤害和财产损失；
- 2 请勿将本机放置在易燃易爆物中或高热源附近，请将本机放置在通风、阴凉、少尘的环境内；
- 3 请勿将打印机放置在振动较大或者其他不稳定的环境内，机器晃动会影响打印机打印质量；
- 4 建议使用厂家推荐耗材，以免造成机器损坏；
- 5 请勿在安装过程中使用其他产品电源线代替，请使用本机附带的电源线，电源插头需接插在带有地线的三孔插座；
- 6 请勿在操作打印机工作时打开打印机面盖，以免影响打印；
- 7 请勿在操作打印机时戴棉手套，以防可动部件对人身造成卷入挤压和切割伤害；
- 8 在打印完毕后稍等片刻，戴上手套后再取下打印平台，借助工具将平台上的模型取下，清理时请勿直接用手触摸；
- 9 常做产品维护，定期在断电的情况下，用干布对打印机做机身清洁，拭去灰尘和粘结的打印材料、导轨上的异物；
- 10 年龄在10岁以下的儿童，请勿在没有人员监督的情况下使用本机，以免造成人身伤害；
- 11 本机设有安全保护机制，请勿在开机状态下手动快速移动喷头或打印平台机构，否则设备会自动断电关机保护；
- 12 使用者应遵守设备所在地（使用地）相应国家、地区法律法规，恪守职业道德，注意安全义务，严禁将我司的产品或设备使用在任何非法用途上。如有违反者所应承担的相关法律责任我司概不负责。

Introduction 设备简介	01-01
Parameters 设备参数	02-02
Parts List 零部件清单	03-03
Use the 3D Printer 使用3D打印机	04-12
Start Printing 首次打印	13-16
Wiring Connection 电路接线	17-17
Troubleshooting 故障检修	18-19
After-Sales Service Card 售后服务卡	20-22



1 Limit switch
限位开关

2 Metal screw
平台手拧螺丝

3 Leveling screw
调平螺钉

4 Building platform
成型平台

5 Air filter
空气过滤器

6 Metal screw
料槽手拧螺丝

7 Resin vat
料盘

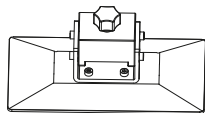
8 Touch screen
显示屏

9 USB port
USB接口

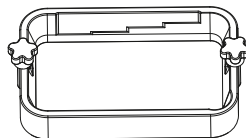
10 Power socket
电源接口

Basic Parameters 基本参数	
Model 型号	DJ89
Software language 中英切换	English 中文
Print method 打印方式	U disk U盘 / WIFI
X/Y-axis resolution X、Y分辨率	0.05mm 3840*2400
Z-axis resolution Z轴精度	0.01mm-0.1mm(layer thickness 即层厚)
Print speed 打印速度	1-4S/ layer 即每层打印时间
Special resin 专用耗材	Common rigid photosensivie resin, Standard resin, Hight hardness, High toughness, Biocompatible Resin, Castable Wax Resin, Dental model resin. 普通刚性光敏树脂、标准树脂、弹性树脂、高硬度、高韧性树脂、生物相容性树脂、铸造蜡树脂、牙模树脂
Light source configuration 光源配置	UV integrated lamp bead (wavelength 405nm) 紫外线集成灯珠(波长405nm)
Operation system 操作系统	windows 7 and above systems, mac systems windows 7以上系统, mac系统
Nominal power 额定功率	250W
Print size 成型尺寸	192*120*100mm (length*width * height) 192*120*100mm (长*宽*高)
Machine size 设备尺寸	432*292*456mm
Package size 包装尺寸	540*385*530mm
Machine weight 机器重量	21KG
Gross weight 机器毛重	23KG
Display screen 显示屏幕	5inch 5英寸

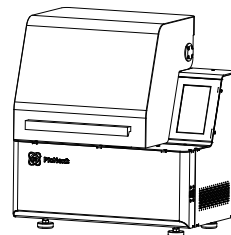
3. Package Content 零部件清单



① Print platform | 打印平台 x 1

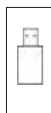


② Resin vat | 料盘 x 1

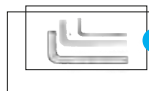


③ 3D printer | 打印机 x 1

Tool list 工具包清单



① U disk x 1
U盘



② Screwdrivers x 1set
螺丝刀工具包



③ Brush x 1
油漆刷



④ Plastic blade x 1
塑胶铲刀



⑤ Resin filter x 4
纸漏斗



⑥ Release film x 1
离型膜



⑦ Metal blade x 1
金属铲刀



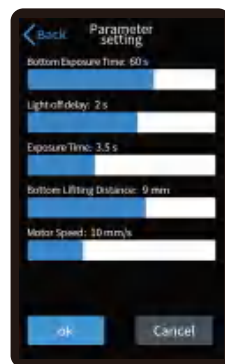
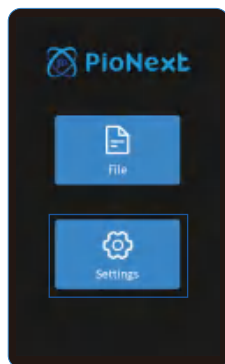
⑧ Power cord x 1
电源线



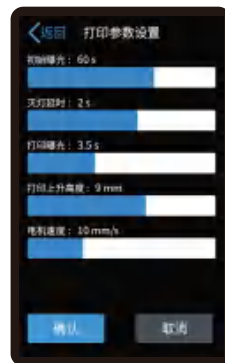
⑨ Calibration card x 1
校准卡片

Tips: the above accessories are for reference only, in kind prevail! 注意: 以上配件仅供参考, 请以实物为准!

Setting



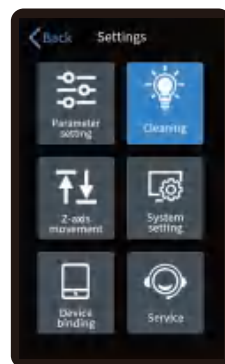
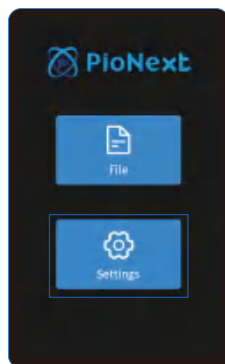
设置



Note: The current interface is for reference only, due to the continuous upgrading of functions, the actual to the official website of the latest firmware UI as the standard.

注意：当前界面仅供参考，由于功能不断升级，实际以官网最新固件UI为准。

Setting

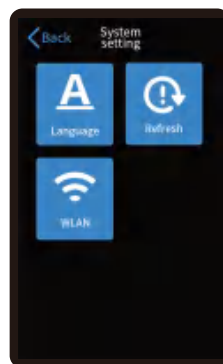
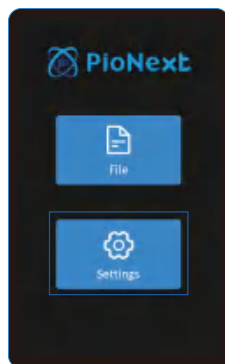


设置



Note: The current interface is for reference only, due to the continuous upgrading of functions, the actual to the official website of the latest firmware UI as the standard.
 注意：当前界面仅供参考，由于功能不断升级，实际以官网最新固件UI为准。

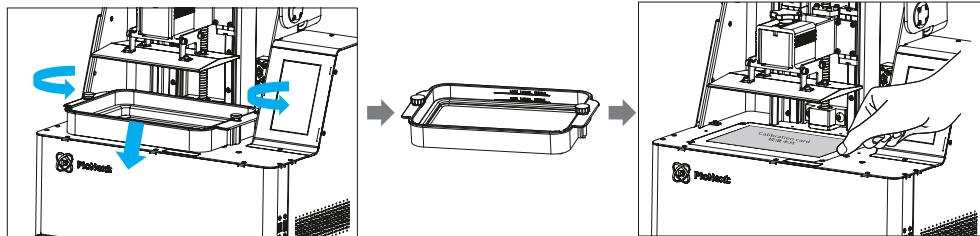
Setting



设置



Note: The current interface is for reference only, due to the continuous upgrading of functions, the actual to the official website of the latest firmware UI as the standard.
 注意：当前界面仅供参考，由于功能不断升级，实际以官网最新固件UI为准。



1. First raise the platform, then loosen rubber screws on the left and right sides of the resin vat, and take out the resin vat.
进行打印平台的校准，首先上升平台，拧松料槽左右两侧胶头手拧螺丝，将料槽取出。

2. Place the calibration card on the printing screen.
将校准卡片贴合打印屏

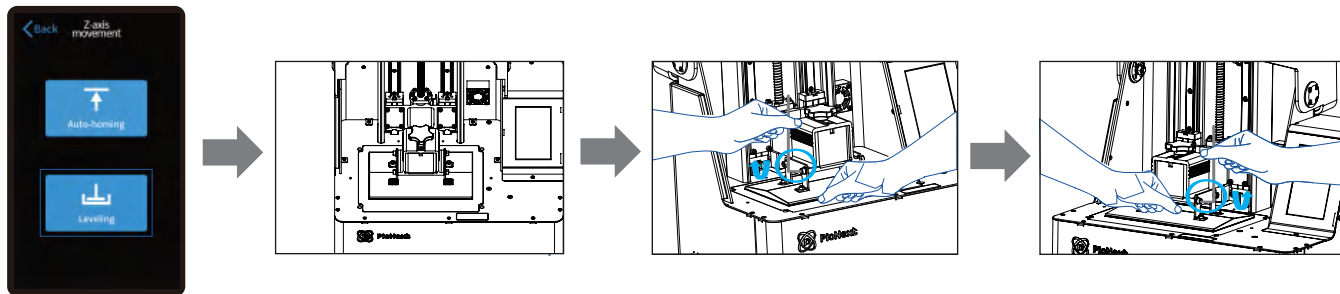


Note: The printing platform has been leveled at the factory. If it needs leveling due to transportation or other reasons, please follow the steps below to adjust the printing platform.

注意：打印平台出厂时已调平，若因运输或其他原因需要调平，可以进行以下步骤进行打印平台调平。

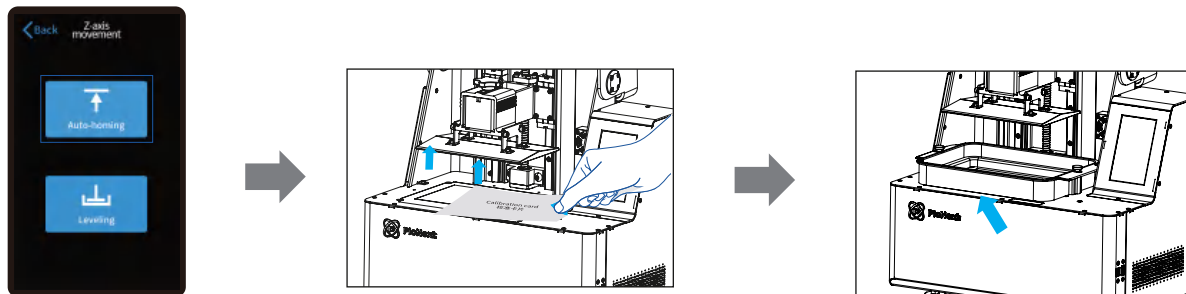
5. Level Platform 调平台 2

If the platform does not stick to the print screen, do as the following:
如果没有贴紧打印屏, 请进行如下操作:



1. After unscrewing the leveling screws, press “Leveling” to keep the platform and the print screen parallel.

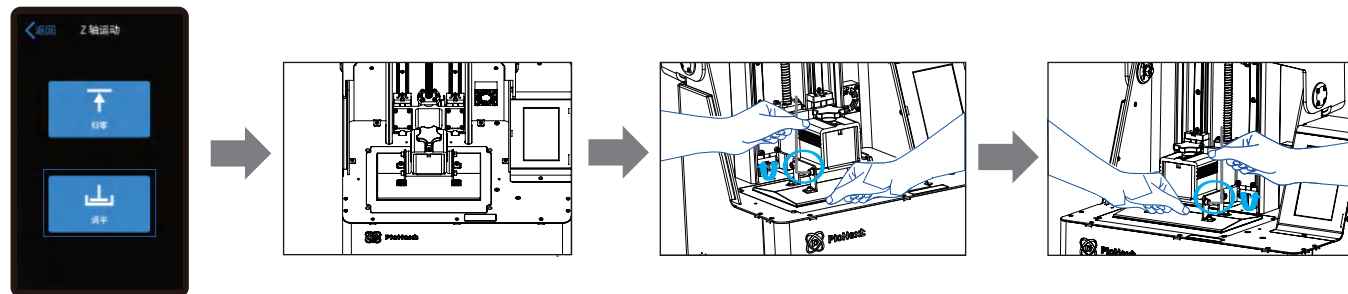
2. Gently press the platform and tighten 4 screws clockwise, and the platform can be leveled successfully.



3. Press “Auto-homing”, move up the z-axis to a proper position, remove the calibration card and install the resin vat back, and then tighten the fixing screws at both ends of the resin vat.

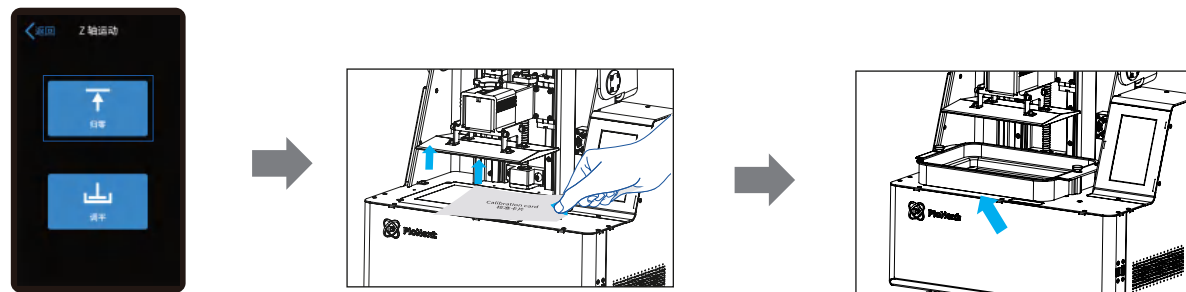
5. Level Platform 调平台 2

If the platform does not stick to the print screen, do as the following:
如果没有贴紧打印屏, 请进行如下操作:



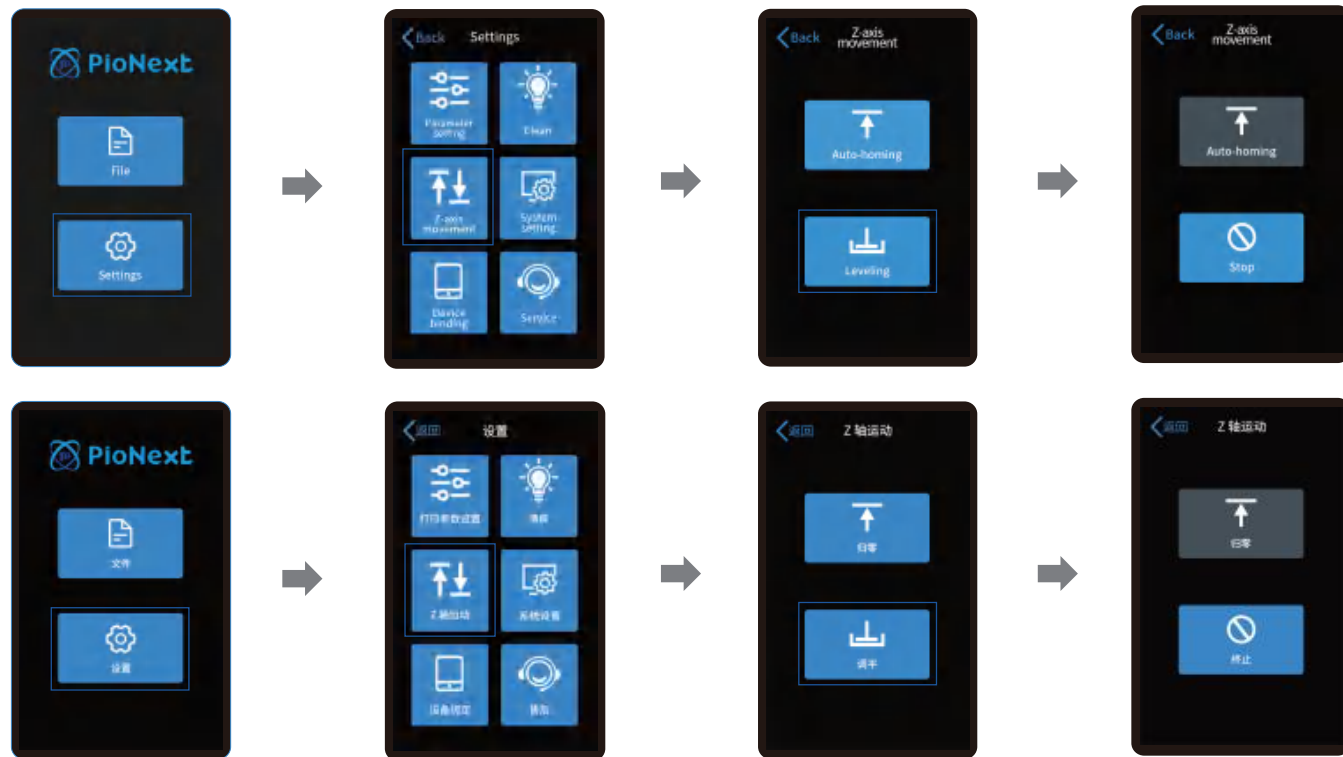
1. 拧松调平螺丝后, 按触摸屏“调平”, 保持平台与底板部分平衡。

2. 轻轻压平台两端, 顺时针拧紧4个平台螺丝, 即平台调平成功。



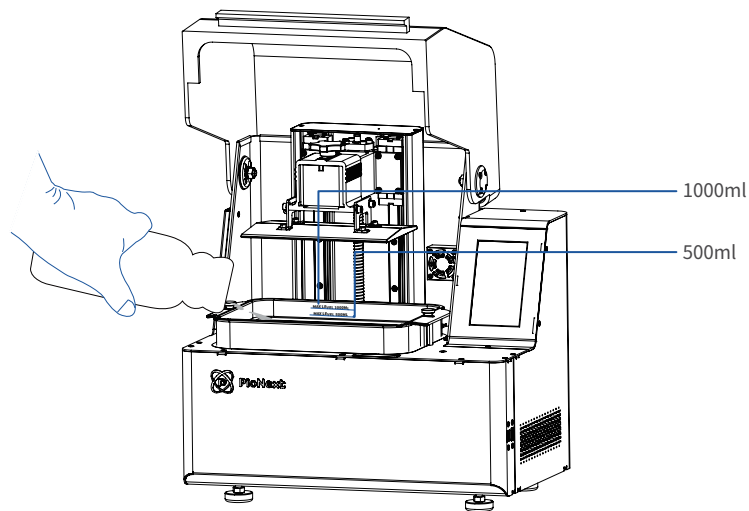
3. 按触摸屏“归零”, 控制Z轴上移, 至合适位置, 将校准卡纸取出, 放入料盘, 对准料盘两端螺孔后, 旋紧两端的料盘固定螺丝。

5. Level Platform 调平平台2



Note: The current interface is for reference only, due to the continuous upgrading of functions, the actual to the official website of the latest firmware UI as the standard.
注意：当前界面仅供参考，由于功能不断升级，实际以官网最新固件UI为准。

Pour the UV photosensitive resin into the resin vat. The slot capacity is 500ml/1000ml.
将3D打印机 UV 光敏树脂倒入料盘,槽位容量分别:500ml/1000ml。



Tips: How to change resin:

Take out the resin vat slowly, pour out the remaining resin into the container, clean the resin vat, pour in new resin, and then install the resin vat to the machine.

提示: 如何更换耗材?

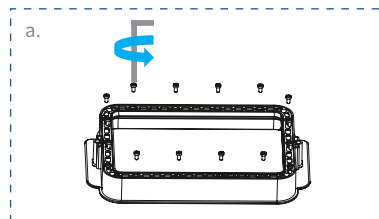
将料盘缓缓取出,把剩余树脂倒入容器,清洗干净料盘,重新倒入新树脂,再把料盘安装到机器即可。



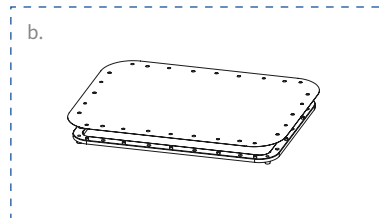
Caution : Resin may cause skin irritation or an allergic skin reaction. Please wear gloves before use to avoid direct contact with the skin.

警示: 请戴上手套方可进行装料, 光敏树脂为刺激性材料, 避免接触到皮肤。

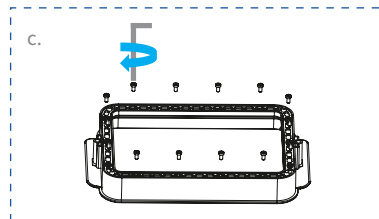
Installation steps 安装步骤



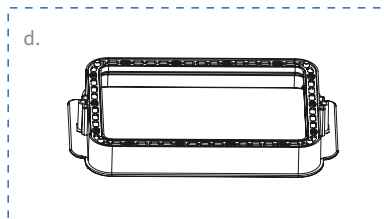
- a. First, remove the 14 screws at the bottom of the vat and take down the old release film.
首先拆卸料槽底部的14颗螺丝,取出坏的离型膜。



- b. Prepare the new release film, peel off the the protective films on both sides of the release film. Align the holes and fit the release film on the clamping ring.
撕掉新的离型膜两个面上的保护膜,对好孔然后将离型膜套在压圈上的柱子上。



- c. Finally, place the film-ring assembly back into the vat frame gently, then intall and tighten the fixing screws diagonally.
最后将套好离型膜的压圈放回料槽,安装14颗螺丝并采用对角方式锁紧。
- d. The installed release film is as shown.
安装好的离型膜如下图。



Parameters 规格参数



尺寸:190mm*266mm
(Size)

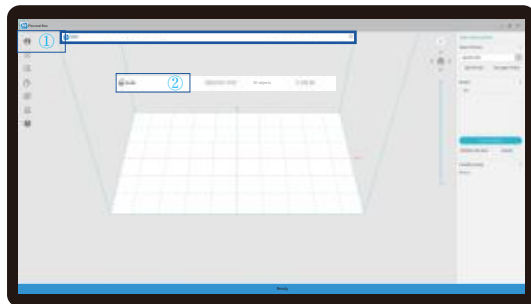


厚度:0.15-0.2mm
(Thickness)

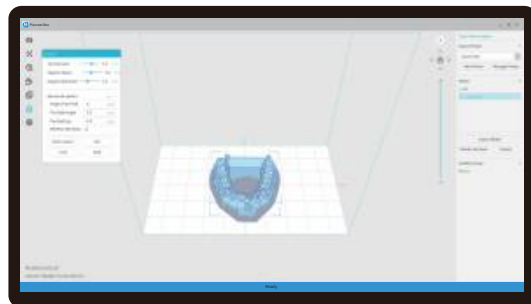


透光率:95%
(Light Transmittance)

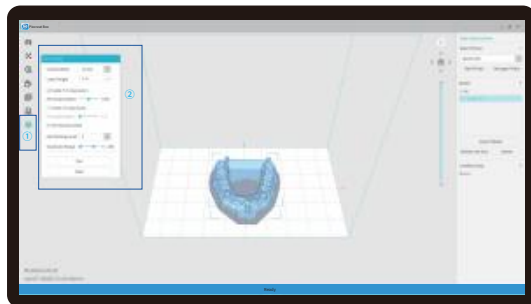
1. Slice



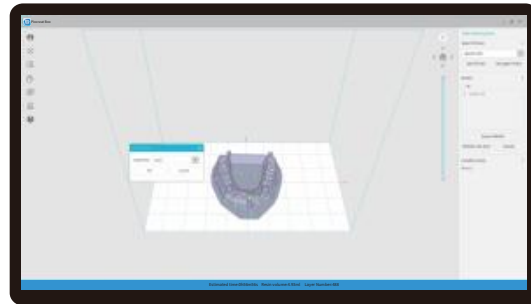
1. Open the slice software of LCD 3D printer, click “open” on the left of the screen and add model file.



2. If the model needs to add support, click the upper right icon to set corresponding parameters.

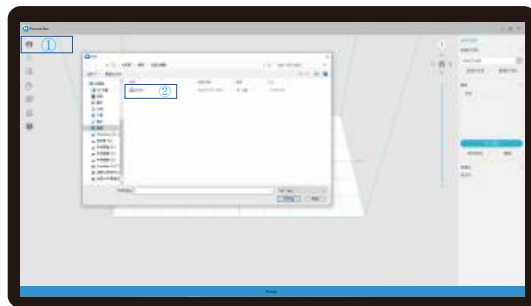
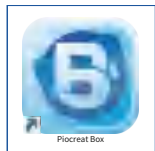


3. Click icon ①→Setting slice printing parameters②→Click “Slice” (recommend to set parameters of bottom layer as 5-20).

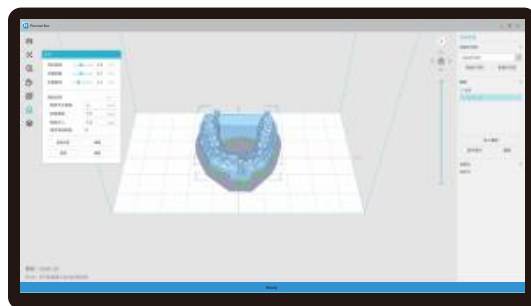


4 waiting for slice to be finished→save the sliced file (You are welcome to find more details of slicing tutorial on the official website www.piocreat3d.com)

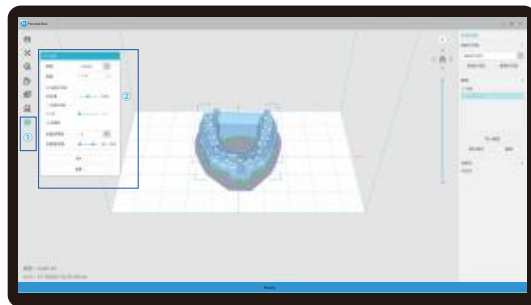
1. 切片



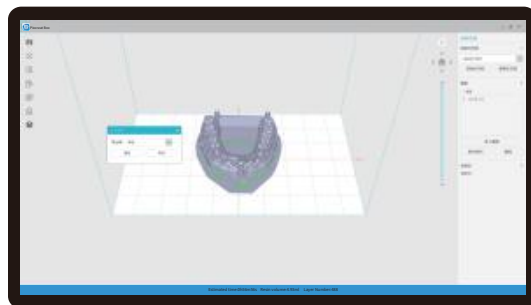
1. 打开LCD光固化3d打印切片软件, 界面左方点击“打开”添加模型文件;



2. 根据模型如需添加支架, 点击右上方图标, 设置相应参数;

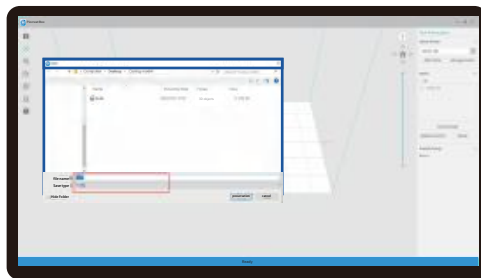


3. 点击图标①→设置切片打印参数②→点击切片

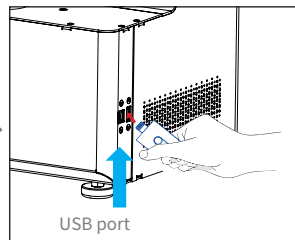


4. 等待完成切片后→另存切片好的文件。
(*切片教程详见官网切片视频www.szc3d.com)

2. Print

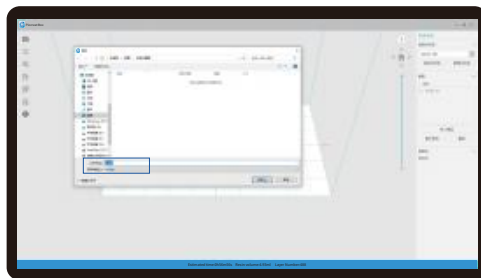


1. Generate cxdlp file, and save the file to U disk.

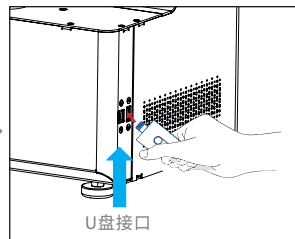


2. Insert the U disk → press the print button.

2. 打印



1. 生成 cxdlp 文件 → 保存文件到 U 盘

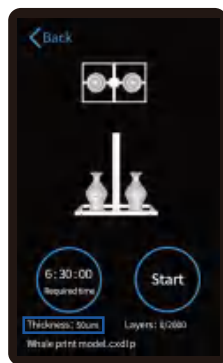
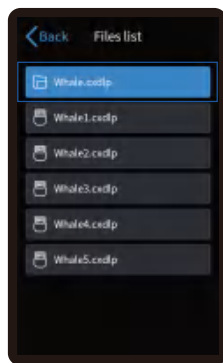
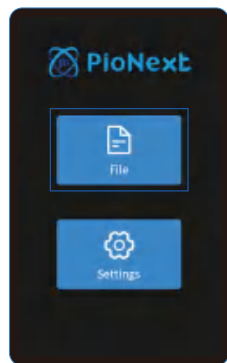


2. 插入 U 盘 → 按下打印按键



Warning: Please don't insert or remove U disk during printing.
警告：在打印过程中，禁止插拔 U 盘。

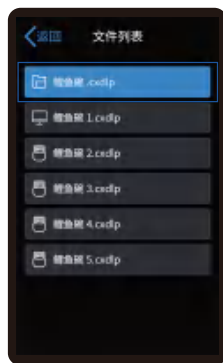
7. Start Printing 首次打印



1. select files.

2. Select the file to be printed and press "Start".

3. Printing.

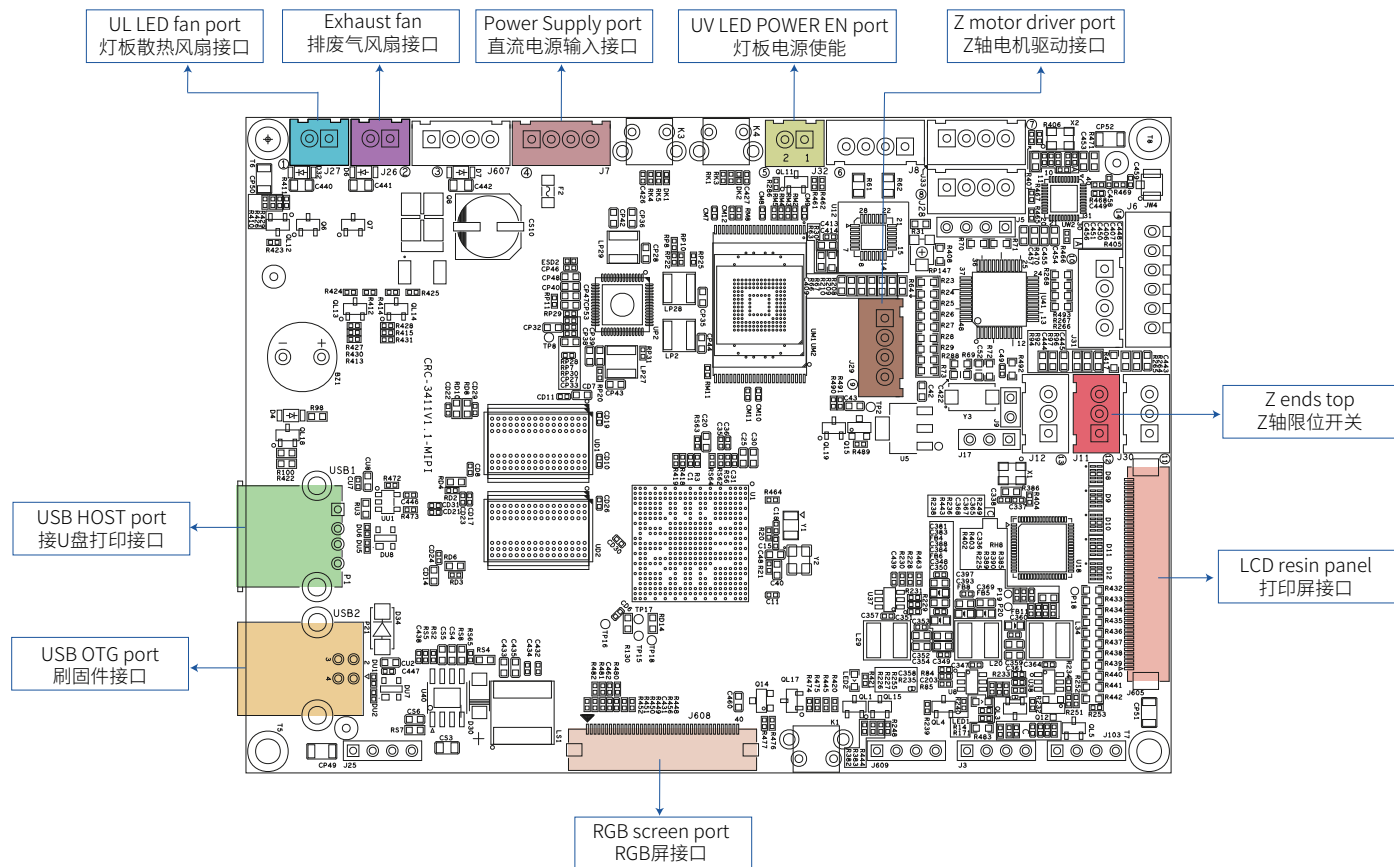


1. 选择文件

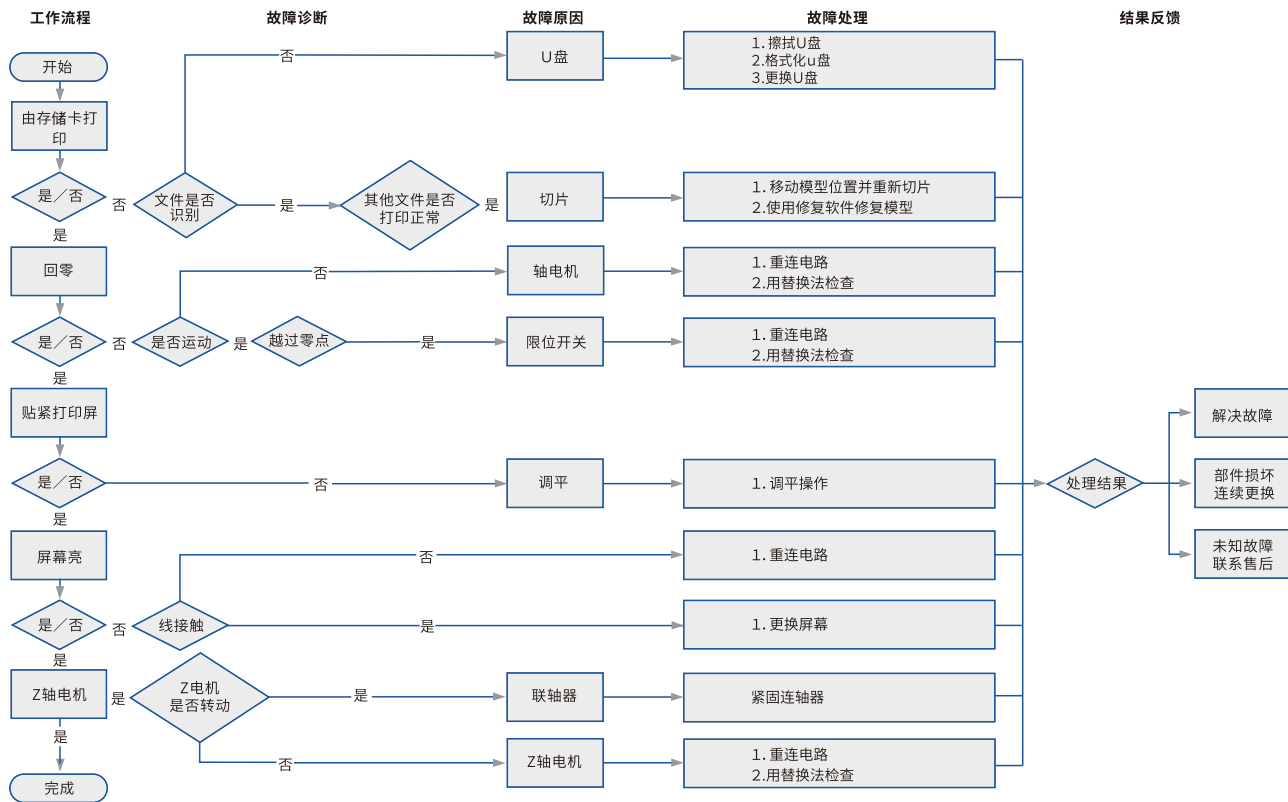
2. 选中需要打印的文件, 按下打印键

3. 正在打印中

8.Wiring Connection电路接线







Warranty Policy ←

- 1-year Limited Warranty since the date of product purchase.
- No Warranty for the Release Film and Product Gift (U disk, Gloves, Screwdriver, Paper funnel, Brush, etc.)



Scan the code to know more

What Is Covered? ←

Any defects in material, workmanship of product will be covered until you provide any relating documents and information, including but not limited to:

- User of the product are in the country of purchase
- Defective product is a PIOCREAT product
- Proof of Purchase

What Is Not Covered? ←

PIOCREAT does not guarantee the service as a result of:

1. The proof of purchase being altered or made illegible.
2. The product label or serial number on the product being altered or made illegible.
3. Normal wear of accessories or consumables for use as release film.
4. Malfunction or damage caused by personal retrofitting, or improper installation and usage.
5. Malfunction or damage caused by use in non-recommended working environments.
6. Malfunction or damage caused by overuse (overload) or wrong maintenance (damp, mildew, etc.)
7. Malfunction or damage caused by Force Majeure (fire hazard, earthquake, lightning and floods, etc.)
8. Malfunction or damage caused by the use of other brand parts or consumable.

Technical Support ←

Please enjoy our technical support of the whole lifetime (Except technical problem beyond product itself) after purchase the product while product documents as user manual attached in U disk for instruction.

Please provide product Serial Number when apply for technical support.

Kindly Notification ←

Please read the user manual and warranty card carefully before the use. For any service, Please priorly contact local seller or contact us via [Email: after@piocreat 3d.com](mailto:after@piocreat3d.com) for support. See www.piocreat3d.com / for specific warranty information about your product and procedures to act on a warranty claim.

退/换货政策 <

一、满足退/换货时间

- ① 电商平台购买支持7天无理由退货，即产品签收时间起算，满168小时为7天。
- ② 因机器品质问题，非人为损坏的情况，签收后15天内可申请退换货。
- ③ 如另通过合同购买且有签订退换货时间的以合同为准，运费标准以售后服务卡为准。

二、产品外观要求无损伤、划痕、污迹、裂纹、变形等；随机配件、工具、赠品、包装等要求齐全完好。经我司售后检测判定，如退/换货收到的产品外观损坏，配件不全或因未按照原包装打包邮寄导致的问题，客户需承担相应的费用，具体损耗及费用需寄回后经专业售后人员进行检测核算。

三、非质量问题退/换货，如使用了耗材，客户需承担耗材的费用；由于包装纸盒或打包木架返厂后是无法二次使用的，因此客户需承担包装费；具体损耗及费用需寄回后经专业售后人员进行检测核算。

四、因不喜欢、不想要、拍错、使用不当、不满意产品等原因造成的退换货，退回运费需客户自行承担。

五、换货时，客户需先将机器寄回，公司收到机器后会及时安排发货。

退/换货运费标准 <

类型	分类	寄回运费	出库运费
换货	非品质问题	客户承担	公司承担
	品质问题	公司承担	公司承担
退货	非品质问题	客户承担	/
	品质问题	公司承担	/

保修政策 <



扫码了解更多

一、质保期

- ① 整机保修一年。
- ② 离型膜、赠品（U盘、螺丝刀、手套、油漆刷、纸漏斗、铲刀等）无保质期。收到产品后，请核对说明书部件清单，如赠品有缺少或品质问题，7天内可联系售后申请补发或更换。

二、质保期内保修：经我司售后检测判定为品质问题，公司提供免费维修服务；如果是人为导致的非品质问题，客户需承担相应更换的配件费用，无需承担维修费。

三、质保期外维修：由客户承担维修过程中产生的人工费、配件费、包装费、来回运费等所有费用。

返厂维修运费标准 <

类型	返厂时间	返厂运费	出库运费
非品质问题	三个月以内	客户承担	公司承担
	三个月以上	客户承担	客户承担
品质问题	一个月以内	公司承担	公司承担
	一至三个月	客户承担	公司承担
	三个月以上	客户承担	客户承担

10.售后服务卡

下列情况不列入质保范围 <

- ① 无法提供有效的机器制造编码、购买凭证和保修卡，或信息被涂改、字迹模糊、无法辨认等。
- ② 正常的使用磨损而造成的部件损坏。
- ③ 未按说明书指导，不正确安装、使用及操作，或私自对机器进行改装而造成机器故障或损坏。
- ④ 在非机器规定的工作环境下使用而造成机器故障或损坏。
- ⑤ 由于滥用（超出工作负荷等）或维护不当（受潮、进液、浸泡、发霉等）造成机器故障或损坏。
- ⑥ 由于不可抗因素（如：火灾、地震、雷击、水灾等）造成机器故障或损坏。
- ⑦ 由于使用其他品牌部件或低质量耗材造成的设备故障或损坏。
- ⑧ 未经官方授权的服务点维修过的机器。

技术支持 <

凡购买创想三帝3D打印机，均可享受（除产品本身之外）终生技术支持，如超越产品本身的技术问题恕不提供。本产品在U盘卡中有相关使用资料，如在使用过程中遇到技术问题，请联系售后客服帮您解决。

温馨提示 <

- ① 使用机器前请仔细阅读说明书和售后服务卡。
- ② 质保期内维修过的机器后仍享有剩余质保服务。
- ③ 退/换货及返厂维修需按原包装寄回机器，以免快递过程中产生其他问题，建议妥善保存好产品原包装。
- ④ 申请质保服务时，需提供产品制造编码、购买凭证、订单号、保修卡、发票等信息。如未提供，公司有权拒绝提供质保服务。
- ⑤ 服务时间：周一至周五，9:00-20:30；周六至周日，9:00-18:30（法定节假日除外）。热线：0755-2103-9743，邮箱：after@piocreat3d.com

Notes 笔记

This image shows a single sheet of white paper with horizontal ruling lines. The lines are evenly spaced and run across the width of the page. There are no margins, text, or other markings on the paper.



WARRANTY

Before returning the product and filling in a warranty, please contact after-sale person for going through after-sale formality. And attach this warranty card along with the returned machine.

Repair ☐

Change ☐

Return ☐

Name: _____ Telephone: _____

Address: _____

Serial Number: _____ Order Number: _____

Channel: Platform ☐ Offline ☐

Date of purchase Day _____ Mon. _____ Year _____

Malfunction And Damage Depiction Or Return And Change Reasons\ Suggestions:

Repair Records:



Note: Client need filling in basic infor. and return reasons. Repair records shall retain for technicians.



产品保修卡



产品寄回前请先联系售后专员，为正常进行售后处理，请务必填写此卡，并随机器寄回。

返修 ☐

换货 ☐

退货 ☐

客户名称：_____联系电话：_____

收件地址：_____

机器制造编码：_____订单编号：_____

购买渠道：电商平台 ☐ 线下 ☐

购买日期：_____年_____月_____日

故障描述或退、换货原因和建议：

维修情况记录：



温馨提示：基本信息及返厂原因为客户必填项，维修情况记录部分为维修人员填写项。



Due to the differences between different machine models, the physical objects and the final images can differ. The final explanation rights shall be reserved by **Shenzhen Piocreat 3D Technology Co., Ltd.**

因每款机型不同，实物与图可能有所差异，请以实物为准，最终解释归深圳市创想三帝科技有限公司所有。



Scan To Learn More
扫码了解更多

Shenzhen Piocreat 3D Technology Co., Ltd.

Add: 12/F, Block 3, JinChengYuan, Longhua District, Shenzhen, China, 518109

Tel: +86 755-2103 9743

Official Website: www.szc3d.com www.piocreat3d.com

E-mail: after@piocreat3d.com hello@piocreat3d.com

深圳市龙华区金城园工业区第三栋12层

服务热线 0755-2103 9743

公司网站 www.szc3d.com www.piocreat3d.com



Requirement

changes or modifications not expressly approved by the party responsible for compliance could void the user's authority to operate the equipment.

This device complies with Part 15 of the FCC Rules. Operation is subject to the following two conditions:

- (1) this device may not cause harmful interference, and
- (2) this device must accept any interference received, including interference that may cause undesired operation.

Note: This equipment has been tested and found to comply with the limits for a Class B digital device, pursuant to Part 15 of the FCC Rules. These limits are designed to provide reasonable protection against harmful interference in a residential installation. This equipment generates, uses, and can radiate radio frequency energy, and if not installed and used in accordance with the instructions, may cause harmful interference to radio communications. However, there is no guarantee that interference will not occur in a particular installation. If this equipment does cause harmful interference to radio or television reception, which can be determined by turning the equipment off and on, the user is encouraged to try to correct the interference by one or more of the following measures:

- Reorient or relocate the receiving antenna.
- Increase the separation between the equipment and receiver.
- Connect the equipment into an outlet on a circuit different from that to which the receiver is connected.
- Consult the dealer or an experienced radio/TV technician for help.