



DJ89 PLUS

3D Printer User Manual

3D打印机用户使用手册

V2.0

Dear Consumers,

Thank you for choosing our products. For the best experience, please read the instructions before operating the Printer. Our teams will always be ready to render you the best services. Please contact us via the phone number or e-mail address provided at the end when you encounter any problem with the printer.

For a better experience in using our product, you can also learn how to use the printer in the following ways:

- 1) View the accompanied instructions and videos in the U disk.
- 2) Visit our official website (www.piocreat3d.com) to find relevant software/hardware information, contact details and operation and maintenance instructions.

尊敬的用户：

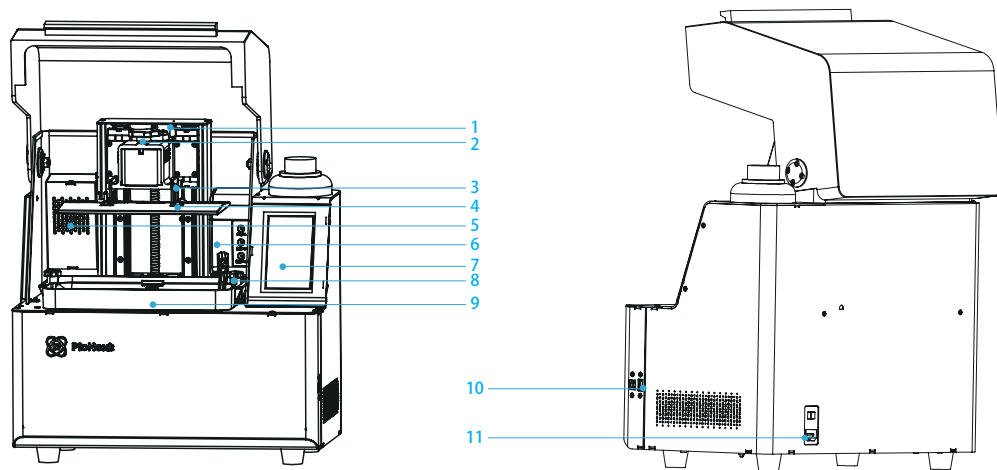
感谢您选择创想三帝的产品。为了您使用方便，请您在使用之前仔细阅读本说明书，并严格按照说明书的指示进行操作。创想三帝团队时刻准备为您提供优质的服务。在使用过程中无论遇到什么问题，请按照说明书结尾所提供的电话、邮箱与我们联系。为了您能够更好地体验我们的产品，您还可以从以下方式获取设备操作知识：

- 1) 随机使用说明：您可以在U盘内找到相关使用说明及视频。
- 2) 可以登陆创想三帝官网(www.szc3d.com)寻找相关软硬件、联系方式、设备操作、设备保养等信息。

- 1 Do not use the printer any way other than described herein in order to avoid personal injury or property damage.
- 2 Do not place the printer near any heat source or flammable or explosive objects. We suggest placing it in a well-ventilated, low-dust environment.
- 3 Do not expose the printer to violent vibration or any unstable environment, as this may cause poor print quality.
- 4 Please use recommended resin for not to damage the machine.
- 5 Do not use any other power cable except the one supplied. Always use a grounded three-prong power outlet.
- 6 Please do not open the plastic cover during usage, otherwise the printing will be interrupted.
- 7 Do not wear cotton gloves when operating the printer, avoiding the burns, injury and machine damage caused by the moving parts.
- 8 Please wait a moment after the print is finished. And please wear gloves to take out the print by tools.
- 9 Clean the printer frequently. Always turn the power off when cleaning, and wipe with a dry cloth to remove dust, adhered printing plastics or any other material off the frame, guide rails, or wheels. Use glass cleaner or isopropyl alcohol to clean the print surface.
- 10 Children under 10 years should not use the printer without supervision.
- 11 This machine is equipped with a security protection mechanism. Do not manually move the nozzle or printing platform mechanism manually while booting up, otherwise the device will automatically power off for safety.
- 12 Users should comply with the laws and regulations of the corresponding countries and regions where the equipment is located (used), abide by professional ethics, pay attention to safety obligations, and strictly prohibit the use of our products or equipment for any illegal purposes. Piocreat will not be responsible for any violators' legal liability under any circumstance.

- 1 请勿尝试任何使用说明中没有描述的方法来使用本机，避免造成意外的人身伤害和财产损失；
- 2 请勿将本机放置在易燃易爆物中或高热源附近，请将本机放置在通风、阴凉、少尘的环境内；
- 3 请勿将打印机放置在振动较大或者其他不稳定的环境内，机器晃动会影响打印机打印质量；
- 4 建议使用厂家推荐耗材，以免造成机器损坏；
- 5 请勿在安装过程中使用其他产品电源线代替，请使用本机附带的电源线，电源插头需接插在带有地线的三孔插座；
- 6 请勿在操作打印机工作时打开打印机面盖，以免影响打印；
- 7 请勿在操作打印机时戴棉手套，以防可动部件对人身造成卷入挤压和切割伤害；
- 8 在打印完后稍等片刻，戴上手套后再取下打印平台，借助工具将平台上的模型取下，清理时请勿直接用手触摸；
- 9 常做产品维护，定期在断电的情况下，用干布对打印机做机身清洁，拭去灰尘和粘结的打印材料、导轨上的异物；
- 10 年龄在10岁以下的儿童，请勿在没有人员监督的情况下使用本机，以免造成人身伤害；
- 11 本机设有安全保护机制，请勿在开机状态下手动快速移动喷头或打印平台机构，否则设备会自动断电关机保护；
- 12 使用者应遵守设备所在地（使用地）相应国家、地区法律法规，恪守职业道德，注意安全义务，严禁将我司的产品或设备使用在任何非法用途上。如有违反者所应承担的相关法律责任我司概不负责。

Introduction 设备简介	01-01
Parameters 设备参数	02-02
Parts List 零部件清单	03-03
Interface Information 界面信息	04-04
Level Platform 调平平台	05-08
Guidance on the use of the feed system/module 供料系统使用指南	09-11
Guidance on the use of Pre-Heat 成型室加热功能使用指南	12-12
Load Resin 装料	13-13
Release Film Instructions 离型膜安装说明	14-14
USB Disk Printing U盘打印	15-18
WIFI Print 无线打印	19-20
Wiring Connection 电路接线	21-21
Troubleshooting 故障检修	22-23
After-Sales Service Card 售后服务卡	24-26



1 Limit switch
限位开关

2 Platform screws
平台手拧螺丝

3 Leveling screw
调平螺钉

4 Building platform
成型平台

5 Heating device
加热装置

6 Feeding module
上料模块

7 Touch screen
显示屏

8 Tank screws
料槽手拧螺丝

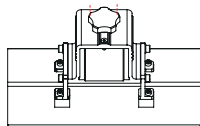
9 Resin vat
料盘

10 USB port
USB接口

11 Power port
电源接口

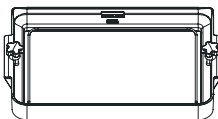
Basic Parameters 基本参数	
Model 型号	DJ89 PLUS
Automatic feeding 自动上料	Support 支持
Molding chamber heating 成型室加热	Support, temperature range 20-45°C 支持，温度区间20-45°C
Print method 打印方式	U disk U盘 / WIFI
X/Y-axis resolution X、Y分辨率	7680*4320
Z-axis resolution Z轴精度	0.01-0.1mm(layer thickness 即层厚)
Print speed 打印速度	1-4S/ layer 即每层打印时间
Special resin 专用耗材	Castable Wax Resin, Dental model resin, Common rigid photosensivie resin, Standard resin, Hight hardness, High toughness, Biocompatible Resin. 铸造蜡树脂、牙模树脂、普通刚性光敏树脂、标准树脂、弹性树脂、高硬度、高韧性树脂、生物相容性树脂
Light source configuration 光源配置	UV integrated lamp bead (wavelength 405nm) 紫外线集成灯珠(波长405nm)
Operation system 操作系统	Win7 or above X64, Mac Win7及以上64位系统（不支持32位），支持Mac
Nominal power 额定功率	500W
Display screen 显示屏幕	5inch 5英寸
Print size 成型尺寸	228 x 128 x 100mm (length x width x height) 228 x 128 x 100mm（长 x 宽 x 高）
Machine size 设备尺寸	450 x 290 x 500mm
Package size 包装尺寸	611 x 386 x 666mm
Machine weight 机器重量	21.75KG
Gross weight 机器毛重	26.28KG

3. Package Content 零部件清单



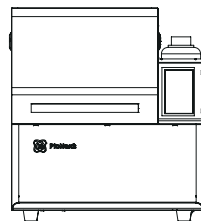
1

Print platform | 打印平台 x 1



2

Resin vat | 料盘 x 2



3

3D printer | 打印机 x 1

Tool list 工具包清单



1 U disk x 1
U盘



2 Screwdrivers x 1set
螺丝刀工具包



3 Brush x 1
油漆刷



4 Plastic blade x 1
塑胶铲刀



5 Resin filter x 4
纸漏斗



6 Metal blade x 1
金属铲刀



7 Power cord x 1
电源线



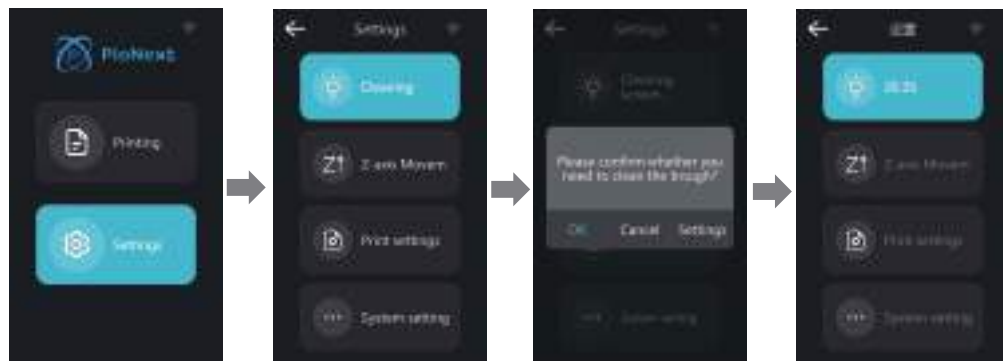
8 Disposable latex
gloves x 1
一次性乳胶手套



9 Calibration card x 1
校准卡片

Tips: the above accessories are for reference only, in kind prevail! 注意：以上配件仅供参考，请以实物为准！

4. Interface Information 界面信息



Screen clearing: material tank cleaning;

Z-axis movement: Back to Zero and leveling;

Print settings: printing parameters, device control, feeding system and Pre-Heat;

System settings: set WALN, set language and region, upgrade firmware version (local upgrade & network upgrade); view device information, restore factory settings.



清屏: 点击可进行料槽清理;

Z轴运动: 点击可设置归零和调平;

打印设置: 点击可进行打印参数、设备控制、供料系统、成型室加热等功能设置;

系统设置: 点击可进行设置WALN、设置语言及区域、升级固件版本 (本地升级&网络升级)、查看设备信息、恢复出厂设置等功能设置。

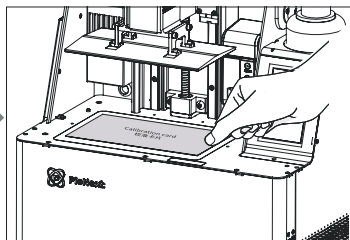
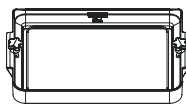
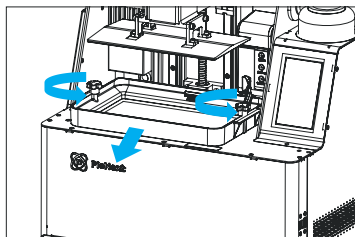


Note: Check whether the light source is normal when clearing the screen. The UI is only for reference only and shall be subject to the actual UI.
注意: 清屏时检查光源是否正常。界面仅供参考, 实际以固件UI为准。



Note: The printing platform has been leveled at the factory. If it needs leveling due to transportation or other reasons, please follow the steps below to adjust the printing platform.

注意: 打印平台出厂时已调平, 若因运输或其他原因需要调平, 可以进行以下步骤进行打印平台调平。

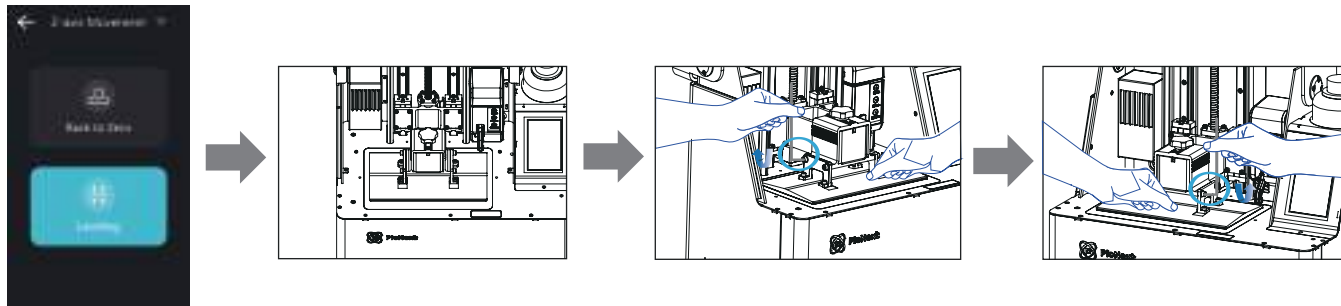


1. First raise the platform, then loosen rubber screws on the left and right sides of the resin vat, and take out the resin vat.
进行打印平台的校准, 首先上升平台, 拧松料槽左右两侧胶头手拧螺丝, 将料槽取出。

2. Place the calibration card on the printing screen.
将校准卡片贴合打印屏

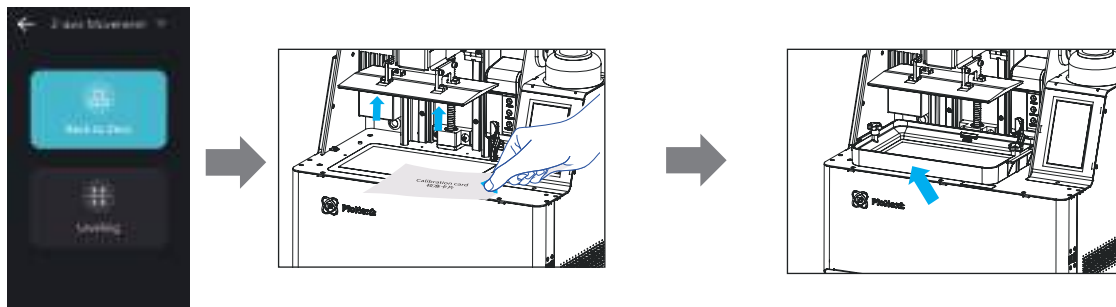
5. Level Platform 调平台

If the platform does not stick to the print screen, do as the following:
如果没有贴紧打印屏, 请进行如下操作:



1. After unscrewing the leveling screws, place the calibration card on the printing platform press "Leveling" to keep the platform and the print screen parallel.

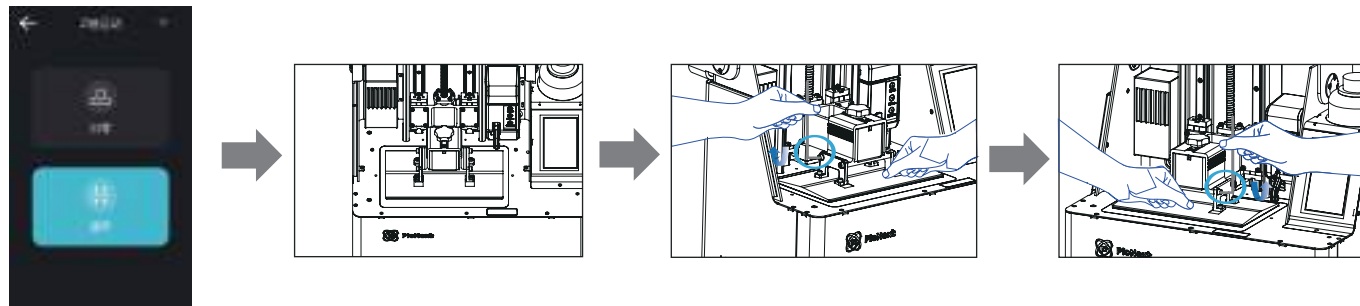
2. Gently press the platform and tighten 4 screws clockwise, and the platform can be leveled successfully.



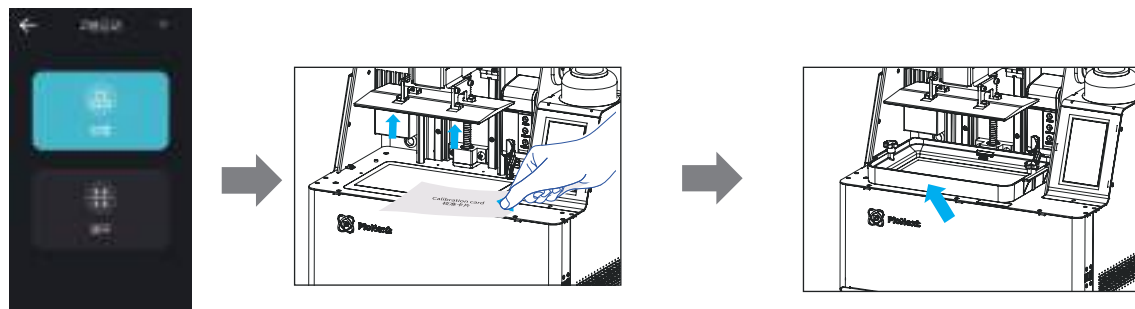
3. Press "Auto-homing", move up the z-axis to a proper position, remove the calibration card and install the resin vat back, and then tighten the fixing screws at both ends of the resin vat.

5. Level Platform 调平台

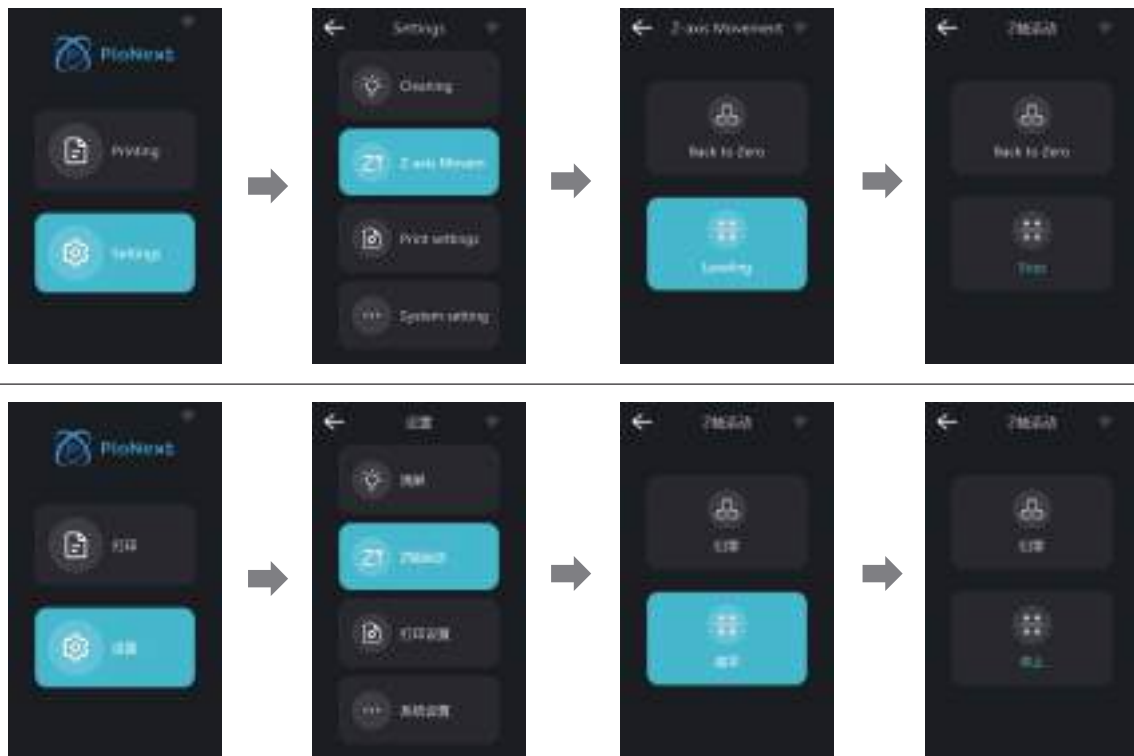
If the platform does not stick to the print screen, do as the following:
如果没有贴紧打印屏, 请进行如下操作:



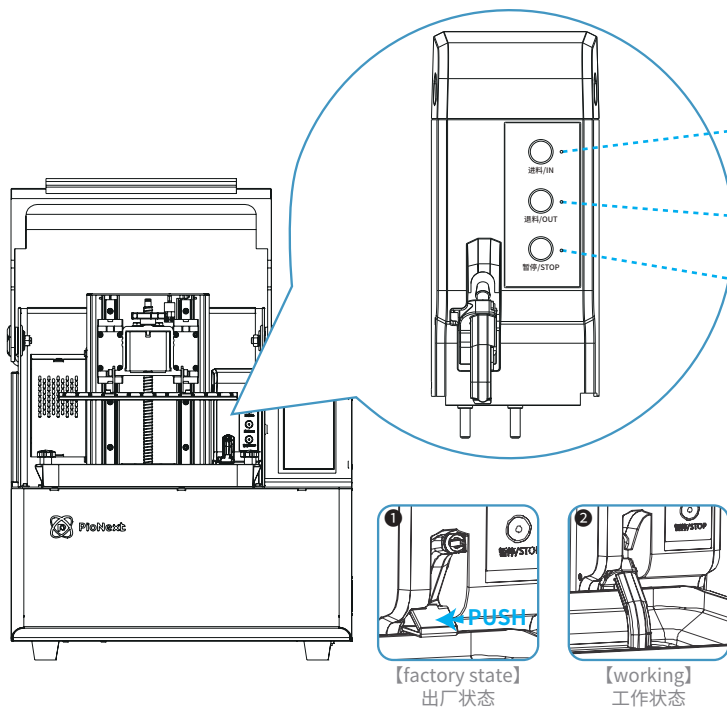
1. 拧松调平螺丝后, 按触摸屏“调平”, 将校准卡片放置在打印平台上, 保持平台与打印屏贴合。 2. 轻轻压平台两端, 顺时针拧紧4个平台螺丝, 即平台调平成功。



3. 按触摸屏“归零”, 控制Z轴上移, 至合适位置, 将校准卡纸取出, 放入料盘, 对准料盘两端螺孔后, 旋紧两端的料盘固定螺丝。



Note: The UI is only for reference only and shall be subject to the actual UI.
注意：界面仅供参考，实际以UI为准。



Interface Definition | 接口定义:

- **【进料/IN】** : click to suck in the resin, and then stop when the resin level rises to the sensing height; click again to stop it;
点击进行树脂吸入，树脂液面升至感应高度停止，再次点击停止；
- **【退料/OUT】** : click to perform resin extraction, and click again to stop.
点击进行树脂抽出，再次点击停止。
- **【暂停/STOP】** : click to stop the module functioning;
点击停止模块功能；

Instructions for the LEDs | 指示灯说明:

1. The LED is always ON to indicate that the functionality is being performed;
指示灯常亮表示正在执行该功能；
2. LED3 is always ON to indicate that the module is not working;
LED 3 指示灯常亮表示模块未工作；
3. When in [Automatic Mode], LED1 is always on when feeding, LED2 is always on when returning, and all three LED lights are flashing when the feeding is full and paused;
处于【自动模式】时，进料时LED1单独常亮，退料时LED2单独常亮，加料满暂停时，三个LED灯均闪烁；



Notice | 注意:

- ① Before opening [Auto Mode], please make sure that the resin bottle and tank levels are normal. ① 开启【自动模式】前请确认树脂瓶和料槽余量是否正常；
- ② If there is no response when clicking [退料/OUT], you must click the button again to stop. ② 若点击【退料/OUT】无感应，须再次点击该按钮停止。

6. Guidance on the use of the feed system/module 供料系统使用指南

【Automatic Mode】: The system defaults to turning off automatic feeding. Select this mode to sense the resin feeding process in real-time during printing, can set the feeding time according to your preference. After printing, it begin to return the material, be available to setting return the material time.

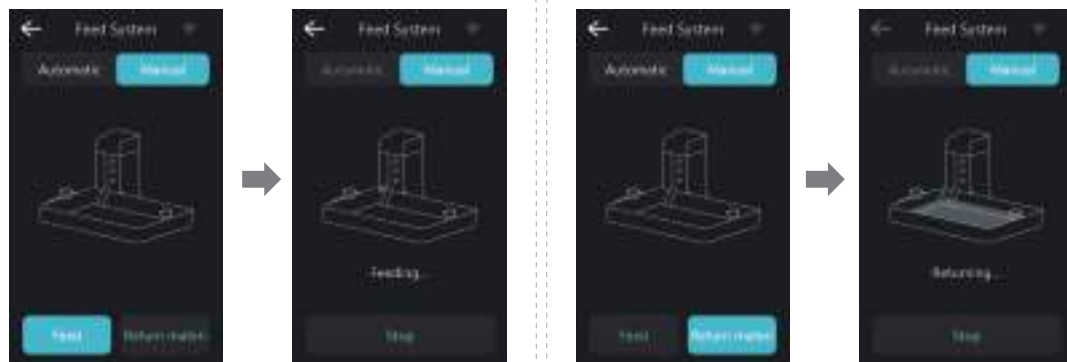
Feed delay can be set 【0-2min】
Return delay can be set 【0-10min】



【Manual Mode】: Select this mode to control the resin liquid level during the printing process, and perform feeding and unloading operations.

Exit the function from the manual mode interface, and the system defaults the automatic feeding function to be off.

Single max feeding time 【8 min】
Single max running time 【15 min】



【Feed】: Click this mode to feed material to realize the same function as 【进料/IN】.

【Return materi】: Click this mode to return material to realize the same function as 【退料/OUT】.

6. Guidance on the use of the feed system/module 供料系统使用指南

【自动模式】：系统默认关闭自动进料，选择该模式可在打印过程中实时感应树脂液面进行进料，可根据偏好习惯设置进料时长；打印完成后开始退料，可设置退料时长。

进料延时可设置时间【0-2】分钟
退料延时可设置时间【0-10】分钟



【手动模式】：选择该模式可在打印过程中自行控制树脂液面，进行进料退料操作。

从手动模式界面退出功能，系统默认自动进料功能关闭。

进料单次最大运行时间【8分钟】
退料单次最大运行时间【15分钟】



【进料】：点击该模式进料可实现与【进料/IN】相同功能。

【退料】：点击该模式退料可实现与【退料/OUT】相同功能。

7.Guidance on the use of Pre-Heat 成型室加热功能使用指南



【Open Auto Pre Heat】： Turn on this function to detect the temperature of the printing area in real time for heating during the printing process. You can customize the temperature according to the printing environment requirements, and then click OK to start the heating device of the forming room.

After reaching the set temperature, the device stops working, the heating device continues if detected the temperature of printing area is lower than the set temperature.



【成型室加热功能】： 开启此功能可实时检测打印区域温度，在打印过程中进行加热。您可以根据打印环境需求自定义温度，然后点击确定，即可启动成型室的加热装置。

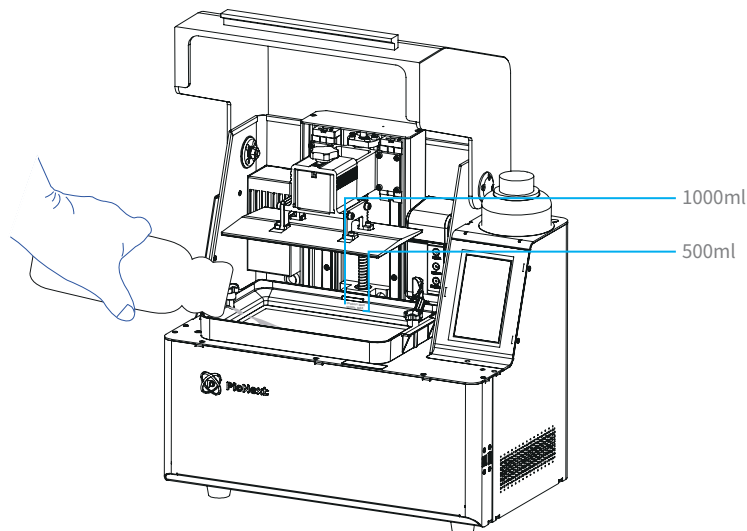
达到设定温度后，装置停止工作，待检测打印区温度低于设定温度时，加热装置继续工作。



Note: The UI is only for reference only and shall be subject to the actual UI.
注意：界面仅供参考，实际以UI为准。

8. Load Resin 装料

Pour the UV photosensitive resin into the resin vat. The slot capacity is 500ml/1000ml.
将3D打印机 UV 光敏树脂倒入料盘, 槽位容量分别:500ml/1000ml。



Tips: How to change resin:

Take out the resin vat slowly, pour out the remaining resin into the container, clean the resin vat, pour in new resin, and then install the resin vat to the machine.

提示: 如何更换耗材?

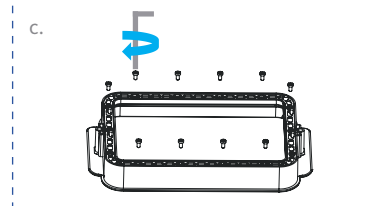
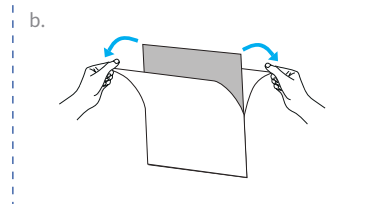
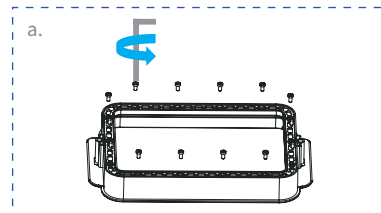
将料盘缓缓取出, 把剩余树脂倒入容器, 清洗干净料盘, 重新倒入新树脂, 再把料盘安装到机器即可。



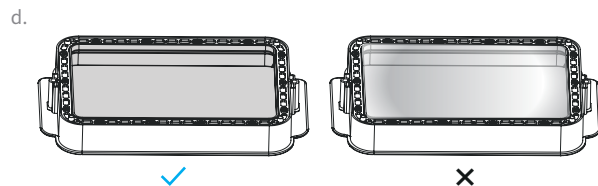
Caution : Resin may cause skin irritation or an allergic skin reaction. Please wear gloves before use to avoid direct contact with the skin.

警示: 请戴上手套方可进行装料, 光敏树脂为刺激性材料, 避免接触到皮肤。

Installation steps 安装步骤



- First, remove the 14 screws at the bottom of the vat and take down the old release film.
首先拆卸料槽底部的14颗螺丝，取出坏的离型膜。
(注意:需清理离型膜固定板和料槽底部)
- Gently remove the protective film on the front and back of the release film.
撕下离型膜正反面保护膜。
- Use the release film fixing plate to press the release film into the bottom of the vat, and tighten the screws diagonally across from each other one at a time. (Note: Make sure there are no debris between the fixing plate and release film)
用离型膜固定板将离型膜压入料槽底部，斜对角依次锁紧料槽底部螺丝
(注意:确保离型膜和固定板间无异物)
- Make sure the release film is flat and tight after installation. (Note: If not flat or loose, please check whether the screws are locked or the release film is abnormal)
确认离型膜安装后保持平整和紧致(注意: 如不平整或松弛, 请检查螺丝是否锁紧或离型膜是否异常)



Parameters 规格参数



尺寸:198mm*286mm
(Size)



厚度:0.15mm
(Thickness)



透光率:95%
(Light Transmittance)

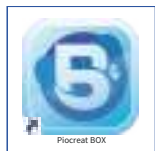
■ Tips: ① The diagram is a reference for the film change procedure, please refer to the physical product; if there are excess edges after installation of the release film, you will need to cut them off.

② It is recommended to replace the release film when it has been used for more than 200 hours.

提示: ① 图示为换膜步骤参考, 请以实物为准; 如离型膜安装后存在多余边缘, 需要将多余边缘切割;

② 离型膜使用超过200小时建议更换。

1. Slice



Piocreat BOX



1. Open the Piocreat BOX slice software, click “Add printer” select printer model and click “Add” then click “open” on the left of the screen to import model file.



2. If the model needs to add support, click the upper left icon ① to set corresponding parameters ②.



3. Click icon ①→Setting slice printing parameters ②→Click

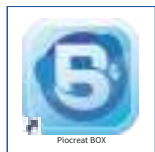


4. Wait for slice to be finished→Select "Local Printing" to save the sliced file.
(You are welcome to find more details of slicing tutorial on the official website www.piocreat3d.com)



Note: The published UI of slicing software shall prevail for the interfaces of Piocreat BOX .

1. 切片



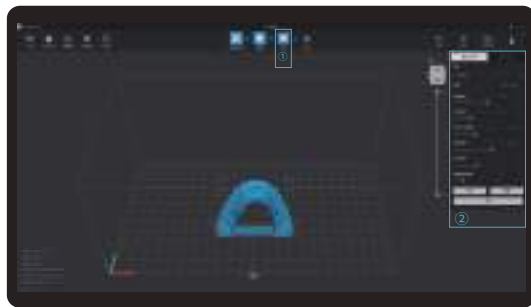
Piocreat BOX



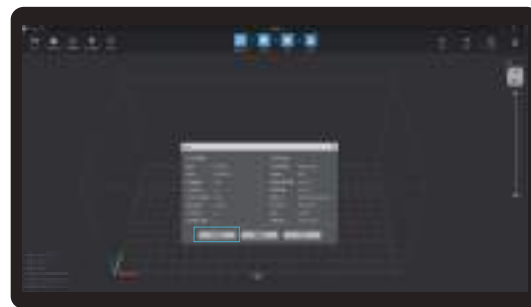
1. 打开Piocreat BOX 切片软件点击新增打印机，选择设备型号并确认，然后在界面的左上方点击“打开”导入模型文件；



2. 根据模型如需添加支架, 点击左上方图标①, 设置相应参数 ②;



3. 点击图标 ① → 设置切片打印参数 ② → 点击切片

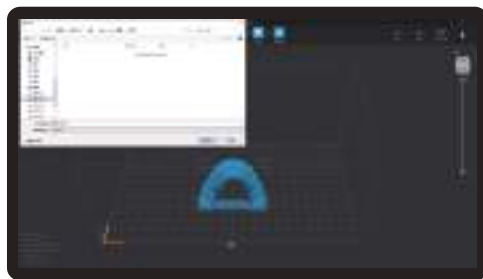


4. 等待完成切片后→选择“本地打印”另存切片完成的文件。
(*切片教程详见官网切片视频www.szc3d.com)

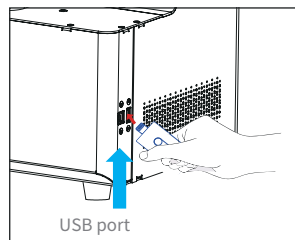


注意:Piocreat BOX 的界面均以发布的切片软件UI为准。

2. Print



1. Generate cxdlpv4 file, and save the file to U disk.

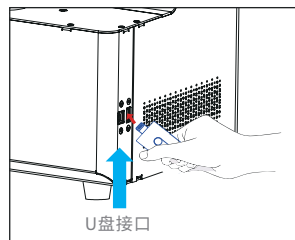


2. Insert the U disk → press the print button.

2. 打印



1. 生成 cxdlpv4 文件→保存文件到U盘



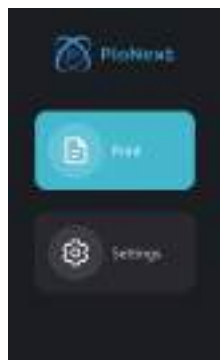
2. 插入U盘→按下打印按钮



Note: The UIinterface is for reference only,and shall be subject to the actual UI.
注意：界面仅供参考，实际以UI为准。



Warning: During the printing process the machine can't be shaken, so as not to avoid influencingaffect the printing quality.
警告：在打印过程中，机器不能摇动，以免影响打印质量。



1. Select USB disk files;

2. Choose to use parameters;

3. Press "Start" button

4. Printing...



1. 选择U盘文件;

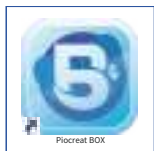
2. 选择打印参数;

3. 按下开始键;

4. 正在打印中...

11. WIFI Print 无线打印

Slice



Piocreat BOX



1. Open the Piocreat BOX slice software, click "Add printer" select printer model and click "Add" then click "open" on the left of the screen to import model file.



2. If the model needs to add support, click the upper left icon to set corresponding parameters.



3. Click icon ①→Setting slice printing parameters②→Click.



4. wait for slice to be finished→Select "Remote Printing" for WiFi printing.

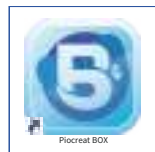


5. Once the transmission is over, select the file on the machine to start printing.



Note: Make sure the Piocreat BOX and the printer are connected to the same WiFi.

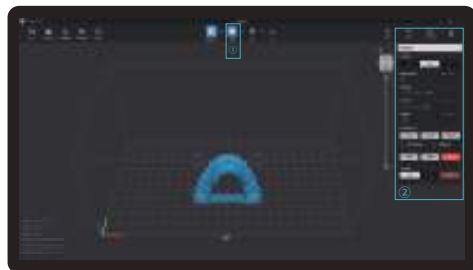
切片



Piocreat BOX



1. 打开Piocreat BOX 切片软件点击新增打印机，选择设备型号并确认，然后在界面的左上方点击“打开”导入模型文件；



2. 根据模型如需添加支撑，点击左上方图标①，设置相应参数②；



3. 点击图标①→设置切片打印参数②→点击切片；



4. 等待完成切片后→选择“远程打印”进入WIFI打印；

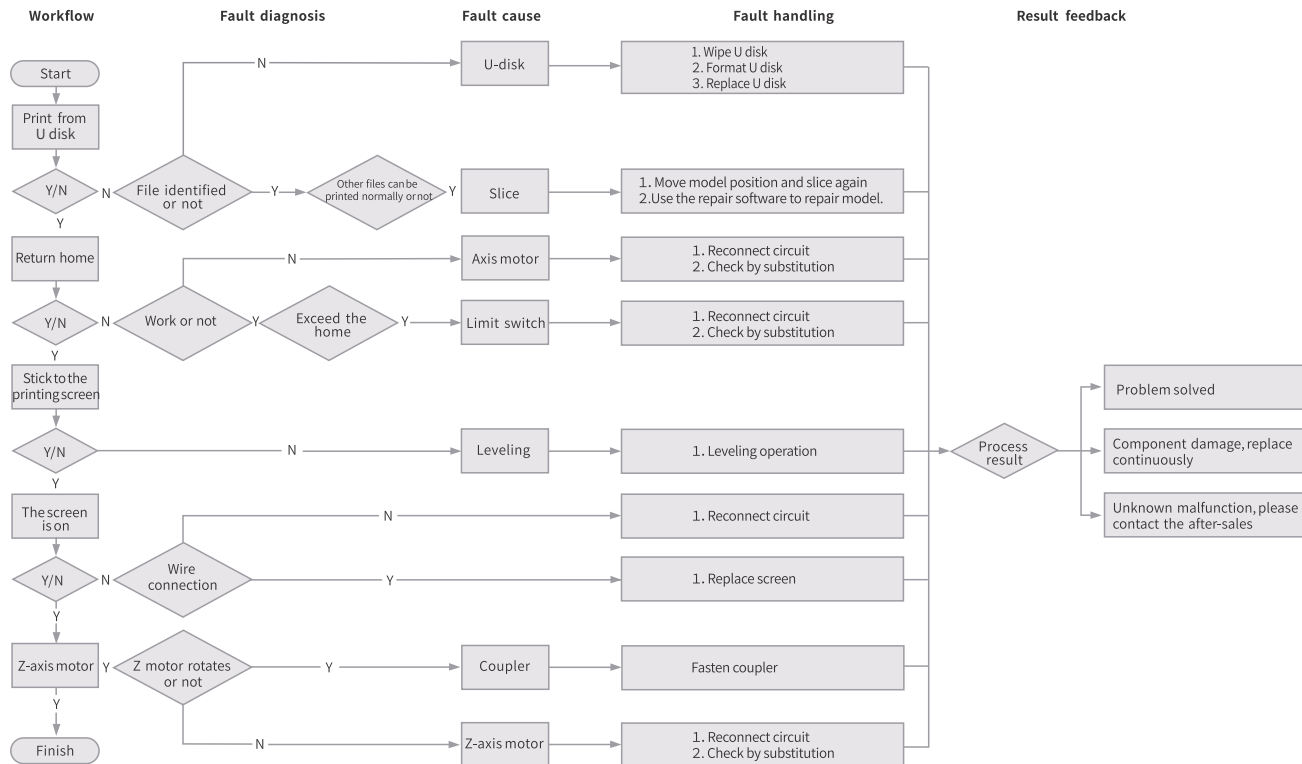


5. 传输完成后在机器上选择该文件启动打印。

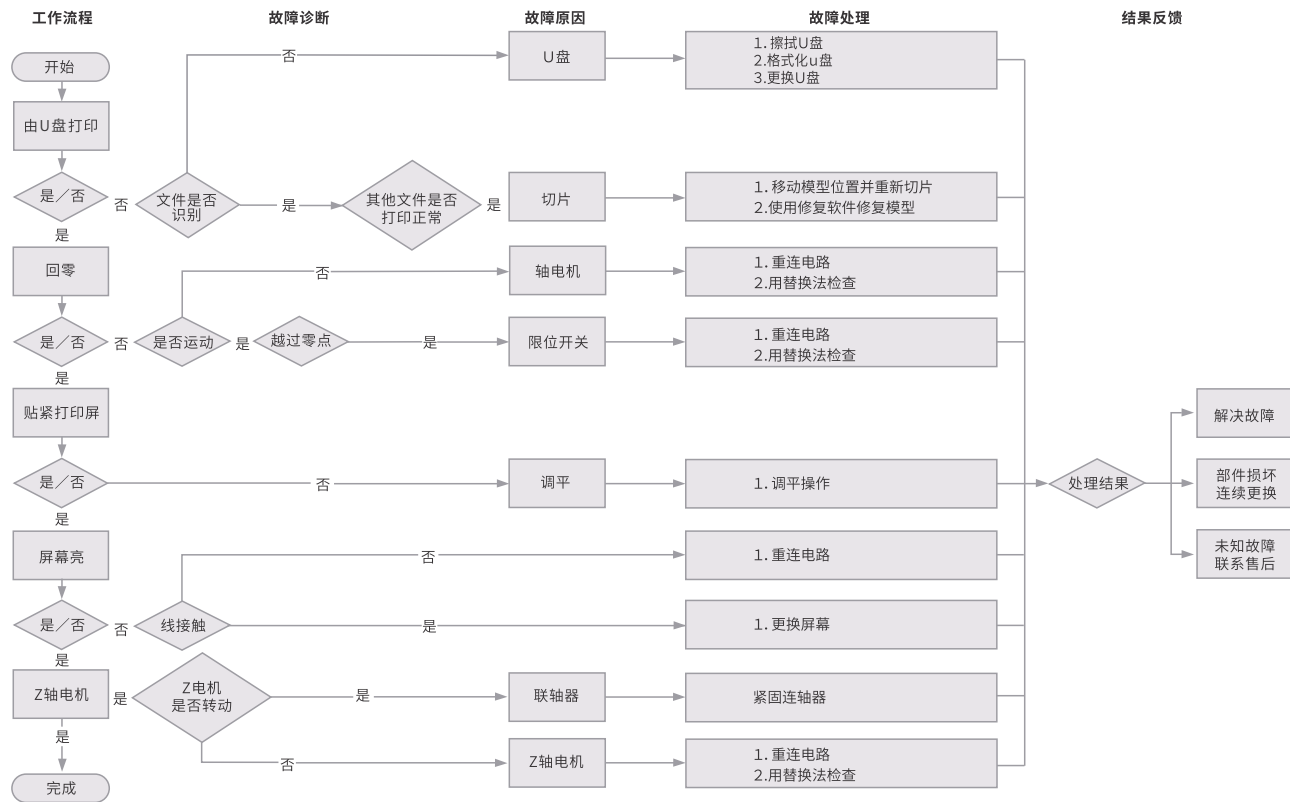


注意：确保Piocreat BOX与打印机连接同一WIFI。





13. 故障检修





Scan the code to know more

Warranty Policy ←

- 1-year Limited Warranty since the date of product purchase.
- No Warranty for the Release Film and Product Gift (U disk, Gloves, Screwdriver, Paper funnel, Brush, etc.)

What Is Covered? ←

Any defects in material, workmanship of product will be covered until you provide any relating documents and information, including but not limited to:

- User of the product are in the country of purchase
- Defective product is a PIOCREAT product
- Proof of Purchase

What Is Not Covered? ←

PIOCREAT does not guarantee the service as a result of:

1. The proof of purchase being altered or made illegible.
2. The product label or serial number on the product being altered or made illegible.
3. Normal wear of accessories or consumables for use as release film.
4. Malfunction or damage caused by personal retrofitting, or improper installation and usage.
5. Malfunction or damage caused by use in non-recommended working environments.
6. Malfunction or damage caused by overuse (overload) or wrong maintenance (damp, mildew, etc.)
7. Malfunction or damage caused by Force Majeure (fire hazard, earthquake, lightning and floods, etc.)
8. Malfunction or damage caused by the use of other brand parts or consumable.

Technical Support ←

Please enjoy our technical support of the whole lifetime (Except technical problem beyond product itself) after purchase the product while product documents as user manual attached in U disk for instruction.

Please provide product Serial Number when apply for technical support.

Kindly Notification ←

Please read the user manual and warranty card carefully before the use. For any service, Please priorly contact local seller or contact us via [Email: after@piocreat 3d.com](mailto:after@piocreat3d.com) for support. See www.piocreat3d.com / for specific warranty information about your product and procedures to act on a warranty claim.

退/换货政策 ←

一、满足退/换货时间

- ① 电商平台购买支持7天无理由退货，即产品签收时间起算，满168小时为7天。
- ② 因机器品质问题，非人为损坏的情况，签收后15天内可申请退换货。
- ③ 如另通过合同购买且有签订退换货时间的以合同为准，运费标准以售后服务卡为准。

二、产品外观要求无损伤、划痕、污迹、裂纹、变形等；随机配件、工具、赠品、包装等要求齐全完好。经我司售后检测判定，如退/换货收到的产品外观损坏，配件不全或因未按照原包装打包邮寄导致的问题，客户需承担相应的费用，具体损耗及费用需寄回后经专业售后人员进行检测核算。

三、非质量问题退/换货，如使用了耗材，客户需承担耗材的费用；由于包装纸盒或打包木架返厂后是无法二次使用的，因此客户需承担包装费；具体损耗及费用需寄回后经专业售后人员进行检测核算。

四、因不喜欢、不想要、拍错、使用不当、不满意产品等原因造成的退换货，退回运费需客户自行承担。

五、换货时，客户需先将机器寄回，公司收到机器后会及时安排发货。

退/换货运费标准 ←

类型	分类	寄回运费	出库运费
换货	非品质问题	客户承担	公司承担
	品质问题	公司承担	公司承担
退货	非品质问题	客户承担	/
	品质问题	公司承担	/

保修政策 ←

一、质保期

- ① 整机保修一年。
- ② 离型膜、赠品（U盘、螺丝刀、手套、油漆刷、纸漏斗、铲刀等）无保质期。收到产品后，请核对说明书部件清单，如赠品有缺少或品质问题，7天内可联系售后申请补发或更换。

二、质保期内保修：经我司售后检测判定为品质问题，公司提供免费维修服务；如果是人为导致的非品质问题，客户需承担相应更换的配件费用，无需承担维修费。

三、质保期外维修：由客户承担维修过程中产生的人工费、配件费、包装费、来回运费等所有费用。



扫码了解更多

返厂维修运费标准 ←

类型	返厂时间	返厂运费	出库运费
非品质问题	三个月以内	客户承担	公司承担
	三个月以上	客户承担	客户承担
品质问题	一个月以内	公司承担	公司承担
	一至三个月	客户承担	公司承担
	三个月以上	客户承担	客户承担

14.售后服务卡

下列情况不列入质保范围 <

- ① 无法提供有效的机器制造编码、购买凭证和保修卡，或信息被涂改、字迹模糊、无法辨认等。
- ② 正常的使用磨损而造成的部件损坏。
- ③ 未按说明书指导，不正确安装、使用及操作，或私自对机器进行改装而造成机器故障或损坏。
- ④ 在非机器规定的工作环境下使用而造成机器故障或损坏。
- ⑤ 由于滥用（超出工作负荷等）或维护不当（受潮、进液、浸泡、发霉等）造成机器故障或损坏。
- ⑥ 由于不可抗因素（如：火灾、地震、雷击、水灾等）造成机器故障或损坏。
- ⑦ 由于使用其他品牌部件或低质量耗材造成的设备故障或损坏。
- ⑧ 未经官方授权的服务点维修过的机器。

技术支持 <

凡购买创想三帝3D打印机，均可享受（除产品本身之外）终生技术支持，如超越产品本身的技术问题恕不提供。本产品在U盘卡中有相关使用资料，如在使用过程中遇到技术问题，请联系售后客服帮您解决。

温馨提示 <

- ① 使用机器前请仔细阅读说明书和售后服务卡。
- ② 质保期内维修过的机器后仍享有剩余质保服务。
- ③ 退/换货及返厂维修需按原包装寄回机器，以免快递过程中产生其他问题，建议妥善保存好产品原包装。
- ④ 申请质保服务时，需提供产品制造编码、购买凭证、订单号、保修卡、发票等信息。如未提供，公司有权拒绝提供质保服务。
- ⑤ 服务时间：周一至周五，9:00-20:30；周六至周日，9:00-18:30（法定节假日除外）。热线：0755-2103-9743，邮箱：after@piocreat3d.com

Notes 笔记

This image shows a single sheet of white paper with horizontal ruling lines. The lines are evenly spaced and run across the width of the page. There are no margins, text, or other markings on the paper.



WARRANTY

Before returning the product and filling in a warranty, please contact after-sale person for going through after-sale formality. And attach this warranty card along with the returned machine.

Repair ☐

Change ☐

Return ☐

Name: _____ Telephone: _____

Address: _____

Serial Number: _____ Order Number: _____

Channel: Platform ☐ Offline ☐

Date of purchase Day _____ Mon. _____ Year _____

Malfunction And Damage Depiction Or Return And Change Reasons\ Suggestions:

Repair Records:



Note: Client need filling in basic infor. and return reasons. Repair records shall retain for technicians.



产品保修卡



产品寄回前请先联系售后专员，为正常进行售后处理，请务必填写此卡，并随机器寄回。

返修 ☐

换货 ☐

退货 ☐

客户名称：_____联系电话：_____

收件地址：_____

机器制造编码：_____订单编号：_____

购买渠道：电商平台 ☐ 线下 ☐

购买日期：_____年_____月_____日

故障描述或退、换货原因和建议：

维修情况记录：



温馨提示：基本信息及返厂原因为客户必填项，维修情况记录部分为维修人员填写项。



Due to the differences between different machine models, the physical objects and the final images can differ. The final explanation rights shall be reserved by **Shenzhen Piocreat 3D Technology Co., Ltd.**

因每款机型不同，实物与图可能有所差异，请以实物为准，最终解释归深圳市创想三帝科技有限公司所有。



Scan To Learn More
扫码了解更多

Shenzhen Piocreat 3D Technology Co., Ltd.

Add: Room 1308, Building No. 3, Jincheng Industrial Area, Tongsheng Community, Dalang Street,
Longhua District, Shenzhen, China, 518109

Tel: +86 0755-2103 9743

Official Website: www.piocreat3d.com

E-mail: after@piocreat3d.com hello@piocreat3d.com

深圳市龙华区大浪街道同胜社区金城工业园第三栋1308

服务热线 0755-2103 9743

公司网站 www.szc3d.com



This device complies with part 15 of the FCC Rules. Operation is subject to the following two conditions: (1) This device may not cause harmful interference, and (2) this device must accept any interference received, including interference that may cause undesired operation.

Any Changes or modifications not expressly approved by the party responsible for compliance could void the user's authority to operate the equipment.

Note: This equipment has been tested and found to comply with the limits for a Class B digital device, pursuant to part 15 of the FCC Rules. These limits are designed to provide reasonable protection against harmful interference in a residential installation. This equipment generates uses and can radiate radio frequency energy and, if not installed and used in accordance with the instructions, may cause harmful interference to radio communications. However, there is no guarantee that interference will not occur in a particular installation. If this equipment does cause harmful interference to radio or television reception, which can be determined by turning the equipment off and on, the user is encouraged to try to correct the interference by one or more of the following measures:

- Reorient or relocate the receiving antenna.
- Increase the separation between the equipment and receiver.
- Connect the equipment into an outlet on a circuit different from that to which the receiver is connected.
- Consult the dealer or an experienced radio/TV technician for help.

This equipment complies with FCC radiation exposure limits set forth for an uncontrolled environment. This equipment should be installed and operated with minimum distance 20cm between the radiator & your body.