



Shenzhen Huaxia Testing Technology Co., Ltd

1F., Block A of Tongsheng Technology Building, Huahui Road, Dalang Street, Longhua District, Shenzhen, China

Telephone: +86-755-26648640

Fax: +86-755-26648637

Website: www.cqa-cert.com

Report Template Version: V03

Report Template Revision Date: Mar.1st, 2017

Test Report

Report No. : CQASZ20210901617E-01
Applicant: AETHER EYEWEAR PTE. LTD.
Address of Applicant: 160 Robinson Road #14-04 Singapore Business Federation Centre (068914)
Equipment Under Test (EUT):
Product: AETHER AUDIO EYEWEAR(Charging warehouse)
Model No.: T-HT1
Brand Name: Aether
FCC ID: 2A2D8-THT1
Standards: 47 CFR Part 15, Subpart C
Date of Receipt: 2021-05-31
Date of Test: 2021-05-31 to 2021-09-24
Date of Issue: 2021-9-26
Test Result : PASS*

Tested By:

Lewis Zhou

(Lewis Zhou)

Reviewed By:

Timo Lei

(Timo Lei)

Approved By:

Jack Ai

(Jack Ai)



* In the configuration tested, the EUT complied with the standards specified above.

The test report is effective only with both signature and specialized stamp, The result(s) shown in this report refer only to the sample(s) tested. Without written approval of CQA, this report can't be reproduced except in full.

1 Version

Revision History Of Report

Report No.	Version	Description	Issue Date
CQASZ20210901617E-01	Rev.01	Initial report	2021-9-26

2 Contents

	Page
1 VERSION.....	2
2 CONTENTS.....	3
3 TEST SUMMARY.....	4
4 GENERAL INFORMATION.....	5
4.1 CLIENT INFORMATION.....	5
4.2 GENERAL DESCRIPTION OF E.U.T.....	5
4.3 TEST ENVIRONMENT.....	6
4.4 DESCRIPTION OF SUPPORT UNITS.....	6
4.5 STATEMENT OF THE MEASUREMENT UNCERTAINTY.....	7
4.6 TEST LOCATION.....	8
4.7 TEST FACILITY.....	8
4.8 EQUIPMENT LIST.....	9
5 TEST RESULT AND MEASUREMENT DATA.....	10
5.1 ANTENNA REQUIREMENT.....	10
5.2 ELECTRIC FIELD STRENGTH OF FUNDAMENTAL AND OUTSIDE THE ALLOCATED BANDS.....	11
5.3 RADIATED EMISSIONS.....	13
5.4 FREQUENCY TOLERANCE.....	17
5.5 OCCUPIED BANDWIDTH.....	19
5.6 CONDUCTED EMISSION.....	20
6 PHOTOGRAPHS - EUT TEST SETUP.....	25
6.1 RADIATED EMISSION.....	25
7 PHOTOGRAPHS - EUT CONSTRUCTIONAL DETAILS.....	26

3 Test Summary

Test Item	Test Requirement	Test Method	Result
Antenna Requirement	47 CFR Part 15, Subpart C Section 15.203	ANSI C63.10 2013	Pass
Conducted Emission (150KHz to 30MHz)	47 CFR Part 15, Subpart C Section 15.207	ANSI C63.10 2013 Section 6.2	Pass
Electric Field Strength of Fundamental and Outside the Allocated bands	47 CFR Part 15, Subpart C Section 15.225(a)/(b)/(c)	ANSI C63.10 2013 Section 6.10	Pass
Radiated Emission	47 CFR Part 15, Subpart C Section 15.225(d)/15.209	ANSI C63.10 2013 Section 6.4 & 6.5	Pass
Frequency Tolerance	47 CFR Part 15, Subpart C Section 15.225(e)	ANSI C63.10 2013 Section 6.8	Pass
Occupied Bandwidth	47 CFR Part 15, Subpart C Section 15.215	ANSI C63.10 2013 Section 6.9	Pass

4 General Information

4.1 Client Information

Applicant:	AETHER EYEWEAR PTE. LTD.
Address of Applicant:	160 Robinson Road #14-04 Singapore Business Federation Centre (068914)
Manufacturer:	AETHER TECHNOLOGIES LTD
Address of Manufacturer:	Unit 301 Central Construction Bld, 18 Yanshan Road, Nanshan District, Shenzhen, Guangdong Province PR China
Factory:	AETHER TECHNOLOGIES LTD
Address of Factory:	Unit 301 Central Construction Bld, 18 Yanshan Road, Nanshan District, Shenzhen, Guangdong Province PR China

4.2 General Description of E.U.T.

Product Name:	AETHER AUDIO EYEWEAR(Charging warehouse)
Model No.:	T-HT1
Trade Mark:	Aether
Hardware Version:	v12
Software Version:	WATA_Tx_ES7P003_V21_21070801
Serial number:	886144A2557
Operation Frequency:	13.56MHz
Modulation Type:	ASK
Product Type:	<input type="checkbox"/> Mobile <input checked="" type="checkbox"/> Portable <input type="checkbox"/> Fix Location
Antenna Type:	Integral antenna
Antenna Gain:	0dBi
Power Supply:	DC 5V, 2A

4.3 Test Environment

Temperature:	25.3 °C
Humidity:	55 % RH
Atmospheric Pressure:	1009mbar
Test mode:	Transmitting mode

4.4 Description of Support Units

The EUT has been tested with associated equipment below.

Description	Manufacturer	Model No.	Remark	FCC certification
Adapter	Huawei	HW0502000	/	/

4.5 Statement of the measurement uncertainty

The data and results referenced in this document are true and accurate.

The reader is cautioned that there may be errors within the calibration limits of the equipment and facilities.

The measurement uncertainty was calculated for all measurements listed in this test report acc. to CISPR 16 - 4 „Specification for radio disturbance and immunity measuring apparatus and methods – Part 4: Uncertainty in EMC Measurements“ and is documented in the **Shenzhen Huaxia Testing Technology Co., Ltd.** quality system acc. to DIN EN ISO/IEC 17025.

Furthermore, component and process variability of devices similar to that tested may result in additional deviation. The manufacturer has the sole responsibility of continued compliance of the device.

Hereafter the best measurement capability for CQA laboratory is reported:

No.	Item	Uncertainty	Notes
1	Radiated Emission (Below 1GHz)	±5.12dB	(1)
2	Radiated Emission (Above 1GHz)	±4.60dB	(1)
3	Conducted Disturbance (0.15~30MHz)	±3.34dB	(1)
4	Radio Frequency	3×10^{-8}	(1)
5	Duty cycle	0.6 %.	(1)
6	Occupied Bandwidth	1.1%	(1)
7	RF conducted power	0.86dB	(1)
8	RF power density	0.74	(1)
9	Conducted Spurious emissions	0.86dB	(1)
10	Temperature test	0.8℃	(1)
11	Humidity test	2.0%	(1)
12	Supply voltages	0.5 %.	(1)
13	time	0.6 %.	(1)
14	Frequency Error	5.5 Hz	(1)

(1) This uncertainty represents an expanded uncertainty expressed at approximately the 95% confidence level using a coverage factor of k=2.

4.6 Test Location

Shenzhen Huaxia Testing Technology Co., Ltd.

1F., Block A of Tongsheng Technology Building, Huahui Road, Dalang Street, Longhua District, Shenzhen, China

4.7 Test Facility

- **A2LA (Certificate No. 4742.01)**

Shenzhen Huaxia Testing Technology Co., Ltd., Shenzhen EMC Laboratory is accredited by the American Association for Laboratory Accreditation(A2LA). Certificate No. 4742.01.

- **FCC Registration No.: 522263**

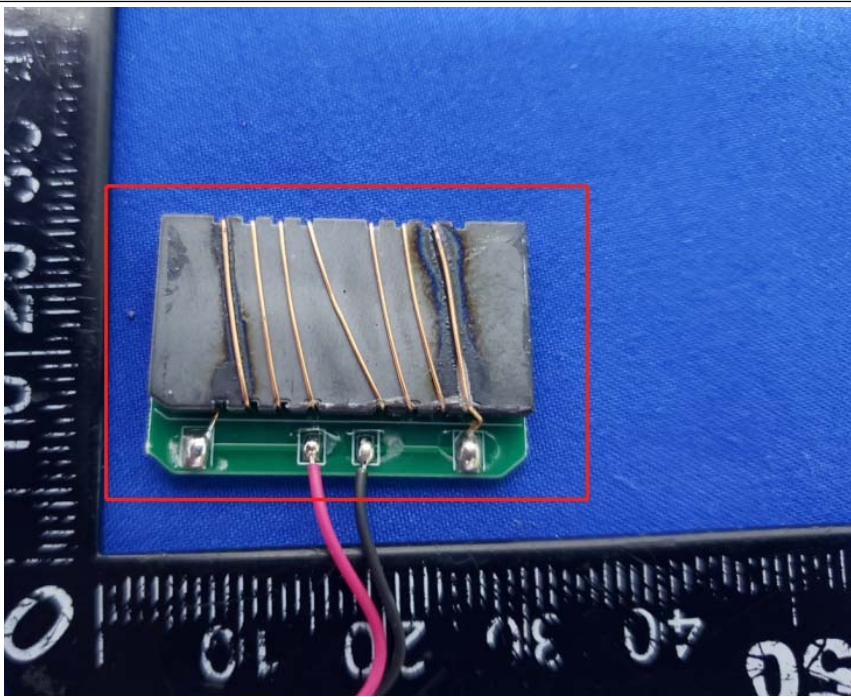
Shenzhen Huaxia Testing Technology Co., Ltd., Shenzhen EMC Laboratory has been registered and fully described in a report filed with the (FCC) Federal Communications Commission. The acceptance letter from the FCC is maintained in our files. Registration No.:522263

4.8 Equipment List

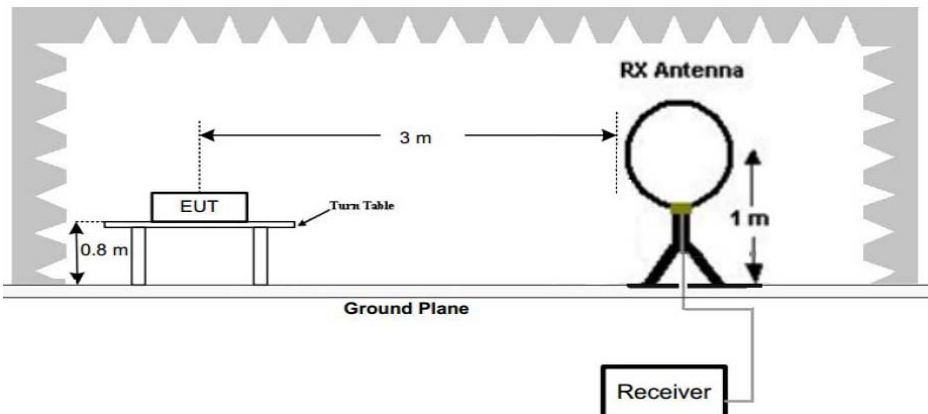
Test Equipment	Manufacturer	Model No.	Instrument No.	Calibration Date	Calibration Due Date
EMI Test Receiver	R&S	ESR7	CQA-005	2020/9/26	2021/9/25
Spectrum analyzer	R&S	FSU26	CQA-038	2020/10/28	2021/10/27
Preamplifier	MITEQ	AFS4-00010300-18-10P-4	CQA-035	2020/9/26	2021/9/25
Preamplifier	MITEQ	AMF-6D-02001800-29-20P	CQA-036	2020/11/2	2021/11/1
Loop antenna	Schwarzbeck	FMZB1516	CQA-087	2020/10/28	2021/10/27
Bilog Antenna	R&S	HL562	CQA-011	2020/9/26	2021/9/25
Coaxial Cable (Below 1GHz)	CQA	N/A	C020	2020/9/26	2021/9/25
EMI Test Receiver	R&S	ESPI3	CQA-013	2020/9/26	2021/9/25
LISN	R&S	ENV216	CQA-003	2020/11/5	2021/11/4
Coaxial cable	CQA	N/A	CQA-C009	2020/9/26	2021/9/25
high-low temperature chamber	Auchno	OJN-9606	CQA-CB2	2020/9/26	2021/9/25
DC power	KEYSIGHT	E3631A	CQA-028	2020/9/26	2021/9/25

5 Test Result and Measurement Data

5.1 Antenna Requirement

Standard requirement:	47 CFR Part15 C Section 15.203
15.203 requirement:	An intentional radiator shall be designed to ensure that no antenna other than that furnished by the responsible party shall be used with the device. The use of a permanently attached antenna or of an antenna that uses a unique coupling to the intentional radiator, the manufacturer may design the unit so that a broken antenna can be replaced by the user, but the use of a standard antenna jack or electrical connector is prohibited.
EUT Antenna:	 <p>The antenna is Integral antenna. The best case gain of the antenna is 0dBi.</p>

5.2 Electric Field Strength of Fundamental and Outside the Allocated bands

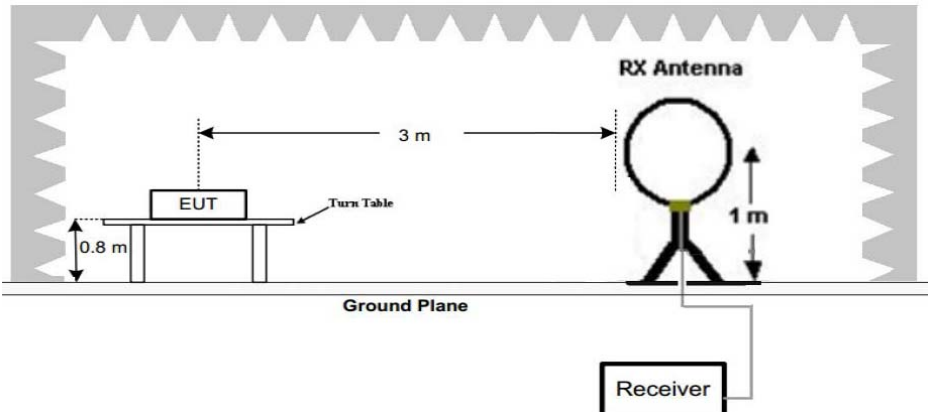
Test Requirement:	47 CFR Part 15, Subpart C Section 15.225(a)/(b)/(c)				
Test Method:	ANSI C63.10: 2013				
Test Site:	3m (Semi-Anechoic Chamber)				
Receiver Setup:	Frequency	Detector	RBW	VBW	Remark
	0.009MHz-0.090MHz	Peak	10kHz	30kHz	Peak
	0.009MHz-0.090MHz	Average	10kHz	30kHz	Average
	0.090MHz-0.110MHz	Quasi-peak	10kHz	30kHz	Quasi-peak
	0.110MHz-0.490MHz	Peak	10kHz	30kHz	Peak
	0.110MHz-0.490MHz	Average	10kHz	30kHz	Average
	0.490MHz -30MHz	Quasi-peak	10kHz	30kHz	Quasi-peak
Limit:	Frequency Range(MHz)	E-field Strength Limit @ 30 m (μV/m)		E-field Strength Limit @ 3 m (dBμV/m)	
	13.560 ± 0.007	15848		124	
	13.410 to 13.553 13.567 to 13.710	334		90	
	13.110 to 13.410 13.710 to 14.010	106		8	
	Note: Where the limits have been defined at one distance, and a signal level measured at another, the limits have been extrapolated using the following formula: Extrapolation(dB)=40log ₁₀ (Measurement Distance/Specification Distance)				
Test Setup:	 <p>Figure 1. Below 30MHz</p>				
Test Procedure:	<ol style="list-style-type: none">1. The EUT was placed on the top of a rotating table 0.8 meters above the ground at a 3 meter semi-anechoic camber. The table was rotated 360 degrees to determine the position of the highest radiation.2. The EUT was set 3 meters away from the interference-receiving antenna, which was mounted on the top of a variable-height antenna tower.3. The antenna height is varied from one meter to four meters above the				

	<p>ground to determine the maximum value of the field strength. Both horizontal and vertical polarizations of the antenna are set to make the measurement.</p> <p>4. For each suspected emission, the EUT was arranged to its worst case and then the antenna was tuned to heights from 1 meter to 4 meters (for the test frequency of below 30MHz, the antenna was tuned to heights 1 meter) and the rotatable table was turned from 0 degrees to 360 degrees to find the maximum reading.</p> <p>5. The test-receiver system was set to Peak Detect Function and Specified Bandwidth with Maximum Hold Mode.</p> <p>6. If the emission level of the EUT in peak mode was 10dB lower than the limit specified, then testing could be stopped and the peak values of the EUT would be reported. Otherwise the emissions that did not have 10dB margin would be re-tested one by one using peak, quasi-peak or average method as specified and then reported in a data sheet.</p> <p>7. The radiation measurements are performed in X, Y, Z axis positioning. And found the X axis positioning which it is worse case, only the test worst case mode is recorded in the report.</p>
Test Mode:	Transmitting mode
Test Result:	Pass

Measurement Data

Fundamental frequency(MHz)	Detector	Result (dB μ V/m)	Limit (dB μ V/m)
		at 3 meter	at 3 meter
13.110-13.410	Peak	38.69	80.5
13.410-13.553	Peak	42.35	90.5
13.553-13.567	Peak	81.52	124.0
13.567-13.710	Peak	43.27	90.5
13.710-14.010	Peak	38.52	80.5

5.3 Radiated Emissions

Test Requirement:	47 CFR Part 15C Section 15.209 and 15.225(d)				
Test Method:	ANSI C63.10: 2013				
Test Site:	3m (Semi-Anechoic Chamber)				
Receiver Setup:	Frequency	Detector	RBW	VBW	Remark
	0.009MHz-0.090MHz	Peak	10kHz	30kHz	Peak
	0.009MHz-0.090MHz	Average	10kHz	30kHz	Average
	0.090MHz-0.110MHz	Quasi-peak	10kHz	30kHz	Quasi-peak
	0.110MHz-0.490MHz	Peak	10kHz	30kHz	Peak
	0.110MHz-0.490MHz	Average	10kHz	30kHz	Average
	0.490MHz -30MHz	Quasi-peak	10kHz	30kHz	Quasi-peak
	30MHz-1GHz	Peak	100 kHz	300kHz	Peak
Limit:	Frequency	Field strength (microvolt/meter)	Limit (dBuV/m) @ 3 m	Remark	
	0.009MHz-0.490MHz	2400/F(kHz) @300m	129-94	Quasi-peak	
	0.490MHz-1.705MHz	24000/F(kHz) @30m	74-63	Quasi-peak	
	1.705MHz-30MHz	30 @30m	70	Quasi-peak	
	30MHz-88MHz	100 @3m	40.0	Quasi-peak	
	88MHz-216MHz	150 @3m	43.5	Quasi-peak	
	216MHz-960MHz	200 @3m	46.0	Quasi-peak	
	960MHz-1GHz	500 @3m	54.0	Quasi-peak	
Note: Where the limits have been defined at one distance, and a signal level measured at another, the limits have been extrapolated using the following formula: Extrapolation(dB)=40log ₁₀ (Measurement Distance/Specification Distance)					
Test Setup:	<div></div> <p>Figure 1. Below 30MHz</p>				

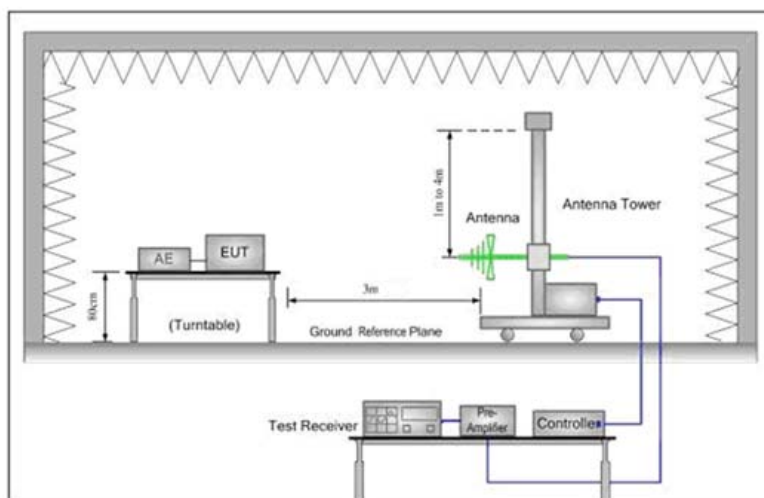


Figure 2. 30MHz to 1GHz

Test Procedure:

5. The EUT was placed on the top of a rotating table 0.8 meters above the ground at a 3 meter semi-anechoic chamber. The table was rotated 360 degrees to determine the position of the highest radiation.
6. The EUT was set 3 meters away from the interference-receiving antenna, which was mounted on the top of a variable-height antenna tower.
7. The antenna height is varied from one meter to four meters above the ground to determine the maximum value of the field strength. Both horizontal and vertical polarizations of the antenna are set to make the measurement.
8. For each suspected emission, the EUT was arranged to its worst case and then the antenna was tuned to heights from 1 meter to 4 meters (for the test frequency of below 30MHz, the antenna was tuned to heights 1 meter) and the rotatable table was turned from 0 degrees to 360 degrees to find the maximum reading.
5. The test-receiver system was set to Peak Detect Function and Specified Bandwidth with Maximum Hold Mode.
6. If the emission level of the EUT in peak mode was 10dB lower than the limit specified, then testing could be stopped and the peak values of the EUT would be reported. Otherwise the emissions that did not have 10dB margin would be re-tested one by one using peak, quasi-peak or average method as specified and then reported in a data sheet.
7. The radiation measurements are performed in X, Y, Z axis positioning. And found the X axis positioning which it is worse case, only the test worst case mode is recorded in the report.

Test Mode:

Transmitting mode

Test Voltage

DC 5V by adapter input 120V/60Hz

Test Result:

Pass

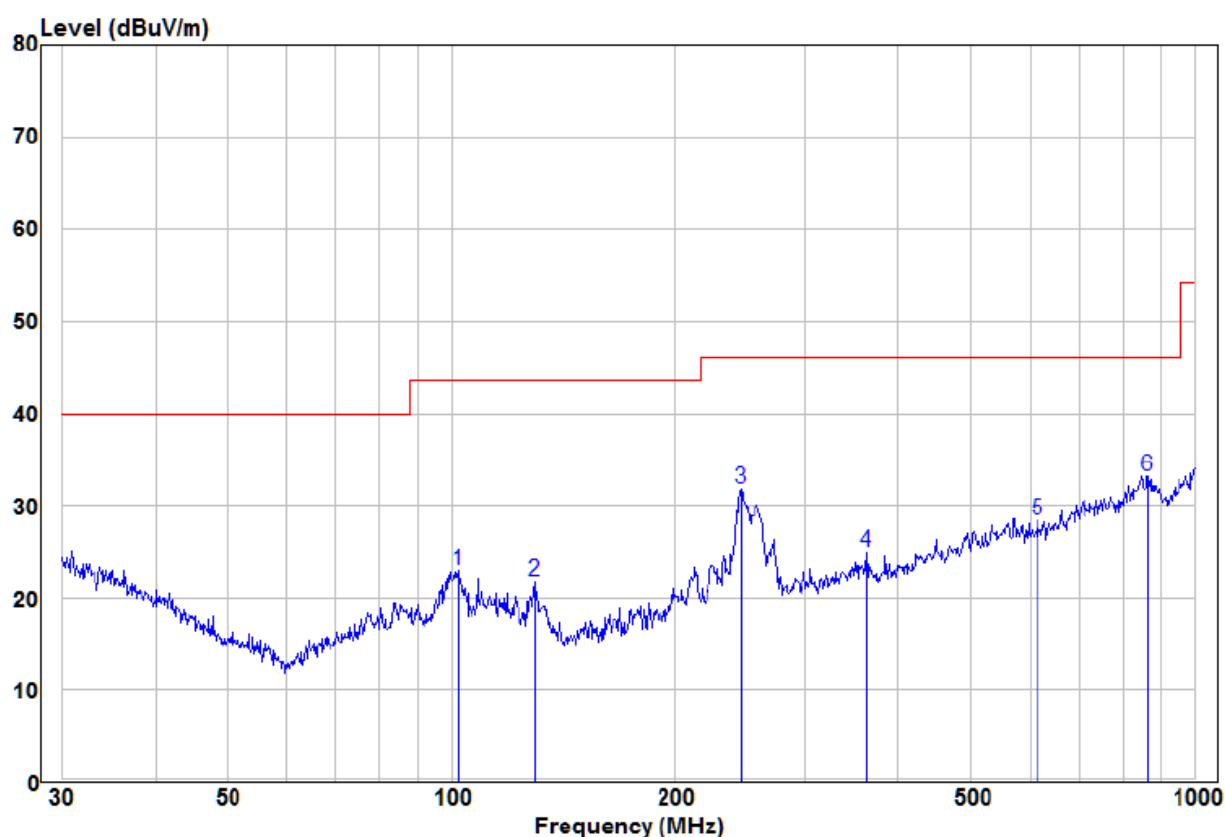
Measurement Data

9kHz - 30MHz:

Emission detect are more than 20dB below the limit line.

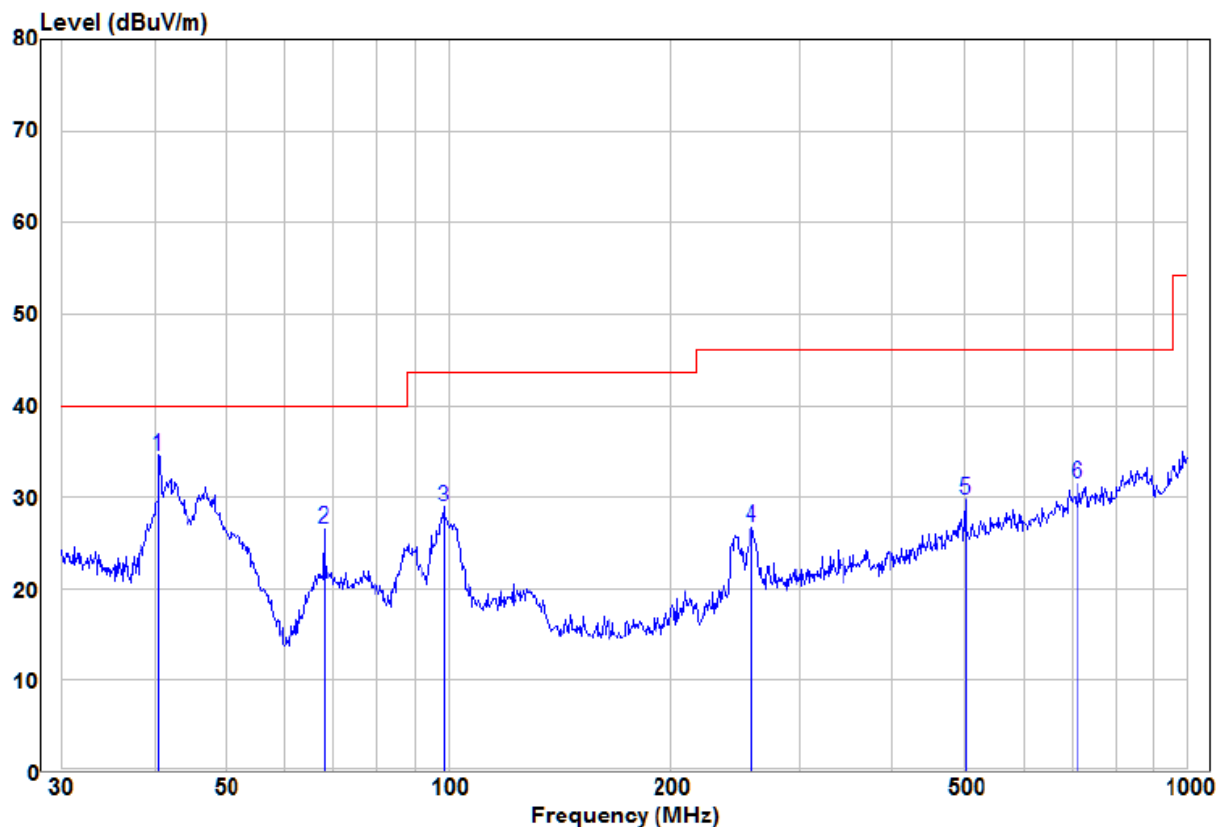
30MHz-1GHz

Horizontal



	Freq	Read		Limit	Over		
	MHz	Level	Factor	Line	Limit	Remark	Pol/Phase
		dBuV	dB/m	dBuV/m	dBuV/m	dB	
1	102.00	12.30	10.55	22.85	43.50	-20.65	Peak
2	129.47	11.27	10.34	21.61	43.50	-21.89	Peak
3	245.09	19.75	11.93	31.68	46.00	-14.32	Peak
4	361.71	9.64	15.23	24.87	46.00	-21.13	Peak
5	614.21	9.31	19.05	28.36	46.00	-17.64	Peak
6 pp	866.09	9.20	23.98	33.18	46.00	-12.82	Peak

Vertical



		Read			Limit	Over		
	Freq	Level	Factor	Level	Line	Limit	Remark	Pol/Phase
	MHz	dBuV	dB/m	dBuV/m	dBuV/m	dB		
1	pp	40.56	22.00	12.54	34.54	40.00	-5.46	Peak
2		67.68	19.02	7.43	26.45	40.00	-13.55	Peak
3		98.49	18.32	10.56	28.88	43.50	-14.62	Peak
4		257.42	14.32	12.32	26.64	46.00	-19.36	Peak
5		501.18	11.46	18.29	29.75	46.00	-16.25	Peak
6		714.17	10.15	21.19	31.34	46.00	-14.66	Peak

Remark:

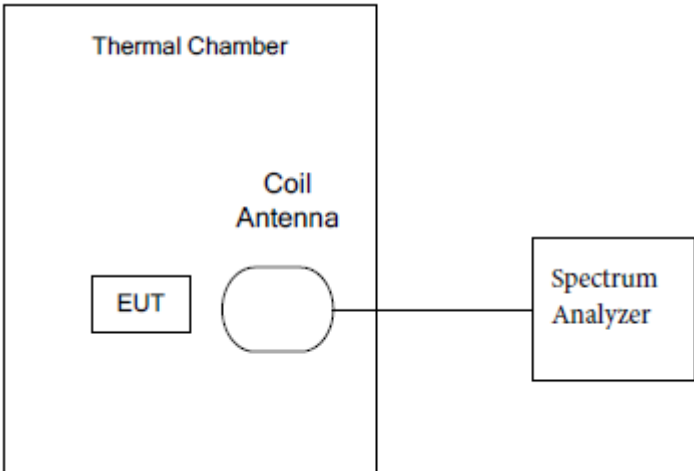
The field strength is calculated by adding the Antenna Factor, Cable Factor & Preamplifier. The basic equation with a sample calculation is as follows:

Factor= Antenna Factor + Cable Factor – Preamplifier Factor,

Level = Read Level + Factor,

Over Limit=Level-Limit Line.

5.4 Frequency Tolerance

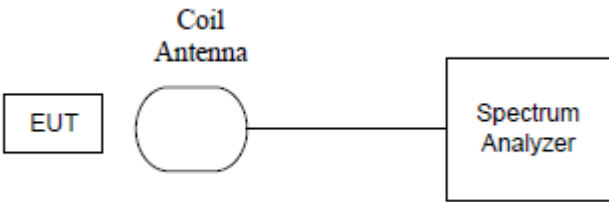
Test Requirement:	47 CFR Part 15 C Section 15.225(e)
Test Method:	ANSI C63.10: 2013
Test Setup:	 <p>The diagram shows a Thermal Chamber containing an EUT (Equipment Under Test) and a Coil Antenna. The Coil Antenna is connected to a Spectrum Analyzer.</p>
Frequency Range:	Operation within the band 13.110-14.010 MHz
Requirements:	The frequency tolerance of the carrier signal shall be maintained within $\pm 0.01\%$ of the operating frequency over a temperature variation of -20 degrees to $+50$ degrees C at normal supply voltage, and for a variation in the primary supply voltage from 85% to 115% of the rated supply voltage at a temperature of 20 degrees C. For battery operated equipment, the equipment tests shall be performed using a new battery.
Method of Measurement:	The EUT was placed in an environmental test chamber and powered such that control element received normal voltage and the transmitter provided maximum RF output.
Test Result:	The unit does meet the FCC Part 15 C Section 15.225(e) requirements.

Test Frequency: 13.56MHz			Temperature:20℃	
Supply Voltage (V) DC	Test Result (MHz)	Deviation (kHz)	Limit ±0.01% (kHz)	Result
5	13.5612931	1.293	1.3560	Pass
4.25	13.5612931	1.293	1.3560	Pass
5.75	13.5612931	1.293	1.3560	Pass

Test Frequency: 13.56MHz			Normal Voltage:DC5V	
Temperature (℃)	Test Result (MHz)	Deviation (kHz)	Limit ±0.01% (kHz)	Result
-20	13.5612832	1.2832	1.3560	Pass
-10	13.5612825	1.2825	1.3560	
0	13.5612874	1.2874	1.3560	
10	13.5612828	1.2828	1.3560	
20	13.5612836	1.2836	1.3560	
30	13.5612887	1.2887	1.3560	
40	13.5612835	1.2835	1.3560	
50	13.5612842	1.2842	1.3560	

Note: Deviation (KHz) = (Test Result-13.56MHz)*1000

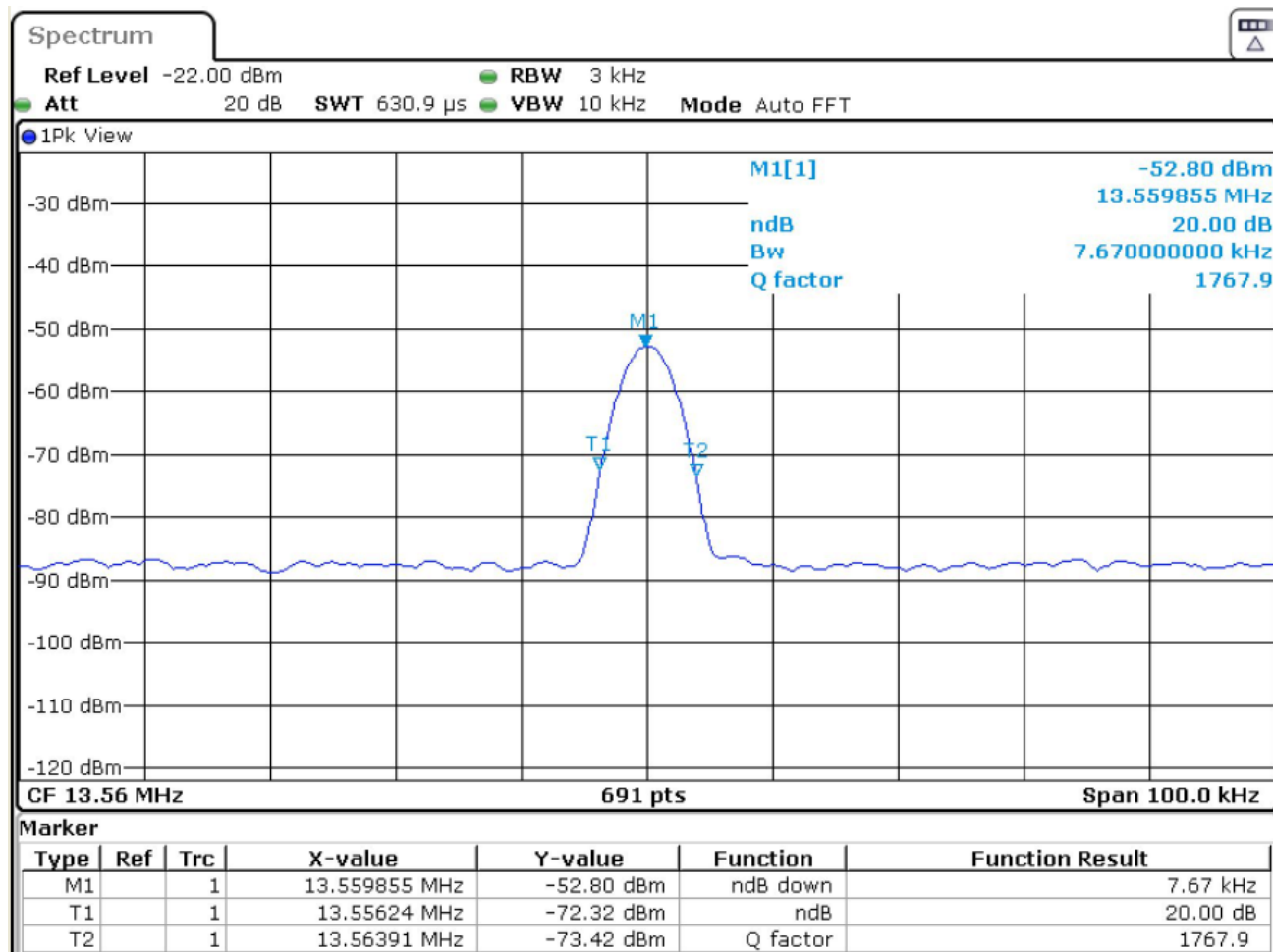
5.5 Occupied Bandwidth

Test Requirement:	47 CFR Part 15 C Section 15.215 (C)
Test Method:	ANSI C63.10: 2013
Test Setup:	
Frequency Range:	Operation within the band 13.110 – 14.010 MHz
Requirements:	Intentional radiators operating under the alternative provisions to the general emission limits, as contained in §15.217 through §15.257 and in subpart E of this part, must be designed to ensure that the 20 dB bandwidth of the emission is contained within the frequency band designated in the rule section under which the equipment is operated. The requirement to contain the 20 dB bandwidth of the emission within the specified frequency band includes the effects from frequency sweeping, frequency hopping and other modulation techniques that may be employed as well as the frequency stability of the transmitter over expected variations in temperature and supply voltage. If frequency stability is not specified in the regulations, it is recommended that the fundamental emission be kept within at least the central 80% of the permitted band in order to minimize the possibility of out-of-band operation.
Limit:	For 13.56 MHz the permitted frequency band is 14kHz, so the limit is 11.2 kHz.

Test Data:

20dB bandwidth (kHz)	FL (MHz)	FH (MHz)	Limit(MHz)	Result
7.67	13.556	13.564	13.110 – 14.010	Pass

Test plot as follows:



Conducted Emission

Test Requirement: 47 CFR Part 15B
Test Method: ANSI C63.4
Test frequency range: 150kHz to 30MHz
Limit:

Frequency range (MHz)	Limit (dB μ V)	
	Quasi-peak	Average
0.15-0.5	66 to 56*	56 to 46*
0.5-5	56	46
5-30	60	50

* Decreases with the logarithm of the frequency.

Test Procedure:

- 1) The mains terminal disturbance voltage test was conducted in a shielded room.
- 2) The EUT was connected to AC power source through a LISN 1 (Line Impedance Stabilization Network) which provides a 50 Ω /50 μ H + 5 Ω linear impedance. The power cables of all other units of the EUT were connected to a second LISN 2, which was bonded to the ground reference plane in the same way as the LISN 1 for the unit being measured. A multiple socket outlet strip was used to connect multiple power cables to a single LISN provided the rating of the LISN was not exceeded.
- 3) The tabletop EUT was placed upon a non-metallic table 0.8m above the ground reference plane. And for floor-standing arrangement, the EUT was placed on the horizontal ground reference plane,
- 4) The test was performed with a vertical ground reference plane. The rear of the EUT shall be 0.4 m from the vertical ground reference plane. The vertical ground reference plane was bonded to the horizontal ground reference plane. The LISN 1 was placed 0.8 m from the boundary of the unit under test and bonded to a ground reference plane for LISNs mounted on top of the ground reference plane. This distance was between the closest points of the LISN 1 and the EUT. All other units of the EUT and associated equipment was at least 0.8 m from the LISN 2.
- 5) In order to find the maximum emission, the relative positions of equipment and all of the interface cables must be changed according to ANSI C63.4 on conducted measurement.

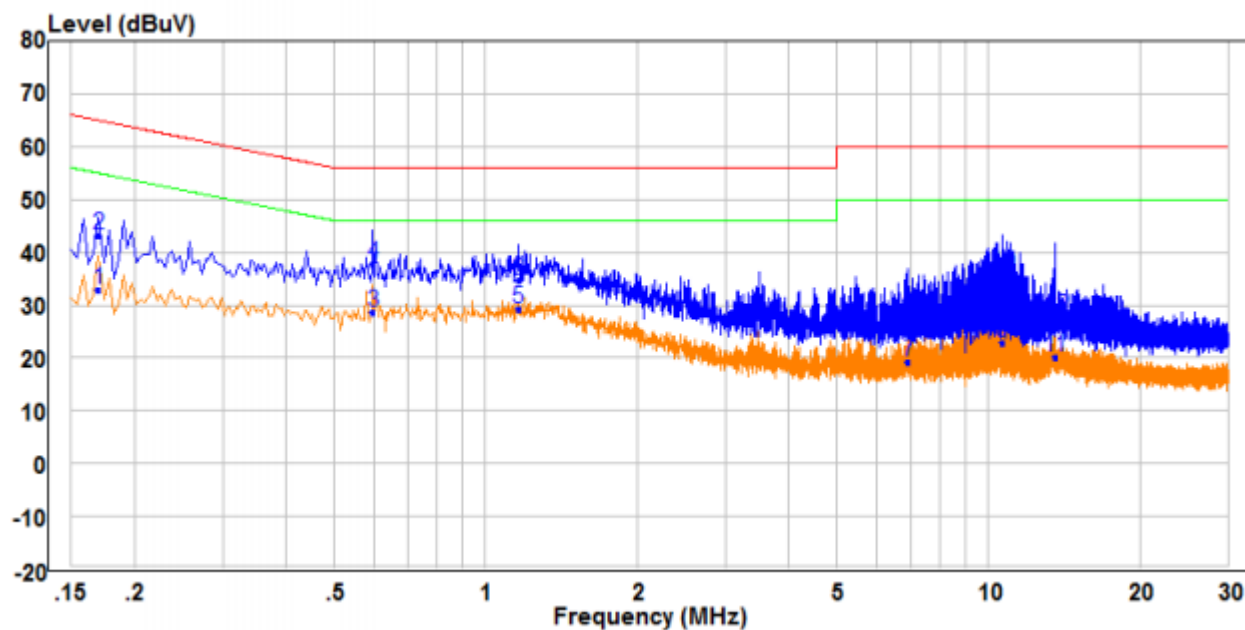
Pass

Measurement Data

An initial pre-scan was performed on the live and neutral lines with peak detector.

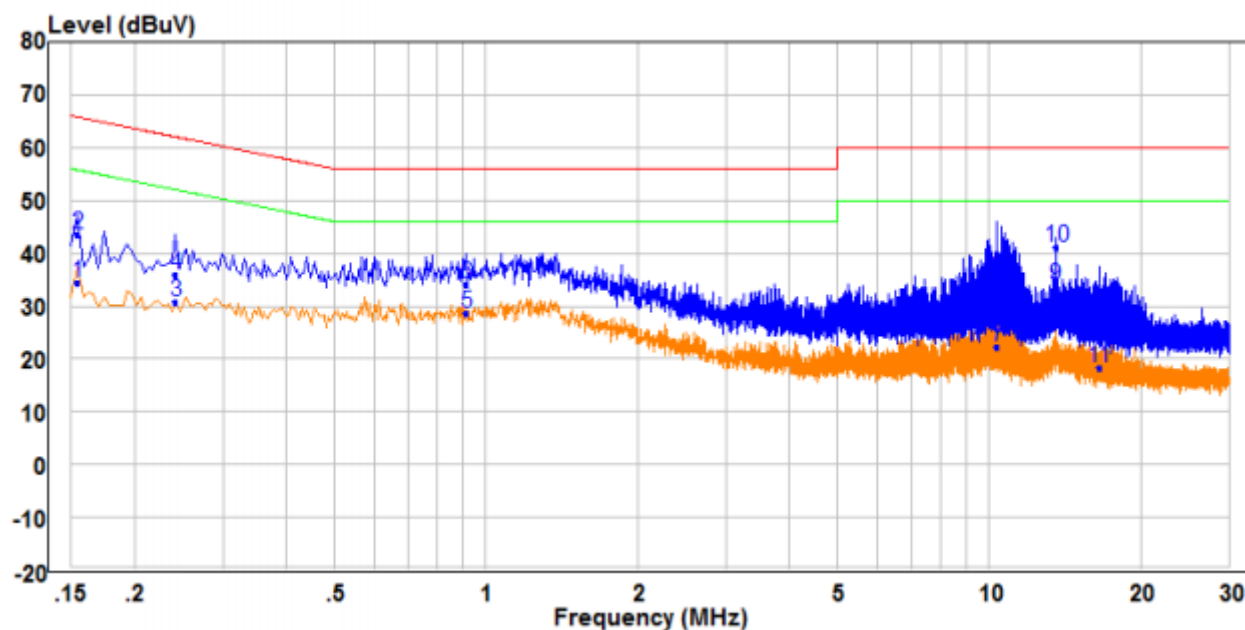
Quasi-Peak and Average measurement were performed at the frequencies with maximized peak emission were detected.

Live Line:



	Read Freq	Level	Factor	Level	Limit Line	Over Limit	Remark	Pol/Phase
	MHz	dBuV	dB	dBuV	dBuV	dB		
1	0.170	23.27	9.49	32.76	54.96	-22.20	Average	Line
2	0.170	33.63	9.49	43.12	64.96	-21.84	QP	Line
3	0.598	19.09	9.70	28.79	46.00	-17.21	Average	Line
4 QP	0.598	27.93	9.70	37.63	56.00	-18.37	QP	Line
5 PP	1.162	19.68	9.53	29.21	46.00	-16.79	Average	Line
6	1.162	25.16	9.53	34.69	56.00	-21.31	QP	Line
7	6.910	9.68	9.69	19.37	50.00	-30.63	Average	Line
8	6.910	18.36	9.69	28.05	60.00	-31.95	QP	Line
9	10.653	13.17	9.82	22.99	50.00	-27.01	Average	Line
10	10.653	26.27	9.82	36.09	60.00	-23.91	QP	Line
11	13.541	10.24	9.87	20.11	50.00	-29.89	Average	Line
12	13.541	17.77	9.87	27.64	60.00	-32.36	QP	Line

Neutral Line:



	Freq	Read Level	Factor	Level	Limit Line	Over Limit	Remark	Pol/Phase
	MHz	dBuV	dB	dBuV	dBuV	dB		
1	0.154	24.99	9.48	34.47	55.78	-21.31	Average	Neutral
2	0.154	33.96	9.48	43.44	65.78	-22.34	QP	Neutral
3	0.242	21.34	9.48	30.82	52.03	-21.21	Average	Neutral
4	0.242	26.61	9.48	36.09	62.03	-25.94	QP	Neutral
5	0.914	19.03	9.76	28.79	46.00	-17.21	Average	Neutral
6	0.914	24.21	9.76	33.97	56.00	-22.03	QP	Neutral
7	10.369	12.40	9.94	22.34	50.00	-27.66	Average	Neutral
8	10.369	25.50	9.94	35.44	60.00	-24.56	QP	Neutral
9 PP	13.557	23.91	9.93	33.84	50.00	-16.16	Average	Neutral
10 QP	13.557	31.21	9.93	41.14	60.00	-18.86	QP	Neutral
11	16.517	8.46	9.96	18.42	50.00	-31.58	Average	Neutral
12	16.517	18.22	9.96	28.18	60.00	-31.82	QP	Neutral

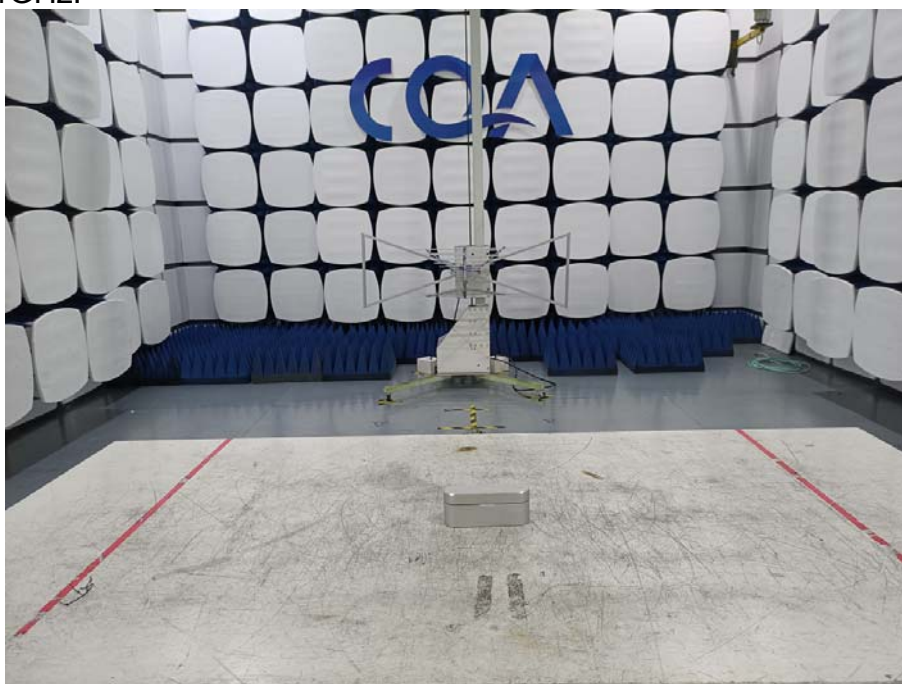
6 Photographs - EUT Test Setup

6.1 Radiated Emission

9KHz~30MHz:



30MHz~1GHz:

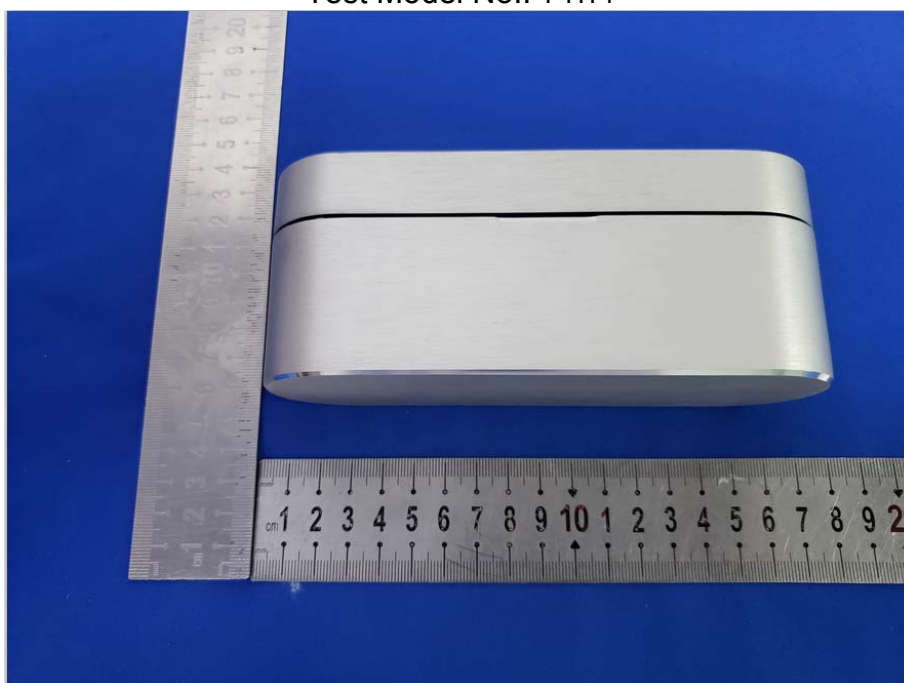


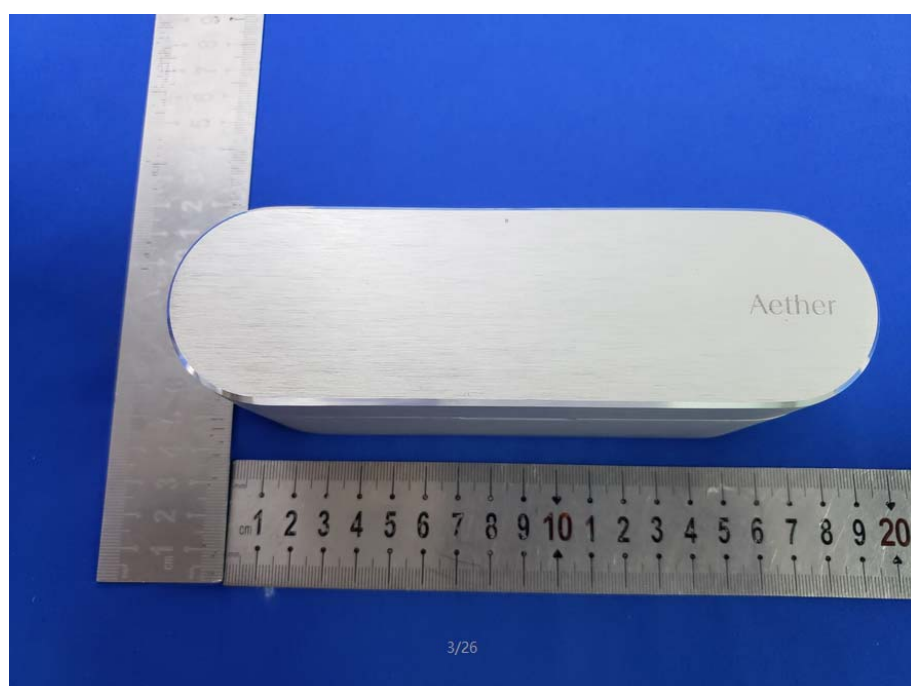
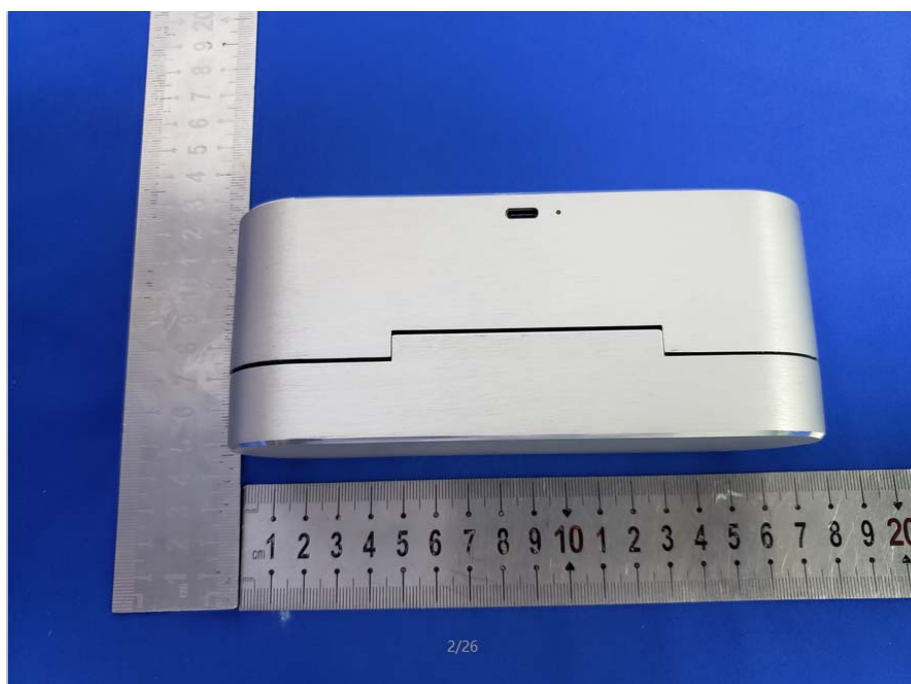
Conducted Emissions Test Setup

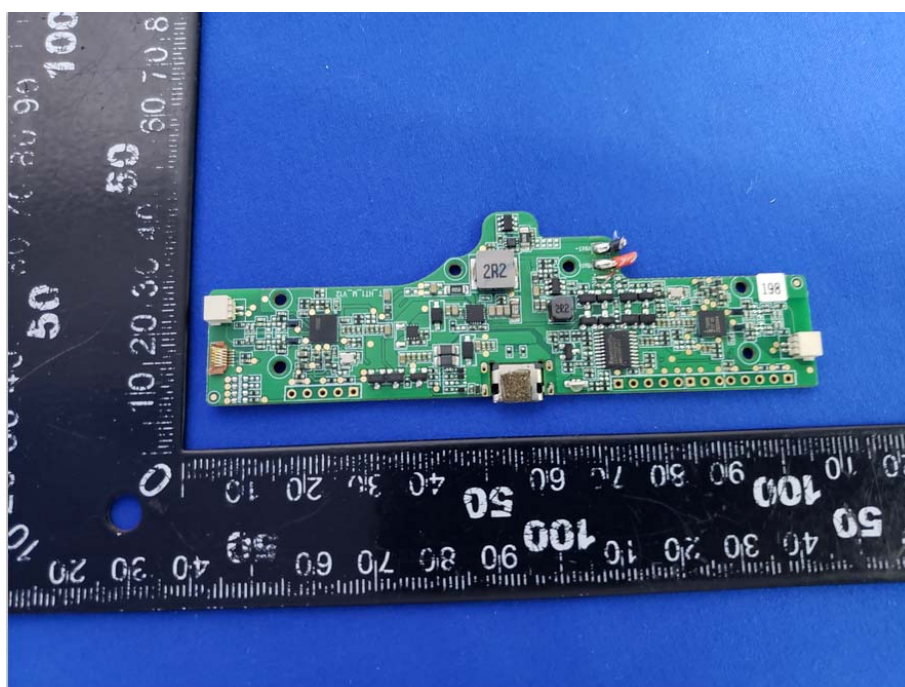


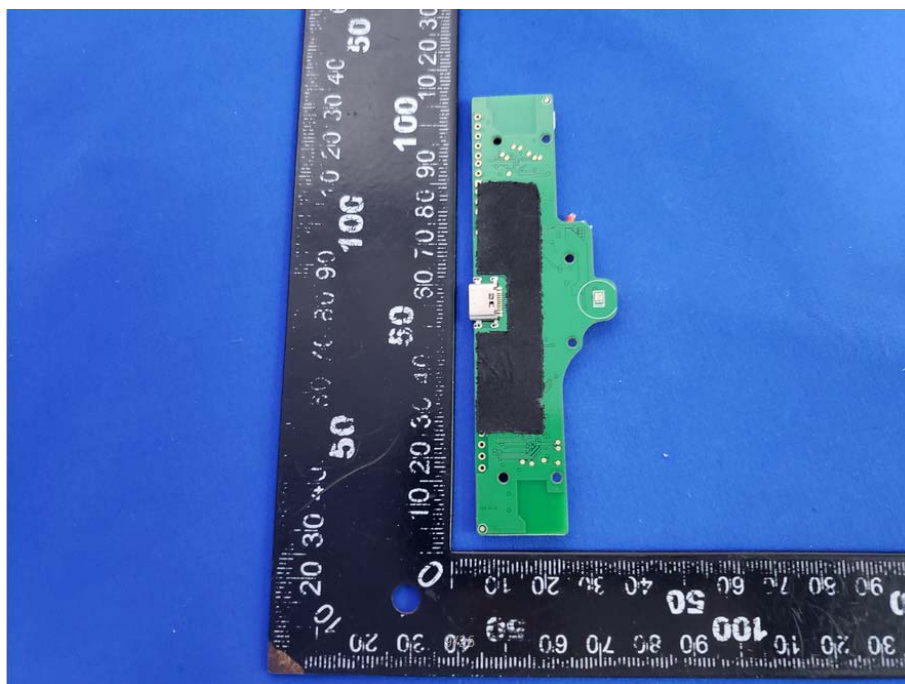
7 Photographs - EUT Constructional Details

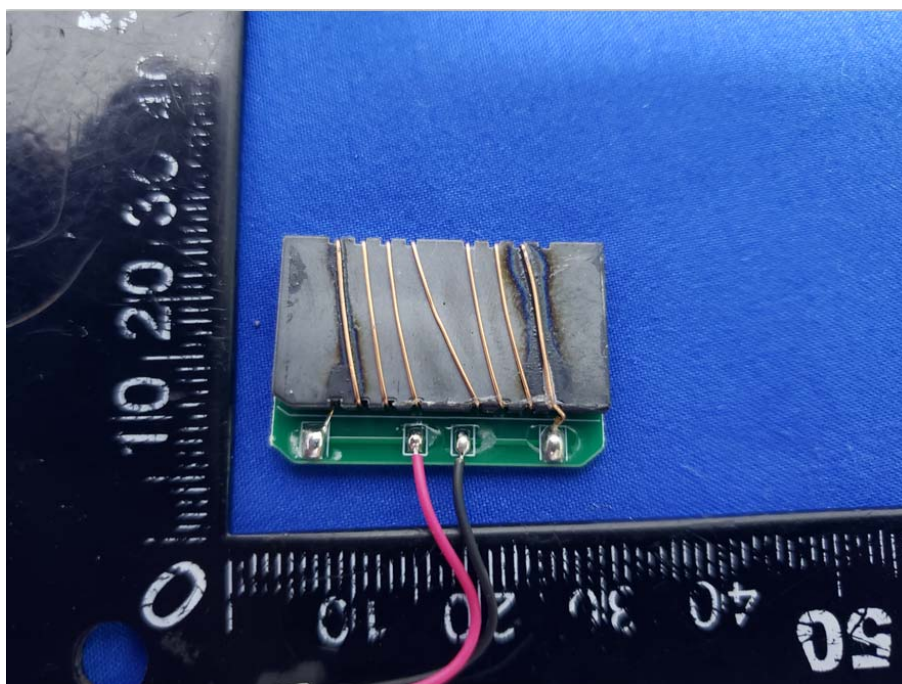
Test Model No.: T-HT1











The End