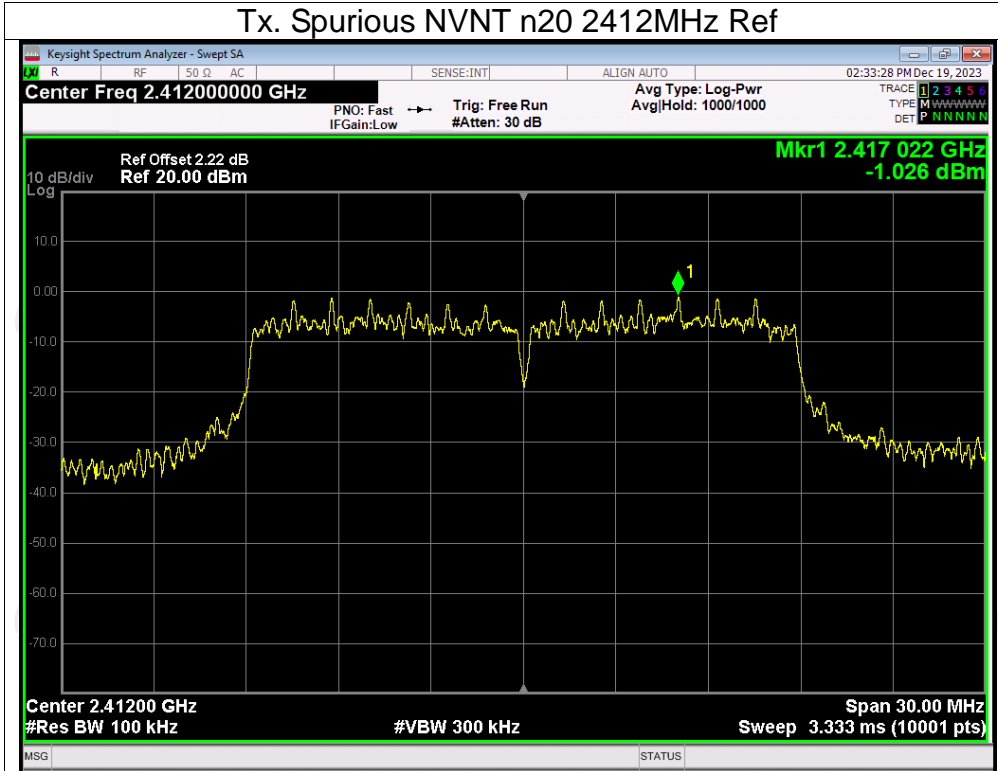
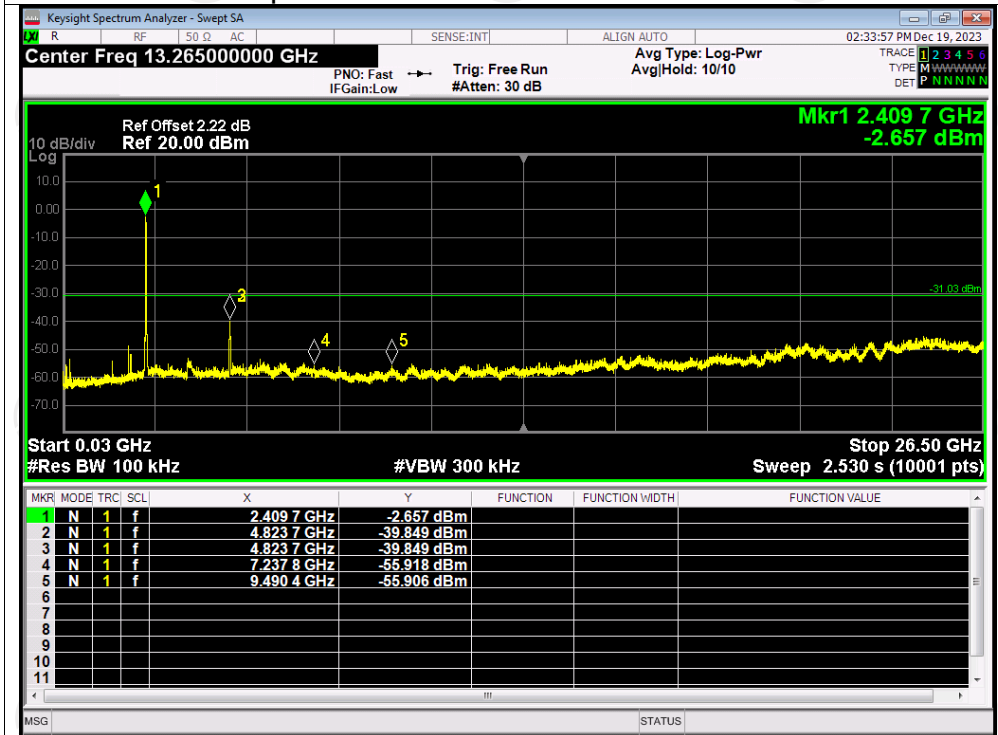


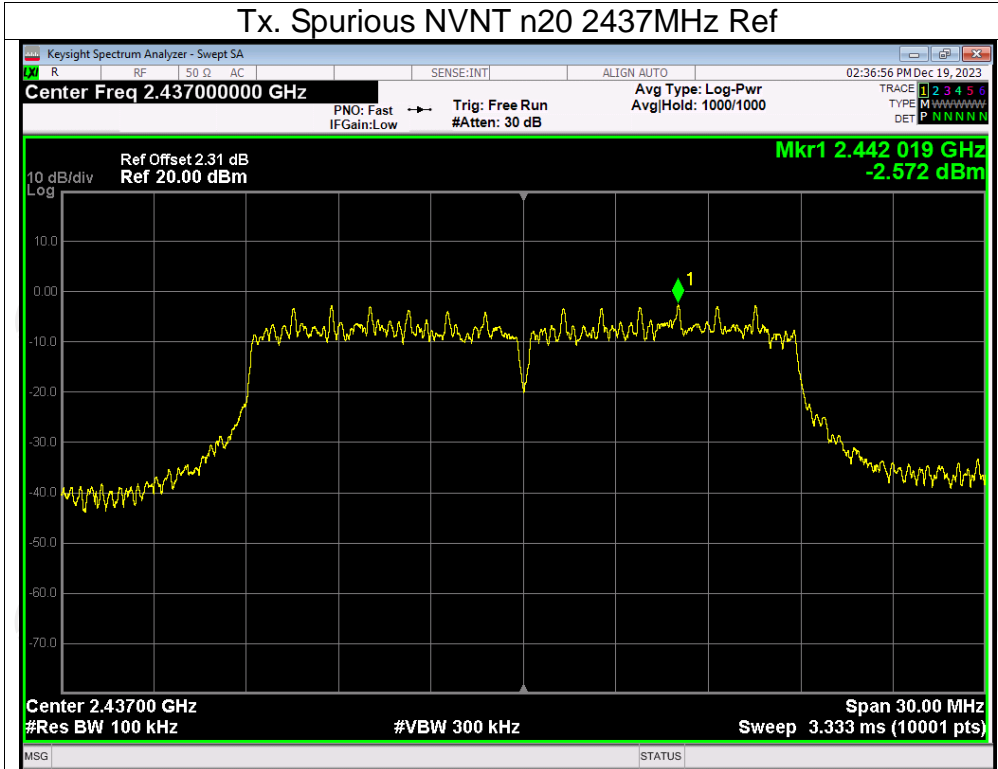
Tx. Spurious NVNT n20 2412MHz Ref



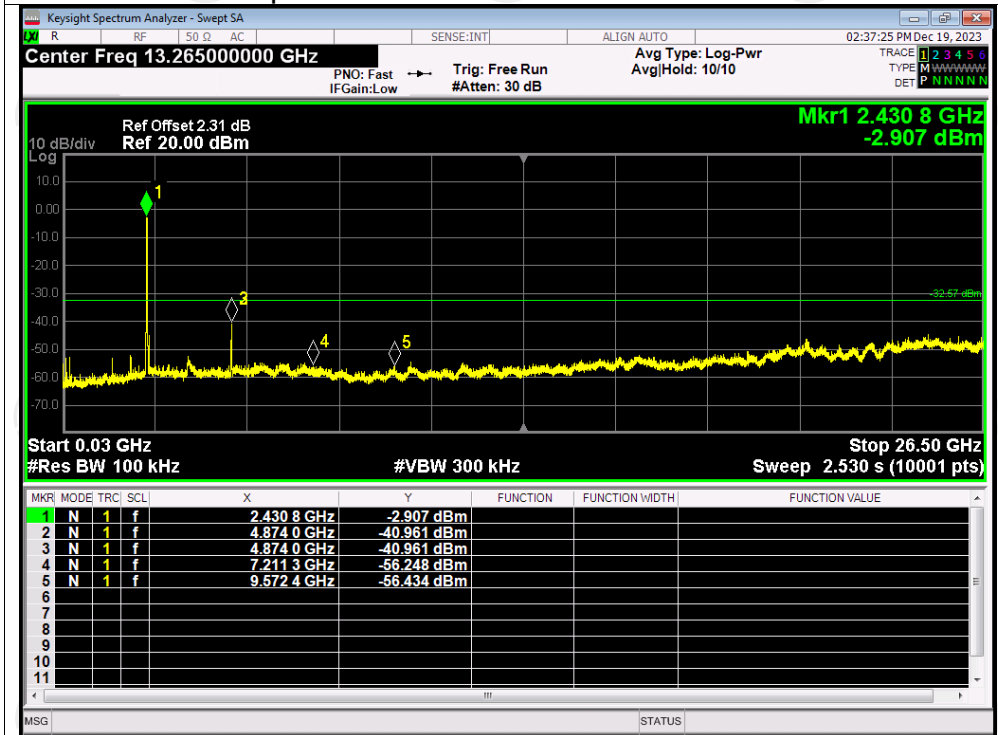
Tx. Spurious NVNT n20 2412MHz Emission



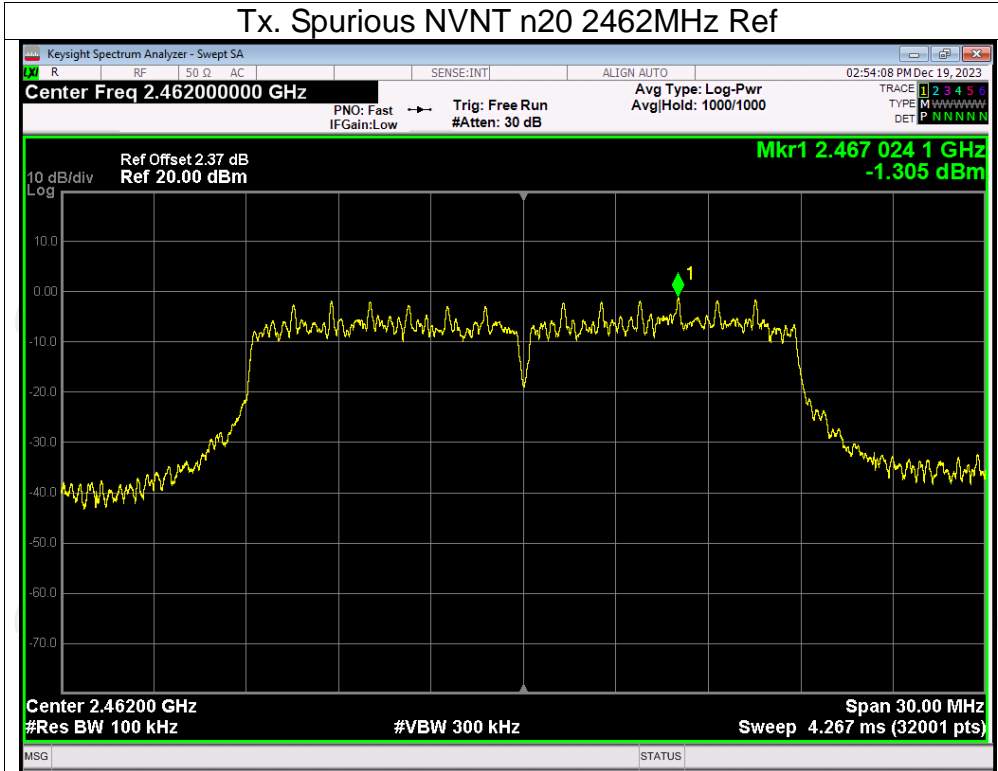
Tx. Spurious NVNT n20 2437MHz Ref



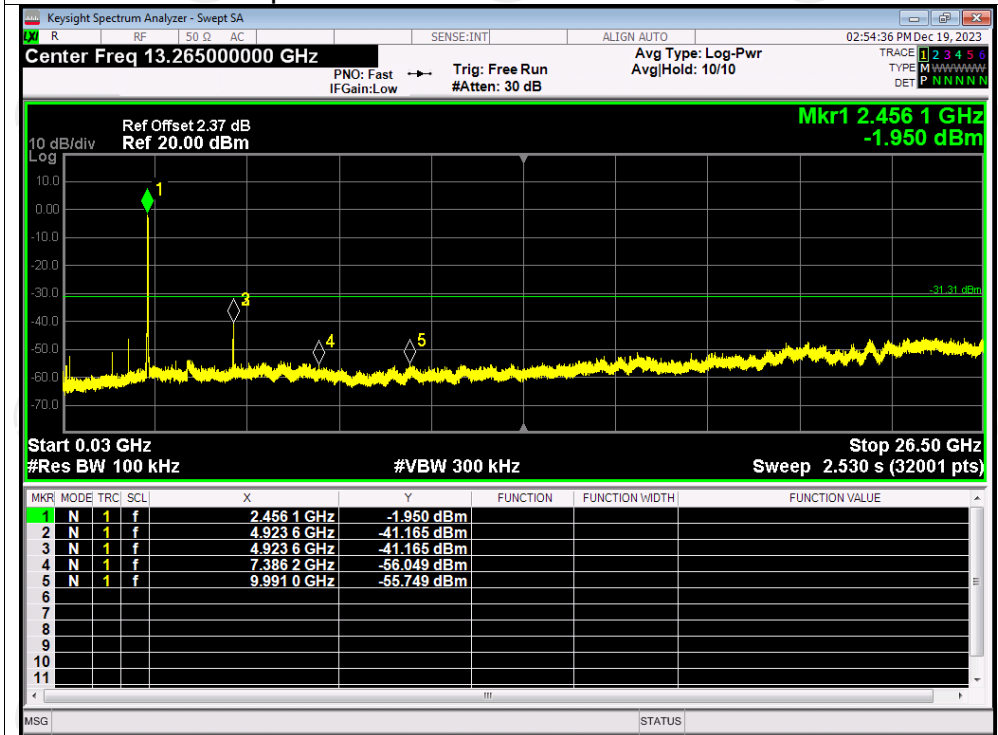
Tx. Spurious NVNT n20 2437MHz Emission



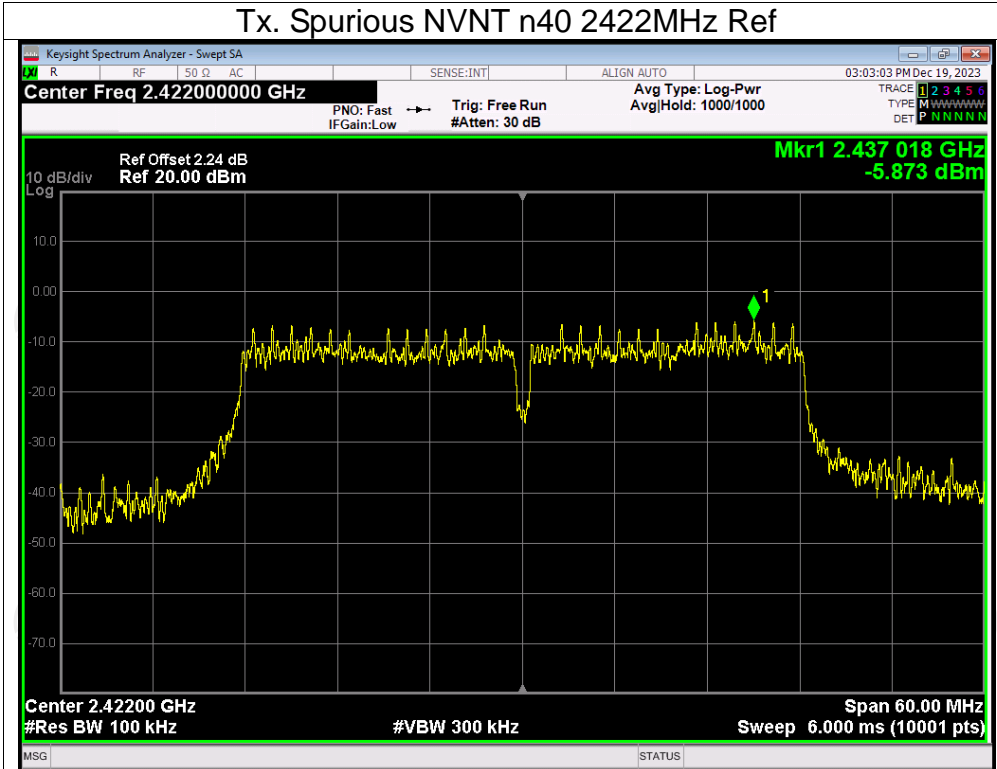
Tx. Spurious NVNT n20 2462MHz Ref



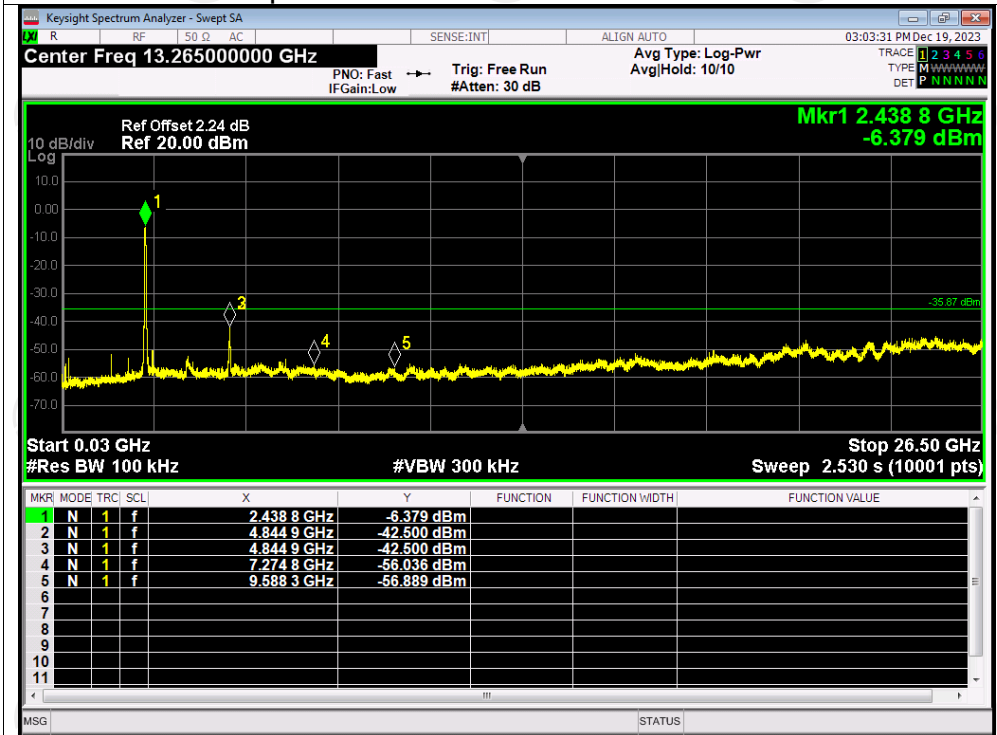
Tx. Spurious NVNT n20 2462MHz Emission



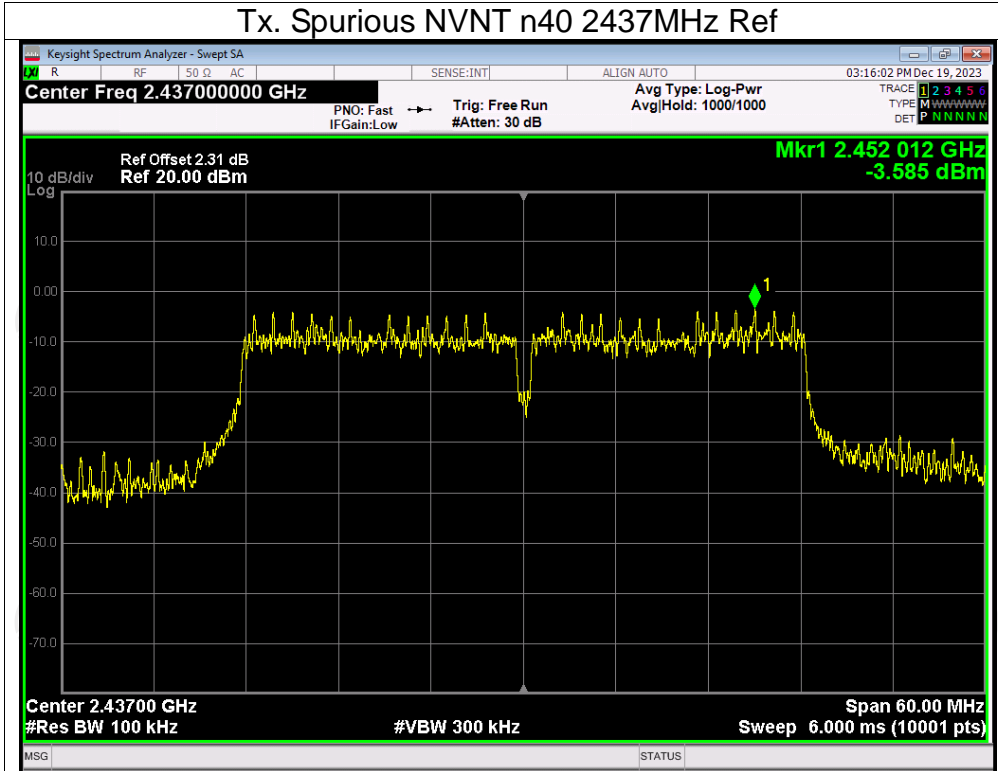
Tx. Spurious NVNT n40 2422MHz Ref



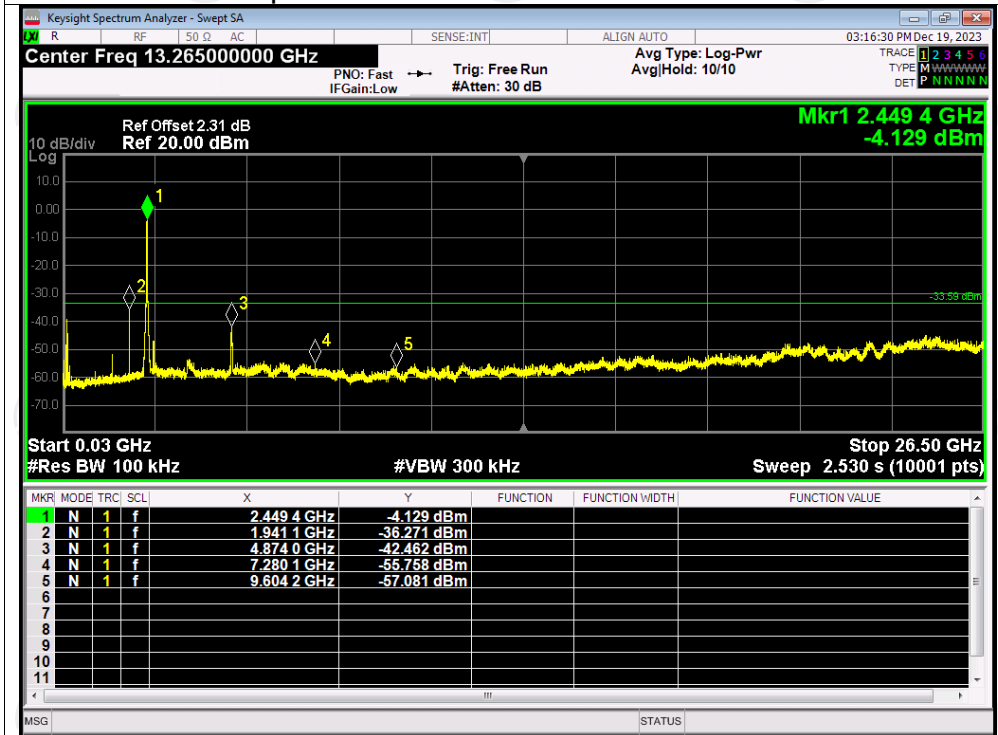
Tx. Spurious NVNT n40 2422MHz Emission



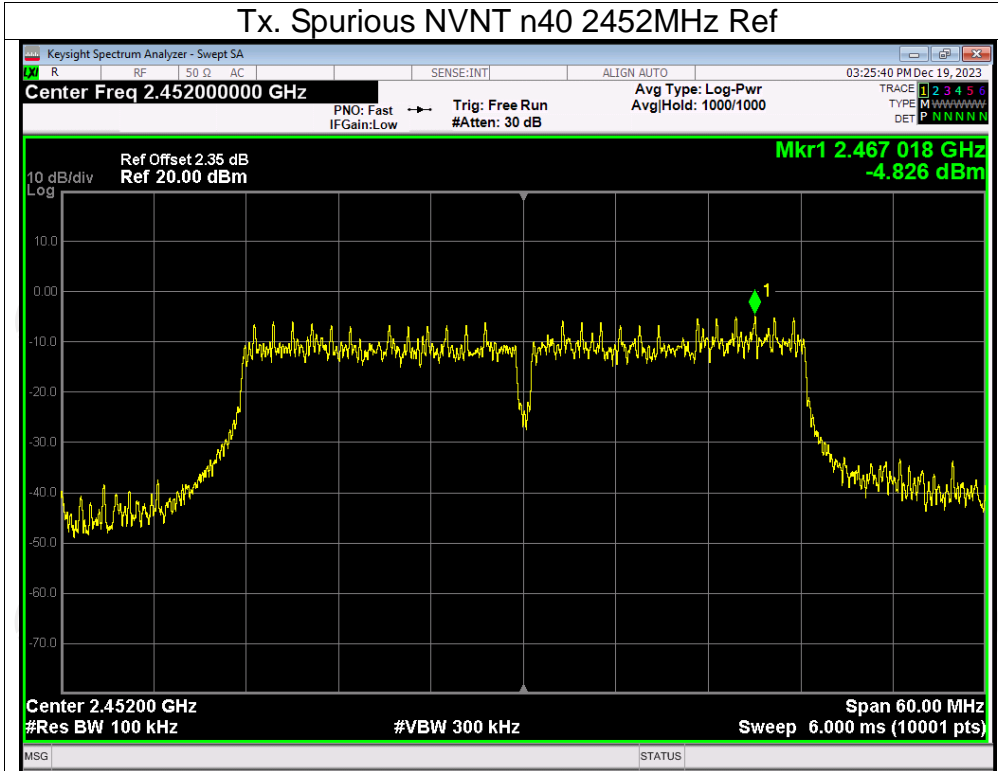
Tx. Spurious NVNT n40 2437MHz Ref



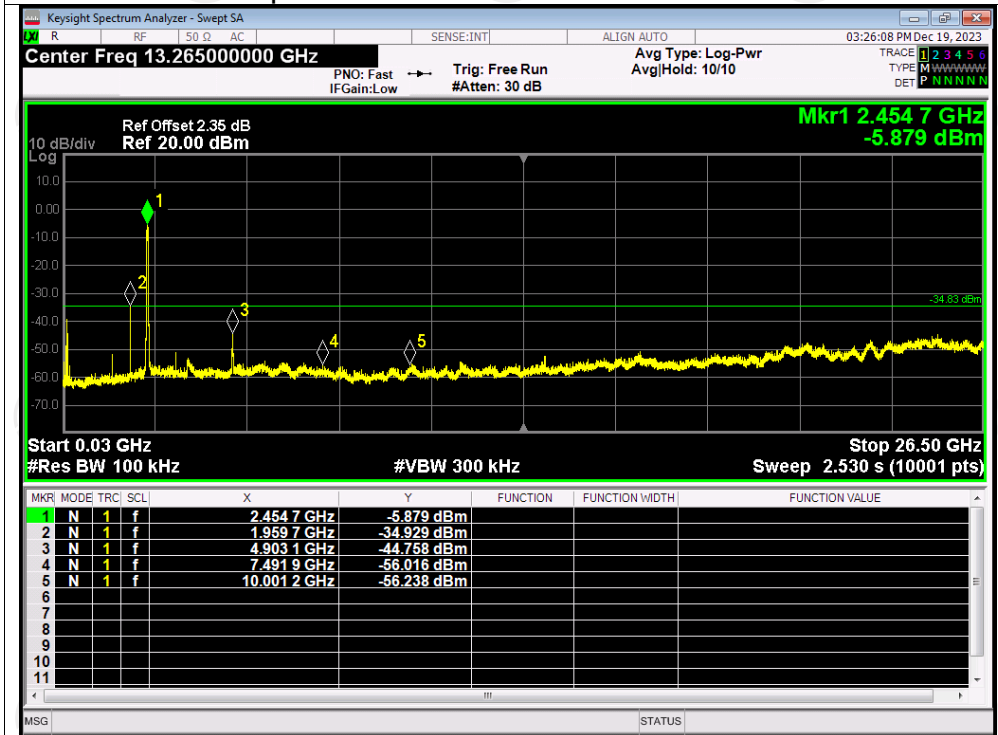
Tx. Spurious NVNT n40 2437MHz Emission



Tx. Spurious NVNT n40 2452MHz Ref



Tx. Spurious NVNT n40 2452MHz Emission

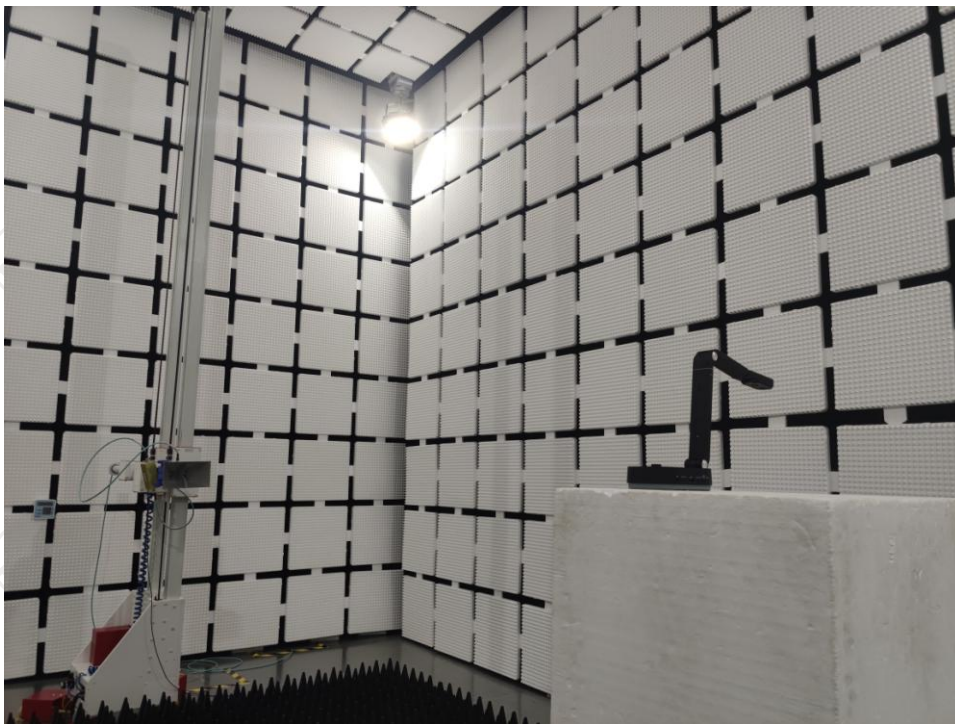


Appendix B: Photographs of Test Setup

Product: 4K Wireless Document Camera

Model: DC200

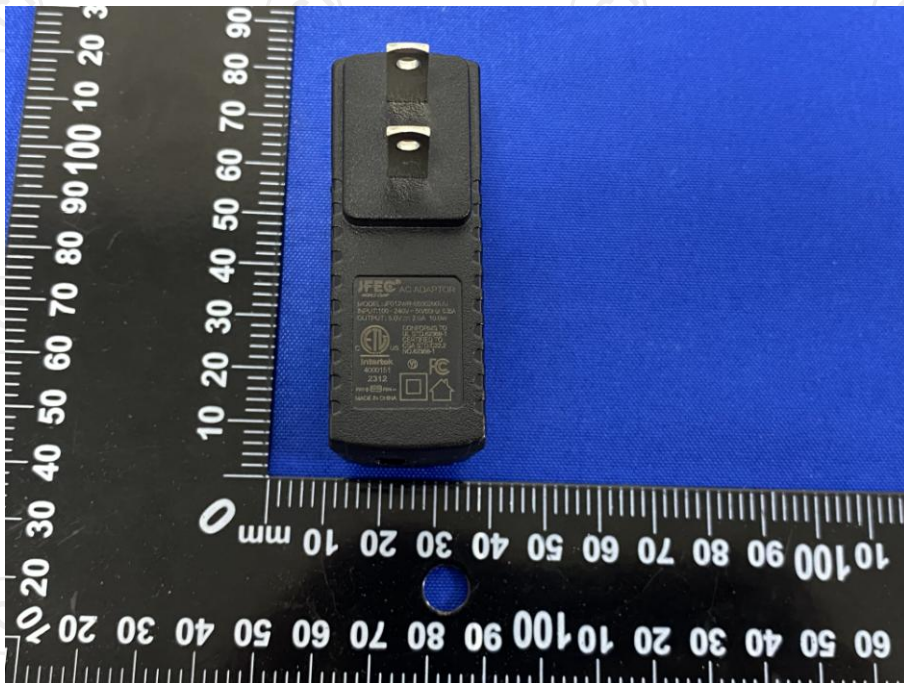
Radiated Emission

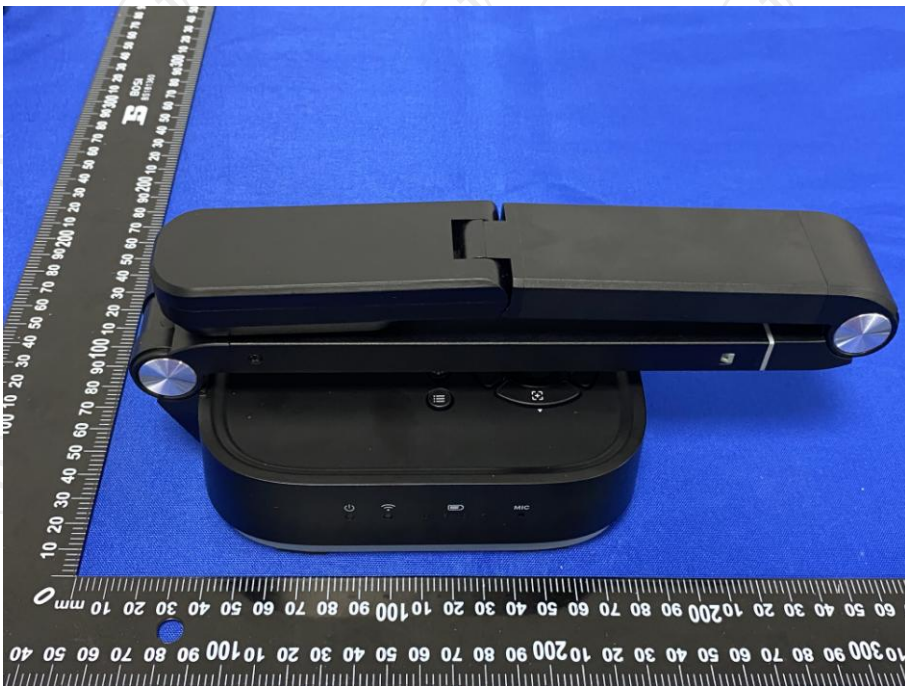


Conducted Emission

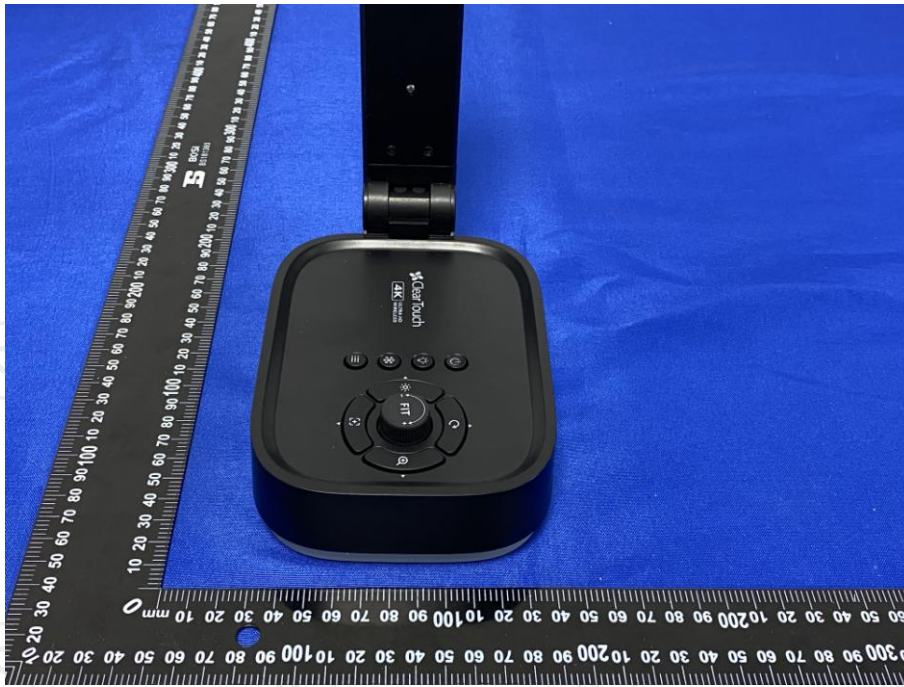


Appendix C: Photographs of EUT
Product: 4K Wireless Document Camera
Model: DC200
External Photos

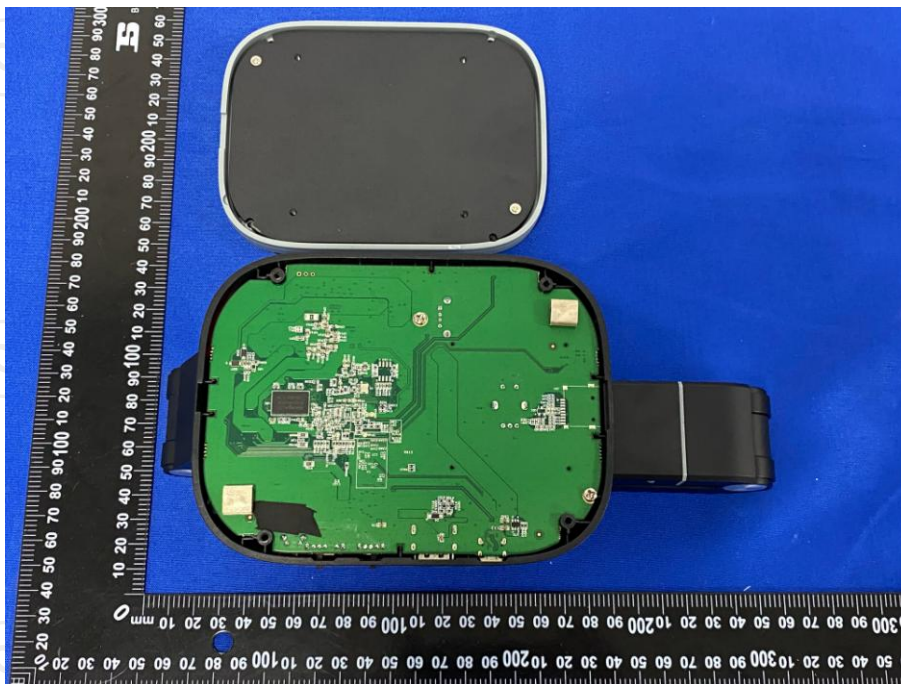


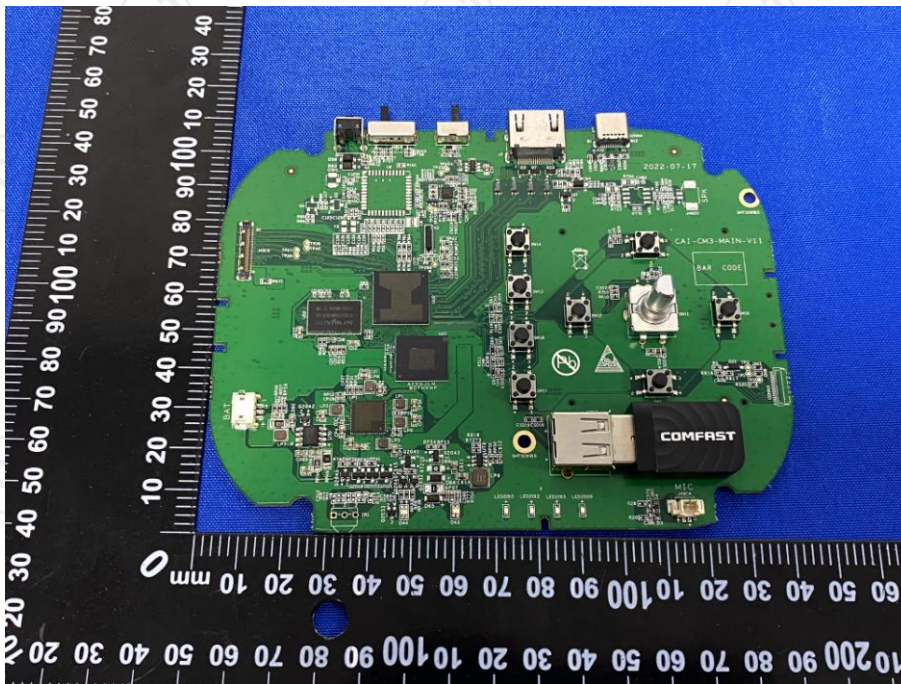
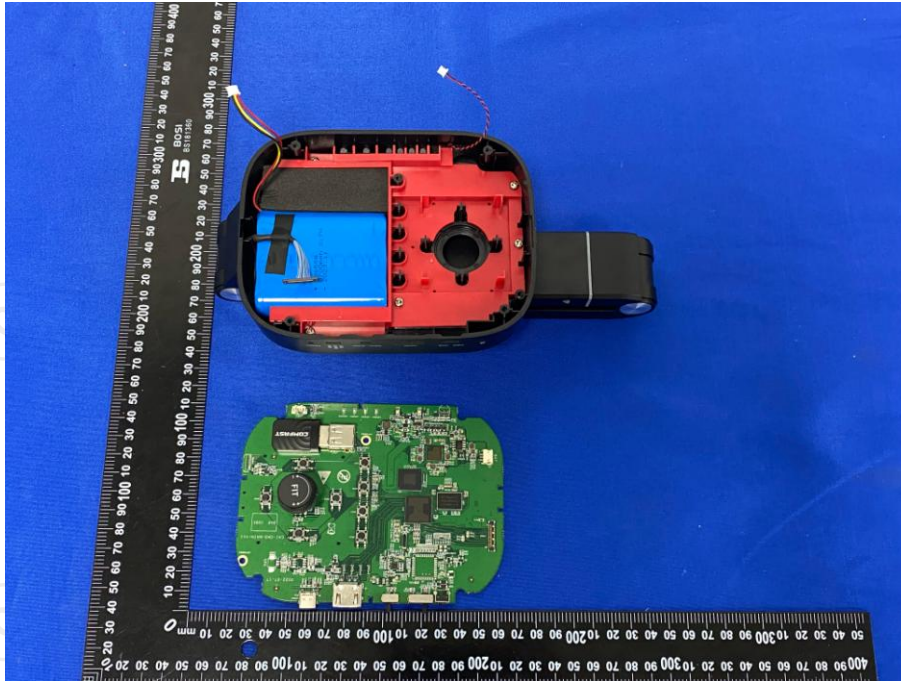


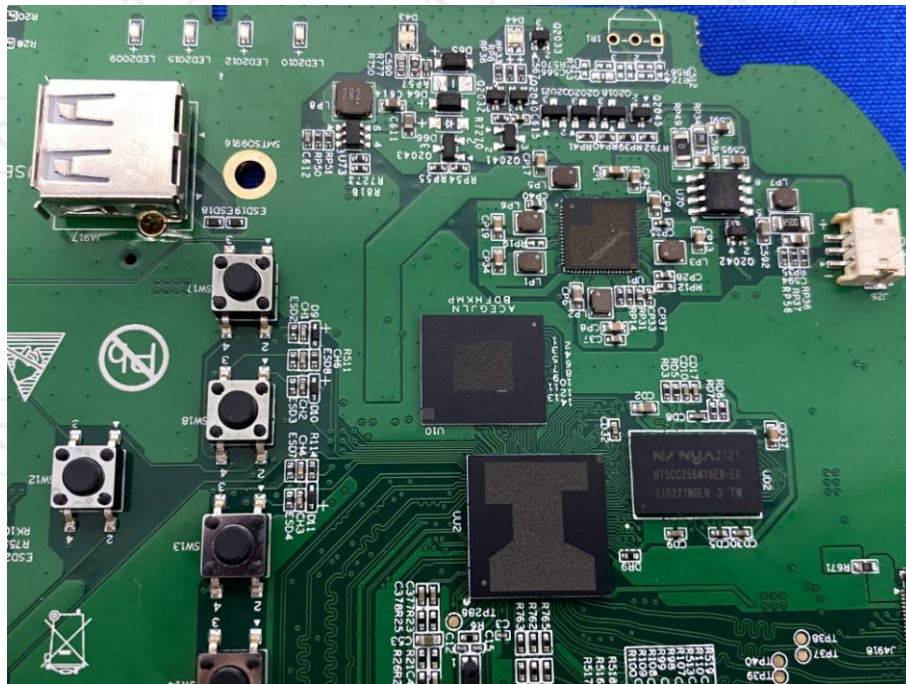
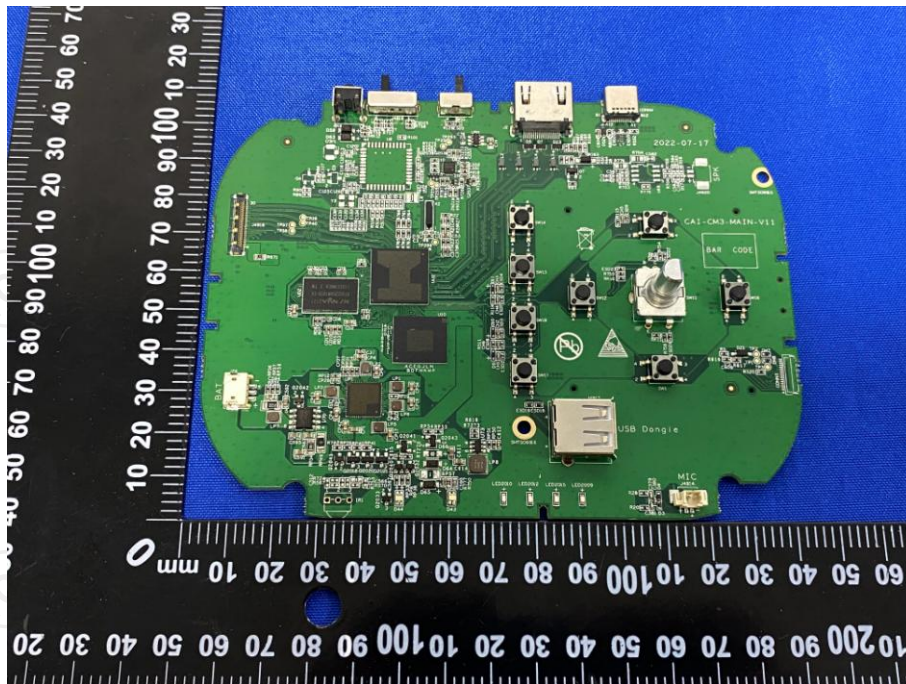


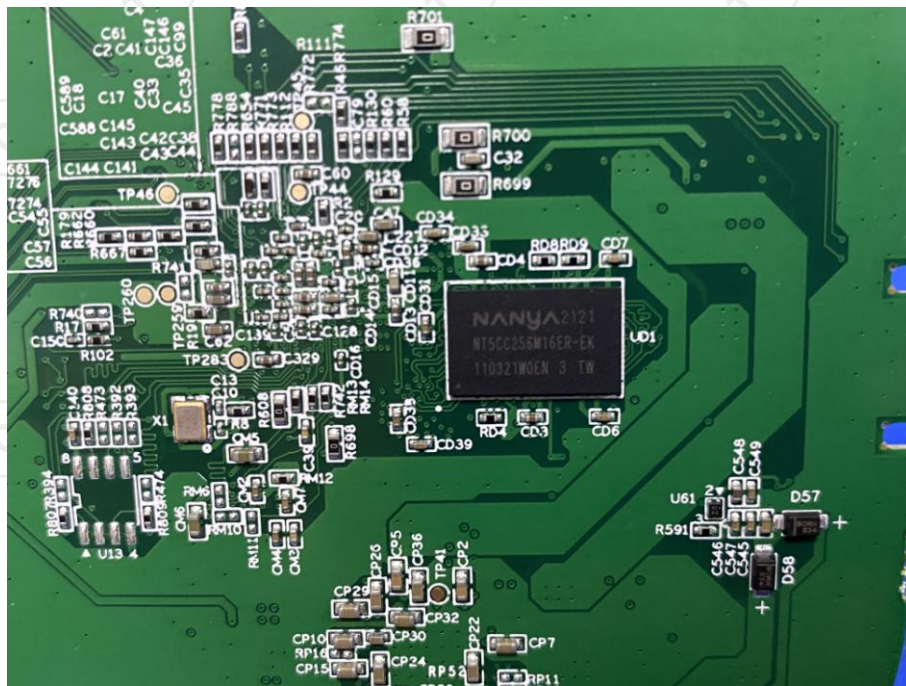
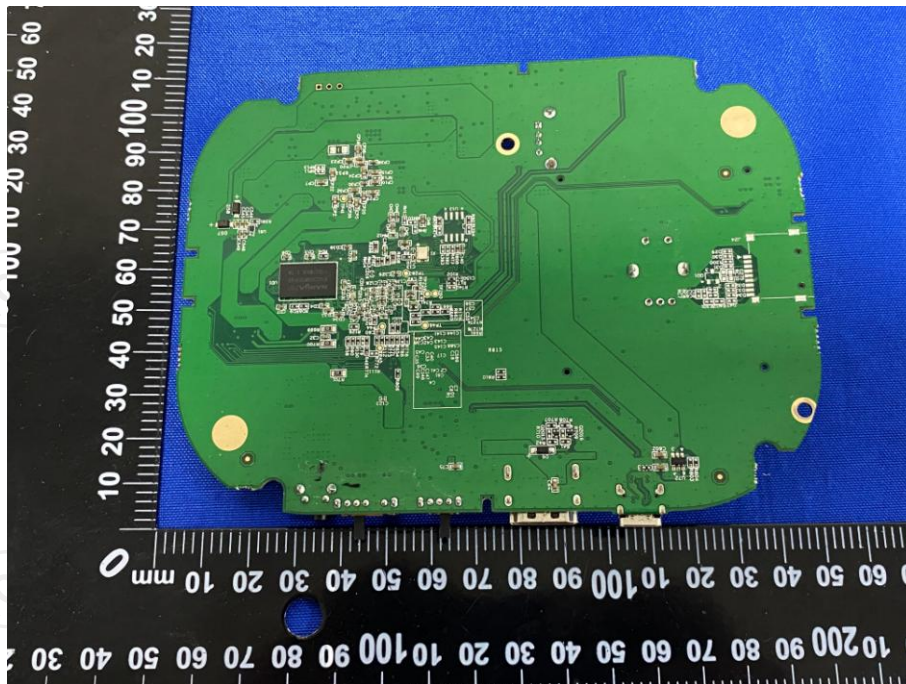


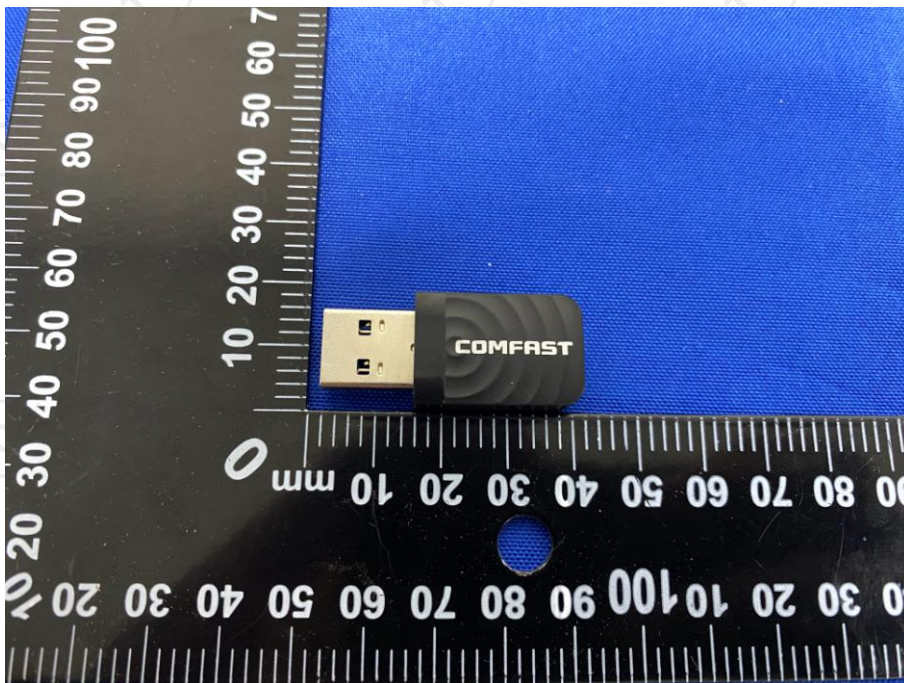
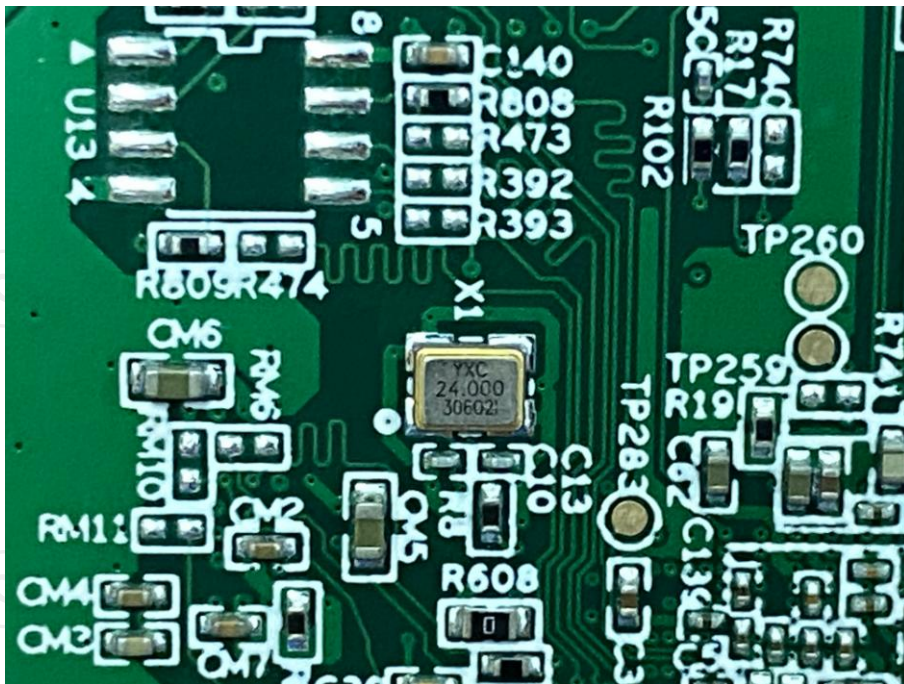
Product: 4K Wireless Document Camera
Model: DC200
Internal Photos

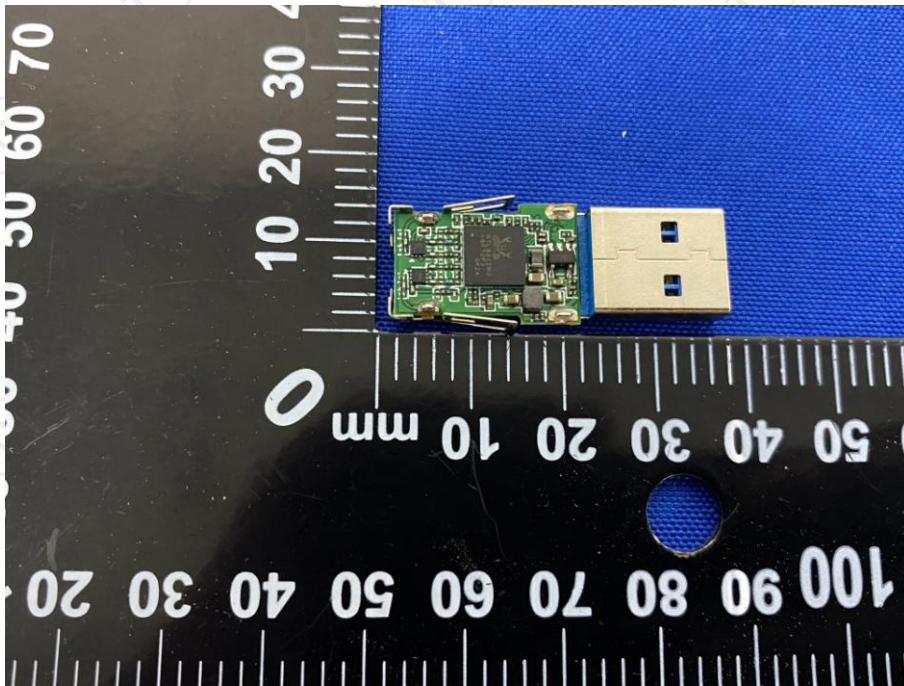
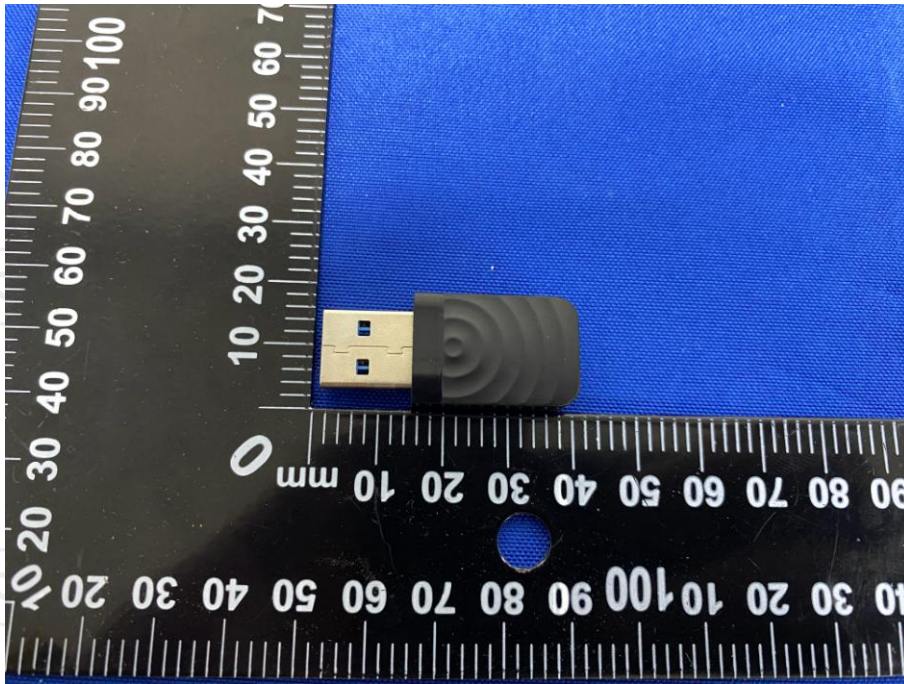


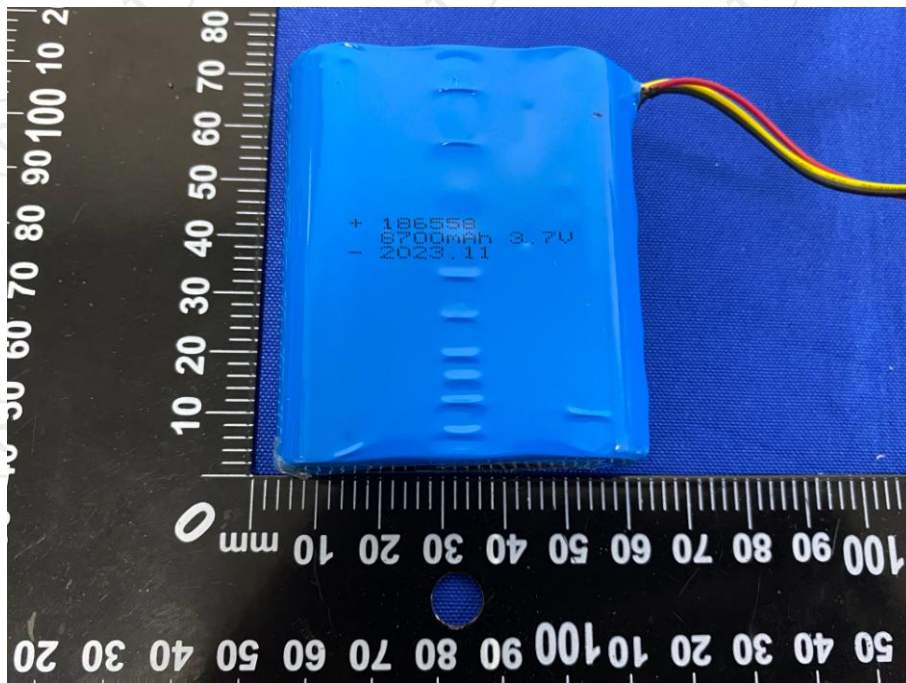
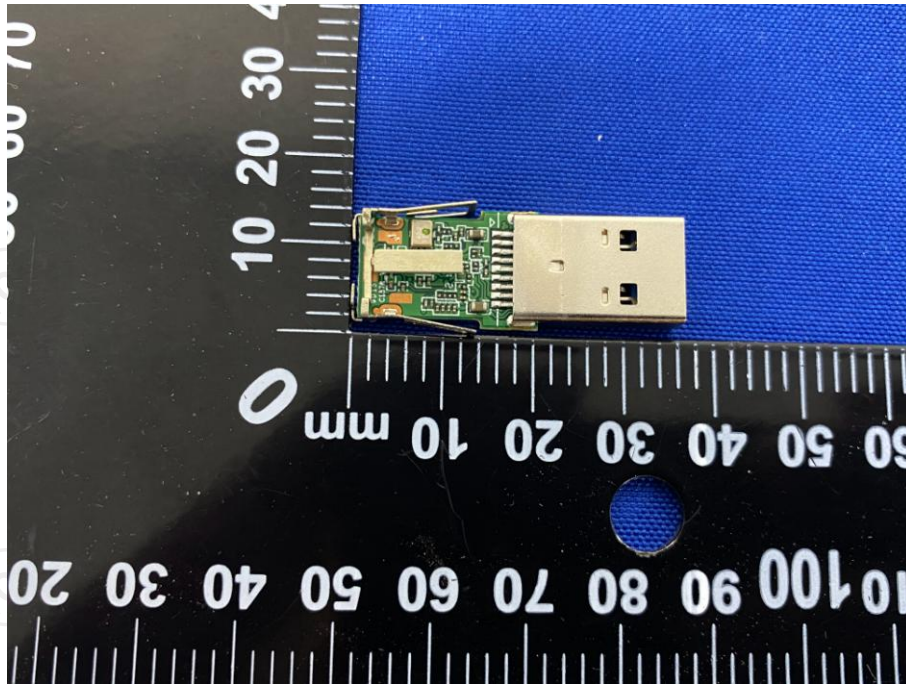


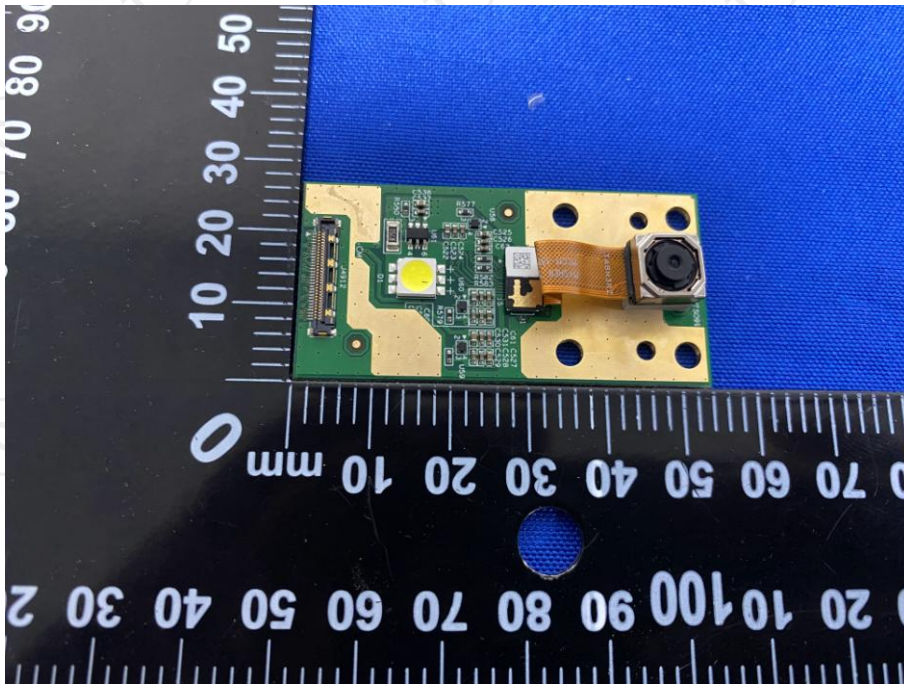


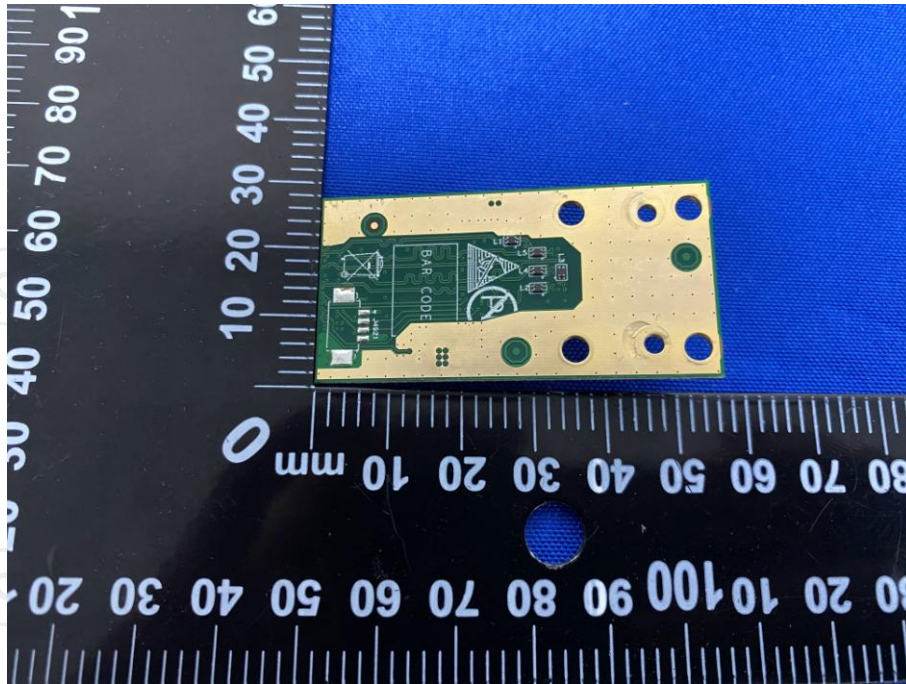












*******END OF REPORT*******