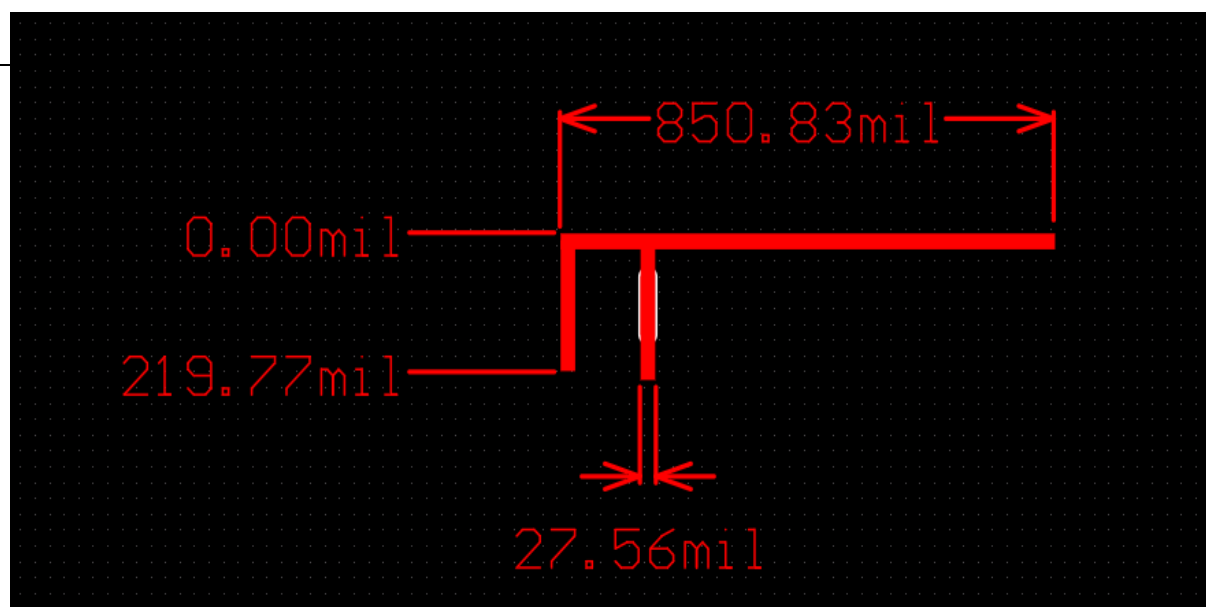
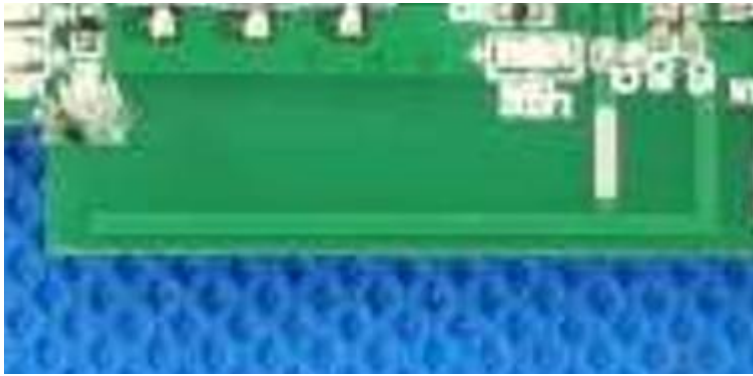


主要技术指标		Main technical specifications	
频率 (MHz)	2400-2500	Frequency (MHz)	2400-2500
特性阻抗 ( $\Omega$ )	$50 \pm 10$	Impedance ( $\Omega$ )	$50 \pm 10$
增益 (dBi)	max 2.26	Gain(dBi)	max 2.26
输出电压驻波比	<1.0	VSWR	<1.0
最大功率	1mW	Admitted power	1mW
极化方式	垂直极化	Polarization	Linear, Vertical
方向性	全向性	Radiation	Omni-directional
连接方式	SMA	Connector Type	SMA
物理性能		Physical properties	
天线材料	PCB	Antenna base	PCB
工作温度	-20°C ~ +60°C	Operating temp	-20°C ~ +60°C
保存温度	-20°C ~ +70°C	Storage temp	-20°C ~ +70°C



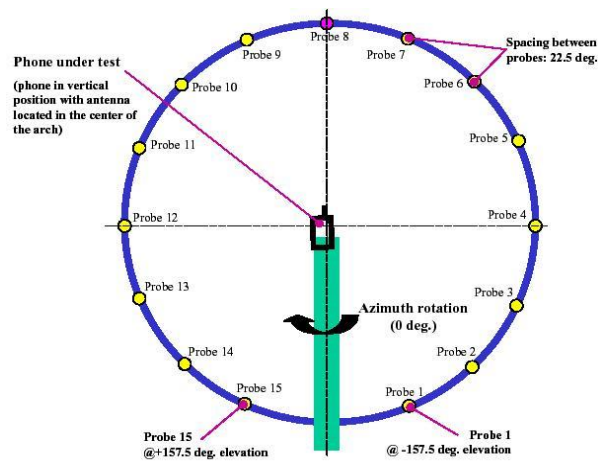
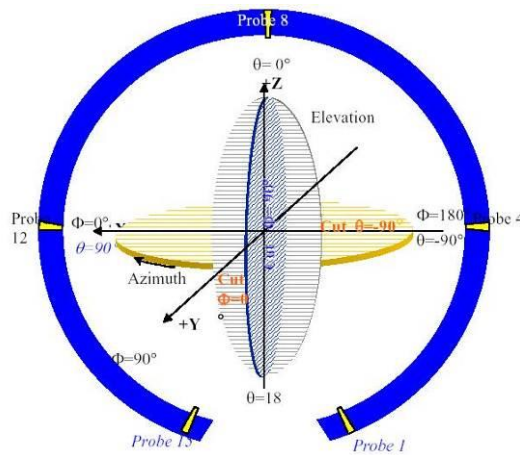


### 3D Radiation Pattern:

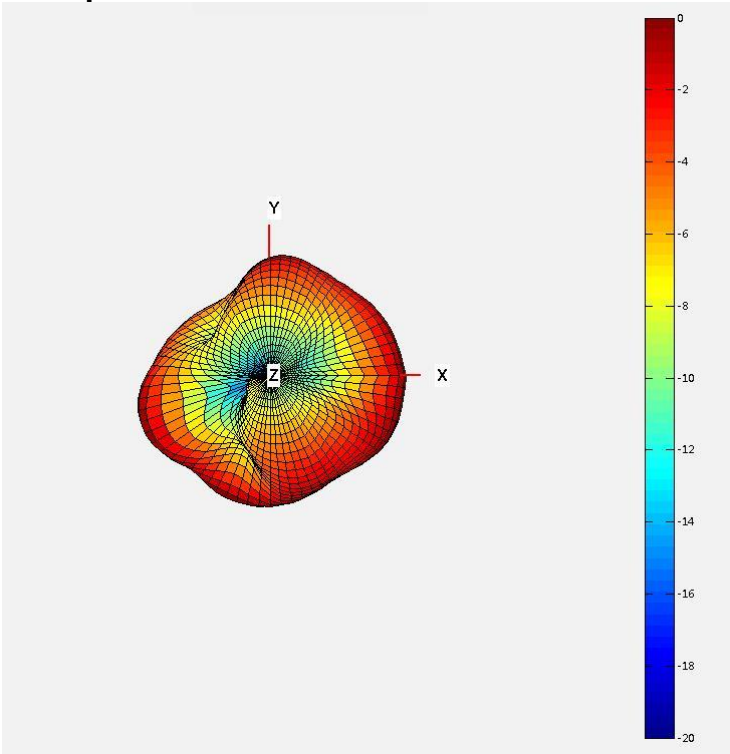
Test environment :

Room temperature : 25°C Humidity : 45%

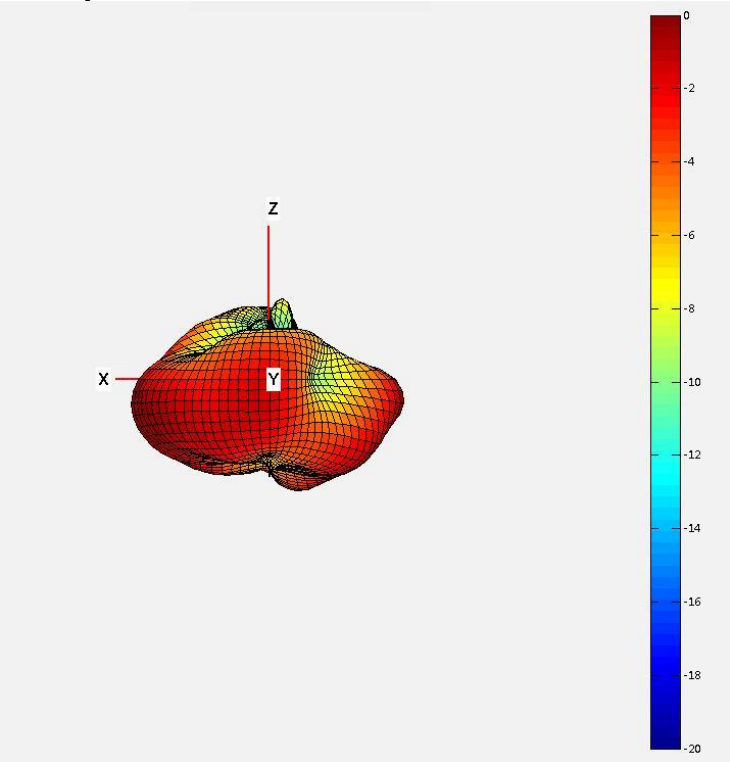
Test schematic:



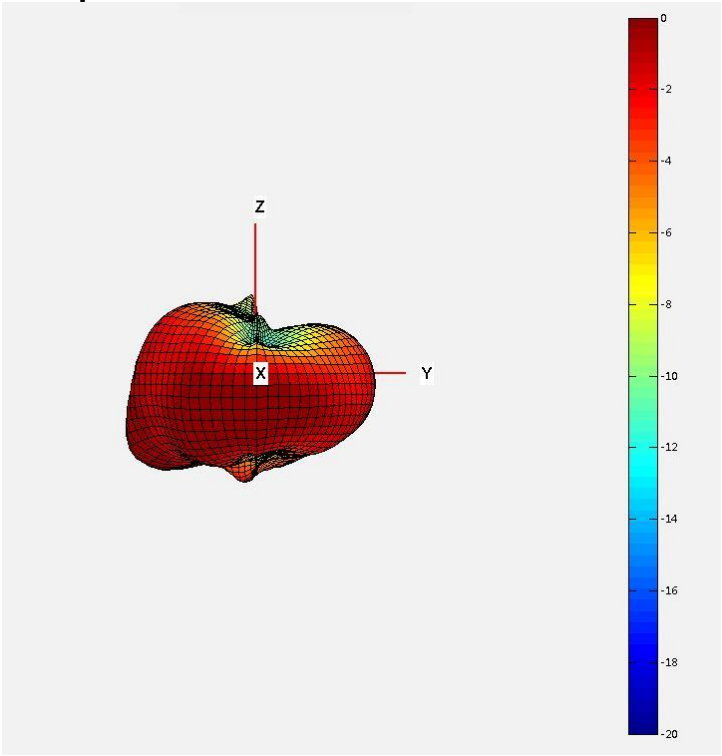
2400MHz X-Y plane



2450MHz X-Z plane



**2500MHz Y-Z plane**



**Passive Performance:**

Frequency (MHz)	Total Gain (dBi)	Efficiency (%)
2400	1.66	45.08
2450	2.26	46.13
2500	1.7	35.32