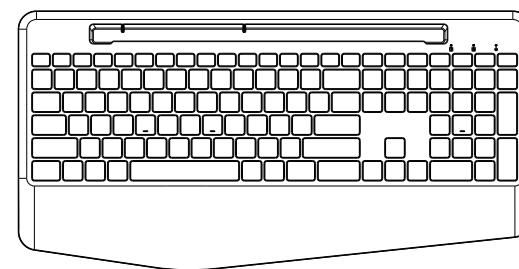


尺寸 : 105x148mm

材质 : 100g书纸

工艺 : 双面四色印刷 折页

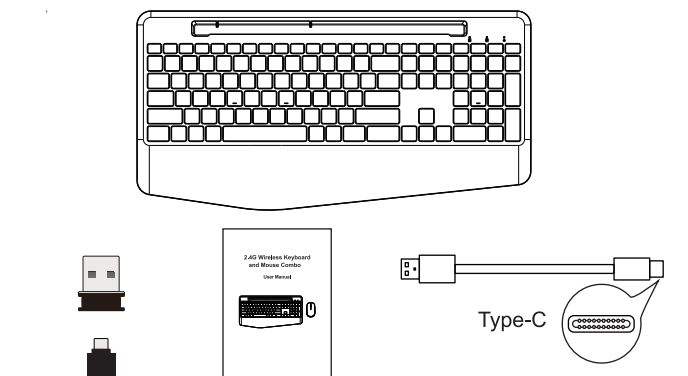
User Manual



Product Specification

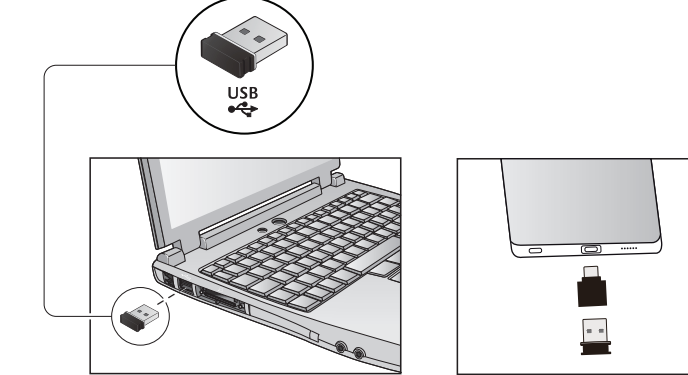
Keyboard parameters:
 Product size: 16.6x8.4x0.67inches
 Product weight: 1.54pounds
 Connectivity:
 Charging time of Keyboard: 6h
 Battery capacity: 1600mAh
 Battery endurance: 15h (with backlight)
 Operating voltage: 3.7V
 Connection distance: 8-10m
Power Saving: Without action in 90 seconds, the backlight will be out on keyboard.

You will receive

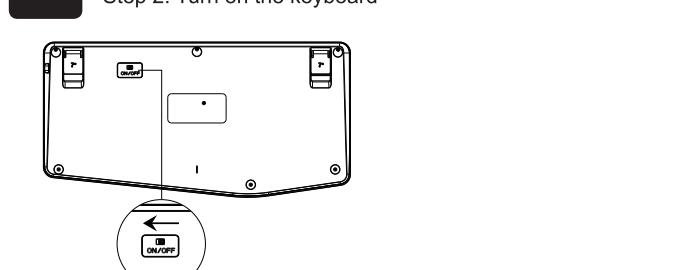


How to set up

1 Step 1: Please put the USB receiver into your computer. If your device comes with Type-C port, you can also use the Adapter.



2 Step 2: Turn on the keyboard

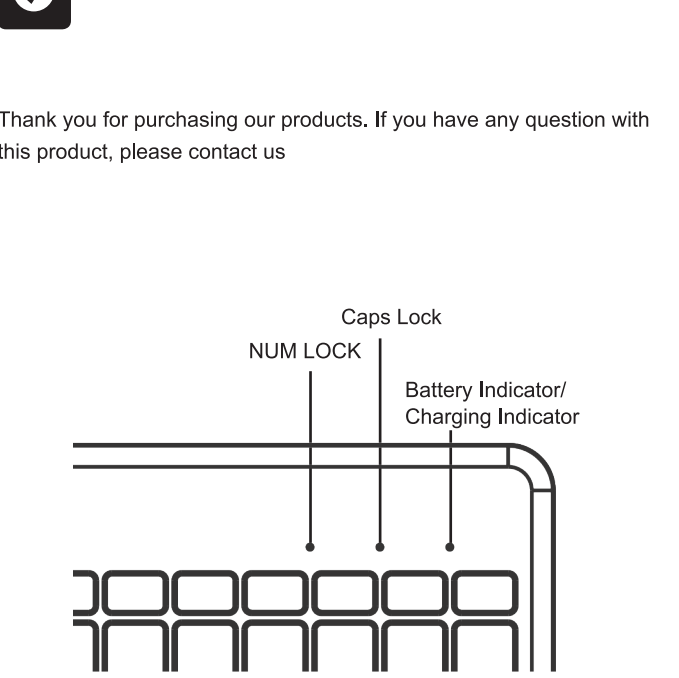


Step 3: The keyboard will automatically connect to the computer, no driver needed.

Instruction of the keyboard backlight

- Press and Hold **Fn** key ,then press **Esc** key to turn on/ turn off backlight
- Press and Hold **Fn** key ,then press **↑** key to increase backlight brightness
- Press and Hold **Fn** key ,then press **↓** key to decrease backlight brightness
- Press and Hold **Fn** key, then press **F1** key to change backlight color.

Thank you for purchasing our products. If you have any question with this product, please contact us



LED Indicator of the Keyboard

Low Battery: the led green light will flash
 Charging: the led red light will be on
 Fully Charged: the led red light will turn off

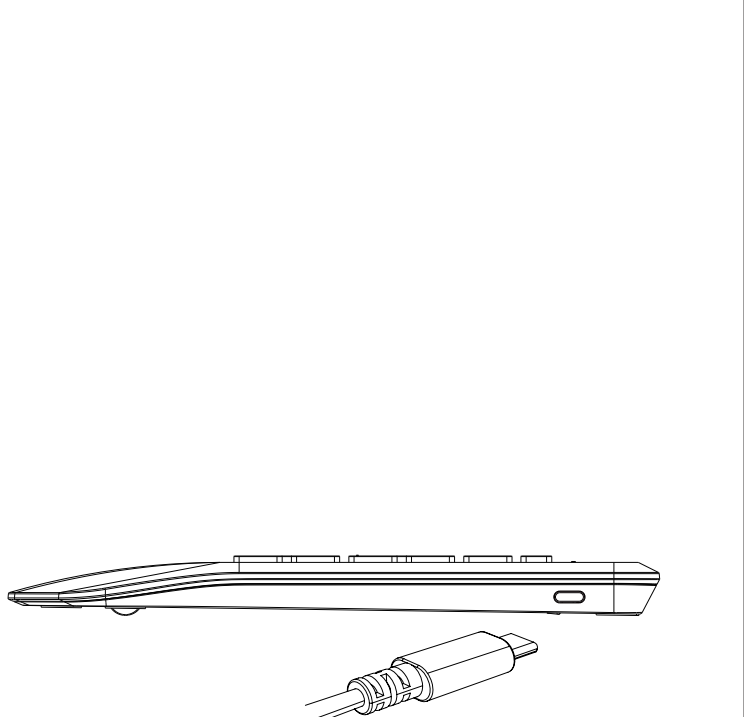
Multimedia button description

The functions down below can be realized by combining FN button.

Esc	Backlight Switch	←	Decrease Volume
F1	Color Switch	→	Increase Volume
F2	Homepage	F3	Internet Explorer favorites

F4	Share	F5	Counter
F6	Multi-task	F7	Set up
F8	Search	F9	Music
F10	Pause/Play	F11	Previous Track
F12	Next Track	⏸	Mute
🔒	Screen Lock	✉	Email
🏠	Operation Center	💻	My Computer
↑	Increase Brightness	↓	Decrease Brightness

Instruction for charging



When you charge the battery, the power indicator shows constant light. When the battery is full of power, the light will turn off.

Note

The multimedia keys are for Win 8 and Win 10,for other systems, there may be no function for some combined keys.
 This equipment has been tested and found to comply with the limits for a Class B digital device, pursuant to part 15 of the FCC Rules. These limits are designed to provide reasonable protection against harmful interference in a residential installation. This equipment generates uses and can radiate radio frequency energy and, if not installed and used in accordance with the instructions, may cause harmful interference to radio communications. However, there is no guarantee that interference will not occur in a particular installation. If this equipment does cause harmful interference to radio or television reception, which can be determined by turning the equipment off and on, the user is encouraged to try to correct the interference by one or more of the following measures:
 -Reorient or relocate the receiving antenna.
 -Increase the separation between the equipment and receiver.
 -Connect the equipment into an outlet on a circuit different from that to which the receiver is connected.
 -Consult the dealer or an experienced radio/TV technician for help
 Changes or modifications not expressly approved by the party responsible for compliance could void the user's authority to operate the equipment.
 This device complies with Part 15 of the FCC Rules. Operation is subject to the following two conditions:
 (1)This device may not cause harmful interference
 (2)This device must accept any interference received, including interference that may cause undesired operation.