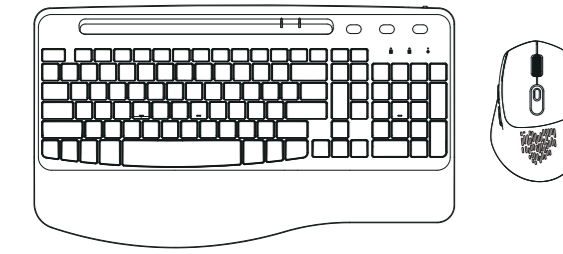


Wireless Keyboard and Mouse

INSTRUCTION MANUAL



the USB Receiver is inside the mouse

Thank you for choosing our keyboard and mouse! We always dedicates to bring great shopping experiences for each customers.We sincerely hope that you would be satisfied with our products and service.You satisfaction will be a great motivation for us.

Please feel free to contact us if you have any question.We are looking forward to hearing from you,and we expect to have a long-term cooperation with you.

Email: bgulong@yeah.net

ANY ISSUES ITLE AN EMAIL "ORDER ID + PROBLEM CONTENT"



Scan the QR code for activating your warranty or visit: www.bgulong.cn to know more.

Feel free to contact with bgulong@yeah.net if you meet with below issue:

- 1.Keyboard or mouse cannot be charged
- 2.Keys are hard to press/need to press hard?
- 3.Slow response and often need to wake up?
- 4.Typing response is sluggish/insensitive/lagging?
- 5.The letters on the keyboard are getting blurry/discoloring?
- 6.Intermittent work requires restart/frequent restart?
- 7.The scroll wheel of mouse are hard to scroll?
- 8.The mouse cursor is out of control or moving by itself?
- 9.Intermittent work requires restart/frequent restart?
- 10.The letters on the keyboard are getting blurry/ discoloring?

QA-Meet with problem? Wait, Find the answer here!

Q: Does not support MacBooks or USB C ports?

A: Please kindly noted there including a USB C to USB adapter which is compatible with MacBook most of the laptops, tablets and smartphones with a USB Type C port. Any issue kindly contact with bgulong@yeah.net

Q: How long does it take to enter sleep mode? Can I change this mode?

A: If it is idle for 10mins, the keyboard will enter sleep mode, if it is idle for 10mins, the mouse will enter sleep mode. This mode cannot be changed. Its purpose is to save power and extend the battery life. Simply press any button to wake it up.

Q:Can I use the keyboard and mouse while charging?

A:Yes, you can use the keyboard and mouse while plugged in and charging.Any issue kindly contact with bgulong@yeah.net

Q: It's not compatible with my computer.[Or it's not work with my computer totally?]

A: Our keyboard mouse comb compatible with windows,IOS, Mac, Google and most system.Please check you have plug in the wireless receiver. Kindly contact with bgulong@yeah.net, if don't work after checking,we will give you a free replacement.

Q:My hotkey functions don't work?

A: Please noted some hotkeys may not work with some system like IOS or Mac. But you can still type. If you couldn't accept, kindly contact with bgulong@yeah.net and we will solve for you.

Q: The keys and characters at the top cannot be used?

A: Some system like IOS or Mac may incompatible with the Multimedia function. But won't effect typing. If you couldn't accept, kindly contact with bgulong@yeah.net and we will solve for you.

Multimedia Hotkeys

The hotkeys need to be combined with **Fn** to achieve Quick Access functions.

Note: Some system like IOS or Mac may incompatible with the Multimedia function.

F1 Brightness -	F2 Brightness +	F3 Multitask
F4 Feedback Center	F5 Microphone	F6 Music
F7 PREV	F8 Pause/Start	F9 NEXT
F10 Mute	F11 Volume-	F12 Volume+
A Win	Brightness+ (Backlit)	Switch Backlit Color
S Switch to Mac system	Brightness- (Backlit)	Backlit Switch

Other function keys

Calculator	Email	Screen Lock

Indicator Function Instruction

①	②	③

①**Number Lock Indicator:** The Number Lock indicator will turn white when Number Lock is activated. When the backlight is turned on, the indicator will be turned off after no operation for 2 minutes.When the backlight is turned off, the indicator will be turned off after no operation for a few seconds.

②**CAPS Lock Indicator:** The CAPS Lock Indicator will turn white when CAPS Lock is activated. When the backlight is turned on, the indicator will be turned off after no operation for 2 minutes.When the backlight is turned off, the indicator will be turned off after no operation for a few seconds.

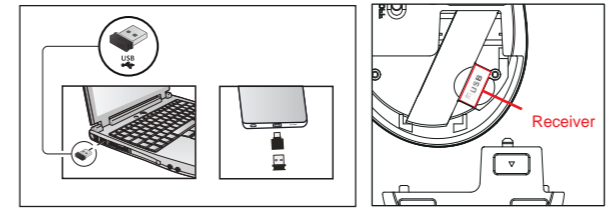
③**Power indicator:** Red light is on when charging, red light is off when full.Low battery warning: the light flashes slowly for a few seconds(one flash per second).

Mouse Instruction



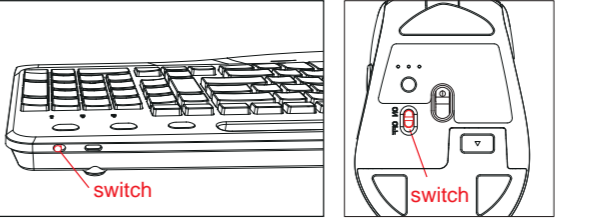
How to connect

Step1: Please make sure that the keyboard and mouse are fully charged. Please put the USB receiver into your computer, if your device includes Type-C port, you can also use the USB C-B Adapter.



Note: The USB receiver is stored on the back of the mouse. The keyboard and mouse share one receiver.

Step2: Slide the power switches separately to turn on the keyboard and mouse.



Step3: The keyboard and mouse will connect to the computer automatically and no drivers are required.

Troubleshooting----- Unable to connect the device

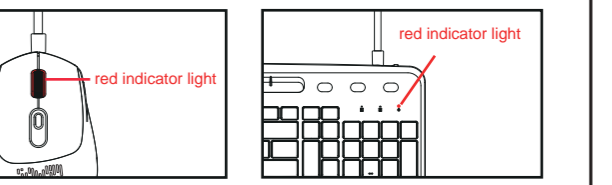
First, please fully charge the keyboard and mouse, unplug the receiver, restart the computer, and re-plug the receiver. if it can't be connected, please perform the following actions to fix it.

1.Keyboard can not be connected
Switch on the keyboard, press the "ESC"+"=" Put the keyboard at 30 cm from the receiver for pairing.Plug the 2.4GHz USB receiver into the computer within 10 seconds.When the connection indicator is off, the keyboard pairing succeeds.

2.Mouse can not be connected
Plug the receiver into the computer and turn on the mouse.Put the mouse at 30cm from the receiver for pairing.Press the left button & scroll wheel together for more than 2-3s it's successful.

Notice:
1.Do not expose this product to water. Prevent liquid from entering product.
When not used for a long time,it is recommended to turn off the power to prolong the battery life of the keyboard and mouse.

Instruction for charging



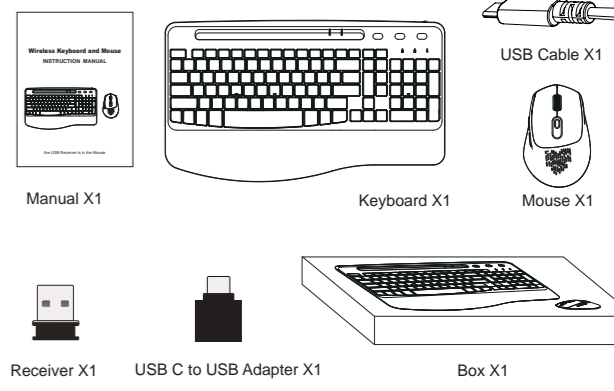
When the mouse is charging, the indicator light will light up. When fully charged, the indicator light will turn off.

When the keyboard is charging, the indicator light will light up. When fully charged, the indicator light will turn off.

Parameter

Mouse Parameter		Keyboard Parameter	
Size:	4.43*2.88*1.69 inches (11.5*7.3*4.3cm)	Size:	16.48*9.53*1.28 inches (41.88*24.19*3.24cm)
Mouse Interface:	1.5V battery AA	Connection:	Wireless 2.4G
Weight:	2.65oz (76g)	Operating Range:	<8meters
Key Life:	3 million times	Weight:	27.44oz (780g)
Resolution:	800/1200/1600	Keyboard Interface:	1.5V battery AA*2
Connection:	Wireless 2.4G	Material:	ABS+metal
Auto Sleep:	10mins	Key Life:	10 million times
		Auto Sleep:	10mins

WHAT WILL YOU RECEIVE



This device complies with part 15 of the FCC Rules. Operation is subject to the following two conditions: (1) This device may not cause harmful interference, and (2) this device must accept any interference received, including interference that may cause undesired operation.

Any Changes or modifications not expressly approved by the party responsible for compliance could void the user's authority to operate the equipment.

Note: This equipment has been tested and found to comply with the limits for a Class B digital device, pursuant to part 15 of the FCC Rules. These limits are designed to provide reasonable protection against harmful interference in a residential installation. This equipment generates uses and can radiate radio frequency energy and, if not installed and used in accordance with the instructions, may cause harmful interference to radio communications. However, there is no guarantee that interference will not occur in a particular installation. If this equipment does cause harmful interference to radio or television reception, which can be determined by turning the equipment off and on, the user is encouraged to try to correct the interference by one or more of the following measures:

- Reorient or relocate the receiving antenna.
- Increase the separation between the equipment and receiver.
- Connect the equipment into an outlet on a circuit different from that to which the receiver is connected.
- Consult the dealer or an experienced radio/TV technician for help.

FCC Radiation Exposure statement

The device has been evaluatec to meel general RF exposure requirement. The device can be used in porlable exposure condition without restriction.