

System Check_750MHz

DUT: D750V3-SN:1099

Communication System: UID 0, CW (0); Frequency: 750 MHz; Duty Cycle: 1:1

Medium: HSL_750_230512 Medium parameters used: $f = 750 \text{ MHz}$; $\sigma = 0.888 \text{ S/m}$; $\epsilon_r = 40.879$; $\rho = 1000 \text{ kg/m}^3$

Ambient Temperature : $23.5 \text{ }^\circ\text{C}$; Liquid Temperature : $22.6 \text{ }^\circ\text{C}$

DASY5 Configuration:

- Probe: EX3DV4 - SN7577; ConvF(9.79, 9.79, 9.79); Calibrated: 2022/11/23
- Sensor-Surface: 1.4mm (Mechanical Surface Detection)
- Electronics: DAE4 Sn1386; Calibrated: 2022/6/30
- Phantom: SAM with CRP v5.0(Front); Type: QD000P40CD; Serial: 1671
- Measurement SW: DASY52, Version 52.10 (3); SEMCAD X Version 14.6.13 (7474)

Pin=250mW/Area Scan (61x61x1): Interpolated grid: $dx=1.500 \text{ mm}$, $dy=1.500 \text{ mm}$

Maximum value of SAR (interpolated) = 1.77 W/kg

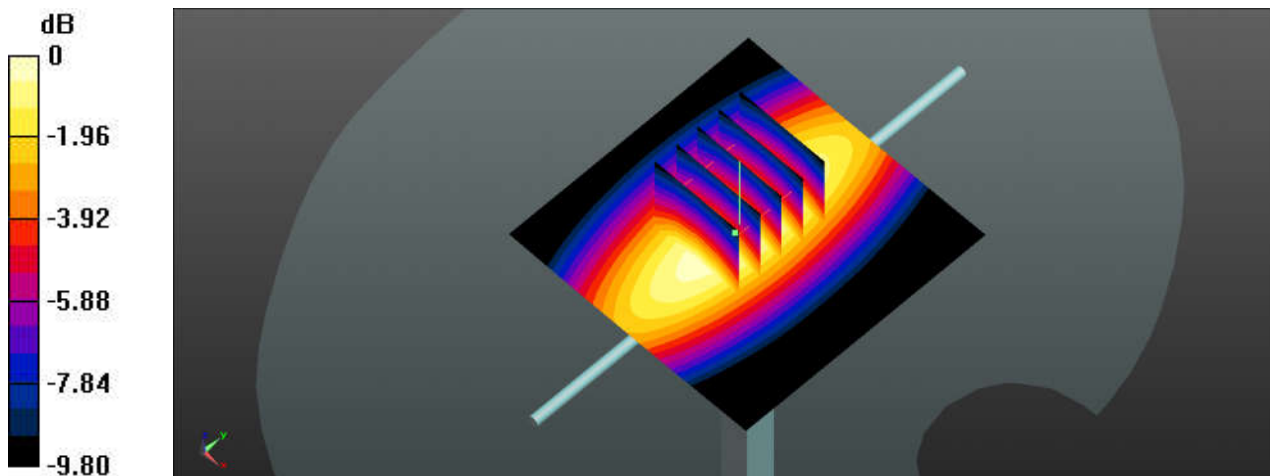
Pin=250mW/Zoom Scan (5x5x7)/Cube 0: Measurement grid: $dx=8\text{mm}$, $dy=8\text{mm}$, $dz=5\text{mm}$

Reference Value = 44.53 V/m ; Power Drift = 0.15 dB

Peak SAR (extrapolated) = 2.07 W/kg

SAR(1 g) = 2.03 W/kg ; SAR(10 g) = 1.33 W/kg

Maximum value of SAR (measured) = 1.78 W/kg



0 dB = 1.78 W/kg

System Check_750MHz

DUT: D750V3-SN:1099

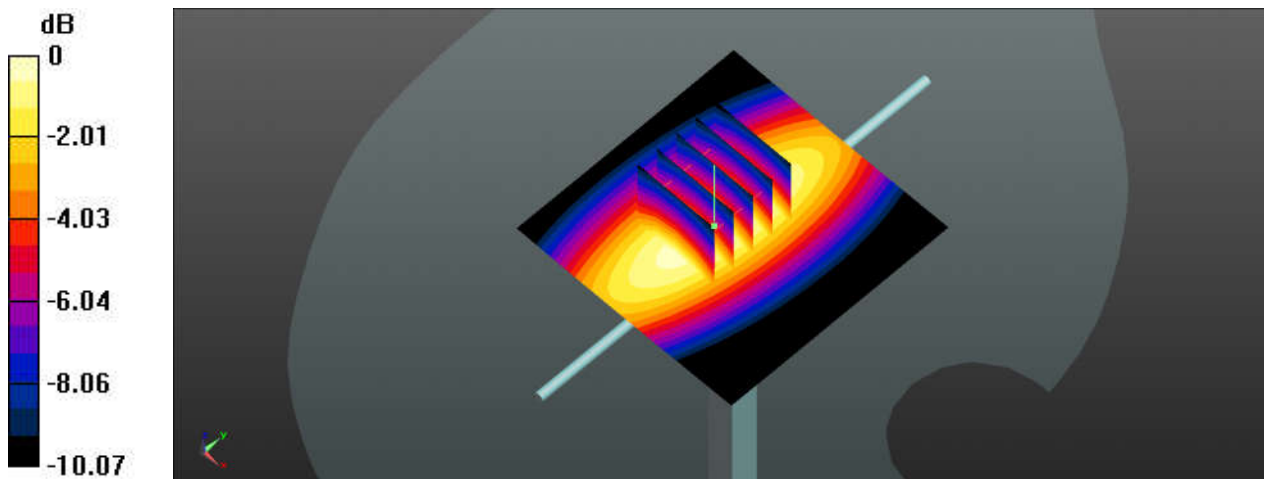
Communication System: UID 0, CW (0); Frequency: 750 MHz; Duty Cycle: 1:1
Medium: HSL_750_230515 Medium parameters used: $f = 750 \text{ MHz}$; $\sigma = 0.881 \text{ S/m}$; $\epsilon_r = 40.783$; $\rho = 1000 \text{ kg/m}^3$
Ambient Temperature : $23.4 \text{ }^\circ\text{C}$; Liquid Temperature : $22.4 \text{ }^\circ\text{C}$

DASY5 Configuration:

- Probe: EX3DV4 - SN7576; ConvF(10.72, 10.72, 10.72); Calibrated: 2022/7/28
- Sensor-Surface: 1.4mm (Mechanical Surface Detection)
- Electronics: DAE4 Sn1210; Calibrated: 2023/3/23
- Phantom: SAM with CRP v5.0(Front); Type: QD000P40CD; Serial: 1671
- Measurement SW: DASY52, Version 52.10 (3); SEMCAD X Version 14.6.13 (7474)

Pin=250mW/Area Scan (61x61x1): Interpolated grid: $dx=1.500 \text{ mm}$, $dy=1.500 \text{ mm}$
Maximum value of SAR (interpolated) = 3.00 W/kg

Pin=250mW/Zoom Scan (5x5x7)/Cube 0: Measurement grid: $dx=8\text{mm}$, $dy=8\text{mm}$, $dz=5\text{mm}$
Reference Value = 57.59 V/m ; Power Drift = 0.16 dB
Peak SAR (extrapolated) = 3.59 W/kg
SAR(1 g) = 2.13 W/kg ; SAR(10 g) = 1.42 W/kg
Maximum value of SAR (measured) = 3.03 W/kg



0 dB = 3.03 W/kg

System Check_835MHz

DUT: D835V2-SN:4d162

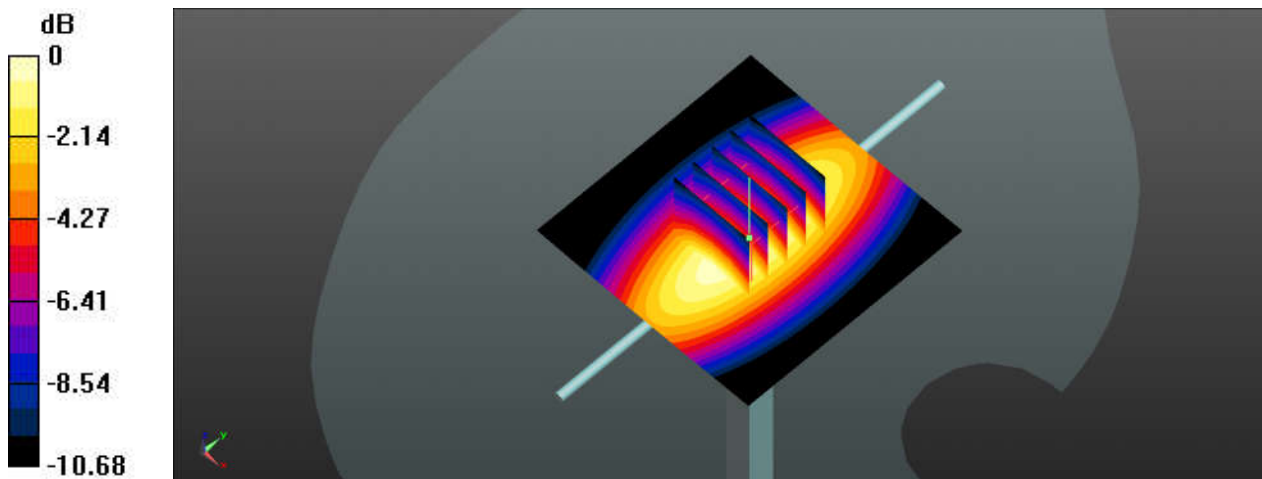
Communication System: UID 0, CW (0); Frequency: 835 MHz; Duty Cycle: 1:1
Medium: HSL_835_230514 Medium parameters used: $f = 835 \text{ MHz}$; $\sigma = 0.915 \text{ S/m}$; $\epsilon_r = 41.98$; $\rho = 1000 \text{ kg/m}^3$
Ambient Temperature : $23.3 \text{ }^\circ\text{C}$; Liquid Temperature : $22.5 \text{ }^\circ\text{C}$

DASY5 Configuration:

- Probe: EX3DV4 - SN7577; ConvF(9.53, 9.53, 9.53); Calibrated: 2022/11/23
- Sensor-Surface: 1.4mm (Mechanical Surface Detection)
- Electronics: DAE4 Sn1386; Calibrated: 2022/6/30
- Phantom: SAM with CRP v5.0(Front); Type: QD000P40CD; Serial: 1671
- Measurement SW: DASY52, Version 52.10 (3); SEMCAD X Version 14.6.13 (7474)

Pin=250mW/Area Scan (61x61x1): Interpolated grid: $dx=1.500 \text{ mm}$, $dy=1.500 \text{ mm}$
Maximum value of SAR (interpolated) = 3.52 W/kg

Pin=250mW/Zoom Scan (5x5x7)/Cube 0: Measurement grid: $dx=8\text{mm}$, $dy=8\text{mm}$, $dz=5\text{mm}$
Reference Value = 62.76 V/m ; Power Drift = -0.16 dB
Peak SAR (extrapolated) = 4.21 W/kg
SAR(1 g) = 2.45 W/kg ; SAR(10 g) = 1.61 W/kg
Maximum value of SAR (measured) = 3.52 W/kg



System Check_835MHz

DUT: D835V2-SN:4d162

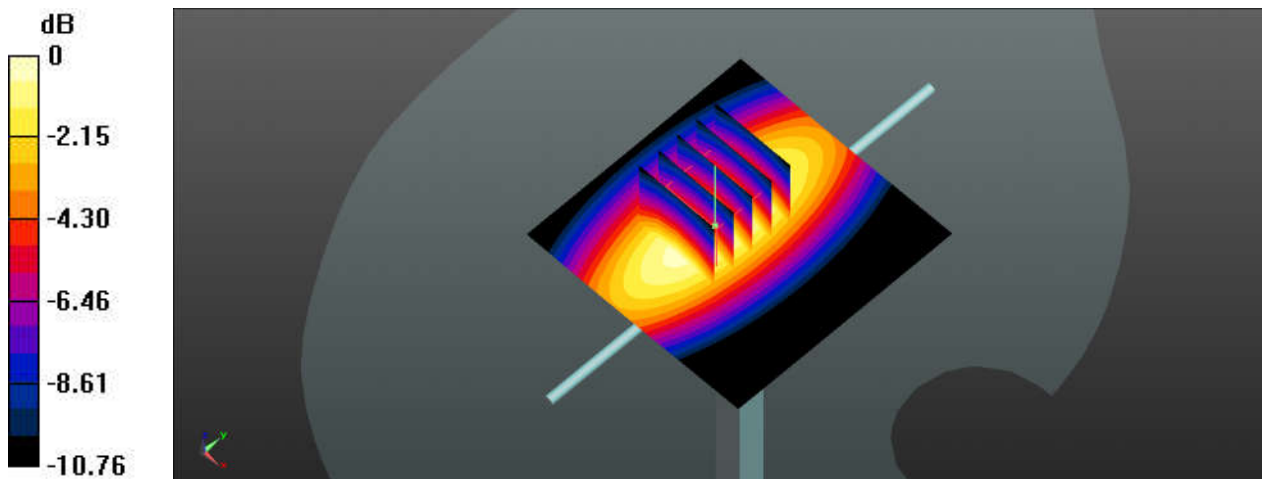
Communication System: UID 0, CW (0); Frequency: 835 MHz; Duty Cycle: 1:1
Medium: HSL_835_230516 Medium parameters used: $f = 835 \text{ MHz}$; $\sigma = 0.902 \text{ S/m}$; $\epsilon_r = 40.749$; $\rho = 1000 \text{ kg/m}^3$
Ambient Temperature : $23.4 \text{ }^\circ\text{C}$; Liquid Temperature : $22.4 \text{ }^\circ\text{C}$

DASY5 Configuration:

- Probe: EX3DV4 - SN7576; ConvF(10.47, 10.47, 10.47); Calibrated: 2022/7/28
- Sensor-Surface: 1.4mm (Mechanical Surface Detection)
- Electronics: DAE4 Sn1210; Calibrated: 2023/3/23
- Phantom: SAM with CRP v5.0(Front); Type: QD000P40CD; Serial: 1671
- Measurement SW: DASY52, Version 52.10 (3); SEMCAD X Version 14.6.13 (7474)

Pin=250mW/Area Scan (61x61x1): Interpolated grid: $dx=1.500 \text{ mm}$, $dy=1.500 \text{ mm}$
Maximum value of SAR (interpolated) = 3.50 W/kg

Pin=250mW/Zoom Scan (5x5x7)/Cube 0: Measurement grid: $dx=8\text{mm}$, $dy=8\text{mm}$, $dz=5\text{mm}$
Reference Value = 57.31 V/m ; Power Drift = 0.15 dB
Peak SAR (extrapolated) = 4.22 W/kg
SAR(1 g) = 2.58 W/kg ; SAR(10 g) = 1.64 W/kg
Maximum value of SAR (measured) = 3.54 W/kg



0 dB = 3.54 W/kg

System Check_1750MHz

DUT: D1750V2-SN:1137

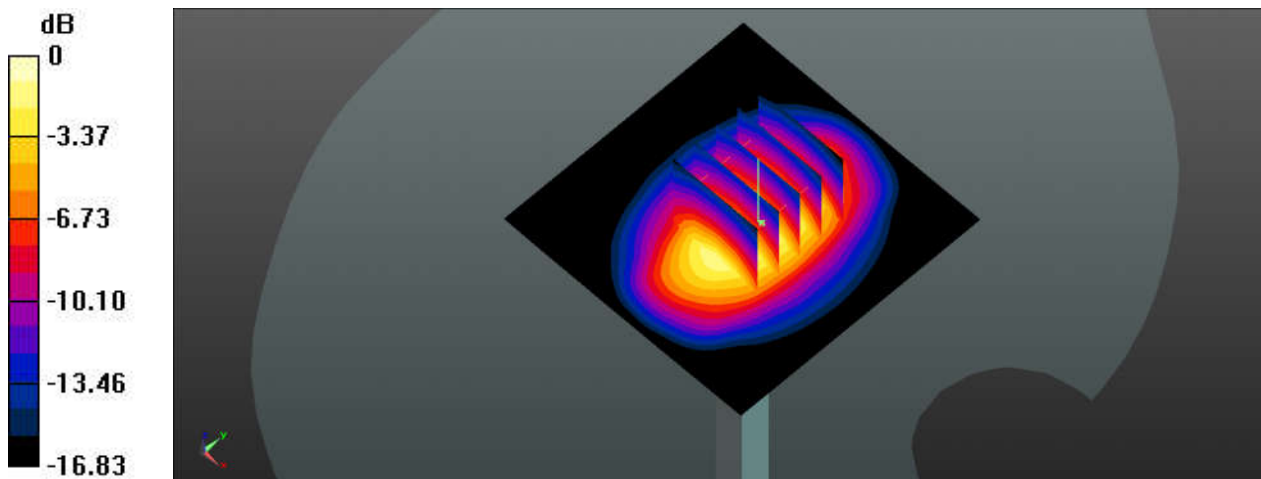
Communication System: UID 0, CW; Frequency: 1750 MHz; Duty Cycle: 1:1
Medium: HSL_1750_230515 Medium parameters used: $f = 1750$ MHz; $\sigma = 1.404$ S/m; $\epsilon_r = 40.106$;
 $\rho = 1000$ kg/m³
Ambient Temperature : 23.4 °C; Liquid Temperature : 22.5 °C

DASY5 Configuration:

- Probe: EX3DV4 - SN7577; ConvF(8.46, 8.46, 8.46); Calibrated: 2022/11/23
- Sensor-Surface: 1.4mm (Mechanical Surface Detection)
- Electronics: DAE4 Sn1386; Calibrated: 2022/6/30
- Phantom: SAM with CRP v5.0(Front); Type: QD000P40CD; Serial: 1671
- Measurement SW: DASY52, Version 52.10 (3); SEMCAD X Version 14.6.13 (7474)

Pin=250mW/Area Scan (61x61x1): Interpolated grid: dx=1.500 mm, dy=1.500 mm
Maximum value of SAR (interpolated) = 9.12 W/kg

Pin=250mW/Zoom Scan (5x5x7)/Cube 0: Measurement grid: dx=8mm, dy=8mm, dz=5mm
Reference Value = 77.68 V/m; Power Drift = -0.09 dB
Peak SAR (extrapolated) = 11.5 W/kg
SAR(1 g) = 8.46 W/kg; SAR(10 g) = 4.48 W/kg
Maximum value of SAR (measured) = 9.16 W/kg



0 dB = 9.16 W/kg

System Check_1750MHz

DUT: D1750V2-SN:1137

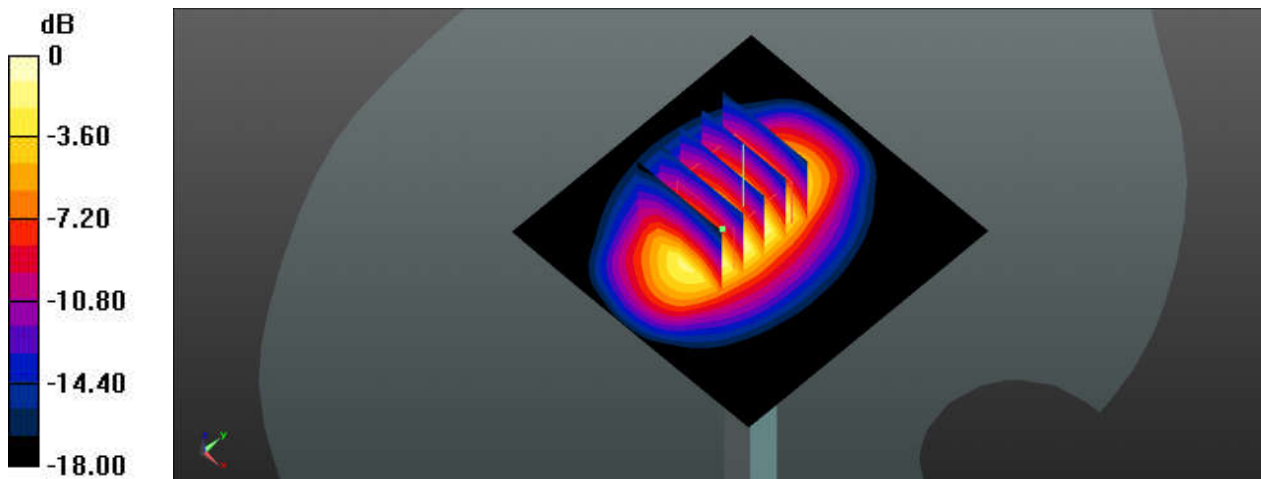
Communication System: UID 0, CW; Frequency: 1750 MHz; Duty Cycle: 1:1
Medium: HSL_1750_230517 Medium parameters used: $f = 1750$ MHz; $\sigma = 1.36$ S/m; $\epsilon_r = 38.143$; $\rho = 1000$ kg/m³
Ambient Temperature : 23.6 °C; Liquid Temperature : 22.7 °C

DASY5 Configuration:

- Probe: EX3DV4 - SN7576; ConvF(8.98, 8.98, 8.98); Calibrated: 2022/7/28
- Sensor-Surface: 1.4mm (Mechanical Surface Detection)
- Electronics: DAE4 Sn1210; Calibrated: 2023/3/23
- Phantom: SAM with CRP v5.0(Front); Type: QD000P40CD; Serial: 1671
- Measurement SW: DASY52, Version 52.10 (3); SEMCAD X Version 14.6.13 (7474)

Pin=250mW/Area Scan (61x61x1): Interpolated grid: dx=1.500 mm, dy=1.500 mm
Maximum value of SAR (interpolated) = 8.28 W/kg

Pin=250mW/Zoom Scan (5x5x7)/Cube 0: Measurement grid: dx=8mm, dy=8mm, dz=5mm
Reference Value = 72.51 V/m; Power Drift = 0.03 dB
Peak SAR (extrapolated) = 10.3 W/kg
SAR(1 g) = 8.62 W/kg; SAR(10 g) = 4.96 W/kg
Maximum value of SAR (measured) = 7.77 W/kg



0 dB = 7.77 W/kg

System Check_1900MHz

DUT: D1900V2-SN:5d182

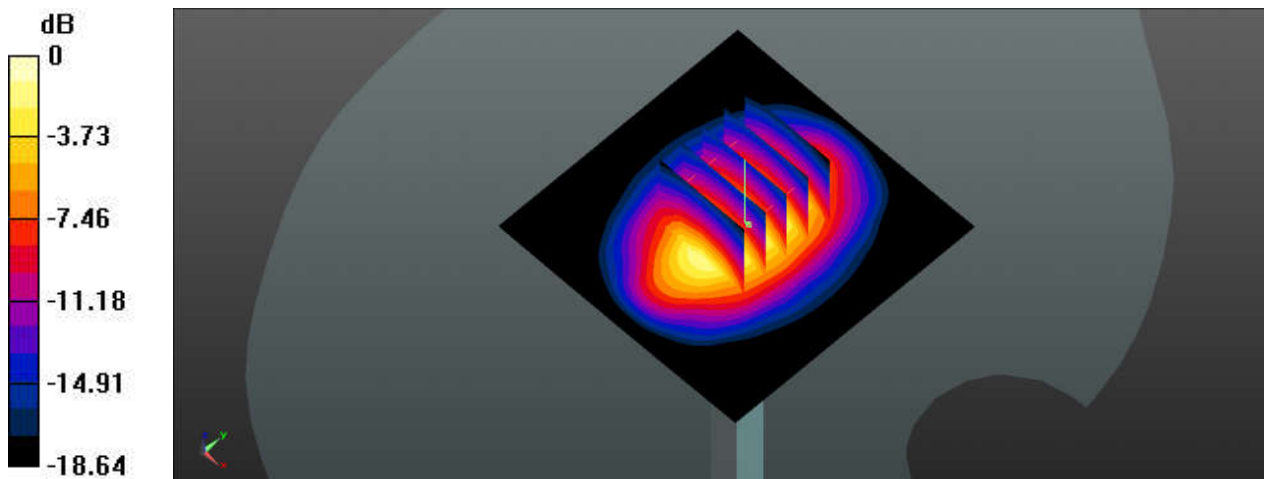
Communication System: UID 0, CW; Frequency: 1900 MHz; Duty Cycle: 1:1
Medium: HSL_1900_230516 Medium parameters used: $f = 1900$ MHz; $\sigma = 1.44$ S/m; $\epsilon_r = 39.914$; $\rho = 1000$ kg/m³
Ambient Temperature : 23.2 °C; Liquid Temperature : 22.5 °C

DASY5 Configuration:

- Probe: EX3DV4 - SN7577; ConvF(8.19, 8.19, 8.19); Calibrated: 2022/11/23
- Sensor-Surface: 1.4mm (Mechanical Surface Detection)
- Electronics: DAE4 Sn1386; Calibrated: 2022/6/30
- Phantom: SAM with CRP v5.0(Front); Type: QD000P40CD; Serial: 1671
- Measurement SW: DASY52, Version 52.10 (3); SEMCAD X Version 14.6.13 (7474)

Pin=250mW/Area Scan (61x61x1): Interpolated grid: dx=1.500 mm, dy=1.500 mm
Maximum value of SAR (interpolated) = 11.7 W/kg

Pin=250mW/Zoom Scan (5x5x7)/Cube 0: Measurement grid: dx=8mm, dy=8mm, dz=5mm
Reference Value = 91.13 V/m; Power Drift = -0.19 dB
Peak SAR (extrapolated) = 15.2 W/kg
SAR(1 g) = 9.36 W/kg; SAR(10 g) = 5.21 W/kg
Maximum value of SAR (measured) = 11.8 W/kg



0 dB = 11.8 W/kg

System Check_1900MHz

DUT: D1900V2-SN:5d182

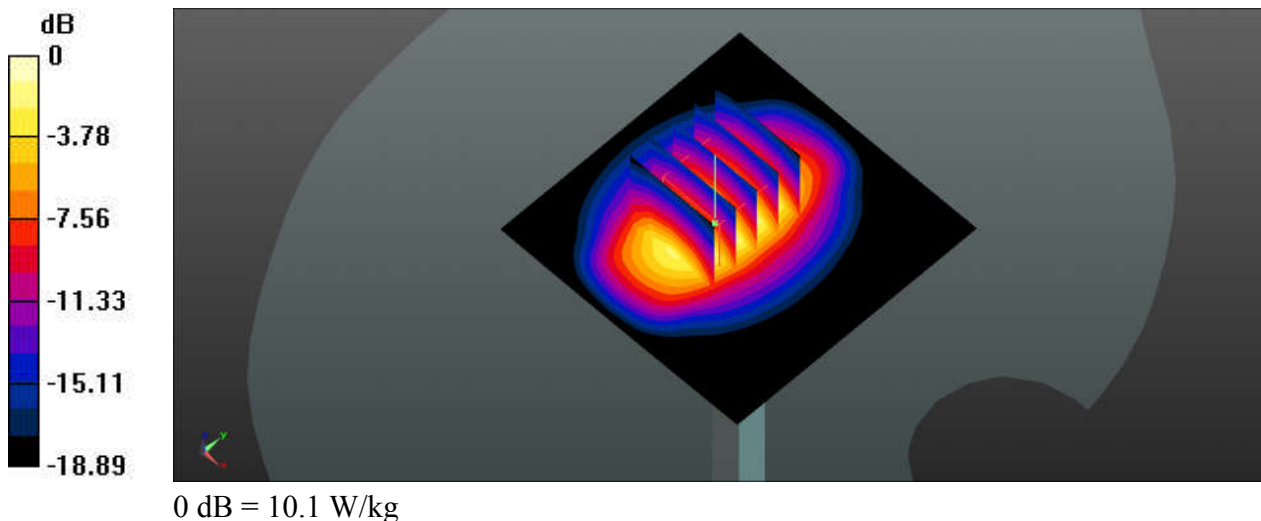
Communication System: UID 0, CW; Frequency: 1900 MHz; Duty Cycle: 1:1
Medium: HSL_1900_230518 Medium parameters used: $f = 1900$ MHz; $\sigma = 1.407$ S/m; $\epsilon_r = 39.644$;
 $\rho = 1000$ kg/m³
Ambient Temperature : 23.5 °C; Liquid Temperature : 22.4 °C

DASY5 Configuration:

- Probe: EX3DV4 - SN7576; ConvF(8.55, 8.55, 8.55); Calibrated: 2022/7/28
- Sensor-Surface: 1.4mm (Mechanical Surface Detection)
- Electronics: DAE4 Sn1210; Calibrated: 2023/3/23
- Phantom: SAM with CRP v5.0(Front); Type: QD000P40CD; Serial: 1671
- Measurement SW: DASY52, Version 52.10 (3); SEMCAD X Version 14.6.13 (7474)

Pin=250mW/Area Scan (61x61x1): Interpolated grid: dx=1.500 mm, dy=1.500 mm
Maximum value of SAR (interpolated) = 9.87 W/kg

Pin=250mW/Zoom Scan (5x5x7)/Cube 0: Measurement grid: dx=8mm, dy=8mm, dz=5mm
Reference Value = 69.02 V/m; Power Drift = 0.04 dB
Peak SAR (extrapolated) = 13.1 W/kg
SAR(1 g) = 9.59 W/kg; SAR(10 g) = 5.5 W/kg
Maximum value of SAR (measured) = 10.1 W/kg



System Check_2300MHz

DUT: D2300V2-SN:1056

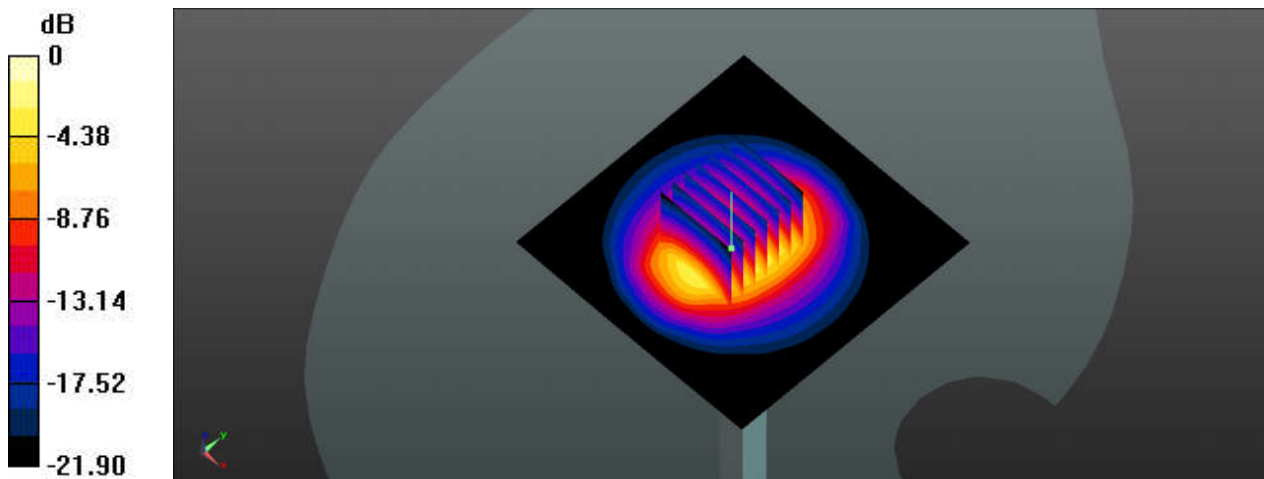
Communication System: UID 0, CW (0); Frequency: 2300 MHz; Duty Cycle: 1:1
Medium: HSL_2300_230514 Medium parameters used: $f = 2300$ MHz; $\sigma = 1.71$ S/m; $\epsilon_r = 37.893$; $\rho = 1000$ kg/m³
Ambient Temperature : 23.2 °C; Liquid Temperature : 22.3 °C

DASY5 Configuration:

- Probe: ES3DV3 - SN3191; ConvF(5.01, 4.58, 4.9); Calibrated: 2023/2/17
- Sensor-Surface: 3mm (Mechanical Surface Detection)
- Electronics: DAE4 Sn679; Calibrated: 2022/6/6
- Phantom: SAM with CRP v5.0(Front); Type: QD000P40CD; Serial: 1671
- Measurement SW: DASY52, Version 52.10 (3); SEMCAD X Version 14.6.13 (7474)

Pin=250mW/Area Scan (81x81x1): Interpolated grid: dx=1.200 mm, dy=1.200 mm
Maximum value of SAR (interpolated) = 16.9 W/kg

Pin=250mW/Zoom Scan (7x7x7)/Cube 0: Measurement grid: dx=5mm, dy=5mm, dz=5mm
Reference Value = 101.3 V/m; Power Drift = -0.09 dB
Peak SAR (extrapolated) = 26.1 W/kg
SAR(1 g) = 12.5 W/kg; SAR(10 g) = 5.89 W/kg
Maximum value of SAR (measured) = 16.4 W/kg



0 dB = 16.4 W/kg

System Check_2300MHz

DUT: D2300V2-SN:1056

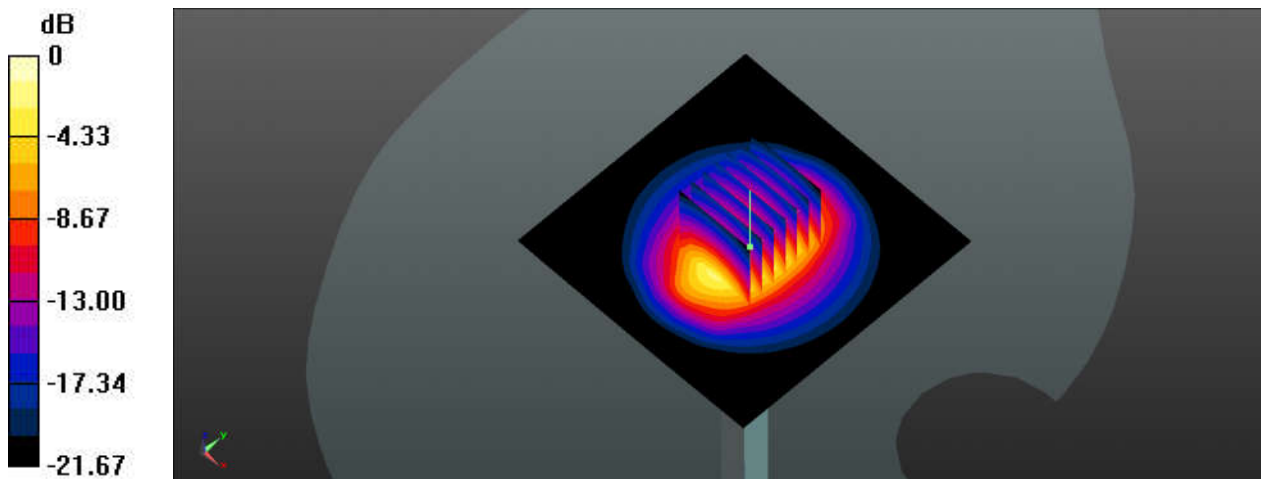
Communication System: UID 0, CW (0); Frequency: 2300 MHz;Duty Cycle: 1:1
Medium: HSL_2300_230519 Medium parameters used: $f = 2300$ MHz; $\sigma = 1.715$ S/m; $\epsilon_r = 39.371$;
 $\rho = 1000$ kg/m³
Ambient Temperature : 23.4 °C; Liquid Temperature : 22.4 °C

DASY5 Configuration:

- Probe: ES3DV3 - SN3191; ConvF(5.01, 4.58, 4.9); Calibrated: 2023/2/17
- Sensor-Surface: 3mm (Mechanical Surface Detection)
- Electronics: DAE4 Sn679; Calibrated: 2022/6/6
- Phantom: SAM with CRP v5.0(Front); Type: QD000P40CD; Serial: 1671
- Measurement SW: DASY52, Version 52.10 (3); SEMCAD X Version 14.6.13 (7474)

Pin=250mW/Area Scan (81x81x1): Interpolated grid: dx=1.200 mm, dy=1.200 mm
Maximum value of SAR (interpolated) = 21.8 W/kg

Pin=250mW/Zoom Scan (7x7x7)/Cube 0: Measurement grid: dx=5mm, dy=5mm, dz=5mm
Reference Value = 115.8 V/m; Power Drift = -0.19 dB
Peak SAR (extrapolated) = 27.5 W/kg
SAR(1 g) = 13.1 W/kg; SAR(10 g) = 6.14 W/kg
Maximum value of SAR (measured) = 22.2 W/kg



0 dB = 22.2 W/kg

System Check_2450MHz

DUT: D2450V2-SN:924

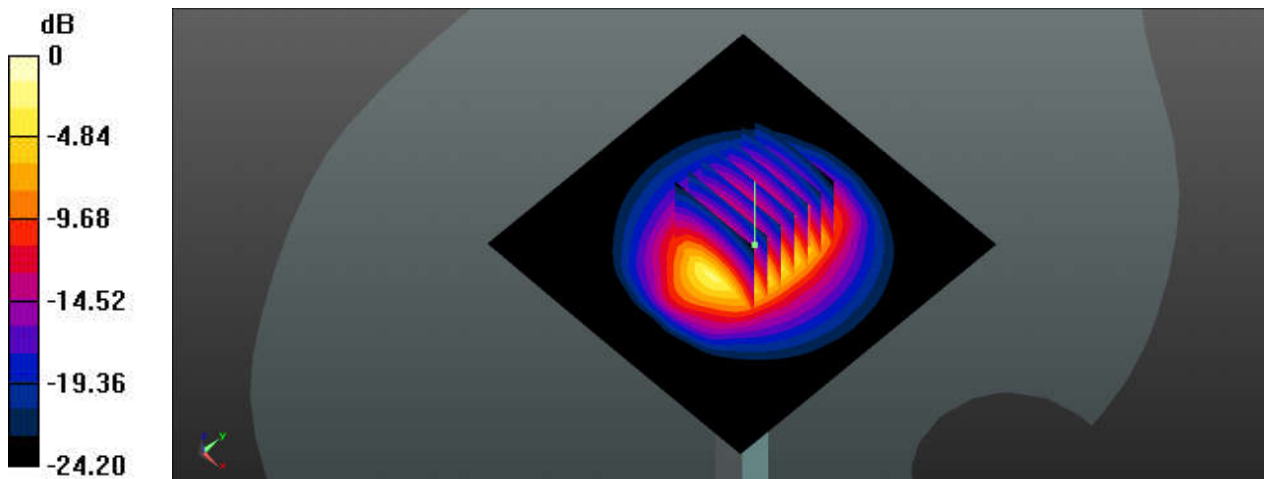
Communication System: UID 0, CW; Frequency: 2450 MHz; Duty Cycle: 1:1
Medium: HSL_2450_230515 Medium parameters used: $f = 2450$ MHz; $\sigma = 1.85$ S/m; $\epsilon_r = 38.466$; $\rho = 1000$ kg/m³
Ambient Temperature : 23.3 °C; Liquid Temperature : 22.4 °C

DASY5 Configuration:

- Probe: EX3DV4 - SN7576; ConvF(7.88, 7.88, 7.88); Calibrated: 2022/7/28
- Sensor-Surface: 1.4mm (Mechanical Surface Detection)
- Electronics: DAE4 Sn1210; Calibrated: 2023/3/23
- Phantom: SAM with CRP v5.0(Front); Type: QD000P40CD; Serial: 1671
- Measurement SW: DASY52, Version 52.10 (3); SEMCAD X Version 14.6.13 (7474)

Pin=250mW/Area Scan (81x81x1): Interpolated grid: dx=1.200 mm, dy=1.200 mm
Maximum value of SAR (interpolated) = 19.1 W/kg

Pin=250mW/Zoom Scan (7x7x7)/Cube 0: Measurement grid: dx=5mm, dy=5mm, dz=5mm
Reference Value = 77.51 V/m; Power Drift = 0.14 dB
Peak SAR (extrapolated) = 26.0 W/kg
SAR(1 g) = 12.1 W/kg; SAR(10 g) = 5.48 W/kg
Maximum value of SAR (measured) = 18.9 W/kg



0 dB = 18.9 W/kg

System Check_2450MHz

DUT: D2450V2-SN:924

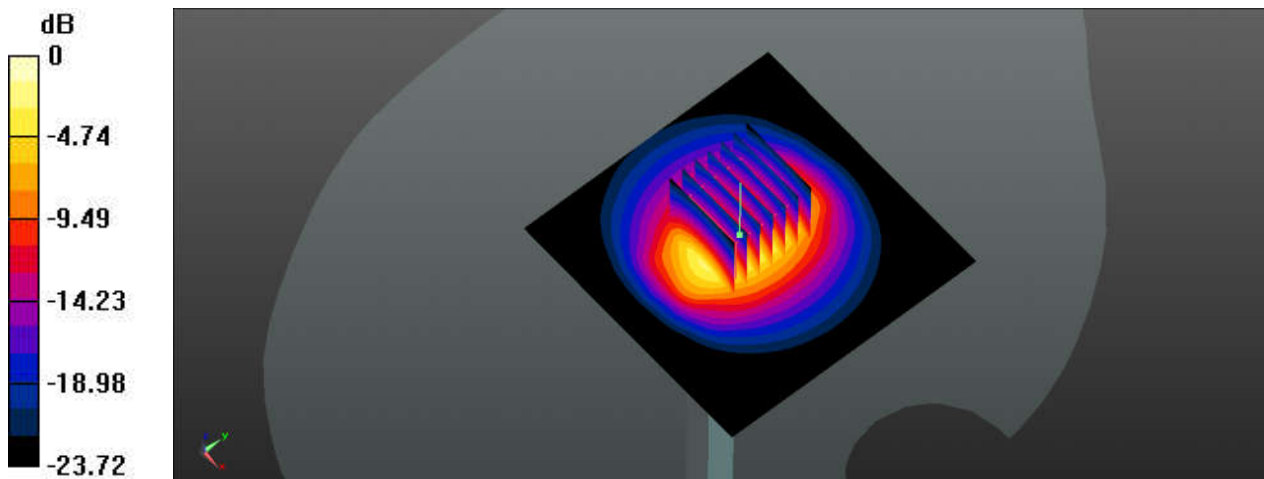
Communication System: UID 0, CW; Frequency: 2450 MHz; Duty Cycle: 1:1
Medium: HSL_2450_230520 Medium parameters used: $f = 2450$ MHz; $\sigma = 1.84$ S/m; $\epsilon_r = 38.467$; $\rho = 1000$ kg/m³
Ambient Temperature : 23.2 °C; Liquid Temperature : 22.1 °C

DASY5 Configuration:

- Probe: EX3DV4 - SN7576; ConvF(7.88, 7.88, 7.88); Calibrated: 2022/7/28
- Sensor-Surface: 1.4mm (Mechanical Surface Detection)
- Electronics: DAE4 Sn1210; Calibrated: 2023/3/23
- Phantom: SAM with CRP v5.0(Front); Type: QD000P40CD; Serial: 1671
- Measurement SW: DASY52, Version 52.10 (3); SEMCAD X Version 14.6.13 (7474)

Pin=250mW/Area Scan (81x81x1): Interpolated grid: dx=1.200 mm, dy=1.200 mm
Maximum value of SAR (interpolated) = 21.7 W/kg

Pin=250mW/Zoom Scan (7x7x7)/Cube 0: Measurement grid: dx=5mm, dy=5mm, dz=5mm
Reference Value = 102.1 V/m; Power Drift = 0.19 dB
Peak SAR (extrapolated) = 27.9 W/kg
SAR(1 g) = 12.9 W/kg; SAR(10 g) = 5.84 W/kg
Maximum value of SAR (measured) = 22.3 W/kg



0 dB = 22.3 W/kg