

SAFETY NOTE

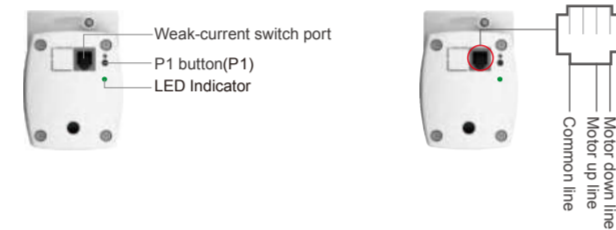
1. This appliance can be used by children aged from 8 years and above and persons with reduced physical, sensory or mental capabilities or lack of experience and knowledge if they have been given supervision or instruction concerning use of the appliance in a safe way and understand the hazards involved.
2. Children shall not play with the appliance.
3. Cleaning and user maintenance shall not be made by children without supervision.
4. If the supply cord is damaged, it must be replaced by the manufacturer, its service agent or similarly qualified persons in order to avoid a hazard.
5. **WARNING:** the drive shall be disconnected from its power source during cleaning, maintenance and when replacing parts.
6. The instructions shall state that the A-weighted emission sound pressure level of the drive is equal to or less than 70 dB(A), e.g. by writing $LpA \leq 70$ dB(A).
7. The mass and the dimension of the driven part shall be compatible with the rated torque and rated operating time.
8. The type of driven part the drive is intended for.
9. **WARNING:** Important safety instructions. It is important for the safety of persons to follow these instructions. Save these instructions.
10. Do not allow children to play with fixed controls. Keep remote controls away from children.
11. Frequently examine the installation for imbalance and signs of wear or damage to cables and springs. Do not use if repair or adjustment is necessary.
12. Watch the moving shutter and keep people away until the shutter is completely closed.
13. **WARNING:** Important safety instructions. Follow all instructions, since incorrect installation can lead to severe injury.
14. Before installing the drive, remove any unnecessary cords and disable any equipment not needed for powered operation.



DT82TN/NA-1.2 Instruction | A-01



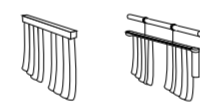
Product Introduction



Features

- Built-in Receiver
- Stall Protection
- Preferred Stop Position
- Reset To Factory Mode
- Switch Direction
- Run/Stop By Pulling Fabric
- Weak-current Switch Selection Function
- Electronic Limit
- Manually Set The Open And Close Limits

Fields of Application



It's for motorized curtain track and motorized lift curtain track.

Specifications

| | |
|-------------------------------------------|------------------------------|
| Working Temperature: -10°C ~ +55°C | Radio Frequency: 433.925MHz |
| Input Voltage: AC 100V-240V / 50Hz - 60Hz | Max. Running Time: 4 minutes |

Following data for reference

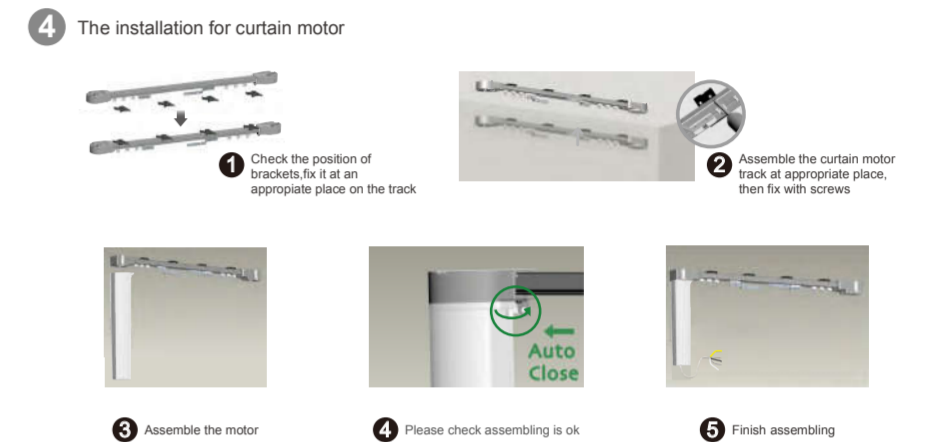
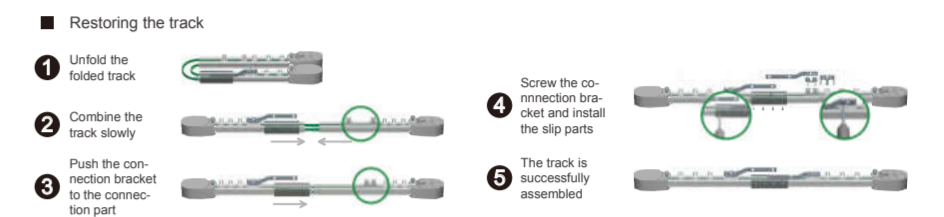
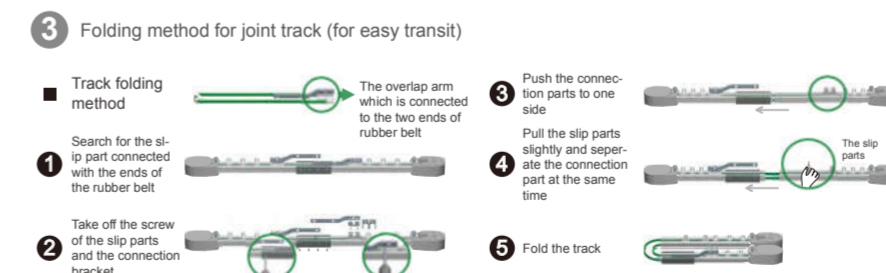
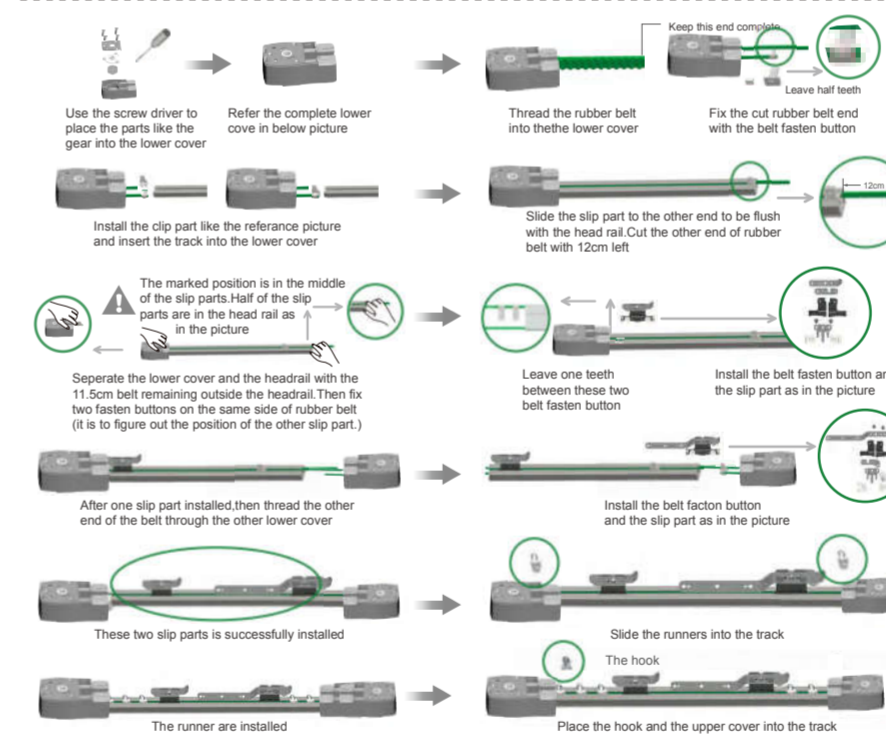
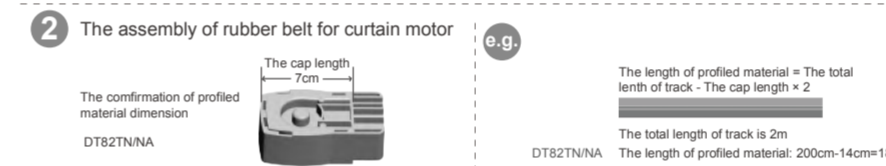
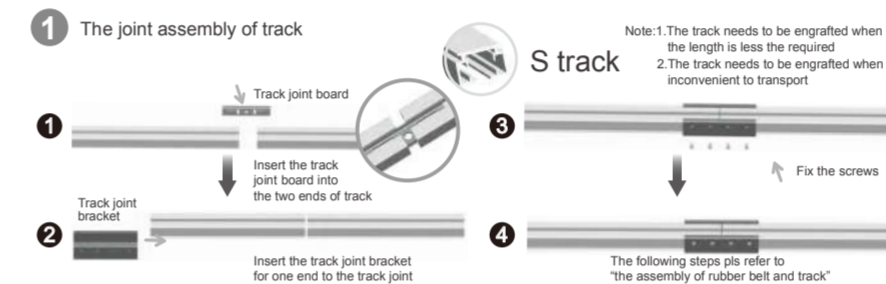
| Model | Rated Torque (N.m) | Open/close Speed (cm/s) |
|------------------|--------------------|-------------------------|
| DT82TN/NA-1.2/14 | 1.2 | 14 |

* For reference only.

Caution

1. Do not expose motor to humid or extreme temperature conditions.
2. Do not cut the antenna and keep it clear from metal objects.
3. Do not allow children to play with this device.
4. If power cable or connector is damaged, do not use.
5. Ensure power cable and aerial is clear and protected from moving parts.
6. Cable routed through walls shall be properly isolated.
7. Before installation, remove unnecessary cords and disable equipment not needed for powered operation.
8. Installation and programming to be performed by a qualified professional, use or modification outside the scope of this instruction may void warranty.

Motor Installation



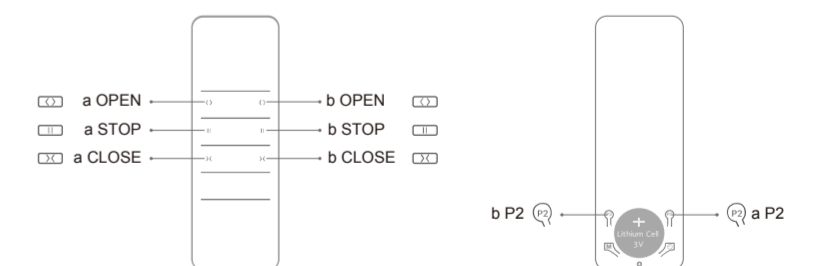
Important Safety Instructions To Be Read Prior To Operation.

Setting Notice

Please read following points of attention carefully before setting.

1. Operation:
 - ①The valid interval time of the buttons is within 10S, if there is no operation within 10S, the emitter will exit the present setting.
 - ②The motor will LED flashes for hint, please do the next step after the hint.
2. Limits setting:
 - ①After the curtain motor installation, pls set the limit switch before usage;
 - ②After setting the limit switches, the motor is with the memorized setting function, pls open and close curtain one time to recover the limits after re-power on;
 - ③After replacing the track or the curtains, pls cancel the limit switches then resetting again.
3. If lost the emitters, pls repair the new emitters.

Button Instructions





Essential Settings

Step 1 to 3 must be completed to ensure proper operation.

1 Pairing



Press and hold P1 button for 2S (1 flash), release button, press P2 (1 flash), press P2 again (5 flashes), the motor has been paired successfully.

2 Switch Rotating Direction (Optional)

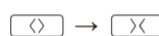
Press OPEN and motor is closed, try below to switch direction.



Press and hold P1 button for 5S (2 flashes), release button, press P1 button for 2S (5 flashes), the direction has been switched successfully.

* The limit switches will be canceled after switching direction, pls reset the limit switches.

3 Setting Limits



Press OPEN once, the curtain will open until stop against obstacle, then press CLOSE once, the curtain will close until stop against obstacle, the limit has been set successfully.

4 Manually Set The Open And Close Limit

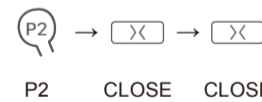
1 Manually set the open limit



Check limits are set. Operate the product to desired open limit position. Press P2 (1 flash), press OPEN (1 flash), OPEN again (5 flashes), the manually set the open limit has been set successfully.

• Repeat the same process to cancel the new open limit.

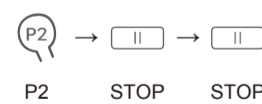
2 Manually set the close limit



Check limits are set. Operate the product to desired close limit position. Press P2 (1 flash), press CLOSE (1 flash), CLOSE again (5 flashes), the manually set the close limit has been set successfully.

• Repeat the same process to cancel the new close limit.

5 Add / Delete Preferred Position



Check limits are set. Operate the product to desired preferred position. Press P2 (1 flash), press STOP (1 flash), STOP again (5 flashes), the preferred position is set.

• Repeat the same process to delete the preferred position.

* Press STOP for 2S, the motor moves to preferred position automatically.

6 Run/Stop By Pulling Fabric

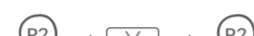


Press and hold P1 button for 5S (2 flashes), release button, press STOP (5 flashes), disable the run/stop by pulling fabric.

• Repeat this operation to enable the run/stop by pulling fabric.

* The factory default Run/Stop by pulling fabric is enabled.

7 Remove All Limits



Press P2 (1 flash), STOP (1 flash), and P2 (5 flashes), all limits are removed, the manually set the open and close limit and preferred position will also be deleted.

8 Weak-current Switch Modes

1 Dual button pushbutton switch mode(Factory default)



Press and hold P1 button for 5S (2 flashes), release button, press P2 button once (1 flash), then press P1 button for 2S (5 flashes), the mode has been successfully switched.

2 Dual button interlock switch mode



Press and hold P1 button for 5S (2 flashes), release button, press P2 button twice (2 flashes), then press P1 button for 2S (5 flashes), the mode has been successfully switched.

3 Triple button pushbutton switch mode(DC246)



Press and hold P1 button for 5S (2 flashes), release button, press P2 button 3 times (3 flashes), then press P1 button for 2S (5 flashes), the mode has been successfully switched.

4 Single button pushbutton switch mode



Press and hold P1 button for 5S (2 flashes), release button, press P2 button 4 times (4 flashes), then press P1 button for 2S (5 flashes), the mode has been successfully switched.

9 Reset To Factory Mode



Press and hold P1 button for 10S (5 flashes), release button, the factory settings are restored successfully, all user settings are cleared and the motor is restored to the default status.

Quick Index

| Settings | Steps |
|-----------------------------------------|----------------------------------------------------------------------------------------------------------|
| 1 Pairing | P1 (hold down 2S) → P2 → P2 |
| 2 Switch Rotating Direction | P1 (hold down 5S) → P1 (hold down 2S) |
| 3 Setting Limits | Open → Close |
| 4 Manually Set The Open And Close Limit | 1 Manually set the open limit P2 → Open → Open |
| | 1 Manually set the close limit P2 → Close → Close |
| 5 Add / Delete Preferred Position | P2 → Stop → Stop |
| 6 Run/Stop By Pulling Fabric | P1 (hold down 5S) → Stop |
| 7 Remove All Limits | P2 → Close → P2 |
| 8 Weak-current Switch Modes | 1 Dual button pushbutton switch mode P1 (hold down 5S) → P2 (press once) → P1 (hold down 2S) |
| | 2 Dual button interlock switch mode P1 (hold down 5S) → P2 (press twice) → P1 (hold down 2S) |
| | 3 Triple button pushbutton switch mode(DC246) P1 (hold down 5S) → P2 (press 3 times) → P1 (hold down 2S) |
| | 4 Single button pushbutton switch mode P1 (hold down 5S) → P2 (press 4 times) → P1 (hold down 2S) |
| 9 Reset To Factory Mode | P1 (hold down 10S) |

Troubleshooting

| Issues | Solution |
|---------------------------------------|-----------------------------------------------------------------------------------------------------------------------------------|
| Motor does not work | Check power |
| Emitter cannot be controlled | Replace the emitter battery |
| Emitter operation reversed | Perform switch rotating direction operation |
| External switch reverse | Replace the wire sequence of the switch |
| The curtains can't close together | a. Check if the direction of the emitter and switch are reversed, if reversed, please perform Switch Rotating Direction operation |
| | b. Delete limit position and reset set limit position itinerary |
| Curtains always hit or go to the side | Delete limit position and reset set limit position and boundary |
| Hand pull curtains will get stuck | Set limit position and boundary |
| The motor against obstacle not stop | Check the fixing screws on the upper and lower covers of the track |

Caution:

This device complies with Part 15 of the FCC. Operation is subject to the following two conditions: (1) this device may not cause harmful interference, and (2) this device must accept any interference received, including interference that may cause undesired operation.

Any changes or modifications not expressly approved by the party responsible for compliance could void the user's authority to operate the equipment.

This equipment has been tested and found to comply with the limits for a Class B digital device, pursuant to part 15 of the FCC Rules. These limits are designed to provide reasonable protection against harmful interference in a residential installation. This equipment generates uses and can radiate radio frequency energy and, if not installed and used in accordance with the instructions, may cause harmful interference to radio communications. However, there is no guarantee that interference will not occur in a particular installation. If this equipment does cause harmful interference to radio or television reception, which can be determined by turning the equipment off and on, the user is encouraged to try to correct the interference by one or more of the following measures:

- Reorient or relocate the receiving antenna.
- Increase the separation between the equipment and receiver.
- Connect the equipment into an outlet on a circuit different from that to which the receiver is connected.
- Consult the dealer or an experienced radio/TV technician for help.