

System Check_H2450

DUT: Dipole 2450 MHz; Type:D2450V2; SN:927

Communication System: CW; Frequency: 2450 MHz;Duty Cycle: 1:1

Medium: H2450 Medium parameters used: $f = 2450$ MHz; $\sigma = 1.79$ S/m; $\epsilon_r = 40.12$; $\rho = 1000$ kg/m³

Ambient Temperature : 24.2 °C; Liquid Temperature : 24.0 °C

DASY5 Configuration:

- Probe: EX3DV4 - SN3970; Calibrated: 2024/6/25;
- Electronics: DAE4 Sn1418; Calibrated: 2024/5/17
- Phantom: ELI v5.0; Type: QDOVA002AA; Serial: TP:1231
- Measurement SW: DASY52, Version 52.8 (7); SEMCAD X Version 14.6.10 (7164)

Pin=250mW/Area Scan (41x51x1): Interpolated grid: dx=2.000 mm, dy=2.000 mm

Maximum value of SAR (interpolated) = 25.0 W/kg

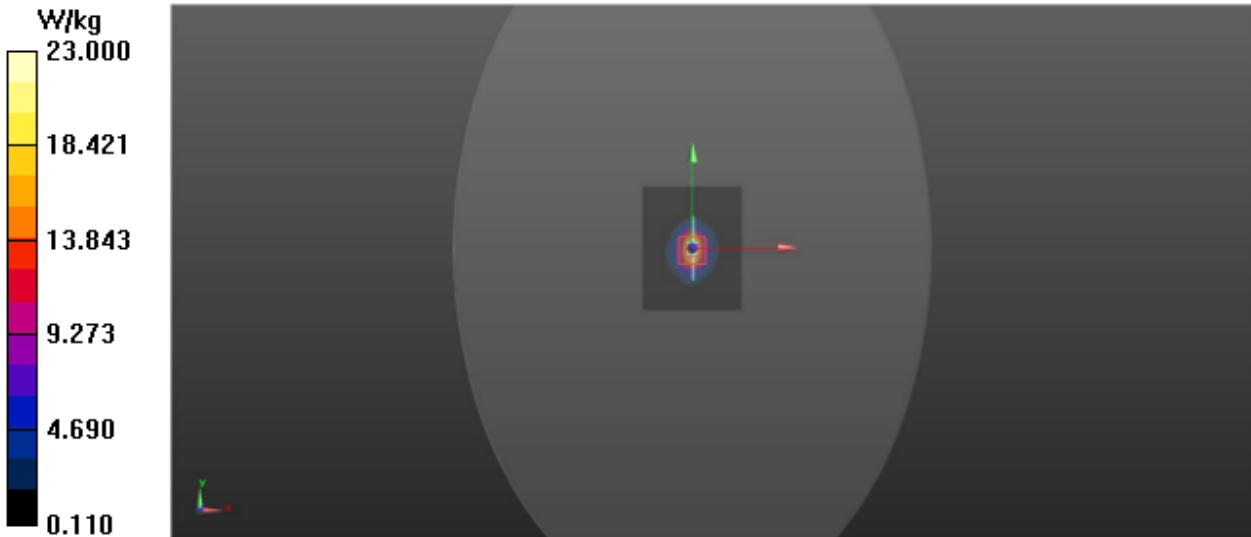
Pin=250mW/Zoom Scan (5x5x7)/Cube 0: Measurement grid: dx=5mm, dy=5mm, dz=5mm

Reference Value = 115.3 V/m; Power Drift = 0.17 dB

Peak SAR (extrapolated) = 31.0 W/kg

SAR(1 g) = 13.09 W/kg; SAR(10 g) = 6.12 W/kg

Maximum value of SAR (measured) = 23.0 W/kg



System Check_H5250

DUT: Dipole 5GHzV2;Type:D5GHzV2; SN:1169

Communication System: CW; Frequency: 5250 MHz;Duty Cycle: 1:1

Medium: H5G Medium parameters used: $f = 5250$ MHz; $\sigma = 4.76$ S/m; $\epsilon_r = 36.88$; $\rho = 1000$ kg/m³

Ambient Temperature : 23.9 °C; Liquid Temperature : 23.7 °C

DASY5 Configuration:

- Probe: EX3DV4 - SN3970; Calibrated: 2024/6/25;
- Electronics: DAE4 Sn1418; Calibrated: 2024/5/17
- Phantom: ELI v5.0; Type: QDOVA002AA; Serial: TP:1231
- Measurement SW: DASY52, Version 52.8 (7); SEMCAD X Version 14.6.10 (7164)

Pin=100mW/Area Scan (91x91x1): Interpolated grid: dx=1.000 mm, dy=1.000 mm

Maximum value of SAR (interpolated) = 22.0 W/kg

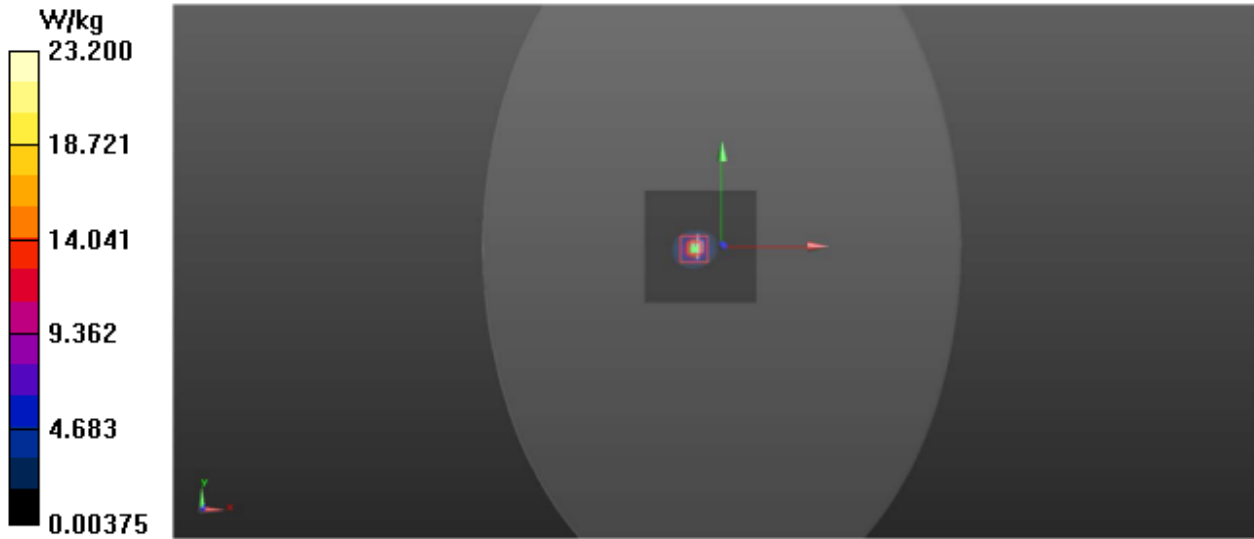
Pin=100mW/Zoom Scan(7x7x12)/Cube 0: Measurement grid: dx=4mm, dy=4mm, dz=2mm Reference Value

= 57.053 V/m; Power Drift = 0.19 dB

Peak SAR (extrapolated) = 37.9 W/kg

SAR(1 g) = 7.62 W/kg; SAR(10 g) = 2.13 W/kg

Maximum value of SAR (measured) = 23.3 W/kg



System Check_H5750

DUT: Dipole 5GHzV2;Type:D5GHzV2; SN:1040

Communication System: CW; Frequency: 5750 MHz;Duty Cycle: 1:1

Medium: H5G Medium parameters used: $f = 5750$ MHz; $\sigma = 5.22$ S/m; $\epsilon_r = 35.61$; $\rho = 1000$ kg/m³

Ambient Temperature : 23.5 °C; Liquid Temperature : 23.3 °C

DASY5 Configuration:

- Probe: EX3DV4 - SN3970; Calibrated: 2024/6/25;

- Electronics: DAE4 Sn1418; Calibrated: 2024/5/17

- Phantom: ELI v5.0; Type: QDOVA002AA; Serial: TP:1231

- Measurement SW: DASY52, Version 52.8 (7); SEMCAD X Version 14.6.10 (7164)

Pin=100mW/Area Scan (91x91x1): Interpolated grid: dx=1.000 mm, dy=1.000 mm

Maximum value of SAR (interpolated) = 20.1 W/kg

Pin=100mW/Zoom Scan (7x7x5)/Cube 0: Measurement grid: dx=4mm, dy=4mm, dz=2mm

Reference Value = 50.659 V/m; Power Drift = 0.13 dB

Peak SAR (extrapolated) = 35.0 W/kg

SAR(1 g) = 7.61 W/kg; SAR(10 g) = 2.11 W/kg

Maximum value of SAR (measured) = 21.1 W/kg

