



Shenzhen DBT Telecommunication Technology CO.,LTD

Antenna Testing Report

Client:REESTAR INTERNATIONAL LIMITED

Company Address : No. 85 Minke East Road, Minying Science
& Technology Park, Shiqi, Zhongshan, Guangdong,China

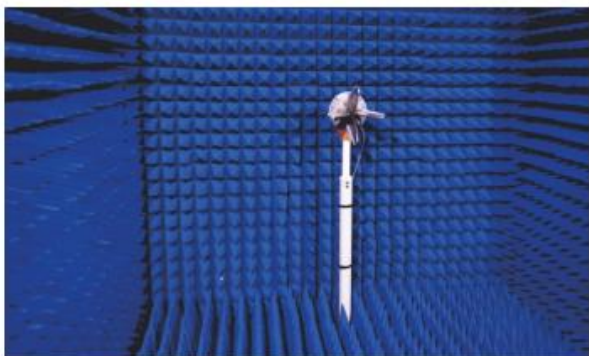
Project : FG2320ULB

Antenna standard : BT

Antenna type:PCB Antenna

RF : 王志锋
TEL: 13823540870
TIME: 2019/11/09

1. Test Equipment

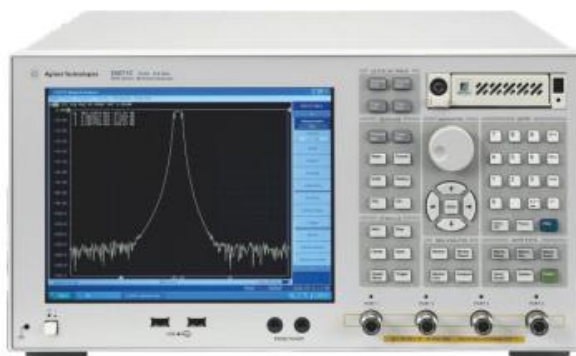


OTA-800

Brand : ETS ✓

Frequency range : 370MHz-8.5GHz

Features : passive、 active test ; G net、 C net、 2G/3G/4G , WIFI and BT , TRP、 TIS test.



5071C

Brand : Agilent ✓

Frequency range : 9KHz-8.5GHz

Features : 2G/3G/4G/BT/WIFI antenna comprehensive passive test.



8960

Brand : Agilent

Frequency range : 292MHz-2700GHz

Features : 2G/3G active test.



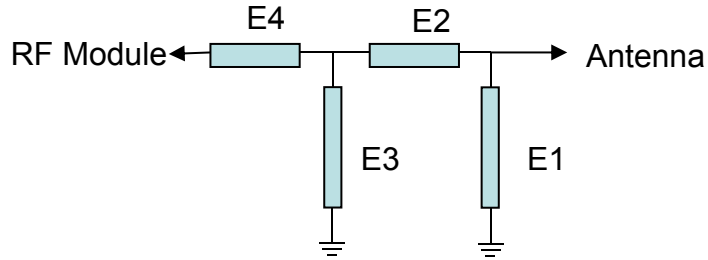
CMW500

Brand : Rohde & Schwarz

Frequency range : 70KHz-6GHz

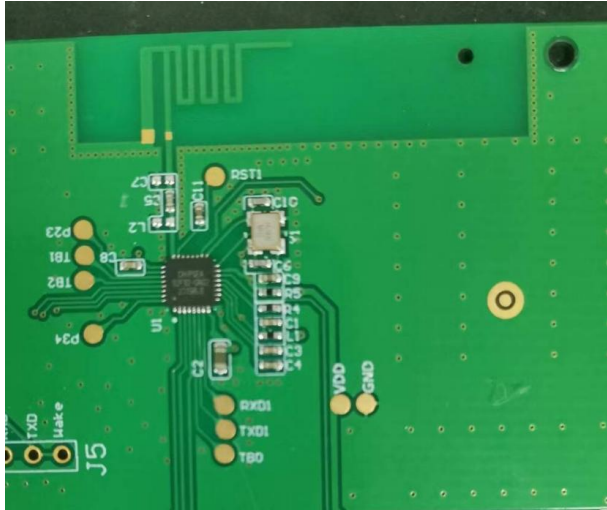
Features : 2G/3G/4G/BT/WIFI/NB-Lot antenna comprehensive passive test.

2. Matching circuit

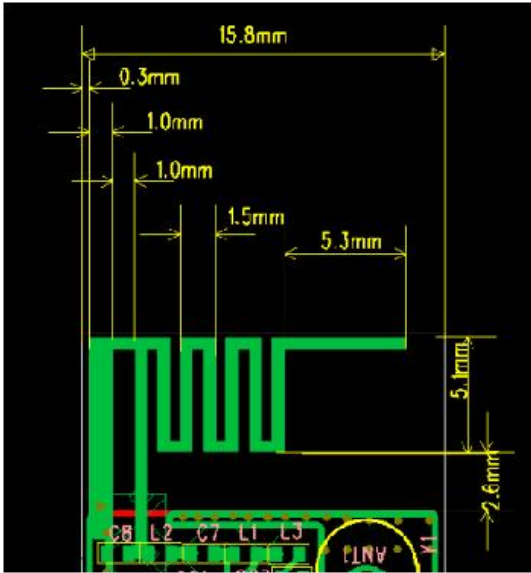


Element	MAIN	GPS/WIFI /BT	AUX
E1(0402)			
E2(0402)	1.5pF		
E3(0402)	N/A		
E4(0402)	0Ω		

3. Antenna assembly position



antenna position



antenna position

4. Electrical Parameter



Electrical Parameter	
Frequency Range (MHz)	2400~2500
VSWR	≤7.0
Input Impedance(Ω)	50
Gain(dBi)	0.89
Polarization($^{\circ}$)	vertical
Max power(W)	10
Antenna Type	Monopole
Working Temperature($^{\circ}\text{C}$)	-40~+80

5. Antenna Passive Data

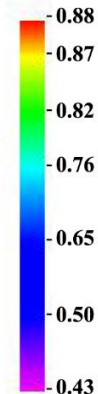
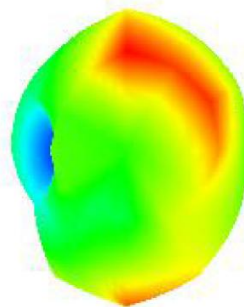


6. Antenna Gain/Efficiency/3D Apple Chart

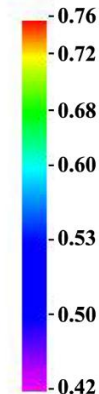
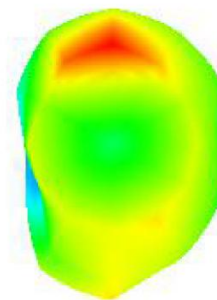


Freq (MHz)	Effi (%)	Gain (dBi)
2400	1.6	0.89
2410	1.36	0.87
2420	1.77	0.86
2430	1.45	0.85
2440	1.42	0.79
2450	1.18	0.78
2460	1.63	0.77
2470	1.01	0.76
2480	1	0.69
2490	0.73	0.61
2500	1.42	0.67

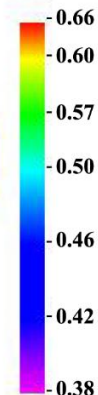
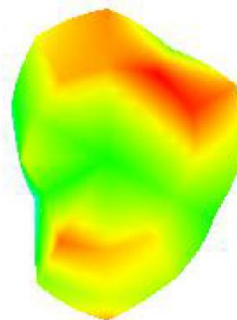
2400.000MHz



2450.000MHz



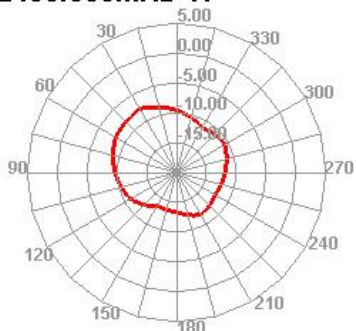
2500.000MHz



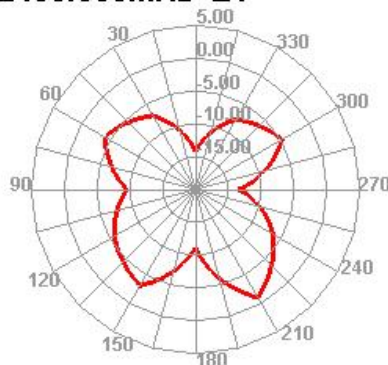
7. Antenna Direction Map



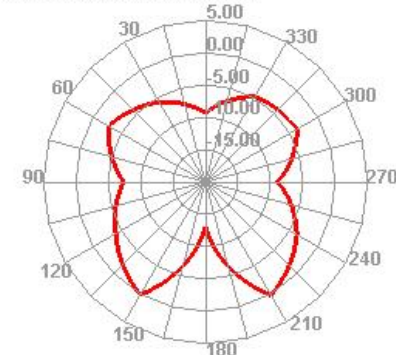
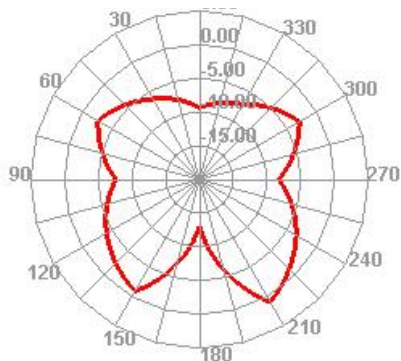
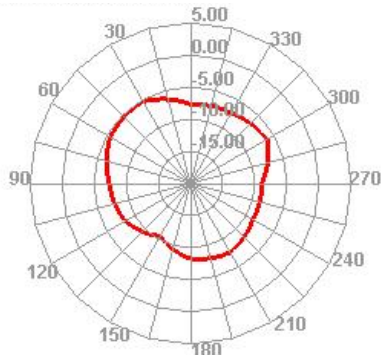
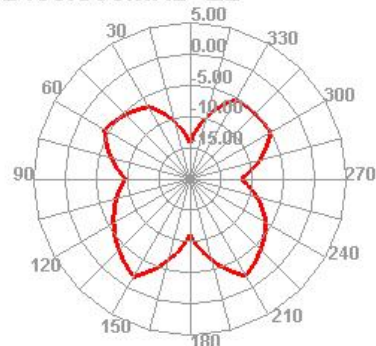
2400.000MHz H



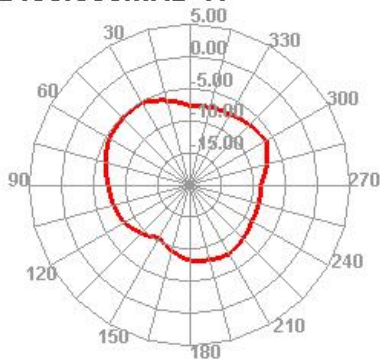
2400.000MHz E1



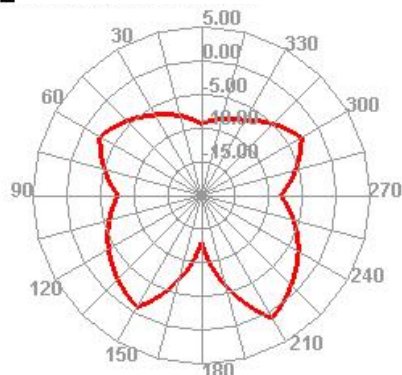
2400.000MHz E2



2450.000MHz H



2



2450.000MHz E2

