

RENPHO

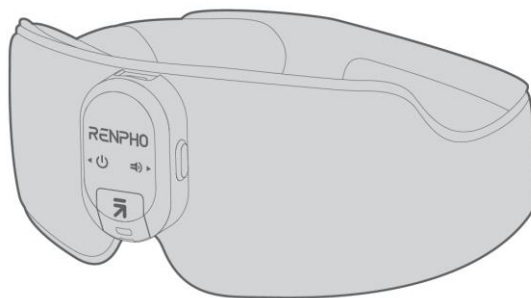
SMART HEALTHY LIVING

NA1

Made in China

RENPHO

SMART HEALTHY LIVING



Model: R-GS003
EyeSnooze Aroma

User Manual

IMPORTANT SAFETY INSTRUCTIONS

READ ALL INSTRUCTIONS CAREFULLY BEFORE USE.

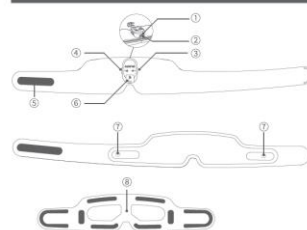
1. This device is intended for household use only and not for medical or commercial purposes.
2. Children over 8 and persons with reduced physical, sensory or cognitive capabilities should only use the device under supervision and after receiving instructions on safe use.
3. Do not use the device if you have any skin allergies or sensitivities. If any irritation or discomfort occurs during use, discontinue immediately and consult a healthcare professional.
4. Avoid placing excessive pressure on the device or pulling it forcefully, as this may damage the device.
5. Do not use the device with wet hands.
6. Do not submerge the device in water or any other liquids. Clean it only as instructed in the user manual.
7. Do not use if any part of the device is damaged.
8. Children should not play with the device. Cleaning and user maintenance should not be done by children.
9. Keep the aromatherapy tablets out of reach of children to prevent accidental ingestion.
10. Use heated surfaces carefully, as they may cause serious burns. Do not use over insensitive skin areas or on persons with poor circulation. Children or incapacitated persons should not use heat unattended.
11. Temperatures sufficiently high to cause burns may occur regardless of the control setting. Do not use the device on infants, invalids, or sleeping or unconscious persons. Check frequently where skin is in contact with the heated area to reduce the risk of blistering.

SAVE THESE INSTRUCTIONS

WHAT'S INCLUDED

- | | |
|--|-----------------|
| EyeSnooze Aroma x 1 | Storage Bag x 1 |
| Charging Cable x 1 | User Manual x 1 |
| Fragrance-Free Aromatherapy Tablet x 2 | Quick Guide x 1 |

PRODUCT OVERVIEW



1. Indicator
2. Charging Port
3. Volume / Silent Mode / Music Button
4. Power / Heat / Timer Button
5. Velcro Strap
6. Aroma Compartment
7. Adjustable Speakers
8. Detachable Inner Pad

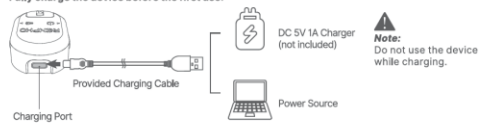
EN-01

Indicator

Status	Indicator
Device turned on / Bluetooth disconnected	Turns solid white
Bluetooth connected	Turns solid blue
Low battery / Charging	Flashes red slowly
Fully charged	Turns solid red
Charging at a voltage higher than 5V	Keeps flashing red quickly for 1min and then goes out, indicating an improper charger is used

CHARGING YOUR EYESNOOZE AROMA

Fully charge the device before the first use.



EN-02

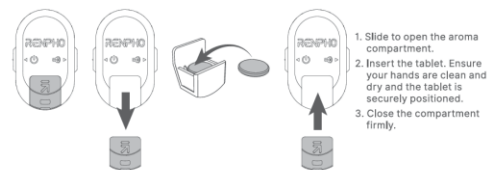
Note:

1. When the device is in low battery, the indicator flashes red slowly, accompanied by a voice prompt "Low power, please charge".
2. It takes about 2.5 hours to fully charge the device. Once charging is complete, the indicator will be solid red.

INSERTING THE AROMATHERAPY TABLET

Tip:

As the provided aromatherapy tablet is fragrance-free, before inserting, add a few drops of essential oil or perfume to the tablet and wipe off any excess liquid from the tablet after 1 minute. Do not mix different fragrances on the same tablet.



WEARING YOUR EYESNOOZE AROMA

1. Remove any eye accessories (e.g., eyeglasses, false eyelashes, etc.) before wearing.



2. Position the device over eyes and fasten the Velcro strap.



3. Adjust the speakers on both sides to fit ears.



4. Adjust the device for a proper fit and maximum coverage.

OPERATING YOUR EYESNOOZE AROMA

Power / Heat / Timer Button

1. Press and hold to power on/off.
2. Press to adjust the temperature: high heat (118°F)/no temperature/low heat (107°F)/medium heat (113°C).
3. Double press to select the timer: 15mins/30mins/60mins/no timer.

Volume / Silent Mode / Music Button

1. Press to cycle the music volume through level 3/4/5/0/1/2.
2. Double press to switch between voice mode and silent mode.
3. Press and hold to switch to the next track, including built-in music tracks and Bluetooth music.

Note:

1. After power on, high heat, 15mins timer, built-in music 1 and Bluetooth will be enabled by default, and the indicator turns white.
2. Once the silent mode is activated, the voice broadcast and built-in music will be disabled. The music playing from your mobile device will be paused but can be resumed through your mobile device.

CONNECTING TO BLUETOOTH

1. Turn on the device and enable Bluetooth on your mobile device.
2. Search for "R-GS003" via your Bluetooth settings and connect it to play your music playlist through the device.

Note:

Once paired successfully, the device will be automatically connected to Bluetooth each time turned on, followed by a voice prompt "Bluetooth connected".

EN-03

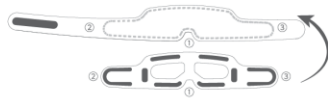
DETACHING & ATTACHING THE INNER PAD

1. Detaching



Locate the attachment points and gently pull off.

2. Attaching



Note:

Ensure the inner pad is completely dry before attaching.

CARE & MAINTENANCE

1. Turn off the device and allow it to cool down before cleaning or storing.
2. Wipe the device surface with a soft cotton cloth slightly dampened with mild detergent. Do not rinse the device. Do not use bleach, corrosive cleaners, or other harsh detergents.
3. Gently detach the inner pad from the device and hand wash using a neutral detergent in cold water.
4. Store the device in a cool, dry place. Avoid exposing it to direct sunlight, moisture, heat, and corrosive gases.
5. If the device has not been used for over 3 months, charge it from time to time to prolong its lifespan.
6. Do not disassemble or repair the device by yourself as this may cause damage and void the manufacturer's warranty.

TROUBLESHOOTING GUIDE

Problem	Possible Cause	Solution
Power-on failure	Out of battery	Charge the device
	Short press the Power button	Long press the Power button to turn on the device

EN-04

Problem	Possible Cause	Solution
Charging failure	Use other types of charging cables	Use the provided charging cable only
	Use a charger with a voltage higher than 5V	Use a DC 5V 1A charger (not included)
Bluetooth connection failure	Bluetooth on the mobile device is not enabled	Enable Bluetooth on your mobile device and connect to "R-GS003"
	The device is connected to another mobile device	Ensure the device is fully disconnected from another mobile device
The sound of music is faint	The device is off	Turn on the device and connect to Bluetooth
	Low volume level is selected	Adjust the volume level
No music	The built-in speakers are far away from your ears	Adjust the position of speakers on both sides left or right as needed
	Silent mode is selected	Press the Music button to switch to voice mode
No music	Bluetooth music is playing at no volume level	Adjust the volume level through your mobile device

EN-05

Problem	Possible Cause	Solution
No/low heat	No temperature/low heat is selected	Press the Power button to adjust the heat level
	The device needs time to warm up	Wait for 1min after power on
	Built-in overheat protection	It is normal. The device will automatically restart after cooling down
Fail to insert the aromatherapy tablet	Incorrect tablet placement	Follow the instruction
	Use incompatible-sized aromatherapy tablets	Use the aromatherapy tablets provided by RENPHO only
No fragrance or weak fragrance	The fragrance of the added essential oil or perfume is subtle	Add the essential oil or perfume with a strong fragrance
	No essential oil or perfume is added to the aromatherapy tablet	Add some essential oil or perfume you preferred to the provided fragrance-free aromatherapy tablet
	The fragrance of the aromatherapy tablet has dissipated	Replenish the aromatherapy tablet with essential oil or perfume timely
If you encounter any other problems, please contact our customer service.		

SPECIFICATIONS

Product Name: Sleep Mask
Model: R-GS003
Input: 5V=1A
Rated Power: 5W
Battery Capacity: 1000mAh

WARRANTY POLICY

Your RENPHO product purchase is covered by a one-year limited manufacturer warranty from the date of delivery.

For warranty terms and conditions, please visit:
<https://renpho.com/pages/warranty-terms-and-conditions>

Note:

Product registration is not required for the warranty.
If you choose not to register your product, it will not void the product warranty.

CUSTOMER SERVICE

Please feel free to contact us if you have any questions or concerns. RENPHO Customer Service Team guarantees a quick response and hassle-free solutions to any issue you may have within business hours.

TEL: +1(844) 417 0149 (US ONLY)
Monday-Friday 9:00AM-4:30PM
1800 MY RENPHO (1800 69 7367) (AU ONLY)
Monday-Friday 9:00AM-6:00PM (AEST)
Email: support@renpho.com (US/CA)
support-au@renpho.com (AU)

*For defective products or the return of items, please contact us with your order number within the specified warranty period. DO NOT dispose of any product parts as they may be required for inspection/repair.

EN-06

FCC REGULATORY COMPLIANCE

This device complies with part 15 of the FCC Rules. Operation is subject to the following two conditions:

(1) This device may not cause harmful interference, and (2) this device must accept any interference received, including interference that may cause undesired operation.

Warning: Changes or modifications not expressly approved by the party responsible for compliance could void the user's authority to operate the equipment.

Note: This equipment has been tested and found to comply with the limits for a Class B digital device, pursuant to Part 15 of the FCC Rules. These limits are designed to provide reasonable protection against harmful interference in a residential installation. This equipment generates, uses and can radiate radio frequency energy and, if not installed and used in accordance with the instructions, may cause harmful interference to radio communications.

However, there is no guarantee that interference will not occur in a particular installation.

If this equipment does cause harmful interference to radio or television reception, which can be determined by turning the equipment off and on, the user is encouraged to try to correct the interference by one or more of the following measures:

- Reorient or relocate the receiving antenna.
- Increase the separation between the equipment and receiver.
- Connect the equipment into an outlet on a circuit different from that to which the receiver is connected.
- Consult the dealer or an experienced radio/TV technician for help.

RF Exposure Compliance

This equipment complies with FCC radiation exposure limits set forth for an uncontrolled environment. This transmitter must not be co-located or operating in conjunction with any other antenna or transmitter.

ISED Regulatory compliance

This device contains licence-exempt transmitters that comply with Innovation, Science and Economic Development Canada's licence-exempt RSS(s).

Operation is subject to the following two conditions:

(1) This device may not cause interference.

(2) This device must accept any interference, including interference that may cause undesired operation of the device.

Le présent appareil est conforme aux CNR d'Industrie Canada applicables aux appareils radio exempts de licence. L'exploitation est autorisée aux deux conditions suivantes:

(1) L'appareil ne doit pas produire de brouillage, et (2) l'utilisateur de l'appareil doit accepter tout brouillage radioélectrique subi, même si le brouillage est susceptible d'en compromettre le fonctionnement.

This equipment complies with IC RSS-102 radiation exposure limits set forth for an uncontrolled environment.

Cet équipement est conforme aux limites d'exposition aux radiations IC CNR-102 établies pour un environnement non contrôlé.

EN-07

EN

Notice: This marking indicates that this product should not be disposed with other household wastes throughout the EU. To prevent possible harm to the environment or human health from uncontrolled waste disposal, recycle it responsibly to promote the sustainable reuse of material resources. To return your used device, please use the return and collection systems or contact the retailer where the product was purchased. They can take this product for environmental safe recycling.

DE

Hinweis: Dieses Symbol auf dem Gerät oder seiner Verpackung weist darauf hin: Entsorgen Sie Elektrogeräte nicht als unsortierten Siedlungsabfall; verwenden Sie getrennte Sammelssysteme. Wenden Sie sich an Ihre örtliche Behörde, um Informationen über die verfügbaren Sammel-systeme zu erhalten. Wenn Elektrogeräte auf Deponien oder Müllhöfen entsorgt werden, können gefährliche Stoffe ins Grundwasser austreten und in die Nahrungskette gelangen, was Ihre Gesundheit und Ihr Wohlbefinden schädigen kann. Beim Austausch aller gegen neue Geräte ist der Händler gesetzlich verpflichtet, Ihr Algerät mindestens kostenlos zur Entsorgung zurückzunehmen.

FR

Avertissement: Ce symbole sur l'appareil ou son emballage indique : Ne pas jeter les appareils électriques dans les décharges municipales non triées; utiliser des installations de collecte séparées. Contactez votre autorité locale pour obtenir des informations sur les systèmes de collecte disponibles. Si les appareils électriques sont éliminés dans des décharges ou des dépôts, des substances dangereuses peuvent s'infiltrer dans les eaux souterraines et se retrouver dans la chaîne alimentaire, ce qui est préjudiciable à votre santé et à votre bien-être. Lors du remplacement d'anciens appareils par de nouveaux, le commerçant est également tenu de reprendre votre ancien appareil pour l'éliminer gratuitement.

IT

Avvertenze: Questo simbolo sul dispositivo o sulla confezione indica: Non smaltire gli apparecchi elettrici come rifiuti urbani non differenziati; utilizzare impianti di raccolta differenziata. Contattare le autorità locali per informazioni sui sistemi di raccolta disponibili. Se gli apparecchi elettrici vengono smaltiti in discariche o cassonetti, le sostanze pericolose possono infiltrarsi nelle acque sotterranee ed entrare nella catena alimentare, danneggiando la vostra salute e il vostro benessere. Quando si sostituiscono vecchi apparecchi con nuovi, il venditore è obbligato per legge a ritirare il vecchio apparecchio per lo smaltimento gratuito.

IT

Aviso: Este símbolo en el dispositivo o en su embalaje indica: No deseches los aparatos eléctricos como residuos municipales no clasificados; utilizar instalaciones de recogida separadas. Póngase en contacto con su autoridad local para obtener información sobre los sistemas de recogida disponibles. Si los aparatos eléctricos se eliminan en vertederos o vertederos, las sustancias peligrosas pueden filtrarse en las aguas subterráneas y entrar en la cadena alimentaria, dañando su salud y bienestar. Al reemplazar los electrodomésticos viejos por otros nuevos, el minorista está legalmente obligado a recuperar su antiguo aparato para su eliminación al menos de forma gratuita.

US Importer: JOICOM CORPORATION
14129 The Merge Street, Building 3 Unit A, Eastvale, CA 92880
UK Importer: EON(UK)LIMITED
Kemp House 160 City Road, London, EC1V 2NX, United Kingdom
EU Importer: Renpho GmbH
Lehmweg 17, 20251 Hamburg Hohenluft-Ost, Deutschland, Germany
Tel: +49 40 23969285 (DE ONLY)
[UK:REP] Richers & Vision Ltd.
Unit 58B, Bordon Enterprise Park, Budds Lane, Bordon, Hampshire,
GU35 0JE, U.K.
[EU:REP] C&E Connection E-Commerce (DE) GmbH
Zum Linnegraben 20, 65933, Frankfurt am Main, Germany
Email: info@ce-connection.de
Manufacturer: Shenzhen Ruiyi Business Technology Co., Ltd.
No. 810-C063, 8th Floor, Xiangbin International Financial Centre, No.18, West Free Trade Street,
China Special Economic Zone, Qianhai Bay, Shenzhen, Guangdong Province, 518000 China