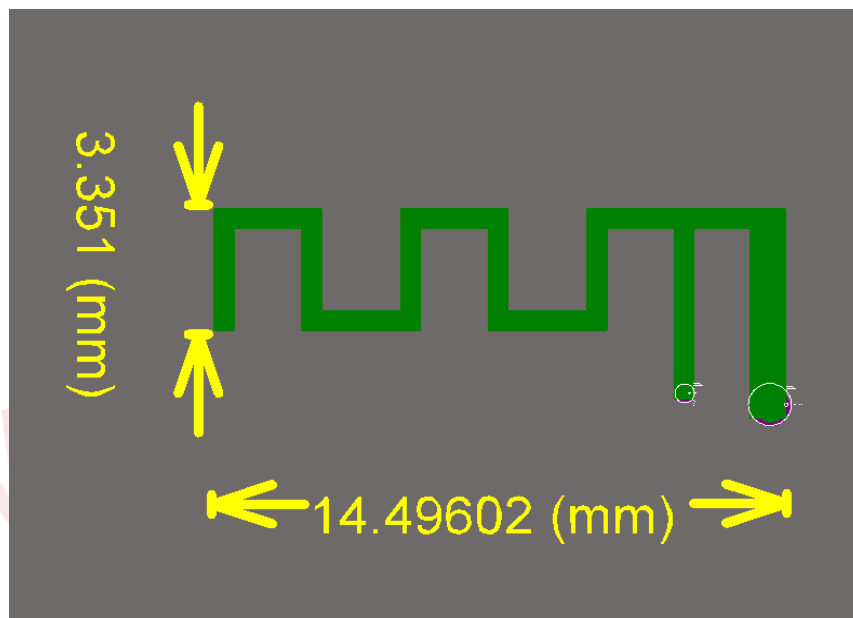


Antenna Specification



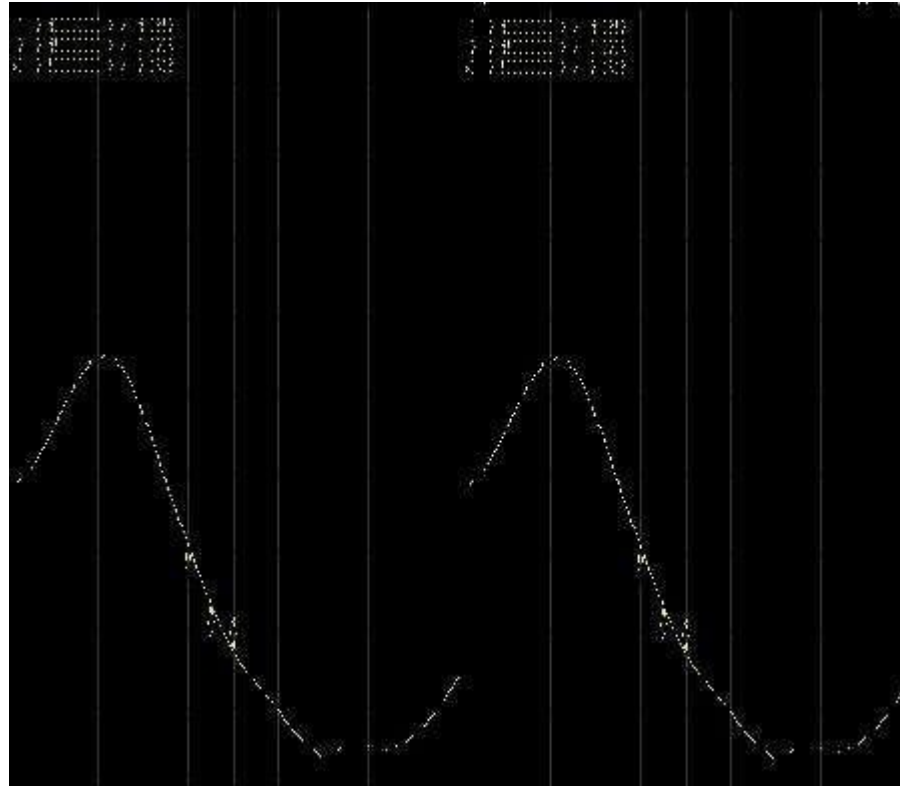
电性测试报告

1. Test Reports

Electrical Properties	
Frequency	2.400-2.48MHz
Impedance	50 Ohm Nominal
V.S.W.R	
Return Loss	10dB Min
Radiation	Omni-directional
Gain (Peak)	0dBi
Cable Loss	3.2 dB / m Max @ 2480 MHz
Polarization	Linear, Vertical
Admitted Power	
Connector	
Physical Properties	
Antenna Material	铜箔
Cable Type	O.D. 5.0mm // L= 28mm
Operating Temp.	-10 ~ +60 °C
Storage Temp.	-10 ~ +70 °C
Cable Color	银白

2. Test Result

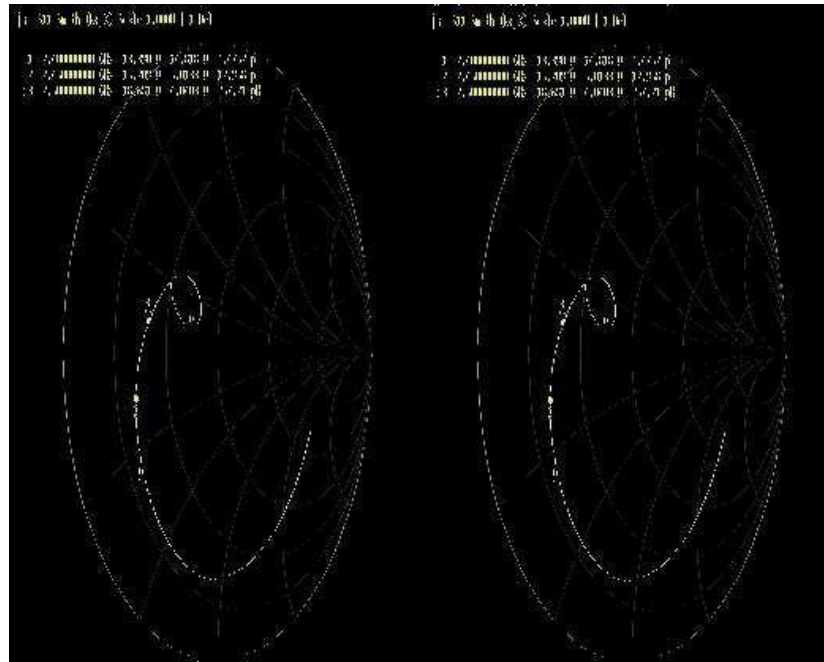
2.1 VSWR



Frequency (MHz)	2400	2450	2500
VSWR	4.08	3.32	2.69

2. Test Result

2.2 SMISH



Frequency (MHz)	2400	2450	2500
SMISH	13.39	15.20	18.68

2. Test Result

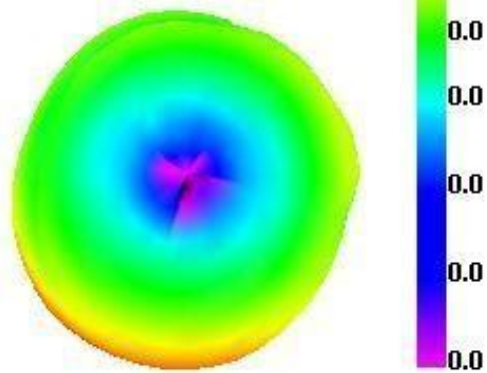
2.3 GAIN & Efficiency

Passive Test For 2000-2500								
Freq (MHz)	Effi (%)	Effi (dB)	Gain (dBi)	Gain (dBd)	Max (dB)	Min (dB)	Attenut Hor	Attenut Ver
2400	52.28	-2.82	-0.03	-2.12	0.03	-13.69	52.69	52.78
2410	52.01	-2.84	-0.08	-2.07	0.08	-14.38	52.99	52.97
2420	50.99	-2.93	-0.11	-2.26	-0.11	-14.67	52.94	52.99
2430	57.32	-2.42	-0.44	-1.71	0.44	-14.96	53.04	53.03
2440	55.1	-2.59	-0.28	-1.87	0.28	-16.75	53.08	53.08
2450	51.29	-2.9	0.0	-2.05	0.1	-17.98	53.26	53.24
2460	54.67	-2.62	-0.22	-1.93	0.22	-19.58	53.46	53.46
2470	58.23	-2.35	-0.35	-1.8	0.35	-18.37	53.35	53.28
2480	56.5	-2.48	-0.15	-2	0.15	-16.94	53.17	53.08
2490	54.45	-2.64	-0.12	-2.27	-0.12	-14.71	53.11	53.06
2500	54.97	-2.6	-0.19	-2.34	-0.19	-13.87	53.1	52.99

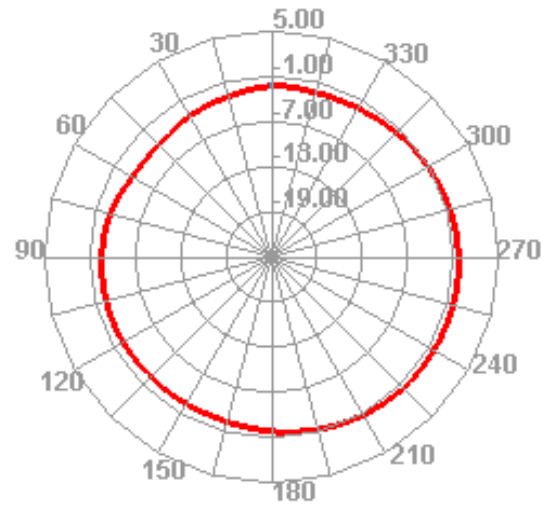
2. Test Result

2.4 3D DATE

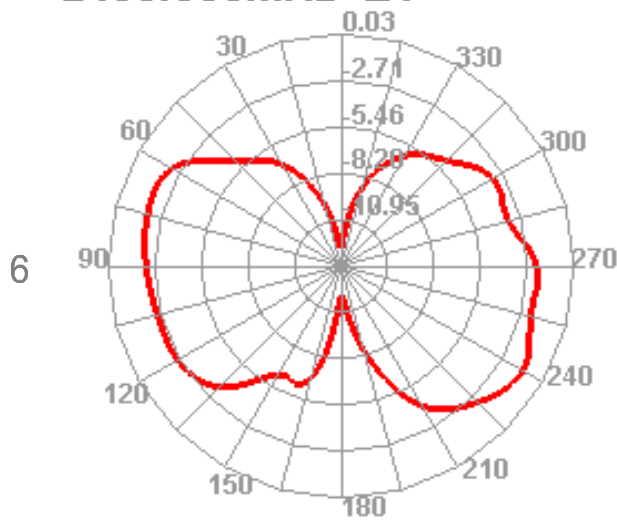
0 z



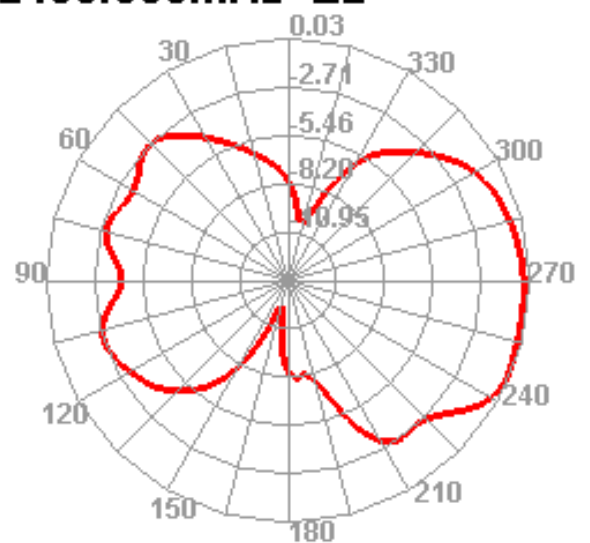
2400.000MHz H



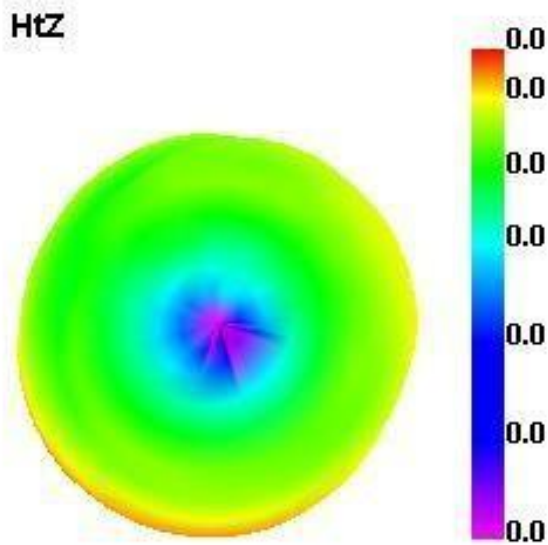
2400.000MHz E1



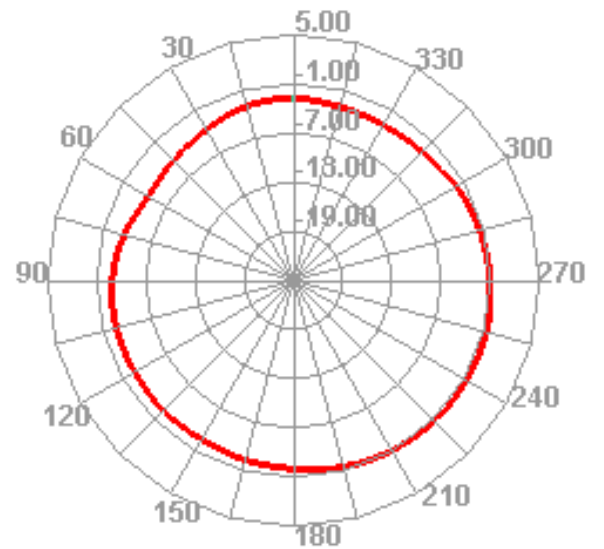
2400.000MHz E2



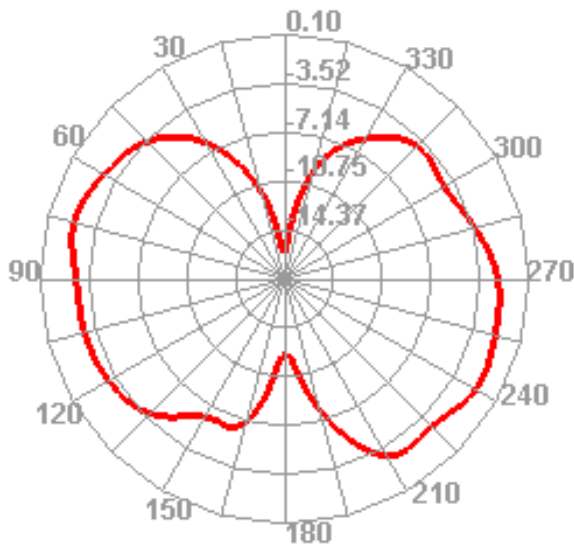
2. Test Result



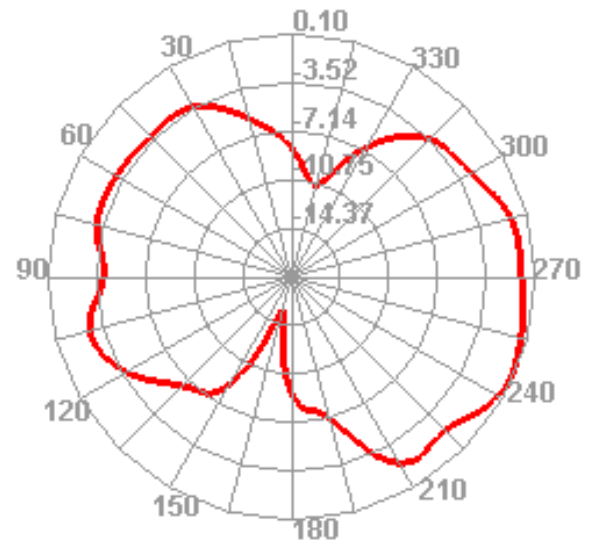
2450.000MHz H



2450.000MHz E1

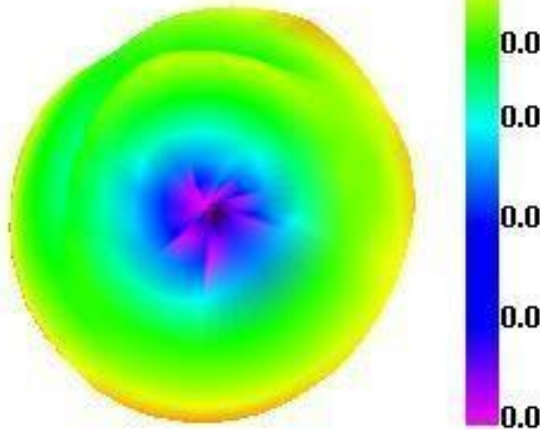


2450.000MHz E2

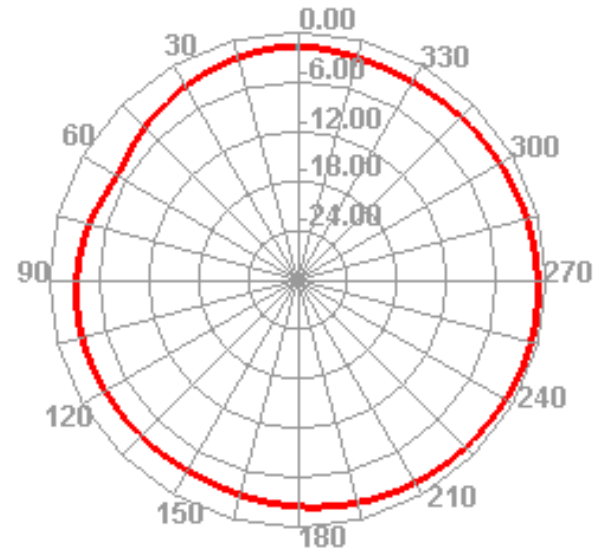


2. Test Result

(Xo

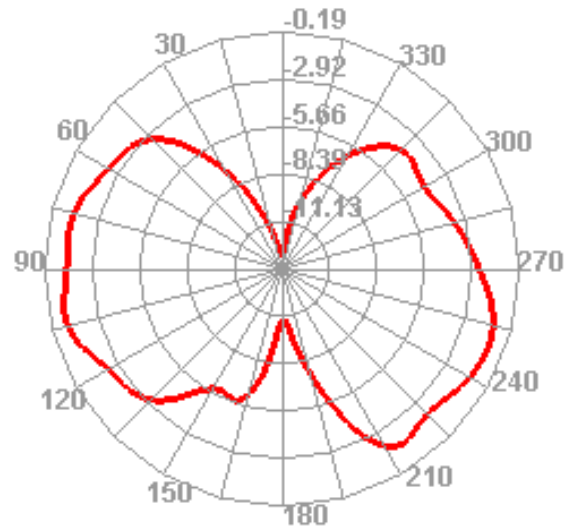


2500.000MHz H



2. Test Result

2500.000MHz E1



2500.000MHz E2

