



FCC Part 15C Test Report

FCC ID: 2A26P-HHLF01

Applicant: REESTAR INTERNATIONAL LIMITED

Address: UNIT 06-07, 28/F CONCORDIA PLAZA, 1 SCIENCE MUSEUM RD TST, EAST KLN, HONG KONG

Manufacturer: Shenzhen Ruiyi Business Technology Co., Ltd.
Address: No. 810-C063, 8th Floor, Xiangbin International Financial Centre, No.18, West Free Trade Street, China Special Economic Zone, Qianhai Bay, Shenzhen, Guangdong Province, 518000 China

EUT: Floor Lamp

Trade Mark: Homavida

Model Number: H-HLF01

Date of Receipt: Nov. 30, 2023

Test Date: Nov. 30, 2023 - Dec. 07, 2023

Date of Report: Dec. 07, 2023

Prepared By: Shenzhen DL Testing Technology Co., Ltd.
Address: 101-201, Building C, Shuanghuan, No.8, Baoqing Road, Baolong Industrial Zone, Baolong Street, Longgang District, Shenzhen, Guangdong, China

Applicable Standards: FCC PART 15 C 15.249
ANSI C63.10:2013

Test Result: Pass

Report Number: DL-20231207017E

Prepared (Test Engineer): Alisa Song

Reviewer (Supervisor): Jack Bu

Approved (Manager): Jade Yang



This test report is based on a single evaluation of one sample of above mentioned products. It is not permitted to be duplicated in extracts without written approval of Shenzhen DL Testing Technology Co., Ltd.



| Table of Contents | Page |
|---|-------------|
| 1 . SUMMARY OF TEST RESULTS | 4 |
| 1.1 MEASUREMENT UNCERTAINTY | 4 |
| 2 . GENERAL INFORMATION | 5 |
| 2.1 GENERAL DESCRIPTION OF EUT | 5 |
| 2.2 DESCRIPTION OF TEST MODES | 6 |
| 2.3 BLOCK DIGRAM SHOWING THE CONFIGURATION OF SYSTEM TESTED | 6 |
| 2.4 DESCRIPTION OF SUPPORT UNITS(CONDUCTED MODE) | 7 |
| 2.5 TABLE OF PARAMETERS OF TEST SOFTWARE SETTING | 7 |
| 2.6 EQUIPMENTS LIST FOR ALL TEST ITEMS | 8 |
| 3 . EMC EMISSION TEST | 9 |
| 3.1 CONDUCTED EMISSION MEASUREMENT | 9 |
| 3.1.1 POWER LINE CONDUCTED EMISSION LIMITS | 9 |
| 3.1.2 TEST PROCEDURE | 9 |
| 3.1.3 DEVIATION FROM TEST STANDARD | 9 |
| 3.1.4 TEST SETUP | 10 |
| 3.1.5 EUT OPERATING CONDITIONS | 10 |
| 3.1.6 TEST RESULTS | 10 |
| 3.2 RADIATED EMISSION MEASUREMENT | 13 |
| 3.2.1 RADIATED EMISSION LIMITS | 13 |
| 3.2.2 TEST PROCEDURE | 14 |
| 3.2.3 DEVIATION FROM TEST STANDARD | 14 |
| 3.2.4 TEST SETUP | 14 |
| 3.2.5 EUT OPERATING CONDITIONS | 15 |
| 3.2.6 TEST RESULTS (BETWEEN 9KHZ – 30 MHZ) | 16 |
| 3.2.7 TEST RESULTS (BETWEEN 30MHZ – 1GHZ) | 17 |
| 3.2.8 TEST RESULTS (1GHZ~25GHZ) | 19 |
| 3.3 RADIATED BAND EMISSION MEASUREMENT | 20 |
| 3.3.1 TEST REQUIREMENT: | 20 |
| 3.3.2 TEST PROCEDURE | 20 |
| 3.3.3 DEVIATION FROM TEST STANDARD | 20 |
| 3.3.4 TEST SETUP | 21 |
| 3.3.5 EUT OPERATING CONDITIONS | 21 |
| 4 . BANDWIDTH TEST | 23 |
| 4.1 APPLIED PROCEDURES / LIMIT | 23 |
| 4.1.1 TEST PROCEDURE | 23 |
| 4.1.2 DEVIATION FROM STANDARD | 23 |
| 4.1.3 TEST SETUP | 23 |



| Table of Contents | Page |
|--------------------------------|-------------|
| 4.1.4 EUT OPERATION CONDITIONS | 23 |
| 4.1.5 TEST RESULTS | 24 |
| 5 . ANTENNA REQUIREMENT | 25 |
| 5.1 STANDARD REQUIREMENT | 25 |
| 5.2 EUT ANTENNA | 25 |
| 6 . TEST SEUUP PHOTO | 26 |
| 7 . EUT PHOTO | 28 |



1. SUMMARY OF TEST RESULTS

Test procedures according to the technical standards:

| FCC Part15 (15.249) , Subpart C | | | |
|--|---|----------|--------|
| Standard Section | Test Item | Judgment | Remark |
| 15.207 | Conducted Emission | PASS | |
| 15.205(a), 15.209(a) 15.249(a), 15.249(c) | Fundamental &Radiated Spurious Emission Measurement | PASS | |
| 15.249(d) | Band Edge Emission | PASS | |
| 15.215(c) | 20dB Bandwidth | PASS | |
| 15.203 | Antenna Requirement | PASS | |

NOTE:

(1)" N/A" denotes test is not applicable in this Test Report

Test lab: Shenzhen DL Testing Technology Co., Ltd.

Address: 101-201, Building C, Shuanghuan, No.8, Baoqing Road, Baolong Industrial Zone, Baolong Street, Longgang District, Shenzhen, Guangdong, China

FCC Test Firm Registration Number: 854456

Designation Number: CN1307

IC Registered No.: 27485

CAB ID.: CN0118

1.1 MEASUREMENT UNCERTAINTY

The reported uncertainty of measurement $y \pm U$, where expanded uncertainty U is based on a standard uncertainty multiplied by a coverage factor of $k=2$, providing a level of confidence of approximately **95 %**.

| No. | Item | Uncertainty |
|-----|------------------------------|---------------------------|
| 1 | Conducted Emission Test | $\pm 2.56\text{dB}$ |
| 2 | RF power,conducted | $\pm 0.42\text{dB}$ |
| 3 | Spurious emissions,conducted | $\pm 2.76\text{dB}$ |
| 4 | All emissions,radiated(<1G) | $\pm 3.65\text{dB}$ |
| 5 | All emissions,radiated(>1G) | $\pm 4.89\text{dB}$ |
| 6 | Temperature | $\pm 0.5^{\circ}\text{C}$ |
| 7 | Humidity | $\pm 2\%$ |
| 8 | 20dB Bandwidth | $\pm 0.2\text{MHz}$ |



2. GENERAL INFORMATION

2.1 GENERAL DESCRIPTION OF EUT

| | |
|------------------------|--|
| Product Name: | Floor Lamp |
| Trademark | Homavida |
| Model No.: | H-HLF01 |
| Model Difference | N/A |
| Operation Frequency: | 2402~2480MHz |
| Channel numbers: | 40 Channels |
| Channel separation: | 2M |
| Modulation technology: | GFSK |
| Antenna Type: | PCB Antenna |
| Antenna gain: | 0dBi |
| Power supply: | DC 12V from adapter |
| Adapter: | MODEL: AD0181-1201500UB INPUT: 100-240V~ 50-60Hz 0.5A Max. OUTPUT: DC 12.0V/1.5A 18.0W |

Note:

1.For a more detailed features description, please refer to the manufacturer's specifications or the User's Manual.

2.The EUT's all information provided by client.

3.

| Channel List | | | | | |
|--------------|-----------------|---------|-----------------|---------|-----------------|
| Channel | Frequency (MHz) | Channel | Frequency (MHz) | Channel | Frequency (MHz) |
| 00 | 2402 | 14 | 2430 | 27 | 2456 |
| 01 | 2404 | 15 | 2432 | 28 | 2458 |
| 02 | 2406 | 16 | 2434 | 29 | 2460 |
| 03 | 2408 | 17 | 2436 | 30 | 2462 |
| 04 | 2410 | 18 | 2438 | 31 | 2464 |
| 05 | 2412 | 19 | 2440 | 32 | 2466 |
| 06 | 2414 | 20 | 2442 | 33 | 2468 |
| 07 | 2416 | 21 | 2444 | 34 | 2470 |
| 08 | 2418 | 22 | 2446 | 35 | 2472 |
| 09 | 2420 | 23 | 2448 | 36 | 2474 |
| 10 | 2422 | 24 | 2450 | 37 | 2476 |
| 11 | 2424 | 25 | 2452 | 38 | 2478 |
| 12 | 2426 | 26 | 2454 | 39 | 2480 |
| 13 | 2428 | / | / | / | / |



2.2 DESCRIPTION OF TEST MODES

To investigate the maximum EMI emission characteristics generates from EUT, the test system was pre-scanning tested base on the consideration of following EUT operation mode or test configuration mode which possible have effect on EMI emission level. Each of these EUT operation mode(s) or test configuration mode(s) mentioned above was evaluated respectively.

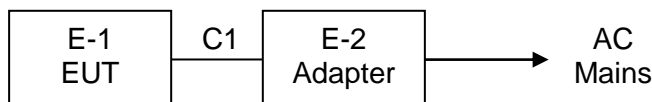
| Pretest Mode | Description | |
|-----------------------------------|-------------|------|
| Mode 1 | CH00 | GFSK |
| Mode 2 | CH19 | |
| Mode 3 | CH39 | |
| Mode 4 | Link Mode | |
| For Conducted & Radiated Emission | | |
| Final Test Mode | Description | |
| Mode 1 | CH00 | GFSK |
| Mode 2 | CH19 | |
| Mode 3 | CH39 | |
| Mode 4 | Link Mode | |

Note:

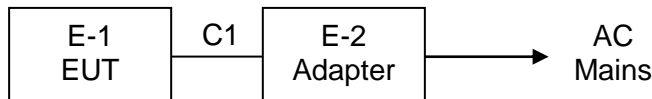
- (1) The measurements are performed at the highest, middle, lowest available channels.
- (2) A new fully charged battery was used for testing during the test.

2.3 BLOCK DIGRAM SHOWING THE CONFIGURATION OF SYSTEM TESTED

Radiated Spurious Emission Test



Conducted Spurious Emission Test





2.4 DESCRIPTION OF SUPPORT UNITS(CONDUCTED MODE)

The EUT has been tested as an independent unit together with other necessary accessories or support units. The following support units or accessories were used to form a representative test configuration during the tests.

| Item | Equipment | Model/Type No. | Series No. | Note |
|------|------------|------------------|------------|------|
| E-1 | Floor Lamp | H-HLF01 | N/A | EUT |
| E-2 | Adapter | AD0181-1201500UB | N/A | |

| Item | Shielded Type | Ferrite Core | Length | Note |
|------|---------------|--------------|--------|------|
| | | | | |

Note:

- (1) For detachable type I/O cable should be specified the length in cm in 『Length』 column.

2.5 TABLE OF PARAMETERS OF TEST SOFTWARE SETTING

During testing, channel & power controlling software provided by the customer was used to control the operating channel as well as the output power level. The RF output power selection is for the setting of RF output power expected by the customer and is going to be fixed on the end product.

| Test software Version | Test program: FCC_test tool | | |
|---------------------------|-----------------------------|----------|----------|
| Frequency | 2402 MHz | 2440 MHz | 2480 MHz |
| Power Setting of Softwave | 10 | 10 | 10 |

**2.6 EQUIPMENTS LIST FOR ALL TEST ITEMS**

Radiation test, Band-edge test and 20db bandwidth test equipment

| Item | Equipment | Manufacturer | Type No. | Serial No. | Last calibration | Calibrated until |
|------|----------------------------------|-----------------|-----------|------------|------------------|------------------|
| 1 | Spectrum Analyzer (9kHz-26.5GHz) | Agilent | E4408B | MY50140780 | Nov. 04, 2023 | Nov. 03, 2024 |
| 2 | Test Receiver (9kHz-7GHz) | R&S | ESRP7 | 101393 | Nov. 04, 2023 | Nov. 03, 2024 |
| 3 | Bilog Antenna (30MHz-1GHz) | R&S | VULB9162 | 00306 | Nov. 04, 2023 | Nov. 03, 2024 |
| 4 | Horn Antenna (1GHz-18GHz) | Schwarzbeck | BBHA9120D | 02139 | Nov. 04, 2023 | Nov. 03, 2024 |
| 5 | Horn Antenna (18GHz-40GHz) | A.H. Systems | SAS-574 | 588 | Nov. 04, 2023 | Nov. 03, 2024 |
| 6 | Amplifier (9KHz-6GHz) | Schwarzbeck | BBV9743B | 00153 | Nov. 04, 2023 | Nov. 03, 2024 |
| 7 | Amplifier (1GHz-18GHz) | EMEC | EM01G8GA | 00270 | Nov. 04, 2023 | Nov. 03, 2024 |
| 8 | Amplifier (18GHz-40GHz) | Quanjuda | DLE-161 | 97 | Nov. 04, 2023 | Nov. 03, 2024 |
| 9 | Loop Antenna (9KHz-30MHz) | Schwarzbeck | FMZB1519B | 00014 | Nov. 04, 2023 | Nov. 03, 2024 |
| 10 | RF cables1 (9kHz-1GHz) | ChengYu | 966 | 004 | Nov. 04, 2023 | Nov. 03, 2024 |
| 11 | RF cables2 (1GHz-40GHz) | ChengYu | 966 | 003 | Nov. 04, 2023 | Nov. 03, 2024 |
| 12 | Antenna connector | Florida RF Labs | N/A | RF 01# | Nov. 04, 2023 | Nov. 03, 2024 |
| 13 | Power probe | KEYSIGHT | U2021XA | MY55210018 | Nov. 04, 2023 | Nov. 03, 2024 |
| 14 | Signal Analyzer 9kHz-26.5GHz | Agilent | N9020A | MY55370280 | Nov. 04, 2023 | Nov. 03, 2024 |
| 15 | Test Receiver 20kHz-40GHz | R&S | ESU 40 | 100376 | Nov. 04, 2023 | Nov. 03, 2024 |
| 16 | D.C. Power Supply | LongWei | PS-305D | 010964729 | Nov. 04, 2023 | Nov. 03, 2024 |

Conduction Test equipment

| Item | Equipment | Manufacturer | Type No. | Serial No. | Last calibration | Calibrated until |
|------|-------------------|--------------|----------|------------|------------------|------------------|
| 1 | 843 Shielded Room | ChengYu | 843 Room | 843 | Sep. 20, 2022 | Sep. 19, 2025 |
| 2 | EMI Receiver | R&S | ESR | 101421 | Nov. 04, 2023 | Nov. 03, 2024 |
| 3 | LISN | R&S | ENV216 | 102417 | Nov. 04, 2023 | Nov. 03, 2024 |
| 4 | 843 Cable 1# | ChengYu | CE Cable | 001 | Nov. 04, 2023 | Nov. 03, 2024 |

Other

| Item | Name | Manufacturer | Model | Software version |
|------|------------------------------|--------------|---------|------------------|
| 1 | EMC Conduction Test System | FALA | EZ_EMCC | EMC-CON 3A1.1 |
| 2 | EMC radiation test system | FALA | EZ_EMCC | FA-03A2 |
| 3 | RF test system | MAIWEI | MTS8310 | 2.0.0.0 |
| 4 | RF communication test system | MAIWEI | MTS8200 | 2.0.0.0 |



3. EMC EMISSION TEST

3.1 CONDUCTED EMISSION MEASUREMENT

3.1.1 POWER LINE CONDUCTED EMISSION Limits (Frequency Range 150KHz-30MHz)

| FREQUENCY (MHz) | Limit (dBuV) | | Standard |
|-----------------|--------------|-----------|----------|
| | Quasi-peak | Average | |
| 0.15 -0.5 | 66 - 56 * | 56 - 46 * | FCC |
| 0.50 -5.0 | 56.00 | 46.00 | FCC |
| 5.0 -30.0 | 60.00 | 50.00 | FCC |

Note:

- (1) The tighter limit applies at the band edges.
- (2) The limit of " * " marked band means the limitation decreases linearly with the logarithm of the frequency in the range.

The following table is the setting of the receiver

| Receiver Parameters | Setting |
|---------------------|----------|
| Attenuation | 10 dB |
| Start Frequency | 0.15 MHz |
| Stop Frequency | 30 MHz |
| IF Bandwidth | 9 kHz |

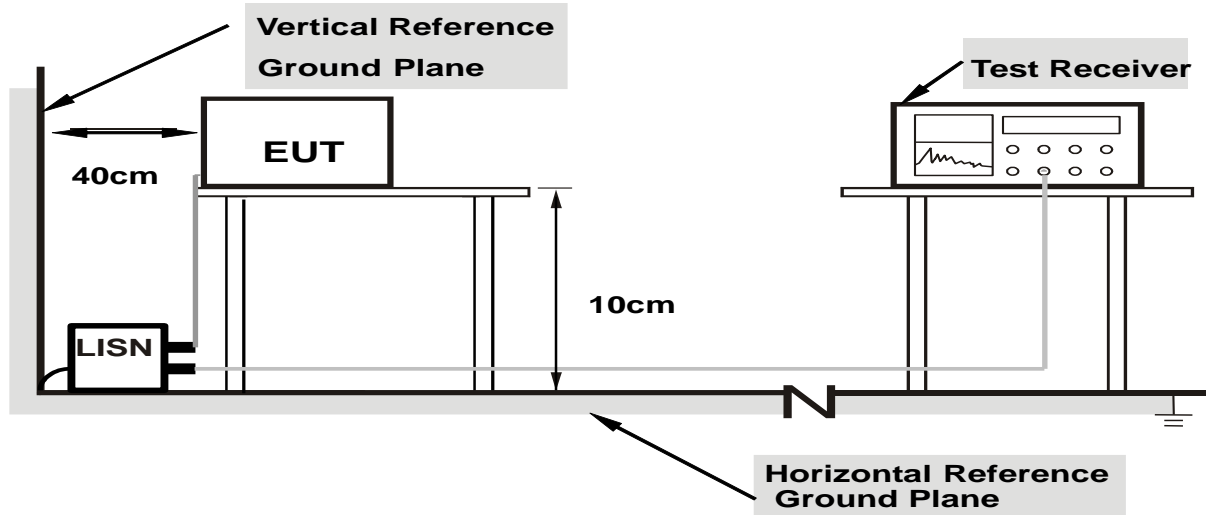
3.1.2 TEST PROCEDURE

- a. The EUT was placed 0.1 meters from the horizontal ground plane with EUT being connected to the power mains through a line impedance stabilization network (LISN). All other support equipments powered from additional LISN(s). The LISN provide 50 Ohm/ 50uH of coupling impedance for the measuring instrument.
- b. Interconnecting cables that hang closer than 40 cm to the ground plane shall be folded back and forth in the center forming a bundle 30 to 40 cm long.
- c. I/O cables that are not connected to a peripheral shall be bundled in the center. The end of the cable may be terminated, if required, using the correct terminating impedance. The overall length shall not exceed 1 m.
- d. LISN at least 80 cm from nearest part of EUT chassis.
- e. For the actual test configuration, please refer to the related Item –EUT Test Photos.

3.1.3 DEVIATION FROM TEST STANDARD

No deviation

3.1.4 TEST SETUP



- Note:**
- 1.Support units were connected to second LISN.
 - 2.Both of LISNs (AMN) are 80 cm from EUT and at least 80 from other units and other metal planes

3.1.5 EUT OPERATING CONDITIONS

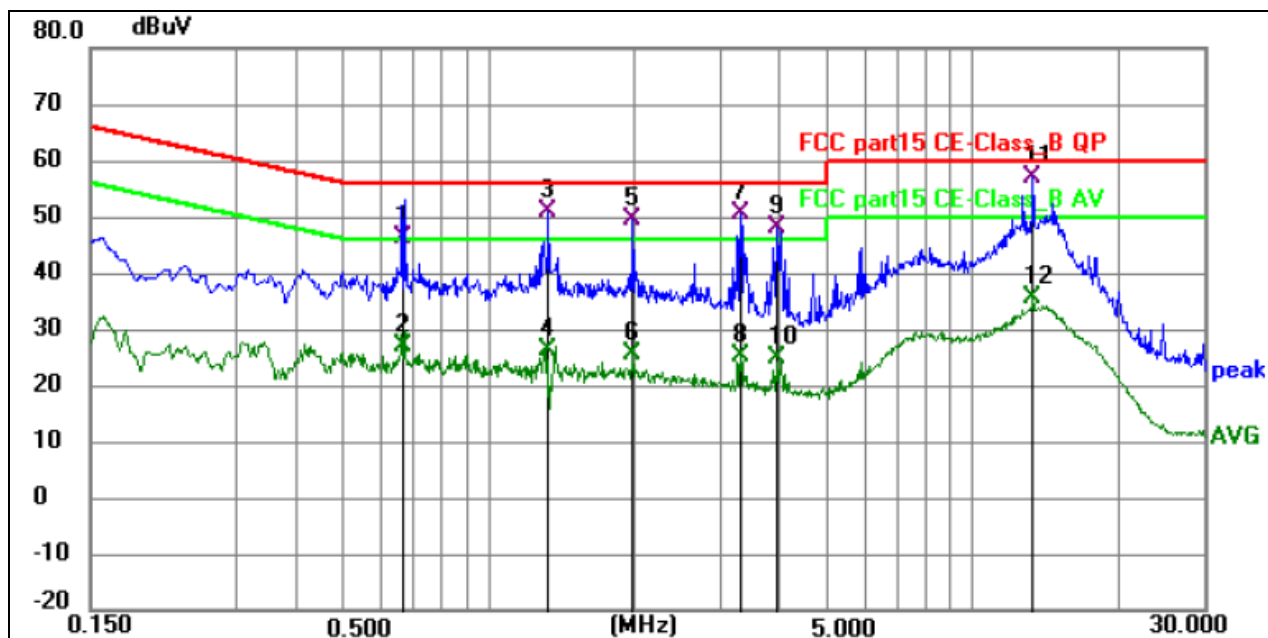
The EUT was configured for testing in a typical fashion (as a customer would normally use it). The EUT has been programmed to continuously transmit during test. This operating condition was tested and used to collect the included data.

We pretest AC 120V and AC 230V, the worst voltage was AC 120V and the data recording in the report.

3.1.6 TEST RESULTS



| | | | |
|----------------|--------------|--------------------|--------|
| Temperature: | 25 °C | Relative Humidity: | 54% |
| Pressure: | 1010hPa | Phase : | L |
| Test Voltage : | AC 120V/60Hz | Test Mode: | Mode 4 |



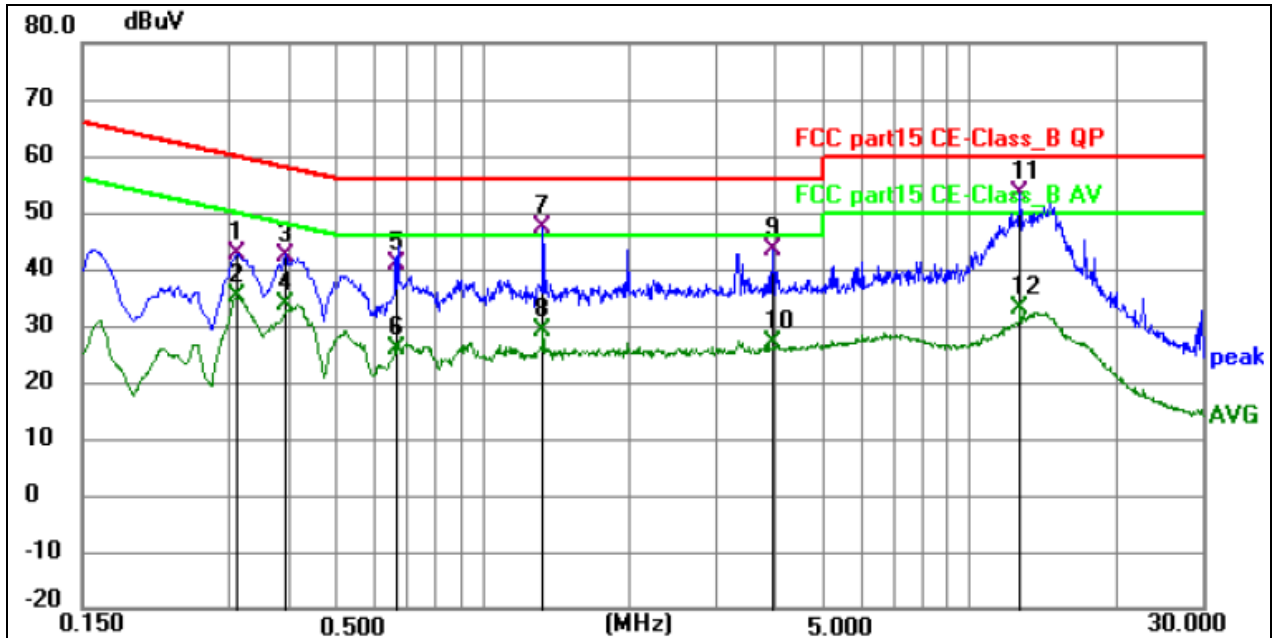
Remark:

Margin = Limit – Level, Correct Factor = Cable lose + LISN insertion loss, Level= Reading + Correct factor

| No. | Frequency (MHz) | Reading (dBuV) | Factor (dB) | Level (dBuV) | Limit (dBuV) | Margin (dB) | Detector | P/F | Remark |
|------|-----------------|----------------|-------------|--------------|--------------|-------------|----------|-----|--------|
| 1 | 0.6675 | 36.82 | 9.43 | 46.25 | 56.00 | -9.75 | QP | P | |
| 2 | 0.6675 | 17.41 | 9.43 | 26.84 | 46.00 | -19.16 | AVG | P | |
| 3 | 1.3290 | 41.23 | 9.53 | 50.76 | 56.00 | -5.24 | QP | P | |
| 4 | 1.3290 | 16.57 | 9.53 | 26.10 | 46.00 | -19.90 | AVG | P | |
| 5 | 1.9905 | 39.35 | 9.96 | 49.31 | 56.00 | -6.69 | QP | P | |
| 6 | 1.9905 | 15.41 | 9.96 | 25.37 | 46.00 | -20.63 | AVG | P | |
| 7 | 3.3180 | 40.87 | 9.77 | 50.64 | 56.00 | -5.36 | QP | P | |
| 8 | 3.3180 | 15.52 | 9.77 | 25.29 | 46.00 | -20.71 | AVG | P | |
| 9 | 3.9255 | 38.34 | 9.84 | 48.18 | 56.00 | -7.82 | QP | P | |
| 10 | 3.9255 | 14.86 | 9.84 | 24.70 | 46.00 | -21.30 | AVG | P | |
| 11 * | 13.3305 | 46.68 | 10.20 | 56.88 | 60.00 | -3.12 | QP | P | |
| 12 | 13.3305 | 25.39 | 10.20 | 35.59 | 50.00 | -14.41 | AVG | P | |



| | | | |
|----------------|--------------|--------------------|--------|
| Temperature: | 25 °C | Relative Humidity: | 54% |
| Pressure: | 1010hPa | Phase : | N |
| Test Voltage : | AC 120V/60Hz | Test Mode: | Mode 4 |



Remark:

Margin = Limit – Level, Correct Factor = Cable lose + LISN insertion loss, Level= Reading + Correct factor

| No. | Frequency (MHz) | Reading (dBuV) | Factor (dB) | Level (dBuV) | Limit (dBuV) | Margin (dB) | Detector | P/F | Remark |
|------|-----------------|----------------|-------------|--------------|--------------|-------------|----------|-----|--------|
| 1 | 0.3120 | 33.42 | 9.09 | 42.51 | 59.92 | -17.41 | QP | P | |
| 2 | 0.3120 | 26.00 | 9.09 | 35.09 | 49.92 | -14.83 | AVG | P | |
| 3 | 0.3930 | 32.92 | 9.28 | 42.20 | 58.00 | -15.80 | QP | P | |
| 4 | 0.3930 | 24.49 | 9.28 | 33.77 | 48.00 | -14.23 | AVG | P | |
| 5 | 0.6675 | 31.49 | 9.27 | 40.76 | 56.00 | -15.24 | QP | P | |
| 6 | 0.6675 | 16.66 | 9.27 | 25.93 | 46.00 | -20.07 | AVG | P | |
| 7 | 1.3245 | 37.71 | 9.61 | 47.32 | 56.00 | -8.68 | QP | P | |
| 8 | 1.3245 | 19.37 | 9.61 | 28.98 | 46.00 | -17.02 | AVG | P | |
| 9 | 3.9390 | 33.47 | 10.02 | 43.49 | 56.00 | -12.51 | QP | P | |
| 10 | 3.9390 | 17.00 | 10.02 | 27.02 | 46.00 | -18.98 | AVG | P | |
| 11 * | 12.6645 | 43.10 | 10.35 | 53.45 | 60.00 | -6.55 | QP | P | |
| 12 | 12.6645 | 22.86 | 10.35 | 33.21 | 50.00 | -16.79 | AVG | P | |



3.2 RADIATED EMISSION MEASUREMENT

3.2.1 RADIATED EMISSION LIMITS (Frequency Range 9kHz-1000MHz)

In case the emission fall within the restricted band specified on 15.205(a), then the 15.209(a) limit in the table below has to be followed.

| Frequency (MHz) | Field Strength (micровolts/meter) | Measurement Distance (meters) |
|-----------------|-----------------------------------|-------------------------------|
| 0.009~0.490 | 2400/F(KHz) | 300 |
| 0.490~1.705 | 24000/F(KHz) | 30 |
| 1.705~30.0 | 30 | 30 |
| 30~88 | 100 | 3 |
| 88~216 | 150 | 3 |
| 216~960 | 200 | 3 |
| Above 960 | 500 | 3 |

The field strength of emissions from intentional radiators operated within these frequency bands shall comply with the following:

| Fundamental Frequency | Field Strength of Fundamental (millivolts/meter) | Field Strength of Harmonics (microvolts/meter) |
|-----------------------|--|--|
| 902 - 928 MHz | 50 | 500 |
| 2400 - 2483.5 MHz | 50 | 500 |
| 5725 - 5875 MHz | 50 | 500 |
| 24.0 - 24.25 GHz | 250 | 2500 |

LIMITS OF RADIATED EMISSION MEASUREMENT (Above 1000MHz)

| FREQUENCY (MHz) | Limit (dBuV/m) (at 3M) | |
|-----------------|------------------------|---------|
| | PEAK | AVERAGE |
| Above 1000 | 74 | 54 |

Notes:

- (1) The limit for radiated test was performed according to FCC PART 15C.
- (2) The tighter limit applies at the band edges.
- (3) Emission level (dBuV/m)=20log Emission level (uV/m).

Receiver setup:

| Frequency | Detector | RBW | VBW | Value |
|--------------|------------|--------|--------|------------|
| 9KHz-150KHz | Quasi-peak | 200Hz | 600Hz | Quasi-peak |
| 150KHz-30MHz | Quasi-peak | 9KHz | 30KHz | Quasi-peak |
| 30MHz-1GHz | Quasi-peak | 100KHz | 300KHz | Quasi-peak |
| Above 1GHz | Peak | 1MHz | 3MHz | Peak |
| | Peak | 1MHz | 10Hz | Average |

3.2.2 TEST PROCEDURE

Below 1GHz test procedure as below:

- The EUT was placed on the top of a rotating table 0.1 meters above the ground at a 3 meter semi-anechoic chamber. The table was rotated 360 degrees to determine the position of the highest radiation.
- The EUT was set 3 meters away from the interference-receiving antenna, which was mounted on the top of a variable-height antenna tower.
- The antenna height is varied from one meter to four meters above the ground to determine the maximum value of the field strength. Both horizontal and vertical polarizations of the antenna are set to make the measurement.
- For each suspected emission, the EUT was arranged to its worst case and then the antenna was tuned to heights from 1 meter to 4 meters (for the test frequency of below 30MHz, the antenna was tuned to heights 1 meter) and the rotatable table was turned from 0 degrees to 360 degrees to find the maximum reading.
- The test-receiver system was set to Peak Detect Function and Specified Bandwidth with Maximum Hold Mode.
- If the emission level of the EUT in peak mode was 10dB lower than the limit specified, then testing could be stopped and the peak values of the EUT would be reported. Otherwise the emissions that did not have 10dB margin would be re-tested one by one using peak, quasi-peak or average method as specified and then reported in a data sheet.

Above 1GHz test procedure as below:

- The EUT was placed on the top of a rotating table 1.5 meters above the ground at a 3 meter semi-anechoic chamber. (Above 18GHz the distance is 3 meter and table is 1.5 metre).
- Test the EUT in the lowest channel ,the middle channel ,the Highest channel

Note:

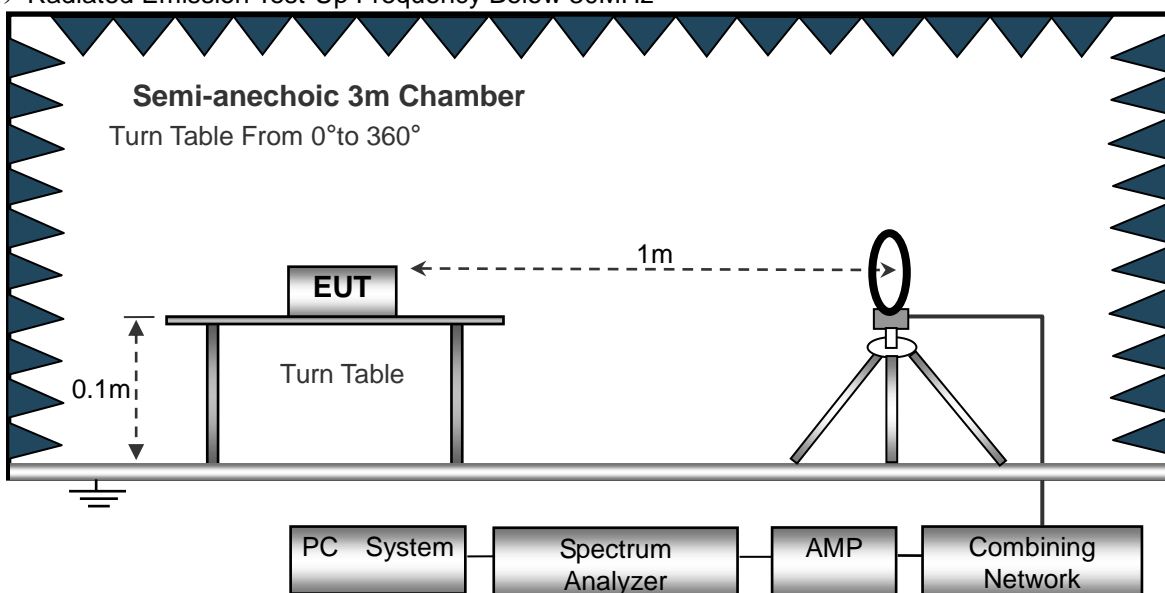
Both horizontal and vertical antenna polarities were tested and performed pretest to three orthogonal axis. The worst case emissions were reported

3.2.3 DEVIATION FROM TEST STANDARD

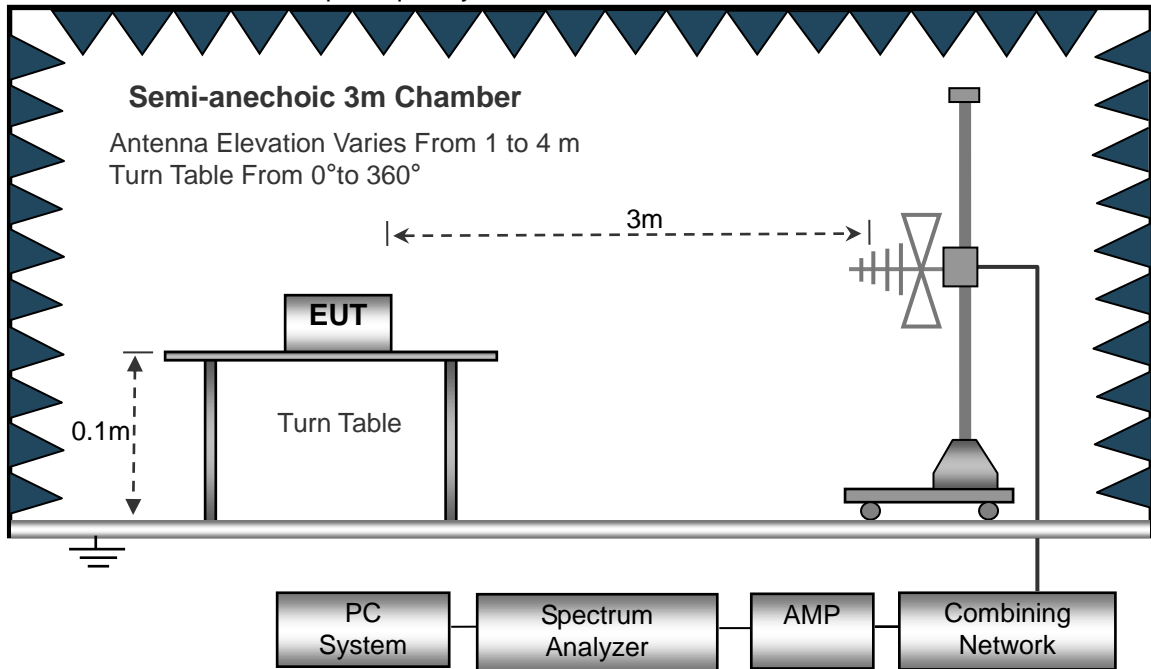
No deviation

3.2.4 TEST SETUP

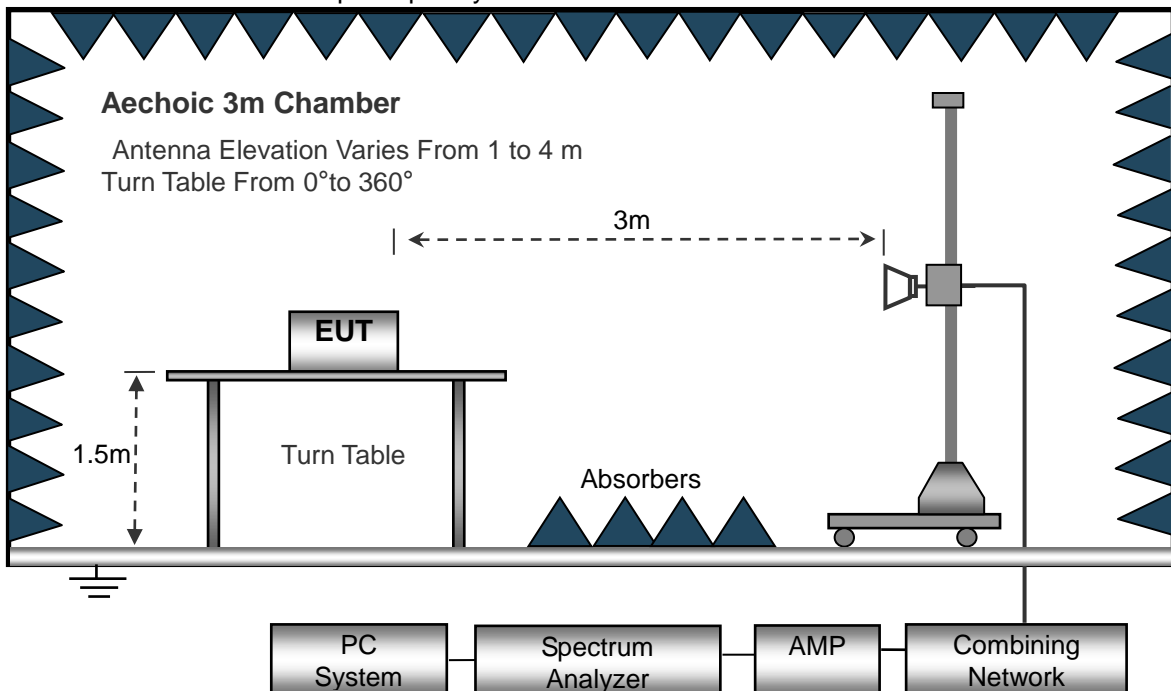
(A) Radiated Emission Test-Up Frequency Below 30MHz



(B) Radiated Emission Test-Up Frequency 30MHz~1GHz



(C) Radiated Emission Test-Up Frequency Above 1GHz



3.2.5 EUT OPERATING CONDITIONS

The EUT tested system was configured as the statements of 2.3 Unless otherwise a special operating condition is specified in the follows during the testing.

**3.2.6 TEST RESULTS (BETWEEN 9KHZ – 30 MHZ)**

| | | | |
|--------------|----------|--------------------|--------------|
| Temperature: | 20°C | Relative Humidity: | 48% |
| Pressure: | 1010 hPa | Test Voltage : | AC 120V/60Hz |
| Test Mode : | Mode 4 | Polarization : | -- |

| Freq. (MHz) | Reading (dBuV/m) | Limit (dBuV/m) | Margin (dB) | State P/F |
|----------------|---------------------|-------------------|----------------|--------------|
| -- | -- | -- | -- | PASS |
| -- | -- | -- | -- | PASS |

NOTE:

The amplitude of spurious emissions which are attenuated by more than 20dB below the permissible value has no need to be reported.

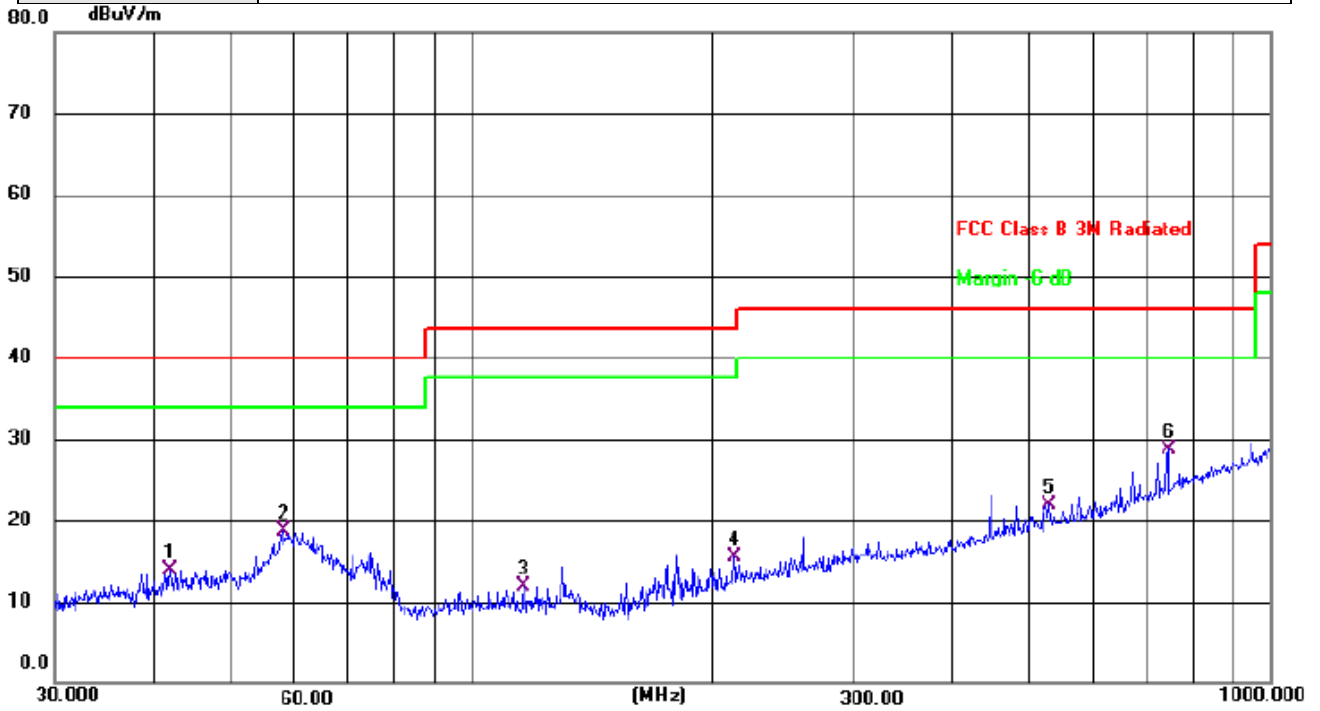
Distance extrapolation factor = $40 \log(\text{specific distance}/\text{test distance})$ (dB);

Limit line = specific limits(dBuv) + distance extrapolation factor.



3.2.7 TEST RESULTS (BETWEEN 30MHZ – 1GHZ)

| | | | |
|----------------|--------------|--------------------|------------|
| Temperature: | 26°C | Relative Humidity: | 54% |
| Pressure: | 1010 hPa | Polarization : | Horizontal |
| Test Voltage : | AC 120V/60Hz | | |
| Test Mode : | Mode 4 | | |



| No. | Mk. | Freq. MHz | Reading Level dBuV | Correct Factor dB | Measure- ment dBuV/m | Limit dB/m | Margin dB | Detector |
|-----|-----|--------------|--------------------------|-------------------------|----------------------------|---------------|--------------|----------|
| 1 | | 41.8596 | 27.71 | -13.72 | 13.99 | 40.00 | -26.01 | QP |
| 2 | | 57.9993 | 31.59 | -12.81 | 18.78 | 40.00 | -21.22 | QP |
| 3 | | 116.1321 | 28.41 | -16.50 | 11.91 | 43.50 | -31.59 | QP |
| 4 | | 213.0151 | 29.75 | -14.22 | 15.53 | 43.50 | -27.97 | QP |
| 5 | | 528.2458 | 29.00 | -7.13 | 21.87 | 46.00 | -24.13 | QP |
| 6 | * | 744.8661 | 31.88 | -3.15 | 28.73 | 46.00 | -17.27 | QP |

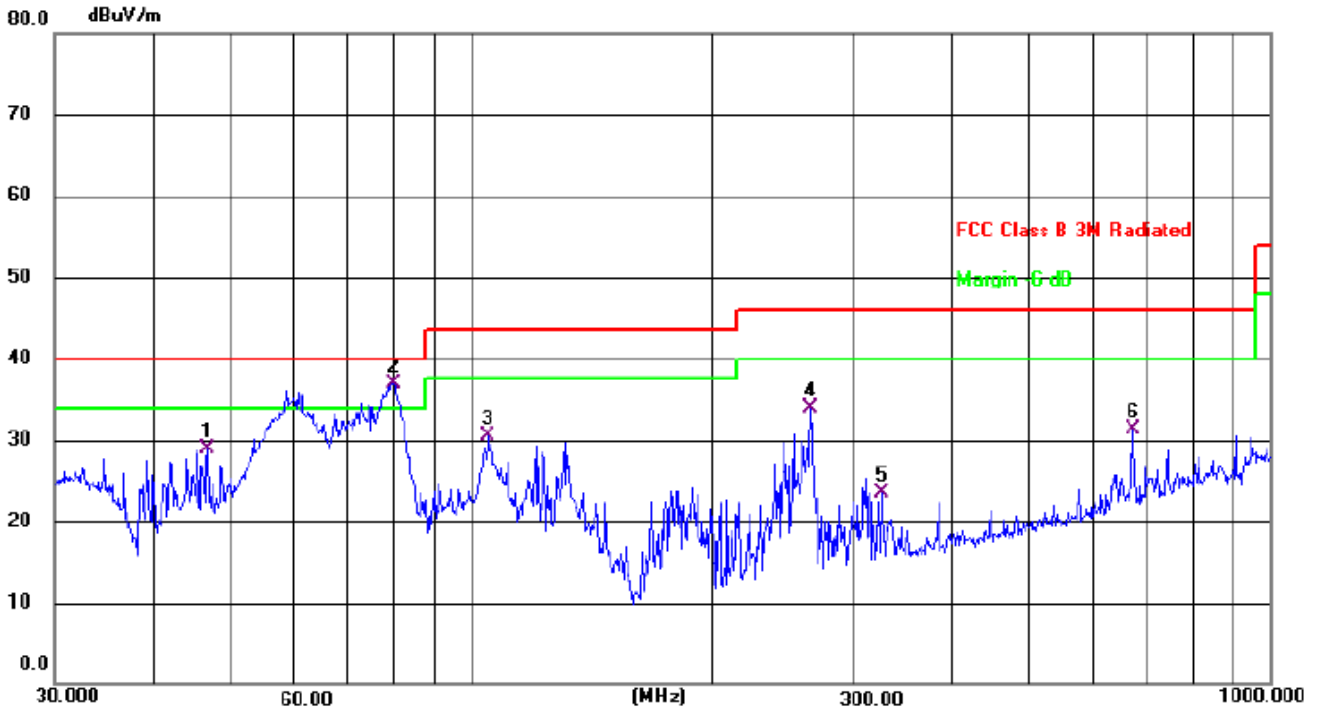
Remark:

Correct Factor = Cable loss + Antenna factor – Preamplifier;

Level = Reading Level + Correct Factor; Margin = Level - Limit;



| | | | |
|----------------|--------------|--------------------|----------|
| Temperature: | 26°C | Relative Humidity: | 54% |
| Pressure: | 1010 hPa | Polarization : | Vertical |
| Test Voltage : | AC 120V/60Hz | | |
| Test Mode : | Mode 4 | | |



| No. Mk. | Freq. MHz | Reading Level dBuV | Correct Factor dB | Measurement dBuV/m | Limit dB/m | Margin dB | Detector |
|---------|-----------|--------------------|-------------------|--------------------|------------|-----------|----------|
| 1 | 46.6663 | 42.29 | -13.42 | 28.87 | 40.00 | -11.13 | QP |
| 2 * | 79.8002 | 54.43 | -17.51 | 36.92 | 40.00 | -3.08 | QP |
| 3 | 104.9032 | 47.07 | -16.54 | 30.53 | 43.50 | -12.97 | QP |
| 4 | 265.6757 | 46.24 | -12.32 | 33.92 | 46.00 | -12.08 | QP |
| 5 | 325.5958 | 34.43 | -10.99 | 23.44 | 46.00 | -22.56 | QP |
| 6 | 672.8444 | 35.79 | -4.48 | 31.31 | 46.00 | -14.69 | QP |

Remark:

Correct Factor = Cable loss + Antenna factor – Preamplifier;

Level = Reading Level + Correct Factor; Margin = Level - Limit;

**3.2.8 TEST RESULTS (1GHZ~25GHZ)**

GFSK

| Polar (H/V) | Frequency | Meter Reading | Pre- amplifier | Cable Loss | Antenna Factor | Emission Level | Limits | Margin | Detector Type |
|---------------------------------|-----------|------------------|-------------------|---------------|-------------------|-------------------|----------|--------|------------------|
| | (MHz) | (dBuV) | (dB) | (dB) | (dB/m) | (dBuV/m) | (dBuV/m) | (dB) | |
| operation frequency:2402 | | | | | | | | | |
| V | 2402.00 | 113.29 | 52.16 | 2.78 | 27.41 | 91.32 | 114 | -22.68 | PK |
| V | 2402.00 | 106.21 | 52.16 | 2.78 | 27.41 | 84.24 | 94 | -9.76 | AV |
| V | 4804.00 | 78.69 | 51.74 | 3.08 | 31.25 | 61.28 | 74 | -12.72 | PK |
| V | 4804.00 | 60.64 | 51.74 | 3.08 | 31.25 | 43.23 | 54 | -10.77 | AV |
| V | 16132.00 | 54.13 | 51.56 | 7.36 | 41.57 | 51.5 | 74 | -22.5 | PK |
| H | 2402.00 | 113.37 | 52.16 | 2.78 | 27.41 | 91.4 | 114 | -22.6 | PK |
| H | 2402.00 | 105.22 | 52.16 | 2.78 | 27.41 | 83.25 | 94 | -10.75 | AV |
| H | 4804.00 | 77.35 | 51.74 | 3.08 | 31.25 | 59.94 | 74 | -14.06 | PK |
| H | 4804.00 | 59.51 | 51.74 | 3.08 | 31.25 | 42.1 | 54 | -11.9 | AV |
| H | 16132.00 | 54.36 | 51.56 | 7.36 | 41.57 | 51.73 | 74 | -22.27 | PK |
| operation frequency:2440 | | | | | | | | | |
| V | 2440.00 | 112.34 | 52.11 | 2.82 | 27.47 | 90.52 | 114 | -23.48 | PK |
| V | 2440.00 | 105.85 | 52.11 | 2.82 | 27.47 | 84.03 | 94 | -9.97 | AV |
| V | 4880.00 | 77.36 | 51.77 | 3.03 | 31.34 | 59.96 | 74 | -14.04 | PK |
| V | 4880.00 | 60.47 | 51.77 | 3.03 | 31.34 | 43.07 | 54 | -10.93 | AV |
| V | 16132.00 | 54.52 | 51.56 | 7.36 | 41.57 | 51.89 | 74 | -22.11 | PK |
| H | 2440.00 | 112.36 | 52.11 | 2.82 | 27.47 | 90.54 | 114 | -23.46 | PK |
| H | 2440.00 | 104.52 | 52.11 | 2.82 | 27.47 | 82.7 | 94 | -11.3 | AV |
| H | 4880.00 | 76.14 | 51.77 | 3.03 | 31.34 | 58.74 | 74 | -15.26 | PK |
| H | 4880.00 | 59.36 | 51.77 | 3.03 | 31.34 | 41.96 | 54 | -12.04 | AV |
| H | 16132.00 | 55.63 | 51.56 | 7.36 | 41.57 | 53 | 74 | -21 | PK |
| operation frequency:2480 | | | | | | | | | |
| V | 2480.00 | 112.14 | 52.23 | 2.86 | 27.44 | 90.21 | 114 | -23.79 | PK |
| V | 2480.00 | 105.36 | 52.23 | 2.86 | 27.44 | 83.43 | 94 | -10.57 | AV |
| V | 4960.00 | 76.25 | 51.69 | 3.05 | 31.39 | 59 | 74 | -15 | PK |
| V | 4960.00 | 61.63 | 51.69 | 3.05 | 31.39 | 44.38 | 54 | -9.62 | AV |
| V | 16132.00 | 53.52 | 51.56 | 7.36 | 41.57 | 50.89 | 74 | -23.11 | PK |
| H | 2480.00 | 112.14 | 52.23 | 2.86 | 27.44 | 90.21 | 114 | -23.79 | PK |
| H | 2480.00 | 106.36 | 52.23 | 2.86 | 27.44 | 84.43 | 94 | -9.57 | AV |
| H | 4960.00 | 78.52 | 51.69 | 3.05 | 31.39 | 61.27 | 74 | -12.73 | PK |
| H | 4960.00 | 58.69 | 51.69 | 3.05 | 31.39 | 41.44 | 54 | -12.56 | AV |
| H | 16132.00 | 53.41 | 51.56 | 7.36 | 41.57 | 50.78 | 74 | -23.22 | PK |

Remark:

1. Emission Level = Meter Reading + Antenna Factor + Cable Loss – Pre-amplifier,
Margin= Emission Level - Limit
2. If peak below the average limit, the average emission was no test.
3. The amplitude of spurious emissions which are attenuated by more than 20dB below the permissible value has no need to be reported.



3.3 RADIATED BAND EMISSION MEASUREMENT

3.3.1 TEST REQUIREMENT:

FCC Part15 C Section 15.209 and 15.205

LIMITS OF RADIATED EMISSION MEASUREMENT (Above 1000MHz)

| FREQUENCY (MHz) | Limit (dBuV/m) (at 3M) | |
|-----------------|------------------------|---------|
| | PEAK | AVERAGE |
| Above 1000 | 74 | 54 |

Notes:

- (1) The limit for radiated test was performed according to FCC PART 15C.
- (2) The tighter limit applies at the band edges.
- (3) Emission level (dBuV/m)=20log Emission level (uV/m).

| Spectrum Parameter | Setting |
|---------------------------------------|--|
| Attenuation | Auto |
| Start Frequency | 2300MHz |
| Stop Frequency | 2520MHz |
| RB / VB (emission in restricted band) | 1 MHz / 1 MHz for Peak, 1 MHz / 10Hz for Average |

3.3.2 TEST PROCEDURE

Above 1GHz test procedure as below:

- a. 1. The EUT was placed on the top of a rotating table 1.5 meters above the ground at a 3 meter camber. The table was rotated 360 degrees to determine the position of the highest radiation.
- b. The EUT was set 3 meters away from the interference-receiving antenna, which was mounted on the top of a variable-height antenna tower.
- c. The antenna height is varied from one meter to four meters above the ground to determine the maximum value of the field strength. Both horizontal and vertical polarizations of the antenna are set to make the measurement.
- d. For each suspected emission, the EUT was arranged to its worst case and then the antenna was tuned to heights from 1 meter to 4 meters and the rota table was turned from 0 degrees to 360 degrees to find the maximum reading.
- e. The test-receiver system was set to Peak Detect Function and Specified Bandwidth with Maximum Hold Mode.
- f. If the emission level of the EUT in peak mode was 10dB lower than the limit specified, then testing could be stopped and the peak values of the EUT would be reported. Otherwise the emissions that did not have 10dB margin would be re-tested one by one using peak, quasi-peak or average method as specified and then reported in a data sheet.
- g. Test the EUT in the lowest channel,the Highest channel

Note:

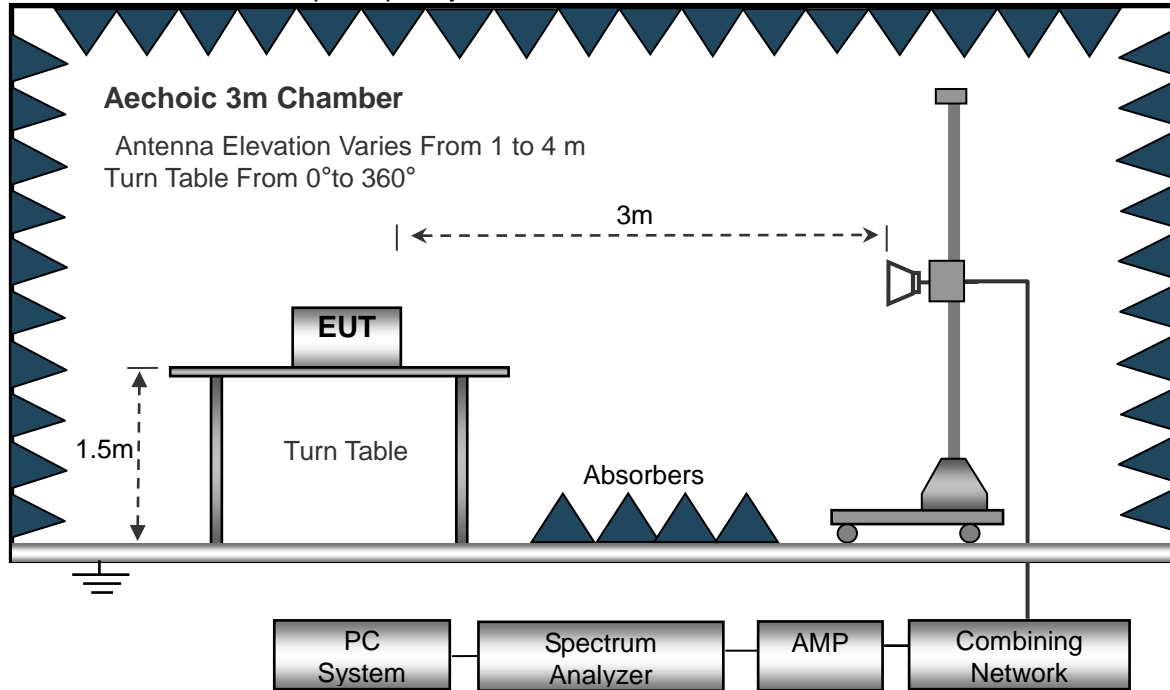
Both horizontal and vertical antenna polarities were tested and performed pretest to three orthogonal axis. The worst case emissions were reported

3.3.3 DEVIATION FROM TEST STANDARD

No deviation

3.3.4 TEST SETUP

Radiated Emission Test-Up Frequency Above 1GHz



3.3.5 EUT OPERATING CONDITIONS

The EUT tested system was configured as the statements of 2.3 Unless otherwise a special operating condition is specified in the follows during the testing.

**3.3.6 TEST RESULT**

GFSK

| Polar (H/V) | Frequency | Meter Reading | Pre-amplifier | Cable Loss | Antenna Factor | Emission Level | Limits | Margin | Detector Type |
|---------------------------------|-----------|---------------|---------------|------------|----------------|----------------|----------|--------|---------------|
| | (MHz) | (dBuV) | (dB) | (dB) | (dB/m) | (dBuV/m) | (dBuV/m) | (dB) | |
| operation frequency:2402 | | | | | | | | | |
| V | 2390.00 | 76.63 | 52.12 | 2.73 | 27.38 | 54.62 | 74 | -19.38 | PK |
| V | 2390.00 | 65.52 | 52.12 | 2.73 | 27.38 | 43.51 | 54 | -10.49 | AV |
| V | 2400.00 | 76.61 | 52.16 | 2.78 | 27.41 | 54.64 | 74 | -19.36 | PK |
| V | 2400.00 | 64.85 | 52.16 | 2.78 | 27.41 | 42.88 | 54 | -11.12 | AV |
| H | 2390.00 | 76.36 | 52.12 | 2.73 | 27.38 | 54.35 | 74 | -19.65 | PK |
| H | 2390.00 | 65.41 | 52.12 | 2.73 | 27.38 | 43.4 | 54 | -10.6 | AV |
| H | 2400.00 | 76.39 | 52.16 | 2.78 | 27.41 | 54.42 | 74 | -19.58 | PK |
| H | 2400.00 | 65.55 | 52.16 | 2.78 | 27.41 | 43.58 | 54 | -10.42 | AV |

| Polar (H/V) | Frequency | Meter Reading | Pre-amplifier | Cable Loss | Antenna Factor | Emission Level | Limits | Margin | Detector Type |
|---------------------------------|-----------|---------------|---------------|------------|----------------|----------------|----------|--------|---------------|
| | (MHz) | (dBuV) | (dB) | (dB) | (dB/m) | (dBuV/m) | (dBuV/m) | (dB) | |
| operation frequency:2480 | | | | | | | | | |
| V | 2483.50 | 75.26 | 52.23 | 2.86 | 27.44 | 53.33 | 74 | -20.67 | PK |
| V | 2483.50 | 66.58 | 52.23 | 2.86 | 27.44 | 44.65 | 54 | -9.35 | AV |
| V | 2500.00 | 75.41 | 52.26 | 2.88 | 27.49 | 53.52 | 74 | -20.48 | PK |
| V | 2500.00 | 65.33 | 52.26 | 2.88 | 27.49 | 43.44 | 54 | -10.56 | AV |
| H | 2483.50 | 75.19 | 52.23 | 2.86 | 27.44 | 53.26 | 74 | -20.74 | PK |
| H | 2483.50 | 64.74 | 52.23 | 2.86 | 27.44 | 42.81 | 54 | -11.19 | AV |
| H | 2500.00 | 75.36 | 52.26 | 2.88 | 27.49 | 53.47 | 74 | -20.53 | PK |
| H | 2500.00 | 66.41 | 52.26 | 2.88 | 27.49 | 44.52 | 54 | -9.48 | AV |

Remark:

1. Emission Level = Meter Reading + Antenna Factor + Cable Loss – Pre-amplifier,
Margin= Emission Level - Limit
2. If peak below the average limit, the average emission was no test.
3. The amplitude of spurious emissions which are attenuated by more than 20dB below the permissible value has no need to be reported.



4. BANDWIDTH TEST

4.1 APPLIED PROCEDURES / LIMIT

| FCC Part15 (15.215) , Subpart C | |
|---------------------------------|-----------|
| Section | Test Item |
| 15.215 | Bandwidth |

4.1.1 TEST PROCEDURE

1. Set RBW = 30 kHz.
2. Set the video bandwidth (VBW) ≥RBW.
3. Detector = Peak.
4. Trace mode = max hold.
5. Sweep = auto couple.
6. Allow the trace to stabilize.
7. Measure the maximum width of the emission that is constrained by the frequencies associated with the two outermost amplitude points (upper and lower frequencies) that are attenuated by 20 dB relative to the maximum level measured in the fundamental emission.

4.1.2 DEVIATION FROM STANDARD

No deviation.

4.1.3 TEST SETUP



4.1.4 EUT OPERATION CONDITIONS

The EUT tested system was configured as the statements of 2.3 Unless otherwise a special operating condition is specified in the follows during the testing.

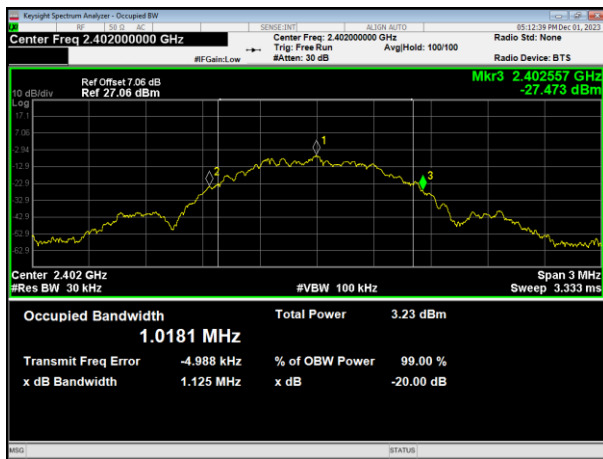


4.1.5 TEST RESULTS

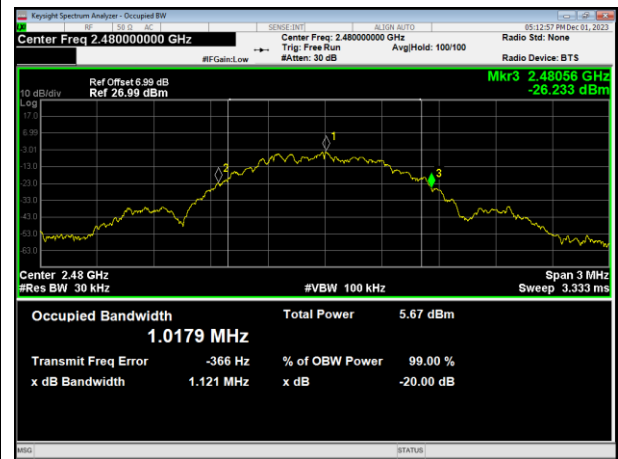
| | | | |
|--------------|---------------------------|--------------------|--------------|
| Temperature: | 25°C | Relative Humidity: | 60% |
| Pressure: | 1012 hPa | Test Voltage : | AC 120V/60Hz |
| Test Mode : | TX Mode /CH00, CH19, CH39 | | |

| | Frequency (MHz) | 20dB Bandwidth (MHz) | Result |
|------|-----------------|----------------------|--------|
| GFSK | 2402 | 1.125 | Pass |
| | 2440 | 1.127 | Pass |
| | 2480 | 1.121 | Pass |

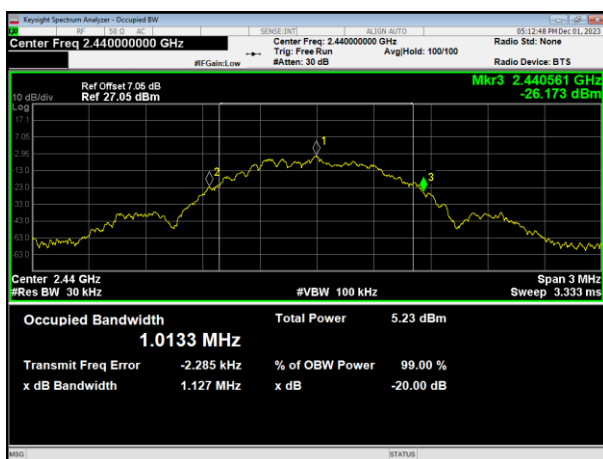
GFSK



2402MHz



2480MHz



2440MHz



5. ANTENNA REQUIREMENT

5.1 STANDARD REQUIREMENT

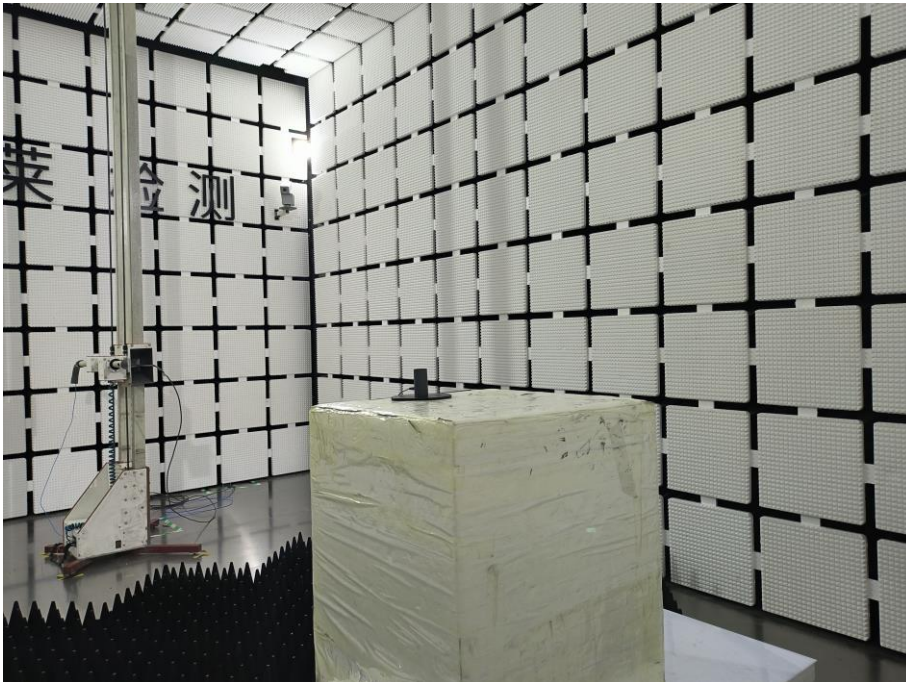
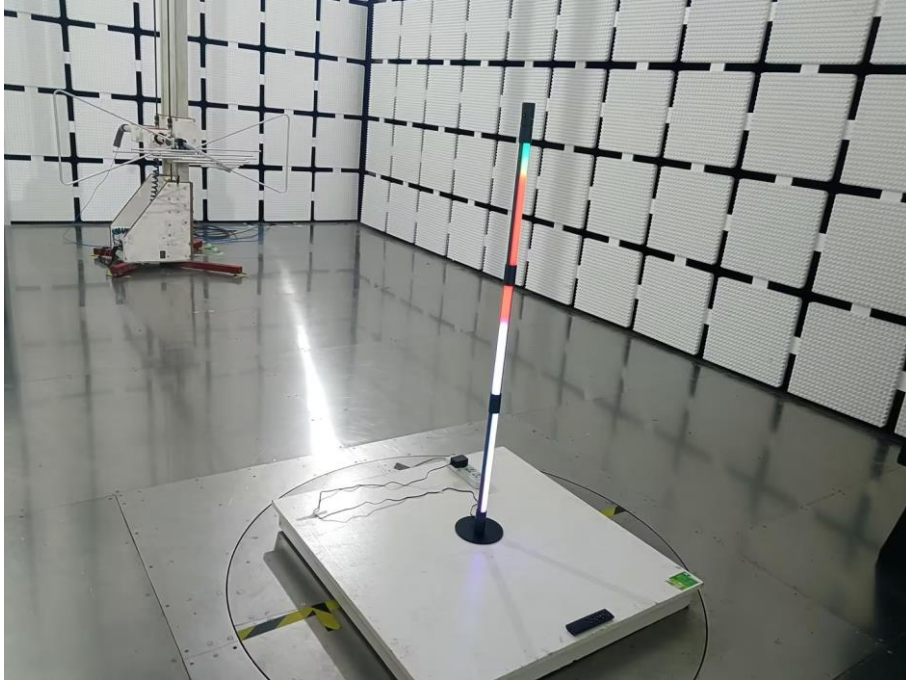
15.203 requirement: For intentional device, according to 15.203: an intentional radiator shall be designed to ensure that no antenna other than that furnished by the responsible party shall be used with the device.

5.2 EUT ANTENNA

The EUT antenna is PCB antenna, It comply with the standard requirement.

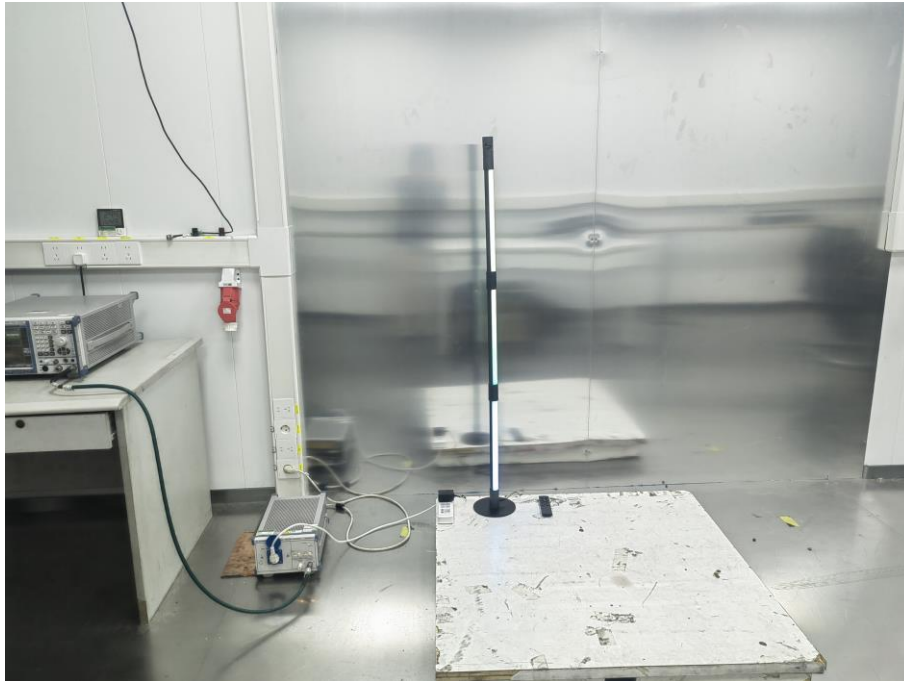
6. TEST SEUUP PHOTO

Radiated Measurement Photos



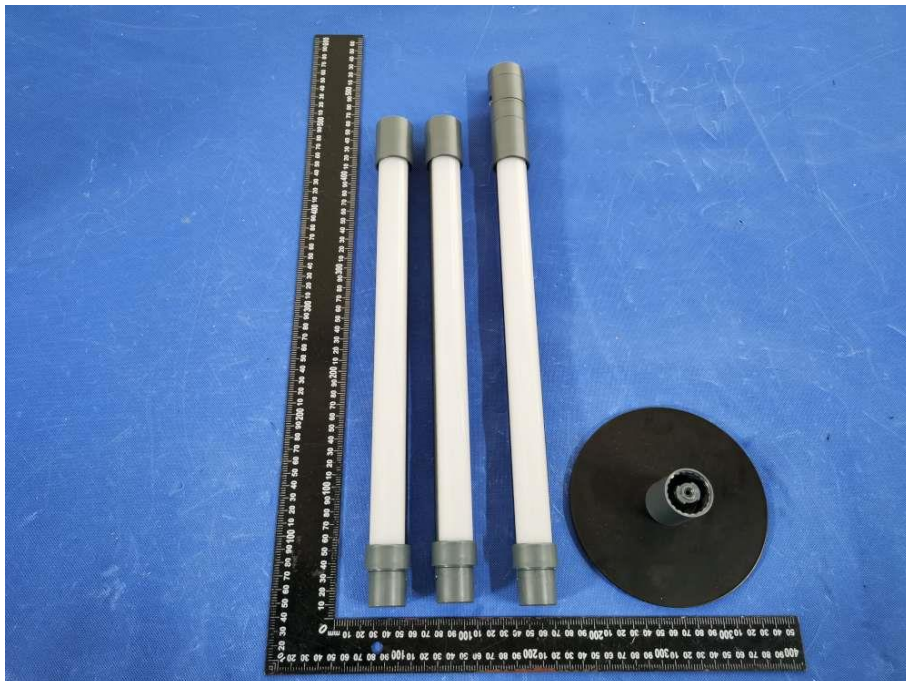
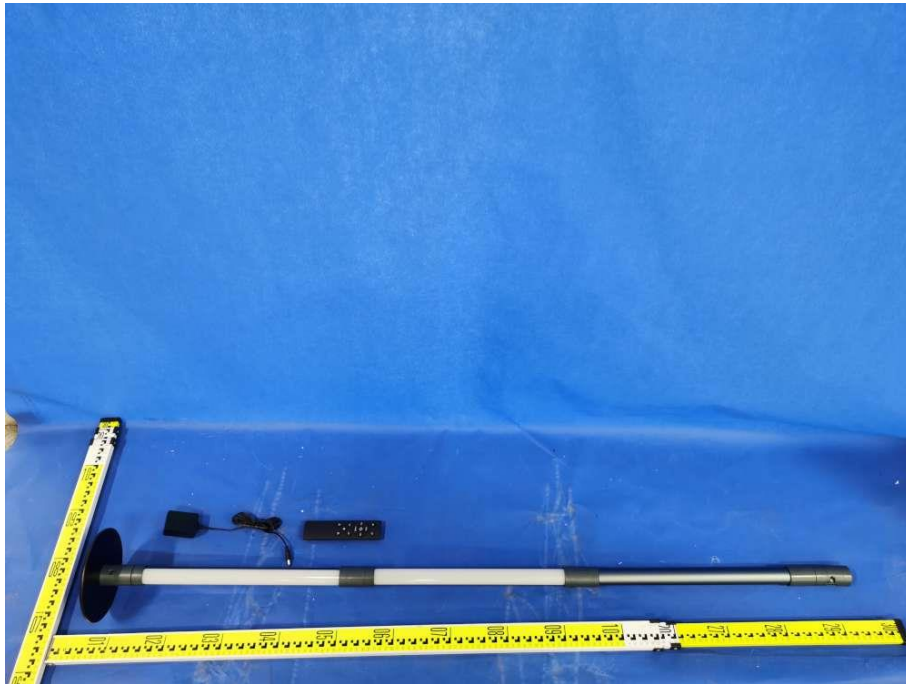


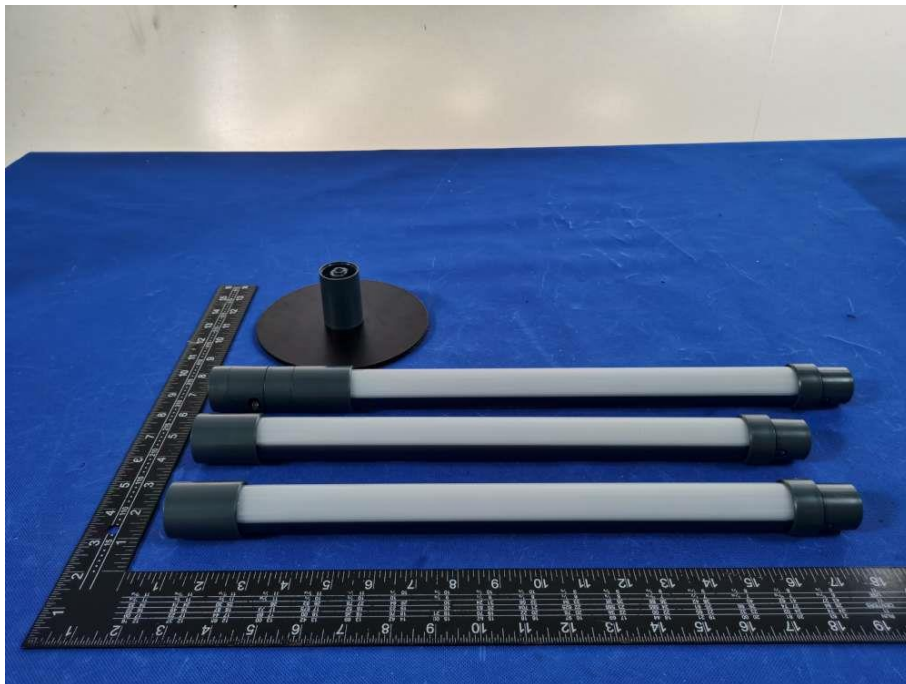
Conducted Measurement Photos

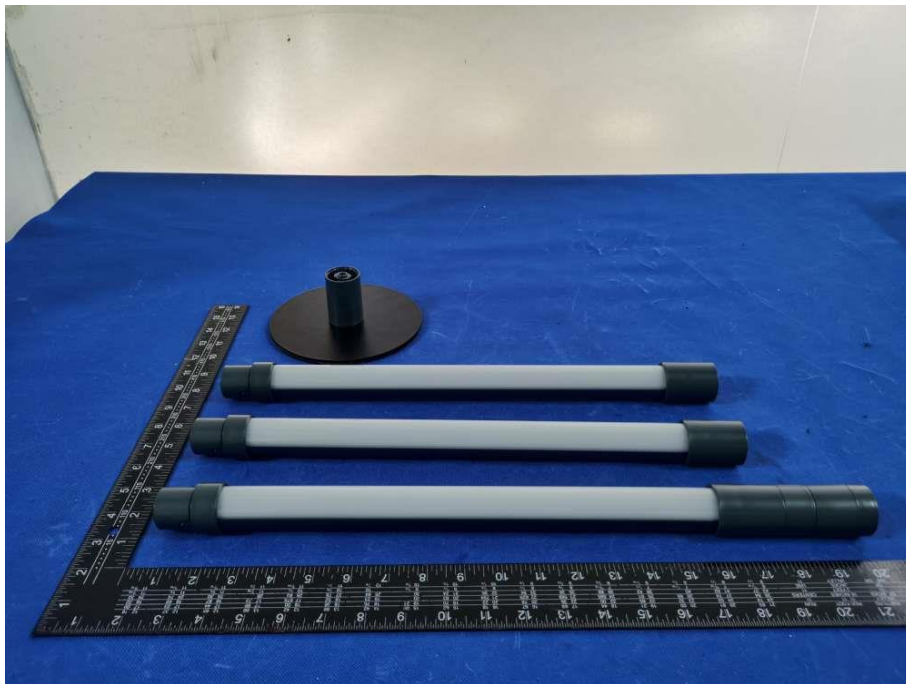


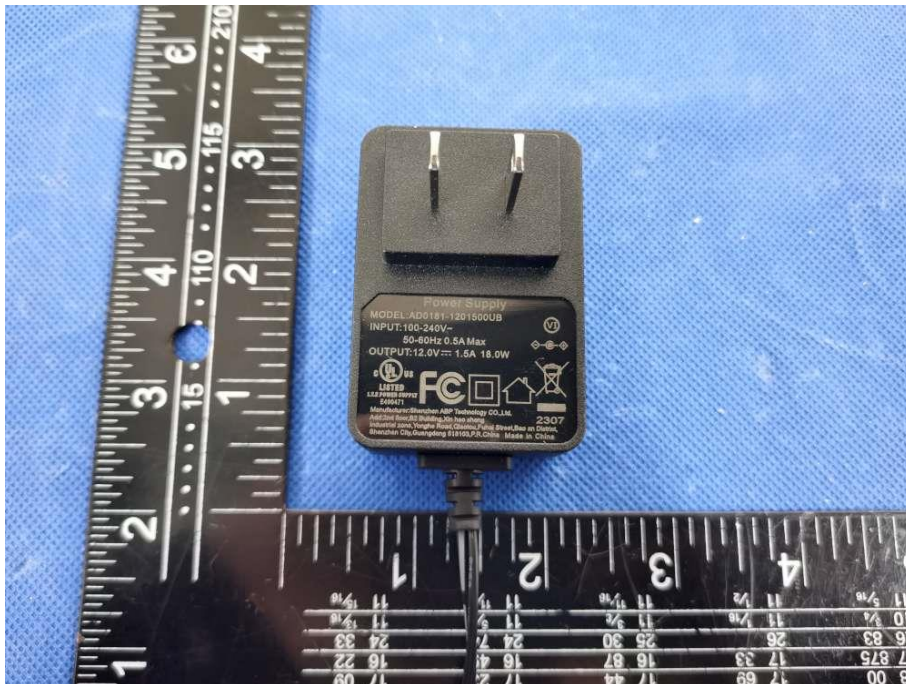
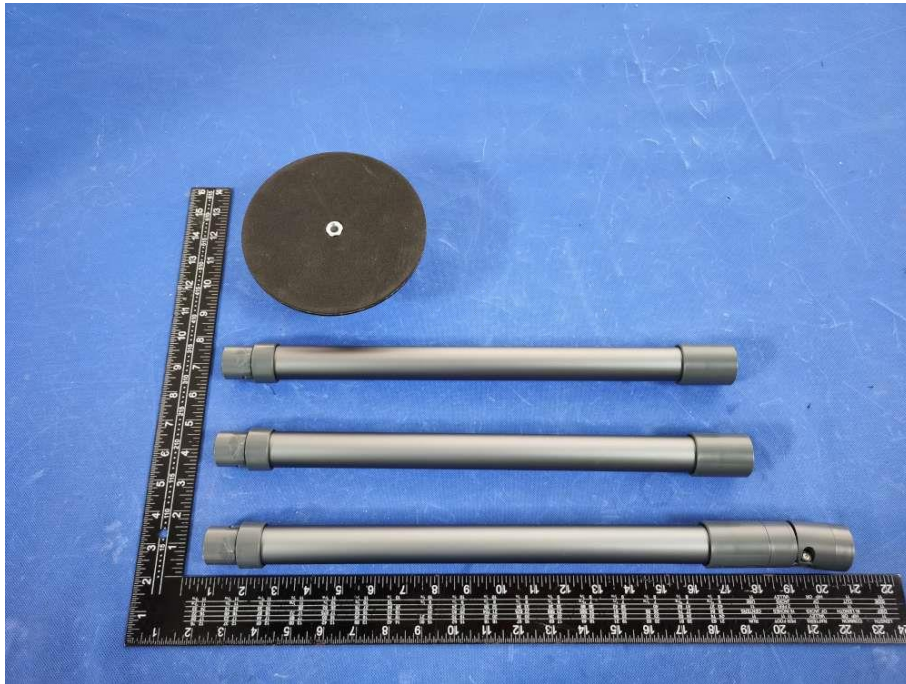


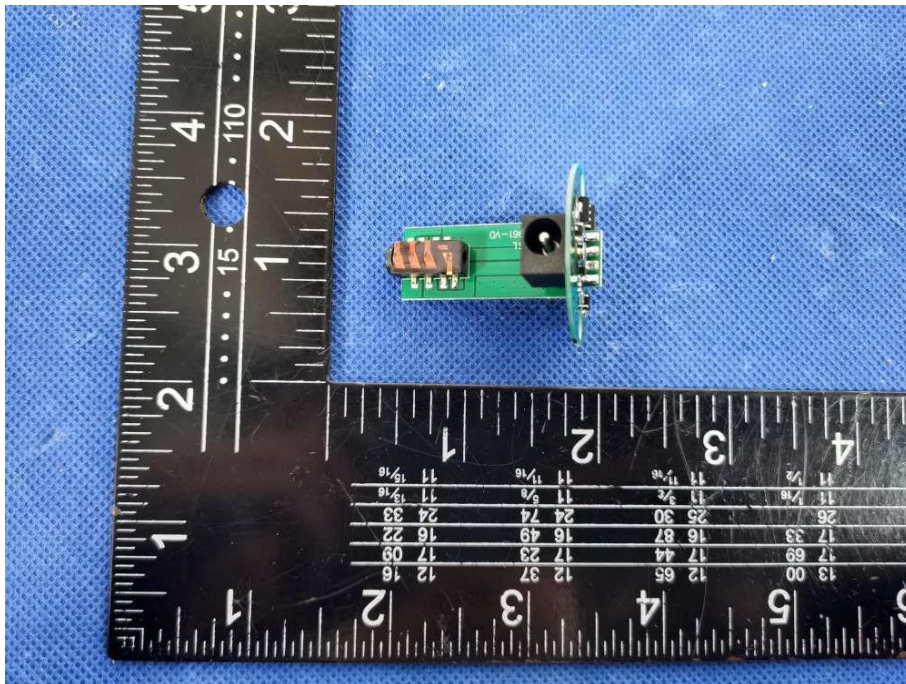
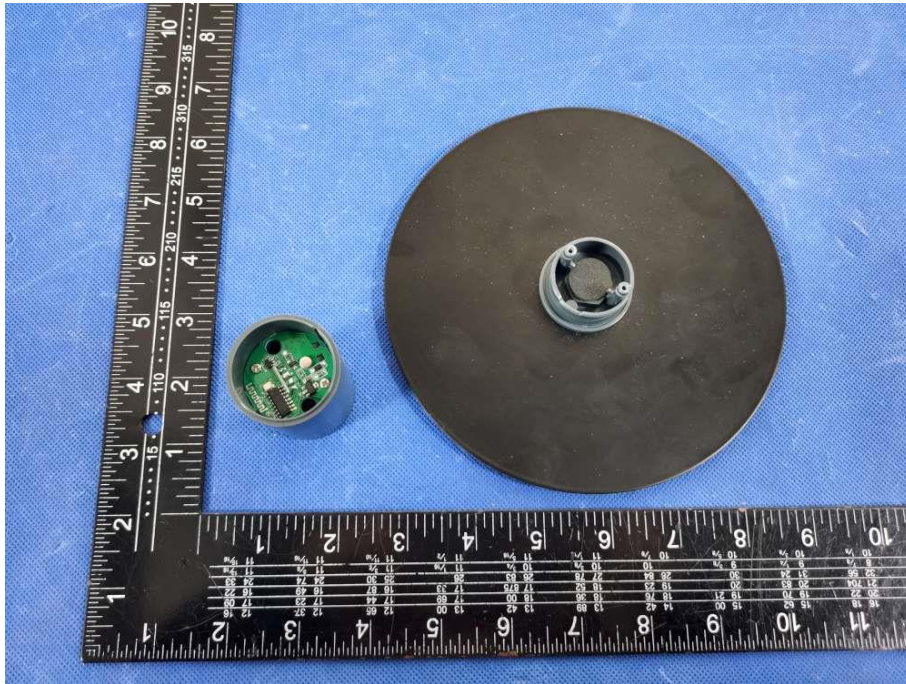
7. EUT PHOTO

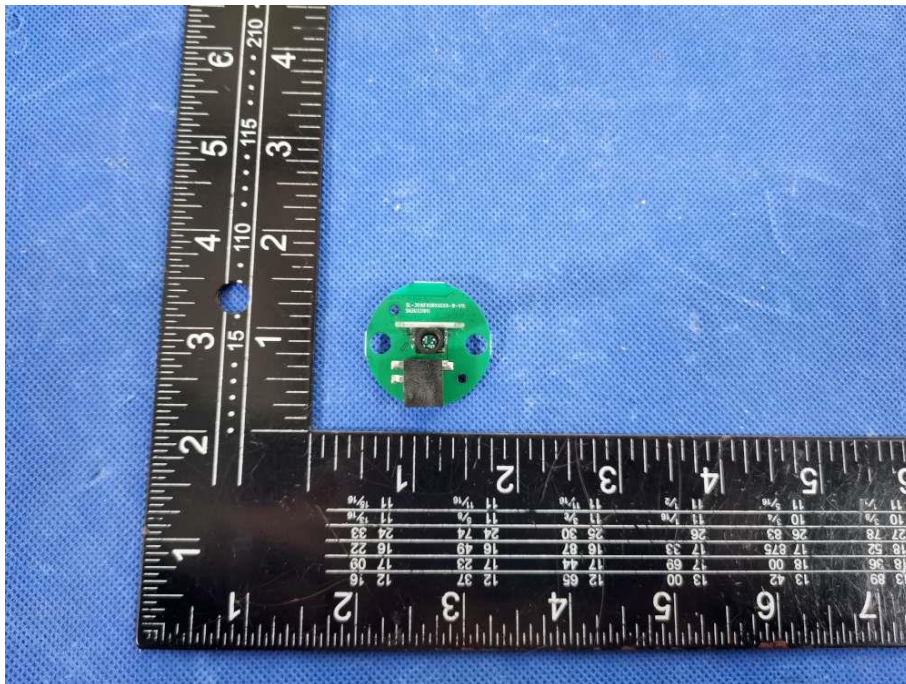
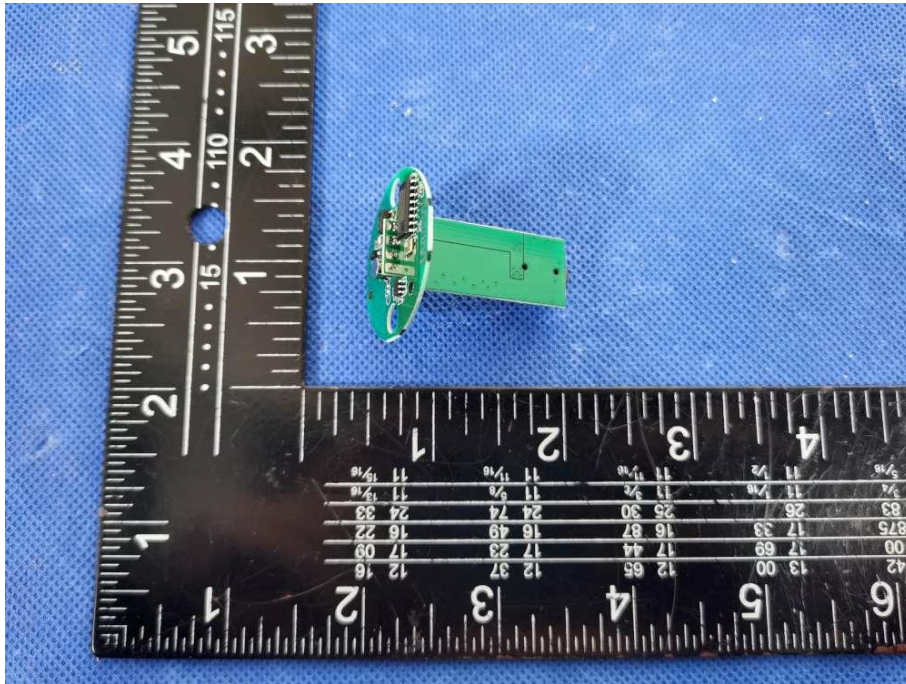


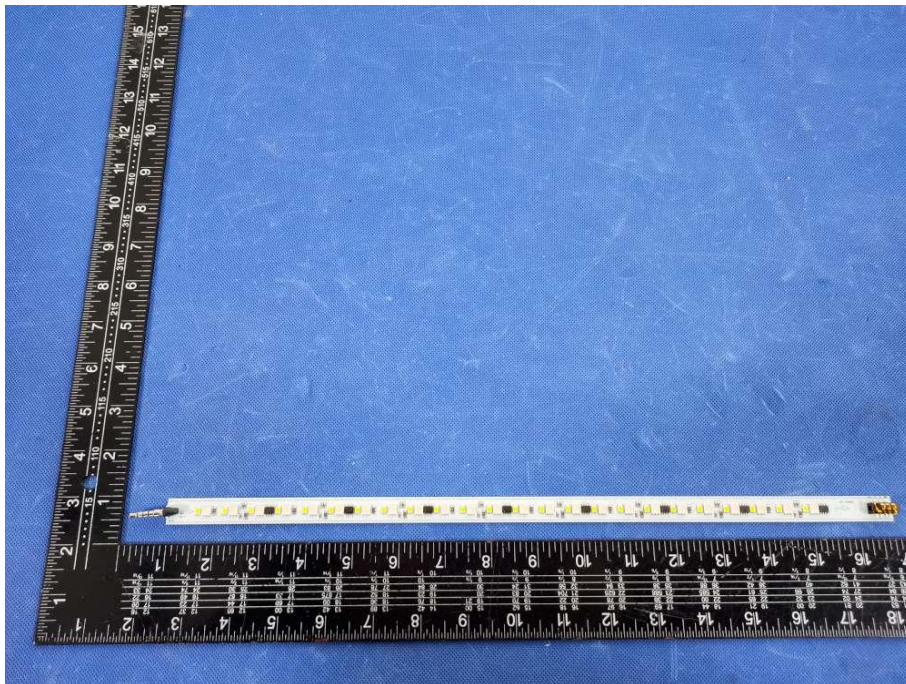
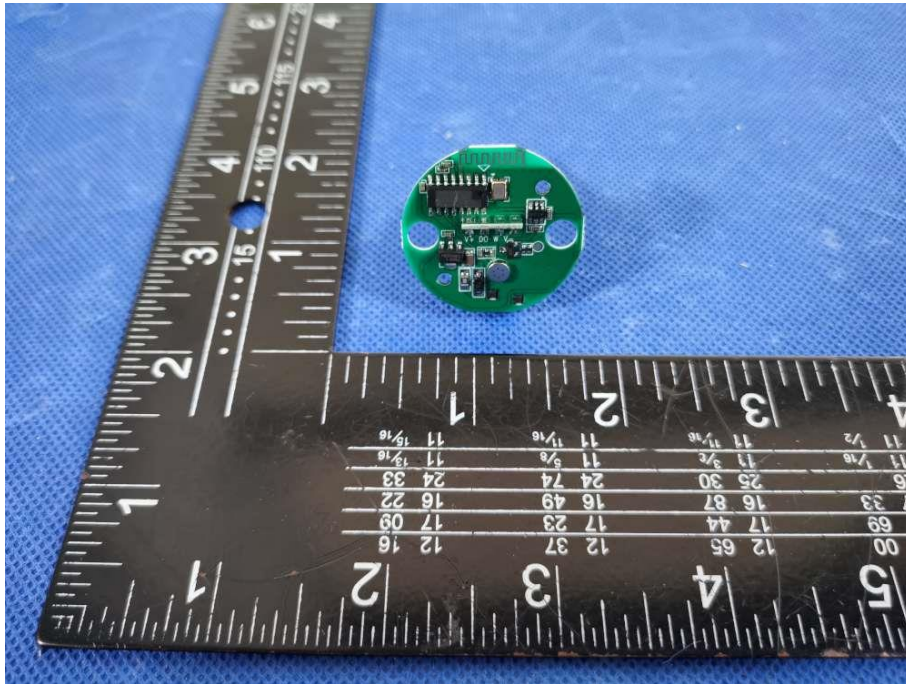


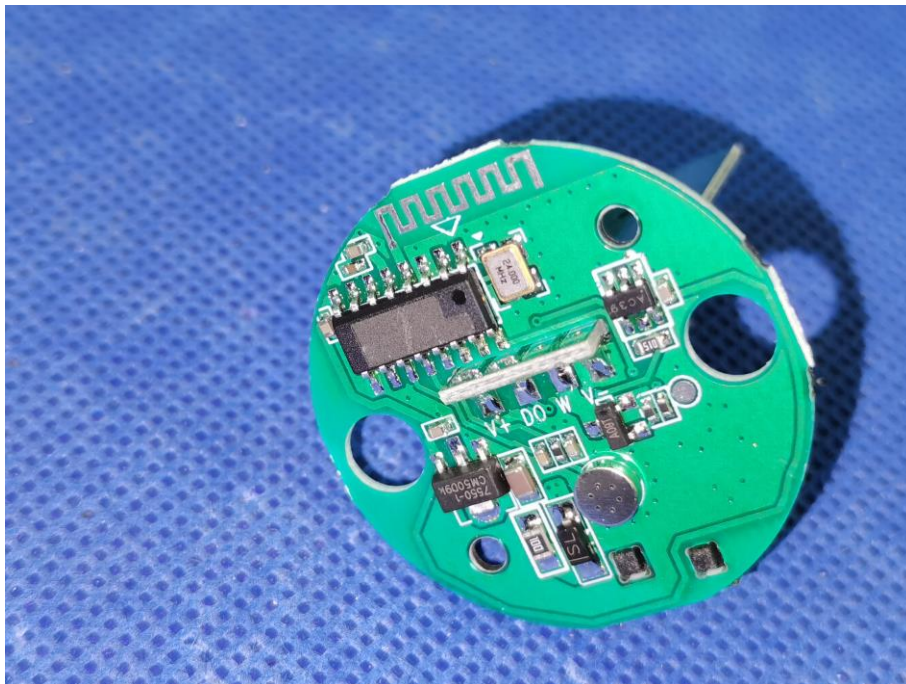
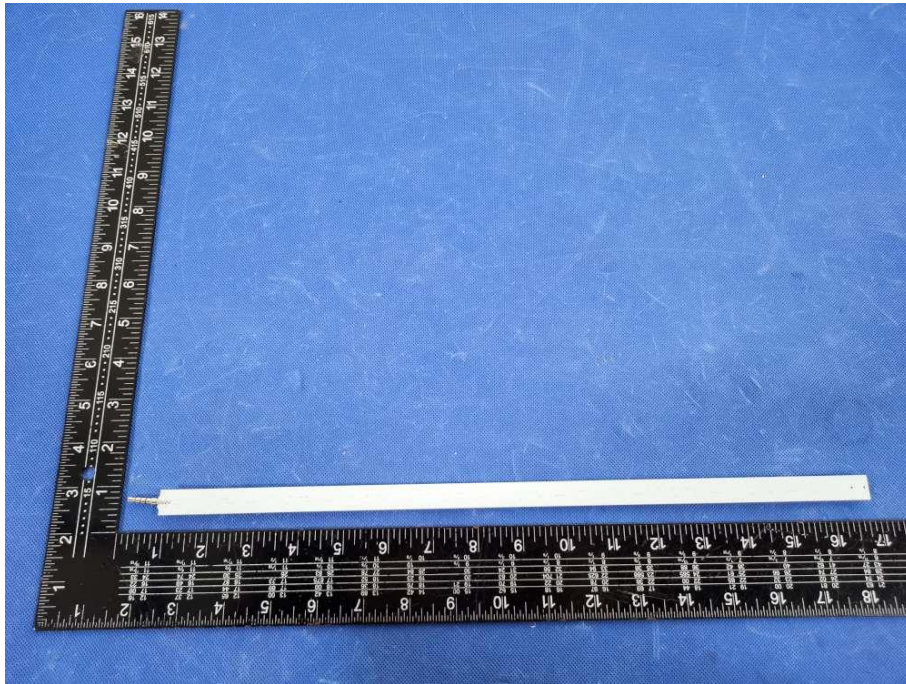












***** END OF REPORT *****