



芯海科技
CHIPSEA

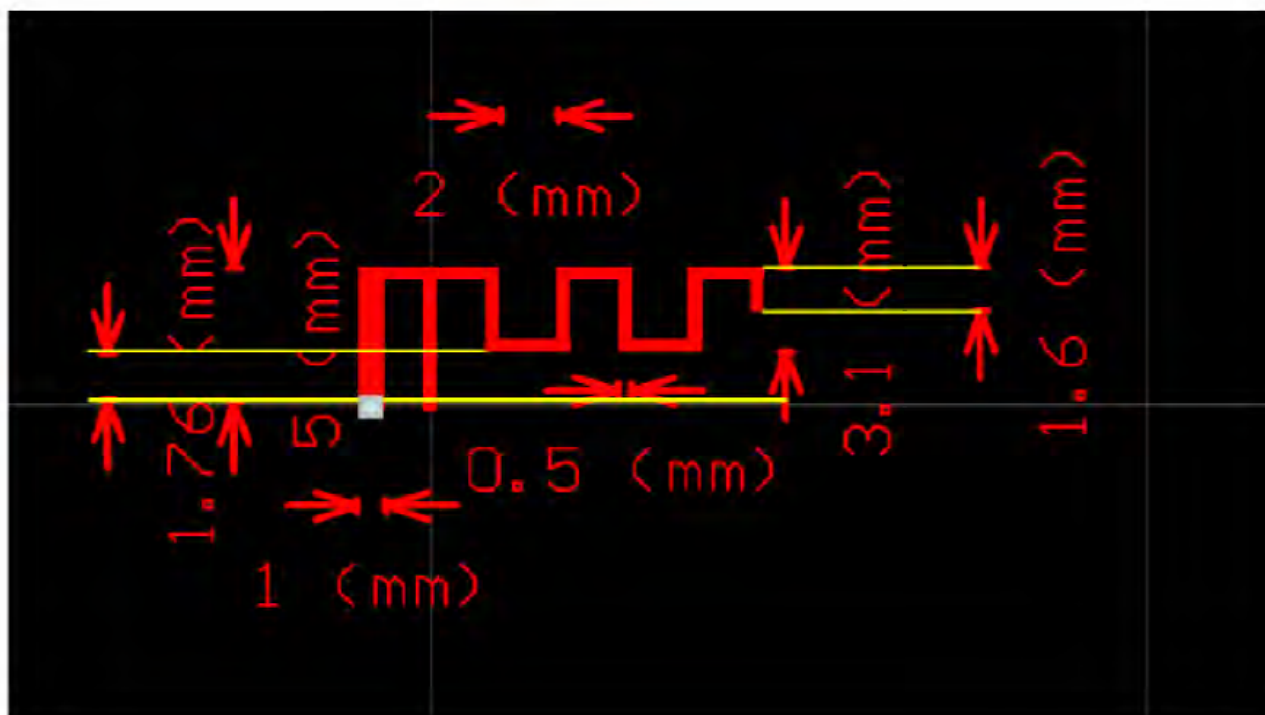
天线规格

深圳市芯海科技有限公司

版权所有 不得复制

1: Antenna Description

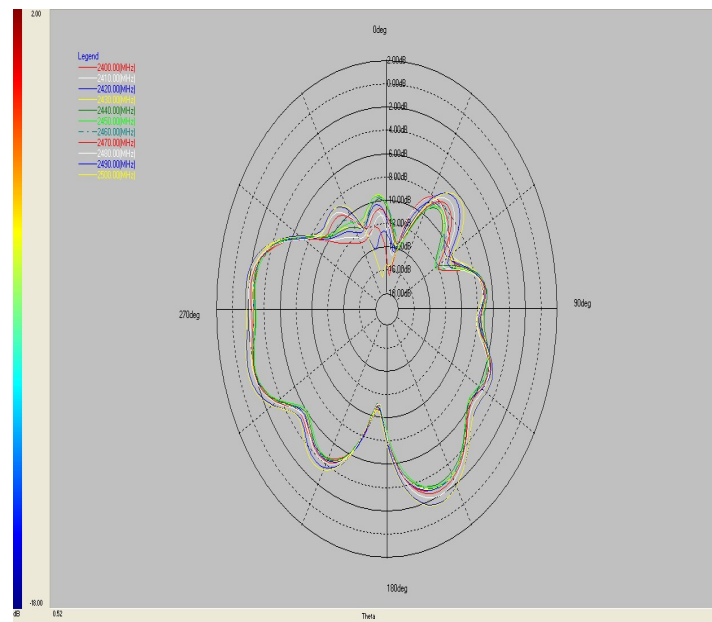
Antenna Type	Microtrip Antenna
Antenna peak gain	1.08dBi
Frequency range	2.402GHz~2.480GHz
Connect type	Direct Connect



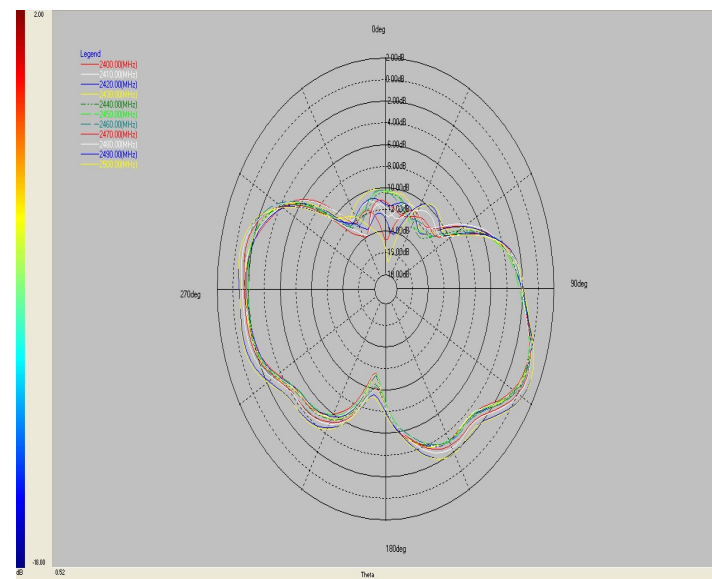
3. 2D Radiation characteristics of antenna

characteristics of antenna(VEC 03)

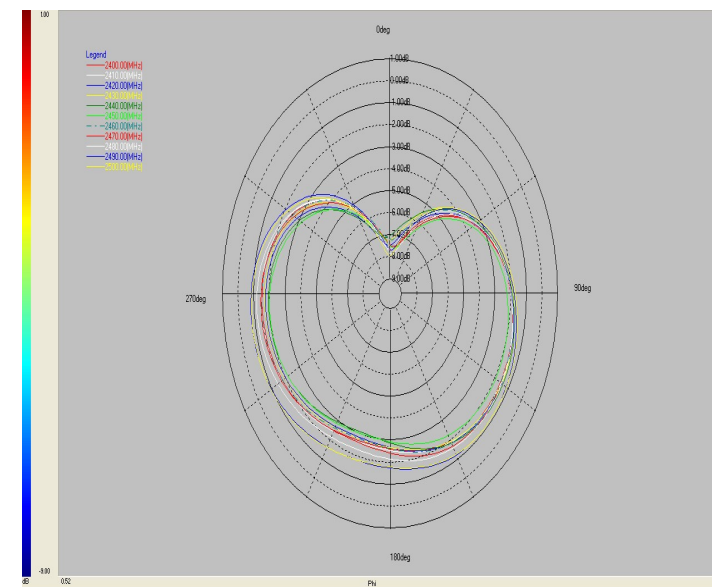
PHI 0°



PHI90°



THETA90°



Frequency VNA (MHz)	Gain (Peak) (dBi)
2400MHz	0.0403503
2410MHz	0.0886264
2420MHz	0.267381
2430MHz	0.193012
2440MHz	0.26366
2450MHz	0.0723139
2460MHz	0.36895
2470MHz	0.551525
2480MHz	0.640702
2490MHz	1.05232
2500MHz	1.08443