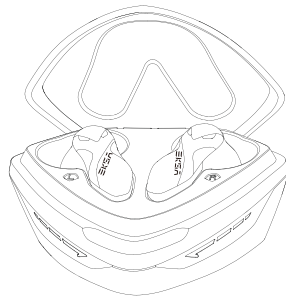


EKSA

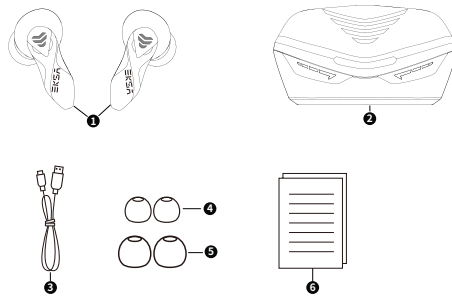


GT1

User Manual

EN

Package Contents



- | | |
|------------------------------|----------------------------|
| 1. EKSAs GT1 Earbuds | 4. Eartips: Size S x1 Pair |
| 2. Charging Case | 5. Eartips: Size L x1 Pair |
| 3. USB Type-C Charging Cable | 6. User Manual |

Specifications

Product Name: True Wireless Earphone

Bluetooth Version: V5.0

Low Latency : 38ms

Speaker Size: Φ 10mm

Operation Range: \geq 10m

Impedance: $32\Omega \pm 10\%$

Sensitivity: 101dB \pm 3dB

Frequency: 20Hz-20kHz

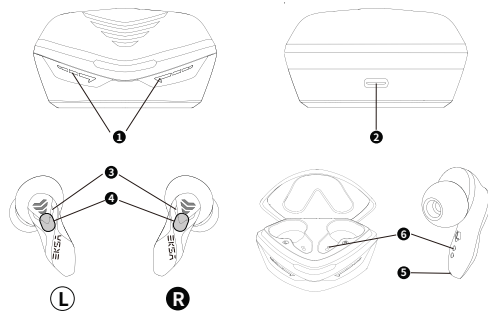
Earbuds Battery: 50mAh

Charging Case Battery: 500mAh

Playing Time: 6hrs

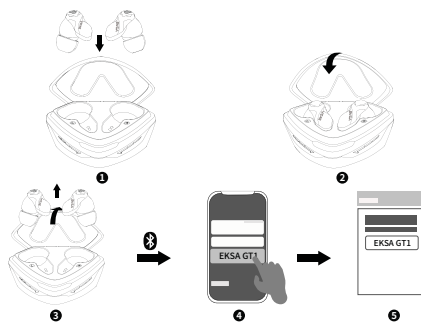
Charging Time: 1.5hrs

Overview



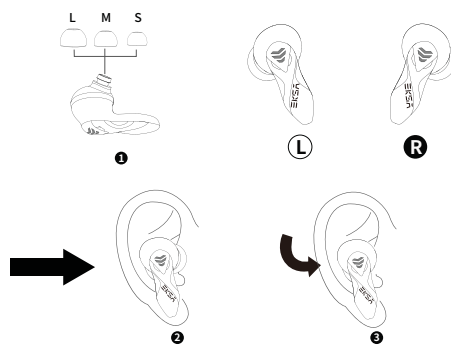
- | | |
|--------------------------------|--------------------------------|
| 1. Charging Case LED Indicator | 4. Multi-Function Touch Button |
| 2. Type-C Charging Port | 5. Microphone |
| 3. EKS GT1 LED Indicator | 6. Wireless Charging Pins |

How to pair?



1. Put EKSA GT1 earbuds into the charging case.
2. Close the charging case.
3. Open the charging case and take the earbuds out, EKSA GT1 will automatically start pairing mode.
4. Turn on your device's Bluetooth and pair your device with EKSA GT1.
5. EKSA GT1 earbuds will be connected.

How to wear EKSA GT1 earbuds properly ?



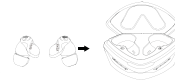
1. Choose the proper pair of earbuds. _____
2. Put EKSA GT1 into your ears. _____
3. Adjust the earbuds to your comfort. _____

Control

**Let's Get Started!
On/Off & Pairing**



Open the case and take out the earbuds
Power on automatically



Put the earbuds back and close the charging case.
Power off automatically



Press for 5secs
Power on manually



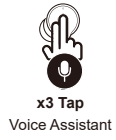
Press for 5secs (pause music play)
Power off manually



Press for 10secs (in shutdown mode)
Clear pairing



Enjoy Your Music



x3 Tap
Voice Assistant



x2 Tap
Music Switch
(left for previous song
right for next)



Press for 2secs
Music/Game Mode Switch



x1 Tap
Play/Pause



Take a Clear Phone Call



x1 Tap
Answer Call

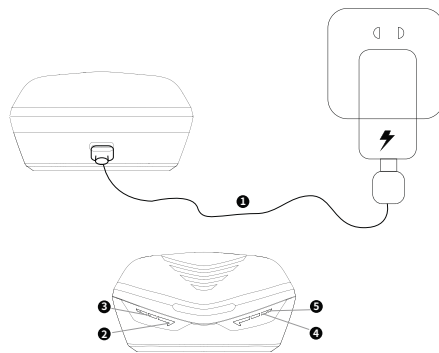


Press for 2secs
Reject Incoming Call



x1 Tap
End Call

Charging

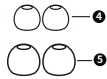
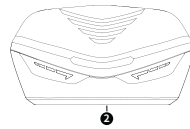
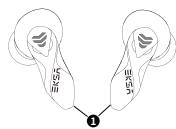


Output ①: DC 5V

Charging Indication: ③ 100%-75% ④ 75%-50% ⑤ 50%-25% ⑥ 25%-0

JP

パッケージリスト

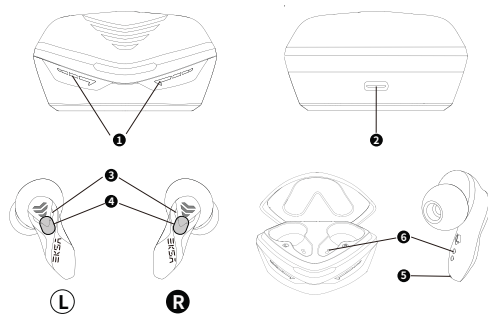


- | | |
|-----------------------|---------------------|
| 1. EKSA GT1 ワイヤレスイヤホン | 4. イヤーピース: サイズS×1ペア |
| 2. 充電ケース | 5. イヤーピース: サイズL×1ペア |
| 3. USB-C 充電用ケーブル | 6. 取扱説明書 |

技術仕様

モデル: True Wireless Earphone
Bluetoothバージョン: V5.0
低遅延性: 38ms
スピーカーサイズ: $\Phi 10\text{mm}$
通信距離: $\geq 10\text{m}$
インピーダンス: $32\Omega \pm 10\%$
感度: $101\text{dB} \pm 3\text{dB}$
周波数特性: 20Hz-20kHz
イヤホンバッテリー: 50mAh 3.7V
充電ケースバッテリー: 500mAh 3.7V
再生時間: 6hrs
充電時間: 1.5hrs

概要



1.充電ケースLEDインジケータ

4.タッチエリア

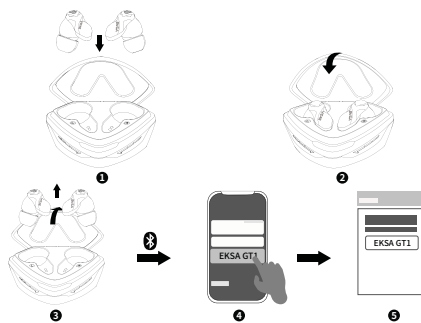
2.Type-C充電ポート

5.マイク

3.イヤホンLEDインジケータ

6.金属接点(充電用)

初回ペアリング方法



1. 本体を充電ケースに入れます

2. 蓋を閉める

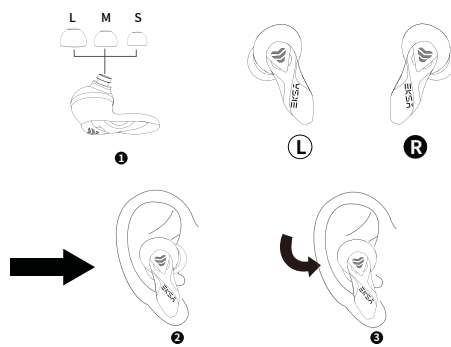
3. 再び充電ケースから本体を取り出すと、EKSA GT1は自動的にオンにし、左右イヤホンはお互いに接続します。

4. お使いの端末のBluetooth機能をオンにし、「EKSA GT1」を選択します。

5. 「接続済み」が表示されると、ペアリングが完了。

(次回のご使用から、本製品の充電ケースから出してから、前回接続された端末に自動的に再接続されます。)

装着説明



- 1.適切なイヤピースを選択してください
- 2.イヤホンを耳穴に優しく収まるように差し込んでください
- 3.ぴったり合うまで調整する

操作方法

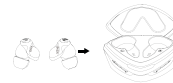
オン/オフ & ペアリング



蓋を開けて、本体を
取り出す
自動的に電源オン



5秒間押し続ける
電源オン



本体を充電ケースに戻
して蓋を閉める
自動的に電源オフ



5秒間押し続ける
(音楽再生を停止)
電源オフ



10秒間押し続ける
(電源オフの場合に)
ペアリングを解除



音楽を楽しむ



3回タップ
音声アシスタントの起動



2回タップ
音楽の切り替え
(左は前の曲 右は次の曲)



2秒間押し続ける
音楽/ゲームモード切替



1回タップ
音楽再生/一時停止



よりクリアな通話



1回タップ
着信応答

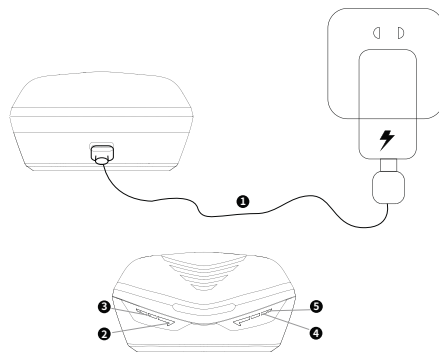


2秒間押し続ける
着信拒否



1回タップ
通話終了

充電



出力 ❶: DC 5V
充電インジケータ: ❷ 100%-75% ❸ 75%-50% ❹ 50%-25% ❺ 25%-0

Limited Warranty/保証書

EKSA offers a one-year limited warranty for this product. We will repair or replace any defective products free of charge. Feel free to contact us:

EKSAは、この製品に1年間の保証を提供します。欠陥のある製品は、無償で修理または交換いたします。万が一不具合がありましたら以下の連絡方法をお気軽にお問い合わせください。

Global:

☎ +85269404955(Mon to Fri 9:00 am-6:30 pm, UTC +8 HKT)

✉ info@eksa.net

🌐 www.eksa.net/warranty

India:

☎ +918929369620(Mon to Fri 9:30 am-5:30 pm, IST)

✉ support@eksa.co.in

FCC Warning

This device complies with part 15 of the FCC Rules. Operation is subject to the following two conditions:(1) This device may not cause harmful interference, and (2) this device must accept any interference received, including interference that may cause undesired operation.

Any Changes or modifications not expressly approved by the party responsible for compliance could void the user's authority to operate the equipment.

This equipment has been tested and found to comply with the limits for a Class B digital device, pursuant to part 15 of the FCC Rules. These limits are designed to provide reasonable protection against harmful interference in a residential installation. This equipment generates uses and can radiate radio frequency energy and, if not installed and used in accordance with the instructions, may cause harmful interference to radio communications. However, there is no guarantee that interference will not occur in a particular installation. If this equipment does cause harmful interference to radio or television reception, which can be determined by turning the equipment off and on, the user is encouraged to try to correct the interference by one or more of the following measures:

- Reorient or relocate the receiving antenna.
- Increase the separation between the equipment and receiver.
- Connect the equipment into an outlet on a circuit different from that to which the receiver is connected.
- Consult the dealer or an experienced radio/TV technician for help.

FCC RF exposure statement:
The device has been evaluated to meet general RF exposure requirement. The device can be used in portable exposure condition without restriction.

FCC ID: 2A25A-GT1

Manufacturer's Name: YI ZHAO (SHENZHEN) CO., LIMITED

Manufacturer's Address: 6th Floor, T3 Creative Building, Shenzhen Colorful Huiwei Cultural And Creative Expo City, No.5010 Baoan Avenue, Caowei Community, Hangcheng Street, Baoan District, Shenzhen.

Product name: True Wireless Earphone

Model number: GT1

Operating Temperature: -20°C to 55°C

EU compliance statement: YI ZHAO (SHENZHEN) CO., LIMITED. Hereby declares that this device in compliance with the essential requirements and other relevant provisions of Directive 2014/53/EU.

A copy of the EU declaration of the conformity is available online at www.oneodio.com

UK compliance statement: YI ZHAO (SHENZHEN) CO., LIMITED. Hereby declares that this device is in compliance with the essential requirements and other relevant provisions of the UK Radio Equipment Regulations 2017 (SI 2017/1206).

A copy of the UK declaration of the conformity is available online at www.oneodio.com

RF specification

Function	Operation Frequency	Transmission power (EIRP)
Bluetooth	2402MHz~2480MHz	<20dBm



R 214-116844

INNOVATION FOR GAMERS.