

# User Manual



OneOdio-F1

**F1** True Wireless Earphones

The power of music!

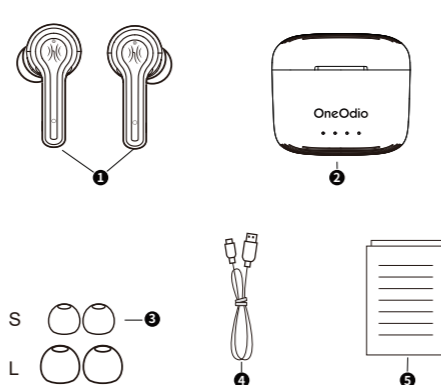
OneOdio



## Product Specifications / Характеристики продукта / Especificaciones del producto

Model Name Название модели Nombre del modelo	F1	Charging Interface Интерфейс зарядки Interfaz de carga	Type-C
Impedance Импеданс Impedancia	32Ω±15%	Bluetooth Range Диапазон Bluetooth Alcance de Bluetooth	10m/33ft
Bluetooth Chip Чип Bluetooth Chip de Bluetooth	AD6973D	Driver Diameter Диаметр драйвера Diámetro del controlador	φ10mm
Bluetooth Version Версия Bluetooth Versión de Bluetooth	V5.0	Frequency Response Частотный диапазон Respuesta de frecuencia	20-20kHz
Sensitivity Чувствительность Sensibilidad	103±3dB	Charging Voltage Напряжение зарядки Voltaje de carga	DC 5V
Charging Time Время зарядки Tiempo de carga	≈1.5h	Battery Capacity Емкость аккумулятора Capacidad de la batería	50mAh (Earphones) 50 mAh (наушники) 50 mAh (auriculares)
Battery Capacity Емкость аккумулятора Capacidad de la batería	300mAh (Charging Case) 300 mAh (зарядный чехол) 300 mAh (estuche de carga)		
Working Time at 50% Volume Время работы при 50% громкости Tiempo de trabajo al 50% de volumen	≈5h		
Working Time at 80% Volume Время работы при 80% громкости Tiempo de trabajo al 80% del volumen	≈4.5h		
Working Time at 100% Volume Время работы при 100% громкости Tiempo de trabajo al 100% de volumen	≈4h		

## What's in the Box? / Especificaciones del producto? / ¿Qué hay en la caja?

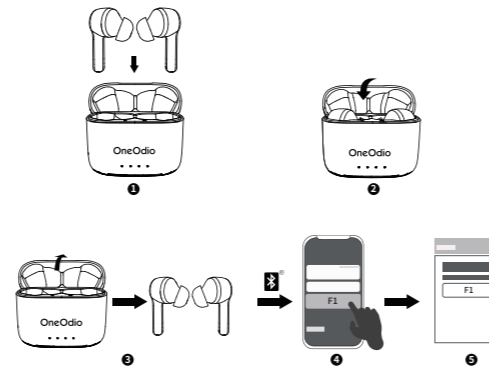


- EN**
- 1 Earphones x1 Pair
  - 2 Charging Case x1
  - 3 Eartips x2 M Size Installed
  - 4 Type-C Charging Cable x1
  - 5 User Manual

- RU**
- 1 наушники x1 пара
  - 2 зарядный чехол x1
  - 3 Шапочка для ушей x2 Размер M установлен
  - 4 зарядный кабель Type-C x1
  - 5 Руководство пользователя

- ES**
- 1 Par de Auriculares x1
  - 2 estuches de carga x1
  - 3 Tapones para los oídos x2 tamaño M instalados
  - 4 Cable de Carga tipo C x1
  - 5 Manual de Usuario

## How to Pair? / Как спариться? / ¿Cómo emparejar?

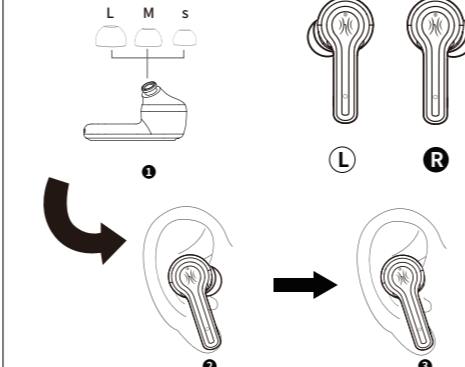


- EN**
- 1 Put F1 earbuds into charging case
  - 2 Close the charging case
  - 3 Open the charging case and take out earbuds, F1 will enter pairing mode automatically
  - 4 Choose F1 from bluetooth list on your phone
  - 5 F1 earbuds are connected

- RU**
- 1 Поместите наушники F1 в зарядный футляр
  - 2 Закройте зарядный чехол
  - 3 Откройте чехол для зарядки и выньте наушники, F1 автоматически перейдет в режим сопряжения.
  - 4 Выберите F1 из списка Bluetooth на вашем телефоне.
  - 5 Наушники F1 подключены

- ES**
- 1 Coloque los auriculares F1 en el estuche de carga
  - 2 Cierre el estuche de carga
  - 3 Abra el estuche de carga y saque los auriculares, F1 ingresará al modo de emparejamiento automáticamente.
  - 4 Elija F1 de la lista de bluetooth en su teléfono
  - 5 Auriculares F1 están conectados

## How to Wear? / Как носить? / ¿Como Usar?



- EN**
- 1 Choose the suitable eartips
  - 2 Insert F1 into the ears
  - 3 Twist slightly until fits well

- RU**
- 1 Выберите подходящие шапочка для ушей
  - 2 Вставьте F1 в уши
  - 3 Слегка поверните, пока не станет хорошо

- ES**
- 1 Elija los tapones para los oídos adecuados
  - 2 Inserte F1 en su oído
  - 3 Gire suavemente hasta que encaje

## Control / Контроль / Control



Play/Pause  
▶▶ Воспроизвести / Пауза  
Reproducir pausar

Previous Track  
◀ Предыдущий трек  
Pista Anterior

Next Track  
▶ Следующий трек  
Siguiente Pista

Answer/End Call  
📞 Ответ / завершение вызова  
Responder / Finalizar llamada

Reject Call  
✖ Отклонить вызов  
Llamada rechazada

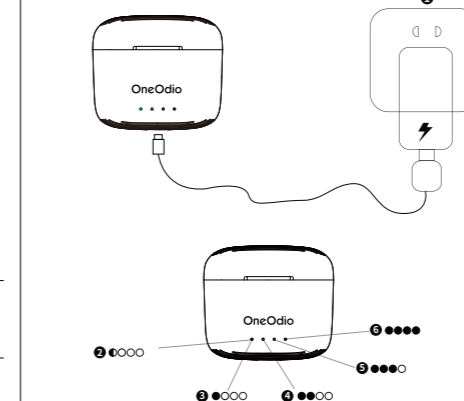
Voice Assistant  
🗣 Голосовой помощник  
Asistente de voz

Turn on  
🔊 Включать  
Encender

Turn off  
🔊 Выключать  
Apagar

Reset  
🔄 Сброс настроек  
Reiniciar

## Charging / Зарядка / Cargando



- EN**
- 1 Output: DC 5V
  - 2 Low battery: <15%
  - 3 15%-30%
  - 4 30%-50%
  - 5 50%-75%
  - 6 75%-100%

- RU**
- 1 Выход: DC 5V
  - 2 Низкий заряд батареи: <15%
  - 3 15%-30%
  - 4 30%-50%
  - 5 50%-75%
  - 6 75%-100%

- ES**
- 1 Salida: DC 5V
  - 2 Batería baja: <15%
  - 3 15%-30%
  - 4 30%-50%
  - 5 50%-75%
  - 6 75%-100%

## Limited Warranty / Ограниченная гарантия / Garantía Limitada

Our friendly customer service team are ready and waiting to help. Here is how we can connect:  
Наша дружелюбная команда по обслуживанию клиентов готова помочь. Вот как мы можем подключиться:  
Nuestro amable equipo de servicio al cliente está listo y esperando para ayudar. Así es como podemos conectarnos:

Global: [oneodio.com/pages/support](http://oneodio.com/pages/support)

Japan: [oneodio.jp/pages/support](http://oneodio.jp/pages/support)

India: [oneodio.in/pages/support](http://oneodio.in/pages/support)

Global: +85269403848 (Mon to Fri 9:00 am-6:30 pm, UTC +8 HKT)

India: +918929369620 (Mon to Fri 9:30 am-5:30 pm, IST)

Global: [info@oneodio.com](mailto:info@oneodio.com)

India: [support@oneodio.in](mailto:support@oneodio.in)

## FCC Warning

This device complies with part 15 of the FCC Rules. Operation is subject to the following two conditions: (1) This device may not cause harmful interference, and (2) this device must accept any interference received, including interference that may cause undesired operation.

Any Changes or modifications not expressly approved by the party responsible for compliance could void the user's authority to operate the equipment.

This equipment has been tested and found to comply with the limits for a Class B digital device, pursuant to part 15 of the FCC Rules. These limits are designed to provide reasonable protection against harmful interference in a residential installation. This equipment generates uses and can radiate radio frequency energy and, if not installed and used in accordance with the instructions, may cause harmful interference to radio communications. However, there is no guarantee that interference will not occur in a particular installation. If this equipment does cause harmful interference to radio or television reception, which can be determined by turning the equipment off and on, the user is encouraged to try to correct the interference by one or more of the following measures:

- Reorient or relocate the receiving antenna.
- Increase the separation between the equipment and receiver.
- Connect the equipment into an outlet on a circuit different from that to which the receiver is connected.
- Consult the dealer or an experienced radio/TV technician for help.

The device has been evaluated to meet general RF exposure requirement. The device can be used in portable exposure condition without restriction.

FCC ID:2A25A-F1  
MIC:214-14851

**Manufacturer's Name:** YI ZHAO (SHENZHEN) CO., LIMITED  
**Manufacturer's Address:** 6th Floor, T3 Creative Building, Shenzhen Colorful Huiwei Cultural And Creative Expo City, No.5010 Baoan Avenue, Caowei Community, Hangcheng Street, Baoan District, Shenzhen.  
**Product name:** True Wireless Earphone  
**Model number:** F1  
**Operating Temperature:** 0° C to 45° C

**EU compliance statement:** YI ZHAO (SHENZHEN) CO., LIMITED. Hereby declares that this device in compliance with the essential requirements and other relevant provisions of Directive 2014/53/EU.  
A copy of the EU declaration of the conformity is available online at [www.oneodio.com](http://www.oneodio.com)

**UK compliance statement:** YI ZHAO (SHENZHEN) CO., LIMITED. Hereby declares that this device is in compliance with the essential requirements and other relevant provisions of the UK Radio Equipment Regulations 2017 (SI 2017/1206).  
A copy of the UK declaration of the conformity is available online at [www.oneodio.com](http://www.oneodio.com)

RF specification

Function	Operation Frequency	Transmission power (EIRP)
Bluetooth	2402MHz-2480MHz	<20dBm