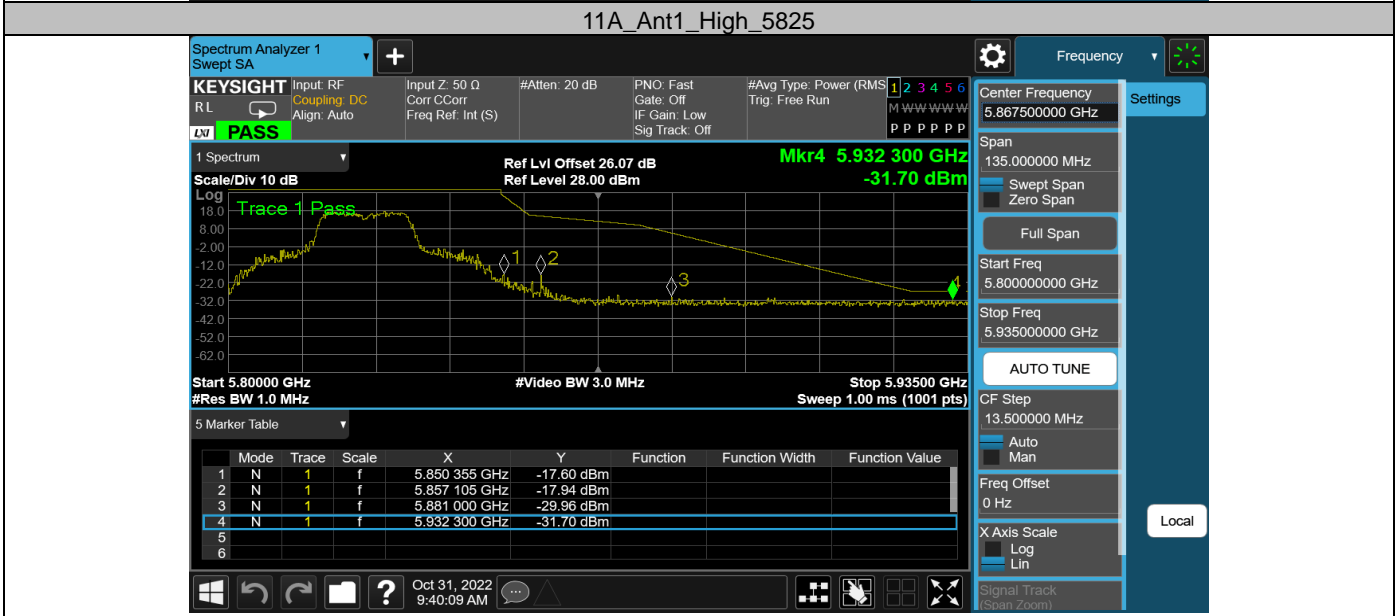
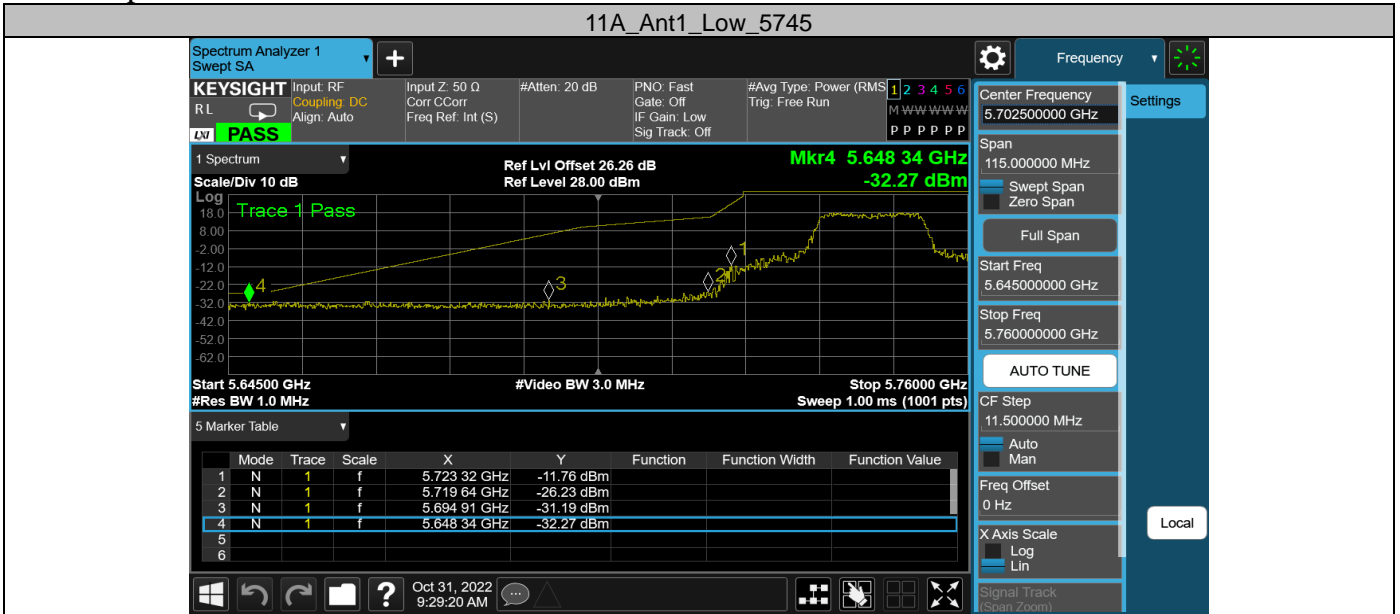


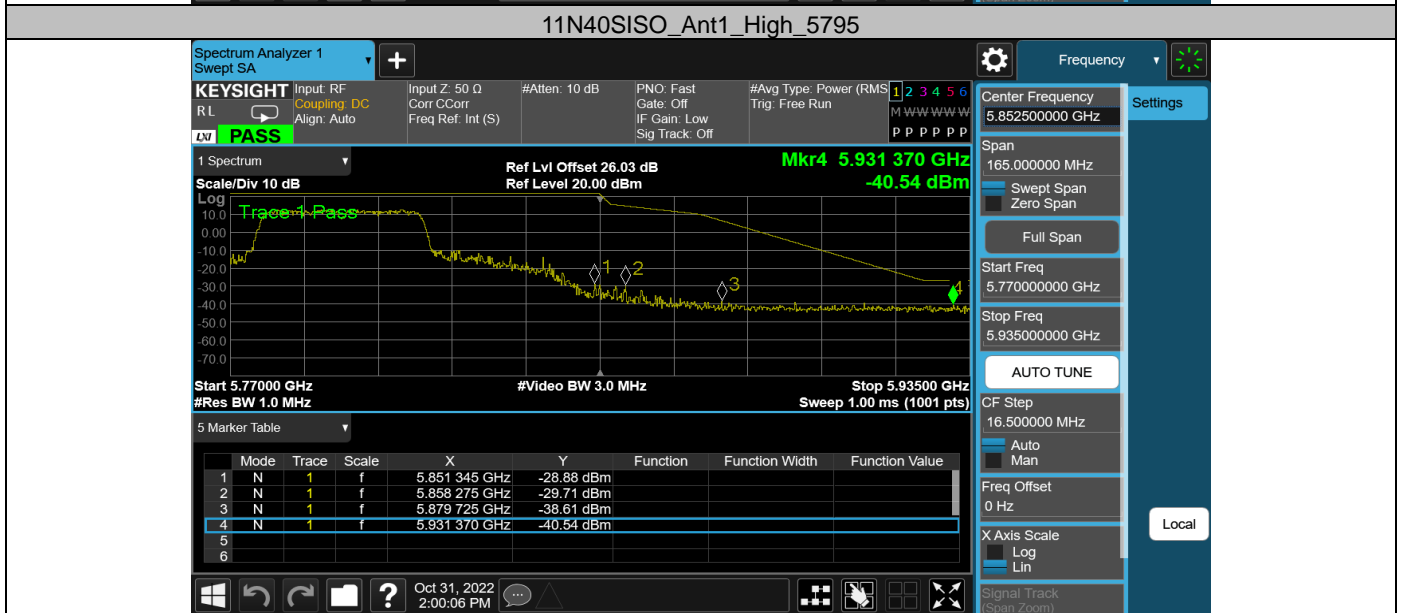
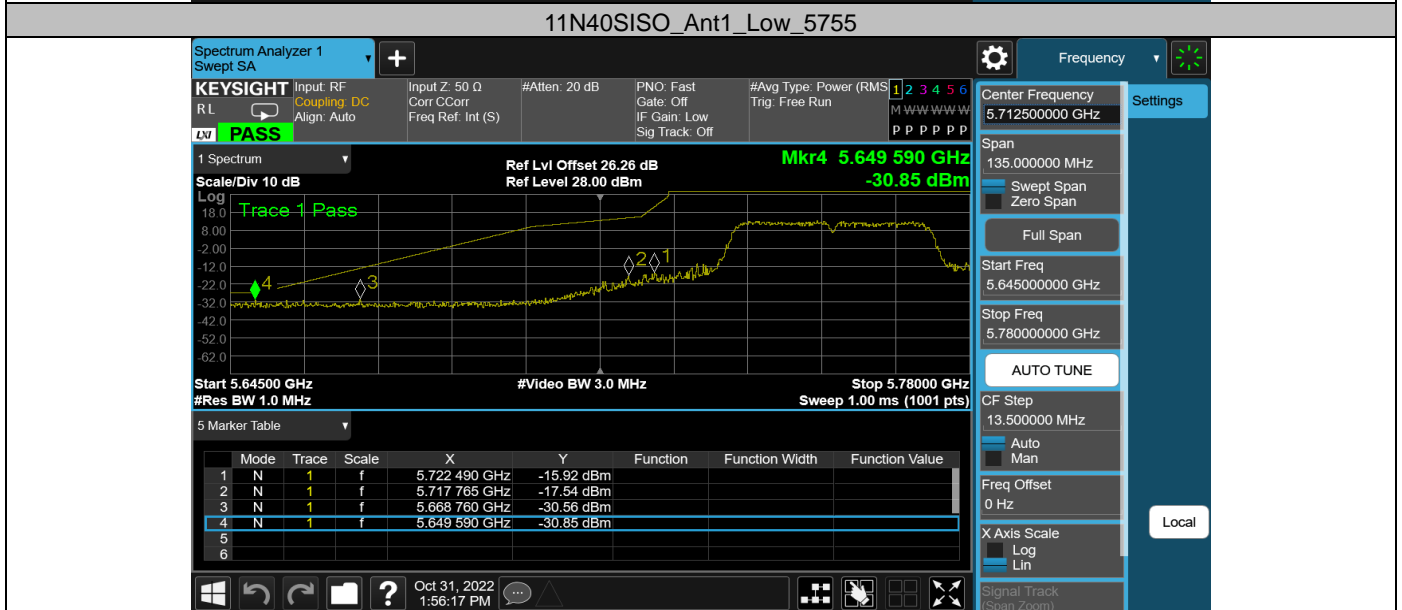
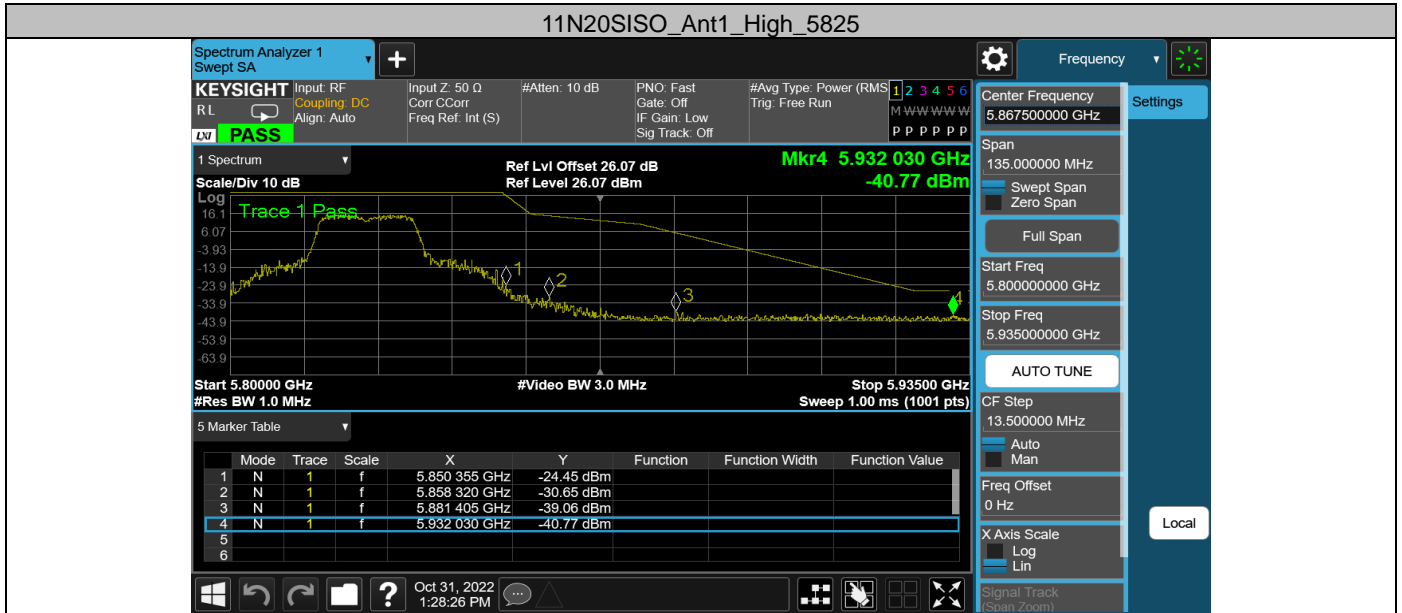
Appendix G: Band edge measurements

Test Result B4

Test Mode	Antenna	Ch Name	Frequency [MHz]	Freq Range [MHz]	Result [dBm]	Limit [dBm]	Verdict
11A	Ant1	Low	5745	5650~5700	-31.19	≤6.23	PASS
				5700~5720	-26.23	≤15.50	PASS
				5720~5725	-11.76	≤23.16	PASS
				5760~5650	-32.27	≤-27	PASS
		High	5825	5850~5855	-17.6	≤16.41	PASS
				5855~5875	-17.94	≤10.59	PASS
				5875~5925	-29.96	≤-22.56	PASS
				5925~5935	-31.7	≤-27	PASS
11N20SISO	Ant1	Low	5745	5650~5700	-39.08	≤-2.96	PASS
				5700~5720	-30.84	≤15.59	PASS
				5720~5725	-19.61	≤25.26	PASS
				5760~5650	-40.91	≤-27	PASS
		High	5825	5850~5855	-24.45	≤16.41	PASS
				5855~5875	-30.65	≤10.93	PASS
				5875~5925	-39.06	≤-22.26	PASS
				5925~5935	-40.77	≤-27	PASS
11N40SISO	Ant1	Low	5755	5650~5700	-30.56	≤-13.12	PASS
				5700~5720	-17.54	≤14.97	PASS
				5720~5725	-15.92	≤21.28	PASS
				5780~5650	-30.85	≤-27	PASS
		High	5795	5850~5855	-28.88	≤18.67	PASS
				5855~5875	-29.71	≤10.92	PASS
				5875~5925	-38.61	≤-23.50	PASS
				5925~5935	-40.54	≤-27	PASS

Test Graphs B4





Appendix H: Frequency Stability
Test Result

Voltage								
Test Mode	Antenna	Frequency[M Hz]	Voltage [Vdc]	Temperature (°C)	Deviation (Hz)	Deviation (ppm)	Limit (ppm)	Verdict
11A	Ant1	5180	NV	NT	0.00	0.000000	20	PASS
			LV	NT	0.00	0.000000	20	PASS
			HV	NT	0.00	0.000000	20	PASS
		5260	NV	NT	-20000.00	-3.802281	20	PASS
			LV	NT	0.00	0.000000	20	PASS
			HV	NT	-20000.00	-3.802281	20	PASS
		5500	NV	NT	-20000.00	-3.636364	20	PASS
			LV	NT	-40000.00	-7.272727	20	PASS
			HV	NT	-20000.00	-3.636364	20	PASS
		5745	NV	NT	0.00	0.000000	20	PASS
			LV	NT	0.00	0.000000	20	PASS
			HV	NT	-20000.00	-3.481288	20	PASS

Temperature								
Test Mode	Antenna	Frequency[M Hz]	Voltage [Vdc]	Temperature (°C)	Deviation (Hz)	Deviation (ppm)	Limit (ppm)	Verdict
11A	Ant1	5180	NV	-30	0.00	0.000000	20	PASS
			NV	-20	0.00	0.000000	20	PASS
			NV	-10	0.00	0.000000	20	PASS
			NV	0	0.00	0.000000	20	PASS
			NV	10	0.00	0.000000	20	PASS
			NV	20	20000.00	3.861004	20	PASS
			NV	30	0.00	0.000000	20	PASS
			NV	40	-20000.00	-3.861004	20	PASS
		5260	NV	50	0.00	0.000000	20	PASS
			NV	-30	-20000.00	-3.802281	20	PASS
			NV	-20	-20000.00	-3.802281	20	PASS
			NV	-10	0.00	0.000000	20	PASS
			NV	0	-20000.00	-3.802281	20	PASS
			NV	10	-20000.00	-3.802281	20	PASS
			NV	20	-20000.00	-3.802281	20	PASS
			NV	30	-20000.00	-3.802281	20	PASS
		5500	NV	40	-20000.00	-3.802281	20	PASS
			NV	50	-20000.00	-3.802281	20	PASS
			NV	-30	-20000.00	-3.636364	20	PASS
			NV	-20	-20000.00	-3.636364	20	PASS
			NV	-10	-20000.00	-3.636364	20	PASS
			NV	0	-20000.00	-3.636364	20	PASS
			NV	10	-20000.00	-3.636364	20	PASS
			NV	20	-20000.00	-3.636364	20	PASS
		5745	NV	30	-20000.00	-3.636364	20	PASS
			NV	40	-20000.00	-3.636364	20	PASS
			NV	50	-20000.00	-3.636364	20	PASS
			NV	-30	-20000.00	-3.481288	20	PASS
			NV	-20	0.00	0.000000	20	PASS
			NV	-10	-20000.00	-3.481288	20	PASS
			NV	0	0.00	0.000000	20	PASS
			NV	10	-20000.00	-3.481288	20	PASS
			NV	20	0.00	0.000000	20	PASS
			NV	30	0.00	0.000000	20	PASS
			NV	40	-20000.00	-3.481288	20	PASS
			NV	50	-20000.00	-3.481288	20	PASS

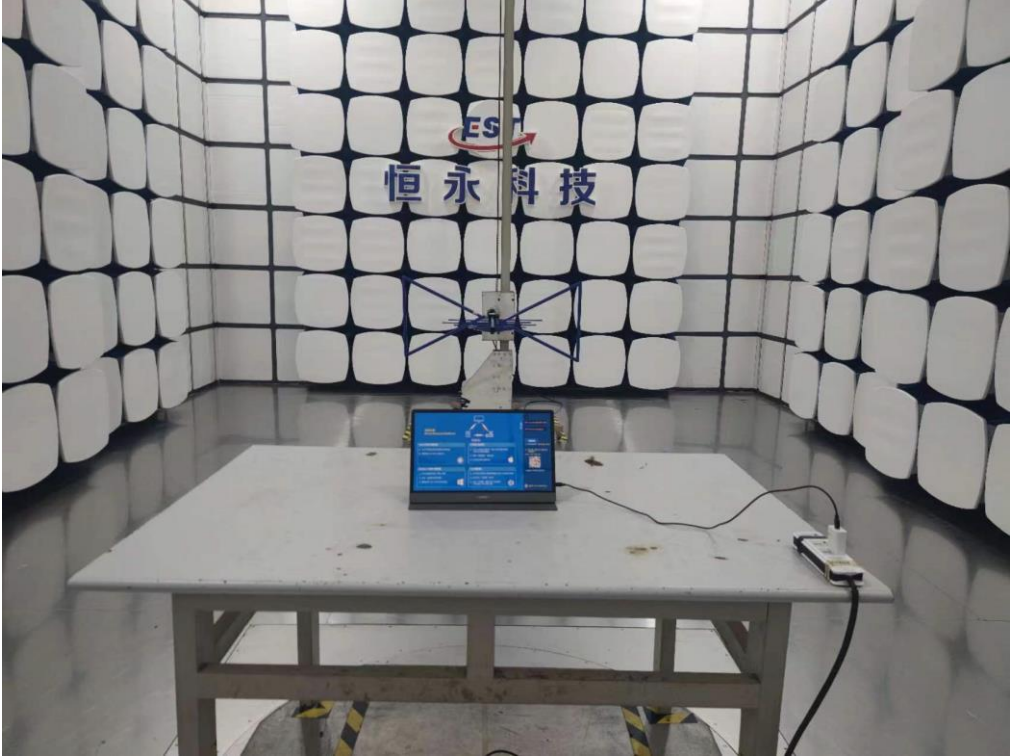


11. TEST SETUP PHOTO

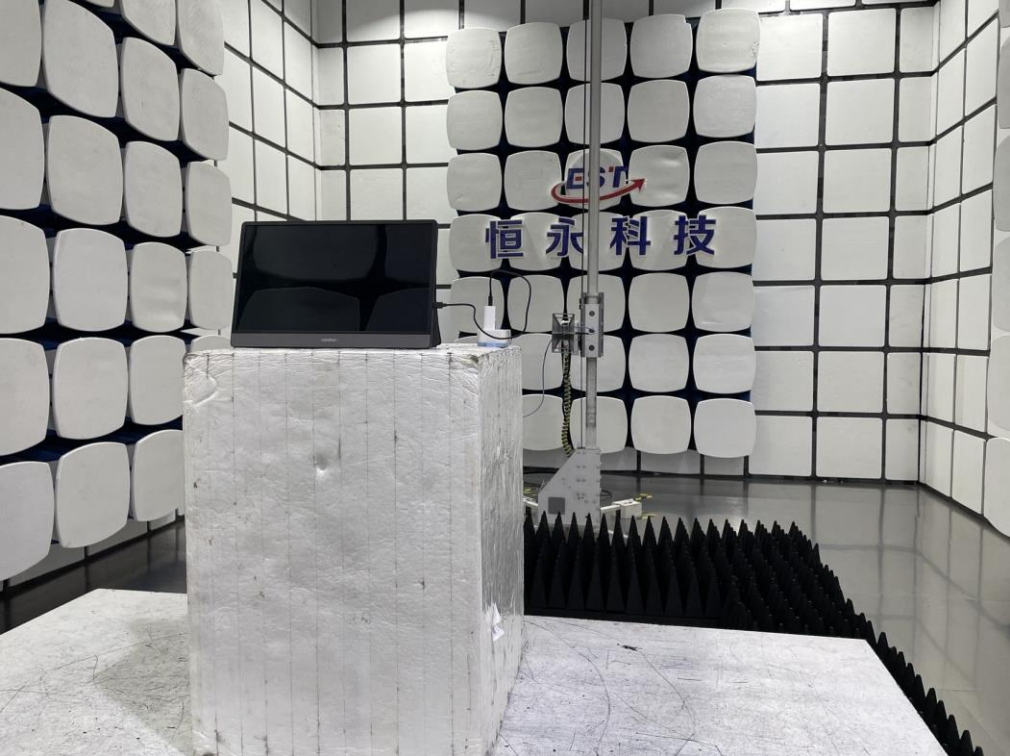
Conducted Test



Radiated Test (Below 1GHz)



Radiated Test (Above 1GHz)



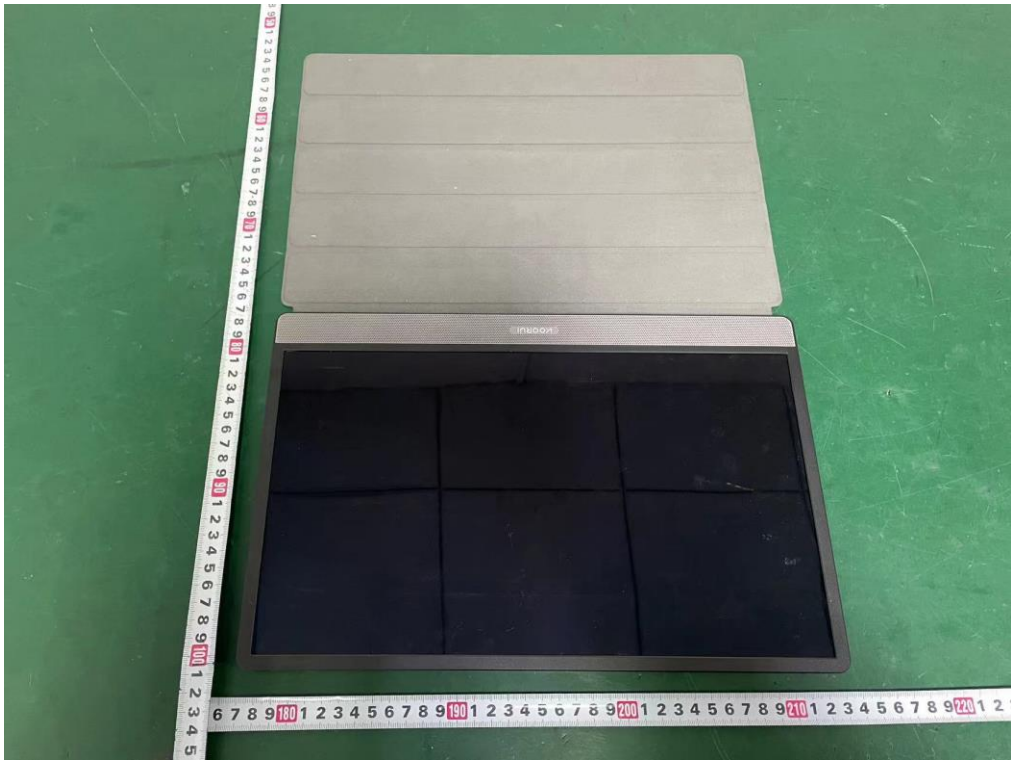
12. EUT PHOTO

External Photos

M/N: 15B2



External Photos
M/N: 15B2

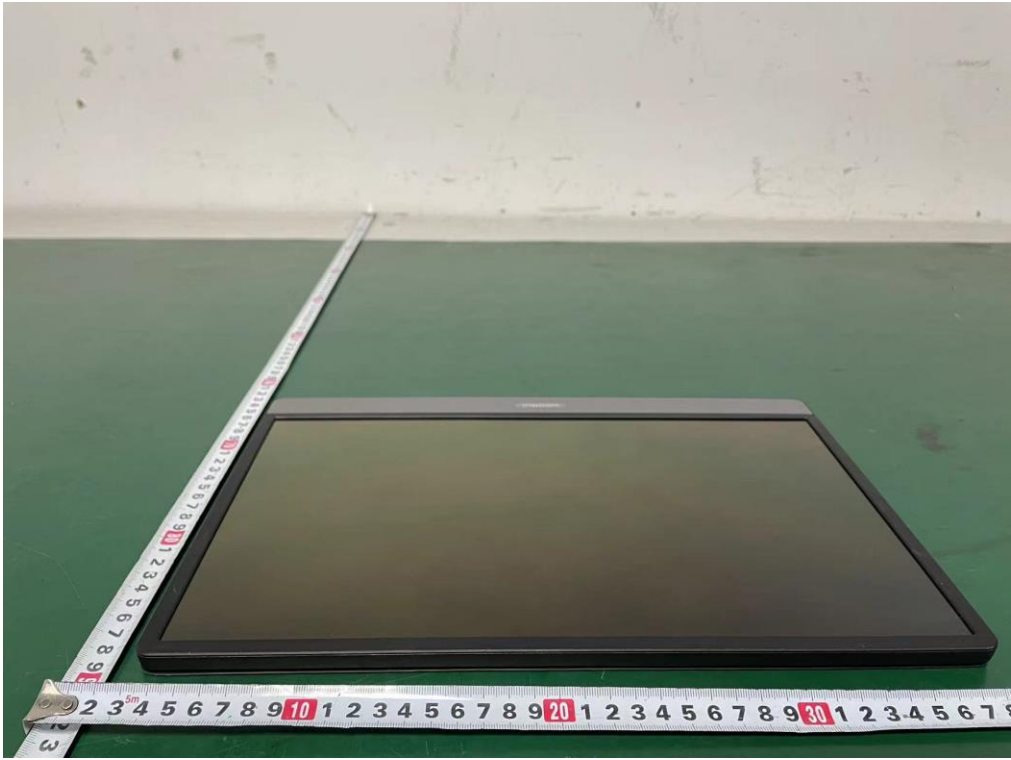
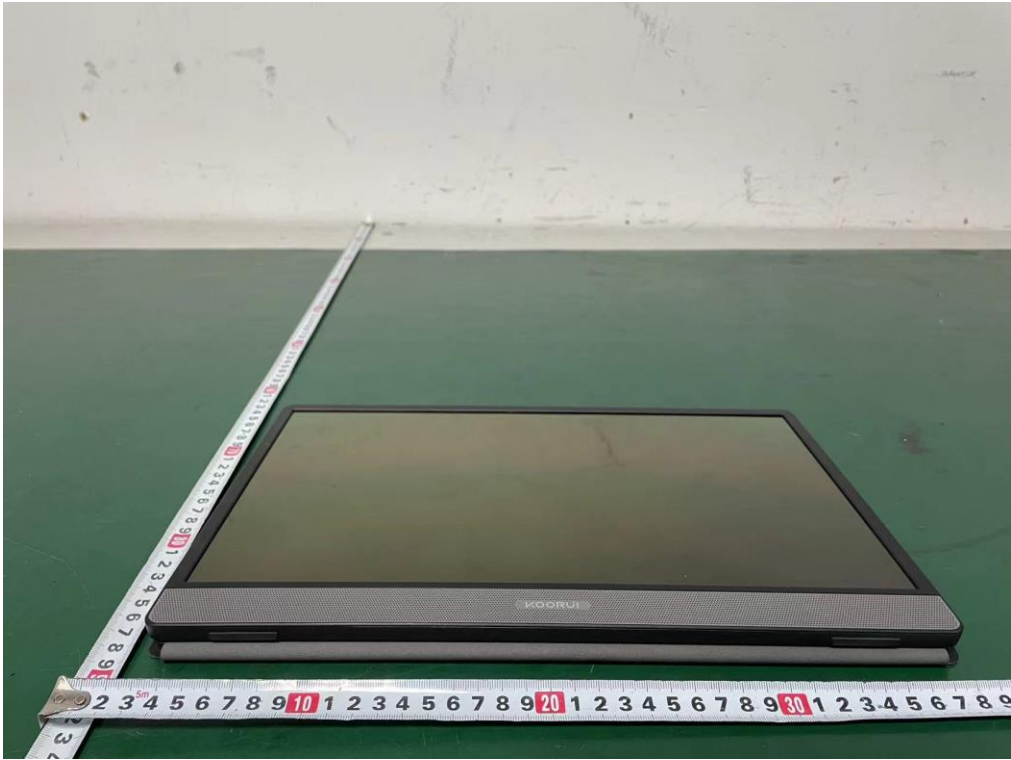


External Photos

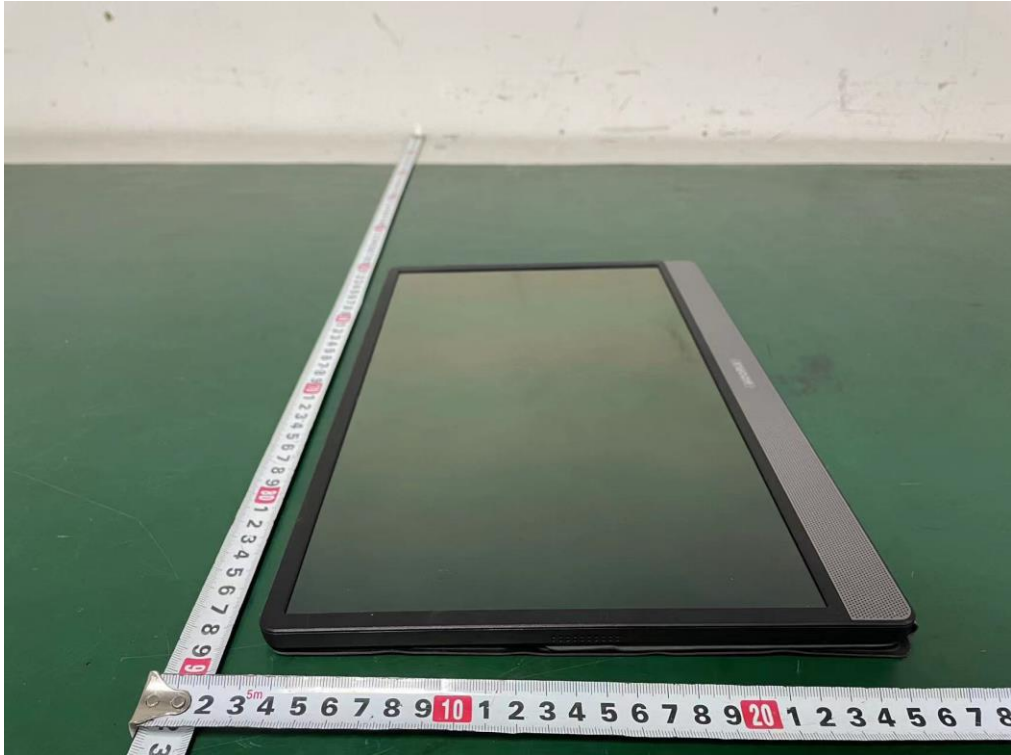
M/N: 15B2



External Photos
M/N: 15B2



External Photos
M/N: 15B2



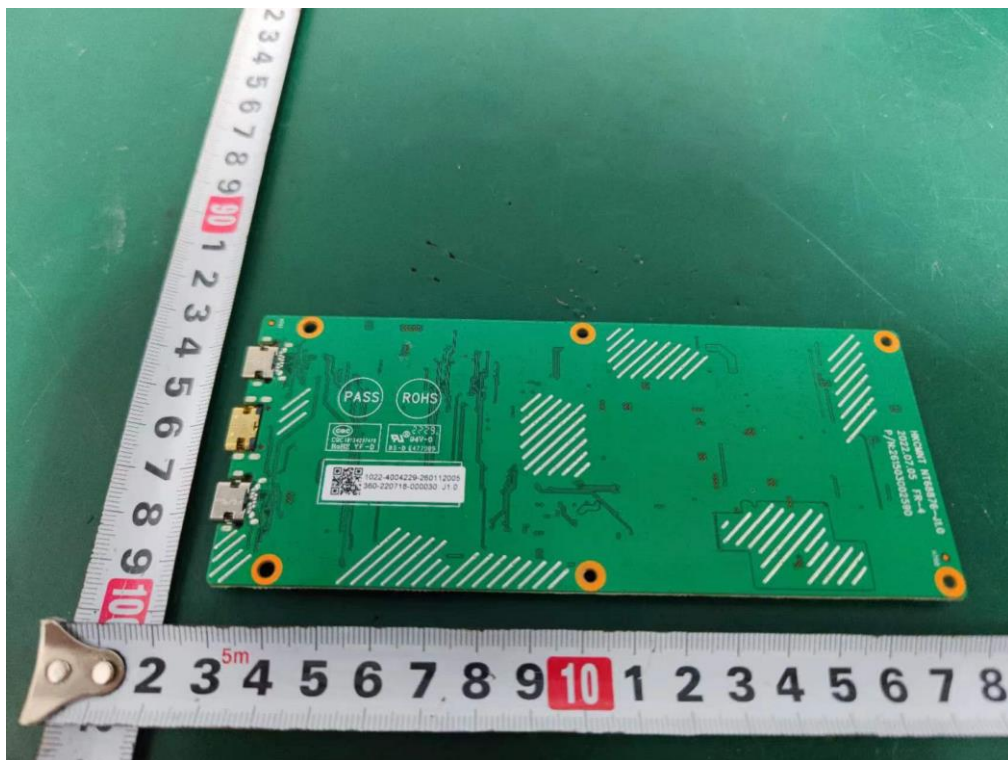
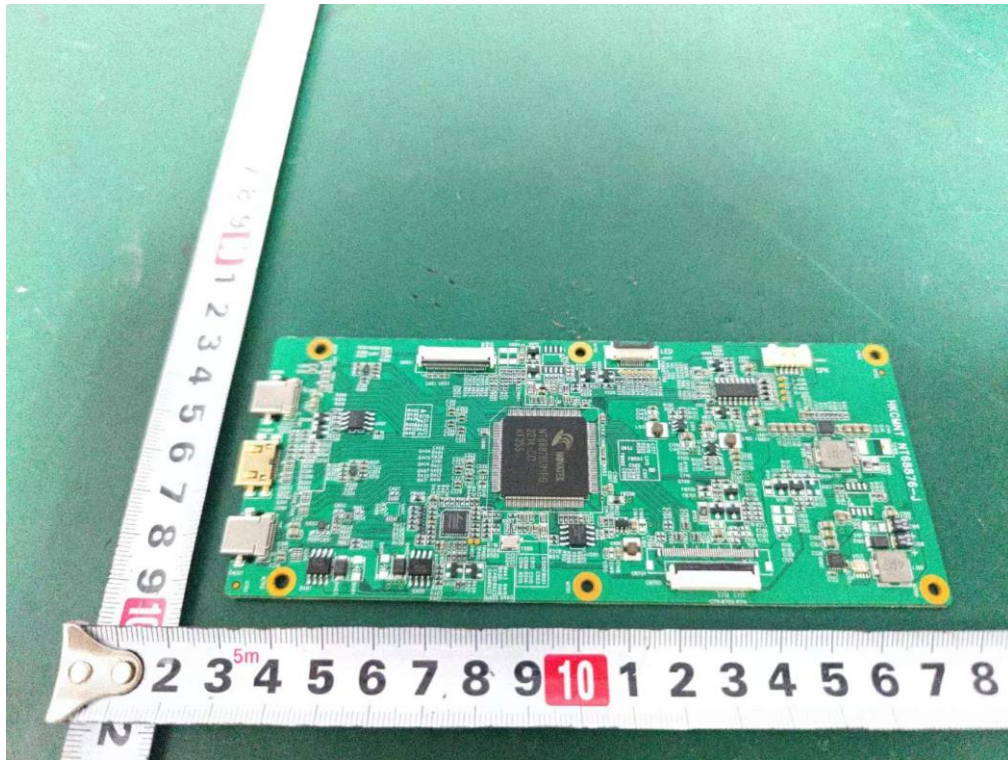
Internal Photos
M/N: 15B2



Wi-Fi
Antenna

Internal Photos

M/N: 15B2



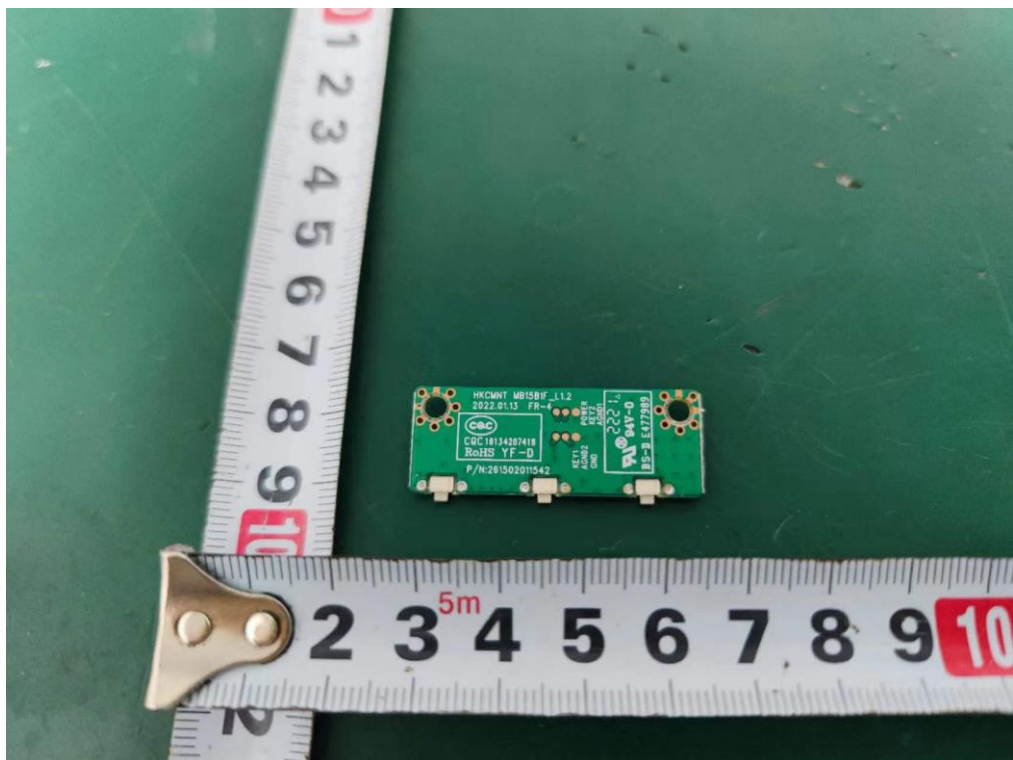
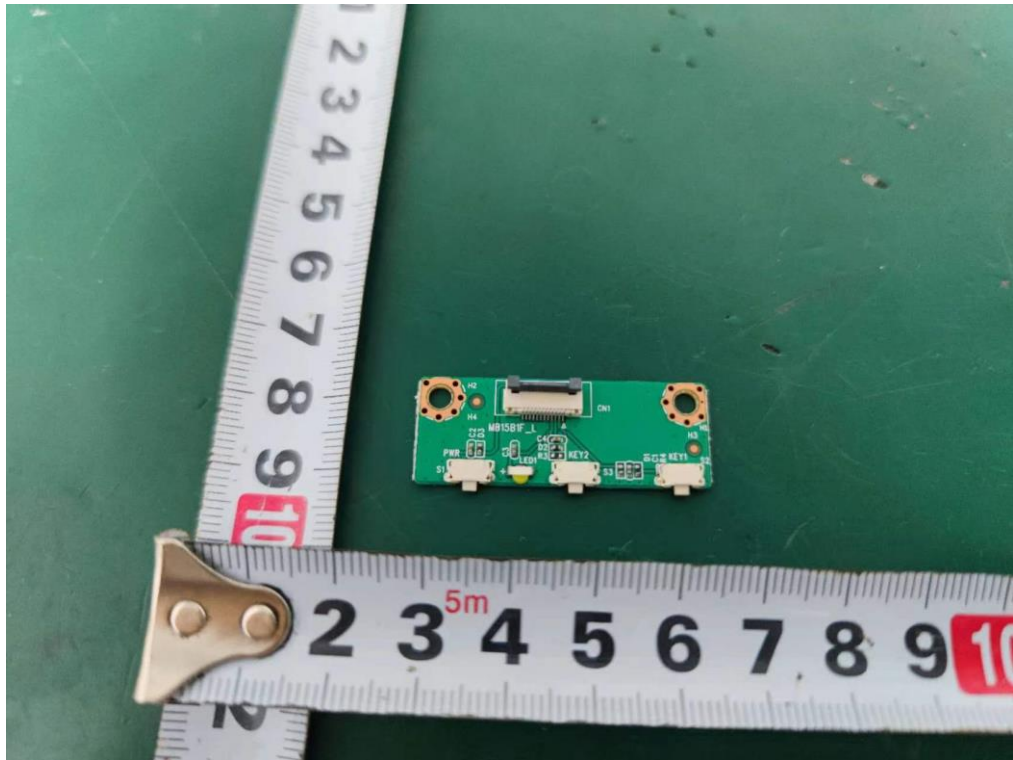
Internal Photos

M/N: 15B2



Internal Photos

M/N: 15B2



End of Test Report