

---

---

# 产品规格书

## PRODUCT SPECIFICATION SHEET

Shenzhen Be-Comfortable Technology Co. Ltd

物料名称

APPELLATION: 2.4G Folding glue stick antenna

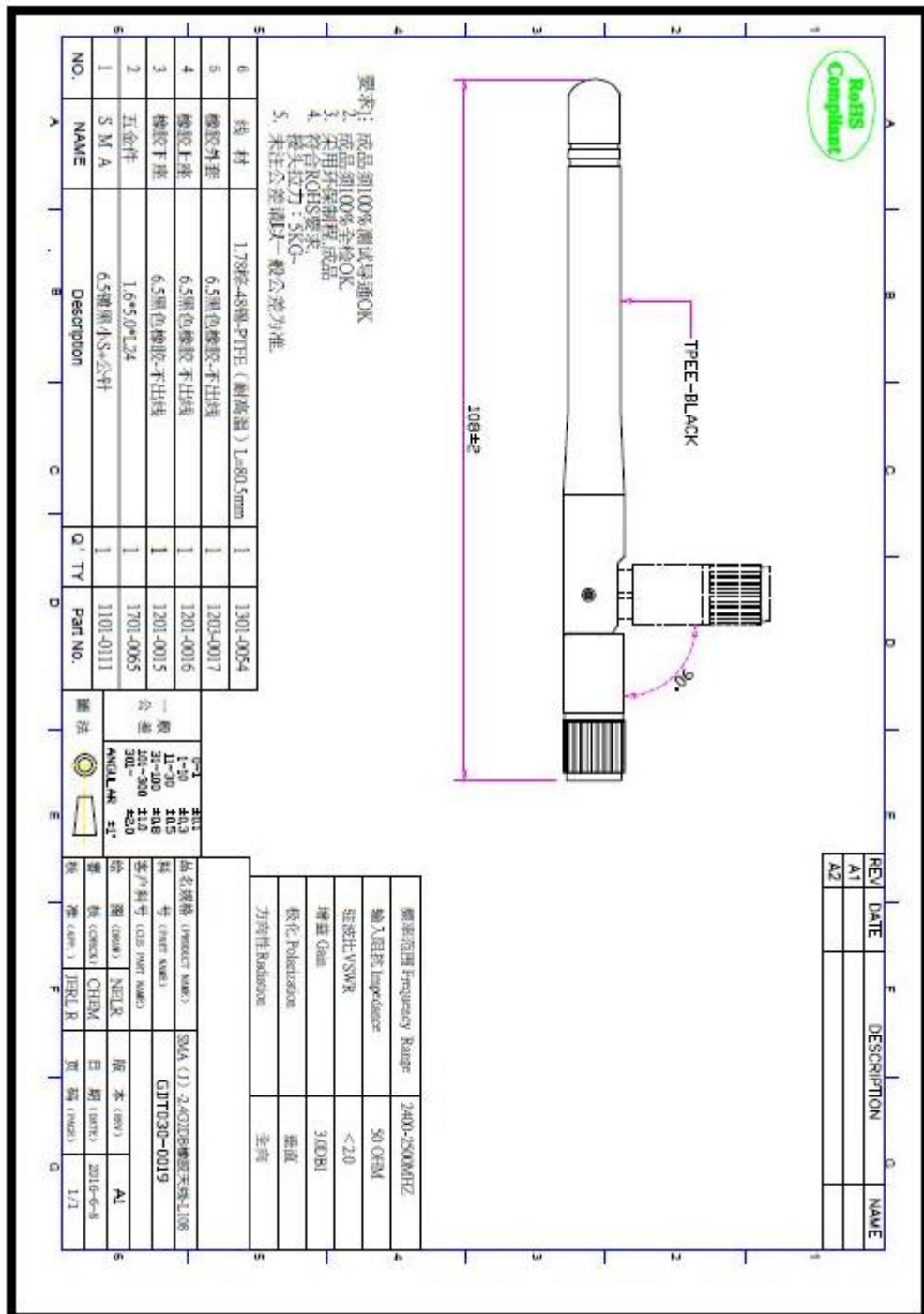
产品型号

PART NUMBER: YXS-2400-WZ108W

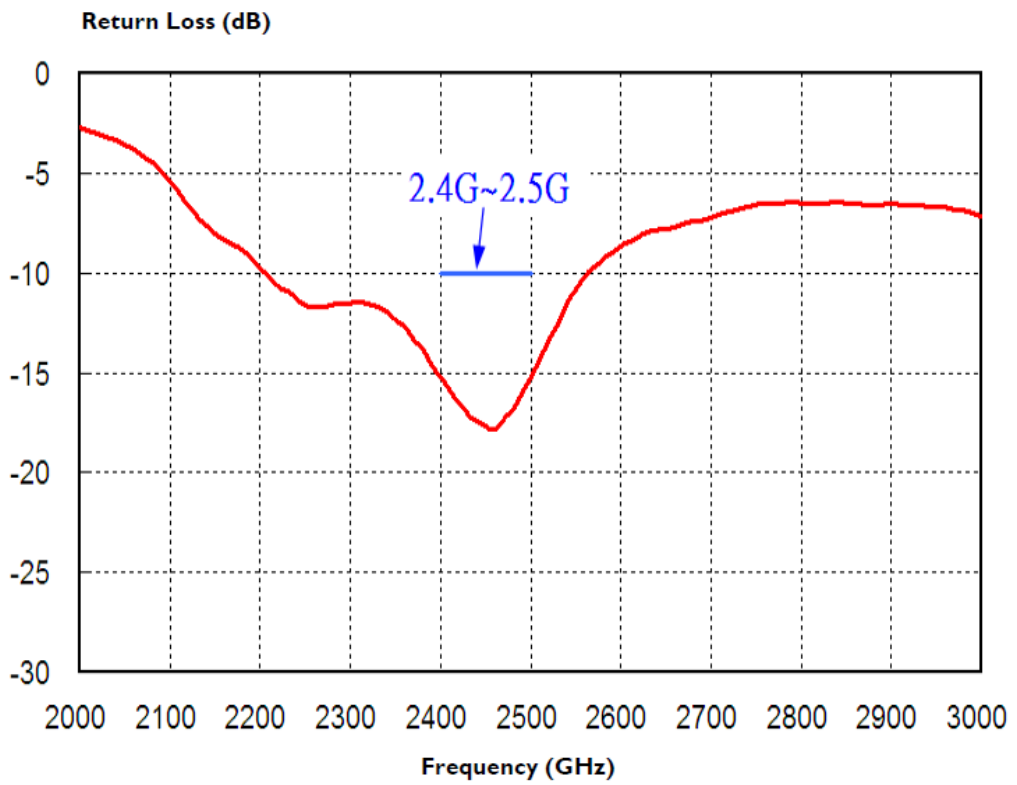
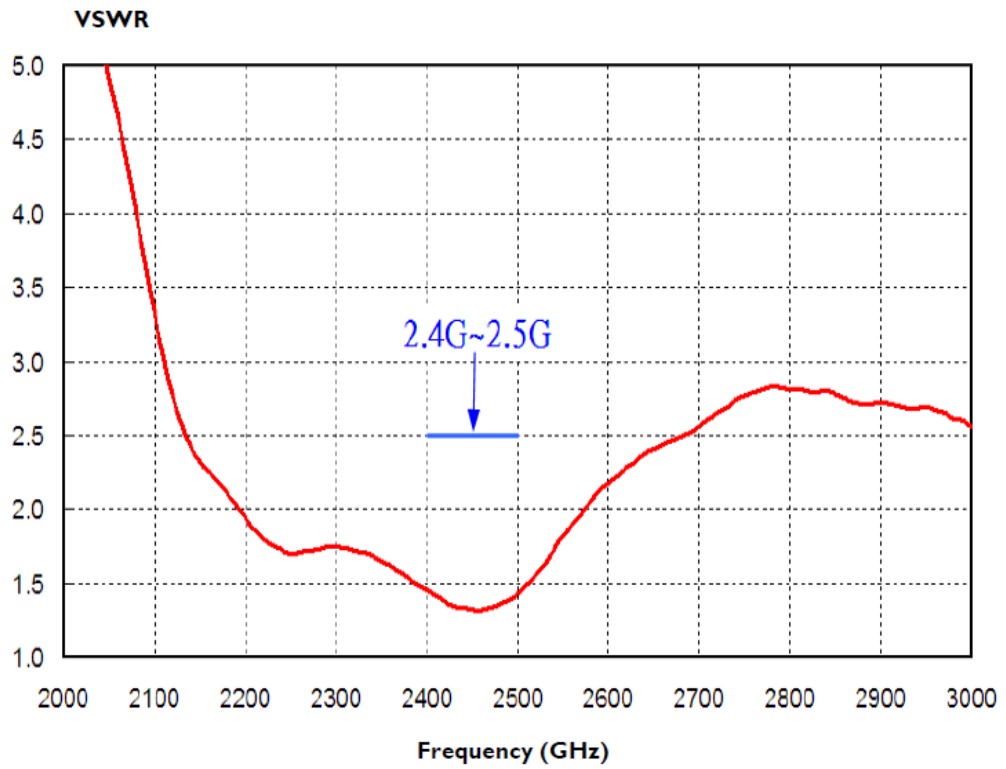
## 1、 产品技术指标 (PRODUCT TECHNICAL SPECIFICATION)

<b>电性能指标 Electrical Specifications</b>	
频率范围 Frequency Range (MHz)	2400-2500
频带宽度 Bandwidth (MHz)	100
输入阻抗 Input Impedence	Input Impedence ( $\Omega$ ) 50
电压驻波比 V.S.W.R	$\leq 1.7$
增益 Gain (dBi)	2.02db
极化形式 Polarization Type	垂直 Vertical
雷电保护 Lightning Protection	直流接地
功率容量 Power Capacity (w)	50
<b>机械指标 Mechanical Specifications</b>	
天线长度 Antenna Length (mm)	108
辐射体 Radiator	铜 Cuprum
连接器型号 Connect Type	RP-SMA-J(SMA 内螺内孔)
工作温度 Working Temp( $^{\circ}$ C)	-40~60
储藏温度 Storage Temperature( $^{\circ}$ C)	-20~40
外壳颜色 Radome Color	黑色
外壳材料 Radome Material	TPEE
重量 Weight (g)	8

## 2、产品规格图(PRODUCT SPECIFICATION CHART)



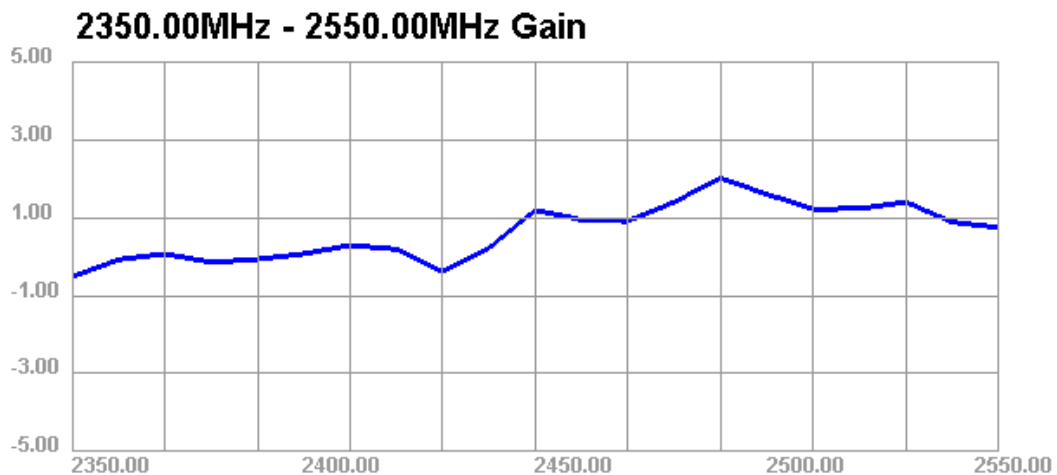
### 3、驻波图 (STATIONARY WAVE PATTERN)



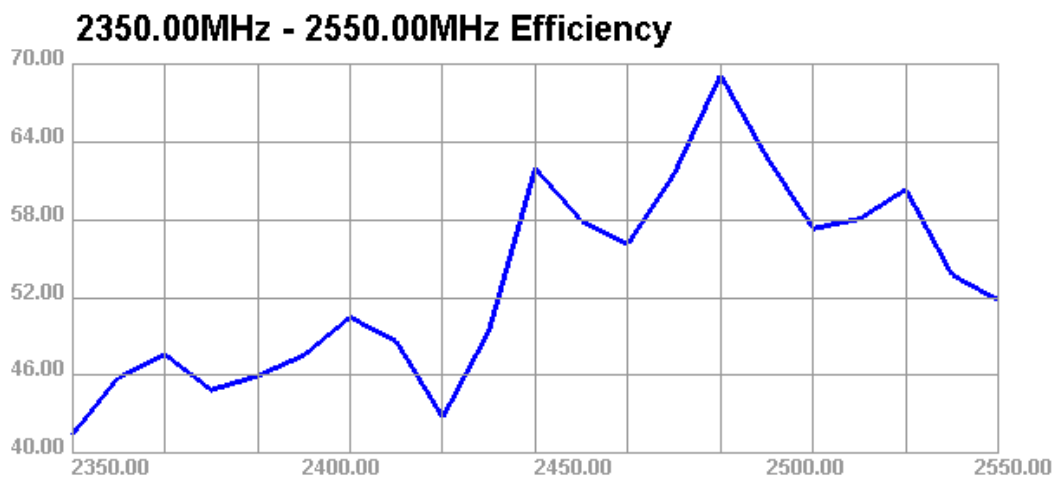
## 1. Passive Test For wifi

Passive Test For wifi								
Freq (MHz)	Effi (%)	Effi (dB)	Gain (dBi)	Gain (dBd)	Max (dB)	Min (dB)	Attenut Hor	Attenut Ver
2400	47.57	-3.23	0.07	-2.08	0.07	-17.55	47.06	46.33
2410	50.49	-2.97	0.29	-1.86	0.29	-17.84	47.2	46.63
2420	48.63	-3.13	0.19	-1.96	0.19	-18.34	47.32	46.53
2430	42.78	-3.69	-0.38	-2.53	-0.38	-19.05	47.08	46.39
2440	49.46	-3.06	0.22	-1.93	0.22	-18.4	47.26	46.55
2450	61.96	-2.08	1.2	-0.95	1.2	-17.21	48	47.41
2460	57.89	-2.37	0.95	-1.2	0.95	-17.28	48.03	47.34
2470	56.11	-2.51	0.91	-1.24	0.91	-17.35	48.08	47.47
2480	61.54	-2.11	1.4	-0.75	1.4	-16.99	48.2	47.68
2490	69.12	-1.6	2.02	-0.13	2.02	-16.49	48.41	47.89
2500	62.81	-2.02	1.6	-0.55	1.6	-16.99	48.36	47.93
2510	57.32	-2.42	1.23	-0.92	1.23	-17.39	48.17	47.66
2520	58.07	-2.36	1.23	-0.92	1.23	-17.13	48.09	47.68
2530	60.32	-2.2	1.4	-0.75	1.4	-16.68	48.03	47.56
2540	53.74	-2.7	0.89	-1.26	0.89	-16.94	47.97	47.54
2550	51.79	-2.86	0.75	-1.4	0.75	-16.98	48.04	47.63

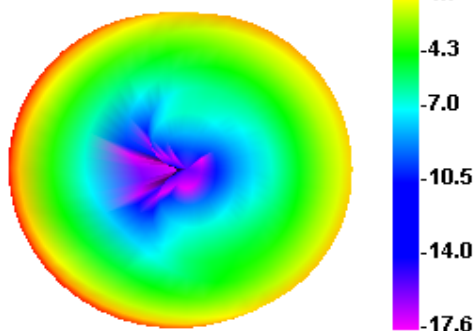
## 2. GAIN



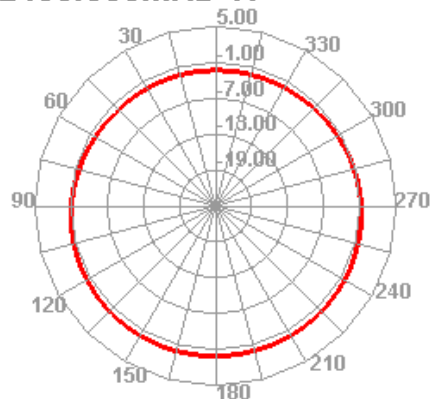
### 3. 其它参数



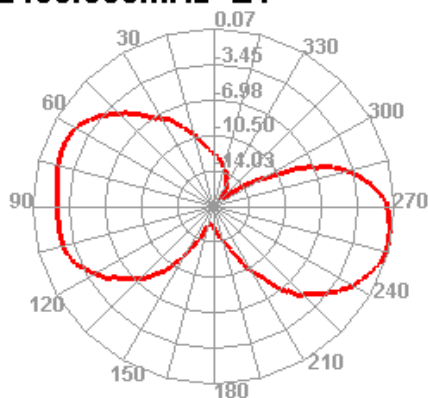
**2400.000MHz**



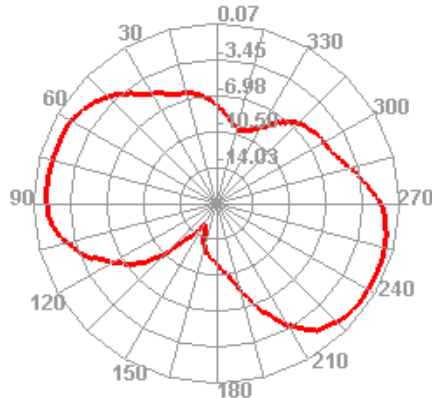
**2400.000MHz H**



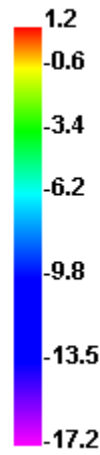
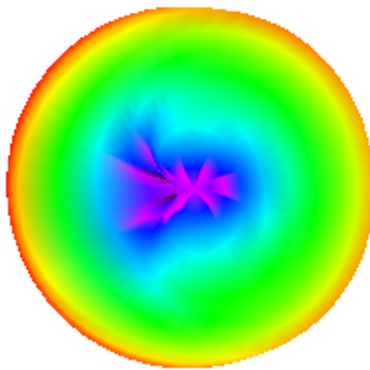
**2400.000MHz E1**



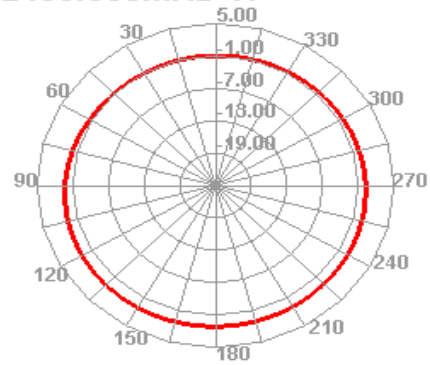
**2400.000MHz E2**



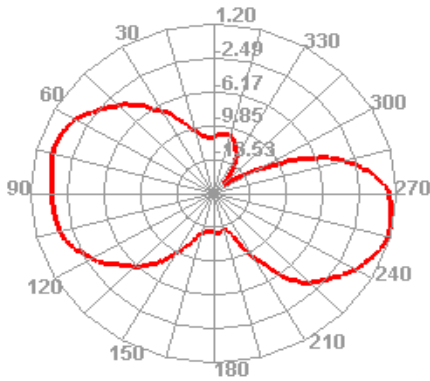
2450.000MHz



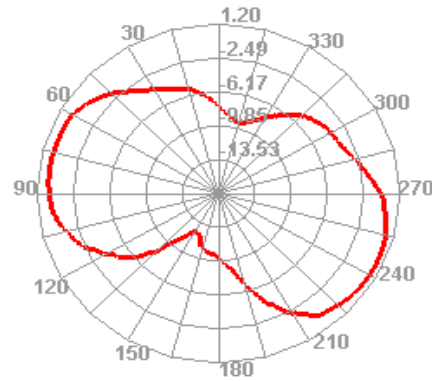
2450.000MHz H



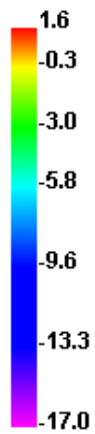
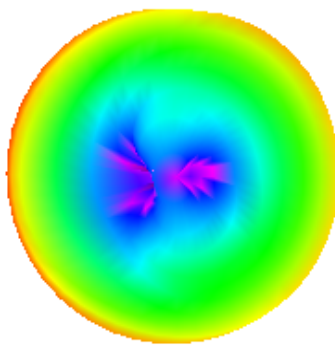
2450.000MHz E1



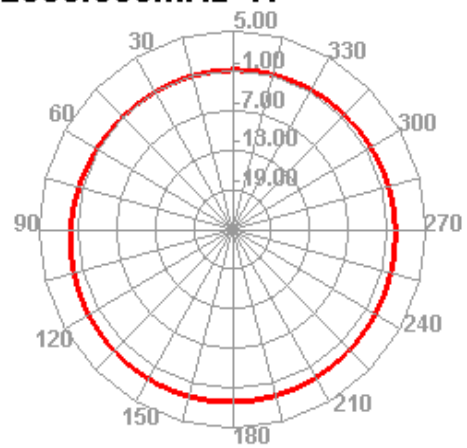
2450.000MHz E2



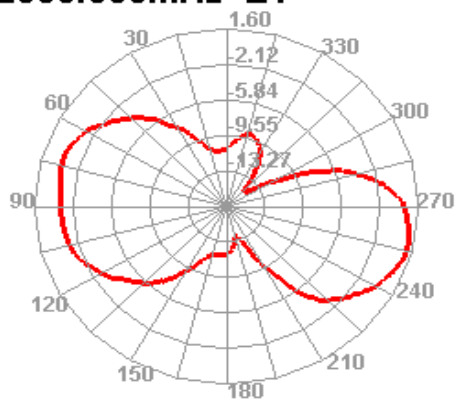
2500.000MHz



2500.000MHz H



2500.000MHz E1



2500.000MHz E2

