

N21

User Manual

Version 1.0
Published June 2021

Content

1. Introduction.....	1
1.1 Specification.....	2
1.2 Package Contents.....	3
1.3 I/O Panel.....	4
2. Installation.....	4
2.1 Screw Holes.....	5
2.2 Pre-installation Precautions.....	6
2.3 Installation of Memory Modules.....	6
2.4 Onboard Headers and Connectors.....	6

Precaution

The motherboard is made up of many sophisticated integrated circuits and other components that are easily damaged by static electricity, Please read the manual and prepare the following instructions before installation:

Please confirm that the size of the chassis is consistent with the motherboard before installation.



Please do not tear up the serial number and agent warranty sticker on the motherboard before installation, otherwise it will affect standard of product warranty.



To install or remove the motherboard and other hardware devices, please be sure to turn off the power before, and removal of power cord from outlet. When you install other hardware devices to the motherboard socket, make sure the interface and socket is closely.



Take the motherboard, please try your best to avoid touching the metal connection parts to avoid short circuits in the line. Take the motherboard, CPU or when the memory, it is best to wear anti-static bracelet.

If no ESD bracelet, make sure your hands dry, and touch the metal to dissipate the static charge. Before the boards are not installed, first placed in anti-static mat or anti-static bags.

When you want to remove the motherboard power supply when the plug from the socket, make sure that power supply is turned off. In before power on make sure that the power supply voltage of the voltage value is set in the area of standard values in make sure all hardware devices before turning on the power supply cable and the power cord is correctly connected.

Do not let the screw contacts on the motherboard circuit or part to avoid Board damage or failure.

Please make sure that no screws or metal in or on the motherboard inside the computer chassis. Do not place the computer in unstable.

Chapter 1: Introduction

1.1 Specification

Model	N21
Processor	Intel Celeron J4125 (quad core, 2.0 GHz, Turbo boost 2.7 GHz)
Chipset	Adopt Intel express chipset
RAM	1*SODDR4(can up to 16G)
Display port	Integrated Intel HD Graphic card, Support 1*HDMI,1*DP
Expansion port	1*Mini-PCIE,, 1*M.2 2230 support WiFi
Storage	1* M.2 2280 support SATA
Audio	N/A
Network	4* Intel I210AT 1000M Lan, support wake on lan
I/O	4* RJ-45 1* 12V DC input 1* HDMI,1*DP 2 *USB 3.0, 1*Type C, 1*Micro USB 1*Power switch 1* Power Led, 1* HDD led
Built-in I/O	1 * FP1 1 * J2 1 * JSATA Port, 1*SATA 1 * SODIMM 1 * CPU_Fan
BIOS	AMI 64M DPI Flash ROM
WDT	Support hardware reset (256 level, 0~255 sec)
Power supply	DC-12V
Temp	-20℃~60℃
Humidity	0~95% relative humidity, non-condensing
Dimension	144*126.5*46 CM

Package Contents

N21 Main Host
Vesa Bracket
Screw Package

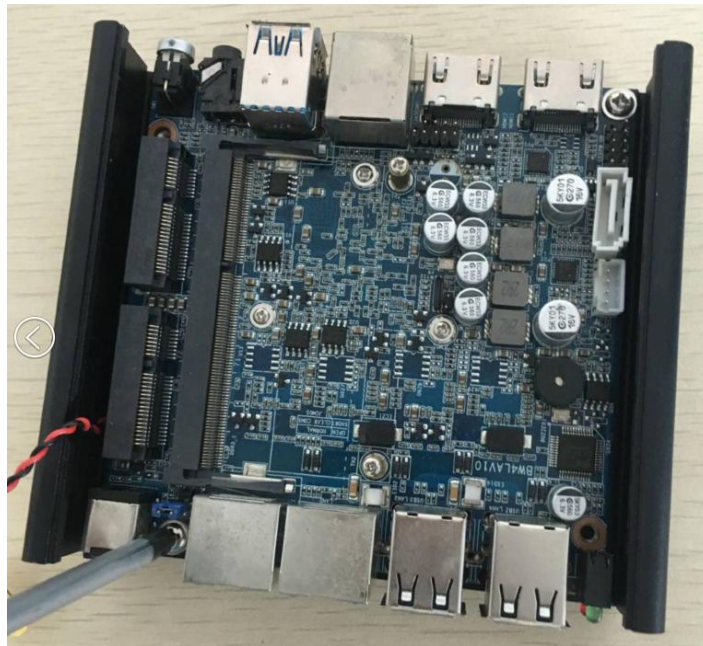
1.3 I/O Panel



Chapter 2

2.1 screw holes

Place screws into the holes to secure the motherboard to the chassis .



Place screws into the hold to secure the bottom panel to the chassis .



2.1 Pre-installation precautions

Take note of the following precautions before you install motherboard components or change any motherboard settings.

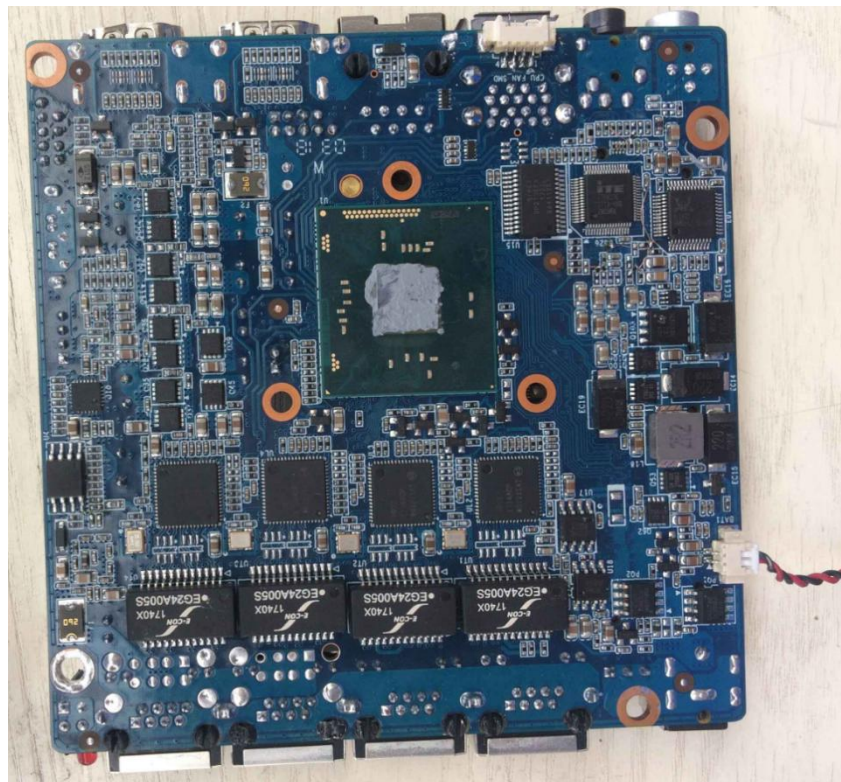
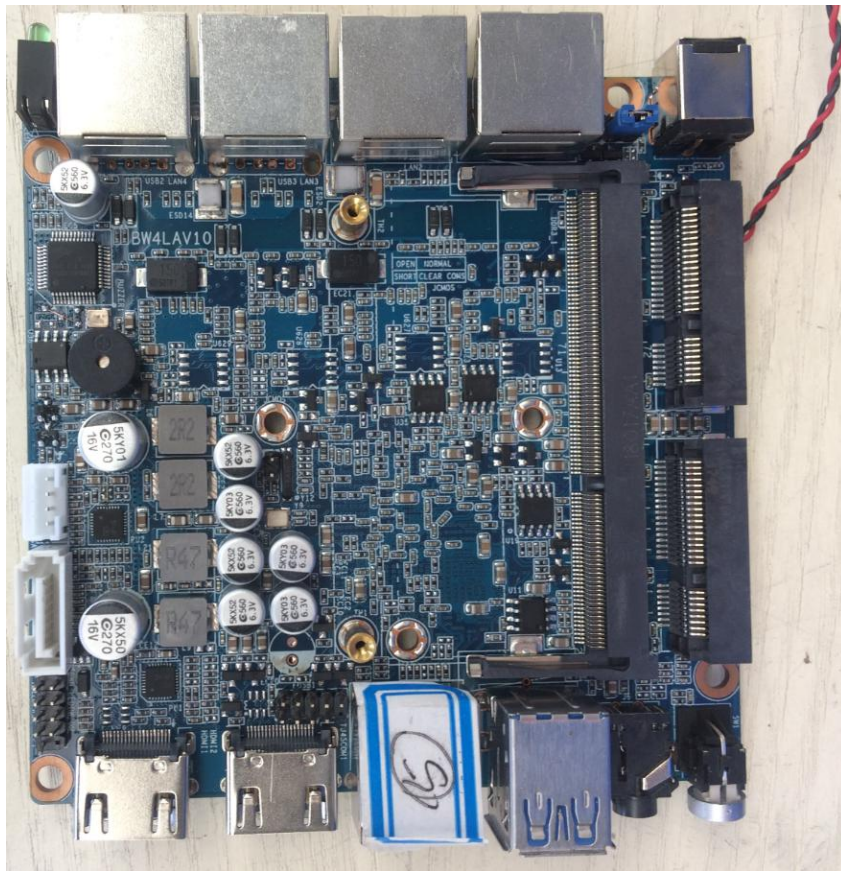
1. Unplug the power cord from the wall socket before touching any component .
2. To avoid damaging the motherboard components due to static electricity, Never place your motherboard directly on the carpet or the like . Also remember to use a grounded wrist strap or touch a safety grounded object before you handle components .
3. Hold components by the edges and do not touch the ICs.
4. Whenever you uninstall any component, place it on a grounded antistatic pad or in the bag that comes with the component .

2.3 Installation Memory Modules

Please make sure to disconnect power supply before adding or removing So-DIMMs or the system components.

- Step1. Unlock a SO-DIMM slot by pressing the retaining clips outward.
- Step2. Align a SO-DIMM on the slot such that the notch on the SO-DIMM matches the break on the slot

2.4 Onboard headers and Connectors



FCC WARNING

This device complies with part 15 of the FCC Rules. Operation is subject to the following two conditions: (1) this device may not cause harmful interference, and (2) this device must accept any interference received, including interference that may cause undesired operation.

Any changes or modifications not expressly approved by the party responsible for compliance could void the user's authority to operate the equipment.

NOTE: This equipment has been tested and found to comply with the limits for a Class B digital device, pursuant to Part 15 of the FCC Rules. These limits are designed to provide reasonable protection against harmful interference in a residential installation. This equipment generates, uses and can radiate radio frequency energy and, if not installed and used in accordance with the instructions, may cause harmful interference to radio communications.

However, there is no guarantee that interference will not occur in a particular installation.

If this equipment does cause harmful interference to radio or television reception, which can be determined by turning the equipment off and on, the user is encouraged to try to correct the interference by one or more of the following measures:

- Reorient or relocate the receiving antenna.
- Increase the separation between the equipment and receiver.
- Connect the equipment into an outlet on a circuit different from that to which the receiver is connected.
- Consult the dealer or an experienced radio/TV technician for help.

To maintain compliance with FCC's RF Exposure guidelines, This equipment should be installed and operated with minimum distance between 20cm the radiator your body: Use only the supplied antenna.