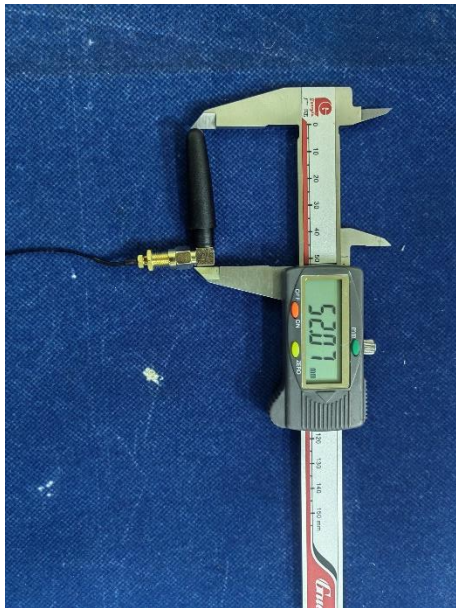


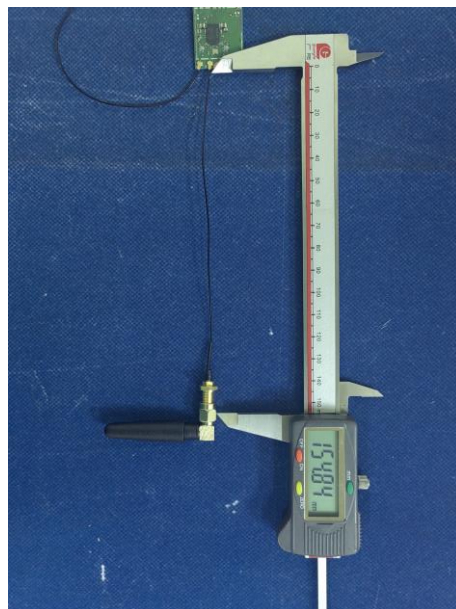
## 1. Antenna Description:

Antenna type	External antenna
Model	V1410
Frequency range	2400-2500MHz
Manufacturer	Shenzhen Gowin Solution Co.,Ltd.
ANT Peak Gain	2.00 dBi

## 2. Antenna Photo:



Length :52.07mm  
diameter:11.69mm



Length : 154.84mm  
diameter: 0.90mm

### 3. Test Equipment & Conditions

#### 3.1 Test instrument

VSWR is tested using Agilent E5071B connected to a hand mechanism, and the status is free space.

#### 3.2 Test environment and methods

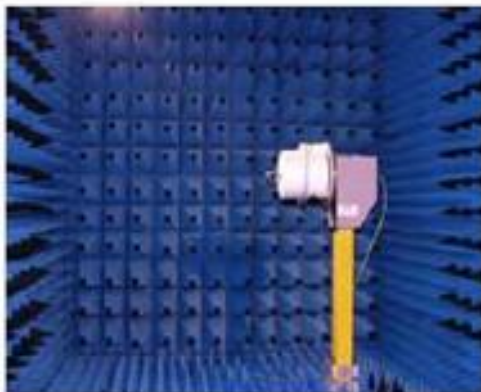
Dark room specifications: ETS-743

TD-SCDMA test equipment: StarPoint SP6010/Agilent 8960

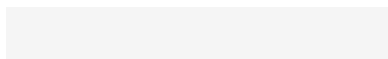
LTE-TDD/FDD-SCDMA test equipment: StarPoint SP8011/CMW500

WCDMA/GSM/CDMA test equipment: Agilent 8960

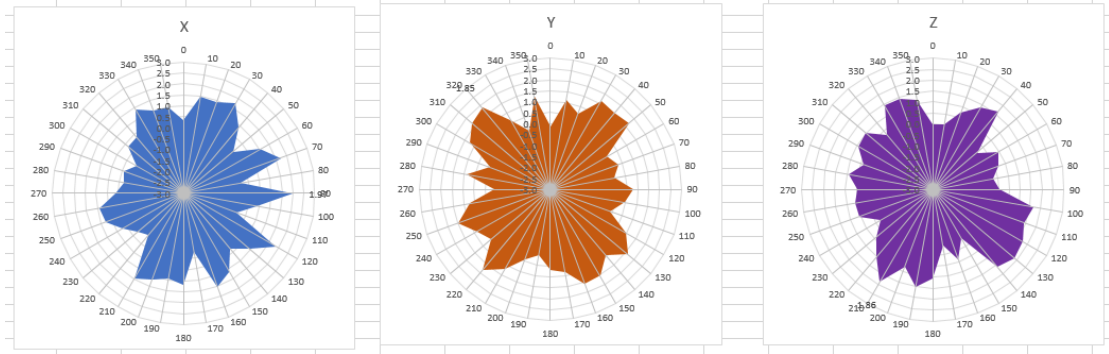
Passive efficiency testing equipment: Agilent Technologies E5071B



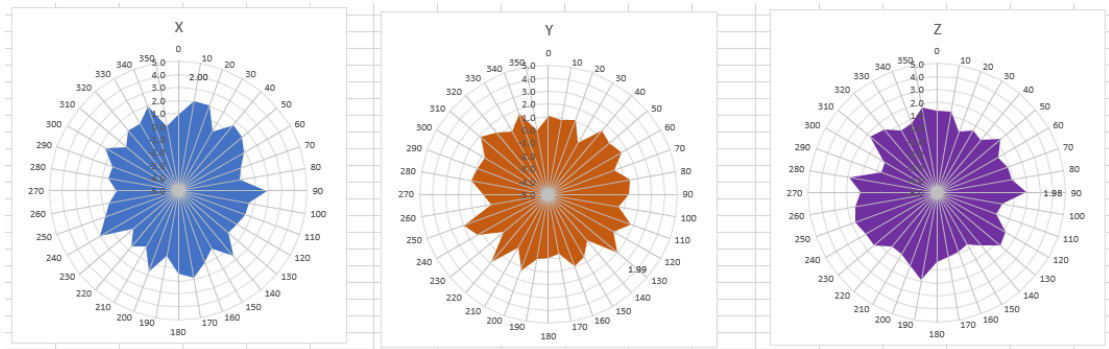
### 4 . Antenna Radiation Pattern



# 2400MHz



# 2450MHz



# 2500MHz

