

## RGB LED Rock Light User Guide

English

### RGB LED Rock Light User Guide

THANK YOU for choosing MustWin. To optimize user experience, please install and use the light according to the following instruction.

#### Warning

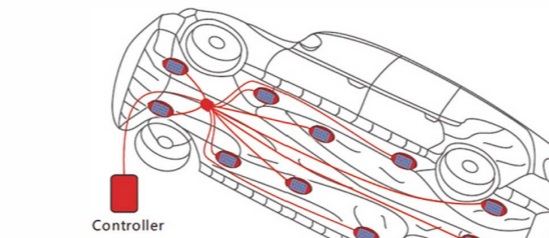
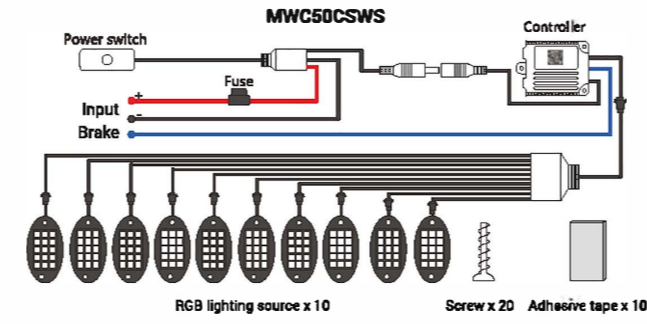
- Please check if the light and the parts are intact before installation.
- Make sure to cut off power before installation.
- Please do not place this light in corrosive conditions.
- If there is any damage to the cord, please cut off the power and stop using it immediately.
- Wrong connection may lead to this suite get damaged, the warranty range is excluding the damage caused by wrong connection.
- To ensure the light works properly, please use the voltage indicated on the packing.
- To avoid any damage to the light, please do not use chemical solvent during routine maintenance.

#### 1. Specification

Wattage	Max 15W
Lamp QTY	15pcs* 0
Model	DC-B1 T10-1
Pack	1 Pack
Input Voltage	DC12V
Protection Rating	IP68
Controlled By	Bluetooth APP/4 Keys RF remote control/24 Keys RF remote control
Battery for Controller	CR2032/CR2025
remote control distance	Max10m
Lamp Brand	5050RGB
Life Span	30000H
Working Temperature	-40~60°C

1

English



- Use screws or tape to stick lamp under the automobile chassis.
- Use the cable to fix the light wire on the automobile chassis.
- Please do not expose controller to the outside in case of being influent.

Tip:  
When it's powered, please wait 2~3 seconds, then turn on or turn off the light.

3

English

### 3. Three Control Methods

#### Type A: Bluetooth APP Installation

Support: bluetooth 4.0 above  
Phone Support: ios 11 or above and android 4.4 or above.  
Language support: English  
APP name: LEDODM



#### APP Connection Instructions:

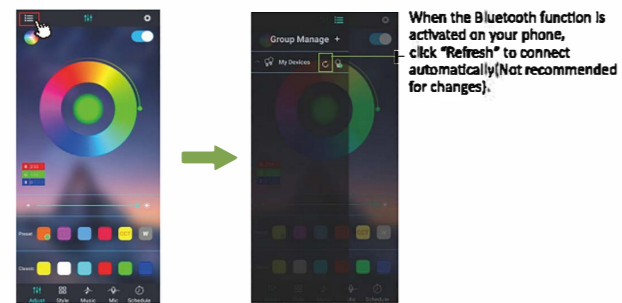
Step One: Open APP and enter the RGB color setting.



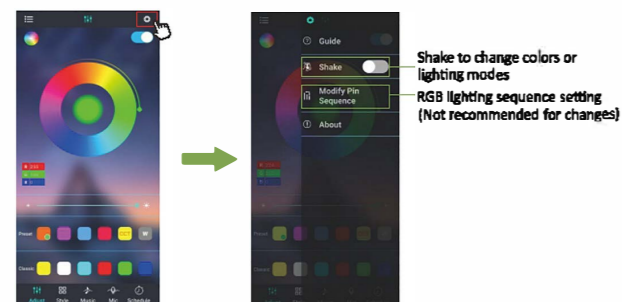
Choose lighting colors on the color wheel and adjust brightness by dragging the slider bar below.

4

English



Lights will be connected automatically to the APP when the Bluetooth function is activated on your phone.



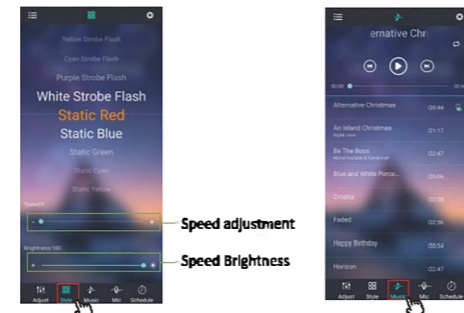
Enter shake mode by clicking "Setting" button.

5

English

Step Two: Enter "Mode" for lighting modes and speed setting.

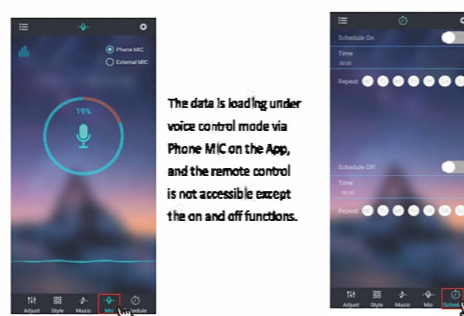
Step Three: Enter "Music" setting to play your favorite music, and lighting will dance with the music.



For Android phones, input music files directly from its internal storage; For iPhones, input music files by using the sync setting in iTunes through PC desktop.

Step Four: Enter "Microphone" setting, to choose either built-in Mic, which use the microphone function on your phone to receive audio and change lighting colors accordingly; or external Mic, which use the signal receiver to receive audio and change lighting colors accordingly.

Step Five: Enter "Timer" for lighting schedule setting:



6

English

If the Bluetooth connection is not successful, check the possible causes by following the steps below.

- Check if the connection of the lighting kit is correct and if the lights function well.
- Check if the Bluetooth is activated.
- This lighting kit adopts the Bluetooth 4.0 version, which only supports connection with one phone. Check if the lighting kit has been paired to a phone. If yes, please disconnect it with the previous phone and pair it to yours.
- Check if the Bluetooth is successfully paired to the lighting kit. If not, edit the APP and restart it to connect the lighting kit again.
- If the Bluetooth connection still fails after restarting the APP, please exit the APP and reboot your phone. Make sure the lighting kit is correctly wired and functions well, then open the APP to connect the lighting kit again.

#### Type B: 24-key Remote Controller



7

English

#### Type C: 4 Key RF Remote Control



- A: ON/OFF
- B: Music (4 modes)
- C: Short press to circulate between 16 colors in static modes, long press for 2s each time to circulate between ten levels of brightness.
- D: Short press to circulate between 22 dynamic modes, long press for 2s each time to circulate between ten levels of speed.

Note: When the remote control loses connection to the LED light, please pair it to the signal receiver of the light.  
How to pair? Once the light is powered on in 2 seconds, point the remote controller to the signal receiver and long press the power button on the controller for 5 seconds.

8

70301021 157g 铜版纸双面印 风琴折 100X140MM B款 1T6/10底盘灯 CN1013

#### FCC Statement

This equipment has been tested and found to comply with the limits for a Class B digital device, pursuant to part 15 of the FCC Rules. These limits are designed to provide reasonable protection against harmful interference in a residential installation. This equipment generates, uses and can radiate radio frequency energy and, if not installed and used in accordance with the instructions, may cause harmful interference to radio communications. However, there is no guarantee that interference will not occur in a particular installation. If this equipment does cause harmful interference to radio or television reception, which can be determined by turning the equipment off and on, the user is encouraged to try to correct the interference by one or more of the following measures:

- Reorient or relocate the receiving antenna.
- Increase the separation between the equipment and receiver.
- Connect the equipment into an outlet on a circuit different from that to which the receiver is connected.
- Consult the dealer or an experienced radio/TV technician for help.

Caution: Any changes or modifications to this device not explicitly approved by manufacturer could void your authority to operate this equipment.

This device complies with part 15 of the FCC Rules. Operation is subject to the following two conditions: (1) This device may not cause harmful interference, and (2) this device must accept any interference received, including interference that may cause undesired operation.

#### RF Exposure Information

This equipment complies with FCC radiation exposure limits set forth for an uncontrolled environment. This equipment should be installed and operated with minimum distance 20cm between the radiator and your body.