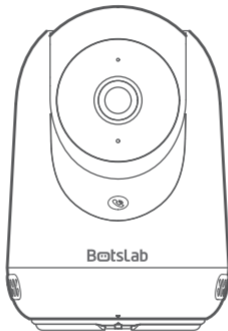


BotsLab

Be Secure, Be Botslab



Botslab Indoor Cam 3C Pro Quick Start Guide

Packing list

Please check whether the main unit and all accessories are complete upon unpacking.



Main camera unit x 1



Power cable x 1



Wall mount base x 1



Positioning sticker x 1



Quick Start Guide x 1

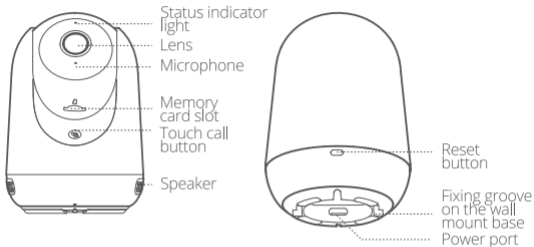


Power adapter x 1



Screw pack for installation x 1

Product appearance



Reset button: When the camera is powered on, press and hold the reset button for 5 seconds, and the "Di" sound indicates that the reset is successful.

Memory card: Maximum storage of 256 GB.

Network configuration instructions

Download and install the APP

Method 1: Scan the QR code below with your mobile phone to download and install the **Botslab** APP.

Method 2: Search and download the **Botslab** APP from App Store or Google Play, and then install it.



Scan to download
Botslab APP



Connect to a power

Find the power socket on the bottom of the product and connect it to a power supply. When the product status indicator lights up in flashing green, it indicates that the camera is powered on for network configuration.

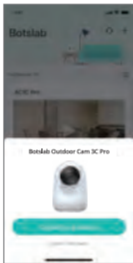
Note: If the status indicator lights are not flashing green, reset the device now.

Add camera

Launch the Botslab APP, tap the "Sign up" button, and start creating your account. If you already have an account, please log in directly and add a camera.

Method 1

After logging in, Bluetooth will automatically search for the camera by default. Once the camera is found, add the device according to the prompts.



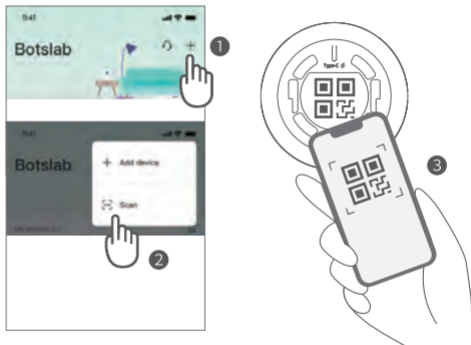
When connecting to the network, please make sure that Bluetooth is enabled on the mobile phone and that the WiFi is properly connected.

Method 2

Tap the "+" button in the upper right corner of the APP homepage to "Scan" the code, then use your mobile phone to scan the QR code at the bottom of the camera to enter the distribution page, and add the camera as instructed.

Method 3

Tap the "+" button in the upper right corner of the APP homepage to "Add Device", tap the "Camera" button, tap and select the "Indoor Cam 3C Pro C224" icon to enter the distribution page, and add the camera as instructed.



Note:

- Complete the sound wave pairing in a quiet environment.
- Please make sure the camera is connected to Wi-Fi. The camera only supports 2.4GHz Wi-Fi.

Installation guide

Method 1: On a table

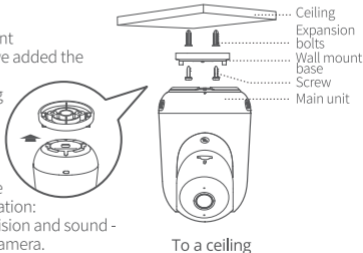
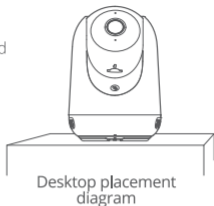
The camera can be placed on the leveled surface of a desk, table, tea table, etc.

Method 2: To a ceiling

- Drill holes in the ceiling and install expansion bolts, and fix the base on the wall with screws.
- Align the fixing groove at the bottom of the camera with the buckle on the base, and gently push it in until it cannot be pushed to complete the installation.

Notes:

- Please start ceiling-mount installation after you have added the camera.
- The ceiling for mounting must be able to bear at least 3 times the total weight of the camera and the base.
- Please rotate the picture for ceiling-mount installation:
Settings - Image, night vision and sound -
Rotate image - Inverse camera.



Notes

1. For better night vision imaging, do not use the camera with the front or sides of the lens near reflective materials such as glass and white walls; otherwise, the images of things nearby will be rendered bright while those far away dark or even white.
2. Try to place the device in a place with good network signal reception. The distance between the device and metal objects (e.g., metal supports, metal doors, and windows) or other signal interference sources should not be too close.
3. Do not place the device near the heat source, e.g., electric heater, oven, or stove fire.
4. The applicable working temperature of this product is -10°C – $+40^{\circ}\text{C}$. Please do not use it in an environment where the temperature is too high or too low.
5. Please do not use this product in an environment that is excessively humid and may cause water ingress.

Operating mode description

Status indicator light	Operating mode description
Constant blue	Camera connected
Flashing blue	Someone viewing video
Constant green	Camera turned on/failure
Breathing green	Prepare network configuration
Flashing green	Network configuration for the first time. Connecting; The device is offline. Reconnecting; System upgrade
Light off	Shut down; Power off

- i** The manufacturer reserves the right to adjust the functional status of the product through firmware upgrades or software adjustments.

Important

Personal information security

For the safety of you and your family, please make sure that the products you purchase are not bound to any unauthorized person. Botslab will take strict measures to protect the information security of you and your family.

FCC STATEMENT

This device complies with part 15 of the FCC Rules. Operation is subject to the following two conditions: (1) This device may not cause harmful interference, and (2) this device must accept any interference received, including interference that may cause undesired operation.

This equipment has been tested and found to comply with the limits for a Class B digital device, pursuant to part 15 of the FCC Rules. These limits are designed to provide reasonable protection against harmful interference in a residential installation. This equipment generates uses and can radiate radio frequency energy and, if not installed and used in accordance with the instructions, may cause harmful interference to radio communications. However, there is no guarantee that interference will not occur in a particular installation. If this equipment does cause harmful interference to radio or television reception, which can be determined by turning the equipment off and on, the user is encouraged to try to correct the interference by one or more of the following measures:

Reorient or relocate the receiving antenna.

- Increase the separation between the equipment and receiver.
- Connect the equipment into an outlet on a circuit different from that to which the receiver is connected.
- Consult the dealer or an experienced radio/TV technician for help.

Any Changes or modifications not expressly approved by the party responsible for compliance could void the user's authority to operate the equipment.

This equipment complies with FCC radiation exposure limits set forth for an uncontrolled environment. This equipment should be installed and operated with minimum distance 20cm between the radiator & your body.

Responsible party (contact for FCC matters only)

Botslab Inc.

919 North Market Street, Suite 950, Wilmington, New Castle, Delaware

www.botslab.com

IC regulatory conformance

This device complies with CAN ICES 003 (B)/NMB 003(B)

This device complies with Industry Canada licence exempt RSS standard(s)

Operation is subject to the following two conditions:

- (1) this device may not cause harmful interference, and
- (2) this device must accept any interference received, including interference that may cause undesired operation.

Cet appareil est conforme à la norme CAN ICES 003 (B)/NMB 003 (B)

Le présent appareil est conforme aux CNR d'Industrie Canada applicables aux appareils radio exempts de licence . L'exploitation est autorisée aux deux conditions suivantes:

- (1) l'appareil ne doit pas produire de brouillage , et
- (2) l'utilisateur de l'appareil doit accepter tout brouillage radioélectrique subi , même si le brouillage est susceptible d'en compromettre le fonctionnement

RF Exposure

Déclaration d'exposition aux rayonnements:

L'équipement est conforme aux limites d'exposition au rayonnement RSS établies pour les environnements non contrôlés. Cet équipement doit être installé et utilisé avec une distance minimale de 20cm entre le radiateur et votre corps

The device complies with the RSS radiation exposure limits set for uncontrolled environments. The device must be installed and used with a minimum distance of 20cm between the radiator and the body

Cet é quipement est conforme aux limites d exposition aux rayonne-
ments de la IC é tablies pour unenvironnement non contrôé. Cet é
quipement doit ê tre install é et fonctionner à au moins 20cm de distance
d'un radiateur ou de votre corps.



This symbol means the product must be discarded as household
waste, and should be delivered to an appropriate collection
facility for recycling. Proper disposal and recycling helps protect
natural resources, human health and the environment. For more
information on disposal and recycling of this product, contact
your local municipality, disposal service, or the shop where you
bought this product.

Declaration of Conformity

Hereby, Botslab,Inc. declares that the radio equipment type C224 of
Botslab Indoor Cam 3C Pro is compliance with Directive 2014/53/EU and
this product is allowed to be used in all EU member states. The full text of
the EU declaration of conformity is available at the following internet
address: www.botslab.com . **This product can be used across EU member states.**

Operation frequency (Max power)

Bluetooth:2402MHz-2480MHz(<20dBm)

Wifi:2412MHz 2472MHz(<20dBm)

RF exposure statement

RF exposure information: The Maximum Permissible Exposure (MPE) level
has been calculated based on a distance of $d=20$ cm between the device
and the human body. To maintain compliance with RF exposure
requirement, use product that maintain a 20cm distance between the
device and human body.

After-Sales Service

1. Product Warranty Policy

This product comes with a One-year Local Warranty Service. For detail of warranty service, please kindly contact local Authorized Distributors in your country.

2. Product Non-Warranty Policy

- Cannot present valid warranty certificate and purchase invoice.
- Damage caused by use, maintenance, or keeping of the product not in accordance with product description, damage caused by disassembly and repair unauthorized by Botslab, or artificial damage.
- Damages which result of force majeure.
- Normal decoloration and wastage during usage will not be included into warranty service.

Contact Us



<https://www.botslab.com>



service@botslab.com



[Facebook@botslabofficial](#)



Phone number: 1-866-360-0505 (Only for US)
Working time: Mon-Fri, 9:00 - 17:00 EST

Complies with
IMDA Standards
[DA107035]